

*All you need to  
enrich your lifestyle,  
A BRAND NEW AURA!*



**BRIGADE**  
Building Positive Experiences



Artist's Impression.

**Two exclusive towers with elegantly  
spacious homes,**  
both part of a community-centric lifestyle.

**AURA**  
AT  
**BRIGADE**  
**HORIZON**  
— MYSORE ROAD —

RERA Reg. No.: PRM/KA/RERA/1251/310/PR/190722/005086  
Details available at [www.rera.karnataka.gov.in](http://www.rera.karnataka.gov.in)



## AN EXCLUSIVE LIFESTYLE NESTLED IN THE WARMTH OF COMMUNITY.

Experience a unique chance to build a community while enjoying quality time with loved ones at Brigade Horizon. Explore enriched human experiences in our exclusive 3 & 4 bedroom residences at Aura. Enjoy socialising and peaceful moments, celebrating the blend of companionship and solitude.





**BEST OF BOTH WORLDS  
MEETS YOU WITH YOUR  
VISIONS & PASSIONS.**

Enter the world of Aura at Brigade Horizon, where memories are created through heartwarming conversations and treasured family time.

With healthcare, education, and entertainment at your doorstep, you can embrace the world's offerings minus the commotion. The lively landscape fosters connections among diverse individuals, cultivating a positive and secure environment.





**ELEGANTLY SPACIOUS HOMES**  
FOR THE COMFORT AFTER  
THE CONVERSATIONS.

After a day of exploration, find solace in your comfortable home here. Designed for your privacy, unwind in the airy living room or watch the sunset from your expansive balcony. Recharge for another day of opportunities, forging new friendships or continuing conversations. Choose your favourite moments from your cosy 3 or 4 bedroom home.



Artist's impression. The materials shown are only indicative. The final product may differ based on availability.



Pool Deck



Yoga Lawn



Outdoor Exercise Area

## FILL YOUR LIFE WITH SOMETHING WORTHY OF YOUR TIME.

Whether you're in the mood for walks or nature time, our park awaits your musings. Family fun awaits at the swimming pool, including a kids' pool. Enjoy entertainment in the multipurpose party hall. Start your wellness journey in the well-equipped gym after pep talks and diet plans. Seek respite in the library, and find essentials at the nearby store.

A moment of quiet escape can be met at the yoga deck & meditation plaza. Looking for something a little more slow? Grab your biggest hat and enjoy a Sunday evening at the sun deck.





Swimming Pool



Sun Deck



Indoor Games



Gym



Activity Lawn



Convenience Store\*



Yoga Deck & Meditation Plaza



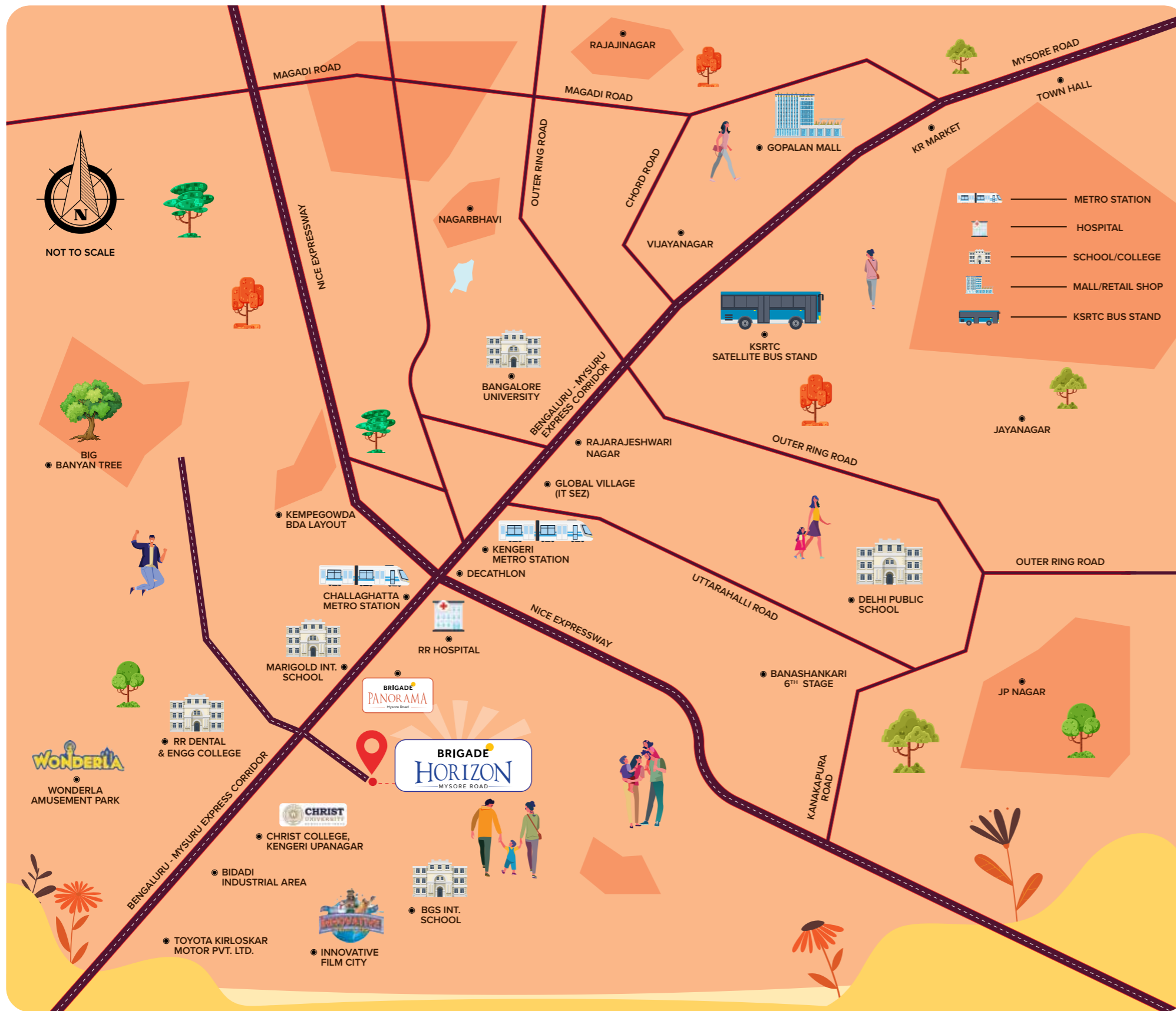
Multipurpose Hall

Images for representation purposes only. \*Space provisioned for convenience store

# LOCATION MAP

## AN EXCLUSIVELY EXTRAORDINARY ADDRESS.

Brigade Horizon is a 5-acre residential enclave located near Mysuru Road, making social infrastructure more accessible than ever. You can shop till you drop at Gopalan Arcade Mall on Mysuru Road. With RR Medical College & Hospital, all your healthcare worries are taken care of at a short distance. Choose from a variety of entertainment options with a quick 15-minute drive to Wonderla Amusement Park.



- 2 Min** Rajarajeshwari Dental & Engineering College
- 5 Min** Marigold International School
- 5 Min** Shree Swaminarayan Gurukul International School
- 5 Min** Don Bosco Engineering College
- 5 Min** Christ College, Kengeri Upanagar
- 6 Min** Tattva School
- 10 Min** DPS West Bengaluru

### EDUCATION

- 10 Min** Bidadi Industrial Estate
- 12 Min** Bosch Ltd.
- 15 Min** Toyota Kirloskar Motor Pvt. Ltd.
- 15 Min** Hindustan Coca-Cola Beverages Ltd.
- 20 Min** Global Village Tech Park

### WORKPLACES & BUSINESS PARKS

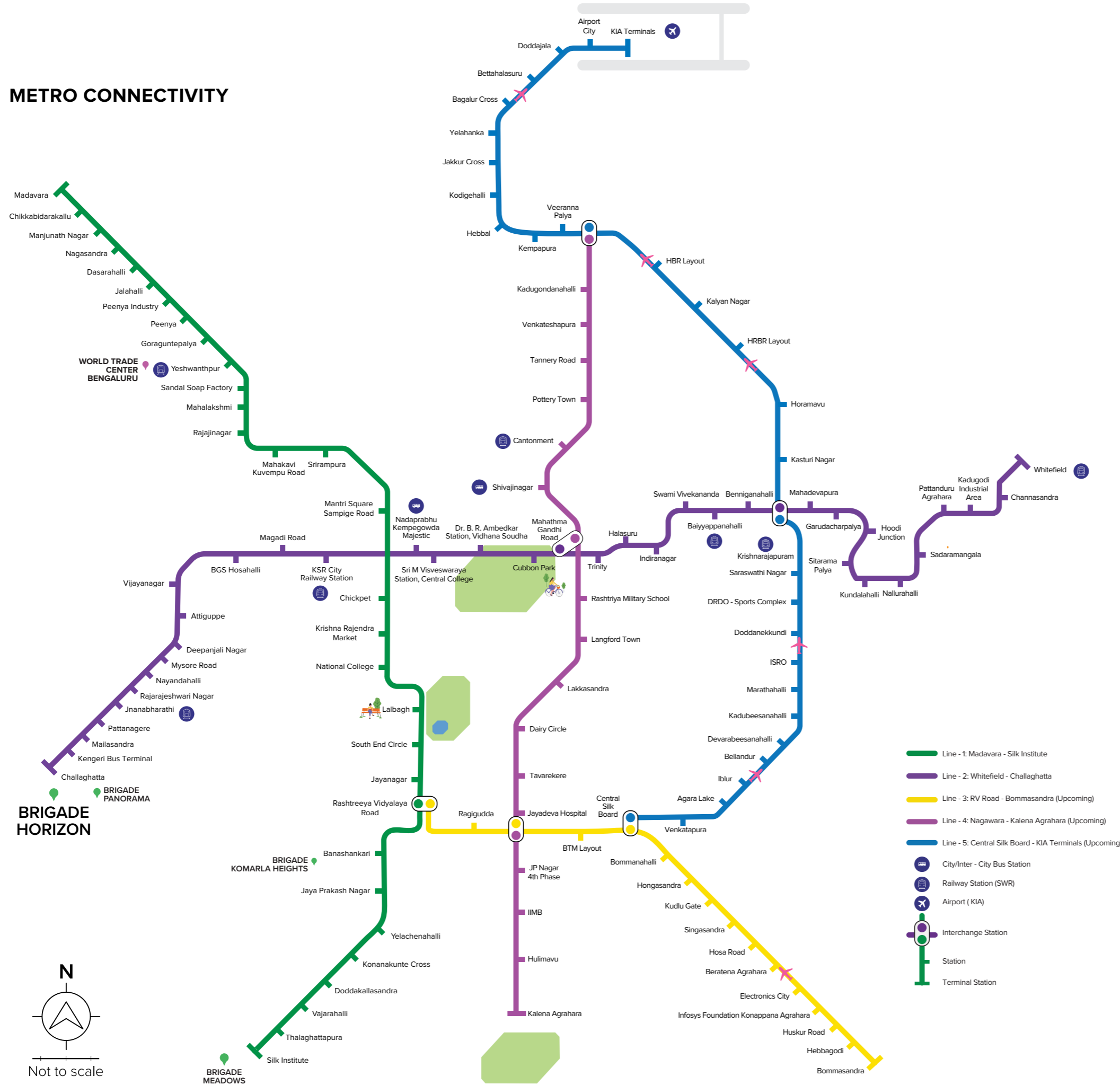
- 5 Min** Decathlon
- 15 Min** Wonderla
- 20 Min** Big Banyan Tree
- 20 Min** Gopalan Arcade Mall

### SHOPPING & RECREATION

- 5 Min** Rajarajeshwari Medical College & Hospital
- 5 Min** SDM Ayurvedic Hospital
- 20 Min** BGS Super Speciality Hospitals
- 25 Min** Unity Hospital

### HEALTHCARE

# METRO CONNECTIVITY



## AN EQUALLY EXCLUSIVE LOCATION.

Brigade Horizon brings you the best address in West Bengaluru powered by the superb high-speed connectivity through the NICE Road and the Mysuru-Bengaluru Expressway. Namma Metro here is all set to boost the region's growth potential with the Challaghatta Metro Station in close proximity. Considering the optimal employment opportunities and readily available social infrastructure, Mysuru Road is poised to take centre stage in the realty action.



The information depicted herein viz., master plans, floor plans, furniture layout, fittings, illustrations, specifications, designs, dimensions, rendered views, colours, amenities and facilities etc., are subject to change without notifications as may be required by the relevant authorities or the Developer's architect, and cannot form part of an offer or contract. Whilst every care is taken in providing this information, the Developer cannot be held liable for variations. All illustrations and pictures are artist's impression only. The information is subject to variations, additions, deletions, substitutions and modifications as may be recommended by the company's architect and/or the relevant approving authorities. The Developer is wholly exempt from any liability on account of any claim in this regard. (1 square metre = 10.764 square feet). E & OE. All dimensions and calculations are done in metric system (M/Sq.m), and imperial system (Ft/Sq.ft) shown is for reference only. All dimensions indicated in the drawing are from unfinished surfaces, excluding plaster thickness and tile thickness.

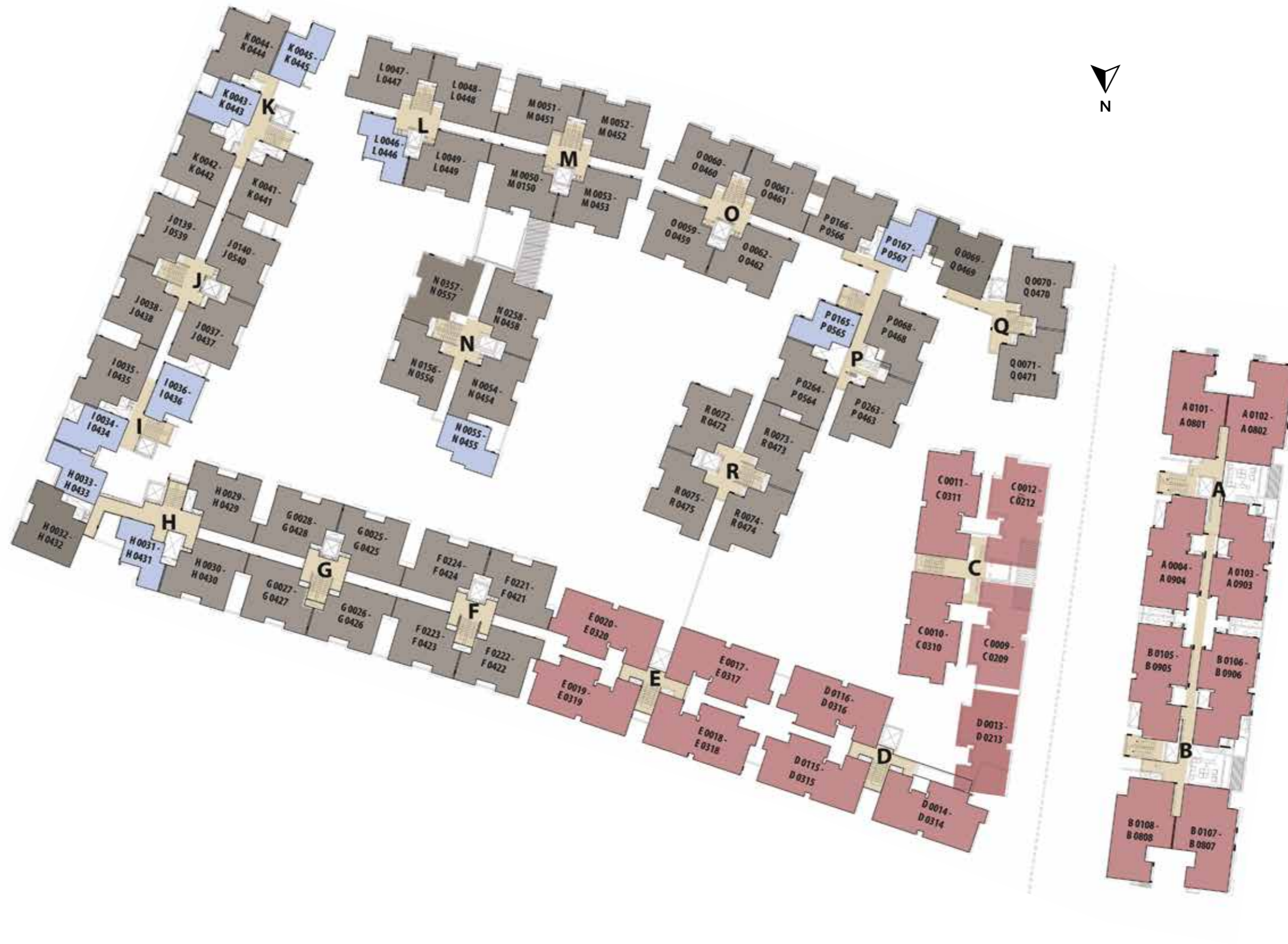
# MASTER PLAN



- 01 ENTRANCE PLAZA
- 02 DROP OFF
- 03 JOGGING TRACK
- 04 PLAY LAWNS
- 05 PAVED PLAZA
- 06 LEISURE SEATING
- 07 EXTENDED PARTY AREA
- 08 FESTIVE LAWNS
- 09 MULTIPURPOSE AREA
- 10 POOL DECK
- 11 SWIMMING POOL
- 12 KIDS POOL
- 13 SEATING ENCLOSURE
- 14 ACTIVITY LAWN
- 15 PLAY DECK
- 16 CHILDREN'S PLAY AREA
- 17 OUTDOOR EXERCISE AREA

The information depicted herein viz., master plans, floor plans, furniture layout, fittings, illustrations, specifications, designs, dimensions, rendered views, colours, amenities and facilities etc., are subject to change without notifications as may be required by the relevant authorities or the Developer's architect, and cannot form part of an offer or contract. Whilst every care is taken in providing this information, the Developer cannot be held liable for variations. All illustrations and pictures are artist's impression only. The information is subject to variations, additions, deletions, substitutions and modifications as may be recommended by the company's architect and/or the relevant approving authorities. The Developer is wholly exempt from any liability on account of any claim in this regard. (1 square metre = 10.764 square feet). E & OE. All dimensions and calculations are done in metric system (M/Sq.m), and imperial system (Ft/Sq.ft) shown is for reference only. All dimensions indicated in the drawing are from unfinished surfaces, excluding plaster thickness and tile thickness.

# KEY NUMBERING PLAN



The information depicted herein viz., master plans, floor plans, furniture layout, fittings, illustrations, specifications, designs, dimensions, rendered views, colours, amenities and facilities etc., are subject to change without notifications as may be required by the relevant authorities or the Developer's architect, and cannot form part of an offer or contract. Whilst every care is taken in providing this information, the Developer cannot be held liable for variations. All illustrations and pictures are artist's impression only. The information is subject to variations, additions, deletions, substitutions and modifications as may be recommended by the company's architect and/or the relevant approving authorities. The Developer is wholly exempt from any liability on account of any claim in this regard. (1 square metre = 10.764 square feet). E & OE. All dimensions and calculations are done in metric system (M/Sq.m), and imperial system (Ft/Sq.ft) shown is for reference only. All dimensions indicated in the drawing are from unfinished surfaces, excluding plaster thickness and tile thickness.

# UNIT PLAN

TYPE 6 - 3 BEDROOM + 2 TOILET



UNIT NO: A 0101 - A 0801 / A 0102 - A 0802 / B 0107 - B 0807 / B 0108 - B 0808

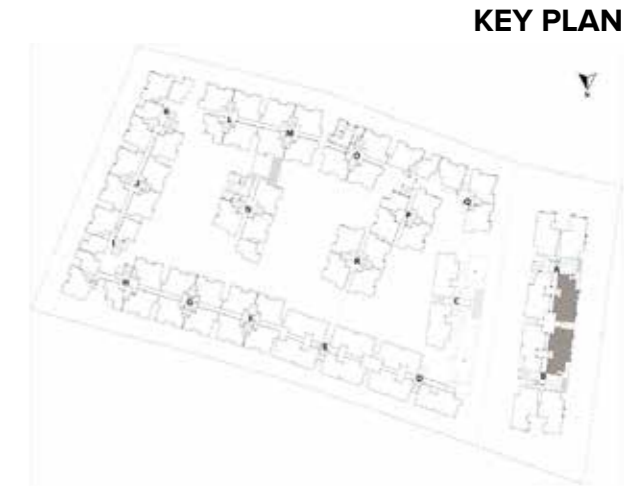
**UNIT CARPET AREA**  
85.78 Sq.mt. / 923.33 Sq.ft.

**BALCONY CARPET AREA**  
6.15 Sq.mt. / 66.20 Sq.ft.

**SUPER BUILT-UP AREA**  
133.61 Sq.mt. / 1438 Sq.ft.

# UNIT PLAN

TYPE 7A - 3 BEDROOM + 2 TOILET



UNIT NO: A 0403 / B 0406 / A 0703

**UNIT CARPET AREA**  
85.12 Sq.mt. / 916.22 Sq.ft.

**BALCONY CARPET AREA**  
8.08 Sq.mt. / 86.97 Sq.ft.

**SUPER BUILT-UP AREA**  
136.86 Sq.mt. / 1473 Sq.ft.

The information depicted herein viz., master plans, floor plans, furniture layout, fittings, illustrations, specifications, designs, dimensions, rendered views, colours, amenities and facilities etc., are subject to change without notifications as may be required by the relevant authorities or the Developer's architect, and cannot form part of an offer or contract. Whilst every care is taken in providing this information, the Developer cannot be held liable for variations. All illustrations and pictures are artist's impression only. The information is subject to variations, additions, deletions, substitutions and modifications as may be recommended by the company's architect and/or the relevant approving authorities. The Developer is wholly exempt from any liability on account of any claim in this regard. (1 square metre = 10.764 square feet). E & OE. All dimensions and calculations are done in metric system (M/Sq.m), and imperial system (Ft/Sq.ft) shown is for reference only. All dimensions indicated in the drawing are from unfinished surfaces, excluding plaster thickness and tile thickness.

The information depicted herein viz., master plans, floor plans, furniture layout, fittings, illustrations, specifications, designs, dimensions, rendered views, colours, amenities and facilities etc., are subject to change without notifications as may be required by the relevant authorities or the Developer's architect, and cannot form part of an offer or contract. Whilst every care is taken in providing this information, the Developer cannot be held liable for variations. All illustrations and pictures are artist's impression only. The information is subject to variations, additions, deletions, substitutions and modifications as may be recommended by the company's architect and/or the relevant approving authorities. The Developer is wholly exempt from any liability on account of any claim in this regard. (1 square metre = 10.764 square feet). E & OE. All dimensions and calculations are done in metric system (M/Sq.m), and imperial system (Ft/Sq.ft) shown is for reference only. All dimensions indicated in the drawing are from unfinished surfaces, excluding plaster thickness and tile thickness.

# UNIT PLAN

TYPE 9 - 3 BEDROOM + 2 TOILET



KEY PLAN

UNIT NO: A 0903 / B 0906

**UNIT CARPET AREA**  
85.12 Sq.mt. / 916.22 Sq.ft.

**BALCONY CARPET AREA**  
8.08 Sq.mt. / 86.97 Sq.ft.

**SUPER BUILT-UP AREA**  
136.86 Sq.mt. / 1473 Sq.ft.

**OPEN TERRACE AREA**  
4.09 Sq.mt. / 44.02 Sq.ft.

# UNIT PLAN

TYPE 10 - 3 BEDROOM + 2 TOILET



KEY PLAN

UNIT NO: A 0004 - A 0404 / A 0704 - A 0904 / A 0103  
B 0105 - B 0405 / B 0805 - B 0905 / B 0106

**UNIT CARPET AREA**  
85.12 Sq.mt. / 916.22 Sq.ft.

**BALCONY CARPET AREA**  
6.47 Sq.mt. / 69.64 Sq.ft.

**SUPER BUILT-UP AREA**  
135 Sq.mt. / 1453 Sq.ft.

The information depicted herein viz., master plans, floor plans, furniture layout, fittings, illustrations, specifications, designs, dimensions, rendered views, colours, amenities and facilities etc., are subject to change without notifications as may be required by the relevant authorities or the Developer's architect, and cannot form part of an offer or contract. Whilst every care is taken in providing this information, the Developer cannot be held liable for variations. All illustrations and pictures are artist's impression only. The information is subject to variations, additions, deletions, substitutions and modifications as may be recommended by the company's architect and/or the relevant approving authorities. The Developer is wholly exempt from any liability on account of any claim in this regard. (1 square metre = 10.764 square feet). E & OE. All dimensions and calculations are done in metric system (M/Sq.m), and imperial system (Ft/Sq.ft) shown is for reference only. All dimensions indicated in the drawing are from unfinished surfaces, excluding plaster thickness and tile thickness.

The information depicted herein viz., master plans, floor plans, furniture layout, fittings, illustrations, specifications, designs, dimensions, rendered views, colours, amenities and facilities etc., are subject to change without notifications as may be required by the relevant authorities or the Developer's architect, and cannot form part of an offer or contract. Whilst every care is taken in providing this information, the Developer cannot be held liable for variations. All illustrations and pictures are artist's impression only. The information is subject to variations, additions, deletions, substitutions and modifications as may be recommended by the company's architect and/or the relevant approving authorities. The Developer is wholly exempt from any liability on account of any claim in this regard. (1 square metre = 10.764 square feet). E & OE. All dimensions and calculations are done in metric system (M/Sq.m), and imperial system (Ft/Sq.ft) shown is for reference only. All dimensions indicated in the drawing are from unfinished surfaces, excluding plaster thickness and tile thickness.

# UNIT PLAN

TYPE 12 - 3 BEDROOM + 2 TOILET



## KEY PLAN



UNIT NO: A 0303 / B 0306

**UNIT CARPET AREA**  
85.12 Sq.mt. / 916.22 Sq.ft.

---

**BALCONY CARPET AREA**  
12.02 Sq.mt. / 129.38 Sq.ft.

---

**SUPER BUILT-UP AREA**  
142.38 Sq.mt. / 1533 Sq.ft.

# UNIT PLAN

TYPE 13 - 3 BEDROOM + 2 TOILET



## KEY PLAN



UNIT NO: A 0504 - A 0604 / B 0505 - B 0605

**UNIT CARPET AREA**  
92.10 Sq.mt. / 991.36 Sq.ft.

---

**BALCONY CARPET AREA**  
6.47 Sq.mt. / 69.64 Sq.ft.

---

**SUPER BUILT-UP AREA**  
143.78 Sq.mt. / 1548 Sq.ft.

The information depicted herein viz., master plans, floor plans, furniture layout, fittings, illustrations, specifications, designs, dimensions, rendered views, colours, amenities and facilities etc., are subject to change without notifications as may be required by the relevant authorities or the Developer's architect, and cannot form part of an offer or contract. Whilst every care is taken in providing this information, the Developer cannot be held liable for variations. All illustrations and pictures are artist's impression only. The information is subject to variations, additions, deletions, substitutions and modifications as may be recommended by the company's architect and/or the relevant approving authorities. The Developer is wholly exempt from any liability on account of any claim in this regard. (1 square metre = 10.764 square feet). E & OE. All dimensions and calculations are done in metric system (M/Sq.m), and imperial system (Ft/Sq.ft) shown is for reference only. All dimensions indicated in the drawing are from unfinished surfaces, excluding plaster thickness and tile thickness.

The information depicted herein viz., master plans, floor plans, furniture layout, fittings, illustrations, specifications, designs, dimensions, rendered views, colours, amenities and facilities etc., are subject to change without notifications as may be required by the relevant authorities or the Developer's architect, and cannot form part of an offer or contract. Whilst every care is taken in providing this information, the Developer cannot be held liable for variations. All illustrations and pictures are artist's impression only. The information is subject to variations, additions, deletions, substitutions and modifications as may be recommended by the company's architect and/or the relevant approving authorities. The Developer is wholly exempt from any liability on account of any claim in this regard. (1 square metre = 10.764 square feet). E & OE. All dimensions and calculations are done in metric system (M/Sq.m), and imperial system (Ft/Sq.ft) shown is for reference only. All dimensions indicated in the drawing are from unfinished surfaces, excluding plaster thickness and tile thickness.

# UNIT PLAN

TYPE 14 - 3 BEDROOM + 2 TOILET



UNIT NO: A 0603 / B 0606

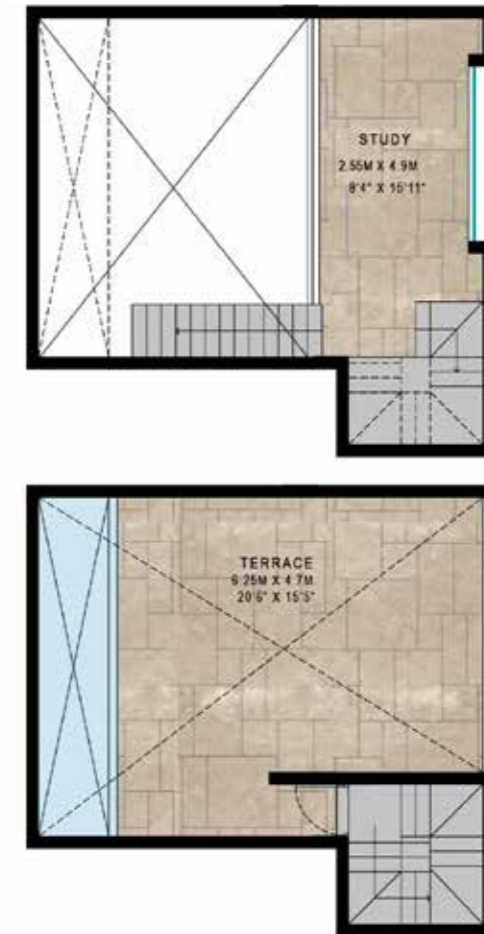
**UNIT CARPET AREA**  
92.10 Sq.mt. / 991.36 Sq.ft.

**BALCONY CARPET AREA**  
12.02 Sq.mt. / 129.38 Sq.ft.

**SUPER BUILT-UP AREA**  
151.16 Sq.mt. / 1627 Sq.ft.

# UNIT PLAN

TYPE 15 - DUPLEX - 4 BEDROOM + 3 TOILET



UNIT NO : A 0803 D / B 0806 D

**UNIT CARPET AREA**  
154.17 Sq.mt. / 1659.47 Sq.ft.

**BALCONY CARPET AREA**  
8.58 Sq.mt. / 92.35 Sq.ft.

**SUPER BUILT-UP AREA**  
241.86 Sq.mt. / 2603 Sq.ft.

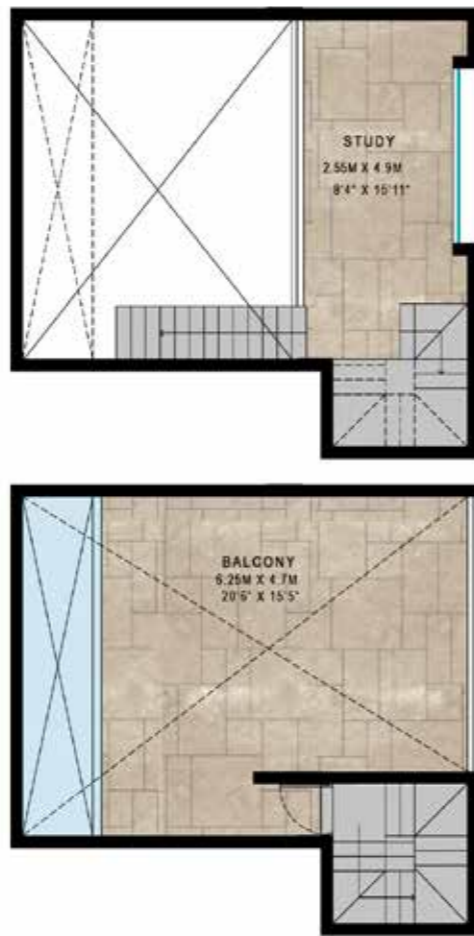
**OPEN TERRACE AREA**  
36.59 Sq.mt. / 391.70 Sq.ft.

The information depicted herein viz., master plans, floor plans, furniture layout, fittings, illustrations, specifications, designs, dimensions, rendered views, colours, amenities and facilities etc., are subject to change without notifications as may be required by the relevant authorities or the Developer's architect, and cannot form part of an offer or contract. Whilst every care is taken in providing this information, the Developer cannot be held liable for variations. All illustrations and pictures are artist's impression only. The information is subject to variations, additions, deletions, substitutions and modifications as may be recommended by the company's architect and/or the relevant approving authorities. The Developer is wholly exempt from any liability on account of any claim in this regard. (1 square metre = 10.764 square feet). E & OE. All dimensions and calculations are done in metric system (M/Sq.m), and imperial system (Ft/Sq.ft) shown is for reference only. All dimensions indicated in the drawing are from unfinished surfaces, excluding plaster thickness and tile thickness.

The information depicted herein viz., master plans, floor plans, furniture layout, fittings, illustrations, specifications, designs, dimensions, rendered views, colours, amenities and facilities etc., are subject to change without notifications as may be required by the relevant authorities or the Developer's architect, and cannot form part of an offer or contract. Whilst every care is taken in providing this information, the Developer cannot be held liable for variations. All illustrations and pictures are artist's impression only. The information is subject to variations, additions, deletions, substitutions and modifications as may be recommended by the company's architect and/or the relevant approving authorities. The Developer is wholly exempt from any liability on account of any claim in this regard. (1 square metre = 10.764 square feet). E & OE. All dimensions and calculations are done in metric system (M/Sq.m), and imperial system (Ft/Sq.ft) shown is for reference only. All dimensions indicated in the drawing are from unfinished surfaces, excluding plaster thickness and tile thickness.

# UNIT PLAN

TYPE 16 - DUPLEX - 4 BEDROOM + 3 TOILET



KEY PLAN



UNIT NO : A 0203 D / B 0206 D

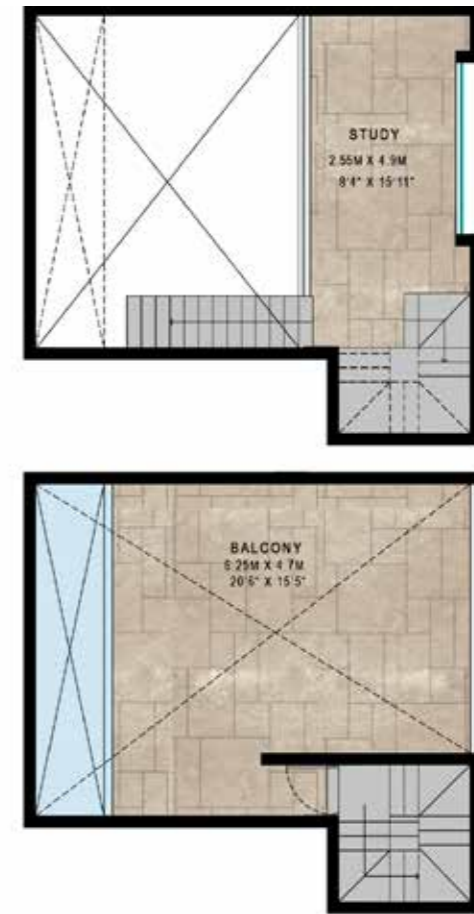
**UNIT CARPET AREA**  
154.17 Sq.mt. / 1659.47 Sq.ft.

**BALCONY CARPET AREA**  
38.12 Sq.mt. / 410.32 Sq.ft.

**SUPER BUILT-UP AREA**  
282.75 Sq.mt. / 3044 Sq.ft.

# UNIT PLAN

TYPE 17 - DUPLEX - 4 BEDROOM + 3 TOILET



KEY PLAN



UNIT NO : A 0503 D / B 0506 D

**UNIT CARPET AREA**  
160.34 Sq.mt. / 1725.88 Sq.ft.

**BALCONY CARPET AREA**  
42.07 Sq.mt. / 452.84 Sq.ft.

**SUPER BUILT-UP AREA**  
298.71 Sq.mt. / 3215 Sq.ft.

The information depicted herein viz., master plans, floor plans, furniture layout, fittings, illustrations, specifications, designs, dimensions, rendered views, colours, amenities and facilities etc., are subject to change without notifications as may be required by the relevant authorities or the Developer's architect, and cannot form part of an offer or contract. Whilst every care is taken in providing this information, the Developer cannot be held liable for variations. All illustrations and pictures are artist's impression only. The information is subject to variations, additions, deletions, substitutions and modifications as may be recommended by the company's architect and/or the relevant approving authorities. The Developer is wholly exempt from any liability on account of any claim in this regard. (1 square metre = 10.764 square feet). E & OE. All dimensions and calculations are done in metric system (M/Sq.m), and imperial system (Ft/Sq.ft) shown is for reference only. All dimensions indicated in the drawing are from unfinished surfaces, excluding plaster thickness and tile thickness.

The information depicted herein viz., master plans, floor plans, furniture layout, fittings, illustrations, specifications, designs, dimensions, rendered views, colours, amenities and facilities etc., are subject to change without notifications as may be required by the relevant authorities or the Developer's architect, and cannot form part of an offer or contract. Whilst every care is taken in providing this information, the Developer cannot be held liable for variations. All illustrations and pictures are artist's impression only. The information is subject to variations, additions, deletions, substitutions and modifications as may be recommended by the company's architect and/or the relevant approving authorities. The Developer is wholly exempt from any liability on account of any claim in this regard. (1 square metre = 10.764 square feet). E & OE. All dimensions and calculations are done in metric system (M/Sq.m), and imperial system (Ft/Sq.ft) shown is for reference only. All dimensions indicated in the drawing are from unfinished surfaces, excluding plaster thickness and tile thickness.

# SPECIFICATIONS

## FLOORING - COMMON AREAS

**Waiting Lounge / Reception / GF Lobby / Lift Lobby:** Granite / Vitrified Tiles

**Staircases:** Cemented Step Tiles

**Other Lift Lobby and Corridors (Upper):** Vitrified Tiles / Industrial Tiles

**Terrace:** Clay Tiles / Industrial Tiles

## UNIT FLOORING

**Living / Dining / Family / Foyer / Bedrooms / Kitchen / Utility:** Vitrified Tiles

**Balcony:** Anti-skid Ceramic Tiles

**Toilets:** Ceramic Tiles

## WALL DADO

**Kitchen:** Provision for Modular Kitchen (No Granite Slab / No Dado will be provided)

**Toilet:** Ceramic Tiles

## KITCHEN

**Counter:** Provision for Modular Kitchen (No Counter will be provided)

**Plumbing / Electrical:**

**Plumbing:** Water Inlet / Drain Provision for Water Purifier / Sink, Washing Machine and Dishwasher

**Electrical:** 16 amps - 3 nos., 6 amps - 5 nos., Common Electrical Point for Washing Machine and Dishwasher

## TOILETS

**CP Fittings:** Jaquar / Ess Ess or equivalent

**Sanitary Fixtures:** Wall-mounted EWC (Jaquar / Parryware / Hindware / equivalent)

## DOORS

**Main Door / Internal Doors:** Hardwood Frame with flush shutter

**Balcony Door:** UPVC / Aluminium

**Windows:** UPVC / Aluminium

## PAINTING & FINISHES

a) **Exterior Finish:** Combination of External Texture Paint with External Grade Emulsion

b) **Unit Internal Ceilings:** Emulsion Paint / OBD

c) **Unit Walls:** Emulsion Paint

## ELECTRICAL (APARTMENTS)

**3 BHK:** 5 kW • **4 BHK:** 8 kW

**Modular Switches** - Anchor / Roma or equivalent make

## DG BACKUP

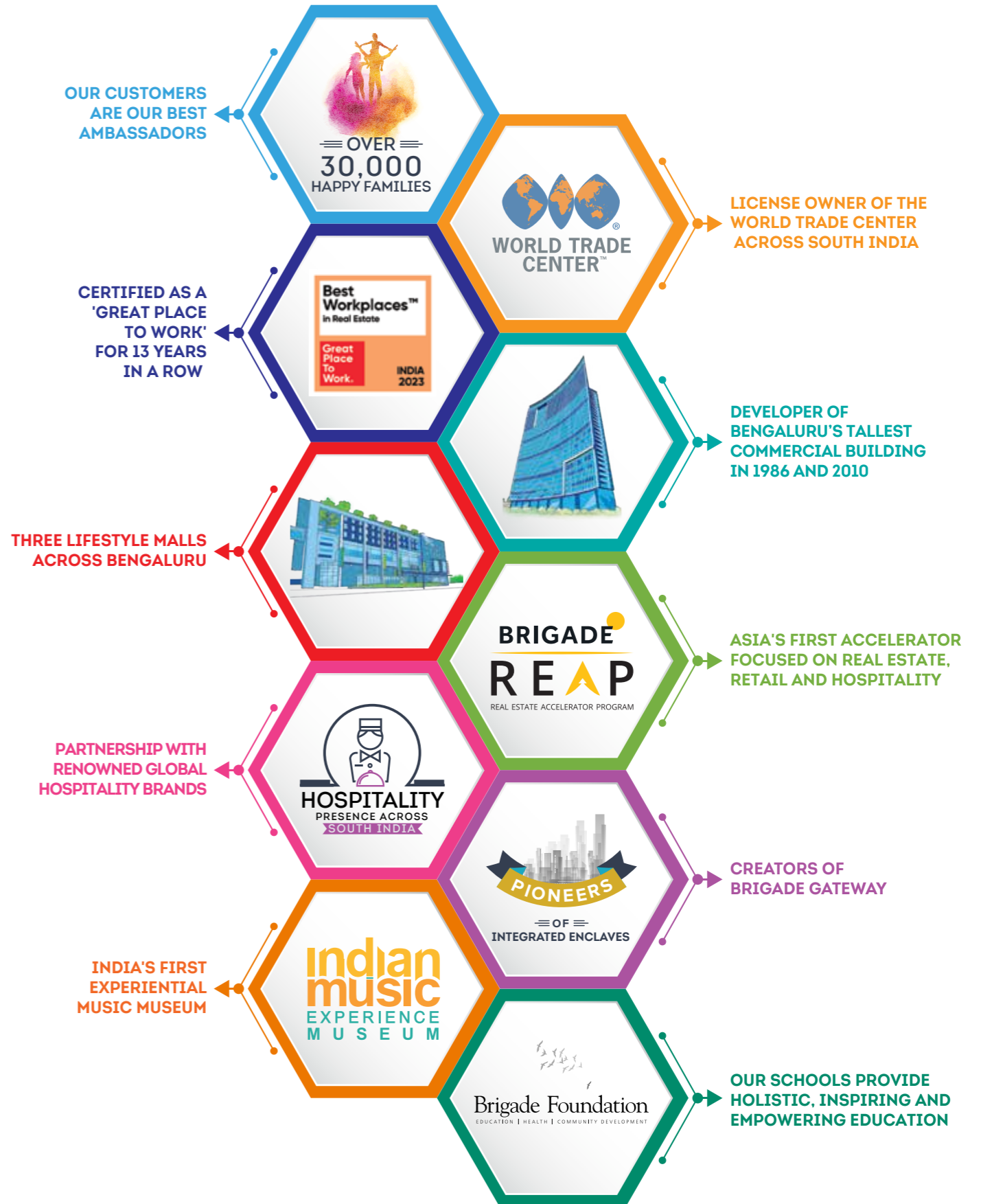
100% DG Backup for Common Area

50% Backup for Units

## VERTICAL TRANSPORTATION

Lifts provided as per design

# WORLD OF BRIGADE





## AWARDS & ACCOLADES

### Brigade Group

Recognised for being amongst India's Best Workplaces in the Real Estate industry for 13 years in a row, at the 'Great Place To Work' 2023

### Brigade Group

Recognised as one of 'India's Top Builders - National Category' at the Construction World Architect and Builder Awards (CWAB) 2022

### M R Jaishankar

Recognised as 'Realty Personality of the Year' at The Economic Times Real Estate Awards 2022 - South

### Brigade El Dorado - North Bengaluru

Received the prestigious 'Pradhan Mantri Awas Yojana' award under the Affordable Housing projects at the PMAY - Empowering India Awards 2022

### Brigade Orchards - North Bengaluru

Won the 'Residential Project - Township' at The Economic Times Real Estate Awards 2022 - South

### Brigade Palmgrove - Mysuru

Won the 'Premium Villa Project of the Year' award at the NDTV Property Awards 2018

### Brigade Cornerstone Utopia - East Bengaluru

Won the 'Integrated Township Project of the Year' award at the 11<sup>th</sup> Realty Plus Awards 2019 - South

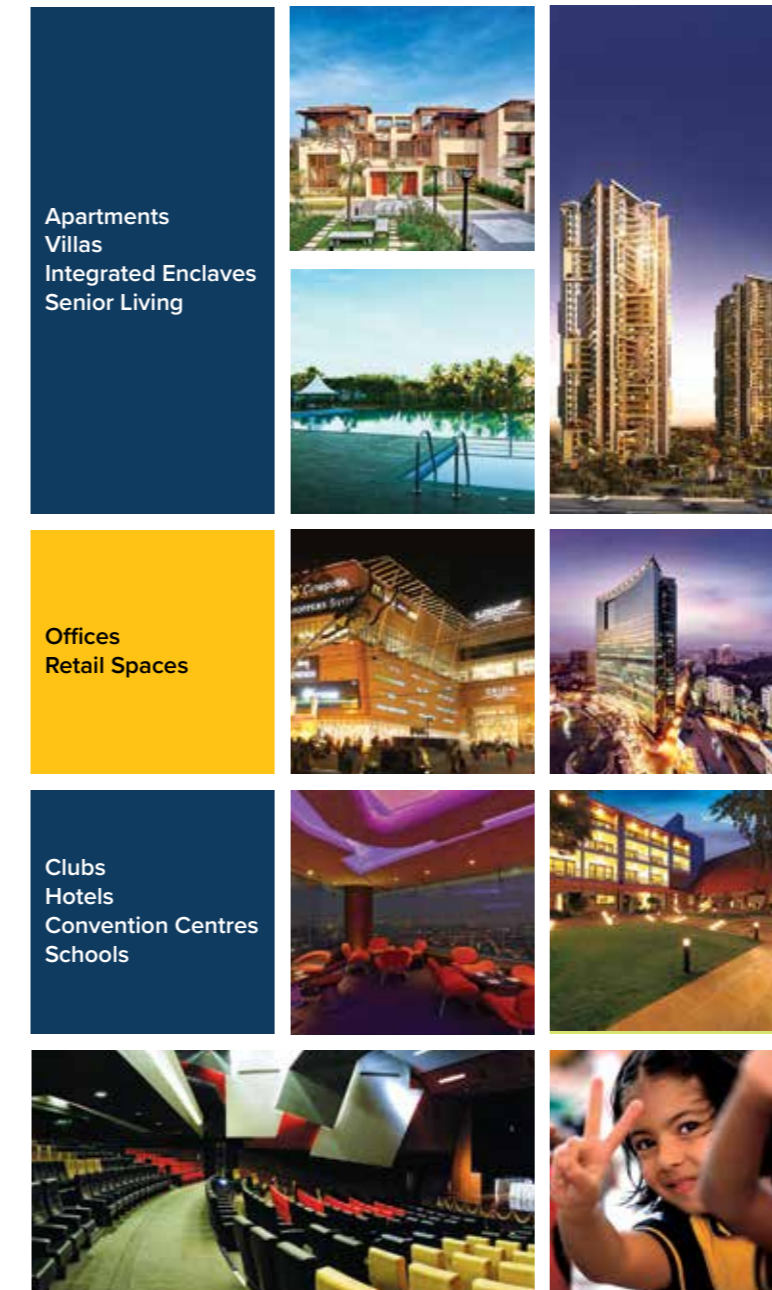
### Brigade Panorama - West Bengaluru

Won the award for 'Excellence in Delivery' at the 11<sup>th</sup> Realty Plus Awards 2019 - South

### Brigade Mountain View - Mysuru

Won the award for 'Best Residential Dwellings above 50 units in Mysuru' at the CARE Awards 2019

## MULTIPLE DOMAINS. SINGLE-MINDED COMMITMENT.



The Brigade Group is one of India's leading property developers with over three decades of expertise in building positive experiences for all stakeholders. Instituted in 1986, the company has developed many landmark buildings and transformed the skyline of cities across South India, namely – Bengaluru, Chennai, Hyderabad, Mysuru, Kochi, Mangaluru, Chikmagalur, and also has a presence in GIFT City, Gandhinagar in Gujarat, with developments across the Residential, Commercial, Retail, Hospitality and Education sectors. Since its inception, Brigade has completed 275+ buildings amounting to over 80 million Sq.ft. of developed space across a diverse real estate portfolio. Brigade assures best-in-class design and top-of-the-line facilities that exude elegance and sophistication. The Residential developments include villas, villaments, penthouses, premium residences, luxury apartments, value homes, urban studios, independent living for seniors, plotted developments and mixed-use lifestyle enclaves and townships. Over the years, the projects have been one-of-a-kind in the sector, for example Brigade developed Brigade Gateway, Bengaluru's first lifestyle enclave and Brigade Exotica, one of the tallest residential buildings in Bengaluru.

Brigade is among the few developers that also enjoys a reputation of developing Grade A Commercial properties. The license owners of the World Trade Center across South India, the Group's commercial spaces have top international clients operating out of them. Brigade also entered the co-working space with 'BuzzWorks' in March 2019.

Brigade Retail's first venture was the iconic, world-class Orion Mall at Brigade Gateway, subsequently expanding with Orion Avenue and Orion Uptown. Brigade's Hospitality offerings include star hotels, recreational clubs, convention centres and The Baking Company, a unique patisserie. Brigade is the founder of The Indian Music Experience (IME) – a monumental and philanthropic initiative that is India's only hi-tech interactive music museum. It was conceived to give back to society and sensitise the present generation to the rich culture of Indian music. The Group contributes in numerous ways towards community development, health, education, and the environment. Through the Brigade Foundation, the brand has successfully opened three schools in its name, offering a holistic education; has conducted large-scale tree plantation drives; spruced up parts of the city; revived public recreational spots like lakes and parks, established a skill development centre; and will be establishing two not-for-profit 100-bed hospitals.

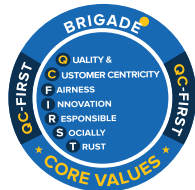
Brigade Real Estate Accelerator Program (REAP), Asia's first PropTech accelerator program, is a prelude to the changing trends in the real estate industry, which is standing on the cusp of disruption. REAP brings along innovators and inventors to use technology as a catalyst for creating sustainable and scalable businesses in the real estate industry. The 'Great Place to Work Institute' has consistently recognised the Brigade Group as one of India's best companies to work for in the real estate industry. This responsible attitude and innovative mind-set combined with uncompromising quality of the projects over the years has created a brand of outstanding repute.



**BRIGADE**

Building Positive Experiences

Our core values



Founders



---

**BrigadeHorizon.com**

---

**Site Marketing Office:**  
Brigade Horizon,  
Opp. Rajarajeswari Dental College  
Mysore Road, Bengaluru - 560 087

**Registered & Corporate Office:**  
29<sup>th</sup> & 30<sup>th</sup> Floor,  
WTC Bangalore@Brigade Gateway Campus,  
Dr. Rajkumar Road, Malleswaram-Rajajinagar,  
Bengaluru - 560 055

**Dubai**  
Brigade Enterprises Ltd.,  
902, Nassima Tower, Sheikh Zayed Rd,

Offices also at: CHENNAI • HYDERABAD • MYSURU