



Prathmesh Darshan

The radiance of urban luxury

REDEFINE LUXURY REDISCOVER LIFE

Jaydeep Group brings to you yet another architectural brilliance Prathmesh Darshan in Ghatkopar East, located opp. Railway station, near Jain Derasar.

Experience the fullness that life has to offer towering in a haven over the horizon in these beautifully designed and elegantly finished 1 & 2 BHK apartments. The all inclusive design of this splendid layout incorporates well planned shops at the ground floor, while the first floor level makes provisions of efficiently planned office spaces, to make your living experience one of comfort and ease.

Located near Ghatkopar Station East, the project is well connected to Eastern Express Highway. With shopping, medical and educational facilities nearby, the project is an ideal choice in Ghatkopar for today's homemaker.



A NEW LEVEL OF **INSPIRED** LIVING

LIVING ROOM

- Vitrified flooring in living room and passage area.
- Aluminum sliding windows with one mosquito panel in every window.
- Adequate electrical points for cable and telephone.
- Modular switches of ISI marked.
- Wooden door frames with flush doors.

KITCHEN

- Vitrified flooring in front of platform with full height dado tiles upto beam height.
- Granite kitchen platform.
- Stainless steel sink.
- U-PVC concealed piping.
- Angle stop cock as provision for water purifier.
- Electric power points for washing machine, water purifier, mixer, microwave etc.
- Modular switches of ISI marks.

BEDROOM

- 2'0"X2'0" vitrified flooring.
- Modular switches of ISI marked.
- Aluminum sliding window with one mosquito prevention panel.
- Flush door with granite frame.

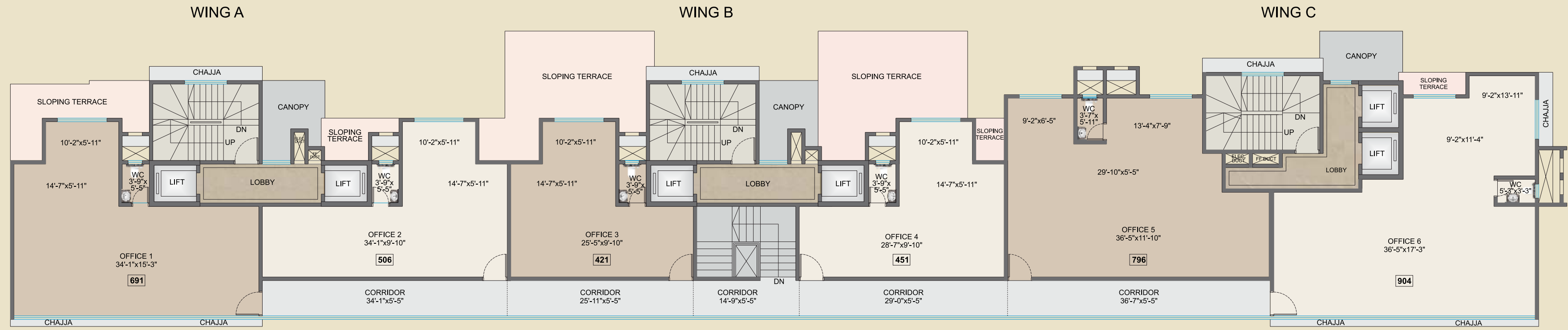
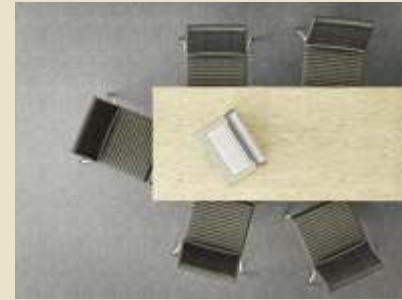
TOILET

- U-PVC concealed piping in toilets.
- Antiskid flooring and decorative tiles on walls upto beam level.
- Reputed brand fittings with three in one shower mixer.
- Sanitary ware of reputed brand.
- Modular switches of ISI marked.
- Bakelite door in anodised aluminum framing with marble or granite door frame.

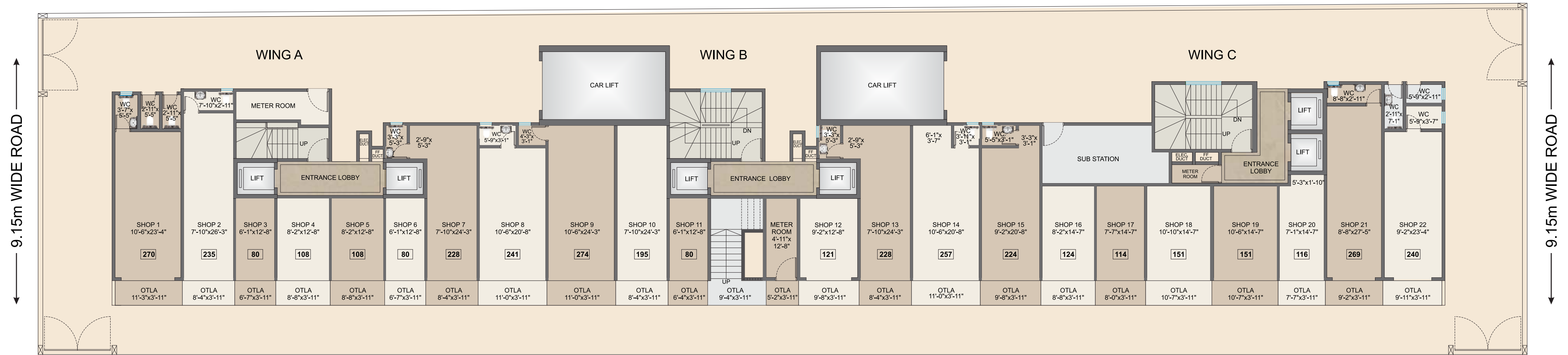
LIFTS

- Lifts of Reputed make.





1ST FLOOR PLAN



GROUND FLOOR PLAN

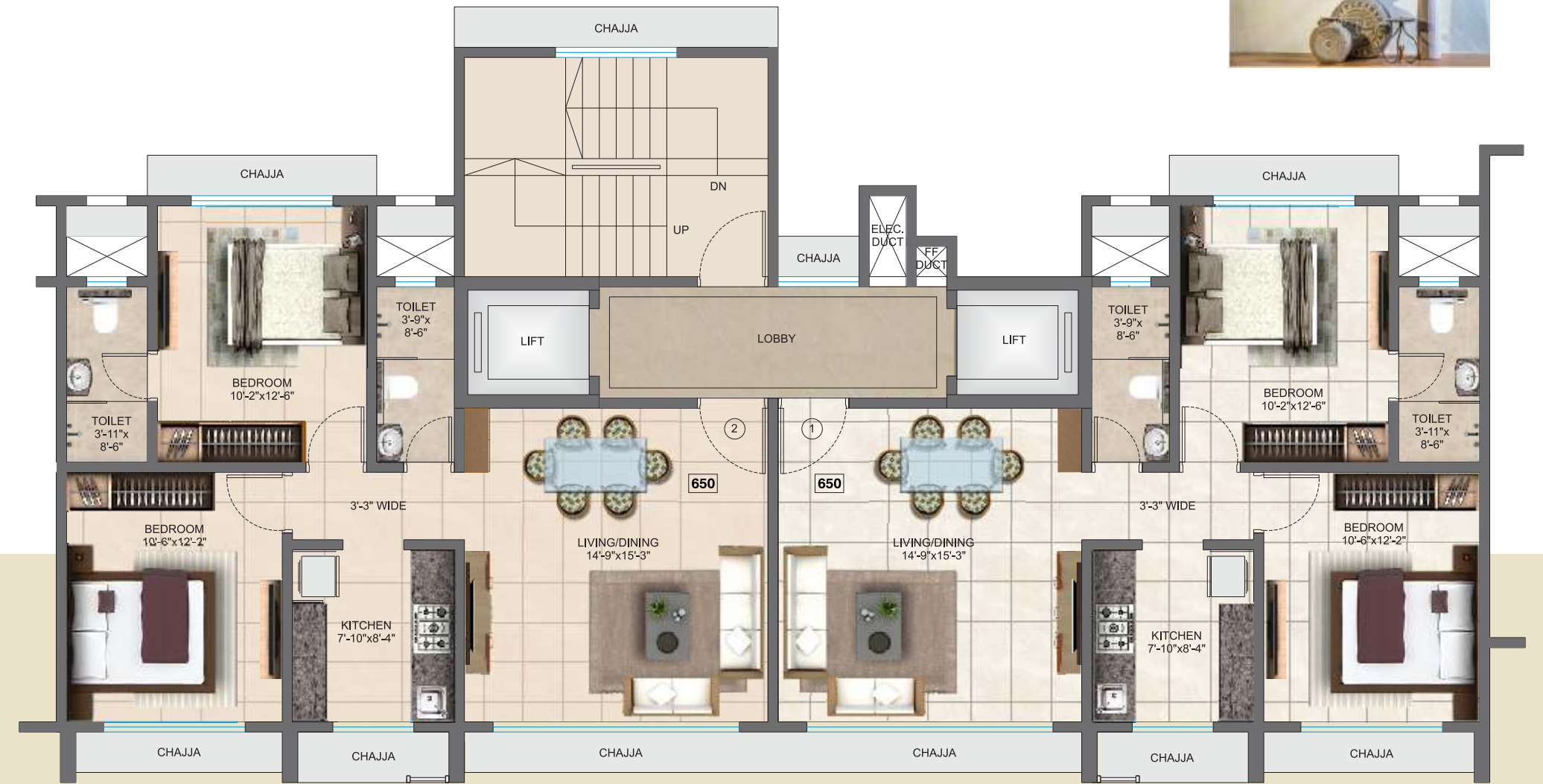


WING C



TYPICAL FLOOR PLAN (2ND TO 15TH)

WING B



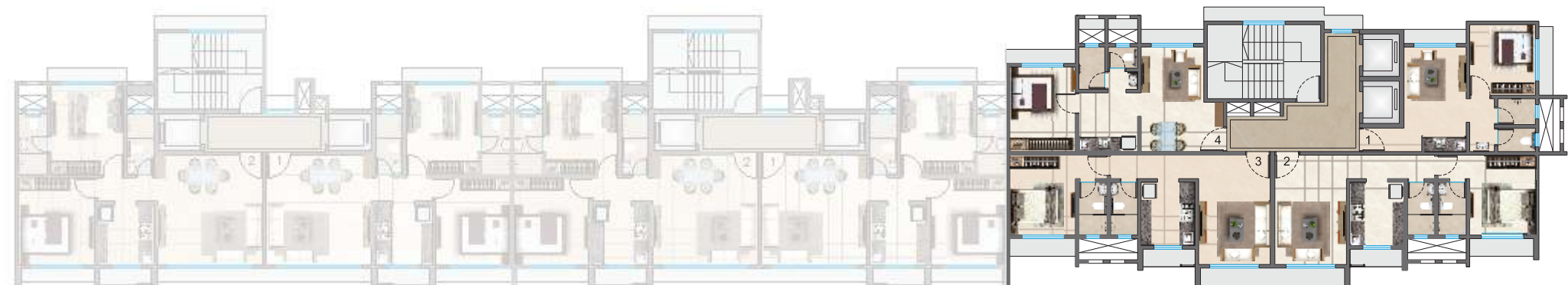
TYPICAL FLOOR PLAN (2ND TO 15TH)



WING A

WING B

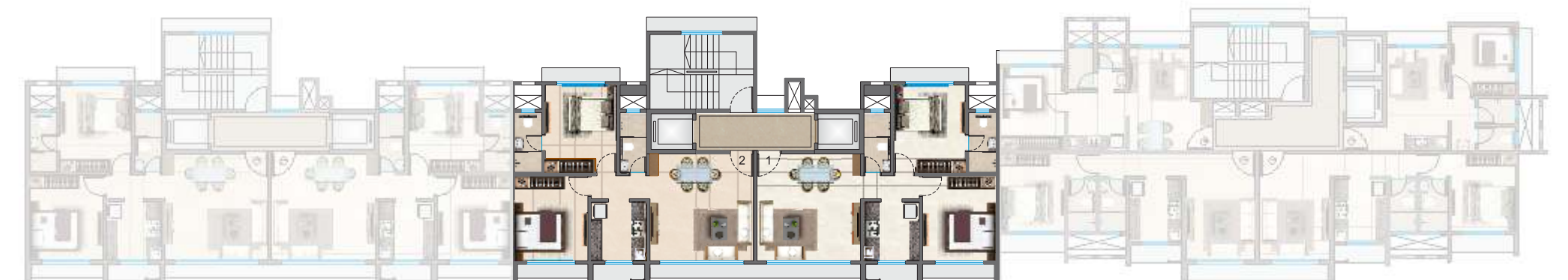
WING C



WING A

WING B

WING C





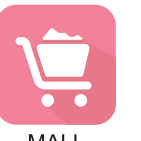
TYPICAL FLOOR PLAN (2ND TO 15TH)



METRO



RAILWAY



MALL



DERASAR



SCHOOL COLLEGE

Prathmesh Darshan

Bldg. no.184, Pant Nagar, Opp. Ghatkopar railway station
Ghatkopar(East), Mumbai - 75





Jaydeep Group, a name synonymous with diligent construction, utmost quality and financial integrity has constructed premium architectural living spaces in suburbs like Sion, Chembur, Nahur, Mulund and Thane. A core team of leading Architects and Technical consultants aid the group to carry out Redevelopment projects with benchmark quality and modern amenities keeping in mind overall well being of society residents.



Prince Tower, Sion



Mulund (W)



Imperial Galaxy, Thane



Prathmesh View Residency, Bhandup

Developers



Jaydeep Mahalaxmi Construction

Builders & Developers

7/8 Patidar Complex, Kannamwar Nagar No. 2, Near Vikas High School, Opp Police Chowki, Vikroli (East), Mumbai - 400 083.
Tel.: 2579 1778, 6504 4638 • Fax : 2579 1778 • Email: jaydeepmahalaxmi.jv@gmail.com

Architect
Space Moulder

Consulting Architect
KPA

RCC Consultant
P. S. Babaria

Legal Advisor
Pramodkumar Vora & Co.

Disclaimer : The Developers reserve the right to change plans, specifications and features without prior notice or obligation, at their sole discretion and subject to approval of Government authorities. Specifications, writeup, internal layouts, plans and pictures shown in this booklet are only indicative. All renderings, floor plans, pictures and maps are the artist's conceptions and not actual depictions of the building, its walls, roadways or landscaping.