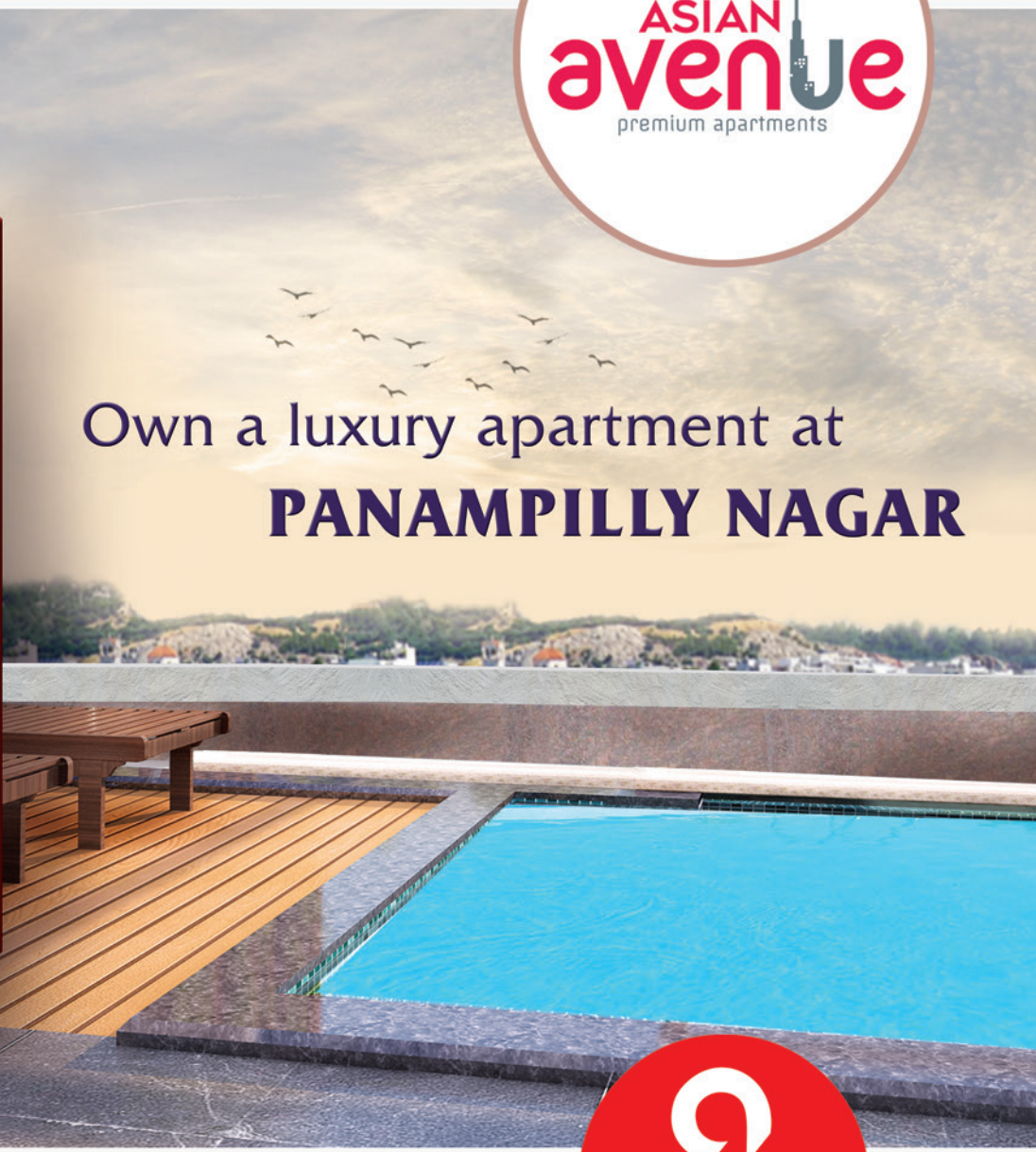




Own a luxury apartment at
PANAMPILLY NAGAR



K-RERA/PRJ/ERN/018/2021
www.rera.kerala.gov.in





Located in **PANAMPILLY NAGAR**
the most preferred residential
area at **KOCHI**

**From Desk of
CMD**

As a proficient Builder & Property developer, our passion for creating exceptional spaces upgrading life styles and driving innovation in the industry has been the driving force behind my success. We are dedicated to delivering the projects that not only meet the functional and aesthetic needs of the community but also contribute to sustainable and environmentally responsible development.

Our unwavering commitment to excellence and the ability to navigate complex challenges have earned us the trust and respect of Business Associates, Stake Holders, Colleagues and well wishers. We are excited to continue leveraging our expertise and vision to drive the next generation of impactful building and development projects. Asian Developers, results driven builder & property developer with a proven background of success spanning over two decades. Adept at managing all aspects of building and developments process from initial project conceptualization to final delivery.

Asian Developers, known for delivering high quality projects at pocket friendly budgets within the set timeline constraints, consistently exceeding customers expectations. Championed the adoption of sustainable building practices and technologies, integrating green initiatives into project designs and constructions methods.

P C Jose
Managing Director





“CHOOSING WHERE TO LIVE IS ONE OF THE IMPORTANT DECISION YOU CAN MAKE”

Asian Avenue at Panampilly Nagar in Kochi is the latest project announced by Asian Developers sense with the ideal blend of comfort and luxuriousness. Avenue guarantees tranquility along with richness in the most searched locality. Construction is in high pace and will be handed over anytime soon.

Asian Avenue is yet another project by Asian Developers located close to Panampilly walkway, Metro Station, Banks, Schools, Colleges, Hospitals, Food joints, Shopping Mall, Church, Temples, Masjids. Easy access to National Highways, MG road, Marine Drive, Parks and many more. These upscale 3BHK apartments will be an asset in the financial capital. Placed in a location with the ease of Urban Living. Avenue will be a perfect choice for city living, guaranteeing high Appreciation Value & ROI.



K-RERA/PRJ/ERN/018/2021
www.rera.kerala.gov.in





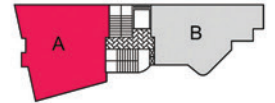
*HOME IS NOT JUST A PLACE...
IT'S A FEELING*

To make it more enjoyable we give special care to style and aesthetic since we believe a home is the one and only place where you are free to express your desires and emotions. Asian developers provide you your own living space with an elegant blend of beauty and city charm.

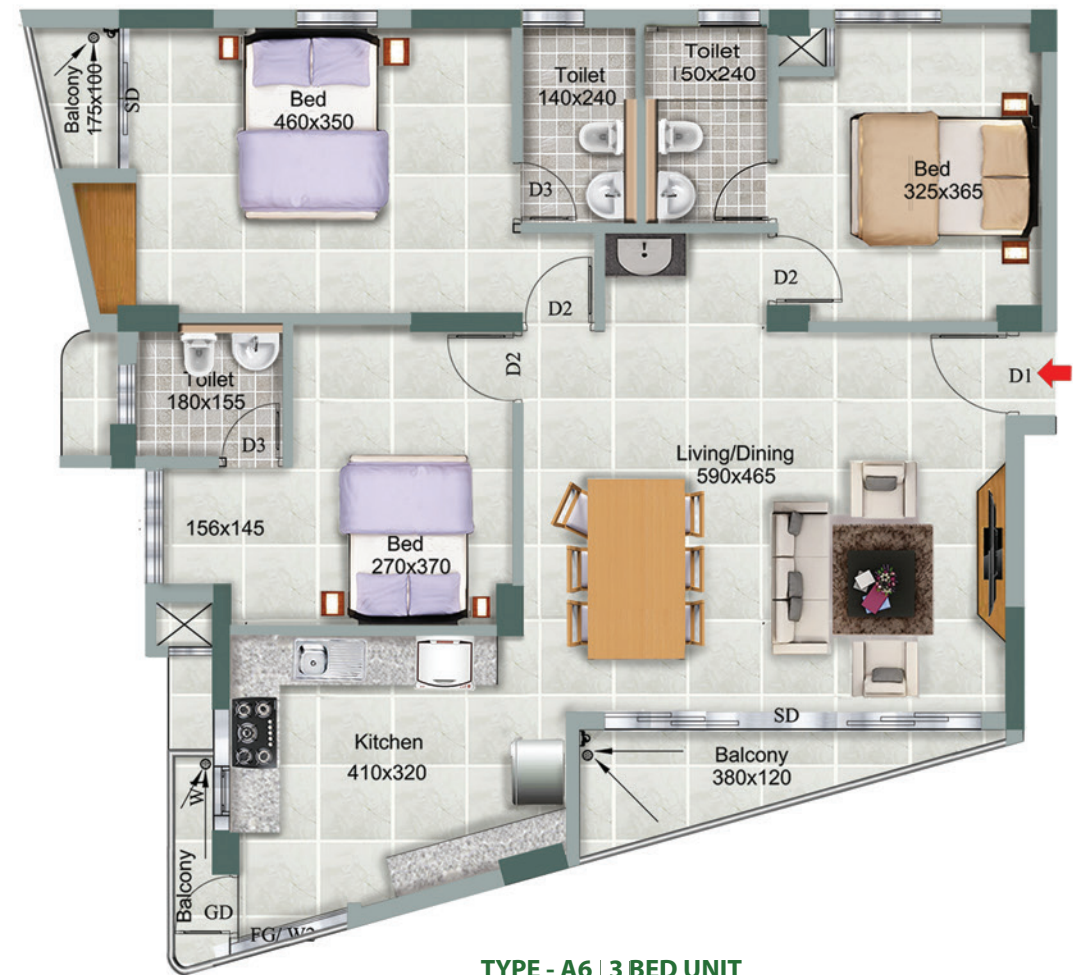


* Pictures are for representative purpose only.

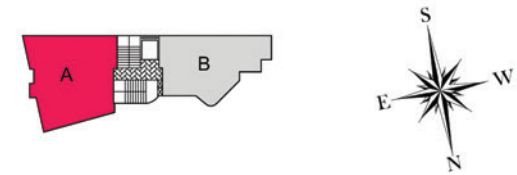




**TYPE - A TO A5 | 3 BED UNIT
GROUND TO FIFTH FLOOR | 1608 SQ FT**



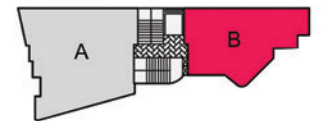
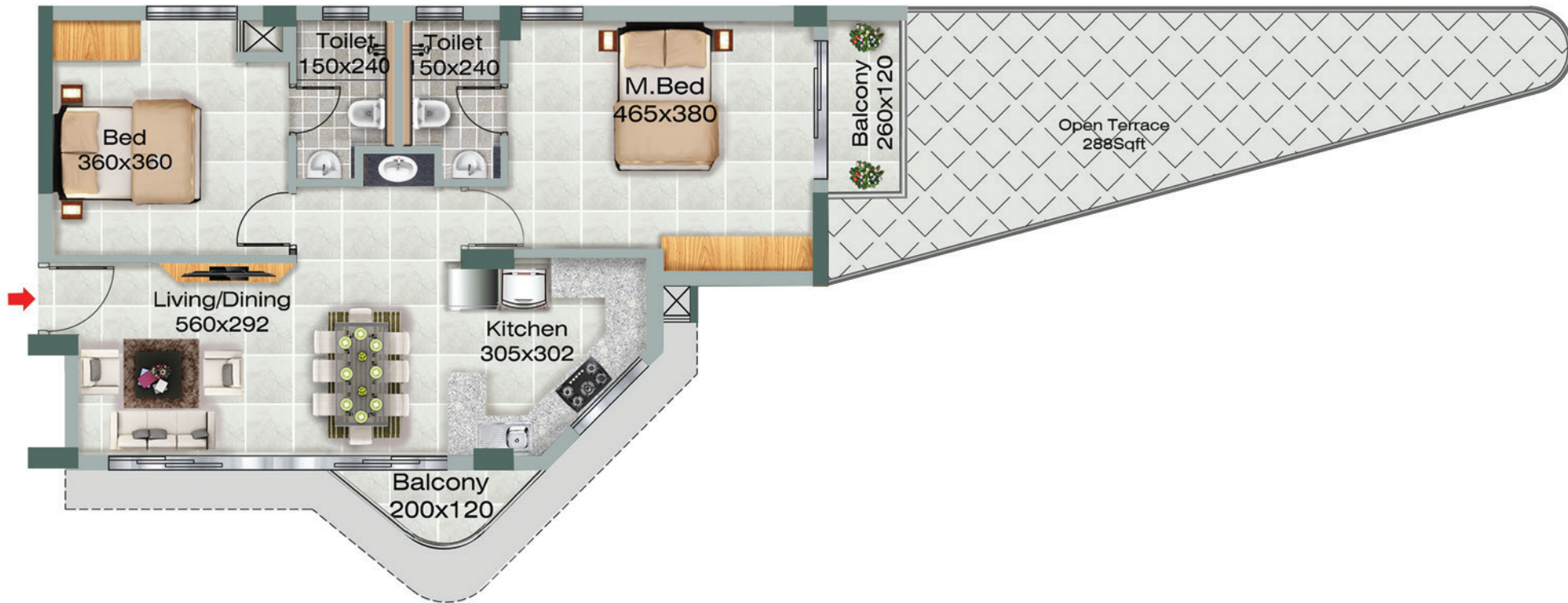
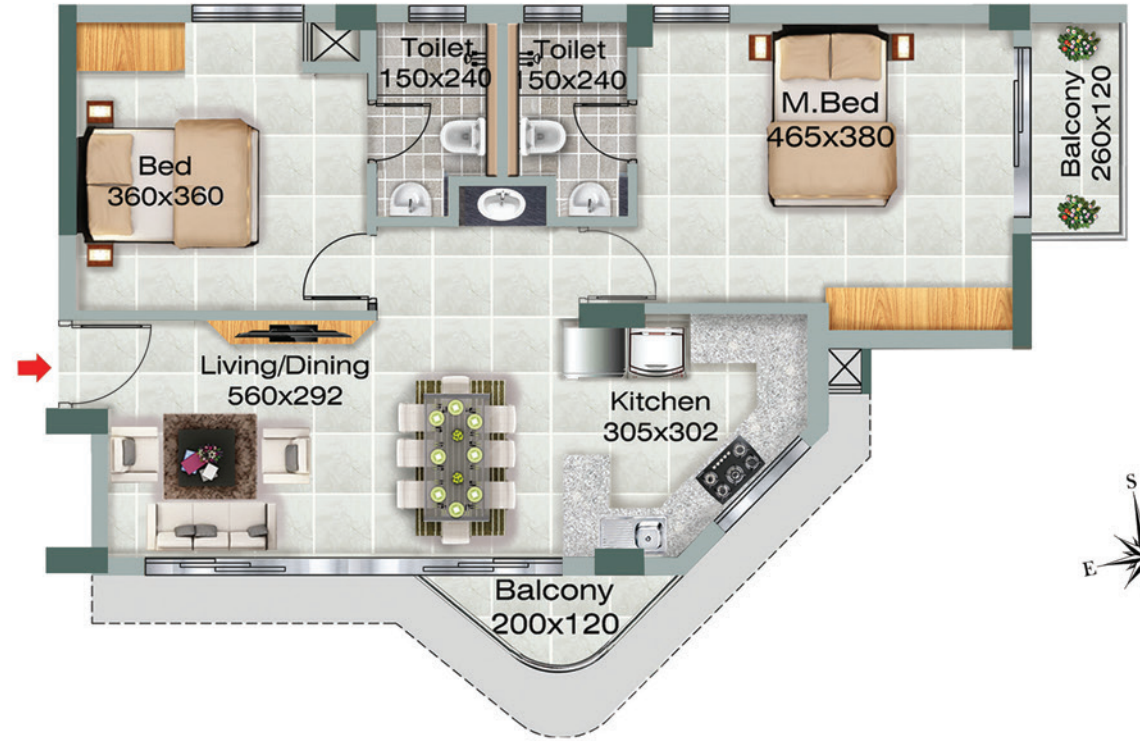
**TYPE - A6 | 3 BED UNIT
6TH FLOOR | 1608 SQ FT.**



TYPE - A7 | 3 BED UNIT | 7TH FLOOR | 1372 SQFT + OPEN TERRACE 170 SQFT



TYPE- A8 TO A10 | 3 BED UNIT | A8 TO A10 TYPICAL FLOOR





SPECIFICATIONS

ENTRANCE LOUNGE

FLOOR: Vitrified Tile
 WALLS: Acrylic Emulsion Paint on Putty Finish
 CEILING: Gypsum board false ceiling with Acrylic Emulsion paint
 DOORS: Toughened Glass with SSPatch fittings and handle
 FIXTURES: Elegant designer furniture and furnishings
 HVAC: Ceiling Fan
 ELECTRICAL: Ample Lighting

LOBBIES

WALLS: Acrylic Emulsion Paint on Putty Finish
 CEILING: Gypsum board false ceiling for entrance lobby & Acrylic Emulsion paint on putty finish
 DOORS: Powder coated Aluminium glazed doors
 ELECTRICAL: Ample Lighting

RECREATION ROOM

FLOOR: Vitrified Tile
 WALLS: Acrylic Emulsion Paint on Putty Finish
 CEILING: Acrylic Emulsion Paint on Putty Finish
 DOORS: Powder coated Aluminium glazed doors
 HVAC: Ceiling Fan
 ELECTRICAL: Ample Lighting

STAIRWAYS & CORRIDORS

FLOOR: Vitrified Tiles
 WALLS: Acrylic Emulsion Paint with vitrified tile skirting for stairways & corridors
 CEILING: Acrylic Emulsion Paint on Putty Finish
 WINDOWS: Powder Coated Aluminium Sliding Window
 DOOR: Powder coated Aluminium fully glazed doors
 FIXTURES: MS Handrails
 ELECTRICAL: Ample lighting

LIFT

Passenger lift

GENERATOR

Generator backup for lift, TV, Light and Fan

FITNESS CENTRE

WALLS: Acrylic Emulsion Paint on Putty Finish
 CEILING: Acrylic Emulsion Paint on Putty Finish
 WINDOWS: Powder Coated Aluminium Sliding Window
 DOOR: Powder coated Aluminium fully glazed doors
 FIXTURES & FITTINGS : Modern Gym Equipments
 ELECTRICAL: Ample lighting

FOYER, SITTING & DINING

FLOOR: Vitrified Tiles
 WALLS: Acrylic Emulsion Paint on Putty Finish
 CEILING: Acrylic Emulsion Paint on Putty Finish
 WINDOWS: Powder Coated Aluminium Sliding Window
 ENTRANCE DOOR: Fully panelled Veneered door.
 HVAC: Provision for Ceiling Fan in Sitting & Dining Rooms
 CP FITTINGS: Wash basin CERA/ Equivalent make & CP fittings of Cera/equivalent
 ELECTRICAL: Modular Switches Wipro/Equivalent concealed conduit wiring for Cable TV & Telephone in Sitting room, Intercom point will be provided in the Foyer/Sitting room

BEDROOMS

FLOOR: Vitrified Tiles
 WALLS: Acrylic Emulsion Paint on Putty Finish
 CEILING: Acrylic Emulsion Paint on Putty Finish
 WINDOWS: Powder Coated Aluminium Sliding Windows
 DOOR: Laminated Flush Doors
 HVAC: Provision for ceiling Fan & AC
 ELECTRICAL: Modular Switches Wipro/ equivalent

BALCONY

FLOOR: Vitrified Tiles
 WALLS: Exterior Acrylic Emulsion Paint on Putty Finish
 CEILING: Acrylic Emulsion Paint on Putty Finish
 DOOR: Powder Coated Aluminium Sliding Doors
 FIXTURES: MS Handrails
 ELECTRICAL: Ceiling light provision

FIRE & SAFETY

Modern fire fighting systems as per Government safety norms & Surveillance camera

KITCHEN

FLOOR: Vitrified Tile
 WALLS: Acrylic Emulsion Paint on Putty Finish
 CEILING: Acrylic Emulsion Paint on Putty Finish
 WINDOWS: Powder coated Aluminium sliding windows
 HVAC: Provision for Exhaust Fan
 ELECTRICAL: Adequate Light Points and sockets

TOILETS

FLOOR: Superior Qualified Anti-skid Ceramic Tiles
 WALLS: Superior Quality Glazed Ceramic Tiles
 DOORS: Laminated Flush Doors
 HVAC: Provision for Exhaust Fan
 FIXTURES & FITTINGS: Wash Basin, EWC, Taps & CP Fittings
 ELECTRICAL: Provision for Geyser

MAKE BRANDS

CEMENT	ACC/ Ambuja/ Equivalent
STEEL	ISI Steels/ Equivalent
DOORS	Laminated flush doors
PLUMBING	
PIPES	Supreme/Finolex/Equivalent
CP FITTINGS	Cera/ Hindware/ Equivalent
SANITARY FITTINGS	Cera/ Hindware/Equivalent
ELECTRICAL	
CABLES	Finolex/Havells/Equivalent
SWITCHES	Finolex/Havells/Equivalent
TILES	
VITRIFIED	Cera//Kajaria/ Johnson/ Somany/ Equivalent
CERAMIC	Cera//Kajaria/ Johnson/ Somany/ Equivalent
GLAZED WALL TILES	Cera//Kajaria/ Johnson/ Somany/ Equivalent
PAINT	Asian /Berger/Nerolac/ Equivalent
LIFT	Otis/Kone/ Johnson/Thyssenkrupp/Omega
GENERATOR	Kirlosker/TATA/ Cummins/Mahendra



LOCATION MAP

PROXIMITY TO CITY CENTRES

Panampilly Nagar Walkway
350 Meter



MetroStation
1 km



Goshree Walkway
5 km



Medical Trust
2 km



Passport Office
100 Meter



CCTV Surveillance



Passenger Lift



Lobby



Fitness Centre



Swimming Pool



Children's Play Area





Our prestigious projects in KOCHI



**ASIAN ALORA- PACHALAM
ERNAKULAM NORTH
3 BHK Apartment**



ASIAN AMARANTA -EDAPPALLY



ASIAN NJP-TRIPUNITHURA



Metaspace, Kakkanad



Villa Kakkanad



ASIAN ALORA
3 BHK Apartment @
Pachalam, Ernakulam North



Reg.Office:

Asian Developers

49/470 F2, 5th floor, Asian Tower, NH 47, Vyttila Jn., Kochi-682 019.

Email: sales@asiandevlopers.in

Visit us :
www.asiandevlopers.in



Disclaimer: The contents provided in this brochure are in good faith and for general informational purpose only. Asian Developers make no warranties either expressed or implied. All the informations including samples, URL and the internet references are subject to change without notice. Asian Developers accepts no liability whatsoever for any consequential loss arising from the use of contents.

* The stills & photographs displayed are an artistic creation. The developer reserves the right to add, delete, alter or modify any part of the offering described here in.