

THE BRIDGE ACROSS THE SKY OF DREAMS





THE ALTIUS LIFE.

43 FLOORS ABOVE
CHENNAI'S HIGHEST ASPIRATIONS.

Where the skies are a deeper shade of blue, and where the sea shimmers in the distance, is a lifestyle that raises the standard of fine living in Chennai. Residences that offer true privacy with no common walls, unhindered views and a skybridge that promises experiences that are truly one of a kind.

Artist's Impression.

Materials, colours, plants, etc., are all for representation only. May vary as per market availability.



Artist's impression.

Materials, colours, plants, etc., are all for representation only. May vary as per market availability.

CHENNAI'S TALLEST RESIDENTIAL SKYBRIDGE

Up here,
it's not just the air that's rarefied.
Ethereal views meet magical moments
to create truly otherworldly experiences.
Just what you'll come to expect
from a home with a terrace bridge,
surrounded by the seas & the skies.



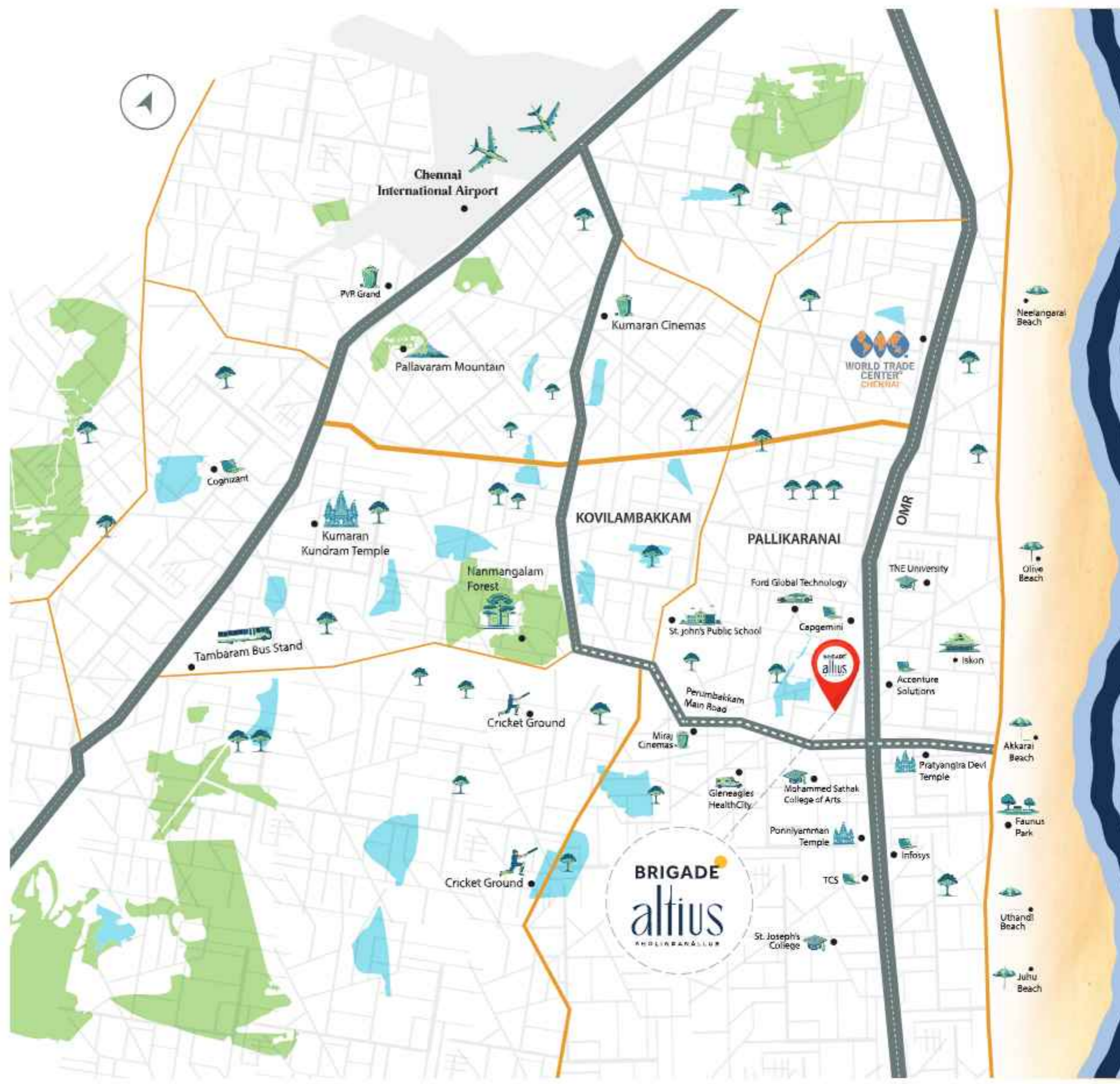
Artist's impression.

Materials, colours, plants, etc., are all for representation only. May vary as per market availability.

THE BRIDGE BETWEEN AN EXOTIC EVENING AND AN INDELIBLE MEMORY.

Twilight flows gloriously into a starry night. And after you've immersed yourself in the moment, perhaps it's time for some rare moments with each other at the expansive and unique podium-level clubhouse. Needless to say, it's the promise of an experience that will linger in your thoughts well beyond the night.

LOCATED TO ELEVATE EVERY ASPECT OF LIFE



NEIGHBOURHOOD

EDUCATIONAL INSTITUTIONS

- COLLEGES**
 Sathyabama University
 Jeppiaar Engineering College
 St. Joseph's College of Engineering

SCHOOLS

- Babaji Vidya Ashram
 Gateway International School
 Velammal NewGen School
 Hiranandani Upscale School
 Narayana e-Techno School
 Orchids - The International School
 Sishya OMR School
 American International School
 Velammal Bodhi Campus

ENTERTAINMENT & LEISURE

- ECR Beach
 Vivira Mall
 Marina Mall
 BSR Mall
 Phoenix Marketcity
 VGP Universal Kingdom
 Dakshina Chitra

GROCERIES & MART

- Nilgiris
 Brown Tree
 Lexe Organics
 Maharaja Super Mart
 New Gmart Supermarket

IT/ITES

- World Trade Center Chennai
 SIPCOT IT Park
 RMZ Millenia Business Park
 Eleot SEZ IT Park
 Tata Consultancy Solutions
 Cognizant
 Tech Mahindra
 HCL Technologies
 Wipro
 Accenture
 Chennai One Software Park

HOSPITALS

- Apollo Speciality Hospital
 Gleneagles Hospital
 Chettinad Health City
 Dr. Kamakshi Memorial Hospital
 VCure Hospital
 Swaram Multispeciality Hospital

METRO STATION

- Sholinganallur (Upcoming)

CONNECTIVITY

- ECR

Map not to scale.



AMENITIES



ABOVE
THE
ORDINARY
AMENITIES



DAILY
CUP
OF
'AH!'

- Children's Play Area
- Walking Loop
- Elders' Lawn
- Tot Lot
- Swimming Pool
- Jacuzzi
- Box Cricket



- Outdoor Gym
- Yoga Deck
- Lounging Deck
- Futsal
- Multipurpose Court
- Open Air Theatre
- Coffee Shop



YOUR
WALK
OF
LIFE

THEATRE
OF
FINE
LIVING





Artist's Impression. Furniture and layout will not be part of the offering.

THE EVERYDAY QUIET GETAWAY



Artist's Impression. Furniture and layout will not be part of the offering.

PODIUM-LEVEL POOL

TERRACE FLOOR PLAN



- | | | |
|--|---|--|
| <ul style="list-style-type: none"> 1. Tot Lot 2. Outdoor Gym 3. Yoga Deck | <ul style="list-style-type: none"> 4. Seating Decks 5. Skybridge 6. Party Area | <ul style="list-style-type: none"> 7. Lounge Area 8. Sea View Terraces 9. Solar Panels on Terrace |
|--|---|--|

The information depicted herein viz., master plans, floor plans, furniture layout, fittings, illustrations, specifications, designs, dimensions, rendered views, colours, amenities and facilities etc., are subject to change without notifications as may be required by the relevant authorities or the Developer's architect, and cannot form part of an offer or contract. Whilst every care is taken in providing this information, the Developer cannot be held liable for variations. All illustrations and pictures are artist's impression only. The information is subject to variations, additions, deletions, substitutions and modifications as may be recommended by the company's architect and/or the relevant approving authorities. The Developer is wholly exempt from any liability on account of any claim in this regard. (1 square metre = 10.764 square feet). E & OE. All dimensions and calculations are done in metric system (M/Sq.m), and imperial system (Ft/Sq.ft) shown is for reference only. All dimensions indicated in the drawing are from unfinished surfaces, excluding plaster thickness and tile thickness.

SIXTH FLOOR PLAN



1. Tot Lot
2. Senior Citizens' Lawn

3. Seating Area
4. Private Gardens

The information depicted herein viz., master plans, floor plans, furniture layout, fittings, illustrations, specifications, designs, dimensions, rendered views, colours, amenities and facilities etc., are subject to change without notifications as may be required by the relevant authorities or the Developer's architect, and cannot form part of an offer or contract. Whilst every care is taken in providing this information, the Developer cannot be held liable for variations. All illustrations and pictures are artist's impression only. The information is subject to variations, additions, deletions, substitutions and modifications as may be recommended by the company's architect and/or the relevant approving authorities. The Developer is wholly exempt from any liability on account of any claim in this regard. (1 square metre = 10.764 square feet). E & OE. All dimensions and calculations are done in metric system (M/Sq.m), and imperial system (Ft/Sq.ft) shown is for reference only. All dimensions indicated in the drawing are from unfinished surfaces, excluding plaster thickness and tile thickness.

FOURTH FLOOR PLAN



- | | | |
|--------------------------------|-------------------|-----------------------------|
| 1. Pool Deck | 6. Shallow Pool | 11. Sunken Court |
| 2. Banquet Hall Spill-out Area | 7. Swimming Pool | 12. Coffee Shop |
| 3. Water Court Platforms | 8. Jacuzzi | 13. Peripheral Seating Area |
| 4. Sunken Seating | 9. Kid's Pool | 14. Private Gardens |
| 5. Reflective Water Pool | 10. Water Feature | |

The information depicted herein viz., master plans, floor plans, furniture layout, fittings, illustrations, specifications, designs, dimensions, rendered views, colours, amenities and facilities etc., are subject to change without notifications as may be required by the relevant authorities or the Developer's architect, and cannot form part of an offer or contract. Whilst every care is taken in providing this information, the Developer cannot be held liable for variations. All illustrations and pictures are artist's impression only. The information is subject to variations, additions, deletions, substitutions and modifications as may be recommended by the company's architect and/or the relevant approving authorities. The Developer is wholly exempt from any liability on account of any claim in this regard. (1 square metre = 10.764 square feet). E & OE. All dimensions and calculations are done in metric system (M/Sq.m), and imperial system (Ft/Sq.ft) shown is for reference only. All dimensions indicated in the drawing are from unfinished surfaces, excluding plaster thickness and tile thickness.

GROUND FLOOR PLAN



- | | | | |
|----------------------------------|-------------------------|--------------------------|------------------------|
| 1. Grand Arrival | 6. Entry Water Features | 11. Drop off Plaza | 16. Pet Park |
| 2. Clock Tower | 7. Arrival Lawn | 12. Pedestrian Loop | 17. Futsal |
| 3. Entry Portal & Security Kiosk | 8. Altius Forecourt | 13. Seating Area | 18. Multipurpose Court |
| 4. Grand Drive | 9. Feature Element | 14. Outdoor Gym | 19. Box Cricket |
| 5. Pedestrian Gate | 10. Fire Driveway | 15. Children's Play Area | 20. Service Yards |

The information depicted herein viz., master plans, floor plans, furniture layout, fittings, illustrations, specifications, designs, dimensions, rendered views, colours, amenities and facilities etc., are subject to change without notifications as may be required by the relevant authorities or the Developer's architect, and cannot form part of an offer or contract. Whilst every care is taken in providing this information, the Developer cannot be held liable for variations. All illustrations and pictures are artist's impression only. The information is subject to variations, additions, deletions, substitutions and modifications as may be recommended by the company's architect and/or the relevant approving authorities. The Developer is wholly exempt from any liability on account of any claim in this regard. (1 square metre = 10.764 square feet). E & OE. All dimensions and calculations are done in metric system (M/Sq.m), and imperial system (Ft/Sq.ft) shown is for reference only. All dimensions indicated in the drawing are from unfinished surfaces, excluding plaster thickness and tile thickness.

TYPICAL FLOOR PLAN

TOWER - 1



Key Plan



The information depicted herein viz., master plans, floor plans, furniture layout, fittings, illustrations, specifications, designs, dimensions, rendered views, colours, amenities and facilities etc., are subject to change without notifications as may be required by the relevant authorities or the Developer's architect, and cannot form part of an offer or contract. Whilst every care is taken in providing this information, the Developer cannot be held liable for variations. All illustrations and pictures are artist's impression only. The information is subject to variations, additions, deletions, substitutions and modifications as may be recommended by the company's architect and/or the relevant approving authorities. The Developer is wholly exempt from any liability on account of any claim in this regard. (1 square metre = 10.764 square feet). E & OE. All dimensions and calculations are done in metric system (M/Sq.m), and imperial system (Ft/Sq.ft) shown is for reference only. All dimensions indicated in the drawing are from unfinished surfaces, excluding plaster thickness and tile thickness.

TYPICAL FLOOR PLAN

TOWER - 2



UNIT -7 3B3T+STUDY

UNIT -8 3B3T

UNIT -9 3B3T+MAID



UNIT -12 3B3T+MAID

UNIT -11 3B3T

UNIT -10 3B3T

Key Plan



The information depicted herein viz., master plans, floor plans, furniture layout, fittings, illustrations, specifications, designs, dimensions, rendered views, colours, amenities and facilities etc., are subject to change without notifications as may be required by the relevant authorities or the Developer's architect, and cannot form part of an offer or contract. Whilst every care is taken in providing this information, the Developer cannot be held liable for variations. All illustrations and pictures are artist's impression only. The information is subject to variations, additions, deletions, substitutions and modifications as may be recommended by the company's architect and/or the relevant approving authorities. The Developer is wholly exempt from any liability on account of any claim in this regard. (1 square metre = 10.764 square feet). E & OE. All dimensions and calculations are done in metric system (M/Sq.m), and imperial system (Ft/Sq.ft) shown is for reference only. All dimensions indicated in the drawing are from unfinished surfaces, excluding plaster thickness and tile thickness.

TYPICAL FLOOR PLAN

TOWER - 3



Key Plan



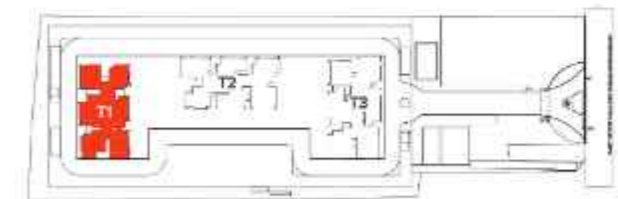
The information depicted herein viz., master plans, floor plans, furniture layout, fittings, illustrations, specifications, designs, dimensions, rendered views, colours, amenities and facilities etc., are subject to change without notifications as may be required by the relevant authorities or the Developer's architect, and cannot form part of an offer or contract. Whilst every care is taken in providing this information, the Developer cannot be held liable for variations. All illustrations and pictures are artist's impression only. The information is subject to variations, additions, deletions, substitutions and modifications as may be recommended by the company's architect and/or the relevant approving authorities. The Developer is wholly exempt from any liability on account of any claim in this regard. (1 square metre = 10.764 square feet). E & OE. All dimensions and calculations are done in metric system (M/Sq.m), and imperial system (Ft/Sq.ft) shown is for reference only. All dimensions indicated in the drawing are from unfinished surfaces, excluding plaster thickness and tile thickness.

UNIT PLAN - 01

3 BHK + MAID'S ROOM



Key Plan



Block Plan



Super Built-up Area	2208 sq.ft.
Unit Carpet Area	1332 sq.ft.
Balcony + VRV Platform	83 sq.ft.

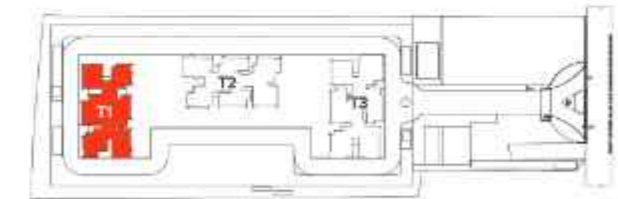
The information depicted herein viz., master plans, floor plans, furniture layout, fittings, illustrations, specifications, designs, dimensions, rendered views, colours, amenities and facilities etc., are subject to change without notifications as may be required by the relevant authorities or the Developer's architect, and cannot form part of an offer or contract. Whilst every care is taken in providing this information, the Developer cannot be held liable for variations. All illustrations and pictures are artist's impression only. The information is subject to variations, additions, deletions, substitutions and modifications as may be recommended by the company's architect and/or the relevant approving authorities. The Developer is wholly exempt from any liability on account of any claim in this regard. (1 square metre = 10.764 square feet). E & OE. All dimensions and calculations are done in metric system (M/Sq.m), and imperial system (Ft/Sq.ft) shown is for reference only. All dimensions indicated in the drawing are from unfinished surfaces, excluding plaster thickness and tile thickness.

UNIT PLAN - 02

3 BHK + 2 TOILETS



Key Plan



Block Plan

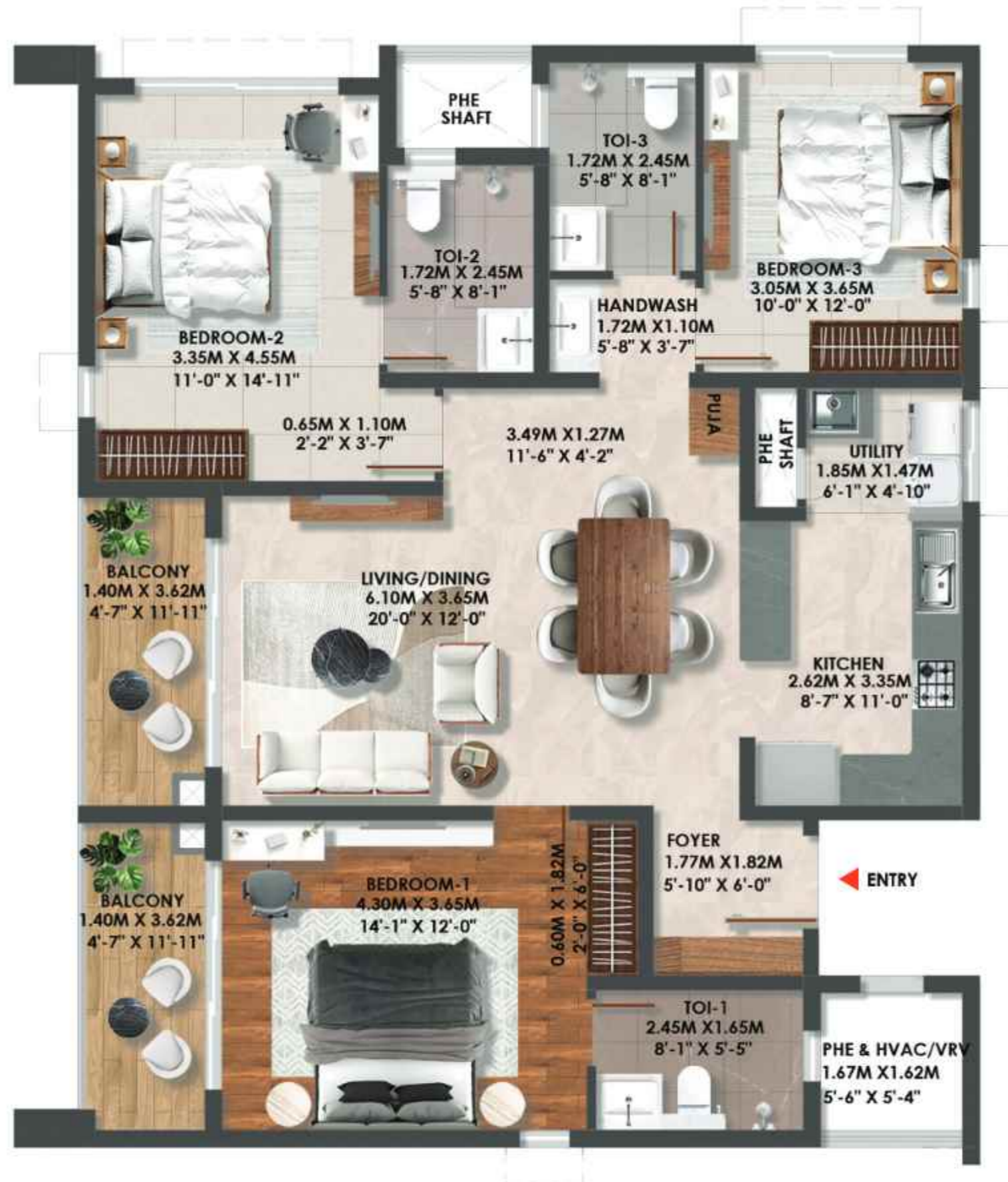


Super Built-up Area	1726 sq.ft.
Unit Carpet Area	1010 sq.ft.
Balcony + VRV Platform	91 sq.ft.

The information depicted herein viz., master plans, floor plans, furniture layout, fittings, illustrations, specifications, designs, dimensions, rendered views, colours, amenities and facilities etc., are subject to change without notifications as may be required by the relevant authorities or the Developer's architect, and cannot form part of an offer or contract. Whilst every care is taken in providing this information, the Developer cannot be held liable for variations. All illustrations and pictures are artist's impression only. The information is subject to variations, additions, deletions, substitutions and modifications as may be recommended by the company's architect and/or the relevant approving authorities. The Developer is wholly exempt from any liability on account of any claim in this regard. (1 square metre = 10.764 square feet). E & OE. All dimensions and calculations are done in metric system (M/Sq.m), and imperial system (Ft/Sq.ft) shown is for reference only. All dimensions indicated in the drawing are from unfinished surfaces, excluding plaster thickness and tile thickness.

UNIT PLAN - 03

3 BHK + 3 TOILETS



Key Plan



Block Plan

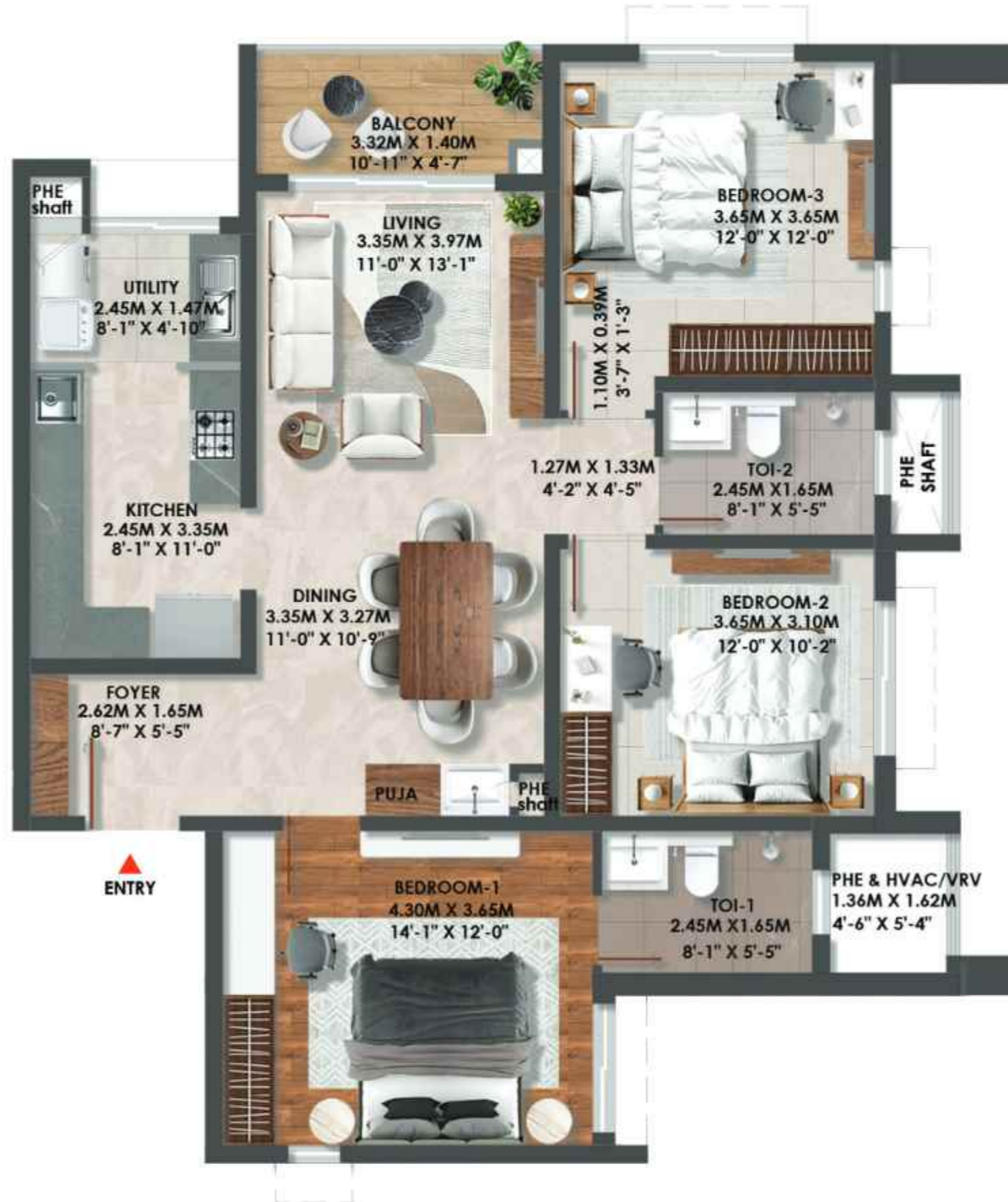


Super Built-up Area	1966 sq.ft.
Unit Carpet Area	1136 sq.ft.
Balcony + VRV Platform	131 sq.ft.

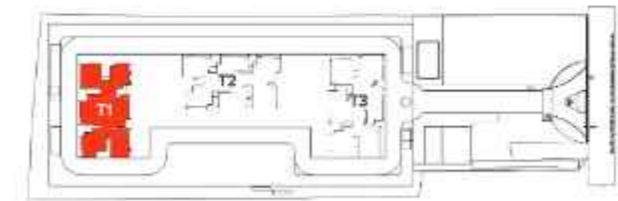
The information depicted herein viz., master plans, floor plans, furniture layout, fittings, illustrations, specifications, designs, dimensions, rendered views, colours, amenities and facilities etc., are subject to change without notifications as may be required by the relevant authorities or the Developer's architect, and cannot form part of an offer or contract. Whilst every care is taken in providing this information, the Developer cannot be held liable for variations. All illustrations and pictures are artist's impression only. The information is subject to variations, additions, deletions, substitutions and modifications as may be recommended by the company's architect and/or the relevant approving authorities. The Developer is wholly exempt from any liability on account of any claim in this regard. (1 square metre = 10.764 square feet). E & OE. All dimensions and calculations are done in metric system (M/Sq.m), and imperial system (Ft/Sq.ft) shown is for reference only. All dimensions indicated in the drawing are from unfinished surfaces, excluding plaster thickness and tile thickness.

UNIT PLAN - 04

3 BHK + 2 TOILETS



Key Plan



Block Plan



Super Built-up Area	1740 sq.ft.
Unit Carpet Area	1035 sq.ft.
Balcony + VRV Platform	74 sq.ft.

The information depicted herein viz., master plans, floor plans, furniture layout, fittings, illustrations, specifications, designs, dimensions, rendered views, colours, amenities and facilities etc., are subject to change without notifications as may be required by the relevant authorities or the Developer's architect, and cannot form part of an offer or contract. Whilst every care is taken in providing this information, the Developer cannot be held liable for variations. All illustrations and pictures are artist's impression only. The information is subject to variations, additions, deletions, substitutions and modifications as may be recommended by the company's architect and/or the relevant approving authorities. The Developer is wholly exempt from any liability on account of any claim in this regard. (1 square metre = 10.764 square feet). E & OE. All dimensions and calculations are done in metric system (M/Sq.m), and imperial system (Ft/Sq.ft) shown is for reference only. All dimensions indicated in the drawing are from unfinished surfaces, excluding plaster thickness and tile thickness.

UNIT PLAN - 05

3 BHK + 2 TOILETS



Key Plan



Block Plan



Super Built-up Area	1755 sq.ft.
Unit Carpet Area	1061 sq.ft.
Balcony + VRV Platform	65 sq.ft.

The information depicted herein viz., master plans, floor plans, furniture layout, fittings, illustrations, specifications, designs, dimensions, rendered views, colours, amenities and facilities etc., are subject to change without notifications as may be required by the relevant authorities or the Developer's architect, and cannot form part of an offer or contract. Whilst every care is taken in providing this information, the Developer cannot be held liable for variations. All illustrations and pictures are artist's impression only. The information is subject to variations, additions, deletions, substitutions and modifications as may be recommended by the company's architect and/or the relevant approving authorities. The Developer is wholly exempt from any liability on account of any claim in this regard. (1 square metre = 10.764 square feet). E & OE. All dimensions and calculations are done in metric system (M/Sq.m), and imperial system (Ft/Sq.ft) shown is for reference only. All dimensions indicated in the drawing are from unfinished surfaces, excluding plaster thickness and tile thickness.

UNIT PLAN - 06

3 BHK + 3 TOILETS + STUDY



Key Plan



Block Plan

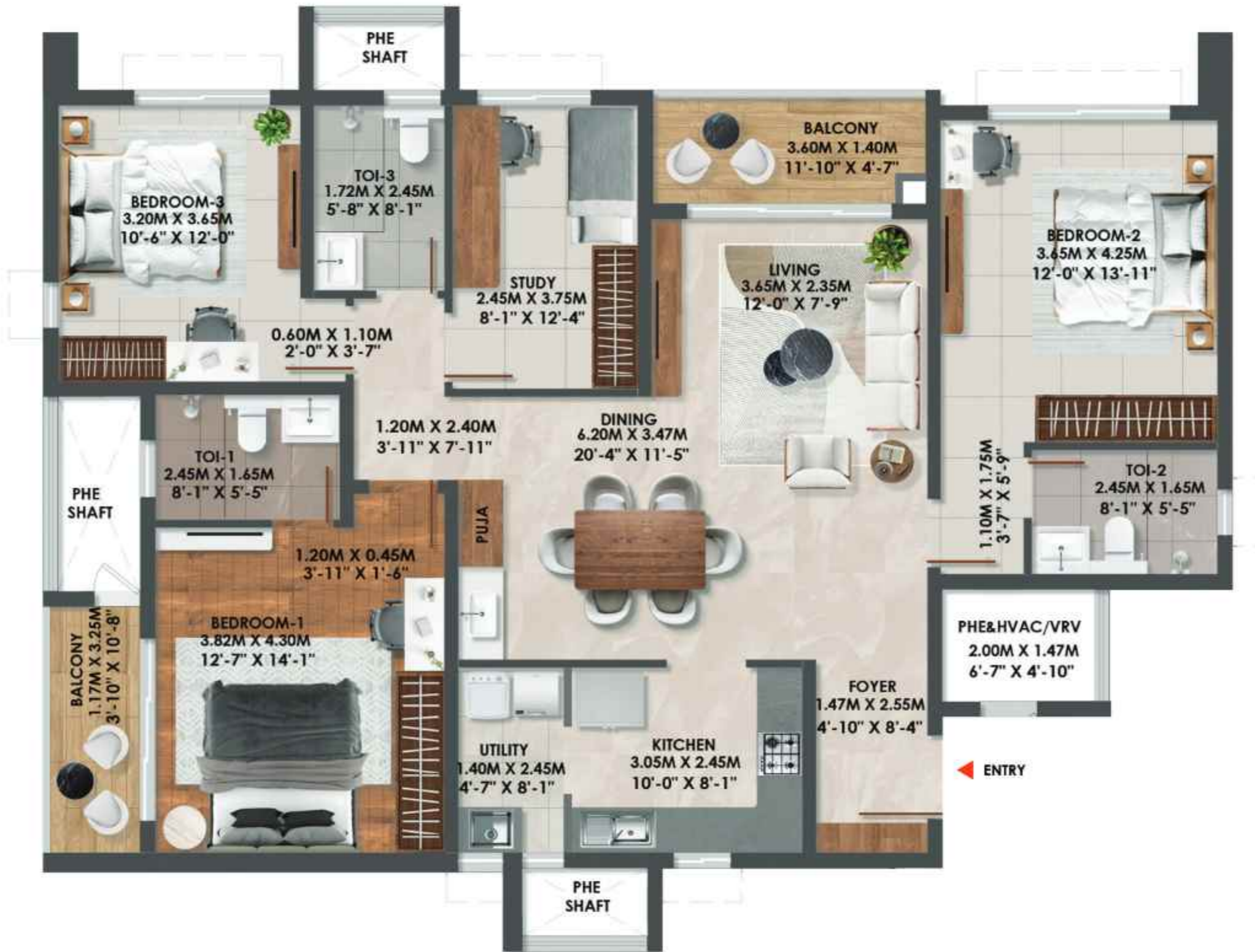


Super Built-up Area	2168 sq.ft.
Unit Carpet Area	1274 sq.ft.
Balcony + VRV Platform	119 sq.ft.

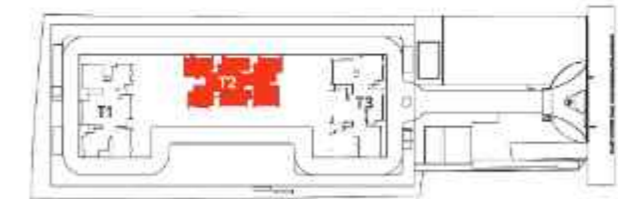
The information depicted herein viz., master plans, floor plans, furniture layout, fittings, illustrations, specifications, designs, dimensions, rendered views, colours, amenities and facilities etc., are subject to change without notifications as may be required by the relevant authorities or the Developer's architect, and cannot form part of an offer or contract. Whilst every care is taken in providing this information, the Developer cannot be held liable for variations. All illustrations and pictures are artist's impression only. The information is subject to variations, additions, deletions, substitutions and modifications as may be recommended by the company's architect and/or the relevant approving authorities. The Developer is wholly exempt from any liability on account of any claim in this regard. (1 square metre = 10.764 square feet). E & OE. All dimensions and calculations are done in metric system (M/Sq.m), and imperial system (Ft/Sq.ft) shown is for reference only. All dimensions indicated in the drawing are from unfinished surfaces, excluding plaster thickness and tile thickness.

UNIT PLAN - 07

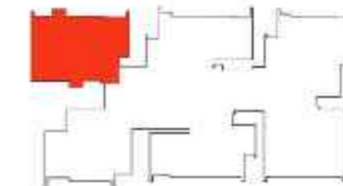
3 BHK + 3 TOILETS + STUDY



Key Plan



Block Plan



Super Built-up Area	2250 sq.ft.
Unit Carpet Area	1317 sq.ft.
Balcony + VRV Platform	125 sq.ft.

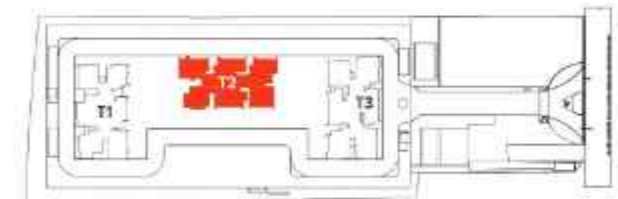
The information depicted herein viz., master plans, floor plans, furniture layout, fittings, illustrations, specifications, designs, dimensions, rendered views, colours, amenities and facilities etc., are subject to change without notifications as may be required by the relevant authorities or the Developer's architect, and cannot form part of an offer or contract. Whilst every care is taken in providing this information, the Developer cannot be held liable for variations. All illustrations and pictures are artist's impression only. The information is subject to variations, additions, deletions, substitutions and modifications as may be recommended by the company's architect and/or the relevant approving authorities. The Developer is wholly exempt from any liability on account of any claim in this regard. (1 square metre = 10.764 square feet). E & OE. All dimensions and calculations are done in metric system (M/Sq.m), and imperial system (Ft/Sq.ft) shown is for reference only. All dimensions indicated in the drawing are from unfinished surfaces, excluding plaster thickness and tile thickness.

UNIT PLAN - 08

3 BHK + 3 TOILETS



Key Plan



Block Plan

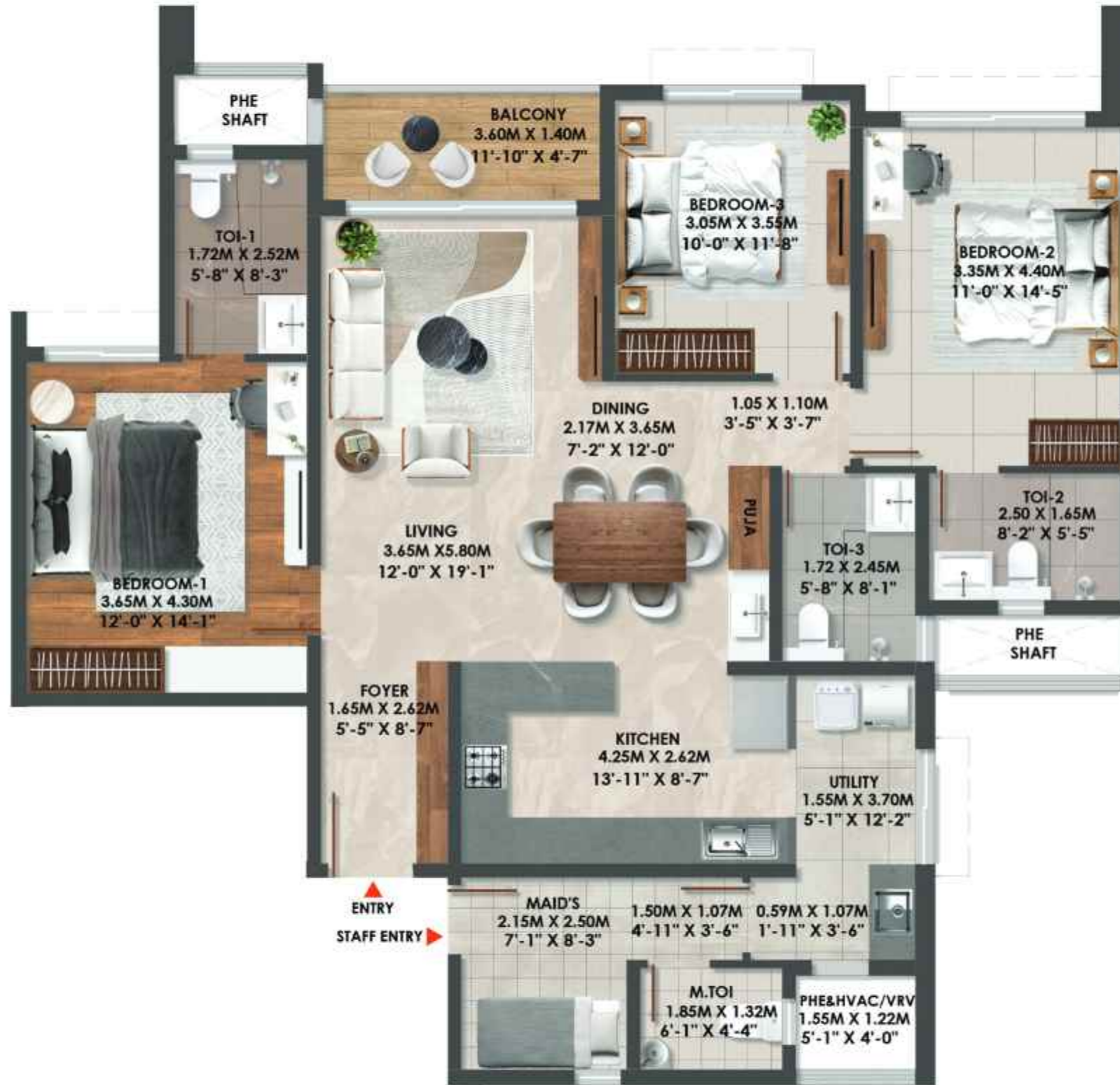


Super Built-up Area	1886 sq.ft.
Unit Carpet Area	1135 sq.ft.
Balcony + VRV Platform	66 sq.ft.

The information depicted herein viz., master plans, floor plans, furniture layout, fittings, illustrations, specifications, designs, dimensions, rendered views, colours, amenities and facilities etc., are subject to change without notifications as may be required by the relevant authorities or the Developer's architect, and cannot form part of an offer or contract. Whilst every care is taken in providing this information, the Developer cannot be held liable for variations. All illustrations and pictures are artist's impression only. The information is subject to variations, additions, deletions, substitutions and modifications as may be recommended by the company's architect and/or the relevant approving authorities. The Developer is wholly exempt from any liability on account of any claim in this regard. (1 square metre = 10.764 square feet). E & OE. All dimensions and calculations are done in metric system (M/Sq.m), and imperial system (Ft/Sq.ft) shown is for reference only. All dimensions indicated in the drawing are from unfinished surfaces, excluding plaster thickness and tile thickness.

UNIT PLAN - 09

3 BHK + 3 TOILETS + MAID'S ROOM



Key Plan



Block Plan

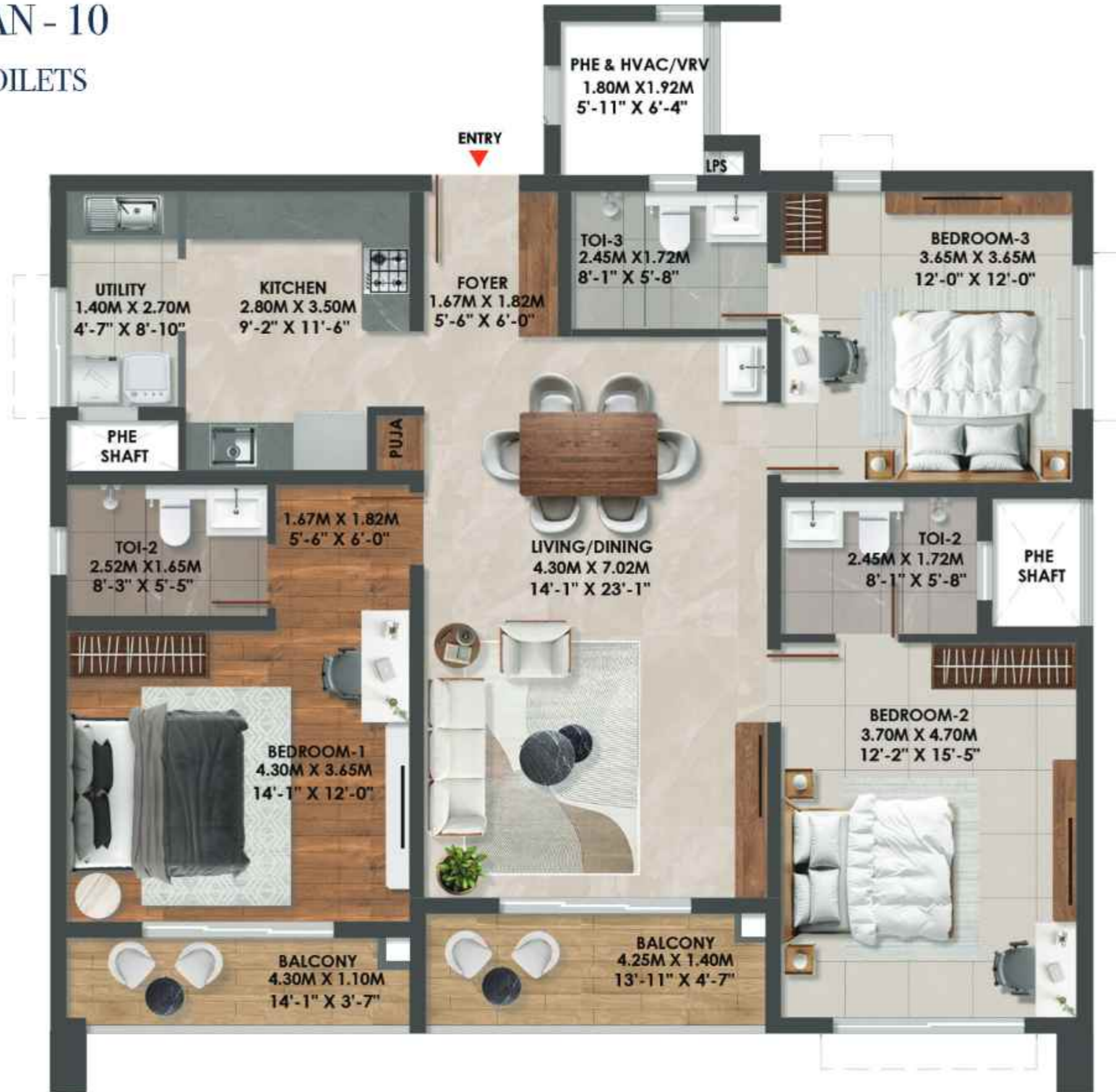


Super Built-up Area	2146 sq.ft.
Unit Carpet Area	1310 sq.ft.
Balcony + VRV Platform	75 sq.ft.

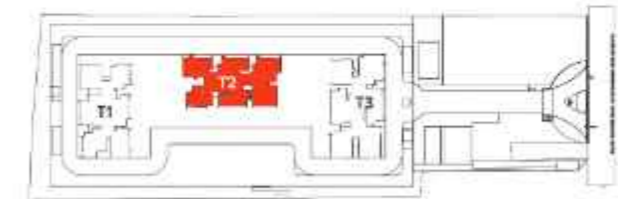
The information depicted herein viz., master plans, floor plans, furniture layout, fittings, illustrations, specifications, designs, dimensions, rendered views, colours, amenities and facilities etc., are subject to change without notifications as may be required by the relevant authorities or the Developer's architect, and cannot form part of an offer or contract. Whilst every care is taken in providing this information, the Developer cannot be held liable for variations. All illustrations and pictures are artist's impression only. The information is subject to variations, additions, deletions, substitutions and modifications as may be recommended by the company's architect and/or the relevant approving authorities. The Developer is wholly exempt from any liability on account of any claim in this regard. (1 square metre = 10.764 square feet). E & OE. All dimensions and calculations are done in metric system (M/Sq.m), and imperial system (Ft/Sq.ft) shown is for reference only. All dimensions indicated in the drawing are from unfinished surfaces, excluding plaster thickness and tile thickness.

UNIT PLAN - 10

3 BHK + 3 TOILETS



Key Plan



Block Plan



Super Built-up Area	2133 sq.ft.
Unit Carpet Area	1234 sq.ft.
Balcony + VRV Platform	129 sq.ft.

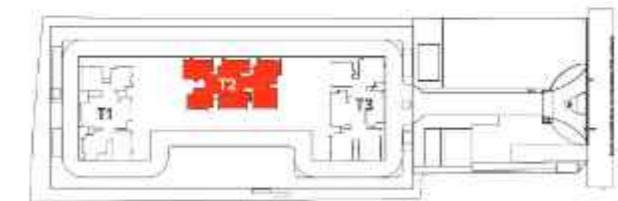
The information depicted herein viz., master plans, floor plans, furniture layout, fittings, illustrations, specifications, designs, dimensions, rendered views, colours, amenities and facilities etc., are subject to change without notifications as may be required by the relevant authorities or the Developer's architect, and cannot form part of an offer or contract. Whilst every care is taken in providing this information, the Developer cannot be held liable for variations. All illustrations and pictures are artist's impression only. The information is subject to variations, additions, deletions, substitutions and modifications as may be recommended by the company's architect and/or the relevant approving authorities. The Developer is wholly exempt from any liability on account of any claim in this regard. (1 square metre = 10.764 square feet). E & OE. All dimensions and calculations are done in metric system (M/Sq.m), and imperial system (Ft/Sq.ft) shown is for reference only. All dimensions indicated in the drawing are from unfinished surfaces, excluding plaster thickness and tile thickness.

UNIT PLAN - 11

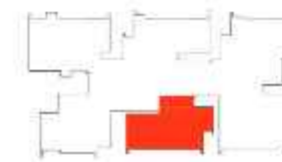
3 BHK + 3 TOILETS



Key Plan



Block Plan



Super Built-up Area	1857 sq.ft.
Unit Carpet Area	1126 sq.ft.
Balcony + VRV Platform	57 sq.ft.

The information depicted herein viz., master plans, floor plans, furniture layout, fittings, illustrations, specifications, designs, dimensions, rendered views, colours, amenities and facilities etc., are subject to change without notifications as may be required by the relevant authorities or the Developer's architect, and cannot form part of an offer or contract. Whilst every care is taken in providing this information, the Developer cannot be held liable for variations. All illustrations and pictures are artist's impression only. The information is subject to variations, additions, deletions, substitutions and modifications as may be recommended by the company's architect and/or the relevant approving authorities. The Developer is wholly exempt from any liability on account of any claim in this regard. (1 square metre = 10.764 square feet). E & OE. All dimensions and calculations are done in metric system (M/Sq.m), and imperial system (Ft/Sq.ft) shown is for reference only. All dimensions indicated in the drawing are from unfinished surfaces, excluding plaster thickness and tile thickness.

UNIT PLAN - 12

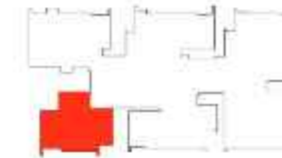
3 BHK + 3 TOILETS + MAID'S ROOM



Key Plan



Block Plan

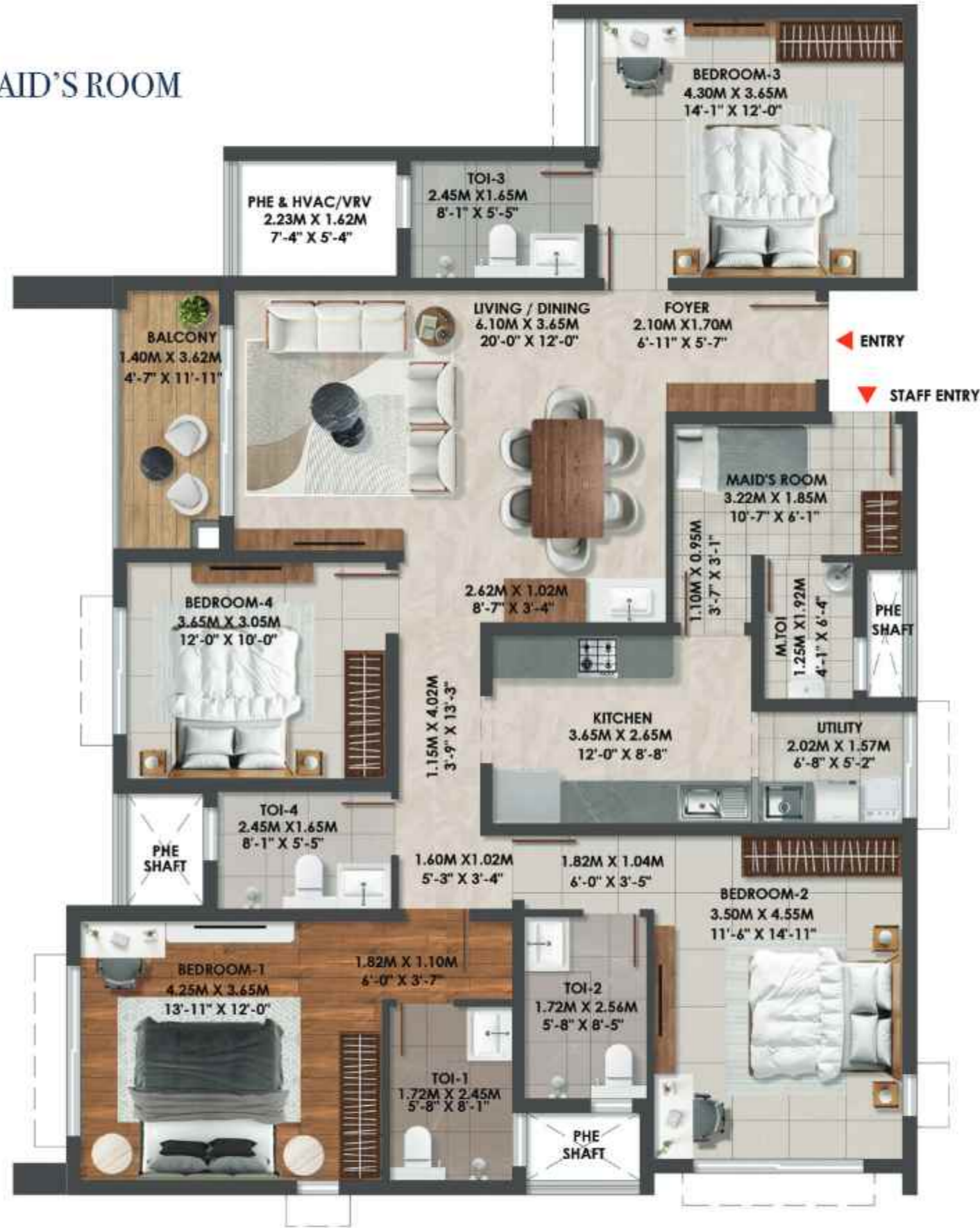


Super Built-up Area	2109 sq.ft.
Unit Carpet Area	1267 sq.ft.
Balcony + VRV Platform	88 sq.ft.

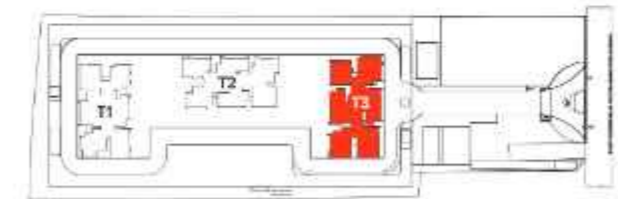
The information depicted herein viz., master plans, floor plans, furniture layout, fittings, illustrations, specifications, designs, dimensions, rendered views, colours, amenities and facilities etc., are subject to change without notifications as may be required by the relevant authorities or the Developer's architect, and cannot form part of an offer or contract. Whilst every care is taken in providing this information, the Developer cannot be held liable for variations. All illustrations and pictures are artist's impression only. The information is subject to variations, additions, deletions, substitutions and modifications as may be recommended by the company's architect and/or the relevant approving authorities. The Developer is wholly exempt from any liability on account of any claim in this regard. (1 square metre = 10.764 square feet). E & OE. All dimensions and calculations are done in metric system (M/Sq.m), and imperial system (Ft/Sq.ft) shown is for reference only. All dimensions indicated in the drawing are from unfinished surfaces, excluding plaster thickness and tile thickness.

UNIT PLAN - 13

4 BHK + 4 TOILETS + MAID'S ROOM



Key Plan



Block Plan



Super Built-up Area	2545 sq.ft.
Unit Carpet Area	1559 sq.ft.
Balcony + VRV Platform	88 sq.ft.

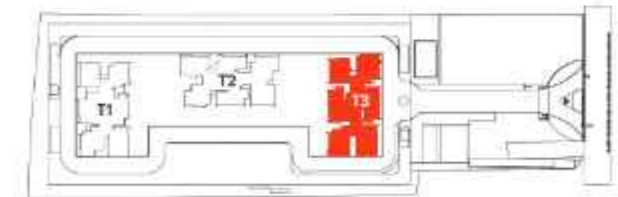
The information depicted herein viz., master plans, floor plans, furniture layout, fittings, illustrations, specifications, designs, dimensions, rendered views, colours, amenities and facilities etc., are subject to change without notifications as may be required by the relevant authorities or the Developer's architect, and cannot form part of an offer or contract. Whilst every care is taken in providing this information, the Developer cannot be held liable for variations. All illustrations and pictures are artist's impression only. The information is subject to variations, additions, deletions, substitutions and modifications as may be recommended by the company's architect and/or the relevant approving authorities. The Developer is wholly exempt from any liability on account of any claim in this regard. (1 square metre = 10.764 square feet). E & OE. All dimensions and calculations are done in metric system (M/Sq.m), and imperial system (Ft/Sq.ft) shown is for reference only. All dimensions indicated in the drawing are from unfinished surfaces, excluding plaster thickness and tile thickness.

UNIT PLAN - 14

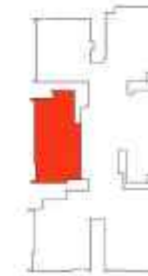
3 BHK + 3 TOILETS + STUDY



Key Plan



Block Plan

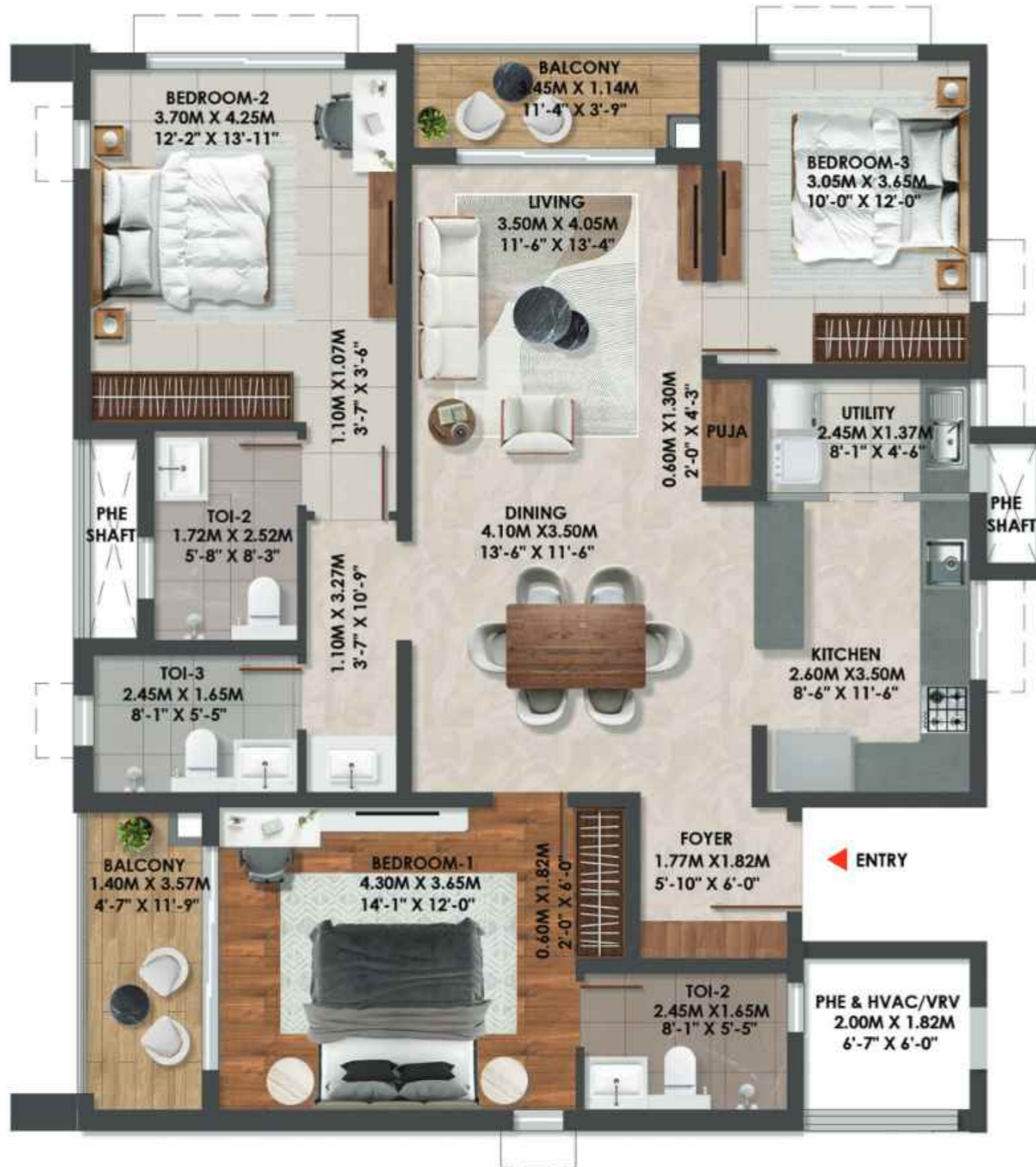


Super Built-up Area	2184 sq.ft.
Unit Carpet Area	1310 sq.ft.
Balcony + VRV Platform	98 sq.ft.

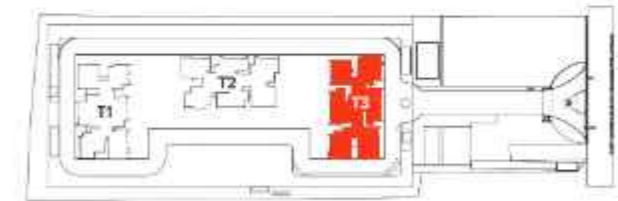
The information depicted herein viz., master plans, floor plans, furniture layout, fittings, illustrations, specifications, designs, dimensions, rendered views, colours, amenities and facilities etc., are subject to change without notifications as may be required by the relevant authorities or the Developer's architect, and cannot form part of an offer or contract. Whilst every care is taken in providing this information, the Developer cannot be held liable for variations. All illustrations and pictures are artist's impression only. The information is subject to variations, additions, deletions, substitutions and modifications as may be recommended by the company's architect and/or the relevant approving authorities. The Developer is wholly exempt from any liability on account of any claim in this regard. (1 square metre = 10.764 square feet). E & OE. All dimensions and calculations are done in metric system (M/Sq.m), and imperial system (Ft/Sq.ft) shown is for reference only. All dimensions indicated in the drawing are from unfinished surfaces, excluding plaster thickness and tile thickness.

UNIT PLAN - 15

3 BHK + 3 TOILETS



Key Plan



Block Plan

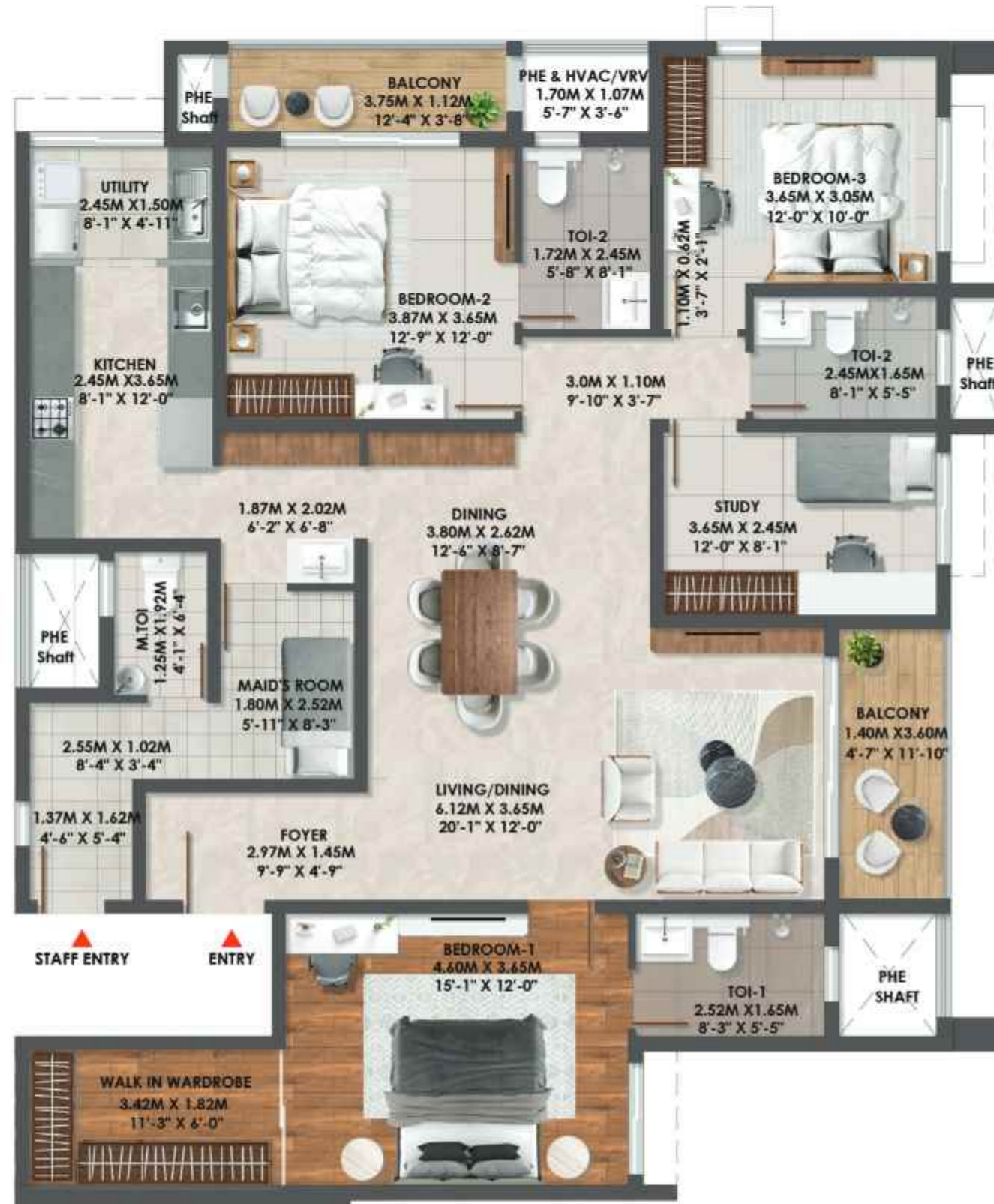


Super Built-up Area	2086 sq.ft.
Unit Carpet Area	1206 sq.ft.
Balcony + VRV Platform	132 sq.ft.

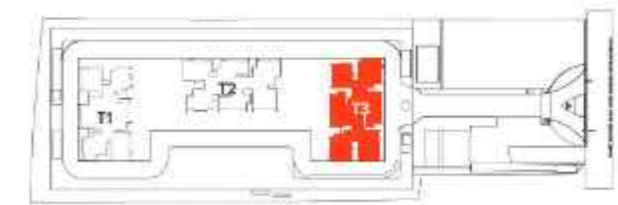
The information depicted herein viz., master plans, floor plans, furniture layout, fittings, illustrations, specifications, designs, dimensions, rendered views, colours, amenities and facilities etc., are subject to change without notifications as may be required by the relevant authorities or the Developer's architect, and cannot form part of an offer or contract. Whilst every care is taken in providing this information, the Developer cannot be held liable for variations. All illustrations and pictures are artist's impression only. The information is subject to variations, additions, deletions, substitutions and modifications as may be recommended by the company's architect and/or the relevant approving authorities. The Developer is wholly exempt from any liability on account of any claim in this regard. (1 square metre = 10.764 square feet). E & OE. All dimensions and calculations are done in metric system (M/Sq.m), and imperial system (Ft/Sq.ft) shown is for reference only. All dimensions indicated in the drawing are from unfinished surfaces, excluding plaster thickness and tile thickness.

UNIT PLAN - 16

3 BHK + 3 TOILETS + STUDY + MAID'S ROOM



Key Plan



Block Plan



Super Built-up Area	2630 sq.ft.
Unit Carpet Area	1589 sq.ft.
Balcony + VRV Platform	119 sq.ft.

The information depicted herein viz., master plans, floor plans, furniture layout, fittings, illustrations, specifications, designs, dimensions, rendered views, colours, amenities and facilities etc., are subject to change without notifications as may be required by the relevant authorities or the Developer's architect, and cannot form part of an offer or contract. Whilst every care is taken in providing this information, the Developer cannot be held liable for variations. All illustrations and pictures are artist's impression only. The information is subject to variations, additions, deletions, substitutions and modifications as may be recommended by the company's architect and/or the relevant approving authorities. The Developer is wholly exempt from any liability on account of any claim in this regard. (1 square metre = 10.764 square feet). E & OE. All dimensions and calculations are done in metric system (M/Sq.m), and imperial system (Ft/Sq.ft) shown is for reference only. All dimensions indicated in the drawing are from unfinished surfaces, excluding plaster thickness and tile thickness.

UNIT PLAN - 16

4 BHK + 4 TOILETS + STUDY + MAID'S ROOM + FAMILY

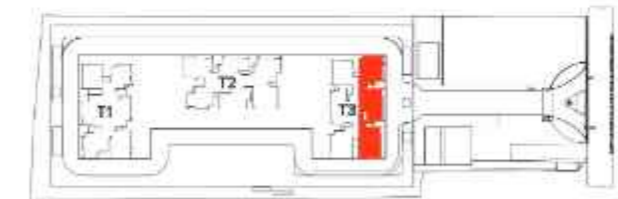


DUPLEX LEVEL 1



DUPLEX LEVEL 2

Key Plan



Block Plan



Super Built-up Area	5054 sq.ft.
Unit Carpet Area	3027 sq.ft.
Balcony + VRV Platform	238 sq.ft.

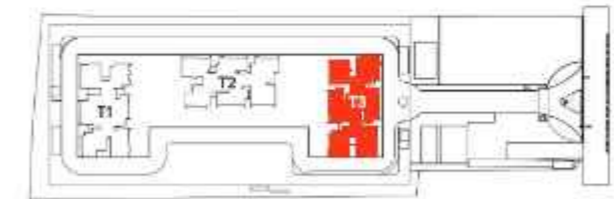
The information depicted herein viz., master plans, floor plans, furniture layout, fittings, illustrations, specifications, designs, dimensions, rendered views, colours, amenities and facilities etc., are subject to change without notifications as may be required by the relevant authorities or the Developer's architect, and cannot form part of an offer or contract. Whilst every care is taken in providing this information, the Developer cannot be held liable for variations. All illustrations and pictures are artist's impression only. The information is subject to variations, additions, deletions, substitutions and modifications as may be recommended by the company's architect and/or the relevant approving authorities. The Developer is wholly exempt from any liability on account of any claim in this regard. (1 square metre = 10.764 square feet). E & OE. All dimensions and calculations are done in metric system (M/Sq.m), and imperial system (Ft/Sq.ft) shown is for reference only. All dimensions indicated in the drawing are from unfinished surfaces, excluding plaster thickness and tile thickness.

UNIT PLAN - 17

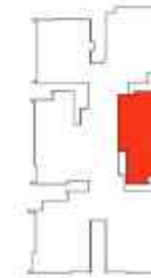
3 BHK + 3 TOILETS + STUDY



Key Plan



Block Plan



Super Built-up Area	2208 sq.ft.
Unit Carpet Area	1347 sq.ft.
Balcony + VRV Platform	78 sq.ft.

The information depicted herein viz., master plans, floor plans, furniture layout, fittings, illustrations, specifications, dimensions, rendered views, colours, amenities and facilities etc., are subject to change without notifications as may be required by the relevant authorities or the Developer's architect, and cannot form part of an offer or contract. Whilst every care is taken in providing this information, the Developer cannot be held liable for variations. All illustrations and pictures are artist's impression only. The information is subject to variations, additions, deletions, substitutions and modifications as may be recommended by the company's architect and/or the relevant approving authorities. The Developer is wholly exempt from any liability on account of any claim in this regard. (1 square metre = 10.764 square feet). E & OE. All dimensions and calculations are done in metric system (M/Sq.m), and imperial system (Ft/Sq.ft) shown is for reference only. All dimensions indicated in the drawing are from unfinished surfaces, excluding plaster thickness and tile thickness.

UNIT PLAN - 17

DUPLEX - 4 BHK + 4 TOILETS + STUDY + POWDER ROOM + FAMILY

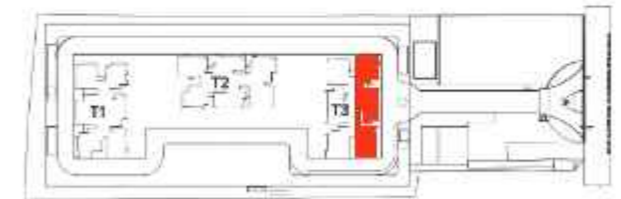


DUPLEX LEVEL 1

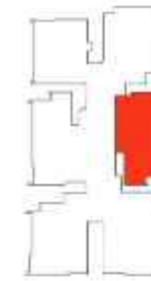


DUPLEX LEVEL 2

Key Plan



Block Plan



Super Built-up Area	4064 sq.ft.
Unit Carpet Area	2415 sq.ft.
Balcony + VRV Platform	157 sq.ft.

The information depicted herein viz., master plans, floor plans, furniture layout, fittings, illustrations, specifications, designs, dimensions, rendered views, colours, amenities and facilities etc., are subject to change without notifications as may be required by the relevant authorities or the Developer's architect, and cannot form part of an offer or contract. Whilst every care is taken in providing this information, the Developer cannot be held liable for variations. All illustrations and pictures are artist's impression only. The information is subject to variations, additions, deletions, substitutions and modifications as may be recommended by the company's architect and/or the relevant approving authorities. The Developer is wholly exempt from any liability on account of any claim in this regard. (1 square metre = 10.764 square feet). E & OE. All dimensions and calculations are done in metric system (M/Sq.m), and imperial system (Ft/Sq.ft) shown is for reference only. All dimensions indicated in the drawing are from unfinished surfaces, excluding plaster thickness and tile thickness.

UNIT PLAN - 18

DUPLEX - 4 BHK + 5 TOILETS + MAID'S ROOM + FAMILY

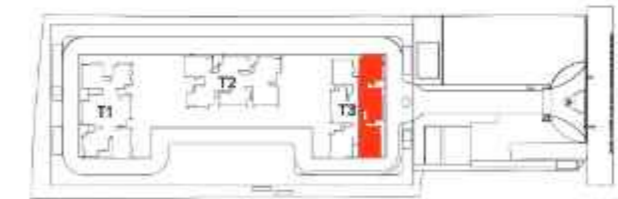


DUPLEX LEVEL 1



DUPLEX LEVEL 2

Key Plan



Block Plan



Super Built-up Area	4404 sq.ft.
Unit Carpet Area	2654 sq.ft.
Balcony + VRV Platform	210 sq.ft.

The information depicted herein viz., master plans, floor plans, furniture layout, fittings, illustrations, specifications, designs, dimensions, rendered views, colours, amenities and facilities etc., are subject to change without notifications as may be required by the relevant authorities or the Developer's architect, and cannot form part of an offer or contract. Whilst every care is taken in providing this information, the Developer cannot be held liable for variations. All illustrations and pictures are artist's impression only. The information is subject to variations, additions, deletions, substitutions and modifications as may be recommended by the company's architect and/or the relevant approving authorities. The Developer is wholly exempt from any liability on account of any claim in this regard. (1 square metre = 10.764 square feet). E & OE. All dimensions and calculations are done in metric system (M/Sq.m), and imperial system (Ft/Sq.ft) shown is for reference only. All dimensions indicated in the drawing are from unfinished surfaces, excluding plaster thickness and tile thickness.

SPECIFICATIONS

COMMON AREA

Waiting Lounge/Reception/GF Lobby:

Granite/Vitrified Tiles Flooring

Lift Lobby and Corridors: Vitrified Tiles

UNITS:

Living/Dining/Family/Foyer/Kitchen: Engineered Marble

Master Bedroom: Wood Finish Vitrified Tiles
(200mm x 1200mm)

Other Bedrooms: Vitrified Tiles large size (800mm x 800mm)

Balcony/Deck: Anti-skid Ceramic Tiles/

Wooden Finish Vitrified Tiles

Master Bedroom/

Other Toilets: Vitrified Tiles (600mm x 600mm)

Kitchen: Engineered Marble

Servants Room and Toilet: Ceramic Tiles

WALL DADO

Kitchen: Provision for Modular Kitchen
(no Granite Slab/no Dado will be provided)

Other toilets: Vitrified Tiles (600mm x 600mm) cladding
up to false ceiling

KITCHEN UTILITY

Counter: Provision for Modular Kitchen

(no Counter will be provided)

Plumbing/Electrical: Provision for Water Purifier/Sink,
Washing Machine and Dishwasher

TOILETS:

CP Fittings: Kohler/Grohe/Toto or equivalent

Sanitary Fixtures - EWC & Washbasin: All mounted white
EWC (Kohler/Duravit-Toto/equivalent)

DOORS:

Main Door Frame: Hard Wood Frame with
Veneer Flush Shutter

Bedroom Door Frame: Hard Wood Frame with
Veneer Flush Shutter

Toilet Door Frame: Hard Wood Frame with
Laminate Flush Shutter

WINDOWS AND VENTILATORS

UPVC/Anodised Aluminium with bug screen and Safety
Grill/Invisible Grill for windows only

PAINTING & FINISHES

Exterior Finish: Combination of Exterior Texture paint with
Exterior Grade Emulsion

Internal Ceilings: Oil Bound Distemper

Unit Walls: Acrylic Emulsion Paint

AIR CONDITIONING

Living: VRV-Ductable Splits

Master Bedroom: VRV-Ductable Splits

Other Bedrooms: VRV-Ductable Splits

ELECTRICAL

4BHK/Duplex (4BHK) & above: 9.5 Kw

**3 BHK+3T/3BHK+2T/3BHK+Study/
3BHK+Maid's Room:** 8.3 Kw

Modular Switches: Anchor Roma Plus/
Panasonic Vision/equivalent

DG BACKUP

100% DG back up for common area and units

VERTICAL TRANSPORTATION

Lifts provided as per design



Our core values



Founders



To **UPGRADE TO BRIGADE**, reach us on **1800 102 9977** • BrigadeAltius.com

Site Marketing Office
Brigade Altius
No. 295,
Rajiv Gandhi Salai (OMR)
Sholinganallur, Chennai - 600119

Registered & Corporate Office
29th & 30th Floor, WTC Bangalore,
Brigade Gateway Campus,
Dr. Rajkumar Road,
Malleswaram-Rajajinagar, Bengaluru

Dubai Office
902. Nassima Tower,
Sheikh Zayed Rd.
Ph: +971 4355 5504
dubaisales@brigadegroup.com

Singapore Office
Suite: 612, Level 6,
Republic Plaza,
Raffles Place
salesenquiry@brigadegroup.com

Offices also at: BENGALURU • HYDERABAD • MYSURU

