

Redefining *Peaceful* living


Kalash
SERENITY

At Pushpak Nagar, Dapoli, Navi Mumbai.



Creating *Value* Constructing *Success*

ABOUT SATPANTH CREATION

Satpanth Creation is a premier construction company dedicated to transforming urban landscapes with innovative and sustainable architectural designs.

With a strong commitment to quality and excellence, We specialize in creating residential and commercial spaces that blend modern aesthetics with functional elegance. Our projects are strategically located, offering residents and businesses a perfect balance of convenience and tranquility.

With a focus on customer satisfaction, Satpanth Creation ensures timely delivery and adherence to the highest standards, making them a trusted name in the real estate industry

VISION

Mounting ahead with our deeply rooted values of integrity and exceptional quality, we envision creating happy communities in delightful living spaces

MISSION

To escalate and extend our towering presence onto greater heights with our innovative life structures, is our leap into the future.

GOAL

To go above and beyond our clients' expectations by consistently providing exceptional service, personalized attention, and expert advice.



Where *Happiness* begins
and memories last *Forever!*



Discover a harmonious blend of luxury, comfort, and nature at Kalash Serenity. Nestled in a serene environment, our premium residences offer world-class amenities, spacious interiors, and breathtaking views. Experience modern living with smart home features, lush green landscapes, and seamless connectivity to key destinations. Your perfect home awaits—crafted for a lifetime of happiness!

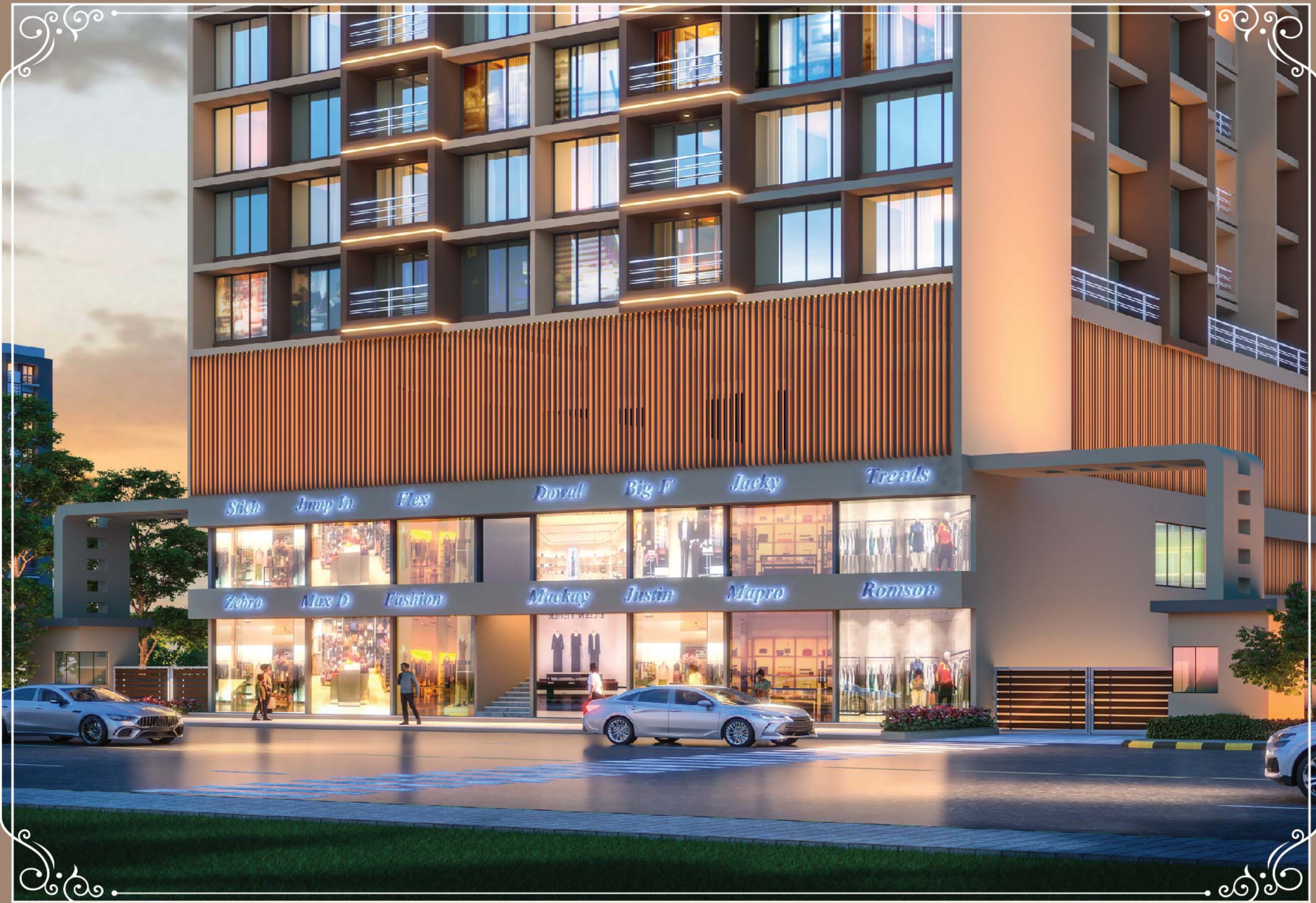


A world you *Imagine*
A life you *Desire*

PROJECT HIGHLIGHTS

- | Stilt + 14 Storied Tower
- | Situated at Prime Location
- | Luxurious 2 & 3 BHK residences
- | Mesmerizing Nature Views
- | Modern & Attractive Elevation
- | Ample Car Parking on 2nd to 3rd Floor
- | Landscape Podium Garden
- | Power backup for lifts and common areas
- | 24 x 7 Advance security and surveillance system





Kalash
SERENITY

Experience the *Best* of both worlds home and *Shopping*

Kalash Serenity offers a great commercial and shopping zone, perfect for businesses and shoppers alike. With modern facilities and a prime location, it's designed to attract plenty of visitors. It's the ideal space for both shopping and business opportunities.



Adequate Parking



Commercial Zone



Entrance Gate



Security Cabin





your *Perfect* home
enhanced with *Premium* amenities



LIVING & DINING

- » Vitrified flooring in Master Bedroom



KITCHEN

- » Vitrified flooring
- » Granite kitchen platform with S.S. sink
- » Color glazed tiles of dado above platform
- » Provision for water purifier



BEDROOM

- » Vitrified flooring in master and common bedrooms
- » AC point in master bedroom



DOORS

- » Main door and bedroom door with decorative laminate sheets and wooden frame
- » FRP door for toilet and bathroom



TOILET

- » Designer tiles on dado up to beam bottom
- » Anti-skid ceramic tiles flooring
- » Concealed plumbing with branded fittings
- » Provision for geyser



WINDOWS

- » Aluminium powder-coated sliding windows in all rooms and kitchen with tinted glass



ELECTRICAL

- » Concealed copper wiring with reputed brand modular switches



PAINTING

- » Acrylic paint on internal walls
- » 100% acrylic paint on external walls



ENTRANCE

- » Elegant Entrance Lobby



LIFT

- » Automation Lift of reputed make



Step into a new level of *Luxury*
An entrance that defines *Prestige*



GRAND ENTRANCE LOBBY

Step into a grand entrance lobby that exudes elegance and sophistication. With soaring ceilings, luxurious finishes, and thoughtfully curated decor, this space offers a warm yet impressive welcome. Soft lighting highlights the intricate details, while plush seating invites guests to relax in style. It's more than an entryway; it's the first step into a world of refined luxury.



Family time *Redefind*
with podium-level *Amenities*

Kalash
SERENITY



Swimming Pool



Fitness Centre



Kid's Play Area



Reading Zone



Space for Yoga



Senior Citizen Area



Indoor Games



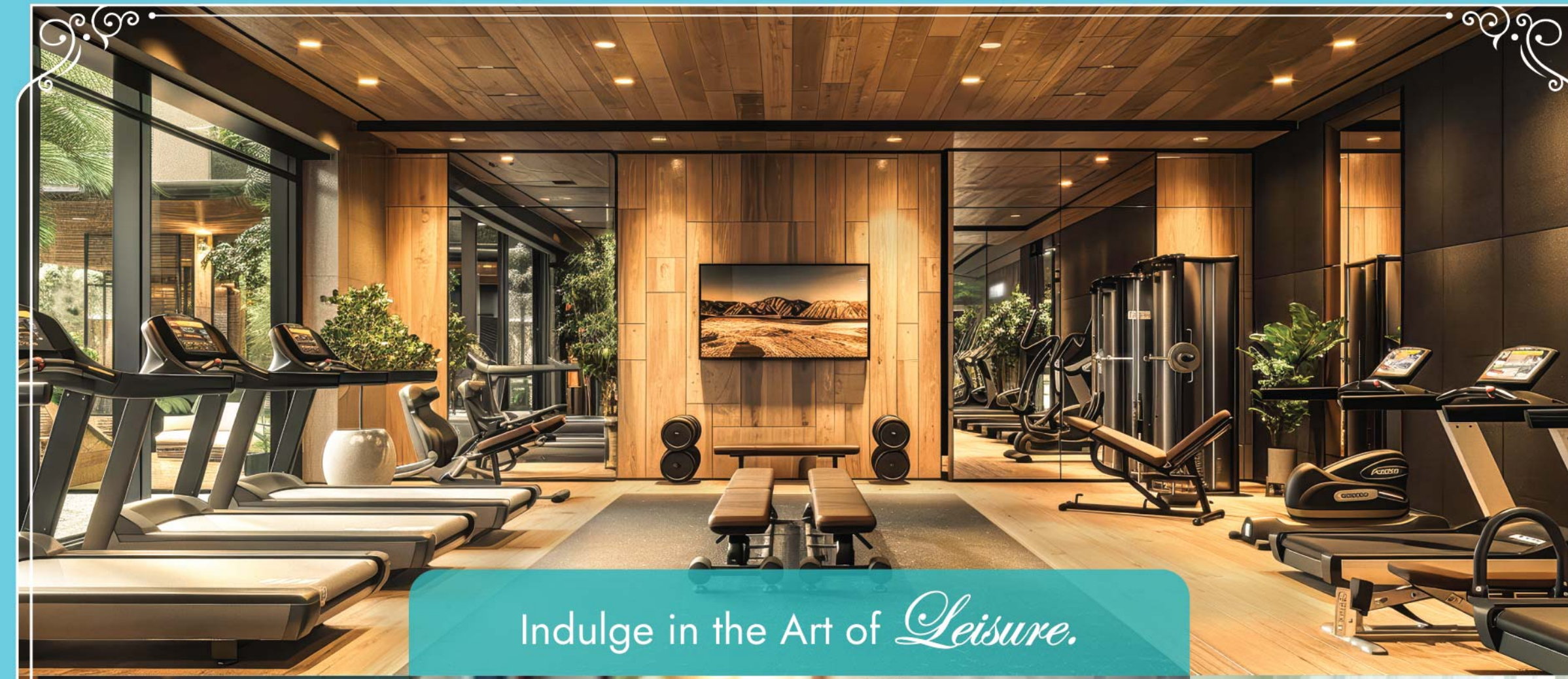
Society Office



Jogging Track



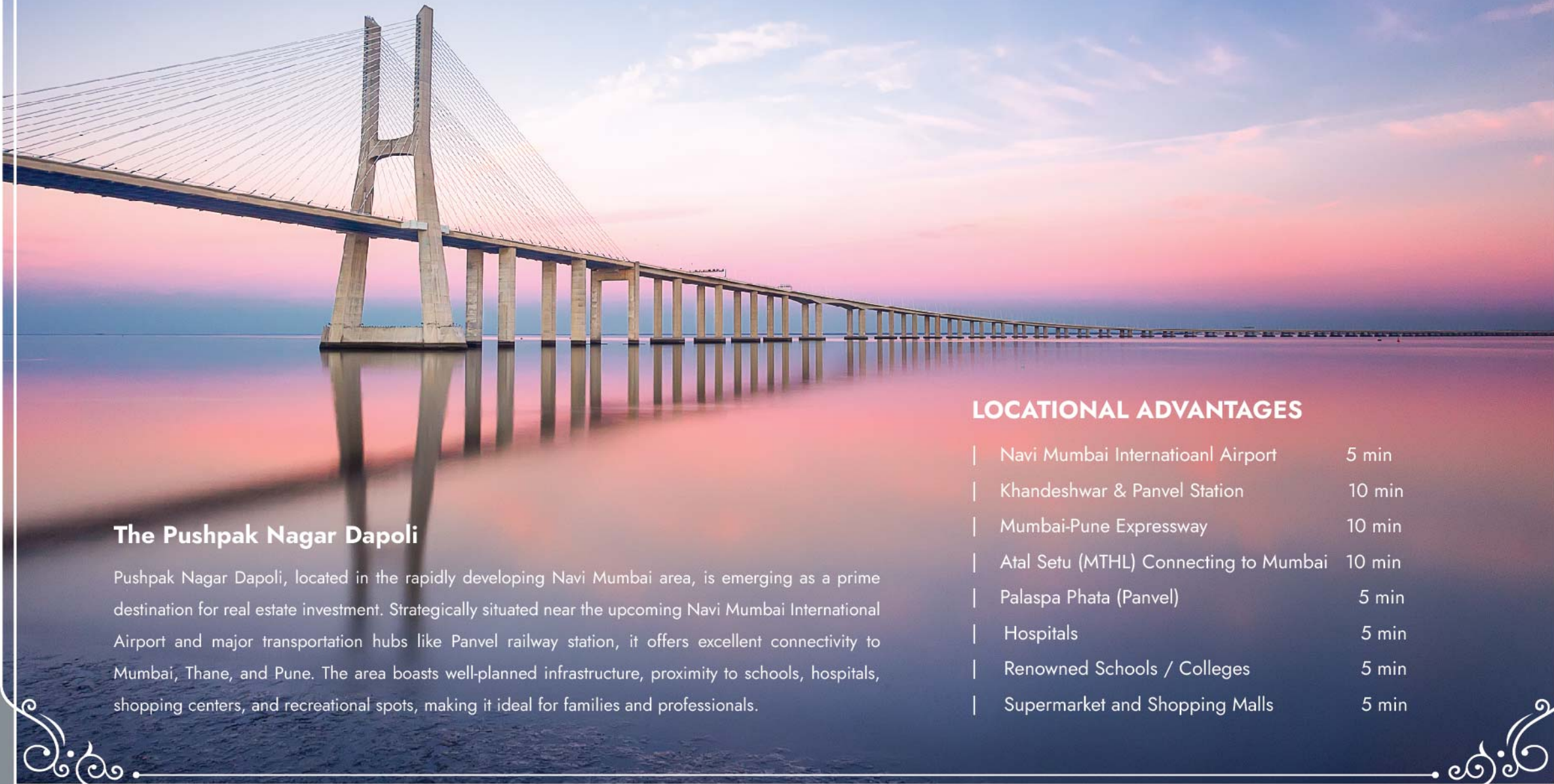
Kalash
SERENITY



Indulge in the Art of *Leisure.*



beyond just a *Destination*
a nexus of *Connection*



The Pushpak Nagar Dapoli

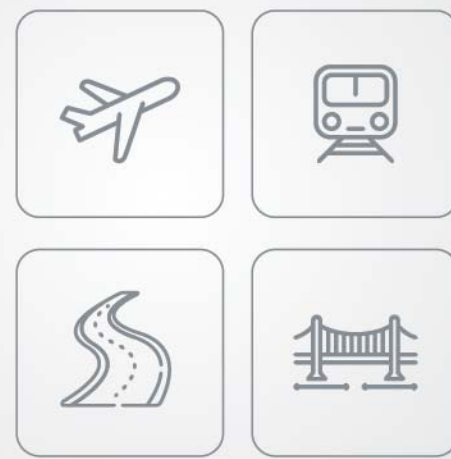
Pushpak Nagar Dapoli, located in the rapidly developing Navi Mumbai area, is emerging as a prime destination for real estate investment. Strategically situated near the upcoming Navi Mumbai International Airport and major transportation hubs like Panvel railway station, it offers excellent connectivity to Mumbai, Thane, and Pune. The area boasts well-planned infrastructure, proximity to schools, hospitals, shopping centers, and recreational spots, making it ideal for families and professionals.

LOCATIONAL ADVANTAGES

- | Navi Mumbai Internatioanl Airport 5 min
- | Khandeshwar & Panvel Station 10 min
- | Mumbai-Pune Expressway 10 min
- | Atal Setu (MTHL) Connecting to Mumbai 10 min
- | Palaspa Phata (Panvel) 5 min
- | Hospitals 5 min
- | Renowned Schools / Colleges 5 min
- | Supermarket and Shopping Malls 5 min



Site: Plot No. 26, Sector-7 Pushpak Nagar, Dapoli, Navi Mumbai.



SCAN FOR GOOGLE MAP

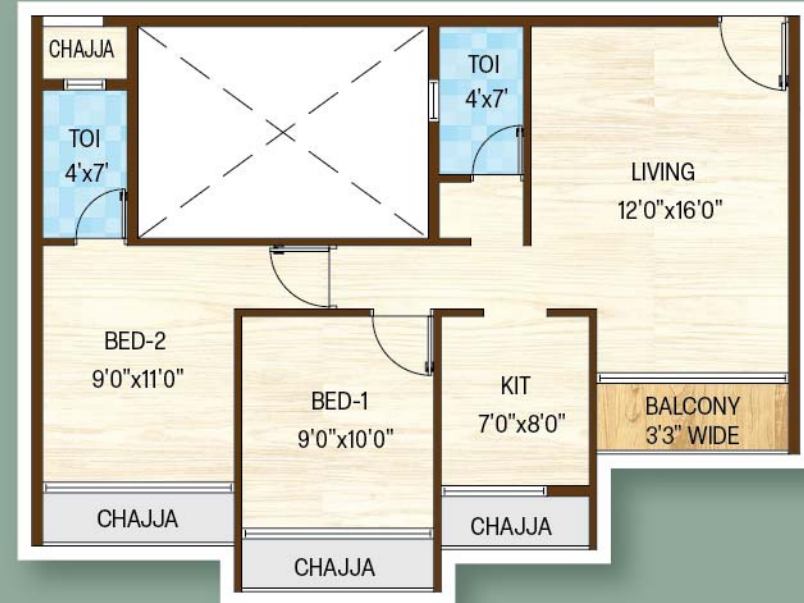


SITE LOCATION MAP

LEGEND :

- Greenland / Garden
- Schools
- Playground
- Fire Station
- Fuel Station
- Future Development
- Police Station
- Market Parking

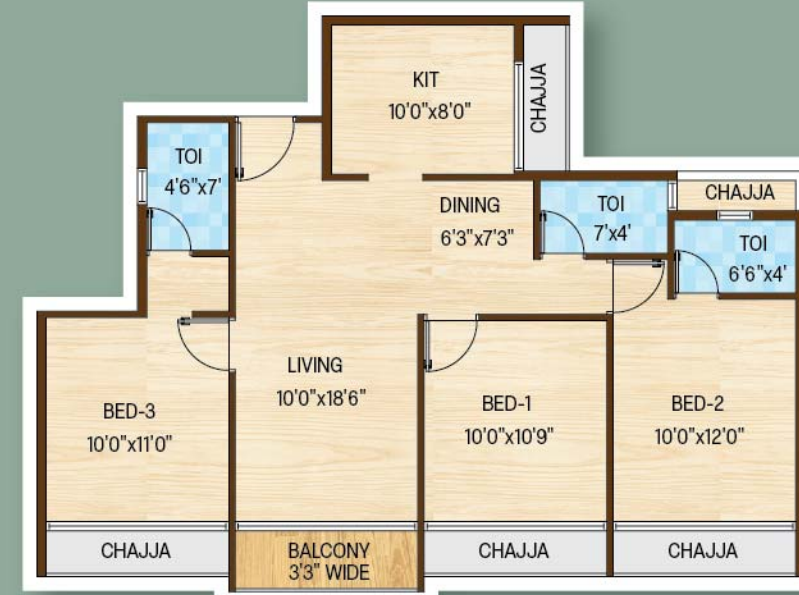




2 BHK FLAT - 2D VIEW



2 BHK FLAT - 3D VIEW



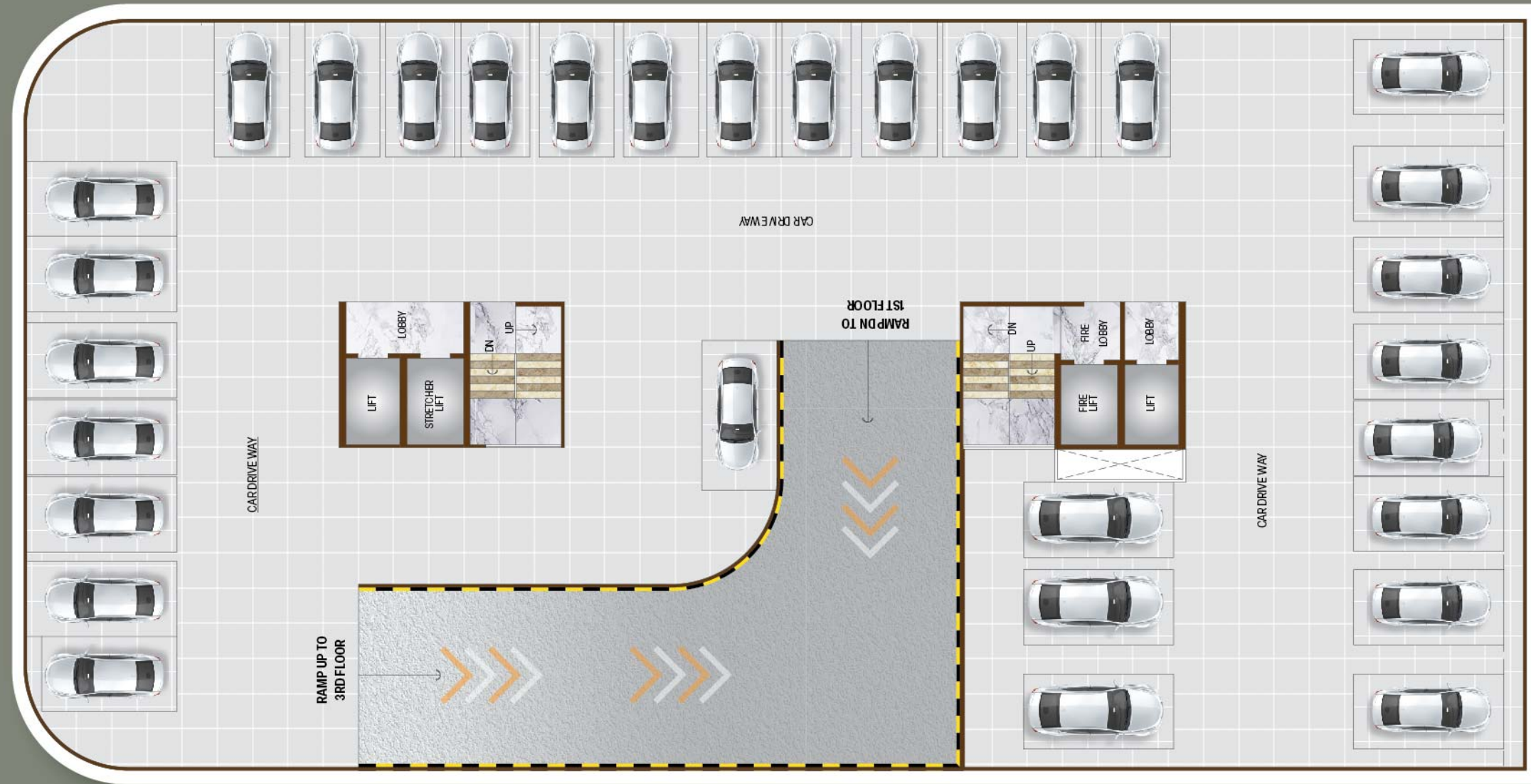
3 BHK FLAT - 2D VIEW



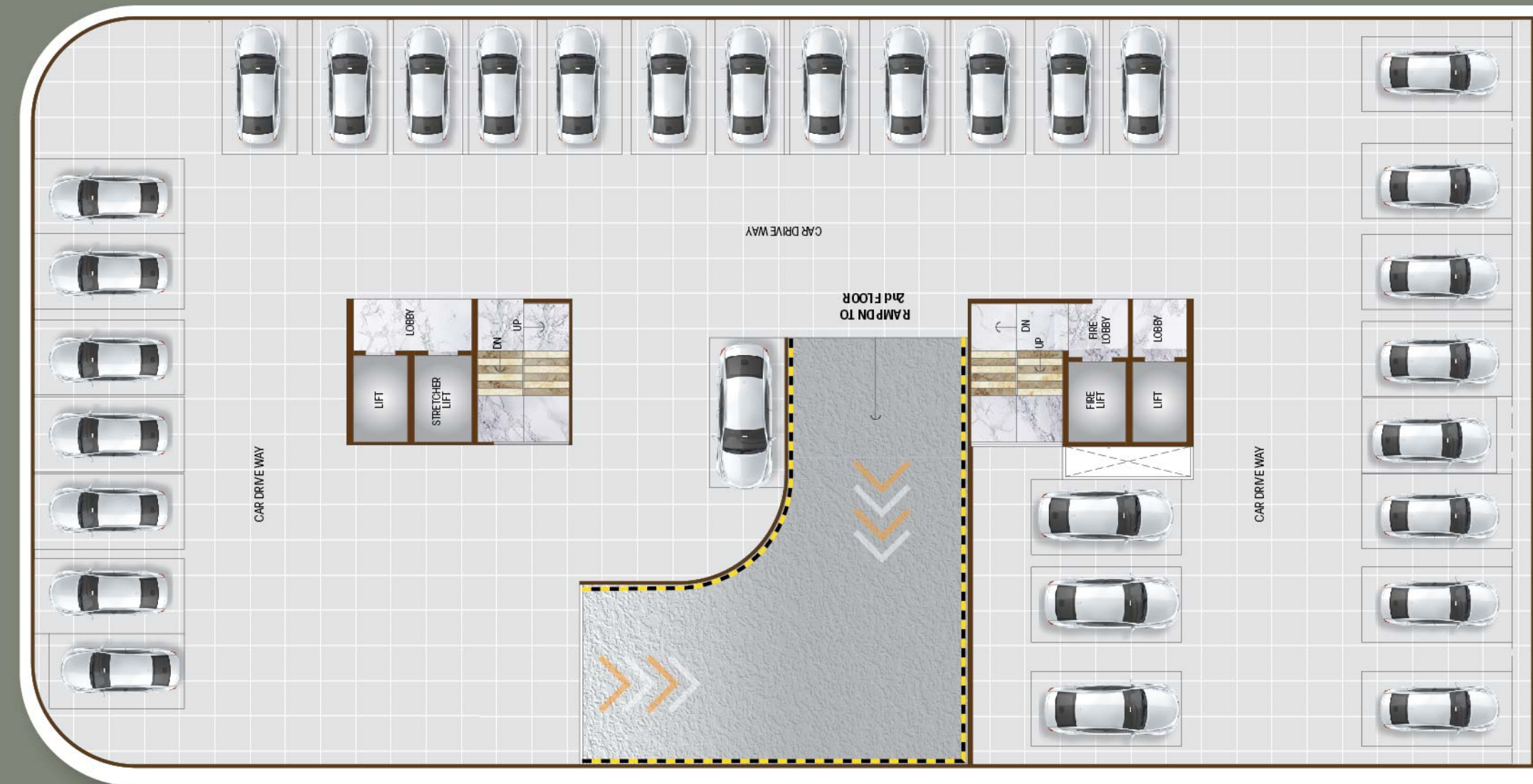
3 BHK FLAT - 3D VIEW







2ND FLOOR PLAN



3RD FLOOR PLAN



4TH FLOOR PLAN



5TH, 6TH, 7TH, 9TH, 10TH, & 11TH FLOOR PLAN

TYPICAL FLOOR PLAN

Kalash
SERENITY



Kalash
SERENITY

8TH FLOOR PLAN



Kalash
SERENITY

12TH FLOOR PLAN



Kalash
SERENITY

13TH FLOOR PLAN



Kalash
GREENS
YEAR 2023

SHREEPATI
Kalash
YEAR 2024

OUR
ONGOING
PROJECTS

TULSI
Kalash
CITY
YEAR 2024

Kalash
SERENITY
YEAR 2025

OUR COMPLETED PROJECTS

Basil
TOWER
YEAR 2008

Atharva
RESIDENCY
YEAR 2011

Meghna
SHIVAM
YEAR 2012

Kalash
YEAR 2012

Kalash
HOMES
YEAR 2013

Kalash
HILLS
YEAR 2019

OM NAMAH
SHIVAY
Kalash
YEAR 2014

Kalash
RESIDENCY
YEAR 2012

KD
Kalash
YEAR 2013

MEGHNA
Kalash
YEAR 2020



PROJECT BY:



SATPANTH
CREATION

Site/Office : "KALASH SERENITY" Plot No. 26, Sector-7,
Pushpak Nagar, Dapoli, Navi Mumbai - 410 221

Contact us :
+91 8070 0800 80

 SCAN ME



SITE LOCATION MAP

 MAHA RERA



RERA : PM1270002501424



MAHA RERA
WEBSITE

<https://maharera.maharashtra.gov.in>

Architect: Atul Patel Architects | RCC Consultant:- S.V. Patel & Associates

Disclaimer: All art renderings, illustrations, photographs and pictures contained in this advertisement are an artist's impression only and the same should not be construed to be the final image / view of the final project. Since the project is under evolution there is a possibility that there may be certain changes in the project as represented in this advertisement. Every interested purchaser should take note of this express representation. kindly visit our website for the complete disclaimer. *T&C Apply.