



RERA No: P02400007647

AMBHUJA

BY MAYTRI

Transforming Living

SANGHI CITY



Experience the epitome of modern urban living with **Sanghi City**, a visionary development poised to redefine the landscape of Hyderabad. Strategically located facing ORR Spot on Exit 11, Pedda Amberpet, Sanghi Smart City combines architectural ingenuity with sustainable development. Our community lifestyle fosters connectivity and convenience, making commute easier for every family. As pioneers in building a smart city in Hyderabad, we are committed to creating a vibrant, forward-thinking environment where residents can thrive. Welcome to **Sanghi City** – where innovation meets lifestyle, and the future unfolds before your eyes.



Reap
the
Advantage
of Booming
ORR
Corridor
at
EXIT-11

ADVANTAGE MAYTRI

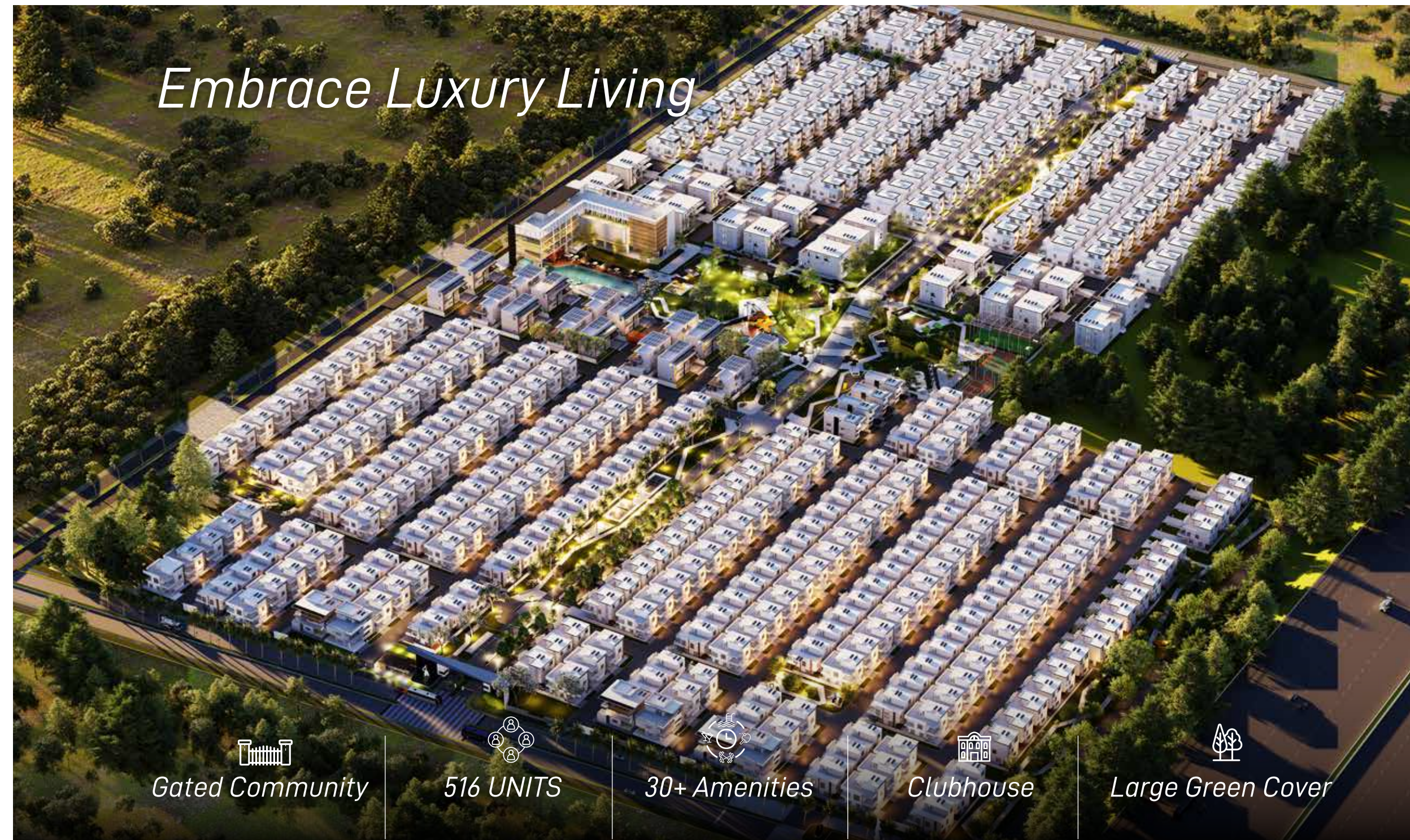
Maytri Constructions is one of the leading real estate developers in Hyderabad with a decade of experience in establishing long term relationships based on trust, transparency and professionalism. The consistent presence of the company at the top in the industry is built on a foundation of expertise, innovation, quality of service and range of facilities that it provides to its customers.

Maytri Constructions has presence in plotted, flats and villa properties in rapidly growing localities and prestigious neighbourhoods, ensuring that each investment opportunity meets its stringent criteria for excellence at reasonable prices. With a keen understanding of evolving lifestyles, the architects of **Maytri Constructions** have meticulously planned each property to offer a blend of style, comfort and functionality, ensuring that every aspect caters to the needs and preferences of the homeowners. **Maytri Constructions** stands out for its consistent dependability, exceptional quality and attention to detail offering a variety of contemporary amenities curated for modern lifestyle. For **Maytri Constructions**, quality isn't just a goal, it is an assurance that every customer receives nothing but the best.

"Your Dream is Our Aim"

Embrace the beauty of life within these walls, where every corner holds a story and every detail is crafted with care. Experience the embrace of a home that's more than just a place to live "it's a place to thrive."

EMBRACE




Gated Community


516 UNITS


30+ Amenities


Clubhouse


Large Green Cover

MAYTRI

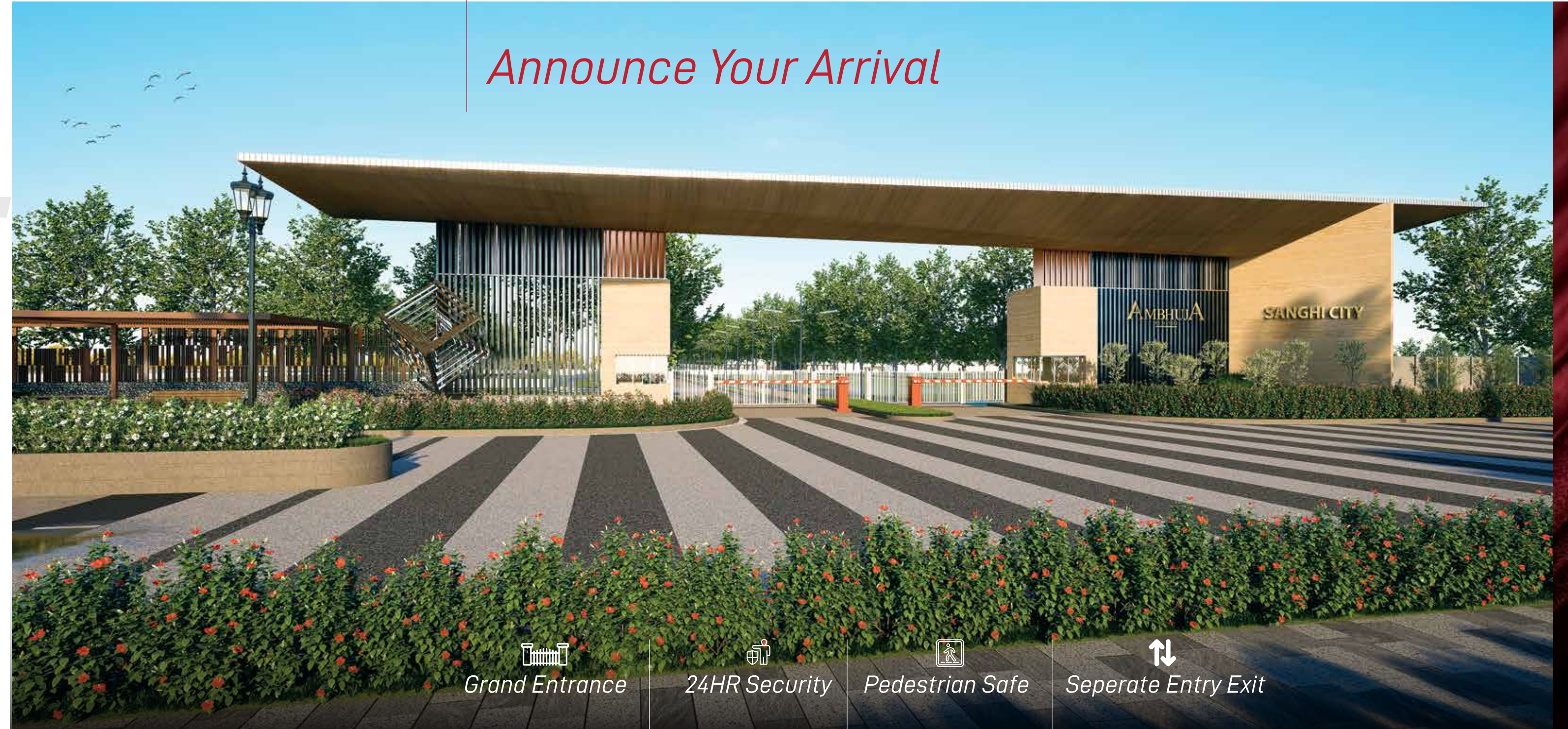
SANGHI CITY

"ARRIVE" at your dream destination in luxury living. Discover a world where every doorstep opens to possibility, every window frames a stunning view, and every room welcomes you home.

ARRIVE IN STYLE • FUTURE HAS ARRIVED



Announce Your Arrival




Grand Entrance


24HR Security


Pedestrian Safe


Seperate Entry Exit

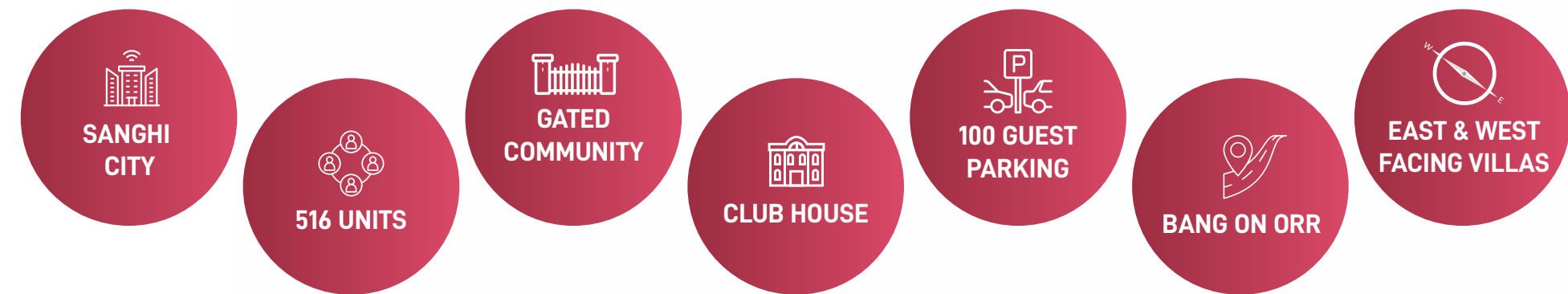
With our exquisite amenities and unparalleled attention to detail, every moment is an opportunity to pamper yourself. From lush outdoor spaces to relaxing spa retreats, indulge in the finest comforts and experiences.

EXPERIENCE

BE PREPARED TO GET SURPRISED



Experience Elevated Living



Project Highlights:

- Sanghi City • 4 Acres of Green landscape • Community of 516 units*
- *Unit types 222, 300, 444, 600, 800*
 - *Visitor parking for 100 cars*
 - *Proximity to educational Institutes*
 - *Bus bays*
 - *Sustainable and eco-friendly*
 - *Rain Water Harvesting*
 - *Solar panels*



INDULGE

"INDULGE" in a world of unparalleled luxury with our exclusive amenities. From lavish spas to state-of-the-art fitness centers, every aspect of your living experience has been meticulously designed for indulgence.

INDULGE WITH LUXURY



Indulgence Is Inevitable



CLUBHOUSE

- Spread in 90,000
- Grand Lobby
- Banquet Hall
- Indoor Games
- Guest Suites

MAYTRI

SANGHI CITY

OLYMPIC SIZE
POOL



BADMINTON
COURTS



GYMNASIUM



SPA SALON



GUEST ROOMS



NEIGHBOURHOOD
PARKS



CHILDREN
PLAYGROUND

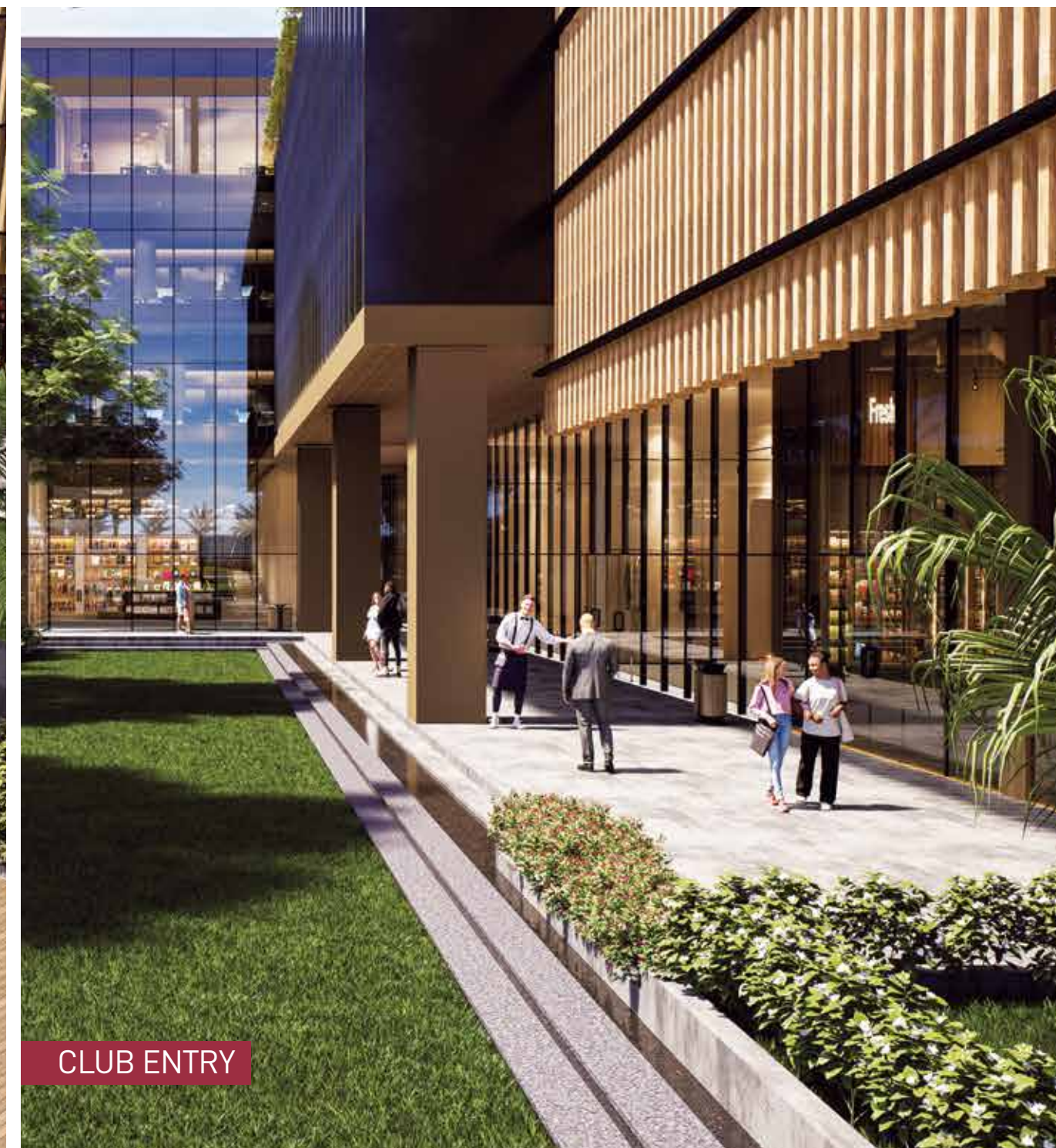


TODDLER PARKS





SWIMMING POOL



CLUB ENTRY



AMPHITHEATRE



CRICKET PITCH



PARK VIEW



SKATING RINK



PARK VIEW



Luxury Comes in Various Sizes

AMBHUJA
BY MAYTRI

222 SQ.YDS

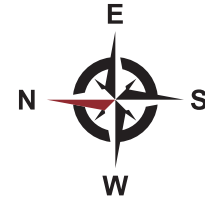
300 SQ.YDS

444 SQ.YDS

600 SQ.YDS

800 SQ.YDS

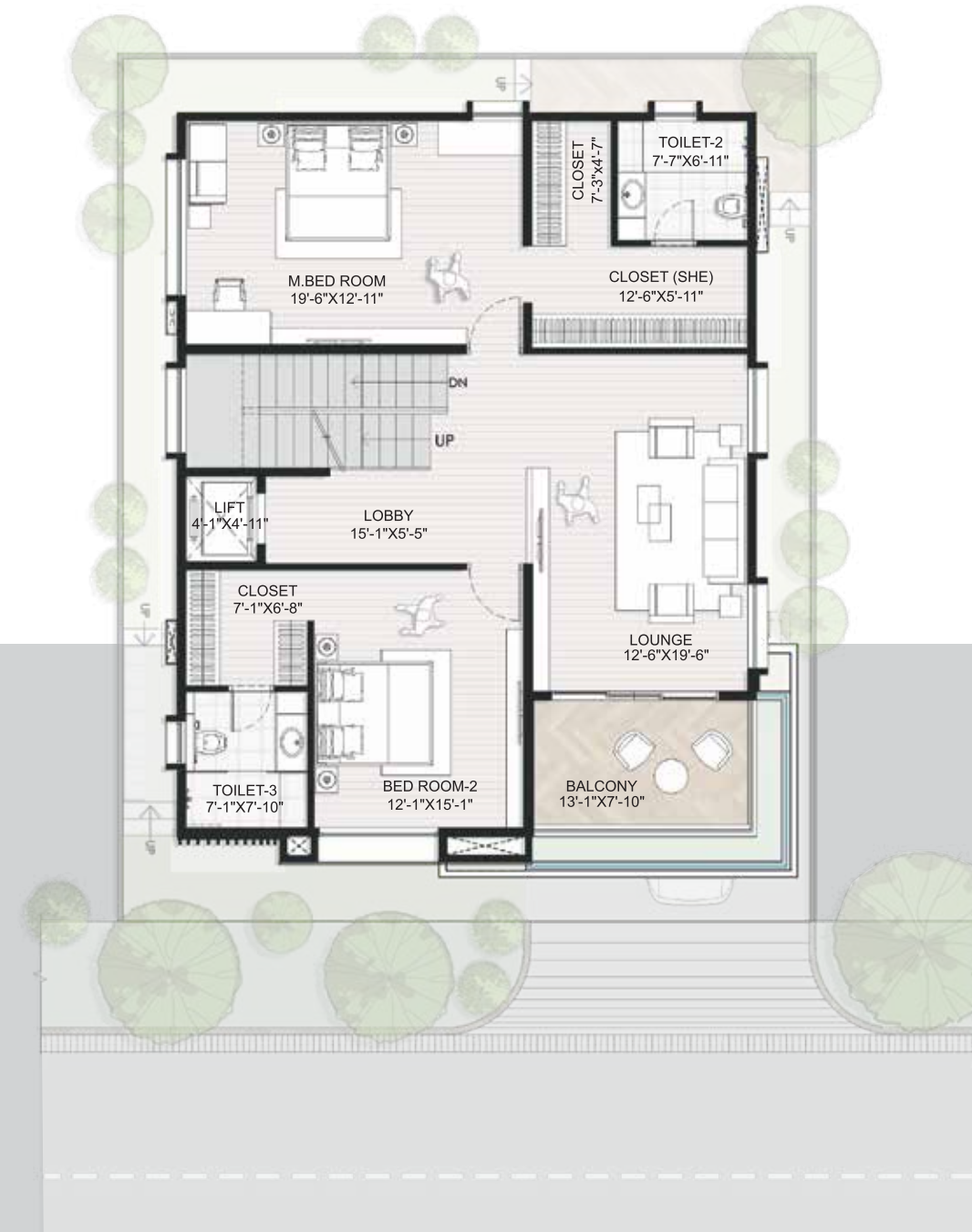
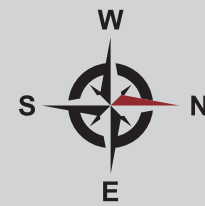
MASTER PLAN & FLOOR PLANS



222 SQ.YDS EAST FACING



GROUND FLOOR



FIRST FLOOR



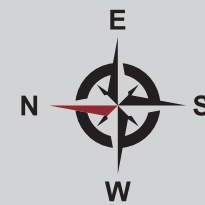
SECOND FLOOR

FLOOR	BUA(SFT)
GROUND FLOOR	1397
FIRST FLOOR	1397
SECOND FLOOR	561
TOTAL	3355

222 SQ.YDS
WEST FACING



FLOOR	BUA(SFT)
GROUND FLOOR	1397
FIRST FLOOR	1397
SECOND FLOOR	623
TOTAL	3417



300 SQ.YDS
EAST FACING



GROUND FLOOR

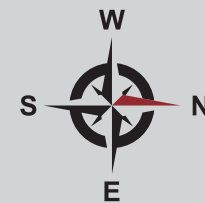


FIRST FLOOR



SECOND FLOOR

FLOOR	BUA(SFT)
GROUND FLOOR	1700
FIRST FLOOR	1602
SECOND FLOOR	756
TOTAL	4654



300 SQ.YDS
WEST FACING



GROUND FLOOR



FIRST FLOOR



SECOND FLOOR

FLOOR	BUA(SFT)
GROUND FLOOR	1696
FIRST FLOOR	1593
SECOND FLOOR	765
TOTAL	4054



SPECIFICATIONS

STRUCTURE | WALL AND SURFACE FINISHES | FACADE

| FLOORING | DOORS & WINDOWS | KITCHEN |

BATHROOMS & POWDER ROOM | TERRACE | WATER

PROOFING | ELECTRICAL | TELECOM/CABLE/INTERNET

| SECURITY | BACK-UP FOR POWER



• STRUCTURE

R.C.C. framed structure with shear wall technology to withstand wind, seismic loads and earthquakes
Reinforced external walls (shear wall) Reinforced internal walls (shear wall)/block work



• WALL AND SURFACE FINISHES

Two coats of wall putty (wall care) for external and internal walls up to smooth finish



• PAINTING

External: Weather shield paint of reputed make
Internal: Premium acrylic emulsion paint over smooth finished putty



• FACADE

MCM (Metal Composite Material) & WPC cladding for the Facade
Glass Railings and MS Railings for the sit-outs and balconies



• FLOORING

Drawing, Living & Dining: Imported Marble Bed Rooms: Vitrified Tiles
Bath rooms/Powder Room: Anti-skid Ceramic tiles
Terrace/Balcony/Sit-outs: Anti-skid Ceramic Tiles Internal
Staircase: Leatherette finish Granite or Marble
Utility & Servant quarters: Rustic vitrified/anti-skid ceramic tiles



• DOORS & WINDOWS

Main Doors: Teak wood frame with melamine polish
Shutter: Designer Flush shutter with veneer on both sides with polish. **Internal Doors:** Hard/Engineered wood Frame with polish.
Shutter: Hard/Engineered wood or Flush shutter with Veneer/Laminate. **Windows:** UPVC French doors and sliding windows with mosquito mesh



• KITCHEN

Counter top with granite or engineered marble of reputed make. Provision for water purifier, exhaust and chimney & other appliances.
Dado: 2 feet Ceramic tiles of reputed make above kitchen platform



• BATHROOMS & POWDER ROOM

CP & Sanitary fittings of reputed make Provision for geysers
Dado: Glazed Ceramic tiles up to lintel height



• TERRACE

Provision for solar power Provision for Washing Machine



• WATER PROOFING

Waterproofing in toilets, balconies and terrace

ANTI-TERMITE treatment for pest control



• ELECTRICAL

Concealed copper wiring of reputed make Power outlets for AC's in living and bedrooms
Power Outlets for cooking range, chimney, refrigerator, microwave oven, mixer/grinder in the kitchen, Dishwasher & Washing Machine in the utility area MCB for distribution board of reputed make Modular electrical switches of reputed make



• TELECOM/CABLE/INTERNET

Intercom connectivity to villas and security cabin
Provision for cable connection in all bedrooms and living areas
Fiber-to-home connection



• SECURITY

Round the clock security
Solar fencing on compound wall
Smart boom barriers at the entry gate with access control for residents only for enhanced security measures.
Strategically placed CCTV cameras which provide comprehensive coverage of all the community areas along with centralized monitoring and backup storage system.



• BACK-UP FOR POWER

100% Diesel Generator power back-up

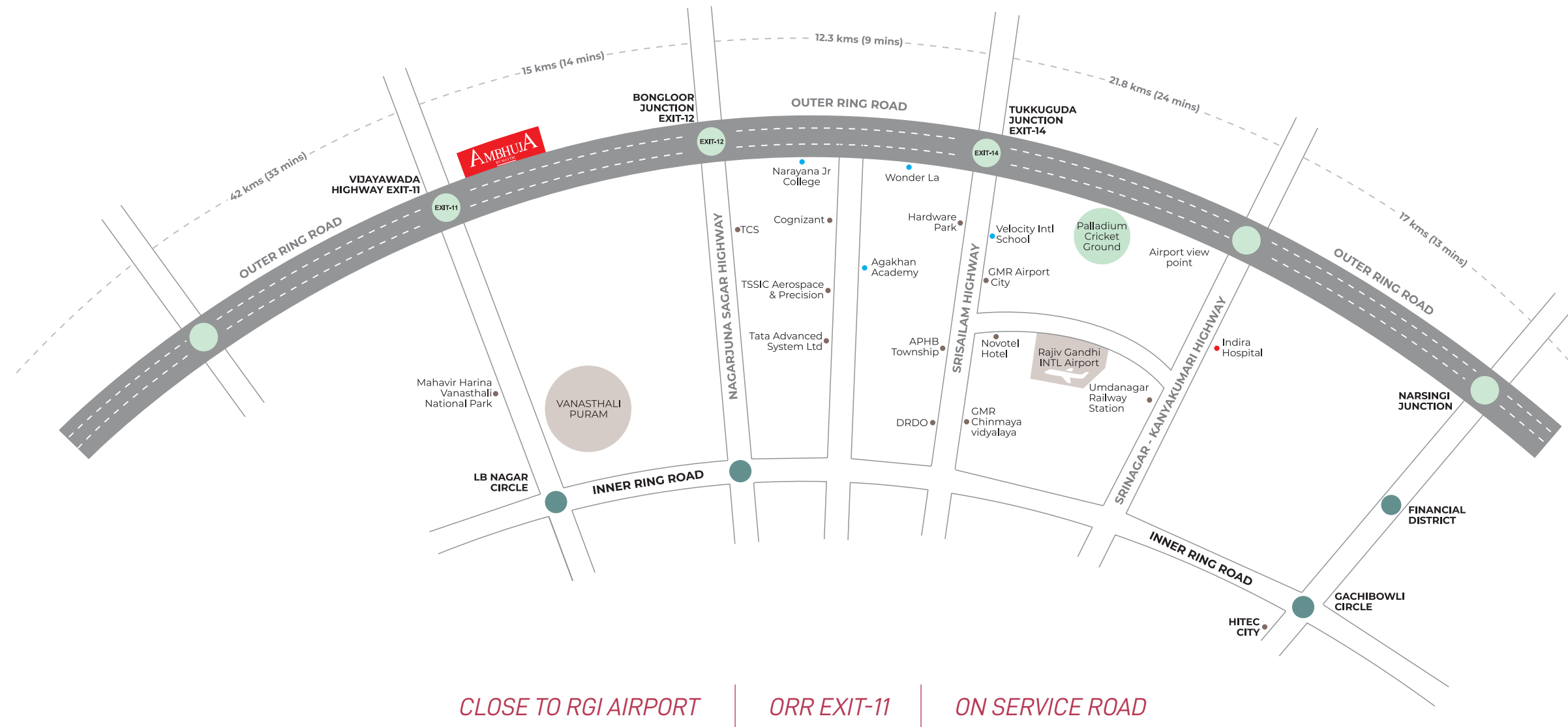


• LIFT

Provision for lift



LOCATION MAP



MAYTRI

SANGHI CITY

AMBHUJA

BY MAYTRI



Location Map

Corporate Office : *Plot no 1 and 2, Vanasthali Hills, Vanasthalipuram, Hyderabad-500070*

Site Address : *Survey no:156, Nehru Outer Ring Rd, Exit-11, Pedda Amberpet, Telangana-501511*

| Website: www.maytrigroup.in | Email: sales@maytrigroup.in

Disclaimer: The Design, Specifications, Floor Plans, brochures etc. are subject to change without any prior notice. The computer generated images, walkthroughs or any other rendered images are the artist's impressions and are mere indication of the actual design purely for the purpose of reference. Nothing included here under shall be deemed to be a legal offering for Sale/ Agreement..