



Developers : **SSD Infrastructure**

Site: **Affinity White**, B/h Bombay Shopping Centre, Near Ambedkar Circle, Alkapuri, Vadodara.

Ph.: +91 97277 67065, 79908 58265, 9099035679 Email: [affinitywhite2019@gmail.com](mailto:affinitywhite2019@gmail.com) [www.affinitywhite.in](http://www.affinitywhite.in)

Architect: **ASQUARE** | Structural Engineer: **Chirag Shah**  
ARCHITECTURE & INTERIORS

**Disclaimer:** All plans are subject to amendments and approval by the relevant authorities. All photography and computer imagery are artist's impression and are provided for illustrative and indicative purposes only. While every reasonable care has been taken in providing this information, the developers cannot be held responsible for any inaccuracy. Subject to Vadodara Jurisdiction.

RERA No.: PR/GJ/VADODARA/VADODARA/Others/RAA04943/280219 Gujarat RERA Website: [www.gujrera.gujarat.gov.in](http://www.gujrera.gujarat.gov.in)

design: [arnold&arnon@9824092010](mailto:arnold&arnon@9824092010)



4 BHK LUXURY APARTMENTS

*True happiness comes when you live beyond...*

*Beyond regular aesthetics*

*Beyond routine luxury*

*Beyond ordinary residences &*

*Beyond average location.*



*P*resenting Affinity White, an elusive blend of superlative luxury and a super prime location. 4 BHK signature apartments situated right behind Bombay Shopping Centre, Alkapuri, that tuck you away into tranquil environs while keeping you incredibly close to almost everywhere.  
Welcome to

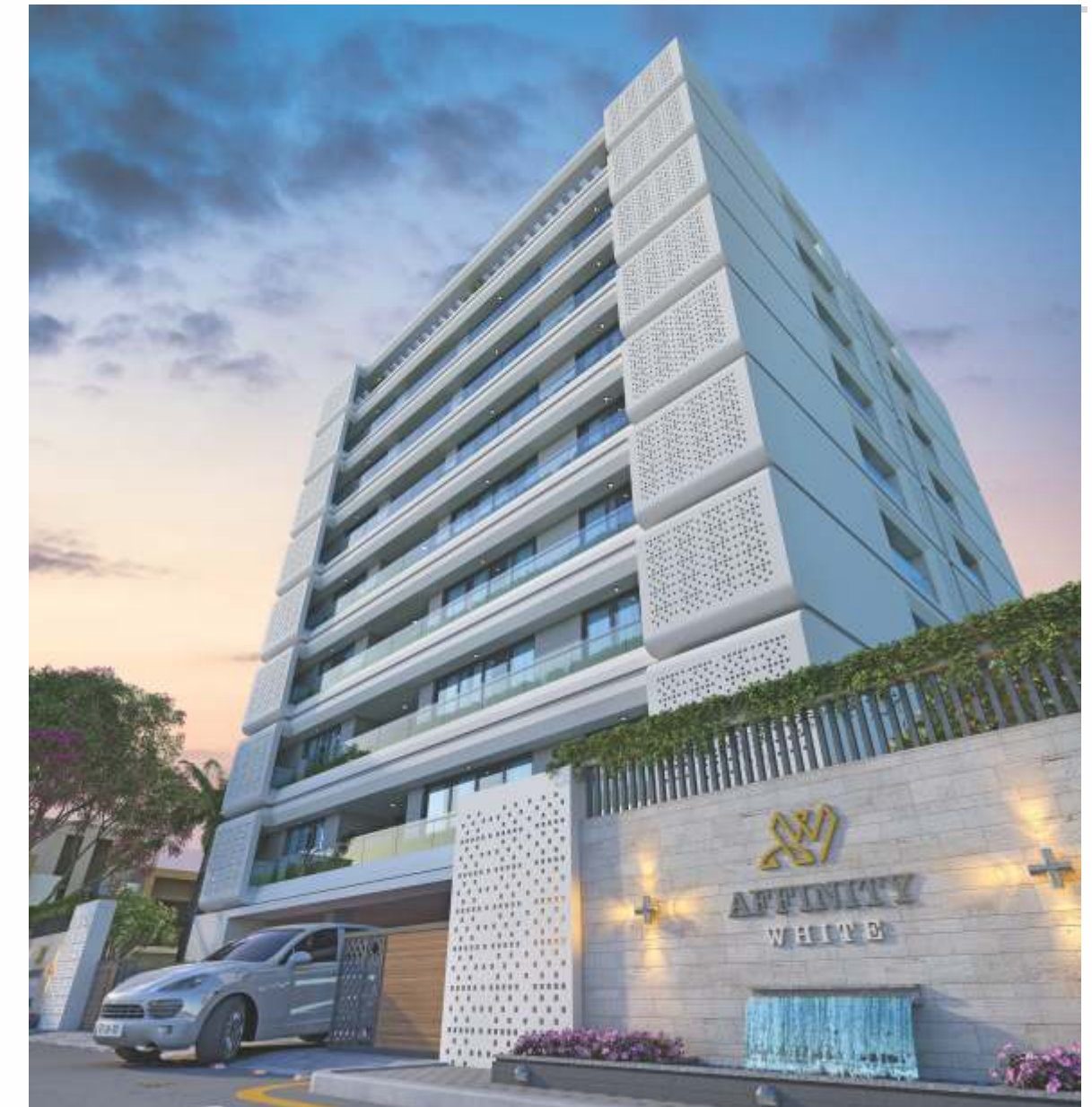
*a life beyond your dreams...*





*Beyond regular aesthetics*

*Very chic and contemporary, Affinity White is modeled to exude unparalleled class. Stylish rhythmic patterns seamlessly blend with fine finishing to offer a stellar elevation that is both elite and timeless.*

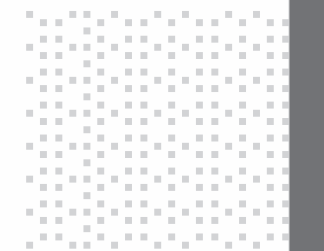




*Beyond routine luxury*

*Affinity White is thoughtfully designed to offer just two apartments per floor to ensure superior exclusivity. Along with privacy the meticulous planning ushers in ample aeration and natural light across each abode.*

**TWO APARTMENTS PER FLOOR 2229 SQ.FT.**





## *Beyond ordinary residences*

*Expansive living areas with immaculate finish and premium fixtures are crafted for a truly extraordinary living experience. Clean linear layouts offer maximum space for personalized interior preferences. Add to it the bliss of open air decks and what you get is sophisticated comfort at its best.*





 Typical floor plan



### Salient Features

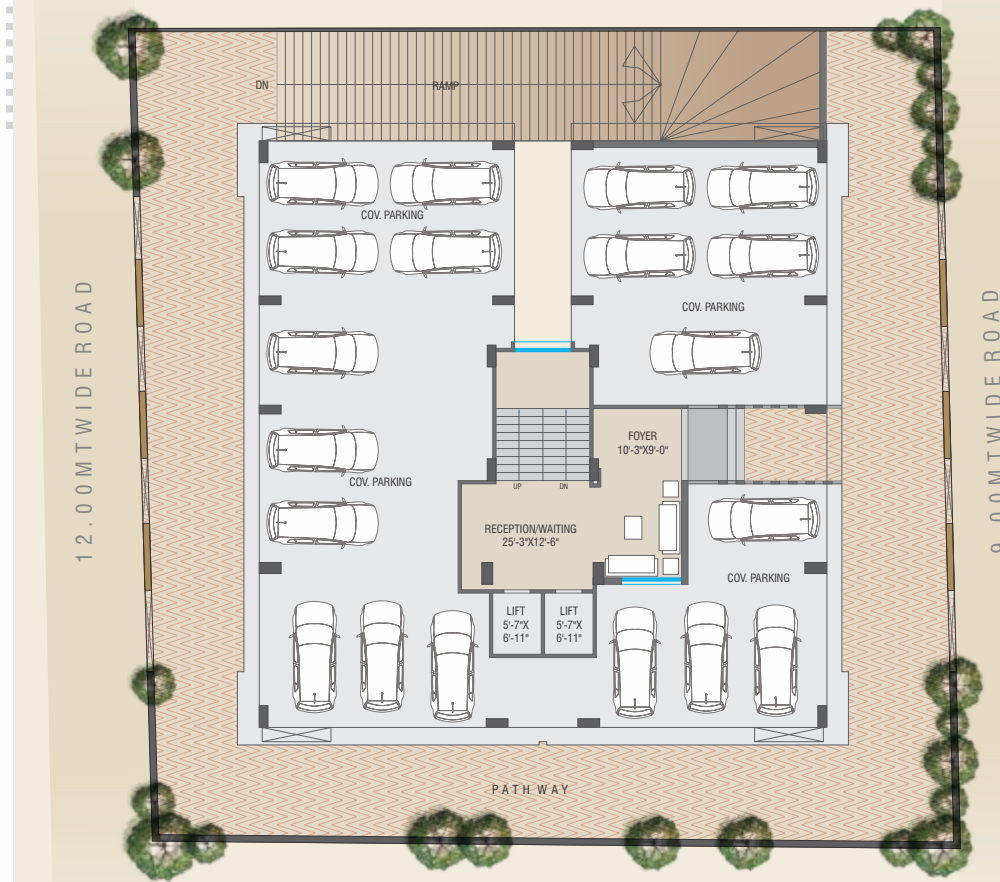
- Landscaping all around the campus
- Elegant Ground Floor Lobby
- Automatic elevators (2 nos.) with one of stainless steel finish from Schindler/ equivalent
- Generator for Power Backup (for common amenities)
- Landscaping of Terrace garden with covered seating
- Automatic Main Gate
- 11 ft. Slab Height for airy & spacious looking interiors
- Central softened water from bore and/or corporation supply
- Common STP and /or corporation drainage



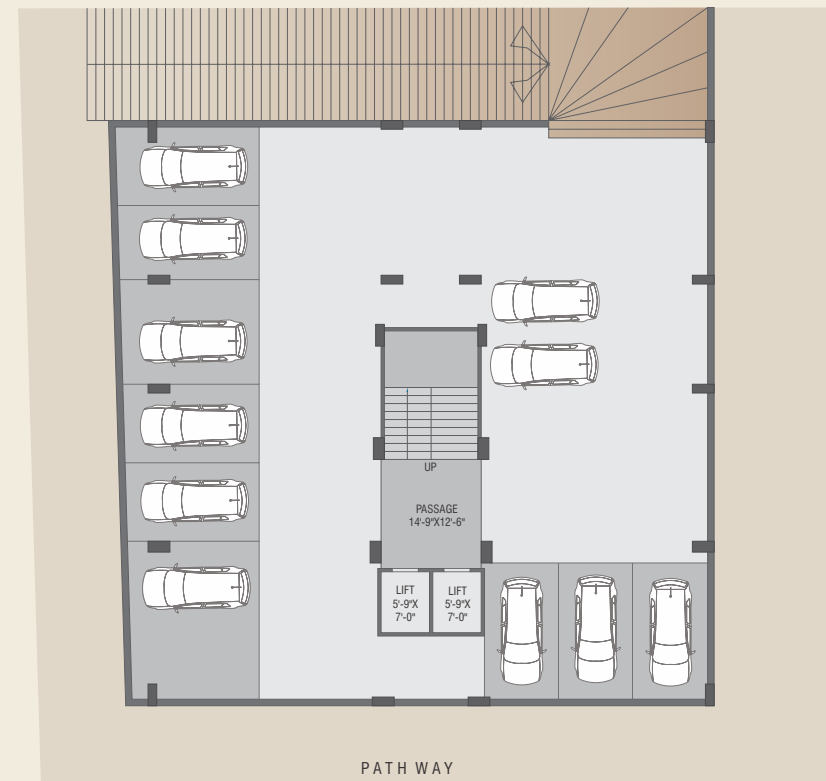
### Terrace floor plan



## Ground floor plan



## Basement floor plan



### PROJECT LOCATION HIGHLIGHTS:-

- The Project is Located at the heart of Vadodara City – Alkapuri.

### PROJECT AT A GLANCE:-

- Only TWO Apartments on each floor with 2229 Sft Built-Up area.
- Stair case 6'ft wide.
- TWO Car Parking Allotted for each Apartment.
- Open Air space around the Campus.
- Invertor in each Apartment for In House Power Backup.
- Intercom facility with video caller.
- Fire Safety System.
- Rainwater Harvesting System.

### LIVING AREA / KITCHEN SPECIFICATIONS:-

- Italian Marble flooring.
- Premium Granite platform with provision for Modular kitchen fittings.

### ROOM SPECIFICATIONS:-

- Decorative Main Door with 8 ft. Height and all doors of same height with veneer polish.
- Balcony / French window, UPVC / Aluminium windows 3 track with clear Glass. & Mosquito Net.
- Laminated Wooden Flooring / Premium Vitrified Tiles in all Bedrooms.
- Standing Balcony in all Bedrooms.
- All 5 Bathrooms with Duravit sanitary accessories & Hansgrohe Bath fittings.
- Hot water Facility in all Tabs.
- All Ac point with Concealed Copper piping with drain pipe.
- All Electric point High-tech remote control automation.
- External walls with Apex or textured finish. Internal walls with punning finish & POP ceiling.

## Key plan



### A super-prime location

- Railway station: 05 mins (2 Km) • Airport: 17 mins (8.3 Km) • School: 02 mins (700 mts.) • Multiplex: 02 mins (800 mts.) • Hospital: 04 mins (950 mts.)

\*All distances are approximate.

### Common Amenities

- 2 Fully automated ultra-Modern Stretcher Elevators with wheel chair access.
- Power Backup for all Common Amenities.
- Central Water Softner Plant.