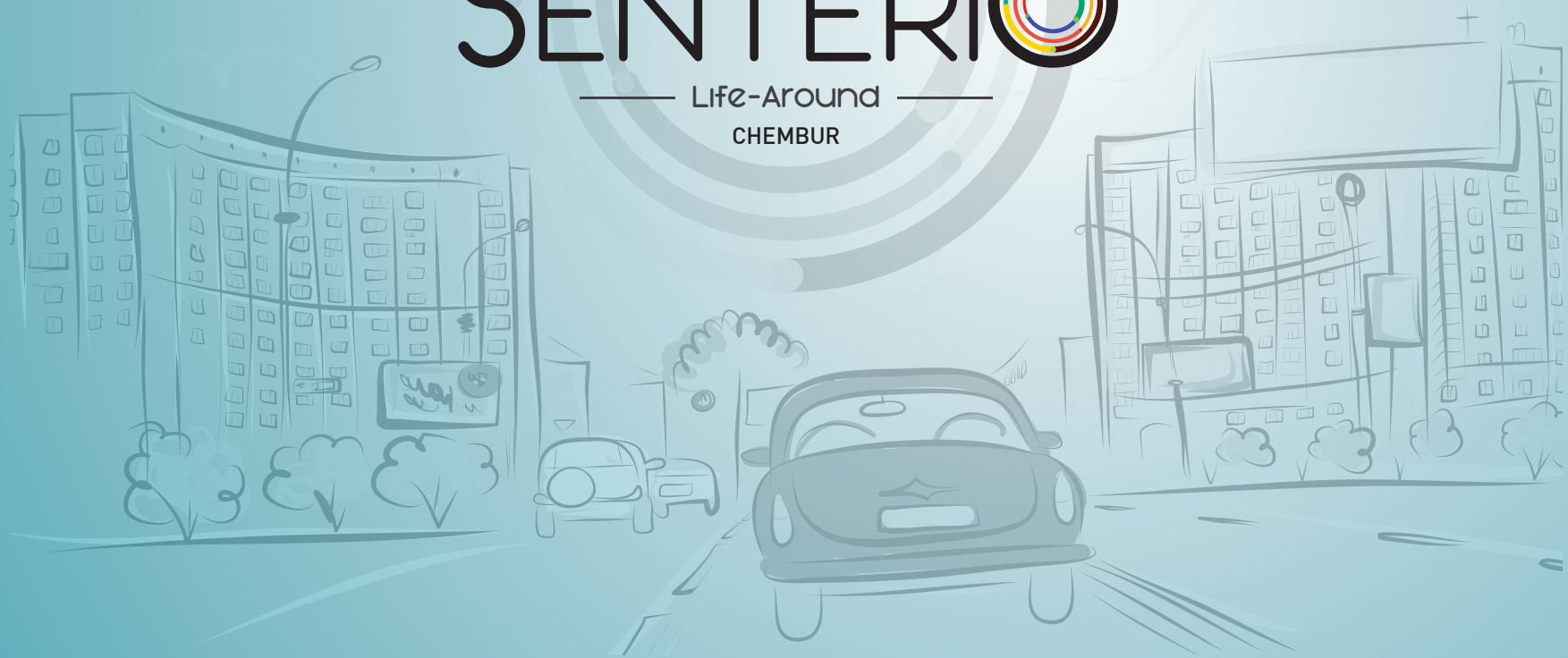


EVERYTHING AROUND THE HOME

VEENA
SENTERIO

Life-Around

CHEMBUR



PERFECT LIVING AROUND THE HOME

ONE BHK SPACIOUS APARTMENTS TO TURN YOUR LIFE AROUND

Isn't it great when your life gets perfect beginning at the heart of everything you wished for it?

Centrally located, close to all conveniences, connected to everywhere with a peaceful location.
Come experience pride feeling of your own new home at **Veena Senterio**.



Project Hallmarks:

- Magnificent 3 towers of Stilt + 16 storeys
- Situated in the heart of Chembur
- Offering perfect 1 BHK
- Fully Air-Conditioned entrance lobby
- Rooftop Yoga / Meditation corner
- Rooftop Seating area
- Hi-tech AC Gymnasium
- Advanced security with CCTV surveillance & intercom network
- Ample car parking

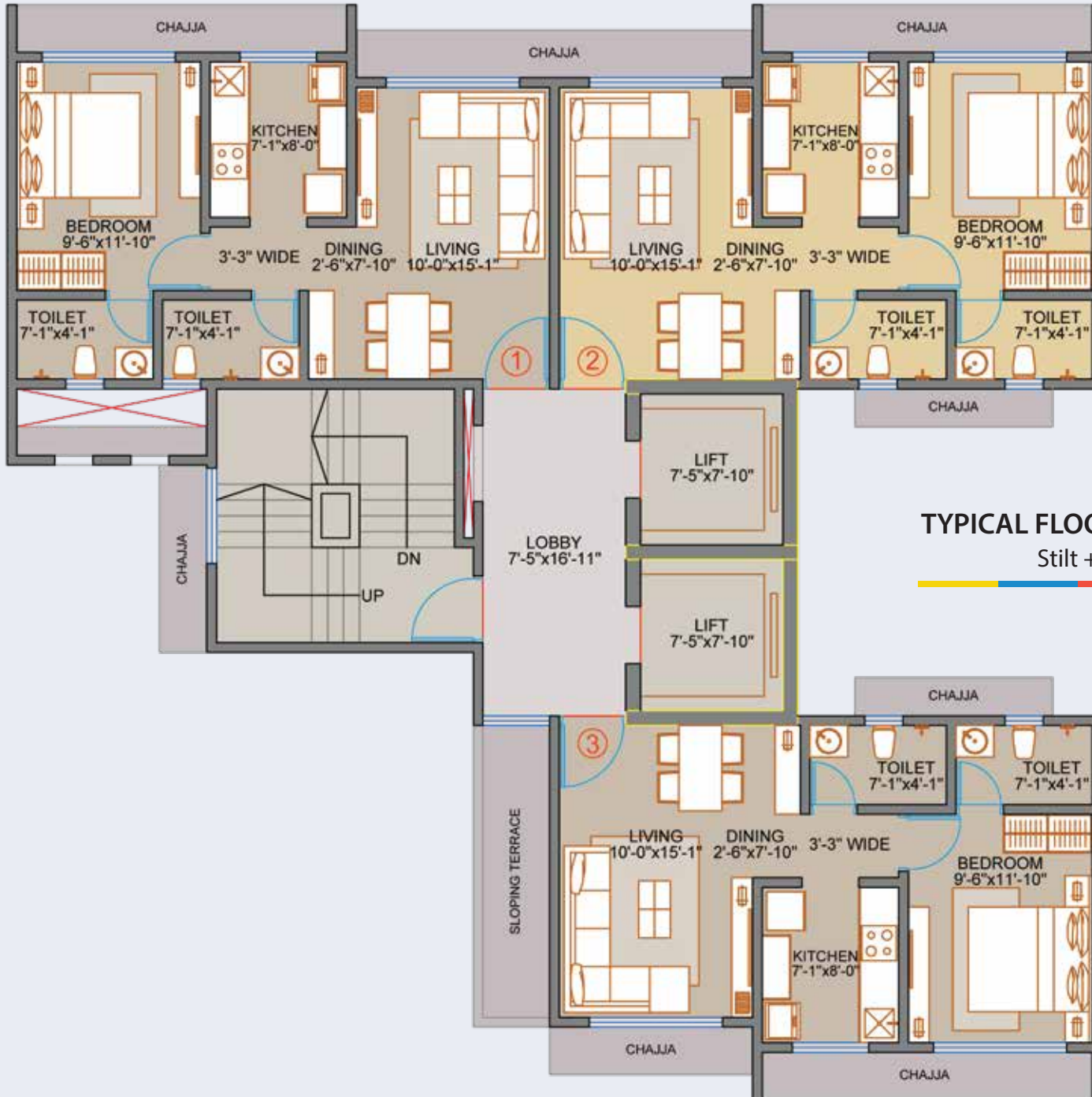




LAYOUT PLAN

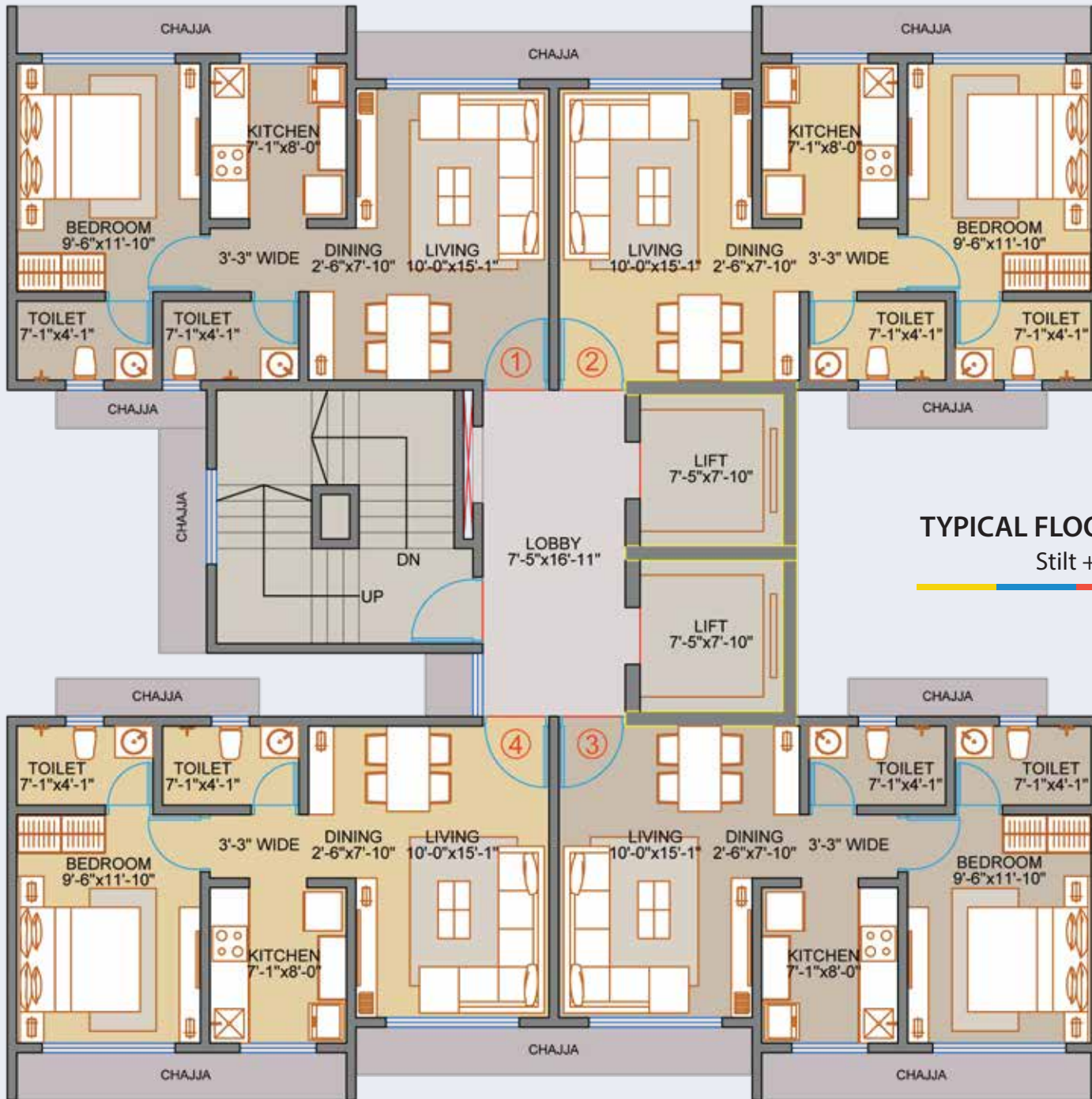
No of Storey's	: Stilt + 16 Floors
Total No of Wings	: 3 (A, B & C wing)
Type of Units	: 1 BHK



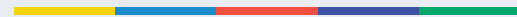


TYPICAL FLOOR PLAN - WING A
 Stilt + 16 Floors





TYPICAL FLOOR PLAN - WING B
Stilt + 16 Floors





TYPICAL FLOOR PLAN - WING C
 Stilt + 16 Floors



A LIFESTYLE AROUND THE HOME

APARTMENT AMENITIES

FLOORING

- Vitrified flooring in living, dining, bedroom and kitchen

KITCHEN

- Granite platform with stainless steel sink
- Ceramic tiles dado upto lintel height
- Piped gas connection
- Modular Kitchen

TOILETS

- Designer vitrified tiles on walls upto door height
- Granite counter basin
- Branded sanitary ware & CP fittings
- Hot & cold water divertor shower in common toilets
- Hot & cold water divertor shower in master toilet

DOORS

- Wooden door frames
- Hot-pressed solid core flush doors with laminate finish
- Designer hardware fittings

WINDOWS

- Coloured powder coated /Anodized aluminum sliding windows with glass
- Mosquito net shutter
- Granite/Marble window sills

WALLS & CEILING

- Internal walls with gypsum finish and Lustre/Royal paint
- Ceiling with gypsum finish and plastic paint
- External walls sand-faced plaster with texture finish and acrylic paint

ELECTRICAL FITTINGS

- Sufficient electric points with branded modular switches
- Concealed fire-resistant copper wiring
- AC, TV and Telephone points
- Earth leakage circuit breaker

TOWER FEATURE

- Earthquake resistant RCC framed structure
- Fully air-conditioned entrance lobby
- Well-designed lift lobbies on each floor
- Elevators of Reputed make
- Fire Fighting systems for common area as per norms

SECURITY FEATURES

- Video door phone / Intercom for each flat
- CCTV camera in common area

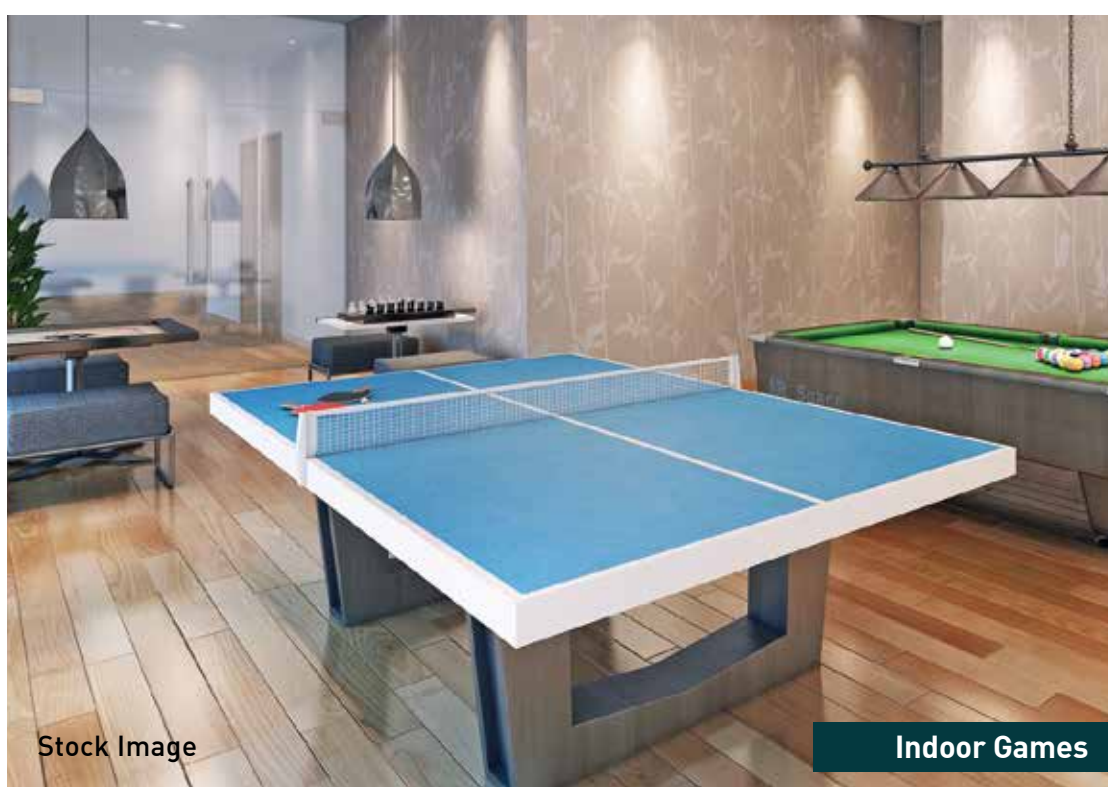
EXTERNAL AMENITIES

- Rooftop Seating Area
- Rooftop Yoga / Meditation Corner
- Hi-tech Ac Gymnasium
- Indoor Games Room
- Ample Stilt Car Parking



Stock Image

AC Gymnasium



Stock Image

Indoor Games



Stock Image

Rooftop Seating Area



Stock Image

Rooftop Meditation Area

EXCELLENT CONNECTIVITY
& CONVENIENCE

EVERYTHING AROUND YOU

In a cosmopolitan city like Mumbai, where everything is compact and located far from the desired needs, Veena Senterio is an exclusive address present with excellent connectivity.

Situated in the heart of Chembur, the prominent location of Greater Mumbai with major schools, colleges, malls, multiplexes, banks, hospitals nearby, Veena Senterio is truly a world of conveniences for you. Live here and experience the world coming to you at your doorstep.



Location Map



SOME OF OUR PRESTIGIOUS PROJECTS



VEENA SIGNATURE - Kandivali (W)



VEENA SERENITY - Chembur



VEENA DYNASTY - Vasai (E)



CREST - Andheri (W)



Veena Developers recognized for their Honesty, Integrity, and Transparency, since 1990. It's been 30 years we have been delivering quality construction for the customers. Till now **30 projects delivered with OC on time** across Mumbai. Total approx **4 million sq.ft** delivered & more than **4300 happy customers** and counting.

Our projects are at strategic locations and span across key residential and commercial developments such as:

- KANDIVALI (EAST)
- CHEMBUR
- VASAI (EAST)
- KANDIVALI (WEST)
- ANDHERI (WEST)
- VASAI (WEST)


UPCOMING PROJECTS

- CHEMBUR
- KANDIVALI (WEST)
- ANDHERI (EAST)
- PALGHAR (WEST)
- BORIVALI (EAST)
- MALAD (WEST)
- SANTACRUZ

Site Add: Veena Senterio, Sahakar Nagar Road No. 3, Shell Colony, Near Tilak Nagar Railway Station, Chembur, Mumbai - 400071.
Email: veenasenterio@veenadevelopers.com • www.veenadevelopers.com

Corp. Office: A-901, 9th Floor, Kaledonia, Sahar Road, Opp. D Mart, Near Railway Station, Andheri (E), Mumbai - 400 069.

Call: 8767 352 352

 MahaRERA Registration Number: P51800024452 | Available a: <http://maharera.mahaonline.gov.in>