



#STAY
CONNECTED



TRUSTFORT
ICON



Artistic Impression

#STAY CONNECTED to the Future!

Koregaon Park Annexe, the vibrant heart of Pune, offers you seamless connectivity and modern living. It provides effortless access to IT hubs, renowned educational institutions, and lively entertainment zones. With robust infrastructure, urban development, and unmatched convenience, Koregaon Park Annexe perfectly blends work, leisure, and lifestyle. It's where aspirations meet opportunities, ensuring you stay ahead in every aspect of life.



WHY KP ANNEXE?

01.

Proximity to major business hubs

Kharadi | Magarpatta | Yerwada
Viman Nagar

02.

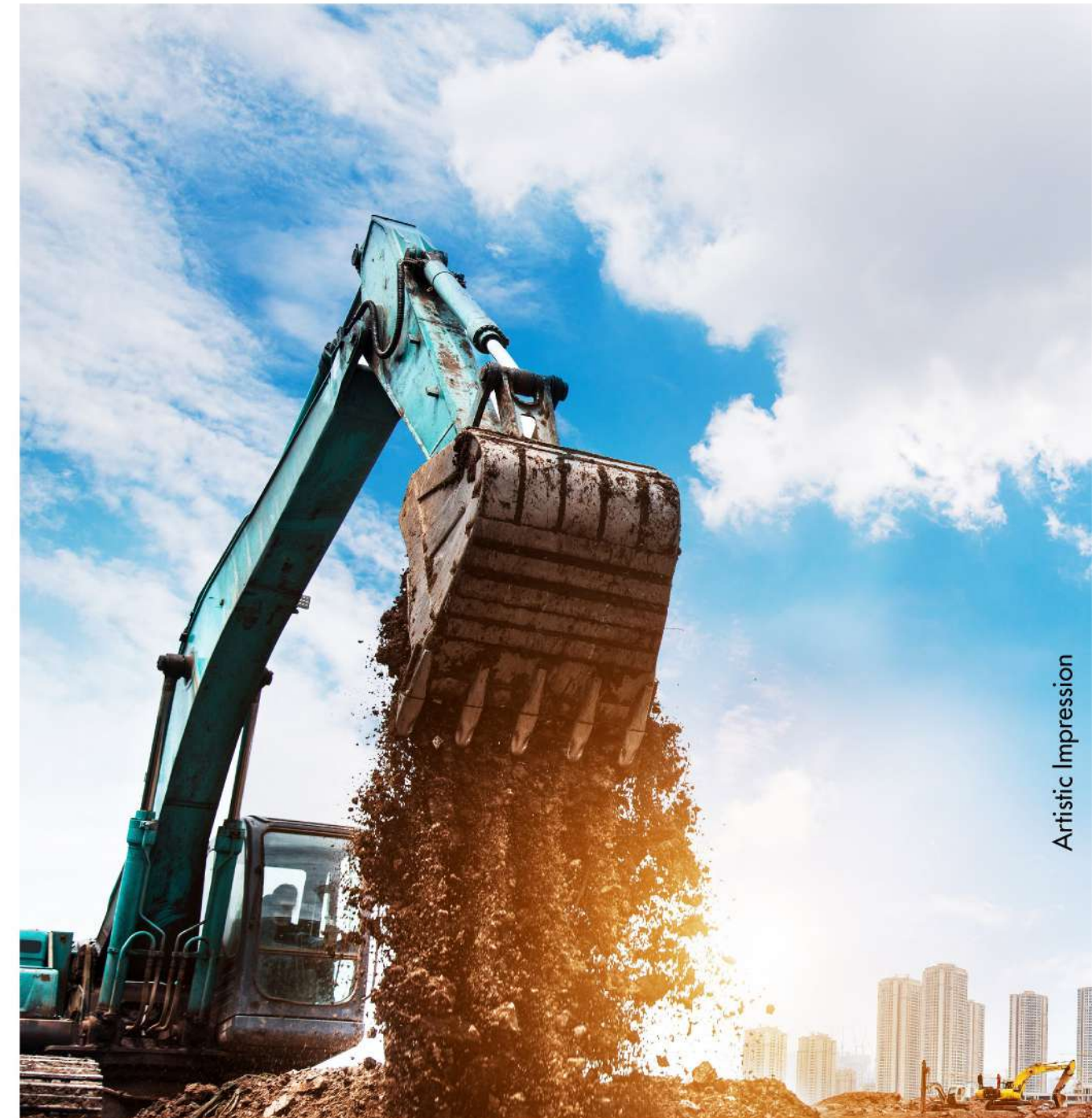
High rental potential

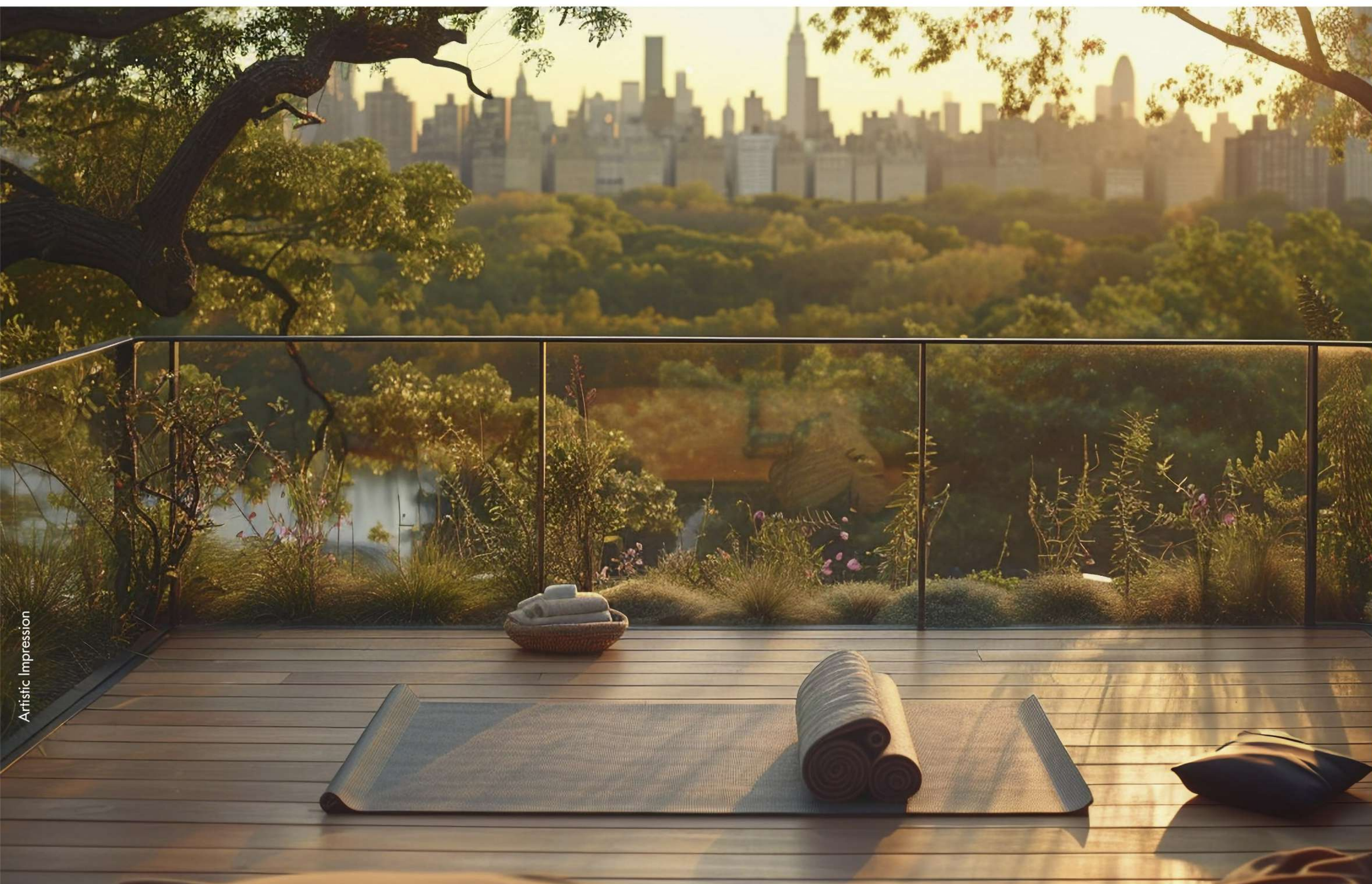
Increase in migration of working population

03.

Proposed infrastructure developments

Kharadi-Mundhwa Bridge | Mundhwa
Flyover on Ghorpadi Road | Mula-Mutha
Riverfront Development Project





Artistic Impression



#STAY

CONNECTED

to Inner Peace!

Surround yourself with calmness at Trustfort Icon, where lush green botanical gardens invite you to disconnect from the bustling city. Enjoy picturesque strolls, peaceful moments, and refreshing escapes. Designed to bring balance to your busy lifestyle, these greens provide a space to unwind, recharge, and reconnect with nature, all within your living community.

UPDATE: TIMES OF INDIA (27th Aug, 2024)

The Botanical Survey of India (BSI) is set to inaugurate a botanical garden in Mundhwa, Pune, spanning 44 acres and dedicated to preserving the state's endemic plant species. The garden will feature over 400 species of plants native to India, with 50 of them being exclusively endemic to Maharashtra.

#STAY CONNECTED

to the World of Conveniences!

Situated in Koregaon Park Annexe, Trustfort Icon connects you to Pune's major destinations effortlessly. With schools, hospitals, shopping centers, and offices just minutes away, enjoy the convenience of living in a well-connected neighborhood. It ensures that everything you need is always within reach, making life stress-free and time-efficient. Here, you transform your everyday living into a seamless experience.

Key Locations

- Koregaon Park **800 M** (5 Mins)
- Kalyani Nagar **2.5 KM** (12 Mins)
- Hadapsar **3 KM** (15 Mins)
- Kharadi **5 KM** (18 Mins)
- Viman Nagar **5.5 KM** (19 Mins)

Hotel

- Westin **1.5 KM** (2 Mins)
- Conrad **4.3 KM** (14 Mins)
- Hyatt Regency **5.5 KM** (15 Mins)
- Novotel **5.7 KM** (15 Mins)

Education

- Mentor Int. School **1.8 KM** (6 Mins)
- VIBGYOR School **1.8 KM** (6 Mins)
- The Bishop's School **3.3 KM** (9 Mins)
- The HDFC School **4.0 KM** (11 Mins)
- The Orbis School **4.2 KM** (13 Mins)
- Pawar School **4.5 KM** (15 Mins)
- Symbiosis College **4.8 KM** (20 Mins)

Leisure

- KOPA Mall **1.4 KM** (2 Mins)
- Seasons Mall **3.4 KM** (5 Mins)
- Amanora Mall **3.5 KM** (10 Mins)
- Phoenix Mall **5.7 KM** (15 Mins)

Hospitals

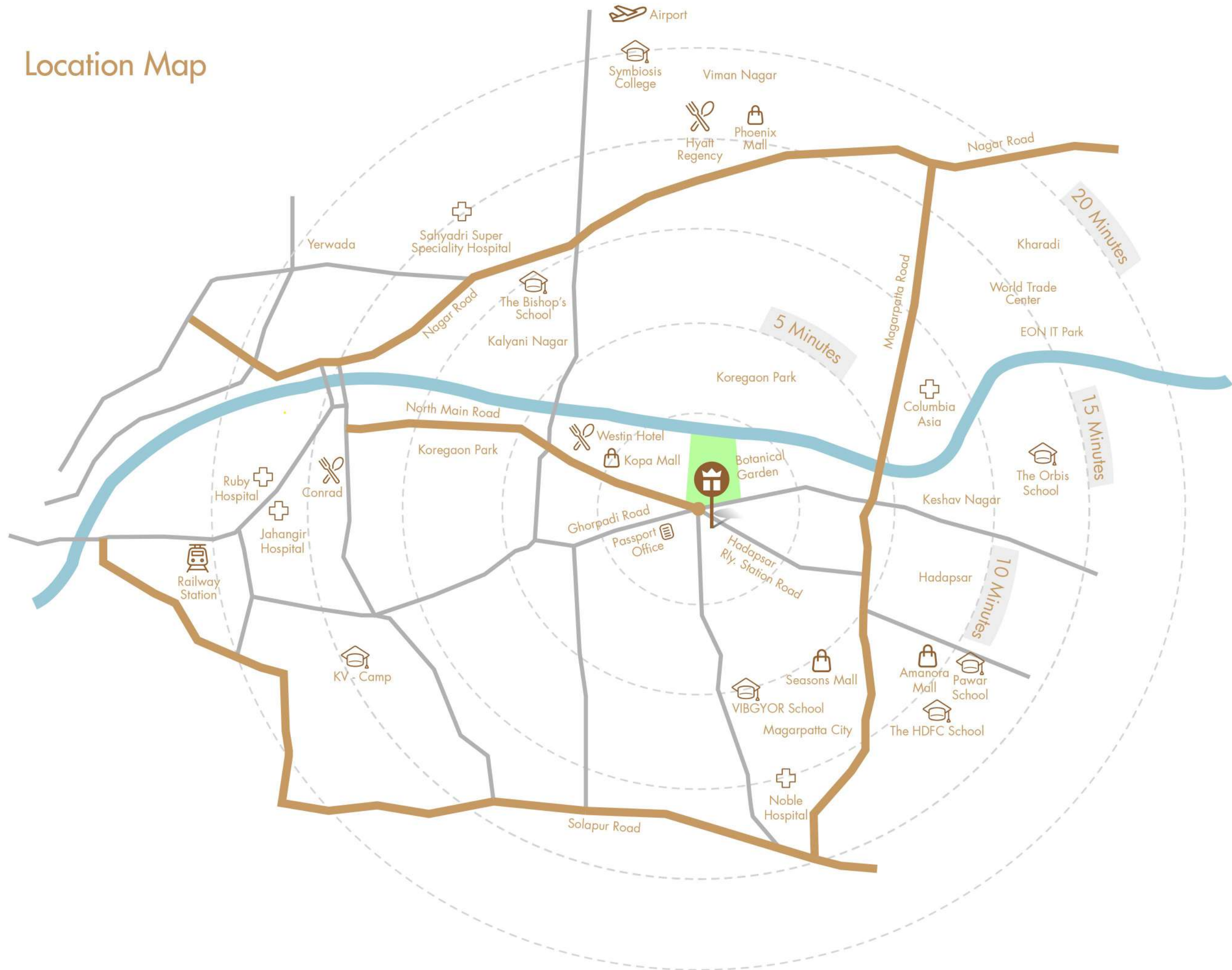
- Columbia Asia **3.7 KM** (8 Mins)
- Noble Hospital **4.1 KM** (11 Mins)
- Sahyadri Hospital **4.6 KM** (15 Mins)
- Jahangir Hospital **5.3 KM** (16 Mins)
- Ruby Hospital **5.3 KM** (18 Mins)

Travel

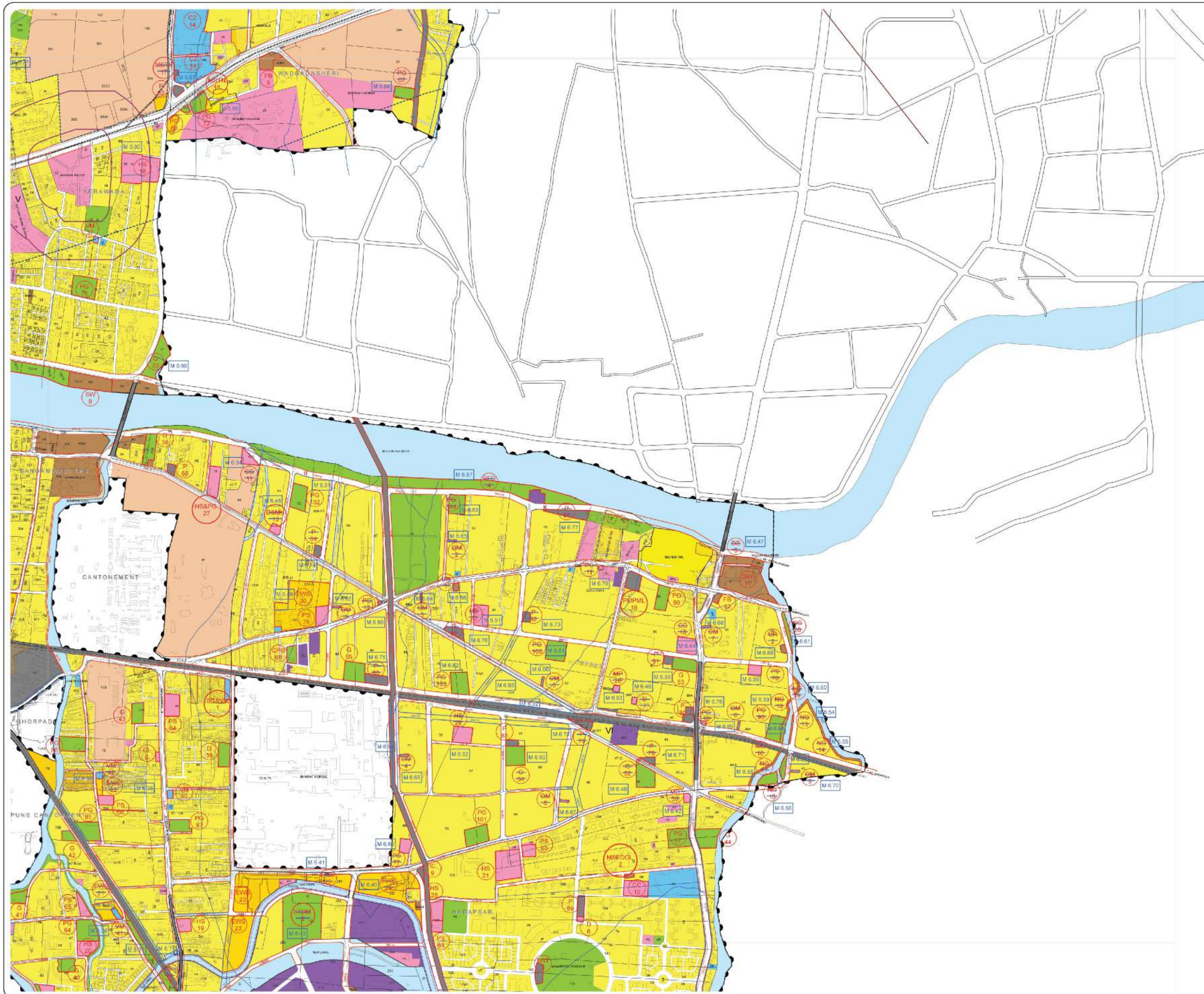
- Railway Station **6.1 KM** (21 Mins)
- Airport **6.2 KM** (22 Mins)



Location Map



Time mentioned is based on the time shown by Google Map Location during non-traffic hours.

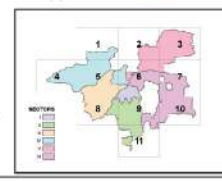


MODIFICATION NUMBER	RESERVATION NUMBER/ ZONE	DETAILS	SHEET NUMBER
M.6.66	MSTN-18	MSTN-18 Reservation rearranged with additional area as shown on plan.	7
M.6.67	MSTN-17	MSTN-17 Reservation relocated and area there under included in Reservation G2-14 as shown on plan.	7
M.6.68	PG-67	PG-67 Reservation deleted and included in Residential Zone.	7
M.6.69	G-33	Part area of G-33 Reservation on southern side deleted and included in PSP Zone.	7
M.6.50	HS-18	Part area of HS-18 Reservation on Eastern side deleted and included in PSP Zone, part on north-western side shown as School.	7
M.6.34	CC-11	CC-11 Reservation deleted and included in Residential Zone.	7
M.6.35	EWS-21	EWS-21 Reservation deleted and included in Residential Zone.	7
M.6.36	EWS-22	EWS-22 Reservation deleted and included in Residential Zone.	7
M.6.38	VM-41	VM-41 Reservation deleted and included in Residential Zone.	7
M.6.39	VM-42	VM-42 Reservation deleted and included in Residential Zone.	7
M.6.40	EWS-24	EWS-24 Reservation deleted and included in Residential Zone.	7
M.6.41	EWS-25	EWS-25 Reservation deleted and included in Residential Zone.	7
M.6.42	MP-30	MP-30 Reservation redesignated as Shopping Center.	7
M.6.43	STDN-2	STDN-2 Deleted and included in Residential Zone.	7
M.6.44	CC-16	CC-16 Reservation deleted and included in Residential Zone.	7
M.6.45	DMM-13	DMM-13 Reservation deleted and included in Residential Zone.	7
M.6.46	D-7	D-7 Reservation deleted and included in Residential Zone.	7
M.6.47	DD-5	DD-5 Reservation deleted and included in Green Belt.	7
M.6.48	EWS-30	EWS-30 Reservation rearranged, showing the alignment of existing road on west side of Reservation, as shown on plan.	7
M.6.49	G-52	G-52 Reservation deleted and included in Residential Zone.	7
M.6.50	G-53 P-81	G-53 Reservation continued with additional area of Reservation P-81 and Western side Residential area as shown on plan.	7
M.6.51	HS-28	HS-28 Reservation deleted and included in Residential Zone.	7
M.6.52	HS-26	HS-26 Reservation deleted and included in Residential Zone.	7
M.6.53	MP-28	MP-28 Reservation deleted and included in Residential Zone.	7
M.6.54	NG-13	NG-13 Reservation deleted and included in Green Belt.	7
M.6.55	NG-14	NG-14 Reservation deleted and included in Green Belt.	7
M.6.56	NG-15	NG-15 Reservation deleted and included in Green Belt.	7
M.6.57	NG-16	NG-16 Reservation deleted and included in Green Belt.	7
M.6.58	NG-17	NG-17 Reservation deleted and included in Green Belt.	7
M.6.59	NG-18	NG-18 Reservation deleted and included in Green Belt.	7
M.6.60	NG-19	NG-19 Reservation deleted and included in Green Belt.	7
M.6.61	NG-20	NG-20 Reservation deleted and included in Green Belt.	7
M.6.52	CM-1	CM-1 Reservation deleted and included in Residential Zone.	7
M.6.53	CM-2	CM-2 Reservation deleted and included in Residential Zone.	7
M.6.54	CM-3	CM-3 Reservation deleted and included in Residential Zone.	7
M.6.55	CM-4	CM-4 Reservation deleted and included in Residential Zone.	7
M.6.56	CM-5	CM-5 Reservation deleted and included in Residential Zone.	7
M.6.57	CM-6	CM-6 Reservation deleted and included in Residential Zone.	7
M.6.58	CM-7	CM-7 Reservation deleted and included in Residential Zone.	7
M.6.59	CM-8	CM-8 Reservation deleted and included in Residential Zone.	7
M.6.70	CM-9	CM-9 Reservation deleted and included in Residential Zone.	7
M.6.71	P-78	P-78 Reservation deleted and included in Residential Zone.	7
M.6.72	P-79	P-79 Reservation redesignated as Railway Extension Reservation with additional area as shown on plan.	7
M.6.73	P-82	P-82 Reservation deleted and included in Residential Zone.	7
M.6.74	P-84	P-84 Reservation deleted and included in Residential Zone.	7
M.6.75	G-55	G-55 Reservation continued with additional area of Reservation P-85 and Eastern side Residential area as shown on plan.	7
M.6.76	P-86	P-86 Reservation deleted and included in Residential Zone.	7
M.6.77	P-87	P-87 Reservation deleted and included in Green Belt.	7
M.6.78	PC-10	PC-10 Reservation deleted and included in Residential Zone.	7
M.6.79	PC-11	PC-11 Reservation deleted and included in PSP Zone.	7
M.6.80	PC-12	PC-12 Reservation deleted and included in Residential Zone.	7
M.6.81	PG-100	PG-100 Reservation deleted and included in Residential Zone.	7
M.6.82	PG-103	PG-103 Reservation redesignated as PMPML.	7
M.6.83	PG-104	PG-104 Reservation deleted and included in Residential Zone.	7
M.6.84	PG-98	PG-98 Reservation deleted and included in Residential Zone.	7
M.6.85	PS-76	PS-76 Reservation redesignated as HS & PS.	7
M.6.88	PS-77	PS-77 Reservation deleted and included in Residential Zone.	7
M.6.87	RF-D4	RF-D4 Reservation deleted and included in Green Belt.	7
M.6.88	URS-1	URS-1 Reservation deleted and included in Residential Zone.	7
M.6.89	URS-2	URS-2 Reservation deleted and included in Residential Zone.	7
M.6.90	P-83, G-54	P-83 Reservation continued with additional area of Reservation G-54 and Eastern side Residential area as shown on plan.	7
M.6.91	PG-102	PG-102 Reservation Continued with additional area of Eastern & Northern side Residential area as shown on plan.	7
M.6.92	D.P. ROAD	Part of 24 mtr. D.P. Road and Residential Zone on both side of Railway Track is included in New Reservation on Railway Extension as shown on plan.	7
M.6.93	RESIDENTIAL	Included in New Reservation, Transportation Hub as shown on plan.	7
M.6.94	INDUSTRIAL	Road Alignment shifted towards East in PMC limit as shown on plan.	7
M.6.196	D.P. ROAD	Road widening deleted is shown as cut lines (//) and modified road width shown in blue lines and written in text as shown on plan.	All

SHEET NO - 7

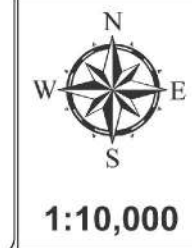
MODIFICATION U/S 28(4) SHOWN AS

- NOTES:
- METRO ALIGNMENT SHOWN IN THIS MAP IS INDICATIVE AND MAY CHANGE AS PER THE SITE CONDITION.
 - FLOOD LINES (RED AND BLUE) ALONG MULA AND MUTHA RIVER, SHALL BE PART OF DEVELOPMENT PLAN AS AND WHEN RECEIVED FROM IRRIGATION DEPT DULY MARKED WITH REFERENCE TO SURVEY NO./C.T.S. NO./P.NO. BOUNDARY.
 - THE LAND AVAILABLE DUE TO MODIFICATION IN ROADROAD WIDENING SHALL BE INCLUDED IN ADJOINING RESERVATIONZONE.



COMMITTEE APPOINTED U/S 162 OF M.R.&T.PACT 1966

-sd-	-sd-	-sd-
PRAKASH BHUKTE CONVENER AND JOINT DIRECTOR TOWN PLANNING, PUNE DIVISION	KUNAL KUMAR MEMBER AND MUNICIPAL COMMISSIONER PUNE MUNICIPAL CORPORATION	S.CHOCKALINGAM CHAIRMAN AND DIVISIONAL COMMISSIONER, PUNE



PUNE MUNICIPAL CORPORATION
SHIVAJINAGAR, PUNE-411005

DRAFT DEVELOPMENT PLAN (2007-2027)
FOR OLD PMC LIMIT OF
PUNE MUNICIPAL CORPORATION
PUBLISHED U/S 28(4) OF M.R.T.P. ACT 1966

1:10,000



Artistic Impression

3D View - Amenity Floor (17th)

#STAY CONNECTED to New Excitements!

Discover a world of endless possibilities with Trustfort Icon's thoughtfully curated amenities. From state-of-the-art fitness center and swimming pool to kids' play area and community space, every facility is designed to keep you energized, entertained, and engaged. Whether it's fitness, relaxation, or socializing, something is exciting for every family member, ensuring life is always filled with joy.



Amenities At Trustfort Icon



Swimming Pool
with Deck



Gymnasium



Children's
Play Area



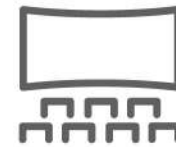
Senior Citizen
Zone



Seating
Plaza



Toddler's
Corner



Open Screen
Theatre



Gazebo



Game Zone



Barbeque Deck



Pantry



Yoga Deck /
Dance Floor



Artistic Impression



#STAY

CONNECTED

to Big Sized Living!

Trustfort Icon redefines comfort with generously designed spaces that suit modern living. Enjoy open layouts, expansive balconies, and thoughtfully planned interiors that provide a sense of freedom and functionality. Big-size living means more room to create memories, cherish moments, and celebrate life without compromise. Welcome to a home that truly breathes.



3 BHK

1310 SQ. FT.

ONWARDS



4 BHK

1775 SQ. FT.

ONWARDS



Artistic Impression

#STAY

CONNECTED

to the World of Opulence!

Trustfort Icon offers an elevated lifestyle with a premium experience and attention to detail. From high-end fittings to robust construction quality, every home reflects timeless elegance and quality craftsmanship. Experience a life of unparalleled sophistication, where opulence is elevated to create the perfect living space for you and your family.



Specifications At Trustfort Icon

| Flooring

- **Foyer / Living / Dining / Bedrooms & Kitchen**
Vitrified Tiles (800x1600mm)
- **Toilets**
Vitrified Tiles Anti-slip Tiles (600x600mm)
- **Dry Balcony**
Matt Finished Vitrified Tiles (800x1600mm)
- **Balconies**
Vitrified Wooden Finished Tiles (200x1200mm)

| DADO

- **Toilets**
Dado Tiles upto False Ceiling (600x1200)
- **Kitchen Platform**
Full Body Vitrified Tile

| Finishing

- **Walls & Ceiling**
Gypsum Finish with Semi-Acrylic Paint
- **Toilet**
Grid False Ceiling

| Kitchen Fitting/ Counter

- Full Body Vitrified Tile for Kitchen Counter
- Matt Finished SS Sink with Drain Board
- Plumbing and Electrical Provision for Water Purifier
- Electrical Provision for Inverter
- Provision for Chimney
- Provision for Gas Pipeline

| Door & Windows

- UPVC Sliding Windows with Mosquito mesh
- Post Forming Door for Main Door & Bedroom Door
- Post Forming Door with Granite Frame for Toilet

| Security

- Video Door Phone
- CCTV System in Common Areas
- Security Check-point at Entrance
- Fire Fighting System
- Common Area Power Backup

| CP & Sanitary Fixtures

- Sanitary Fixtures of Jaquar or Equivalent Make
- CP Fixtures of Jaquar or Equivalent Make
- Electrical & Plumbing Provision for Geyser

| Electricals

- Concealed Copper Wiring
- Switches of Schindler or Equivalent Make

3 BHK



4 BHK



TRUSTFORT REALTY



Trustfort Realty, founded by visionary entrepreneur Maayur Joshi, stands as a hallmark of excellence in the real estate landscape. It is committed to craft bespoke high-rise towers that redefine city skylines, Trustfort Realty merges precision, creativity, and integrity into every project. Their philosophy is built on working alongside the city's most celebrated architects, distinguished interior designers, legal experts, and top-tier associates—an approach that ensures each creation embodies unparalleled craftsmanship and sophistication.

What truly sets Trustfort Realty apart is its unwavering commitment to transparency and professionalism. The company operates with an ethos of openness, where clients are empowered with clear insights into every stage of the development process. Trustfort Realty's business model exudes trust and credibility, cementing enduring relationships with investors, partners, and homeowners alike.

Focused on developing iconic high-rise structures in key urban locations, the company curates spaces that not only elevate modern living but also become landmarks of architectural brilliance. Each project reflects a harmonious blend of functionality, aesthetics, and luxury—tailored to meet the evolving aspirations of contemporary lifestyles.

Under the dynamic leadership of Maayur Joshi, Trustfort Realty continues to inspire confidence, shaping the future of urban living with bold vision and meticulous execution. With an unyielding commitment to quality and innovation, Trustfort Realty isn't just building towers; it's crafting enduring legacies that stand tall for generations to come.

Upcoming Project Locations





Project Associates

Landowner Partner: Pathare Family

Architect: ANA Consortium Pvt. Ltd.

Liasoning: ANA Consortium Pvt. Ltd.

Structural Consultant: Design Werks Engineering Pvt. Ltd.

Legal: Geeta Atre Kaujalkar (Atre and Associates)

Interior Designer: Poonam Shende Studio

Strategic Partner: Pushpamitra Das (JUSTO Realfintech Pvt. Ltd.)

3D Design: Ajay Parge (Digital Art VRe)

Project Consultants: A to Z Utility Services LLP



TRUSTFORT ICON



www.trustfortrealty.com



MahaRERA No.
P52100078450



Sr. No. 89, Pingale Wasti, Koregaon Park Annexe, Pune - 411036

A Project by

TRUSTFORT
REALTY

This Brochure/ opportunity document is conceptual in nature and by no means a legal offering. All the designs, images, furniture and décor elements and other details shown in the video are purely indicative in nature and do not constitute part of the actual offering. Please note that these are to be treated as purely provisional and informative and as such only. The promoters reserve the right to modify / amend / alter any of the contents in the video / walkthrough in the best interest of the development and as per RERA regulations. The contents herein should not be construed as an offer / invitation to offer / contract. Any party desirous / interested in the project needs to enter in to an Agreement to Sale.