



મેપલ ૩

— ગંગ્લોઝ —

૩ BHK લક્ઝરીયસ ગંગ્લોઝ

Relish life with **ample luxury**



 **મેપલ ૩**
— ગંગોડ —



Enriched lifestyle **near Lambha lake**

A glowing water body always adds surreal charm to the entire surroundings. Now you can enjoy this resort-like experience every day! Maple3 is a scheme of luxurious 3 BHK elegant bungalows, quite near to Lambha Lake in east Ahmedabad.

Live luxuriously, close to the nature.



 **मेपल 3**
— गंगोत्री —

Go beyond charm,
welcome gracious elegance

Maple3 bungalows offers you a true,
pleasant living experience, with careful planning
and ample amenities.





मेपल 3

— बंगलोज —



Upscale lifestyle with **an array of amenities**



Entrance Gate with 24hrs. Security



CCTV Camera



Landscaped Garden



Indoor Sports Carom & Chess



Library



Sit-out Areas



Parking



24X7 Water Supply



Paved Road with Street Light



Vastu Complied Planning



Termite Treatment



LAYOUT PLAN



SOCIETY ROAD

SOCIETY ROAD

SOCIETY ROAD

12.00 MT WIDE ROAD

SUB STATION

CLUB HOUSE

GARDEN

CHILDREN PLAY AREA

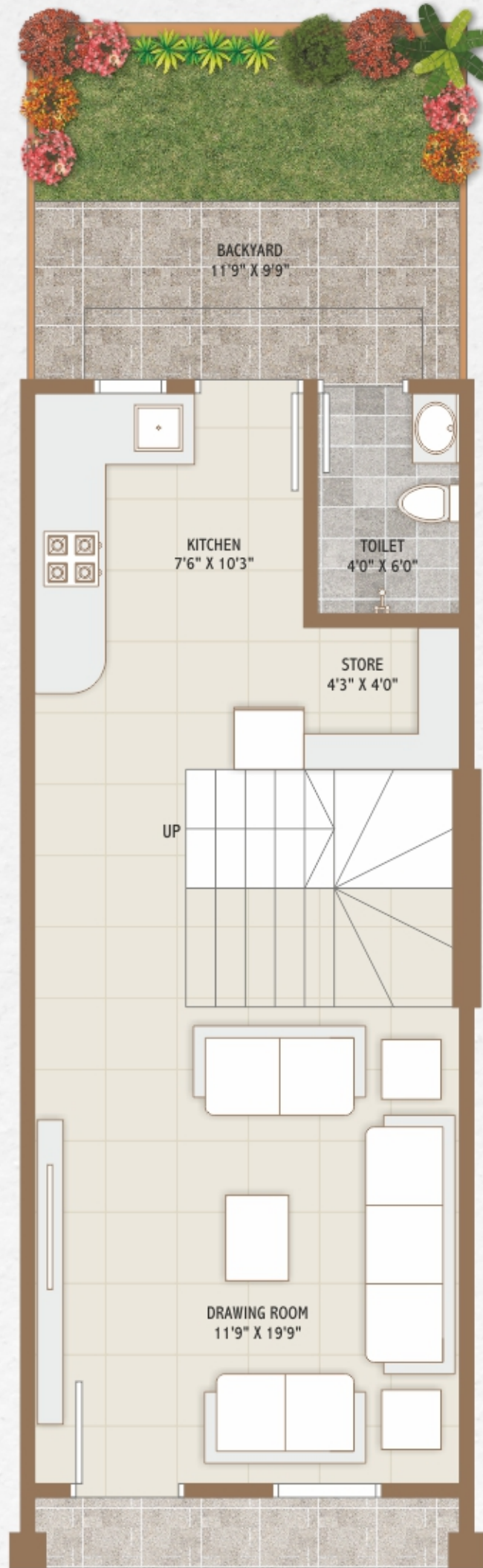
ENTRY

SEC. CABIN

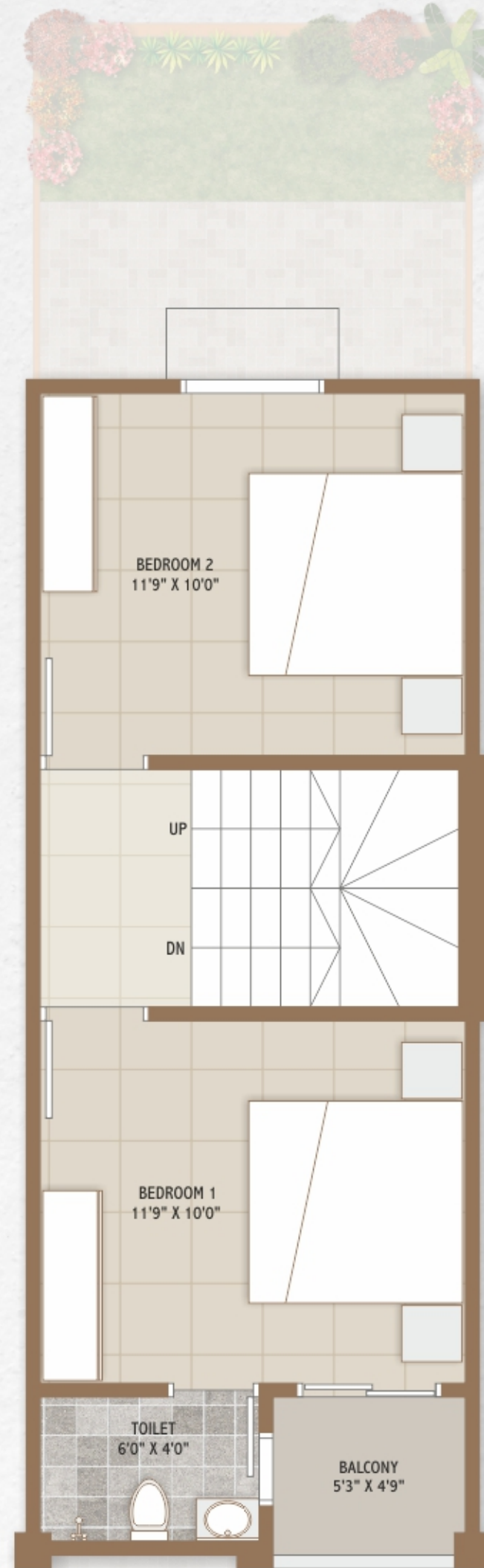


TYPE - A

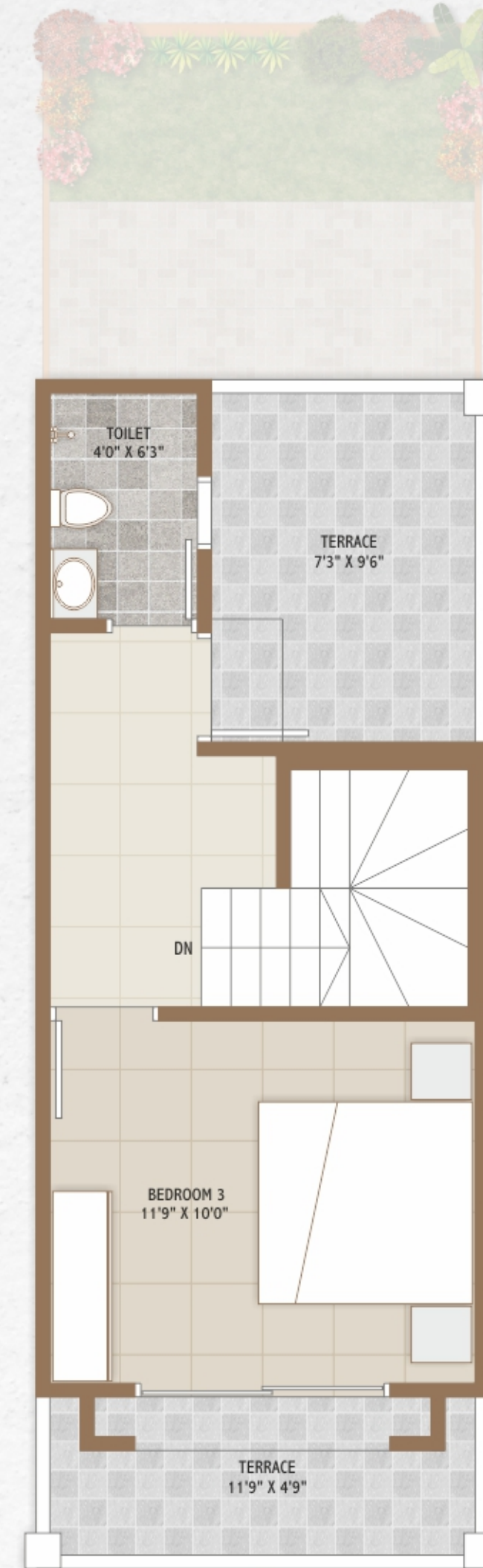
GROUND FLOOR



FIRST FLOOR



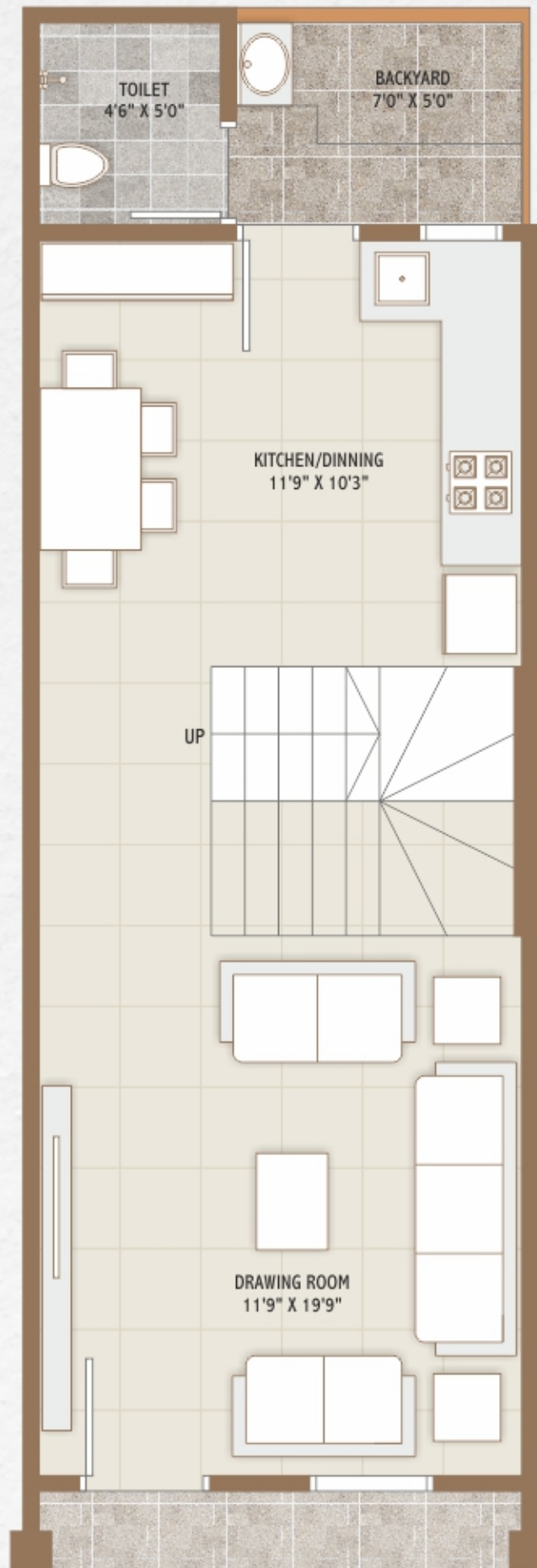
SECOND FLOOR



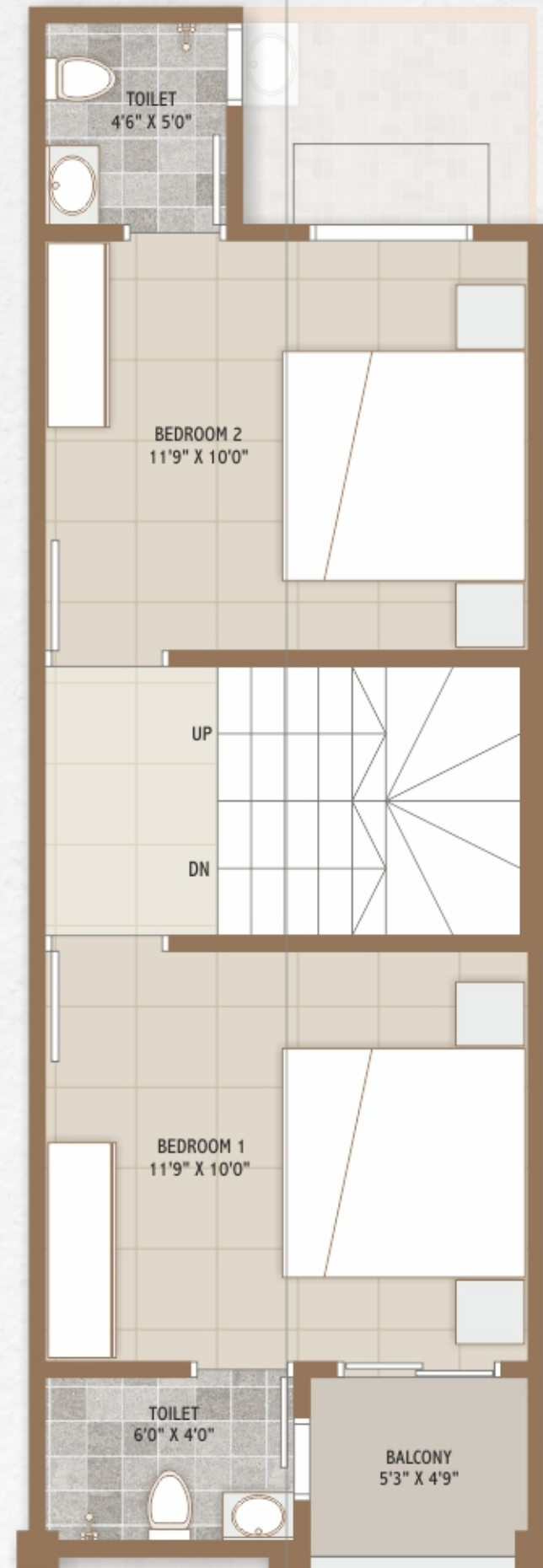


TYPE - B

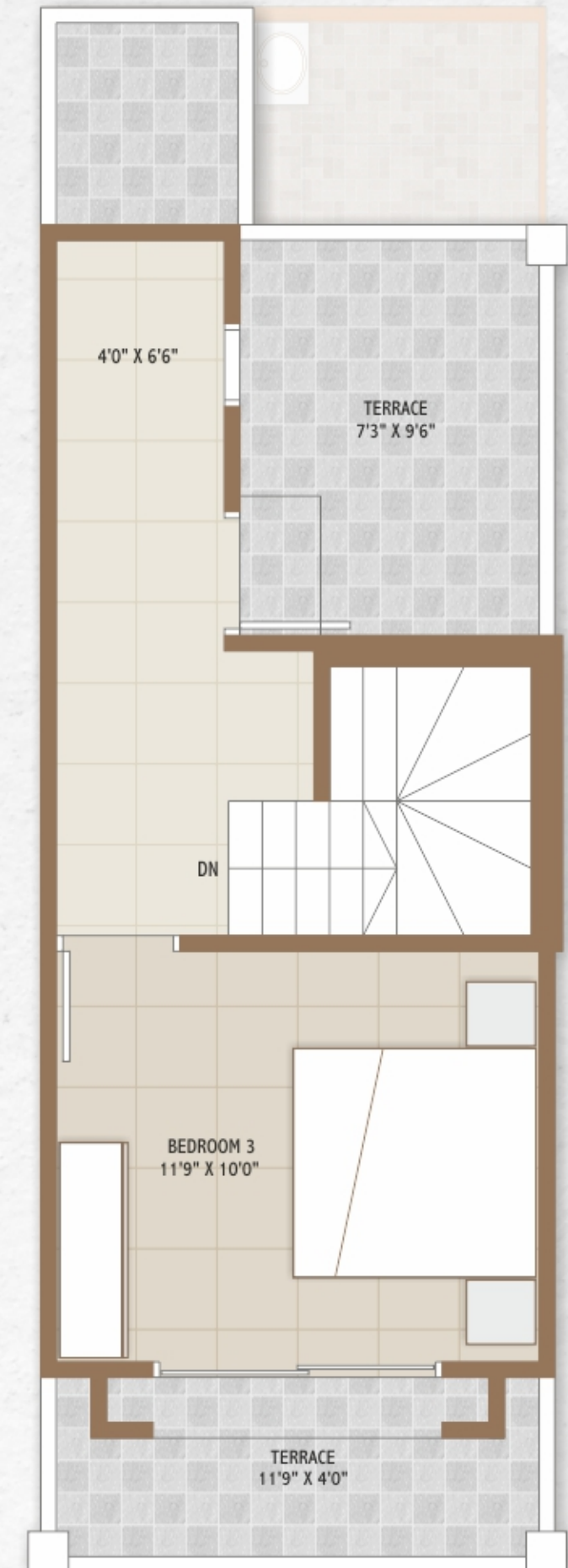
GROUND FLOOR



FIRST FLOOR



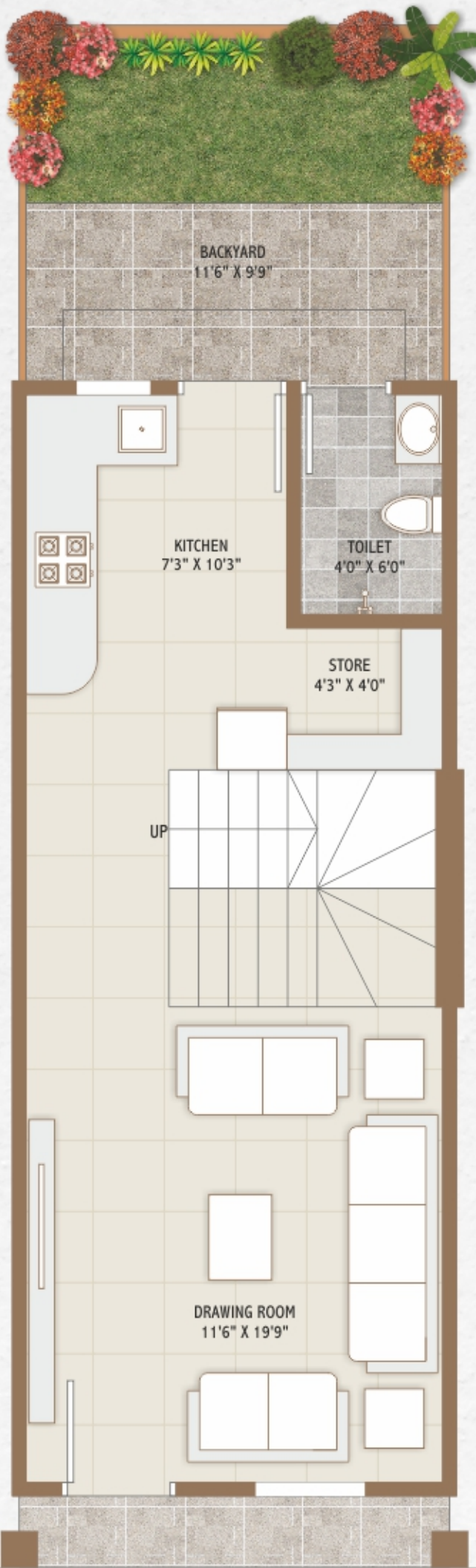
SECOND FLOOR



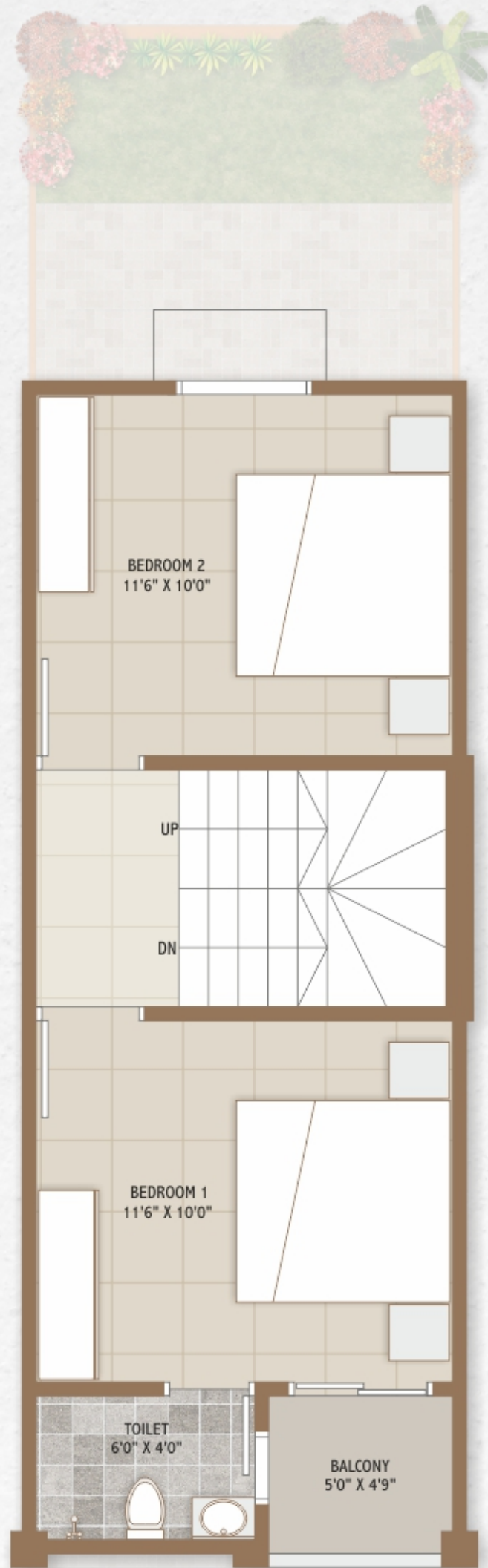


TYPE - C

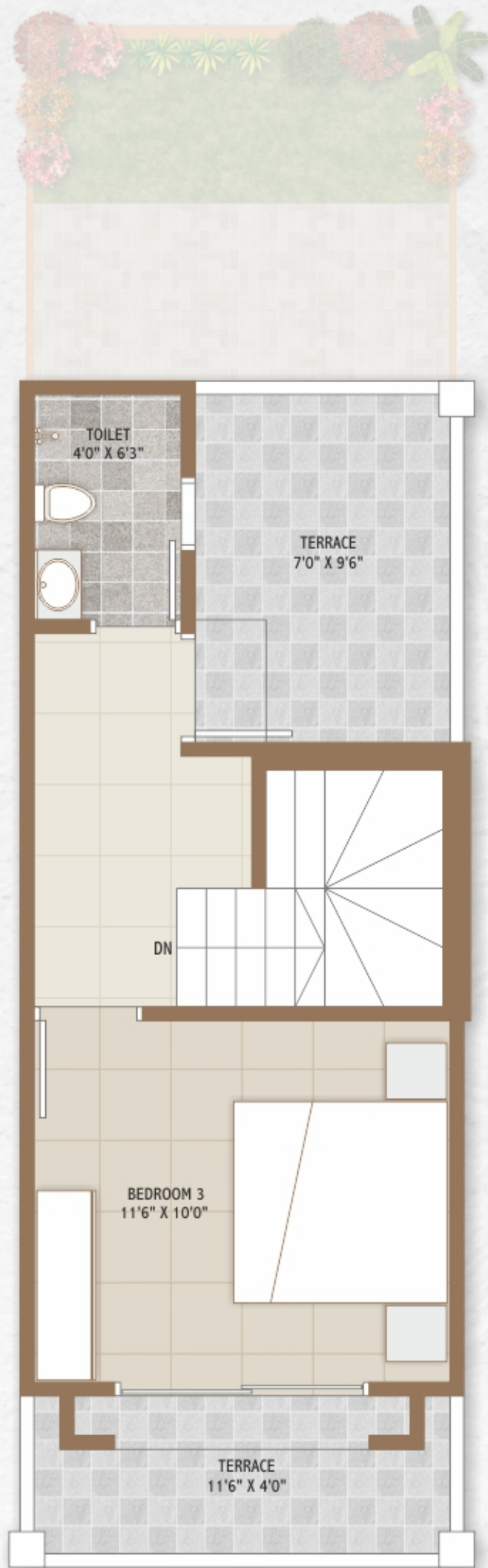
GROUND FLOOR



FIRST FLOOR



SECOND FLOOR





મેપલ ૩

— બંગ્લોઝ —

3 BHK લક્ઝરીયસ બંગ્લોઝ



Keep pace with life **happily and lavishly**



SPECIFICATION

STRUCTURE



R.C.C frame structure.

WALL FINISH



Internal smooth finish plaster with 2 coats putty.
External double coated cement plaster with acrylic paint.

DOORS & WINDOWS



Decorative laminated doors with wooden frame.
Powder coated aluminum frame sliding windows with clear glass.

FLOORING



Vitrified flooring in all rooms, granite in stairs with SS railing.

KITCHEN



Premium quality granite platform with SS sink & glazed tiles up to lintel level.

BATH



Ceramic wall tiles up to lintel level & flooring.
Premium quality sanitary ware & fittings in all toilets.

ELECTRIFICATION



Single phase concealed copper wiring with adequate points.

Terms & Conditions

- All the architectural and interior images in the brochure are merely simulated Interpretations using computer graphics to enhance the customer's understanding and are not factual images.
- The colour and general appearance of the flooring and wall tiles, sanitary ware & fitting walls, ceilings, windows, doors, internal roads, trees, shrubbery etc. shown in the simulated computer graphics images are taken from the object libraries for the purpose of presentation and prospective buyers of the concerned property are advised to refer to the constructor specifications.
- Additional amenities and or utilities not mentioned or shown in the brochure but may be required as per the law should be deemed to be forming part of the project by the purchaser.
- All rights reserved with the developers to make any changes in the project as deemed necessary and all the members shall abide by such changes.
- GST, Stamp duty, registration charges, or any other charges and taxes as & when levied by government or any of its body shall be borne by purchaser/buyer/legal possession holder.
- This brochure is not to be treated as part of the legal document and is for an easy display of the project.
- Subject to Ahmedabad Jurisdiction only.
- The Brochure is for restricted private circulation only and is not to be considered as a legal document with obligations for specific performance. It is meant for the purpose of conceptual presentation only.



Scan for Brochure



NEAR BY CONNECTIVITY

LAMBHA LAKE	- 0.3 km.
LAMBHA TEMPLE	- 0.5 km.
GITA HIGH SCHOOL	- 1.0 km.
LAMBHA SKIN HOSPITAL	- 1.2 km.
RP VASANI SCHOOL	- 1.3 km.
SP RING ROAD	- 2.2 km.
ASLALI CIRCLE	- 3.4 km.



Scan for location

Site: **Maple 3 Bungalows**, Nr. Lambha Lake
B/s. Aditya Bungalows, Lambha
Ahmedabad-382405.

RERA: PR/GJ/AHMEDABAD/DASKROI/AUDA/RAA11298/020323

Website: www.gujrerar1.gujarat.gov.in



Project By



Developer

JANAK PROCCON

Call: 90816 04666 | www.mapledeveloper.in

Architect

Jigar Panchal Architects