

TODAY
GLOBAL DEVELOPERS



Maha RERA Nos. P52000020292, P52000048037, P52000021559
available at www.maharera.mahaonline.gov.in



Site Address: Next to Reliance Petrol Pump, Upper Kharghar, Navi Mumbai, Maharashtra - 410 210.
Corporate Address: 1601-1602, 16th Floor, Kesar Solitaire, Plot No.05, Palm Beach Road, Sector-19,
Sanpada, Navi Mumbai, Maharashtra - 400705.

Disclaimer: The Plans, Specifications, Images And Other Details Herein Are Only Indicative And The Developer/owner Reserve Their Rights To Change Any Or All Of These In The Interest Of The Development. This Printed Material Does Not Constitute An Offer And/or Contract Of Any Type Between The Developer/owner And The Recipient. The Purchases Lessee Of This Development Shall Be Governed By The Terms And Conditions Of The Agreement For Sale/lease Entered Into Between Parties And No Details Mentioned In This Printed Material Shall In Anyway Govern Such Transaction.

Live Among the Clouds



CODENAME
CLOUD CITY
KHARGHAR

2 & 3 BHK Sky-Deck Residences







A World Where Happiness Elevates to Excellence



Delivering success for two decades, we at Today Global have realized that happiness is the only outcome when we build a home with passion and precision. You know happiness has taken its perfect shape, when you see smiling faces of your customers.

With an illustrious 20 year legacy of beautifying Navi Mumbai's skyline, Today Global has firmly established itself as a leading name in the real estate sector. The successful journey was traversed with the visionary Managing Director Bhadresh Shah at the helm. He began with a seed capital of only ₹50 lakhs and now, the group has reached a stage where the annual turnover is ₹200 crore.

Today, with the exceptional leadership and unwavering commitment of the team, the group is touching the new heights of excellence and trust from all.

A Legacy Of Excellence, A World Of Magnificence

DECADES OF EXPERIENCE

2+

DECADES OF DEVELOPING ICONIC PROJECTS

HAPPY FAMILIES

2200+

HAPPY FAMILIES LIVING IN OUR LANDMARKS

ONGOING PROJECTS

4+

ONGOING PROJECTS IN THE PIPELINE

COMPLETED PROJECTS

30+

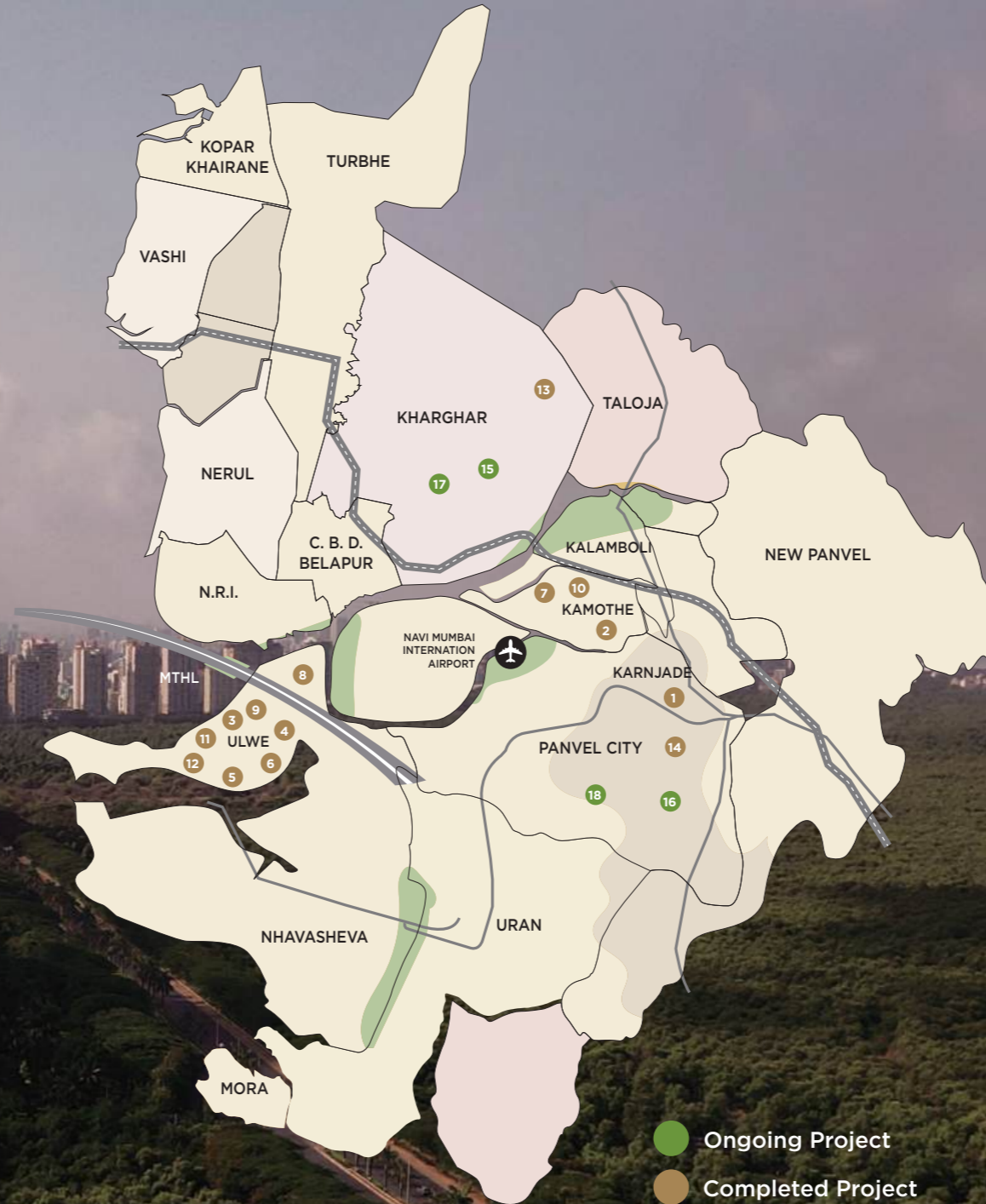
PROJECTS DELIVERED SUCCESSFULLY



Promises Fulfilled, Happiness Delivered



Our Completed & Ongoing Landmarks



COMPLETED PROJECTS

- 1 **Today Avenue**
Karanjade - Navi Mumbai
- 2 **Today Shivam**
Kamothe - Navi Mumbai
- 3 **Paradise**
Ulwe - Navi Mumbai
- 4 **Grande Vista**
Ulwe - Navi Mumbai
- 5 **Ganesham**
Ulwe - Navi Mumbai
- 6 **Elite**
Ulwe - Navi Mumbai
- 7 **Imperia**
Kamothe - Navi Mumbai
- 8 **Shree Smaran**
Ulwe - Navi Mumbai
- 9 **Callisto**
Ulwe - Navi Mumbai
- 10 **Saheba**
Kamothe - Navi Mumbai
- 11 **Genesis**
Ulwe - Navi Mumbai
- 12 **Euphoria**
Ulwe - Navi Mumbai
- 13 **Anandam Phase 1**
Kharghar
- 14 **Utsav City**
Panvel, Navi Mumbai

ONGOING PROJECTS

- 15 **Codename Cloud City**
Kharghar - Navi Mumbai
- 16 **Aamod**
Panvel - Navi Mumbai
- 17 **Mangalam**
Upper Kharghar - Navi Mumbai
- 18 **Codename Gold Rush**
Palaspe Phata - Panvel

A Blissful Location Reaching the World at Ease



Well-Connected Address with
Fast-Developing Infrastructure



D.Y. PATIL STADIUM



CLOSE TO UPCOMING BKC 2
GENERATING THOUSANDS OF JOBS



ENTERTAINMENT & SHOPPING WITH
MALLS, MULTIPLEXES, SUPERMARKETS



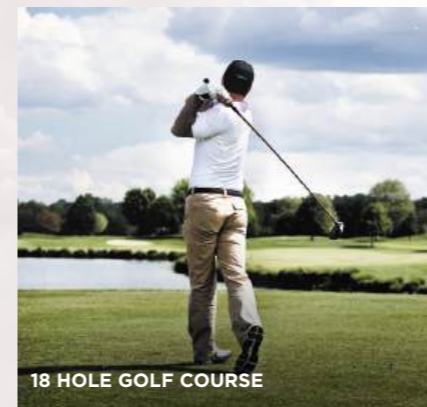
PROXIMITY TO UPCOMING 127 KM
VIRAR-ALIBAUG CORRIDOR



MUMBAI TRANS-HARBOUR LINK



KHARGHAR-TURBHE TWIN TUNNEL



18 HOLE GOLF COURSE



UPCOMING NAVI MUMBAI
INTERNATIONAL AIRPORT



11.1 KM METRO LINE FROM PENDHAR TO BELAPUR
JUST 10 MINS AWAY FROM THE PROJECT



Representational Image

A World Elevating Your Lifestyle above the Extraordinary



Higher-Floor Residences with Sky-Decks

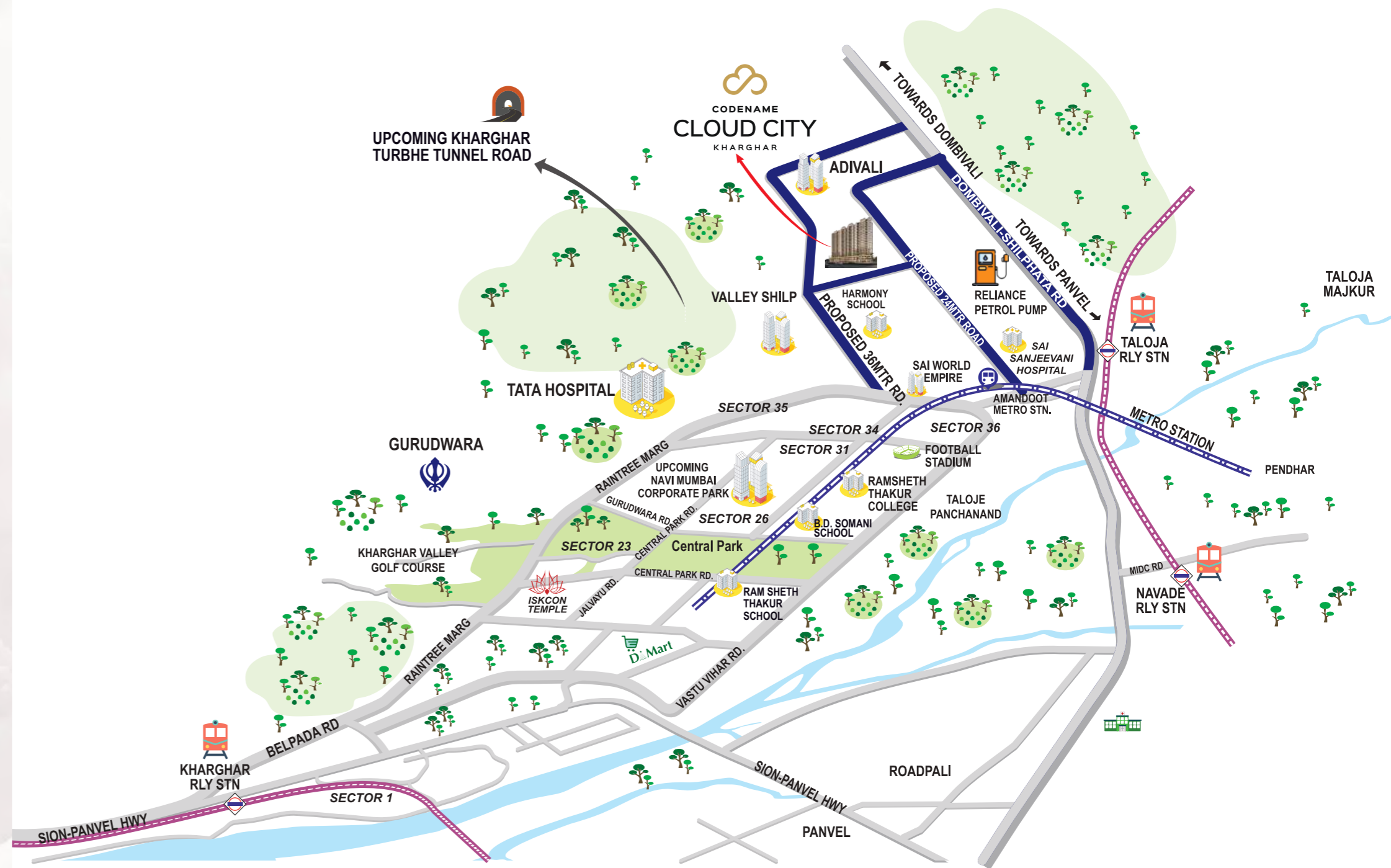
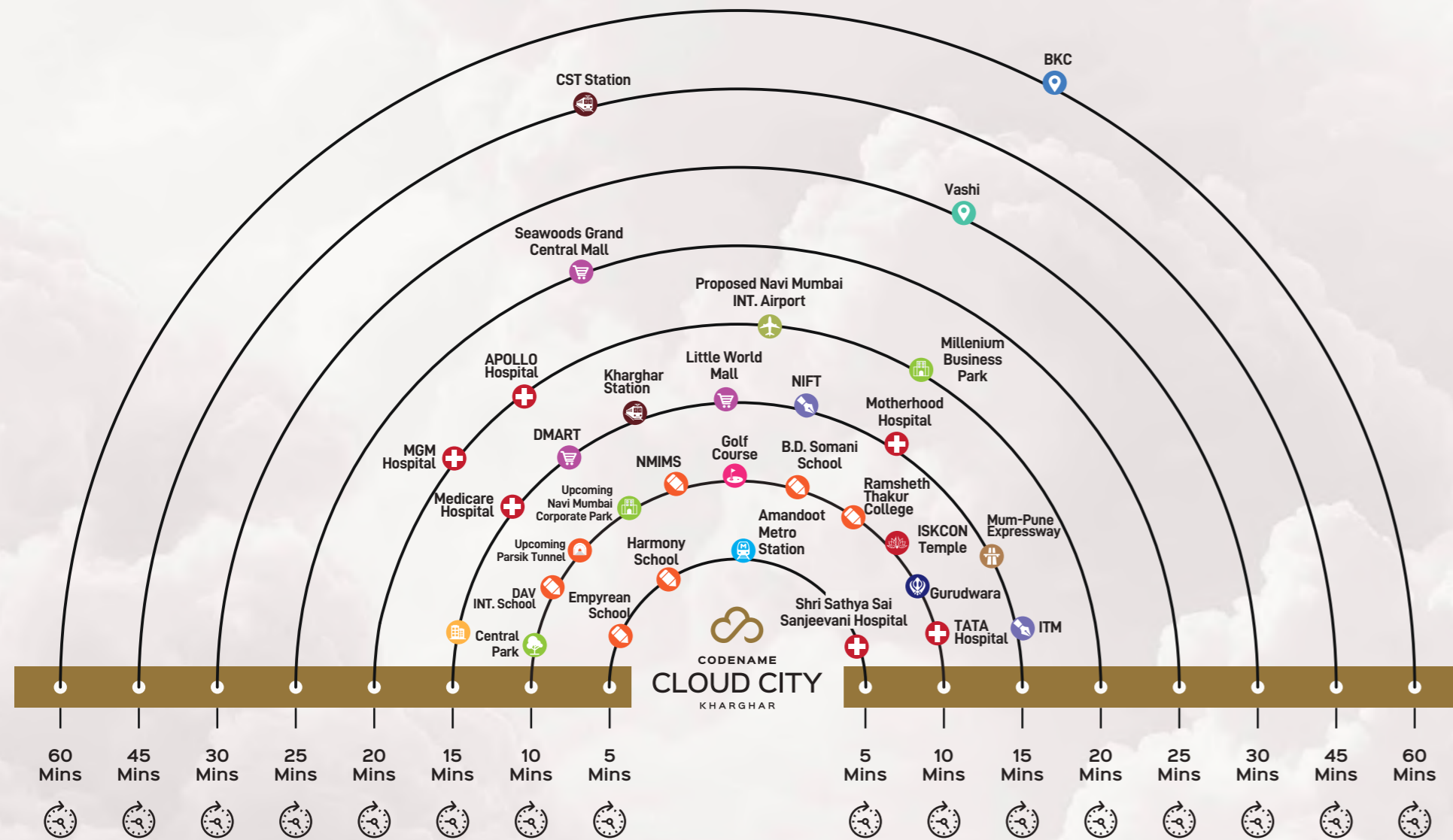
Welcome to Codename Cloud City, where every day feels like a retreat in the clouds. Experience the luxury of 2 and 3 BHK skydeck premium homes with stunning hill views. Enjoy 40+ lifestyle amenities, from podium to rooftop, designed to elevate your living experience to new heights.



CODENAME
CLOUD CITY
KHARGHAR

Connect To Real Conveniences In Minutes

Location Highlights



(Approximate Distances as Per Google)



Artist's Impression

The City of Panoramic Vistas & Premium Life



Seventh Heaven Living
Higher-Floor Premium
Luxury Spaces



Sky-Scaling Landmark
A 9-acre Magnificent
Township



Cloud Nine Views
Mesmerizing Kharghar
Hill Vistas



Top-of-the-world Lifestyle
40+ Health &
Entertainment Avenues



Sky-High Indulgences
Unparalleled Sky-Luxuries
on Rooftop



Sky Sync Homes
Mood-Inspired Smart Home
Automation

Top-of-the-World Lifestyle



40+ Podium & Rooftop Lifestyle Amenities
spread across 30,000 Sq. Ft. Indulge in a cloud nine lifestyle where your
everyday is spent surrounded by luxury and beauty.

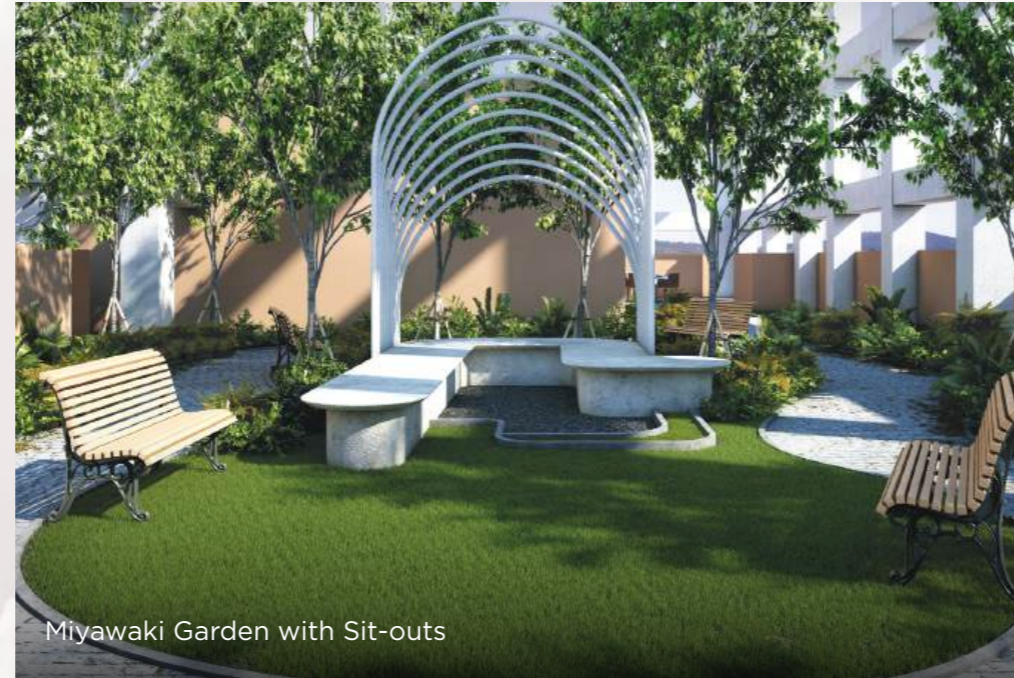
From wellness to recreation, leisure to fitness,
the 40+ thoughtfully crafted amenities are nothing short of extraordinary.



Indulge in Luxuries of Comfort & Peace



Podium & Rooftop Lifestyle Amenities



Miyawaki Garden with Sit-outs



Rejuvenating Swimming Pool



Play Area with Surveillance Access and Kids Tracking



Air-conditioned Sky Cafe and Lounge



Sky Lounge for Senior Citizens



Lush Party Lawn with Sit-outs



Multipurpose Sports Court



Unleash the Best of Health & Recreation



Lavish Community Living with World-class Clubhouse Features
Rise above the ordinary with an elite club-life experience at Cloud City.
With world-class avenues to celebrate your being,
every amenity designed here will take your to the journey of a higher-order life.

Live Life in Unparalleled Privileges



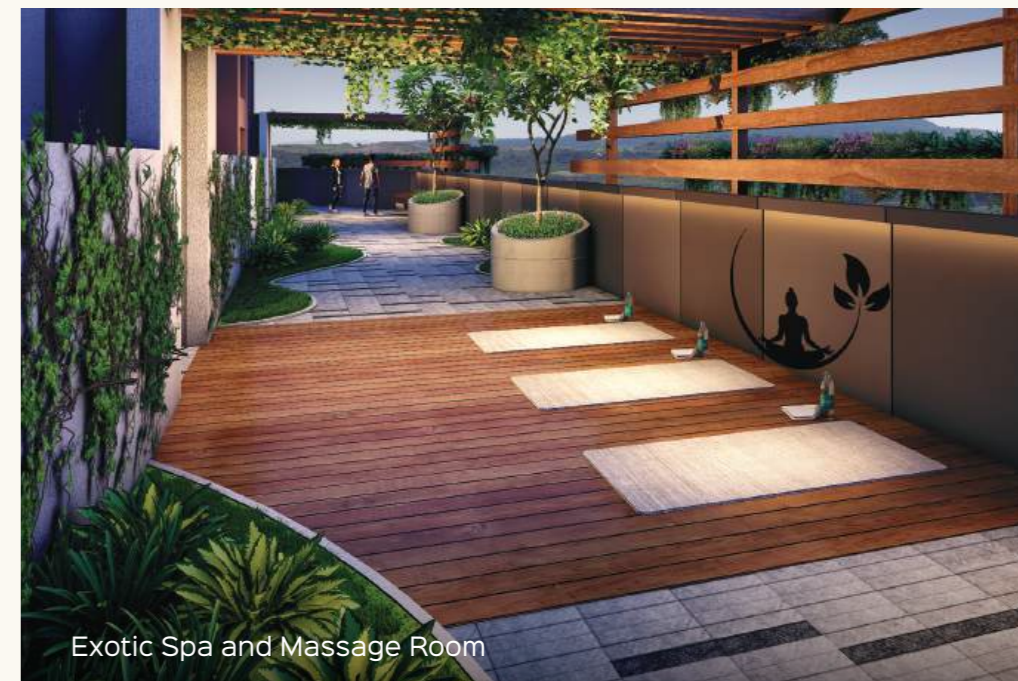
World-Class Club-Life Indulgences



World-class Art and Culture Academy



Business Centre cum Library



Exotic Spa and Massage Room



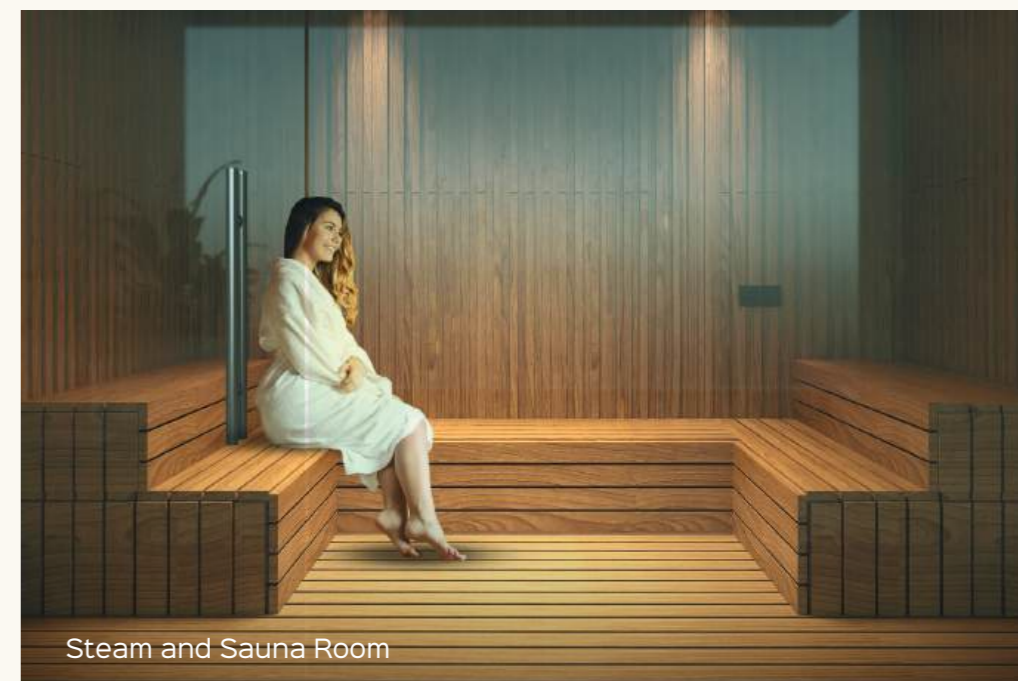
World-class Fitness Centre



Lavish Banquet Hall



Mini-theatre with DTH



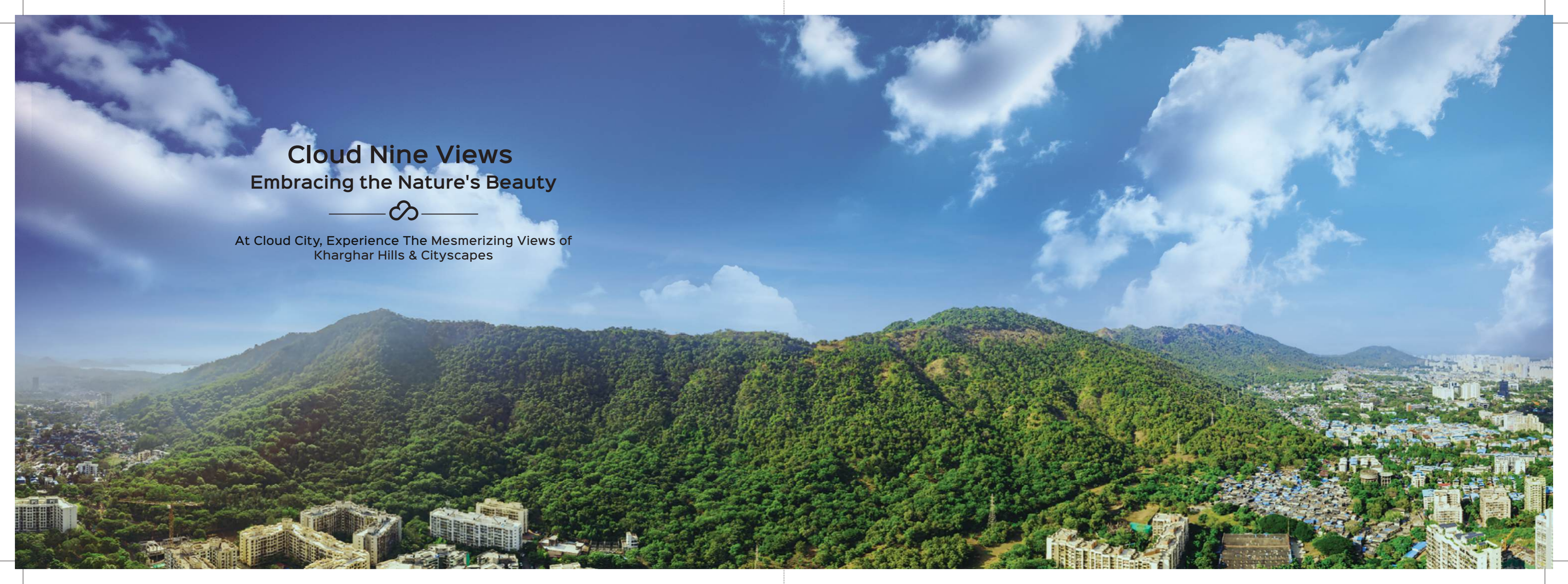
Steam and Sauna Room

Cloud Nine Views

Embracing the Nature's Beauty



At Cloud City, Experience The Mesmerizing Views of
Kharghar Hills & Cityscapes

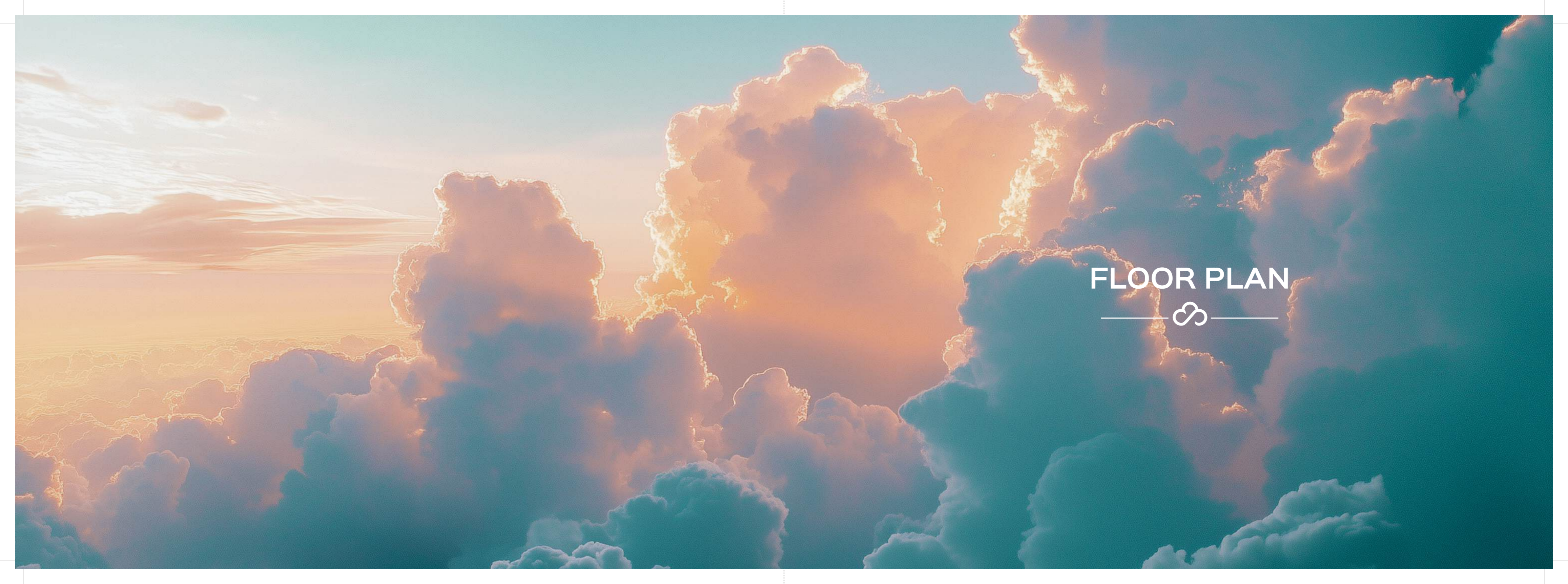


Seventh Heaven Living

Taking Life to the Top



Higher-Floor Residences with Sky-Decks ushering
in unobstructed mountain views



FLOOR PLAN



Building-3 Jodi Flat
1 BHK + 2BHK = 3 BHK- TYPE A



Building-3 Jodi Flat
1 BHK + 2BHK-L = 3 BHK- TYPE B



MASTER PLAN

- Open Amphitheatre
- Lotus Pond
- Mini Theatre
- Pantry
- Changing Room
- Adult Pool
- Kids'pool
- Sculptural Room
- Multi-purpose Room
- Library/ Business Lounge
- Children's Care Facility
- Sand Pit
- Cafe with Kitchen
- Sky Deck
- Hobby Room
- Unisex Salon
- Outdoor Gym
- Gym
- Indoor Games
- Meditation Corner
- Multi-purpose Court
- Kids Soft Play Area
- Sandpit
- Kids' Play Area
- Open Gym
- Gym
- Hard Turf
- Sky Deck
- Adult Pool
- Kids' Pool
- Amphitheatre Seating with Pergola on Top
- Kitchen
- Multi-purpose Court
- Business Lounge
- Changing Room
- Sauna



Amenity Floor Plan Building 1&2



Podium Level Amenity Floor Plan Bldg 3A-3B (3rd floor)

WING A

- 01 Seating Planter
- 02 Sky Deck
- 03 Multi-purpose Room
- 04 Business Lounge
- 05 Hobby Room
- 06 Cafe
- 07 Kitchen
- 08 Amphitheatre
- 09 Amphitheatre Seating With Pergola On Top
- 10 Ladies Changing Room
- 11 Gents Changing Room
- 12 Steam & Sauna
- 13 Pool
- 14 Kids Pool

WING B

- 01 Hard Turf
- 02 Open Gym
- 03 Sky Deck
- 04 Sandpit
- 05 Kids Play Area
- 06 Gym



A Wing

SALEABLE AREA- RESIDENTIAL BUILDING -03 A					
	FLAT NO	RERA CARPET AREA	BALCONY	SERVICE SLAB	TOTAL USABLE CARPET
1BHK-TYPE-B	3	382	220	20	622
2BHK - TYPE C	02, 04	548	333	21	902

B Wing

SALEABLE AREA- RESIDENTIAL BUILDING -03					
	FLAT NO	RERA CARPET AREA SQ.FT.	BALCONY SQ.FT	SERVICE SLAB SQ.FT	TOTAL USABLE CARPET SQ.FT.
1BHK-TYPE-B	0 3	382	220	20	622
2BHK - TYPE C	05, 04	548	333	21	902
2BHK - TYPE D	0 2	575	316	0	891

Typical Floor Plan
Building 2 B



Refuge Floor Plan
Building 2 B



Typical Floor Plan



SALEABLE AREA- RESIDENTIAL				
BUILDING - 3 WING A				
	RERA CARRPET AREA	BALCONY	SERVICE SLAB	TOTAL USABLE CARPET
1 BHK	383	26	20	429
2 BHK - TYPE A	574	71	0	645
2 BHK - TYPE B	548	64	20	632



SALEABLE AREA- RESIDENTIAL				
BUILDING - 3 WING B				
	RERA CARRPET AREA	BALCONY	SERVICE SLAB	TOTAL USABLE CARPET
1 BHK	383	26	20	429
2 BHK - TYPE A	574	71	0	645
2 BHK - TYPE B	548	64	20	632

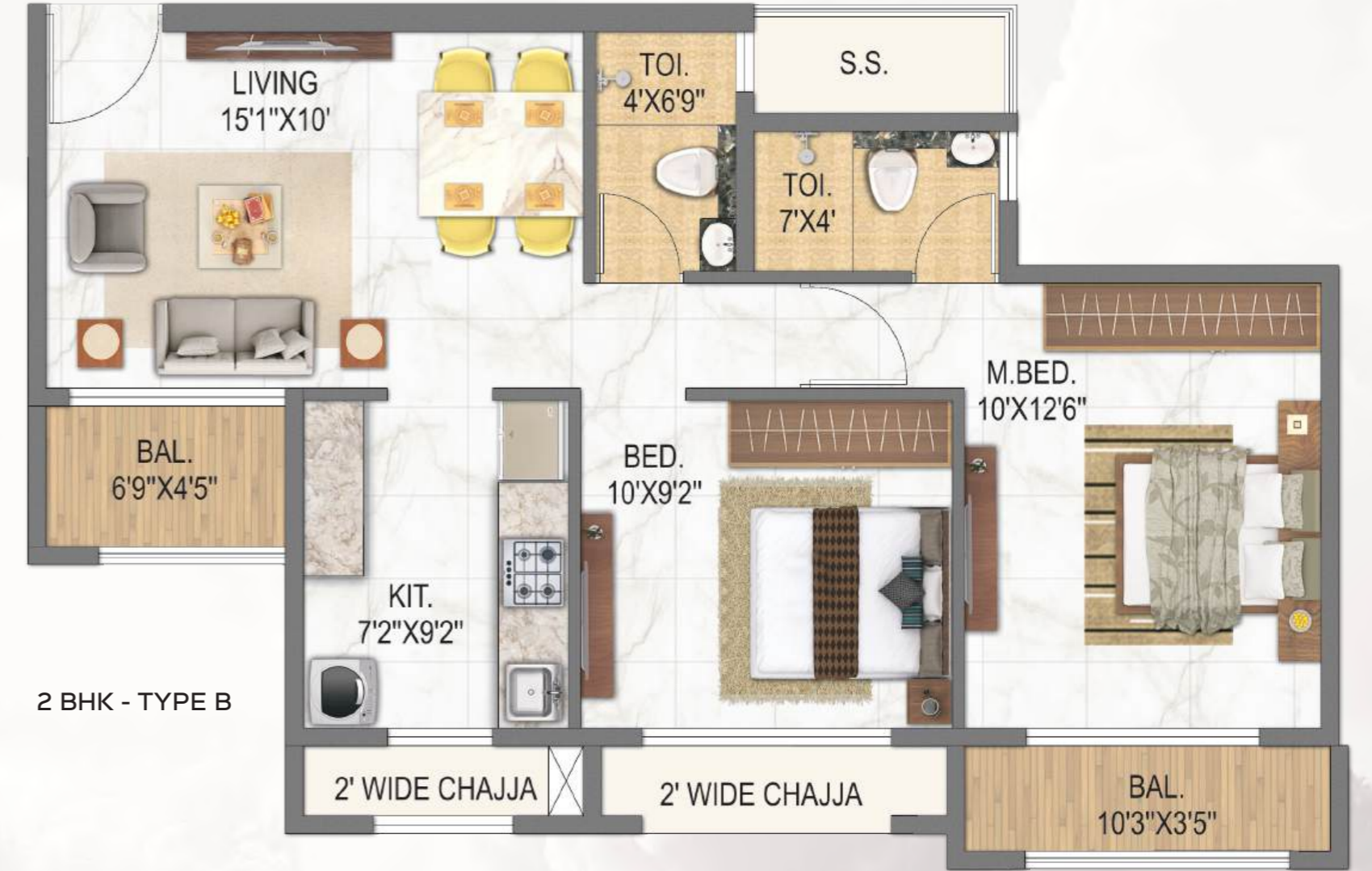
Area = 429 SQ.FT.



1 BHK - TYPE A

SALEABLE AREA- RESIDENTIAL				
BUILDING - 3 WING A & B				
	RERA CARRPET AREA	BALCONY	SERVICE SLAB	TOTAL USABLE CARPET
1 BHK	383	26	20	429

Area = 632 SQ.FT.



2 BHK - TYPE B

SALEABLE AREA- RESIDENTIAL				
BUILDING - 3 WING A & B				
	RERA CARRPET AREA	BALCONY	SERVICE SLAB	TOTAL USABLE CARPET
2 BHK- TYPE B	548	64	20	632

Area = 645 SQ.FT.



2 BHK - TYPE A

SALEABLE AREA- RESIDENTIAL				
BUILDING - 3 WING A & B				
	RERA CARRPET AREA	BALCONY	SERVICE SLAB	TOTAL USABLE CARPET
2 BHK- TYPE A	574	71	0	645

Area = 1074 SQ.FT.



3 BHKJODI FLAT

SALEABLE AREA- RESIDENTIAL				
BUILDING - 3 WING A & B				
	RERA CARRPET AREA	BALCONY	SERVICE SLAB	TOTAL USABLE CARPET
3 BHK - JODI FLAT	957	97	20	1074

Area = 429 SQ.FT.

Area = 632 SQ.FT.

Area = 1061 SQ.FT.



1 BHK - TYPE A

2 BHK - TYPE B

3 BHK JODI FLAT

SALEABLE AREA- RESIDENTIAL				
BUILDING - 3 WING A & B				
	RERA CARRPET AREA	BALCONY	SERVICE SLAB	TOTAL USABLE CARPET
1 BHK	383	26	20	429
2 BHK - TYPE B	548	64	20	632

SALEABLE AREA- RESIDENTIAL				
BUILDING - 3 WING A & B				
	RERA CARRPET AREA	BALCONY	SERVICE SLAB	TOTAL USABLE CARPET
3 BHK - JODI FLAT	937	90	40	1061

Area = 429 SQ.FT.



1 BHK - TYPE A

Area = 645 SQ.FT.



2 BHK - TYPE A

Area = 1264 SQ.FT.



5 BHKJODI FLAT

SALEABLE AREA- RESIDENTIAL				
BUILDING - 3 WING A & B				
CONFIGURATION	RERA CARRPET AREA	BALCONY	SERVICE SLAB	TOTAL USABLE CARPET
1 BHK	383	26	20	429
2 BHK - TYPE A	574	71	0	645

SALEABLE AREA- RESIDENTIAL				
BUILDING - 3 WING A & B				
	RERA CARRPET AREA	BALCONY	SERVICE SLAB	TOTAL USABLE CARPET
5 BHK - JODI FLAT	1096	128	40	1264

Area = 632 SQ.FT.



Area = 632 SQ.FT.

2 BHK - TYPE B

Building-3 Jodi Flat
 2 BHK + 2BHK = 4 BHK- TYPE B
 2+2 = 1264 SQ. FT. WITH 3 DECKS



SALEABLE AREA- RESIDENTIAL

BUILDING - 3 WING A & B

	RERA CARRPET AREA	BALCONY	SERVICE SLAB	TOTAL USABLE CARPET
2 BHK - TYPE B	548	64	20	632
2 BHK - TYPE B	548	64	20	632

TYPICAL FLOOR - JODI FLAT



