



COMMUNITY. CULTURE. CLASS.

# A CULTURE BUILT FOR TOMORROW

Culture is more than just a reflection of the past; it is a cornerstone of our vision for the future. It brings wisdom and meaning to lives & cultivates environments where all feel a deep sense of belonging and pride.

We take this to heart in making of spaces that feel like home.





COMMUNITY.  
CULTURE.  
CLAS.S.

# INTRODUCING A CULTURE OF EXCELLENCE





BASIL  
VRUNDAVAN

—  
2 & 3 BHK LUXURIOUS HOMES

Here, excellence isn't a mere aspiration—it's ingrained in every brick & every detail.

Here, it's not just about homes; it's about cultivating experiences that redefine the meaning of living well. From the elegance of architectural designs to the warmth of the community spirit, we set the bar high.

Presenting **Basil Vrundavan**, your **community of culture & class!**





SWIMMING POOL



MULTIPURPOSE HALL

A CULTURE  
OF GRAND  
EXPERIENCES





YOGA & MEDITTTION AREA



PARTY LAWN

Step into a world, designed to elevate every aspect of your lifestyle, making every other day seem extraordinary. We believe in more than a just physical spaces; we believe in crafting a complete and enriching living experience. Here, each amenity serves as a pillar, meticulously chosen to enhance your lifestyle. Every detail has been crafted to ensure that your time here is nothing short of exceptional.



PERGOLA WITH SENIOR CITIZEN SIT-OUT



INDOOR GYM

A CULTURE  
OF FUN &  
GROWING UP





CHILDREN'S PLAY AREA



INDOOR GAMES

Experience the enriching lifestyle at Keystone Basil Vrundavan, where you can unwind under pergolas, relax in cozy sitting areas, stay fit in the gym, and enjoy engaging indoor games. Discover a place that enhances your everyday living with thoughtful amenities designed for your comfort and enjoyment.

# A CULTURE OF LUXURY LIFESTYLE

Embrace a truly distinctive style with our signature touch! Immerse yourself in a Resort-Themed Clubhouse that transports you to a perpetual holiday ambiance. Revel in an extensive array of outdoor amenities strategically arranged in a sprawling area. This Clubhouse serves as an ultimate retreat, accessible every day just for you. Take a stroll in and savor the journey!



PARTY AREA  
(ARTIFICIAL LAWN)



CHILDREN  
PLAY AREA



INDOOR  
GYM



SENIOR CITIZEN  
AREA



TEMPLE





WALKING TRACK



SWIMMING POOL WITH INFINITY EDGE



BABY POOL



ZUMBA HALL



DIRECTIONAL SIGNAGE



YOGA MEDITATION HALL



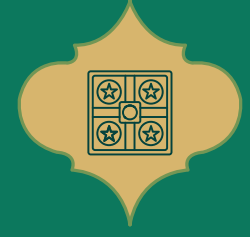
MULTIPURPOSE HALL WITH PANTRY



TABLE TENNIS



CONNECTING ARBOUR



INDOOR GAMES



MULTIPURPOSE COURT



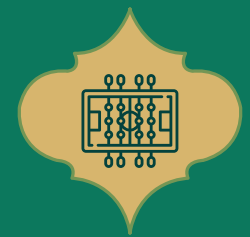
STEAM ROOM



BUFFET AREA WITH PERGOLA



POOL TABLE



FOOSBALL TABLE



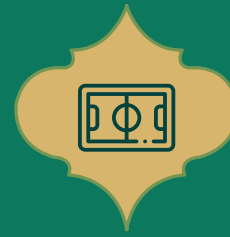
SUN SET POINT



OUTDOOR SHOWER



AMPHI SEATING



FLOOR GAME



STAGE



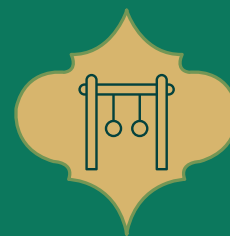
CABANA



TODDLER'S PLAY AREA



CLIMBING WALL



OUT DOOR GYM



LOUNGE SEATING



CHIT-CHAT CORNER



TOILET/ CHANGING ROOM

fold

to be opened





# CULTURE AS A CORNERSTONE FOR VRUNDAVAN

A home is every heart's desire. The environment in which this home is made stands as a foundation. A world to explore, experience, and express the many joys of life.

Vrundavan is a home balancing this contemporary lifestyle but rooted in culture. This harmonious fusion is a path to your home, your cultural cosmopolitan community.





COMFORT.  
ELEGANCE.  
PEACEFUL.

# SPECIFICATIONS

## STRUCTURE & MASONRY

- Earthquake-resistant RCC Frame structure
- Construction in Mivan Technology
- High-Quality finishing with Aluform technology for construction
- External wall texture finish
- Internal wall & ceiling in gypsum finish

## ELECTRICAL FITTINGS

- Electrical Concealed copper wiring with modular switches and adequate points in all rooms
- Electrical provision for split A/C in master bedroom & Living
- Telephone point in living room and master bedroom
- Ceiling Fan points in all rooms
- TV cable point in living room and Master bedroom
- Provision for electrical exhaust fan in kitchen, toilets
- Video Door Phone Provision
- Electrical point in dry balcony for washing machine
- Inverter point provision at distribution box
- Lights fittings on every terrace and energy-efficient light fixtures for external lighting
- Fire-resistant wires with MCB
- Modular sockets and switches

## GRILLS & RAILINGS

- Oil-painted MS safety grills for Window
- MS railing for terrace

## KITCHEN

- Granite platform with stainless steel sink
- Glazed tiles up to 2 feet above kitchen platform
- Electrical points for microwave, refrigerator, induction cooker & exhaust fan
- Washing machine provision - plumbing and electrical points in dry balcony

## FLOORING

- Vitrified tile flooring in living room, dining, kitchen, bedroom, and passage
- Anti-skid ceramic flooring in terrace, dry terrace, and toilet floors

## DRY BALCONY

- Ceramic tiles dado in dry balcony with provision for water inlet and outlet

## WINDOWS

- High-performance glazing for all habitable rooms
- Granite full frame for all windows
- Sliding 3-track Aluminium powder coated windows with MS safety grills along with mosquito mesh
- 18" X 50" series Aluminium sliding shutter
- Safety grills in all windows

## **PAINTING**

- Asian Apex external paint
  - Acrylic paint for all internal walls
  - Oil paint for MS grills and railing
- 

## **BATHROOM / TOILETS**

- Glazed tile dado up to lintel level in all bathroom
  - Ceramic flooring in all bathrooms
  - CPVC concealed plumbing
  - Jaquar or equivalent bathroom CP fittings
  - Glazed tile dado up to 7 feet level in WC
  - Solar connection for hot water in common Bathrooms
  - CPVC plumbing and sanitary wares
  - Exhaust fan and electrical geyser points
- 

## **DOORS & DOOR FRAMES**

- Attractive main entrance door with premium quality fittings & fixtures
- All room door frames in plywood with decorative flush doors finished with both side laminate
- Bathroom & WC door frame in granite
- Powder coated french door opening for terrace

## **UTILITIES**

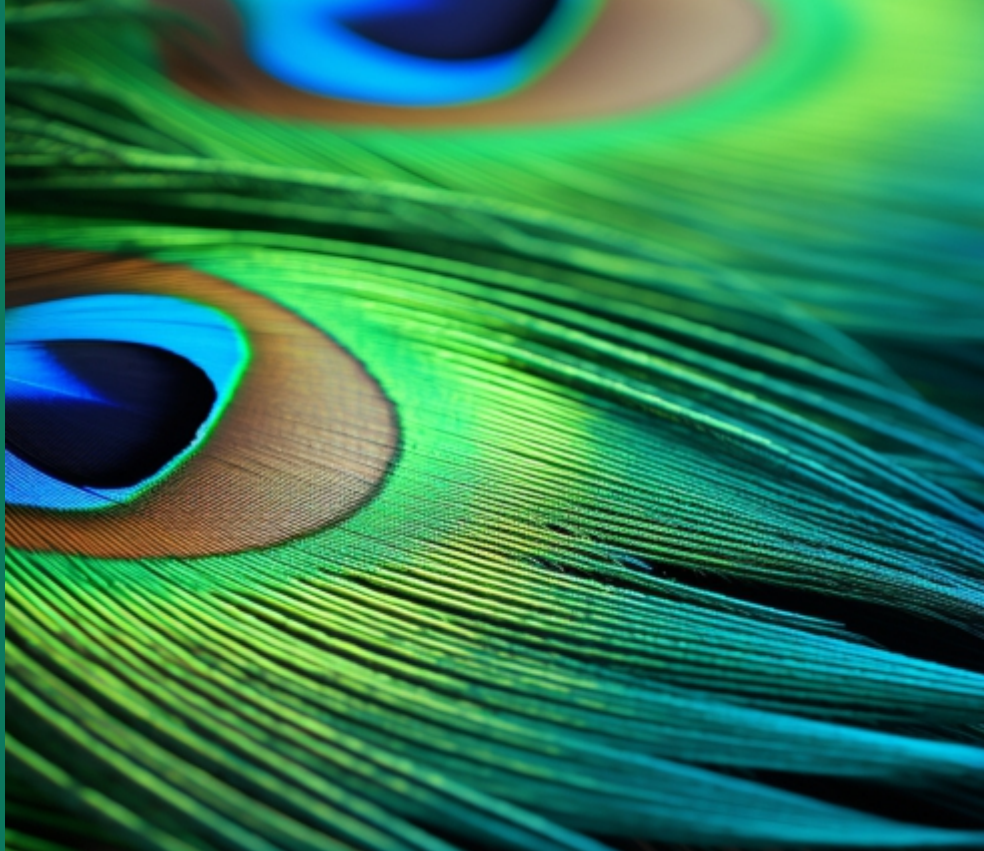
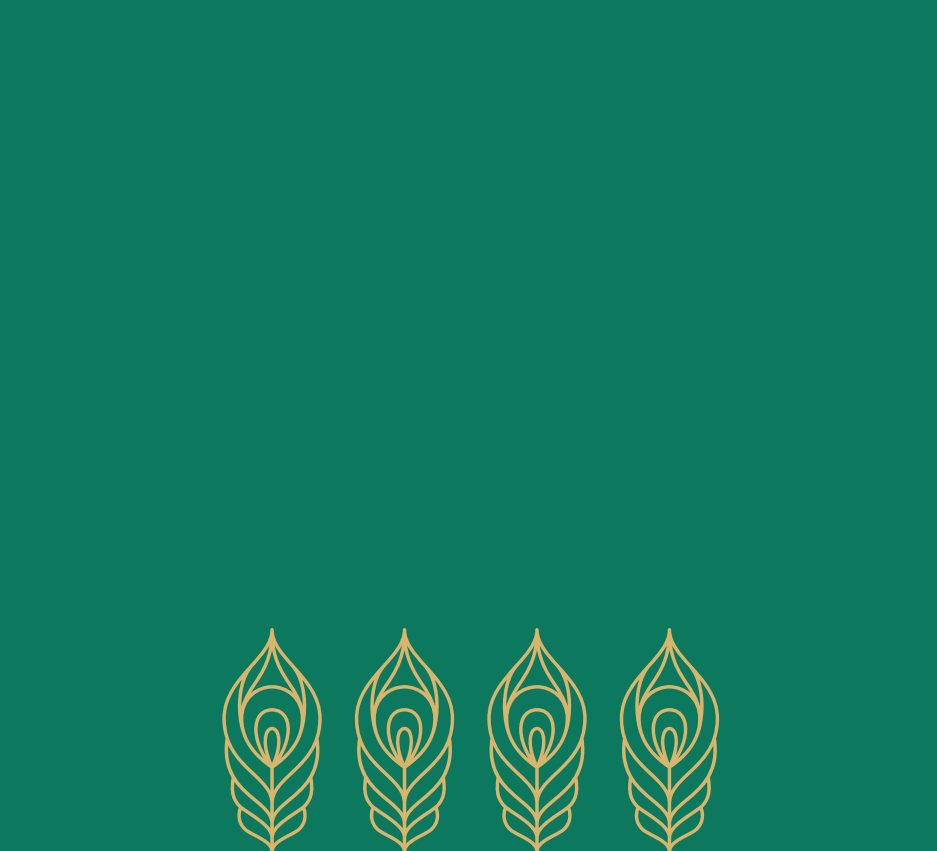
- Entrance Lobby
- Organic Waste Converter
- CCTV Surveillance
- Fire Fighter System
- Generator Backup For Common Areas
- Solar Water / Common lights
- Round The Clock Security
- UGWT & OHWT
- Rainwater Harvesting
- STP
- Exclusive Car Parking Space
- High-Speed Elevators with Power Backup
- Arrangement for Gas Pipe Line
- Attractive Entrance Gate with Security Cabin
- Decorative Entrance Lobby with Sit-out
- Visitors Car Parking
- 24 x 7 Water and Power
- Water RO filter



# VIBRANCY OF THE CULTURE OF AMBEGAON

It is a neighbourhood teeming with life and energy. The location boasts a rich tapestry of experiences waiting to be explored. The local scene with colourful markets, lively music, and bustling cafes, creates an atmosphere unlike any other. Surrounded by picturesque hills and lush greenery, Ambegaon Katraj also provides ample opportunities for outdoor recreation and relaxation. It's undoubtedly a locale that encapsulates the essence of the entire Pune.





CONNECTIVITY.  
ACCESS.  
REACHABILITY.

MAP NOT TO SCALE



# LOCATION MAP

## CONNECTIVITY

Pune Bangalore Highway	1 Km
Katraj Bus Depot	3.3 Km
Sinhagad Road	4.5 Km
Warje	5 Km

## ENTERTAINMENT

Rajiv Gandhi Zoological Park	3 Km
City Pride Cinemas (Abhiruchi Mall)	3.4 Km
Fun Time Multiplex	3.7 Km

## SHOPPING

Star Market	0 Km
Dmart	1.6 Km
Reliance Digital	2.9 Km
Croma	2.9 Km
K. K. Market	5.9 Km

## RESTAURANT

McDonald's	1.7 Km
ANGAN Pure Veg	2.6 Km
Kalyan Bhel - Katraj	2.6 Km
Vedant Hotel	3.7 Km

Vision English Medium School

Swami Na Temp



KK Market

Sinhagad College of Engineering

# DHANKAWADI

Balaji Nagar Chowk

Sinhagad Law College

# AMBEGAON PATHAR

Bharati Hospital

Bharati Vidyapeeth Deemed University

Trimurti Chowk

Tanaji Nagar

Aangan Pure Veg

Kalyan Bhel

Flying Panda Theme Park

Katraj Dairy

Rajiv Gandhi Zoological Park

Mumbai Pune Bypass Rd

D Mart  
McDonald's

Chandrabhaga Nagar Rd

Bharati Vidyapeeth Rd

Croma

Reliance Digital

# KATRAJ

Katraj-Ambegaon Bk Rd

Katraj-Ambegaon Bk Rd

Datta Nagar Chowk

Katraj Chowk

Way to Saswad

## BASIL VRUNDAVAN

Sai Siddhi Chowk

**BASIL SHREEJI**  
CONVENIENCE MEET LUXURY

Katraj Bus Station

Katraj Bus Depot

Datta Nagar Rd

**BASIL CHANDRAKANT**  
RESIDENTIAL & COMMERCIAL

Tukaram Nagar

Dream City

**BASIL SHIVRAJ**

Jay Bhavani Chowk

**BASIL AMORA**  
Reflections of Heaven

Meghsparsh

Vitthal Temple

Shiv Temple

**Govind Basil**  
Pure Living

Shani Temple

Bypass Rd

Bengaluru - Mumbai Hwy

Jambhulwadi Rd

Blue Bay Sport

Jambhulwadi Lake

Datta Mandir

Pune - Satara Rd



ALWAYS MOVING AHEAD

## ALWAYS MOVING AHEAD IS OUR BRAND STORY

The world keeps moving every moment, so we keep moving with time. Our goal is to add a dimension of luxury, comfort, and satisfaction to human life. With this goal, our team keeps on moving ahead. We are very closely connected to our customers to keep ourselves updated and upgraded with their expectations. We also explore infinite possibilities of incorporating the latest technological advancements. Adopting the world-class practices acquired by the pioneers is our passion. We keep on moving with dedication and energy and let others move ahead with us.

**17+** Years Legacy | **15+** Completed Projects

**3000+** Residential & Commercial Units Sold Till Date

**35 Lacs** Sq. Ft. Ongoing & Upcoming constructions

Completed Project



Govind Basil  
@Ambegaon, Pune  
1 & 2 BHK Apartment

Completed Project



Basil Amora  
@Ambegaon, Pune  
1 & 2 BHK Apartment

Completed Project



Basil Shreeji  
@Ambegaon, Pune  
1 & 2 BHK Apartment

Ongoing Project



Basil Mondale @Keshavnagar, Mundhva  
1, 2 & 3 BHK Apartment

Ongoing Project



GSV Vertica @Kharadi, Pune  
Shop, Showroom & Office Spaces

Ongoing Project



Basil Maximus @Punawale  
4, 3, 2.5 & 2 BHK

Ongoing Project



Basil Chandrakant @Ambegaon  
1 & 2 BHK

Upcoming Project



Basil Taljai @Dhankawadi  
2 & 3 BHK

Ongoing Project



Basil Shivraj @Ambegaon  
1 & 2 BHK



ALWAYS MOVING AHEAD

**Call - 70 3022 8000**

Site Address: Sr. No. 55/3/3, Opp. Astonia Royale, Near Mumbai-Banglore Highway,  
Narhe Ambegaon Rd., Pune - 411046



W: basilgroup.co.in | E: vrundavan.sales@basilgroup.co.in | Follow us on: @ f t v w



MahaRERA No.: P52100056440  
<http://maharera.mahaonline.gov.in>

This is not an offer, an invitation to offer and/or commitment of any nature. This contains artistic impressions and stock images for illustrative purpose and no warranty is expressly or impliedly given that completed development will comply in any degree with such artist's impression as depicted. All specifications of the flat shall be as per the final agreement between the Parties. Recipients are advised to use their discretion in relying on the information/amenities described/shown therein.