



## Location map



Your home.  
Close to everywhere!



- Educational Institutes**
- Assembly of God Church School (300m)
  - De Paul School (500m)
  - G.D. Birla (1km)
  - Netaji Nagar College (500m)
  - Aakash Institute (600m)



- Healthcare**
- Apollo Clinic (350m)
  - Astha Diagnostic Center (400m)
  - Lions Club (600m)
  - Suraksha Diagnostics (1km)
  - M R Bangur Hospital (2.5kms)



- Retail**
- Croma (100m)
  - Spencers (300m)
  - Bansdroni Super Market (450m)
  - Netaji Nagar Market (500m)
  - Reliance Digital (600m)
  - Max Fashion (600m)
  - South City Mall (2.5kms)



3/1, Krishna Behari Sen Street, Kolkata - 700 073  
Site Address: 189/1/1, N.S.C Bose Road, Surya Nagar, Kolkata - 700040

Developed by  
**PMV PROJECTS LLP**

Marketed by  
**PIONEER PROPERTY MANAGEMENT LTD.**  
Pioneer RERA Number: WBREERA/KOL/2023/000004 (<http://rera.wb.gov.in>)

Disclaimer: The contents of this material are conceptual and may/may not form part of the final product. We reserve the right to change and modify the contents and shall not be liable to anyone for the changes/improvements made.

Rooftop landscaped garden	Kids play area	Open air Gym	Adda zone	Party zone	Yoga area	Community Hall	Double Height Lobby
---------------------------	----------------	--------------	-----------	------------	-----------	----------------	---------------------

## SPECIFICATIONS



<b>Structure:</b>	R.C.C. Frame Structure.
<b>Elevation:</b>	Designed with Modern Architecture and blended. With weather proof paint.
<b>Entrance Lobby:</b>	Double height entrance lobby.
<b>Flooring:</b>	Vitrified Tiles in all bedrooms and living / dining.
<b>Windows:</b>	Aluminum powder coated / anodized Sliding windows with glass panes.
<b>Electricals:</b>	<ul style="list-style-type: none"> <li>• Provision for adequate light points.</li> <li>• PVC conduit pipes with Copper wiring.</li> <li>• Modular switches of reputed make.</li> </ul>
<b>Kitchen:</b>	<ul style="list-style-type: none"> <li>• Granite counter top.</li> <li>• Stainless Steel sink.</li> <li>• Anti skid flooring tiles.</li> <li>• Dado of ceramic tiles upto 2 feet above the platform.</li> </ul>
<b>Bathroom:</b>	<ul style="list-style-type: none"> <li>• Anti skid flooring tiles.</li> <li>• Ceramic tiles upto 7 feet on the wall.</li> <li>• C.P and Sanitary fittings of reputed make.</li> <li>• Hot &amp; Cold water provision.</li> </ul>
<b>Doors:</b>	<ul style="list-style-type: none"> <li>• Door frame made of timber.</li> <li>• Flush doors with locks.</li> <li>• Video door phone facility.</li> </ul>
<b>Walls:</b>	P.O.P / Putty finish internal walls.
<b>Provisional Features:</b>	<ul style="list-style-type: none"> <li>• Car parking at Ground floor level.</li> <li>• Adequate generator back up.</li> <li>• Elevators of reputed make.</li> </ul>



- 42 premium apartments
- Superior location
- Best-in-class amenities



# Ground Floor Plan



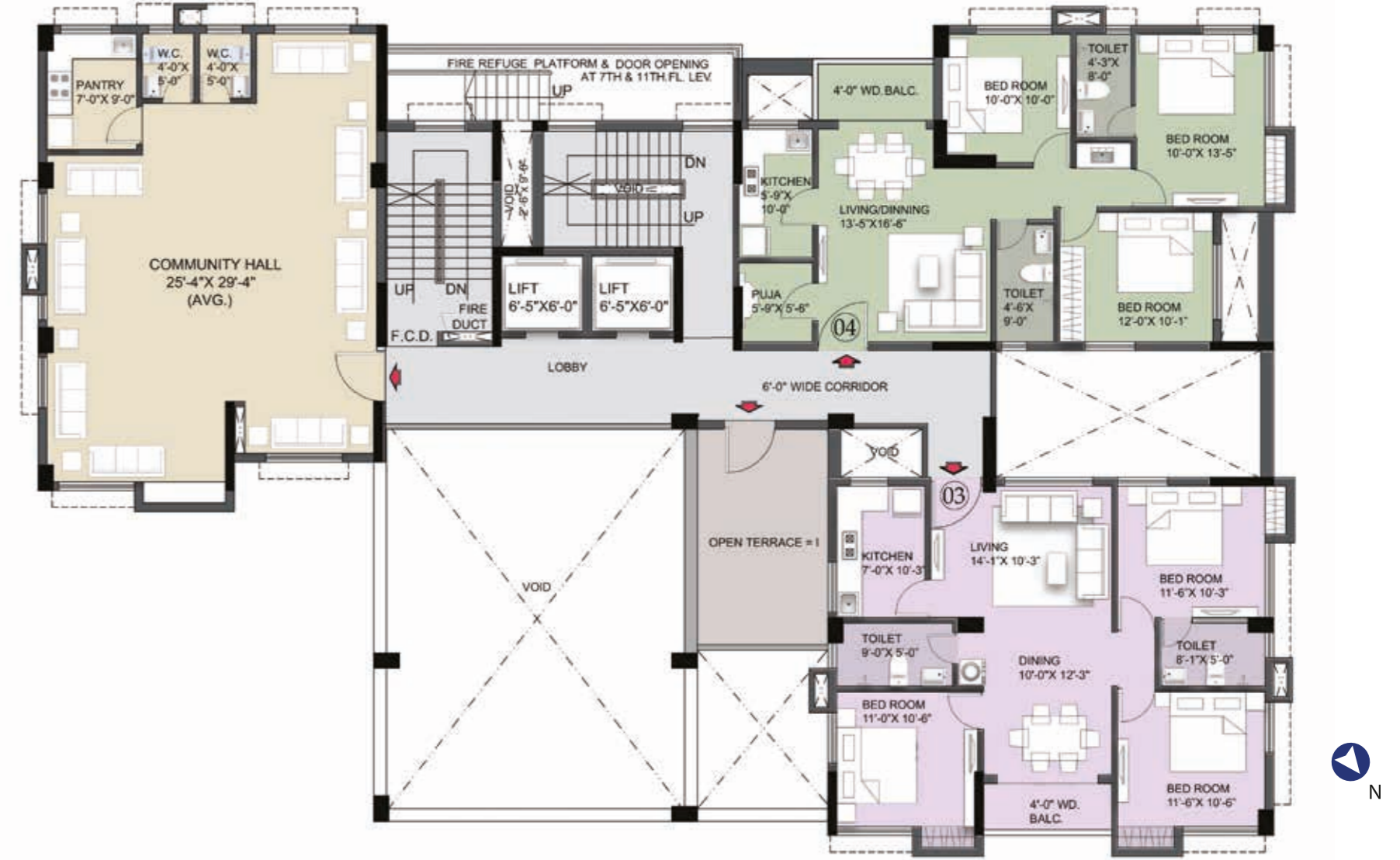
Vastu-friendly flats

Three sides open

Natural light and cross ventilation



# 1st Floor plan



Flat No	Type of Flat	Carpet area (sqft)	Balcony (sqft) (Built up)	Built up area (sqft)	Super Built up area (sqft)
3	3 BHK	864	40	989	1319
4	3 BHK	834	43	957	1276

# 2nd - 11th Floor plan



Flat No	Type of Flat	Carpet area (sqft)	Balcony (sqft) (Built up)	Built up area (sqft)	Super Built up area (sqft)
1	3 BHK	846	44	966	1288
2	2.5 BHK	705	30	800	1067
3	3 BHK	864	40	989	1319
4	3 BHK	834	43	957	1276