



balaji
COMPLEX

Features

- | Aesthetically designed elevation
- | Modern amenities
- | Quality construction
- | Pleasant location

SITE :

CTS NO. 1665/1668,

Near Lowjee Railway Station, Chinchavali Shekin, Khopoli

Special Amenities



Video Door Phone



Video Surveillance



Intercom Facility

Amenities



Flooring :

- 24"x24" Vitrified flooring in entire flat

Door :

- Wooden doors with laminate on both sides with elegant handles & lock
- Flush door with CP fittings.
- Bakelite door shutter with marble frame for WC & Bath

W.C. & Bath :

- Branded sanitary ware, exhaust fan & geyser point in bathroom
- Well designed bathroom with branded fittings
- Concealed plumbing & CP fittings of reputed make

Windows :

- Anodized / Powder coated aluminum sliding window with marble window sill & clear glass

Kitchen :

- Granite kitchen platform with stainless steel sink & ceramic tiles upto 2'0" ft

Tiles :

- Tiles dado upto beam bottom for WC & bath

Walls :

- Plaster / Gypsum finished walls with OBD paint in all rooms
- Acrylic paint on external walls

Electrical :

- Cable TV / Telephone point in living room & master bedroom
- Branded concealed copper wiring with MCB / ELCB
- Modular electrical switches

balaji COMPLEX



Your dream destination...

The Project

- Clear title from Khopoli Municipal Council
- Ground / Stilt + 4 Storied Residential Complex
- 1BHK & 2BHK Flats
- Earthquake resistant RCC design
- Elegant entrance lobby
- Elevator of reputed make in each building
- Special brick bat water proofing treatment with china chips on terrace



balaji COMPLEX

balaji COMPLEX

PLOT NO. 1 & 2



balaji COMPLEX

PLOT NO. 1 & 2

INTERNAL 9.26 M WIDE ROAD

18.288 M. WIDE DP ROAD



KEY PLAN



1ST & 3RD FLOOR PLAN



1 & 2

INTERNAL 9.26 M WIDE ROAD

18.288 M. WIDE DP ROAD



KEY PLAN



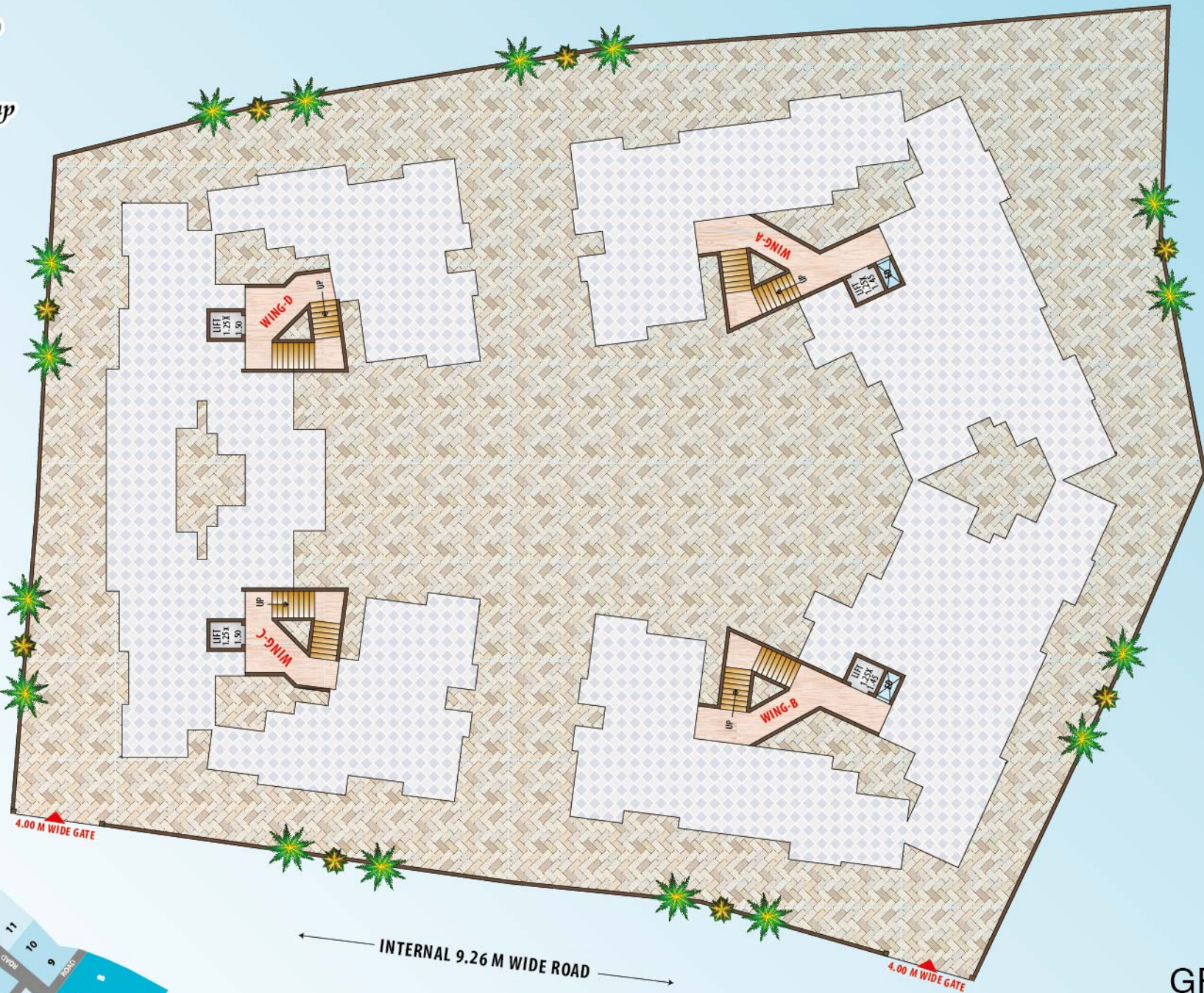
2ND & 4TH FLOOR PLAN

balaji COMPLEX

PLOT NO. 5, 6, 7 & 8



INTERNAL 6.10 M WIDE ROAD



KEY PLAN

INTERNAL 9.26 M WIDE ROAD



GROUND FLOOR PLAN



1ST FLOOR PLAN

5, 6, 7 & 8



INTERNAL 6.10 M WIDE ROAD

INTERNAL 9.26 M WIDE ROAD



2ND & 4TH FLOOR PLAN



KEY PLAN

5, 6, 7 & 8



INTERNAL 6.10 M WIDE ROAD

INTERNAL 9.26 M WIDE ROAD

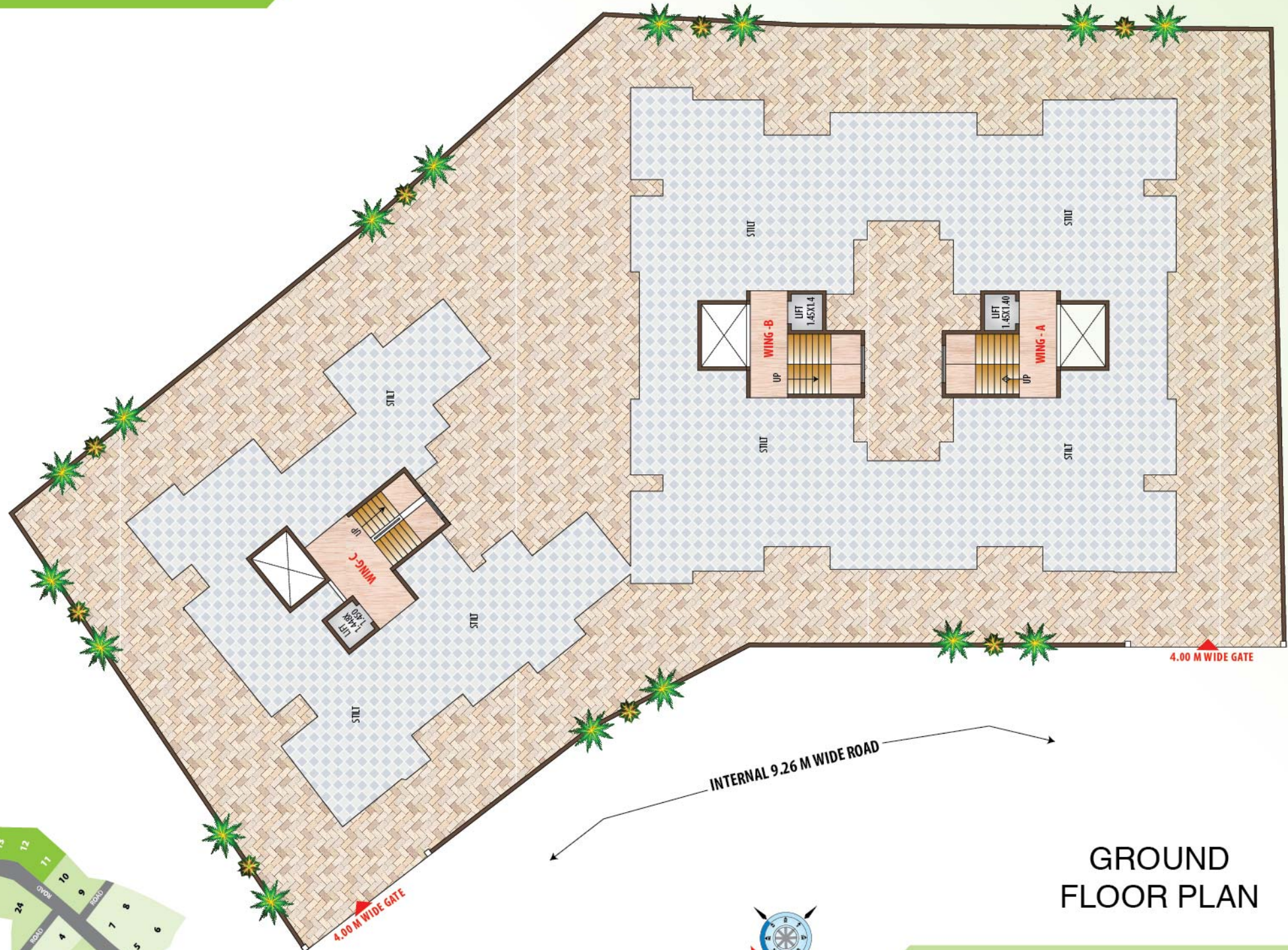
3RD FLOOR PLAN

5, 6, 7 & 8

balaji COMPLEX

PLOT NO. 11, 12 & 13







KEY PLAN

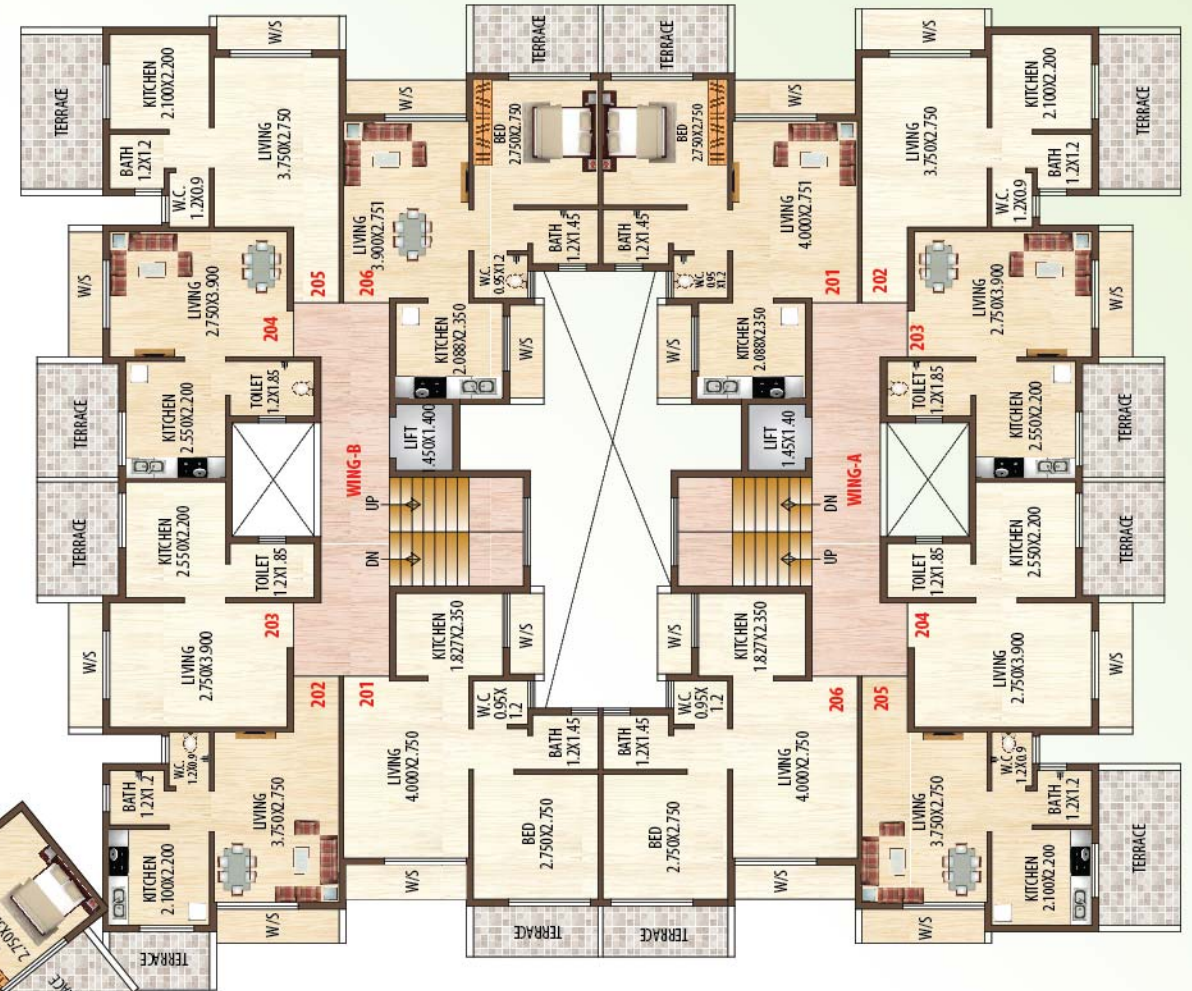


INTERNAL 9.26 M WIDE ROAD

1ST & 3RD FLOOR PLAN

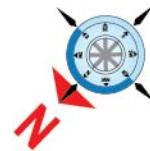


11, 12 & 13



INTERNAL 9.26 M WIDE ROAD

2ND FLOOR PLAN



KEY PLAN



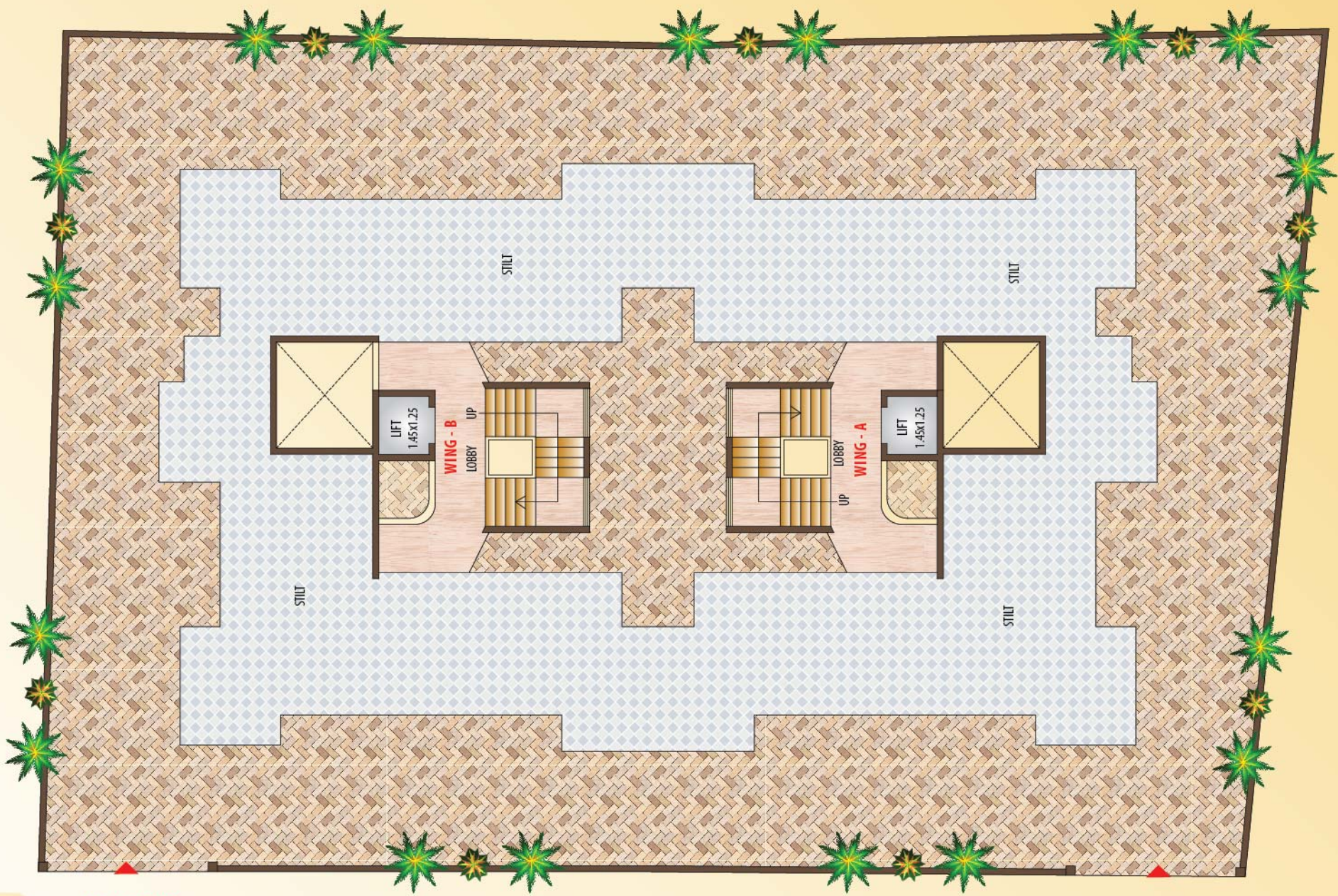
4TH FLOOR PLAN

11, 12 & 13

balaji COMPLEX

PLOT NO. 14 & 15





INTERNAL 9.26 M WIDE ROAD

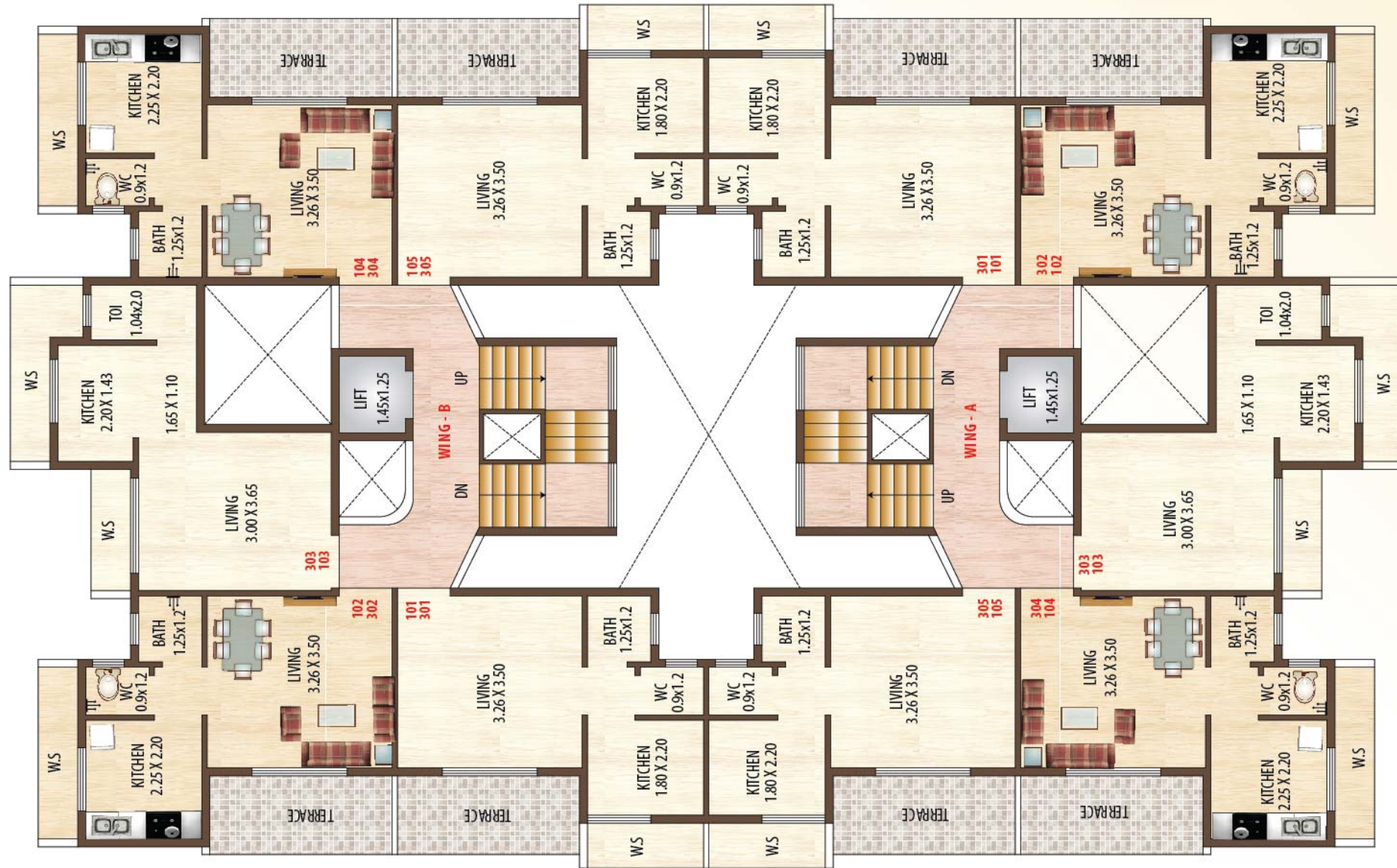
4.00 M WIDE GATE

GROUND FLOOR PLAN

KEY PLAN



14 & 15

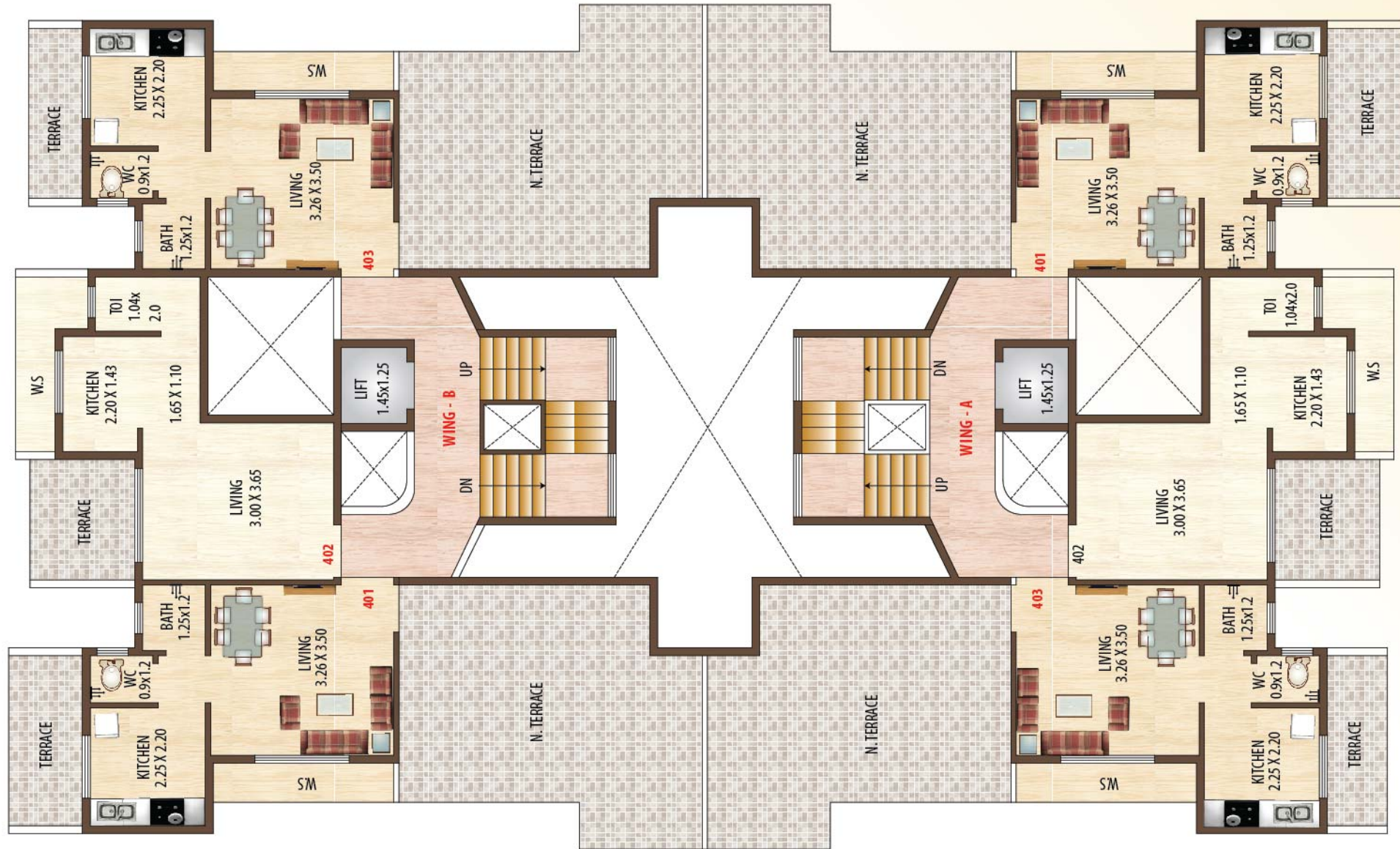


INTERNAL 9.26 M WIDE ROAD



1ST & 3RD FLOOR PLAN

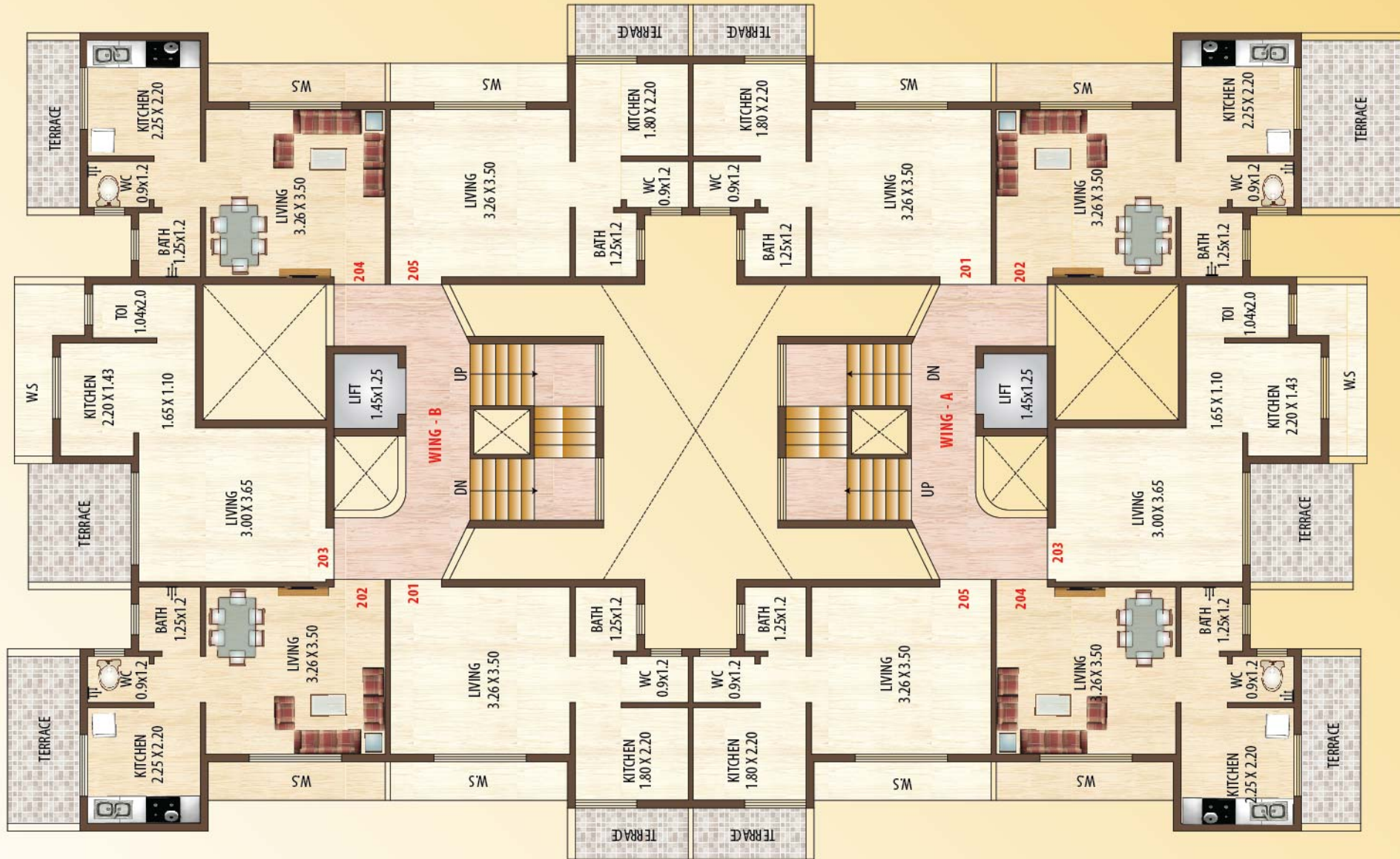
14 & 15



INTERNAL 9.26 M WIDE ROAD

4TH FLOOR PLAN





INTERNAL 9.26 M WIDE ROAD

2ND FLOOR PLAN



KEY PLAN



balaji COMPLEX

PLOT NO. 16, 17 & 18

www.jbdgroup.co.in

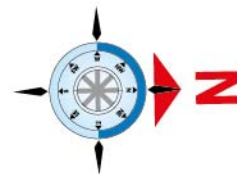


CTS NO. 1665/1668, Near Lowjee Railway Station, Chinchavali Shekin, Khopoli

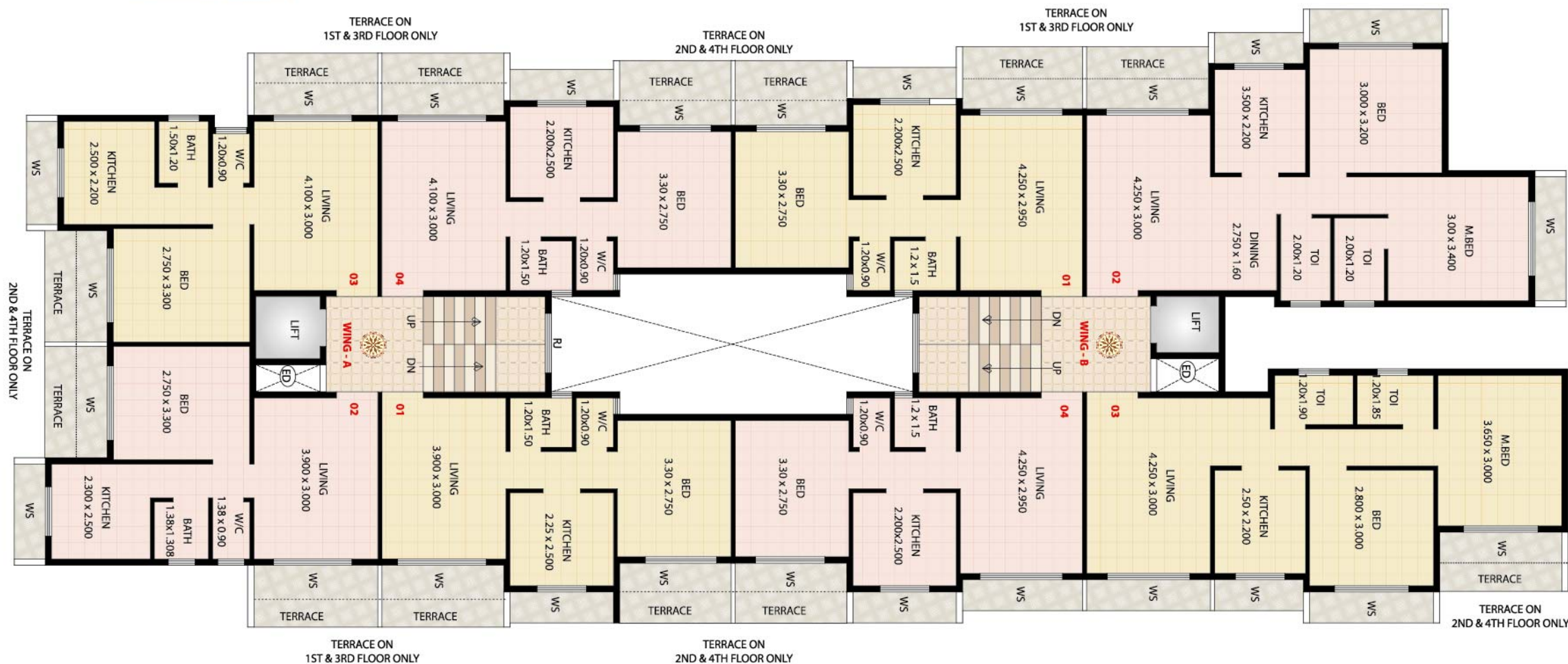
16

17

18



← 9 METER WIDE INTERNAL ROAD →



16
17
18

TYPICAL FLOOR PLAN

1st to 4th Floor Plan

balaji COMPLEX

PLOT NO. 20, 21 & 22

www.jbdgroup.co.in

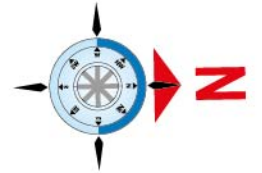


CTS NO. 1665/1668, Near Lowjee Railway Station, Chinchavali Shekin, Khopoli

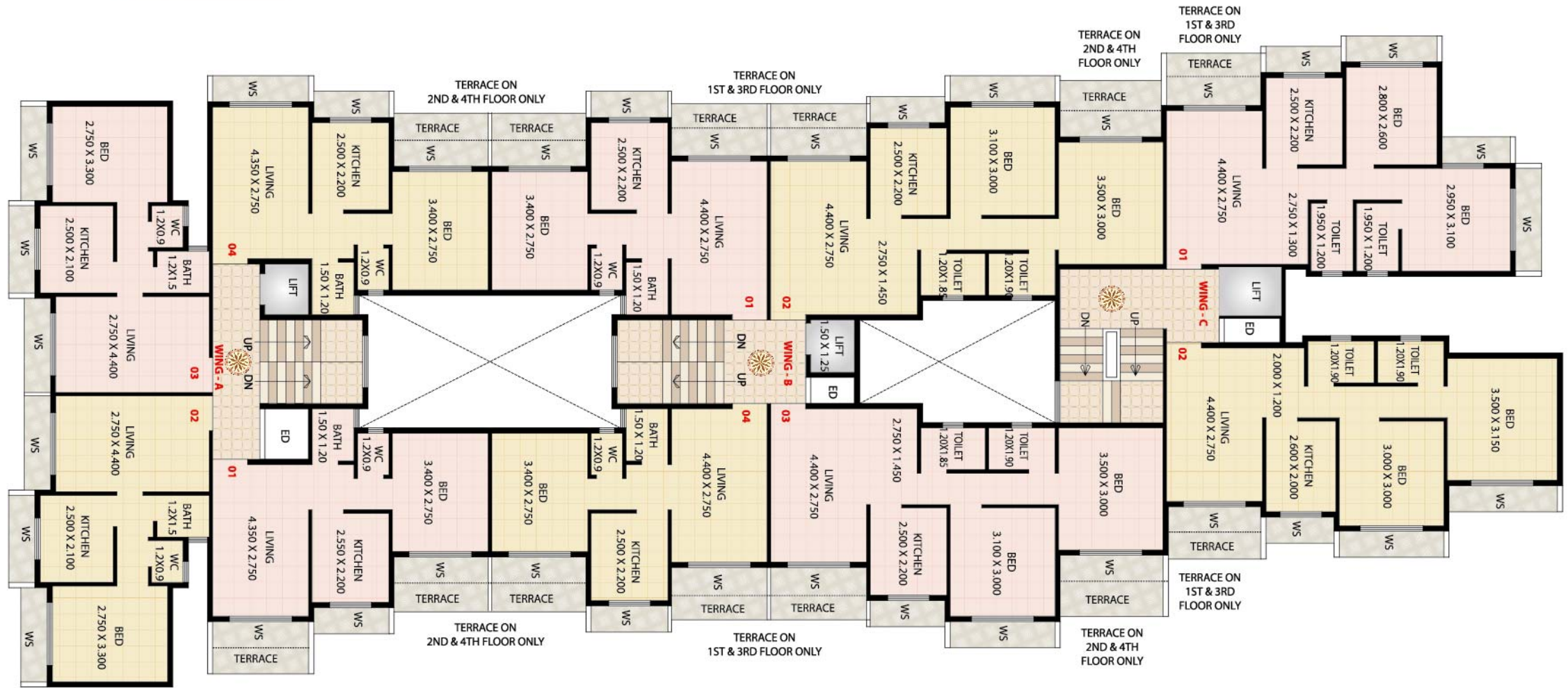
20

21

22



KEY PLAN



← 9 METER WIDE INTERNAL ROAD →

TYPICAL FLOOR PLAN
1st to 4th Floor Plan

20
21
22

balaji COMPLEX



SITE : CTS NO. 1665/1668, Near Lowjee Railway Station,
Chinchavali Shekin, Khopoli

The Location

- 0.5 km from Lowjee railway station
- 1.5 km from Khopoli railway station & bus stand
- 5 minute drive from Mumbai Pune Expressway
- 9 km from Khandala & 12 km from Lonavala
- 10 minutes drive from Gangangiri Math, Zenith waterfall
& Adlab Imagica spread across 300 acres
- 20 minutes drive from Panvel & Proposed International Airport



A Joint Venture Of



www.jbdgroup.com

Project by

BALAJI INFRA

CONTACT : 022-6110 1111 | MAIL - jbdsales@jbdgroup.com

Architect : **Vastospati Design Group**, Arch. P.K. Madhav, C.B.D. Belapur | R.C.C. Consultant : **S.V. Patel & Associates**, Ghatkopar.

NOTE : This communication is purely conceptual and is not a legal offering. It is made for only promotional purpose. The information contained in this communication is only indicative of the kind of development that is proposed and is subject to change. The developer/architect reserves the right to make changes or alter the design and specifications