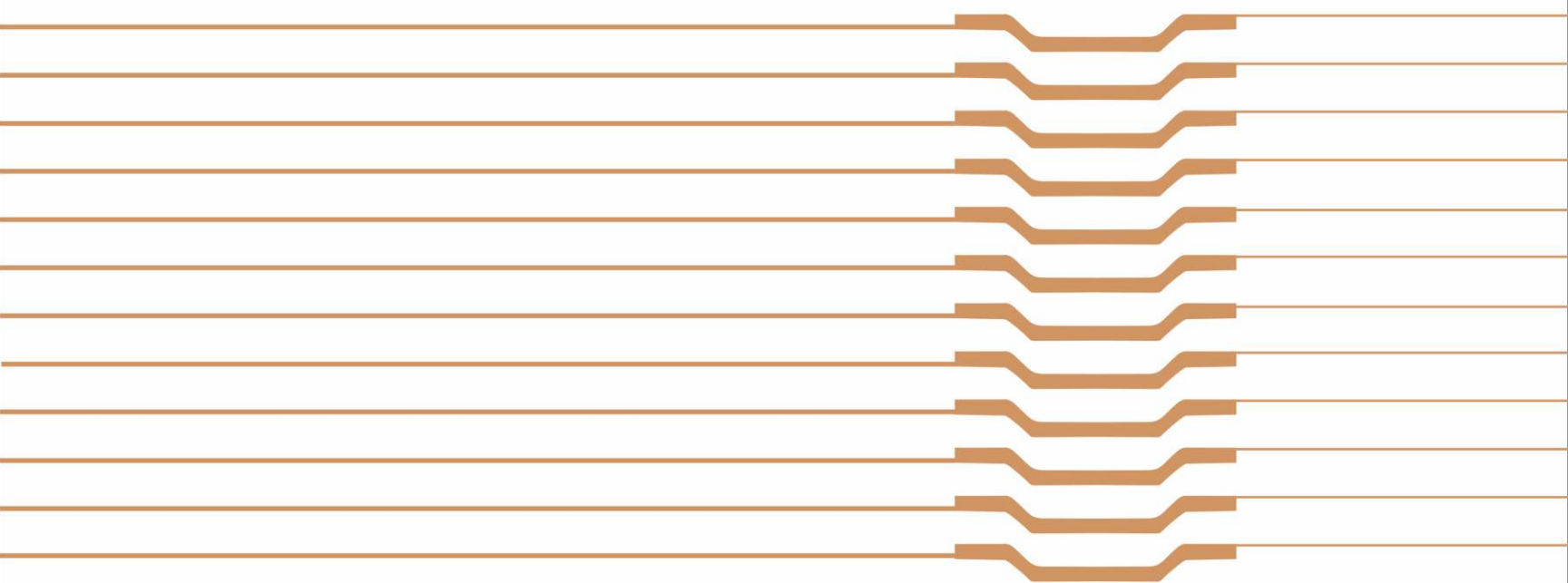


4bhk  
Smart living  
Spaces



KASPER  
GENESIS

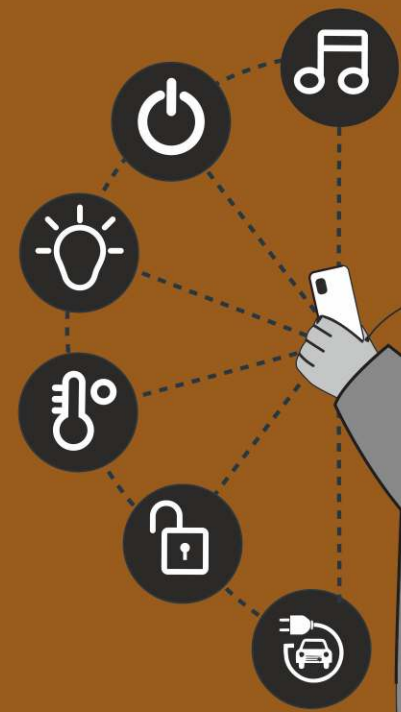
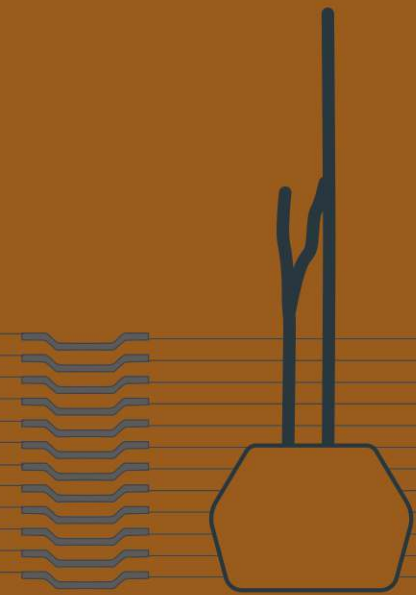


# KASPER GENESIS

The art of fine living comes naturally to you. Only the exclusive attracts your attention and you have eyes just for the extraordinary. It takes more than luxury to raise your eyebrows. Your home then must be a reflection of you, a class apart like Kasper Genesis.

# KASPER GENESIS

Owning your dream home here will most likely be your smartest decision ever. Our elegant residences come with seamless home automation systems that help you stay connected and in control even while you are away. We've made our homes smart so you get maximum convenience for a hassle-free life of bliss.





# CLASSY BEYOND Expectations

First impressions count and your homes at Kasper Genesis are sure to create unforgettable ones. Sleek and contemporary in design, the modern façade is enhanced with the wavy structured balconies and sun decks. Aesthetics immediately impact you as you cruise through the wide driveways across the beautifully landscaped gardens.





# ELEGANT BEYOND Comparison

The dramatic entrance is just the prelude to the life that awaits you within. The two majestic towers are set opposite each other overlooking the central recreational pad. Even while the streets around you bustle with activity, most of the residences will enjoy serenity and peace with scenic garden views.



# I CALMING BEYOND Imagination

Living at Kasper Genesis gives you privileged access to a world of leisure and recreation that's nothing like anything. The central area is thoughtfully designed to house top-of-the-line amenities right outside your doorstep.

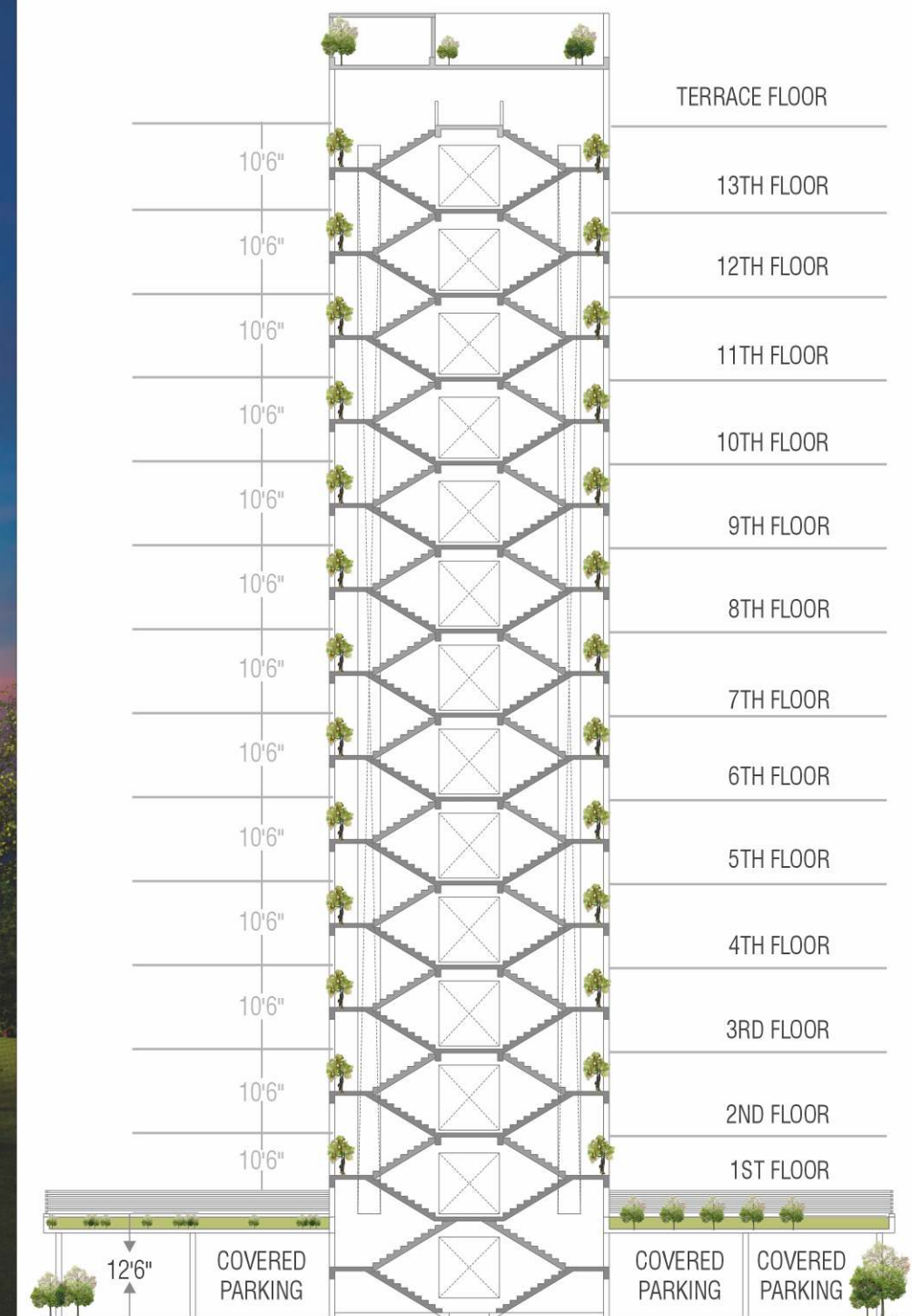


2 car allotted covered parking for each flat

6000 sq. feet podium level landscaped garden

4-side open planning for all flats

2 Club Houses

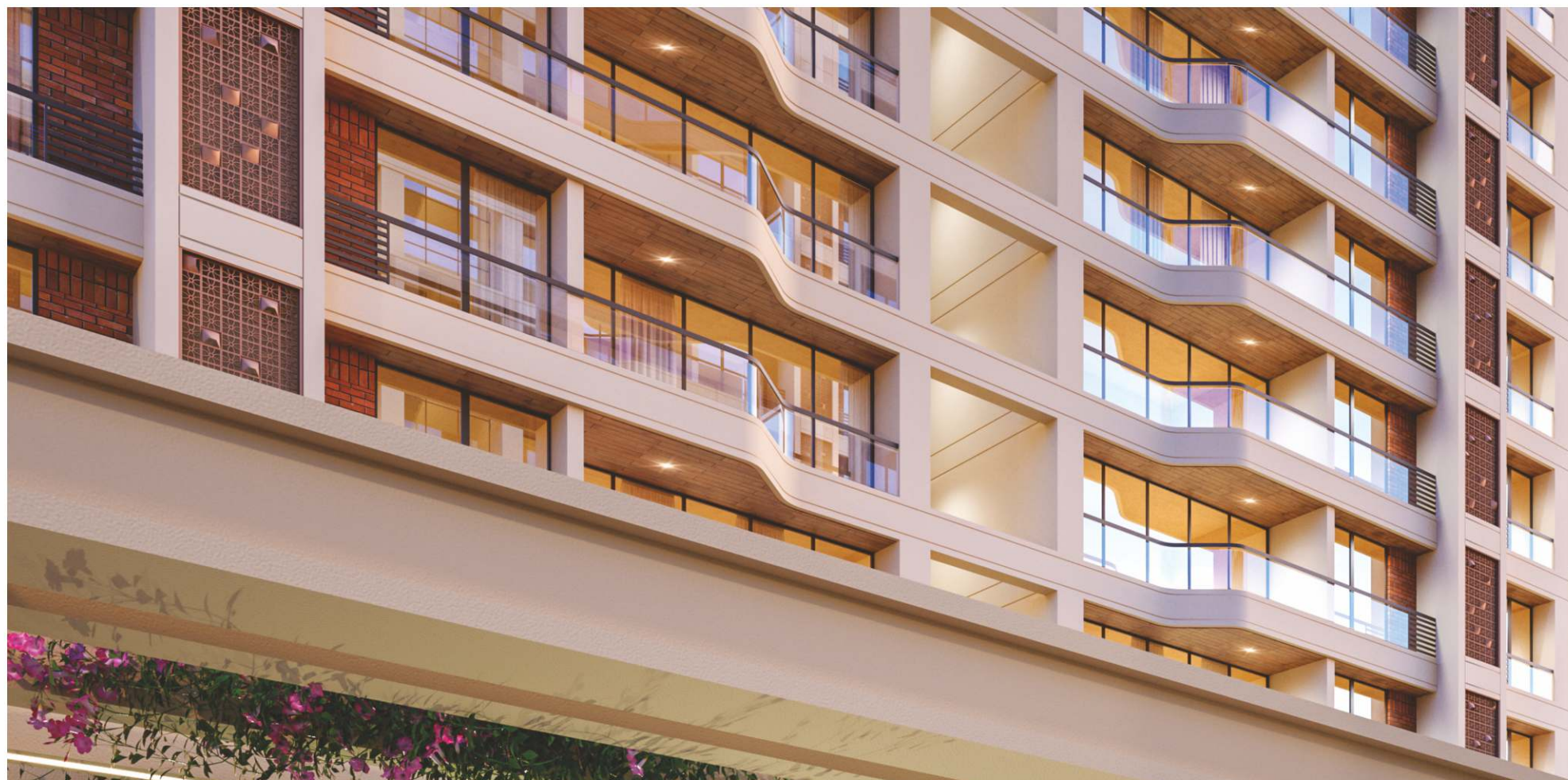


SOOTHING BEYOND  
Serenity



LIFE BEYOND  
Lifestyle





# RELAXING BEYOND Resort Life



MINI THEATRE



BOARD GAMES



GYM



LIBRARY



DAYCARE



TEMPLE



GAZEBO



TOT-LOT AREA



MULTIPURPOSE HALL



BOX CRICKET



SWIMMING POOL



SENIOR CITIZEN SEATING



PODIUM GARDEN





## VALUE ADDED AMENITIES



HOME  
AUTOMATION



24 X 7 WATER  
SUPPLY



ESTATE  
MANAGER CABIN



DESIGNATED  
AC-ODU LOCATIONS



ALLOTTED 2 CARS COVERED  
PARKING FOR EACH FLAT



SECURED ENTRANCE FOYER  
IN EACH TOWER



PRESSURISED CENTRAL GEYSER  
PROVISION FOR EACH FLAT



SINGLE DECORATIVE  
GATE ENTRY EXIT



24 X 7  
SECURITY



DRIVER  
REST ROOM



SOLAR SYSTEM FOR  
LIFT & PASSAGE AREAS



EACH FLAT FOUR SIDE OPEN  
WITH PRIVACY IN EACH BEDROOM



2 STRETCHER SIZED LIFTS  
FOR EACH TOWER



SENSOR LIGHT FOR  
PARKING



LEVEL CONTROLLER FOR  
OVER HEAD WATER TANK



FLOOR HEIGHT  
10'.6" FEET



VASTU CONSIDERED  
WHILE PLANNING



SURROUND MUSIC  
SPEAKERS IN WALK WAY



FIRE SAFETY  
SYSTEM



PICK-UP &  
DROP POINT



VIDEO DOOR PHONE  
FOR EACH FLAT



WATER SOFTENER  
PLANT

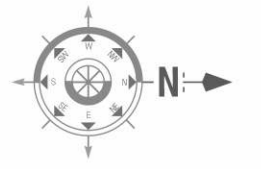


RAIN WATER  
HARVESTING



94 FT. GAP BETWEEN  
TWO TOWERS

# GROUND FLOOR PLAN

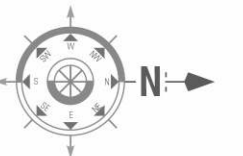


# FIRST FLOOR PLAN



# TYPICAL FLOOR PLAN

2ND TO 13TH FLOOR

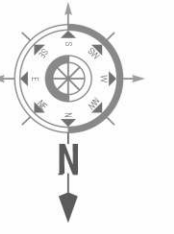




# THOUGHTFUL BEYOND Planning

At Kasper Genesis, we don't just stop at structural planning, we go a step further to add thoughtful touches of design to elevate your living experience. The entire campus is thus smartly divided into utility, recreational and residential zones to enhance functionality, aesthetics and privacy for each space.

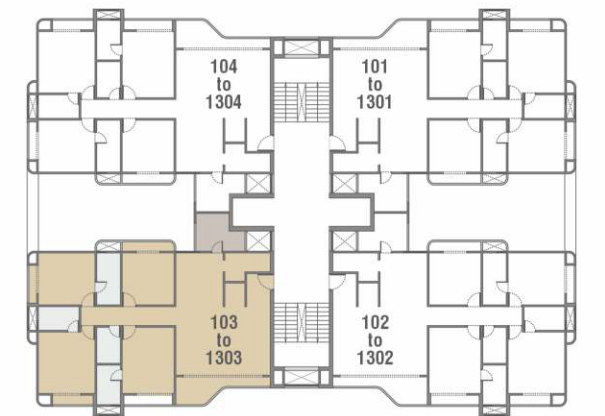


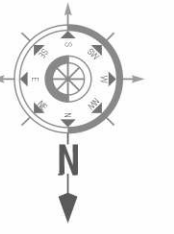


# TOWER A

## 4 BHK

Carpet Area:	1565 Sq.Ft.
Built-up Area:	1650 Sq.Ft.
Super Built -up Area:	2640 Sq.Ft.

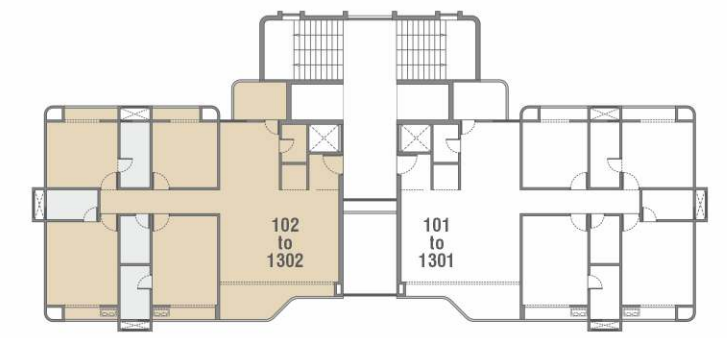




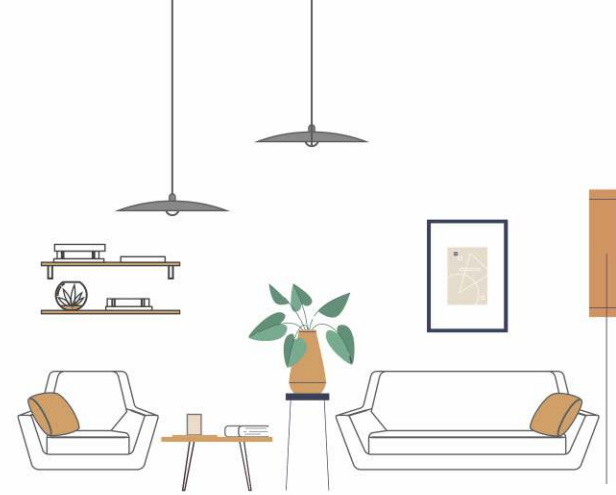
# TOWER B

## 4 BHK

Carpet Area:	1583 Sq.Ft.
Built-up Area:	1722 Sq.Ft.
Super Built -up Area:	2755 Sq.Ft.



# SPECIFICATION



## Structure

- Earthquake resistant RCC frame structure with light weight cement blocks external and internal walls.



## Kitchen, Store & Utility

- Granite slab platform with SS sink & swivel tap.
- Vitrified / Designer dado tiles over the platform.
- Provision for kitchen chimney outlet.
- Anti-skid tiles in flooring & dado in utility area.



## Bathrooms

- Branded premium ceramic tiles, sanitary fixtures and bath fittings.
- Anti-skid tiles in floor and vitrified tiles in dado upto false ceiling level.
- Provision for centralised hot water supply in all bathrooms.



## Doors & Windows

- Main door: Solid-core flush door with decorative finish on both sides & solid teakwood doorframe.
- Internal doors: Solid-core flush doors with laminate finish on both sides & stone doorframes.
- Standard anodised aluminium single glazed windows and sliding doors with mosquito nets.



## Flooring

- Premium Vitrified tiles flooring in the entire unit.



## Balconies

- SS Balustrade posts & railings with toughened glass sections in balconies.



## Wall Finishes

- Internal Walls: Single coat plaster with double coat putty finish.
- External Walls: Double coat plaster with weather resistant paint.



## Electrical

- Three phase electric connection with concealed ISI copper wiring.
- Automized Switches in all areas (except kitchen & guest bedroom) with sufficient electrical points.
- Smart Security System with Video door phone & Access control system connected to security cabin.
- AC electric Points in all rooms except kitchen.



## Others

- Waterproofing in all toilets / bathrooms, balcony, terrace & utility.
- High speed stretcher-sized lifts with ARD & automatic doors. (2 lifts for each tower)
- Generators to be provided with 100% back up for Lift and Passage.



94 FEET  
DISTANCE  
BETWEEN  
TOWERS

## THE CHOICEST OF BRANDS



Developer has all the rights to change the above mentioned brands as per availability and suitability.



A PROJECT BY



**Developer:** Bhakti Associates

**KASPER GENESIS**, Besides Shreenath Avenue,  
Near BAPS Swaminarayan Temple, Bhayli, Vadodara 391410.

**Architect:**  **TALIB PATEL ASSOCIATES**

**Structural Consultant:**  **Vyom consultant**

**Plumbing Consultant:**  **Krupalu Consultant**

**Electrical Consultant:**  **SUV POWER SOLUTION LLP**

**M.: 78748 25000, 78749 25000**

**Email:** [info@kaspergroup.in](mailto:info@kaspergroup.in)  
**Website:** [www.kaspergroup.in](http://www.kaspergroup.in)

**LOCATION**



**WEBSITE**

