

Live The Absolute Life

Project by Juhi Infrabuild LLP



JUHI DEVELOPERS
TRUST IS OUR FOUNDATION



Site Address : Plot No. A10, Sector 39A, Kharghar, Navi Mumbai - 410210

Office Address : 1605/1606, The Ambience Court, Plot No.2, Sector-19D, Vashi, Navi Mumbai, Maharashtra, India.

| E : sales@juhidevelopers.com | W : www.juhidevelopers.com

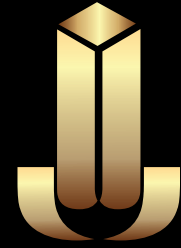


The project MahaRERA registration number is P52000020033.
Available on the website <https://maharera.mahaonline.gov.in>

Disclaimer:

This brochure may contain other proprietary notices and copyright information, the terms of which must be observed and followed. Specifications and amenities mentioned in this brochure and all promotional documents are representations. Information, images and visuals, sketches shown are artists' and architects' impressions and are indicative of the envisaged developments and the same are subject to approvals from local authorities. The developer reserves right to make additions, deletions, alterations or amendments as and when they deem fit and proper, without any prior notice. No representation or warranty is made or intended as to the accuracy of content and representations and no commitments are being given under this brochure document as to its suitability or adequacy for any purpose otherwise. The common areas and amenities shown in ANY brochure are for the entire layout of the project and not specific for any particular building or phase. These amenities will be developed in a phase-wise manner over a period of time. This brochure is conceptual and is not a legal document. It cannot be treated as part of the final purchase agreement that may be executed from time to time.

NIHARIKA ABSOLUTE



JUHI DEVELOPERS
TRUST IS OUR FOUNDATION

**CHANGING THE LANDSCAPE OF
NAVI MUMBAI**

Since its inception, Juhi InfraBuild LLP, a sister concern of Juhi Developers, has been committed to designing architectural marvels and providing superlative services. The brand has established itself and continually proven to be one of the most sought after names in the Real Estate industry.

Constructing landmarks at strategic locations that derive appreciated value in terms of both returns and comfort, Juhi Developers have earned a reputation for quality construction and inspiring design. Developments that stand testimony to the brand's reputation are spread across Navi Mumbai.

**YOU COULD MAKE A LIVING.
OR YOU COULD MAKE A DIFFERENCE.
WE MAKE A DIFFERENCE.**

INTRODUCING

NIHARIKA ABSOLUTE

The perfect mix of design, luxury and finesse.

A home you've been waiting for.

From architectural planning to the smallest comfort - every single detail carefully crafted to create an unparalleled ownership experience.

Designed for Higher Living

These opulent 1 & 2 BHK living spaces span across 6 magnificent 14 storey towers & are designed keeping your convenience in mind.

Indoors or outdoors –
LIVE THE ABSOLUTE LIFE!



Artist's Impression

A Gem of a Location

Located in sector 39A, Niharika Absolute sits in the heart of the most upcoming and planned part of the city.

KHARGHAR LOCATION ADVANTAGES :

- Well connected to Mumbai Pune Expressway: **6 km**
- Old Mumbai Pune highway: **0.5 km**
- Central Park: One of The Largest Gardens in Asia spread across 290 Acres: **3.2 km**
- 18 Hole Golf Course: **3.2 km**
- ISKON Temple: **3.6 km**
- D.Y. Patil Stadium: **11.4 km**
- Pandavkhada waterfall: **4.1 km**
- Metro station: **0.2 km**
- Kharghar Station: **6 km**
- Upcoming International Airport: **9km**

ENTERTAINMENT CENTRES

- Utsav chowk: **6.2 km**
- Shilp chowk: **4.5 km**
- Multiplexes at short distance

EDUCATIONAL INSTITUTES

- ACPCE Management Studies And Research College of Engineering: **7.2 km**
- NMIMS School Of Business Management: **2 km**
- Bharati Vidyapeeth: **7.7 km**
- Institute for Technology and Hotel management (ITM): **6.7 km**
- International institute of fashion Technology (IIFT): **6.7 km**
- Satyagraha College Of Arts, Science and Commerce: **5.6 km**
- Yeral Dental college and Hospital and Management: **6.8 km**

HOSPITALS

- Tata hospitals: **4.2 km**
- Om Navjeevan Hospital: **4.6 km**
- Ornate Hospital: **2.3 km**
- Geo Medicare: **4.5 km**
- Satyam multispecialist: **4.5 km**

SHOPPING

- D mart: **3 km**
- Reliance fresh mart: **2.5 km**
- Little world mall: **6 km**
- Glomax mall: **6.3 km**

SCHOOLS

- Sanjivani international school: **3 km**
- Vibgyor High School: **3.5 km**
- DAV international school: **4 km**
- Covent Of Jesus & Mary High school: **4.8 km**
- Apeejay School: **4.4 km**
- Radcliffe School: **6.3 km**

WEEKEND DESTINATIONS : 1-2hrs away*

Khandala-Lonavala, Aamby Valley, Imagica, Matheran, Alibaug-Kashid Beach, Kolad.

PROPOSED

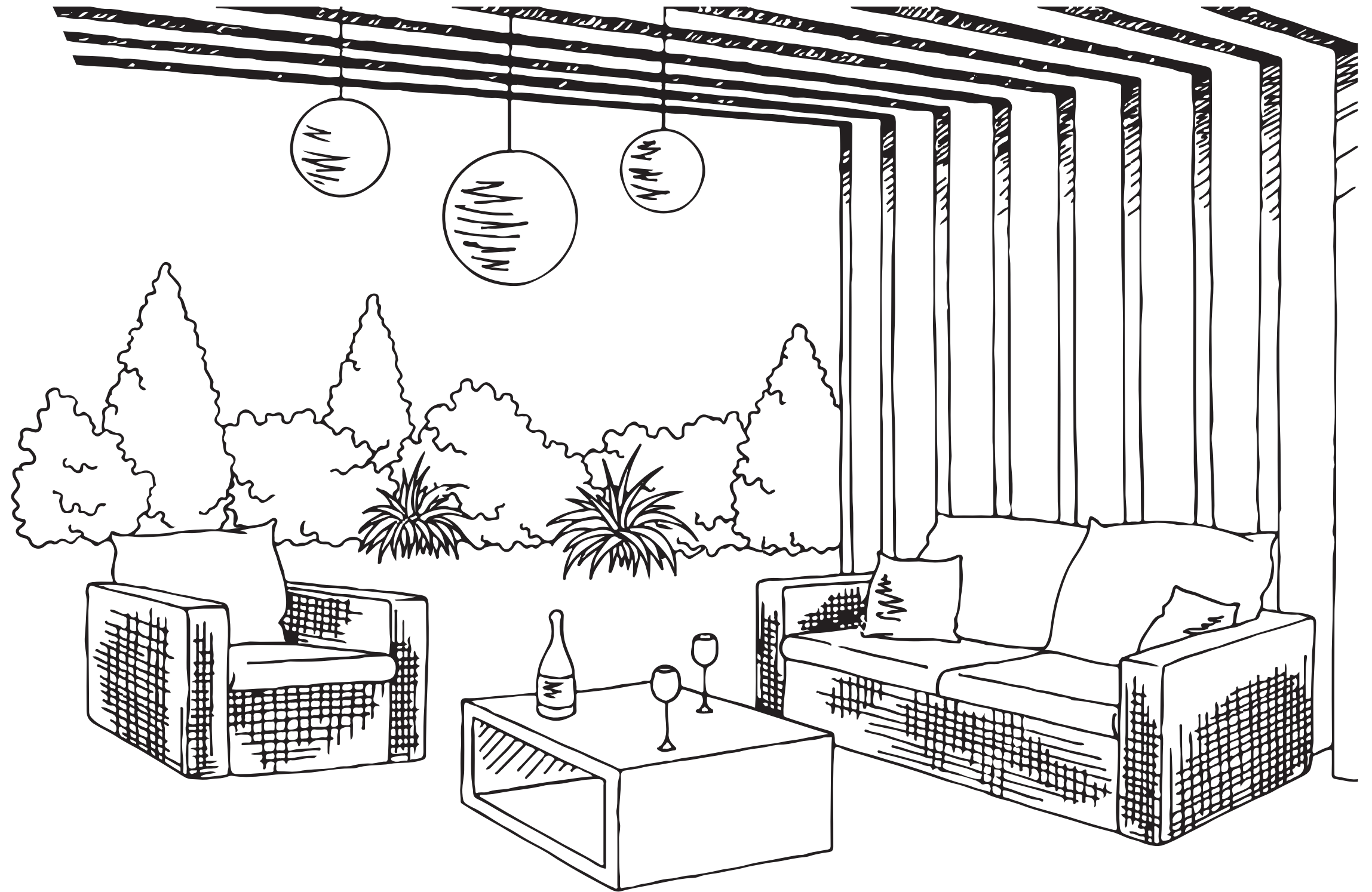
- Turbhe-Kharghar 8 Lane Tunnel
- Fun City close To Kharghar of approx 8700crores (Approved by Govt): **3 km**
- Planned mega commercial Hub in Kharghar: **3 km**



There's More to Everyday

Niharika Absolute offers exclusive amenities to its residents, ensuring every moment spells enthusiasm whereas each day, repose. An early morning jog, a quiet moment contemplating the sunset, a quick dip, a family get together. All accomplished without stepping out of the complex.

Live the absolute life EVERYDAY!



The De-stressing Dip

Submerge yourself in the feeling of utmost ecstasy. Do a quick lap across the length of the pool or just lay calm, gazing at the beautiful sky above. Take a calming spa to beat the busy day's humdrum.

- ADULT SWIMMING POOL
- KIDS' SWIMMING POOL WITH SLIDES
- STEAM SAUNA SPA
- JACUZZI (NEAR THE POOL)



Break a Sweat

Let an all-new level of exuberance take over. Our extensive facilities make sure you strike the right balance between your mind, body and soul.

- GYMNASIUM AND HEALTH CLUB
- OPEN AIR GYM
- JOGGING TRACK



The details shown herein are only indicative and they are subject to change/s based on approval from competent authorities. The images are for representation purpose only.

Hop, Skip & Jump in to Play

With a meticulously designed kids' play area right inside your complex, let every day be action-filled for them. And live worry-free as it is planned giving prime importance to kids' safety and security.

- CHILDREN'S PLAY AREA
- DAY CARE CENTRE



Practice Today, Champion Tomorrow.

Let the young ones disconnect from technology and screens as they discover, explore and master their athletic inclinations.

- NET CRICKET PITCH
- BADMINTON COURT
- INDOOR GAMES

The details shown herein are only indicative and they are subject to change/s based on approval from competent authorities. The images are for representation purpose only.



A Corner for New Experiences

Age is not just a number. It's a reason to care, respect and pamper the elders with their own senior citizen's corner.

- SENIOR CITIZEN'S CORNER



Be the Gracious Host

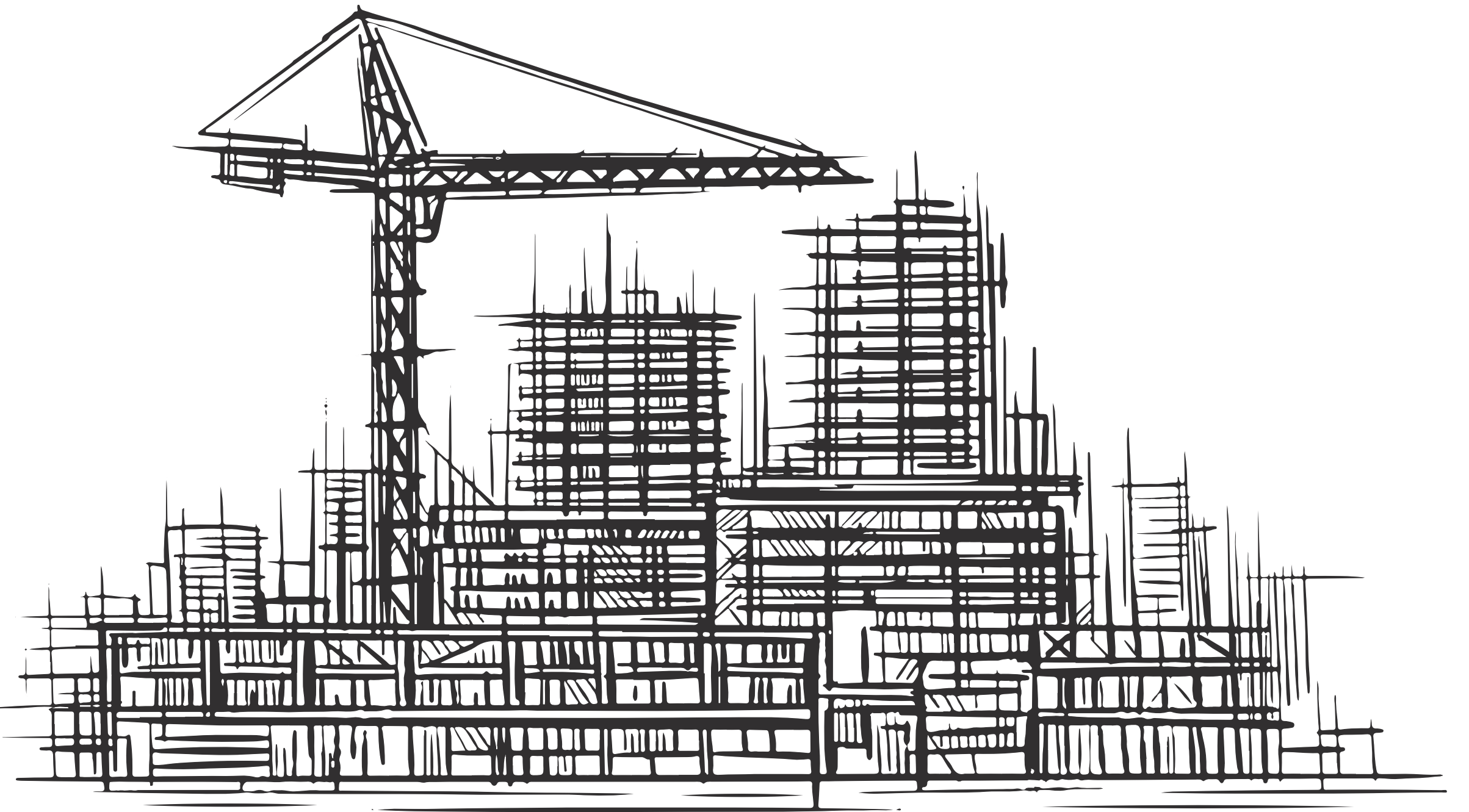
Let the magnificent occasion area give a warm welcome to your guests. Make events fun and interesting at Niharika Absolute.

- OPEN PARTY LAWN

The details shown herein are only indicative and they are subject to change/s based on approval from competent authorities. The images are for representation purpose only.

Planned to Perfection

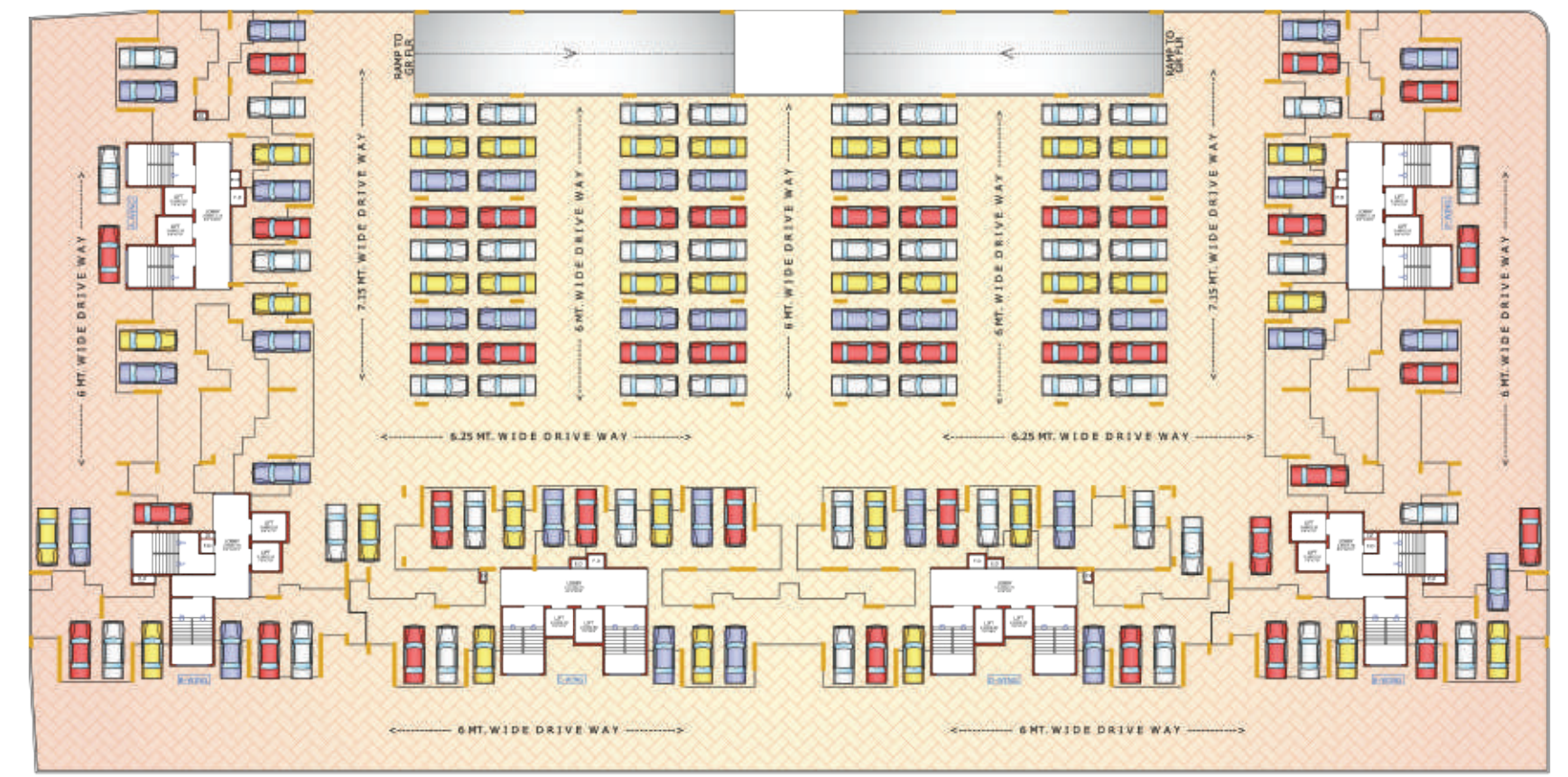
The arrangement of rooms, the flow from one room to another and the use of space is planned with utmost care and perfection for you to have an unparalleled living experience.



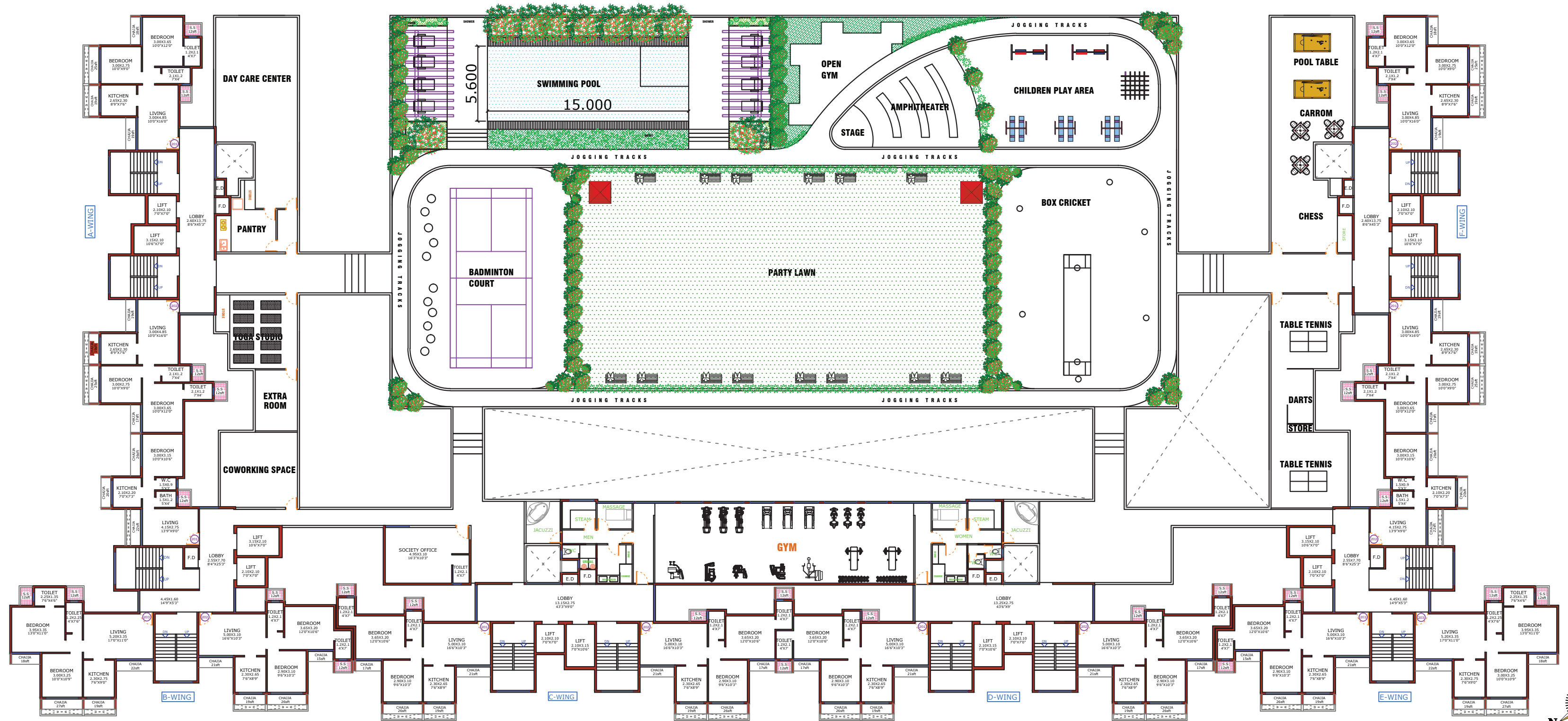
Ground Floor Plan



First Floor Plan

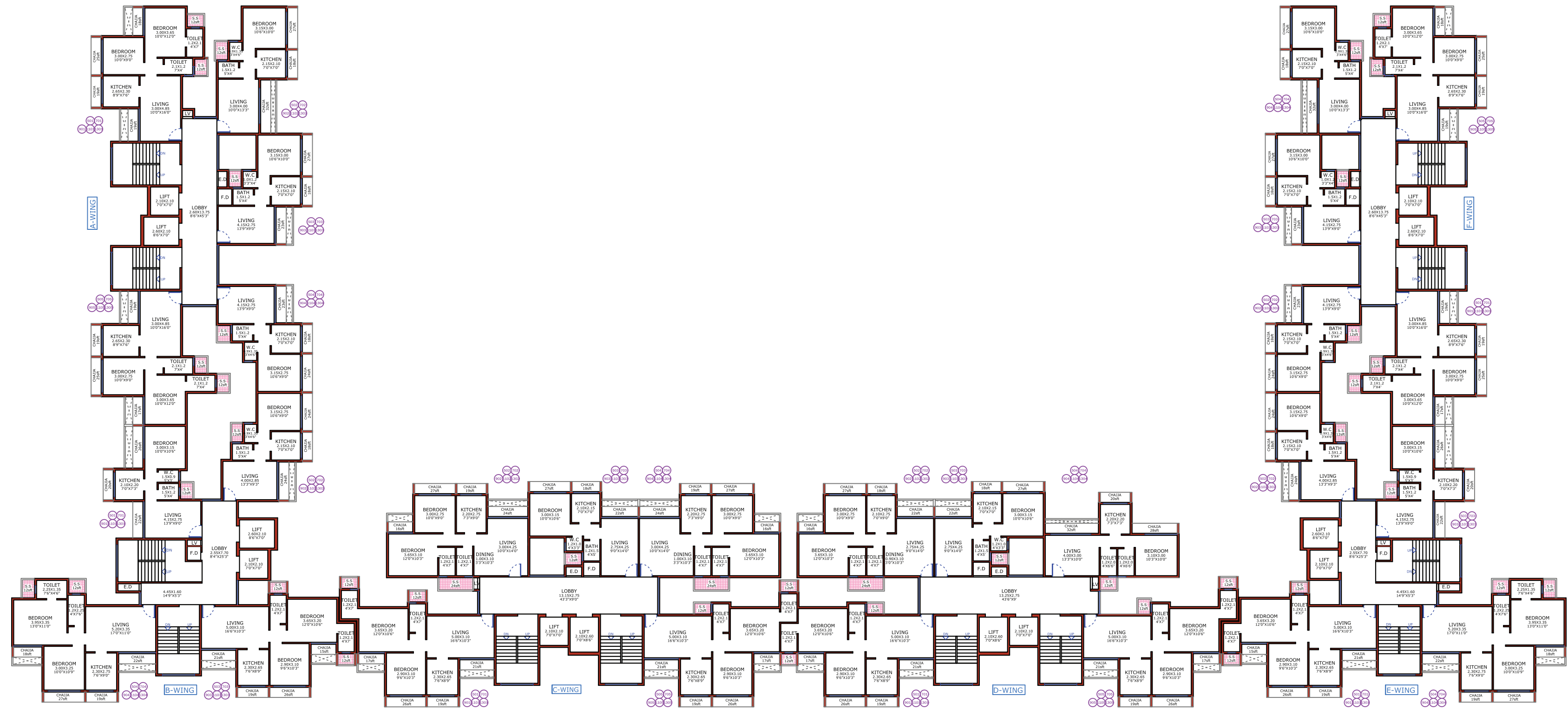


Second Floor Plan



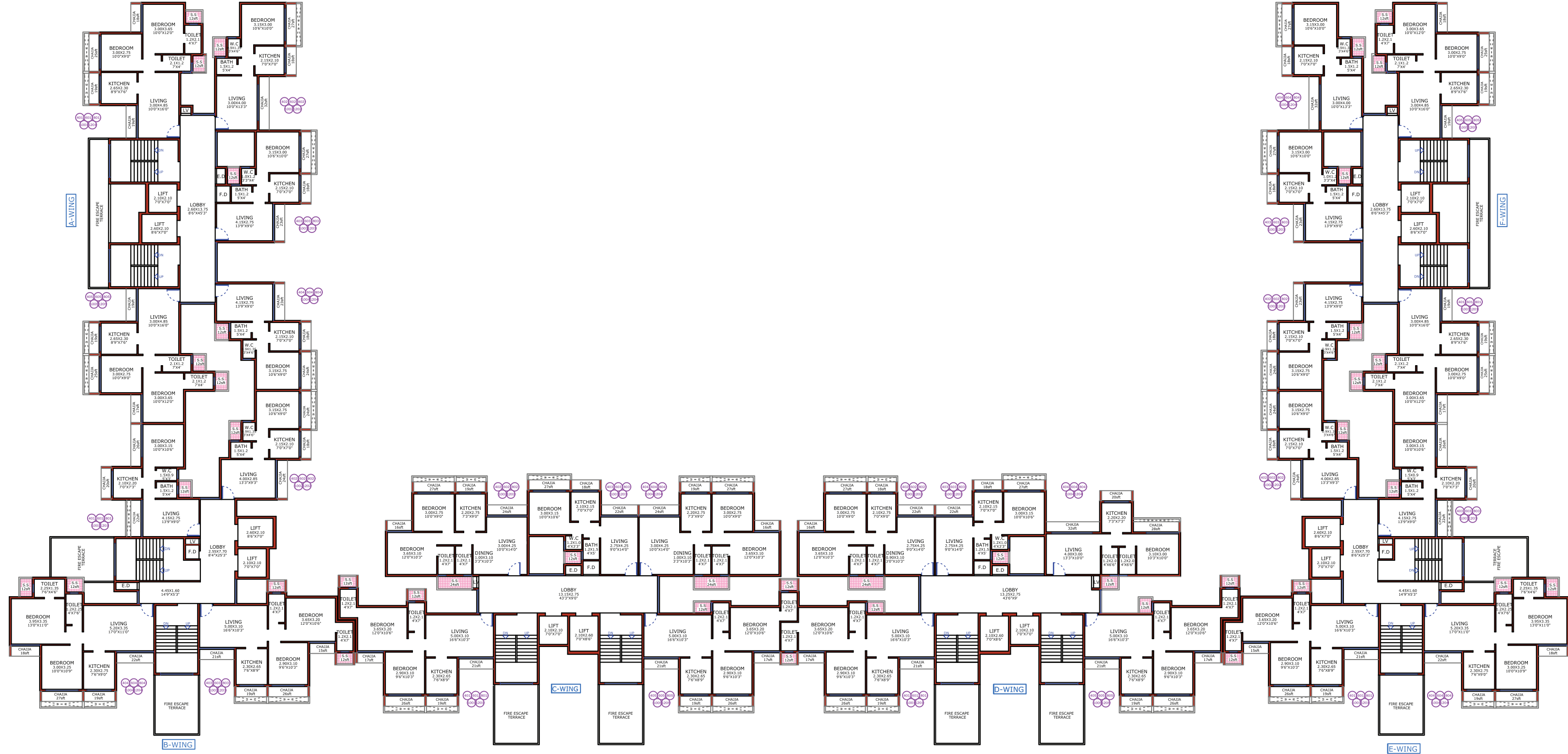
Typical Floor Plan

(Floors - 3rd, 5th, 7th, 9th, 11th & 13th)



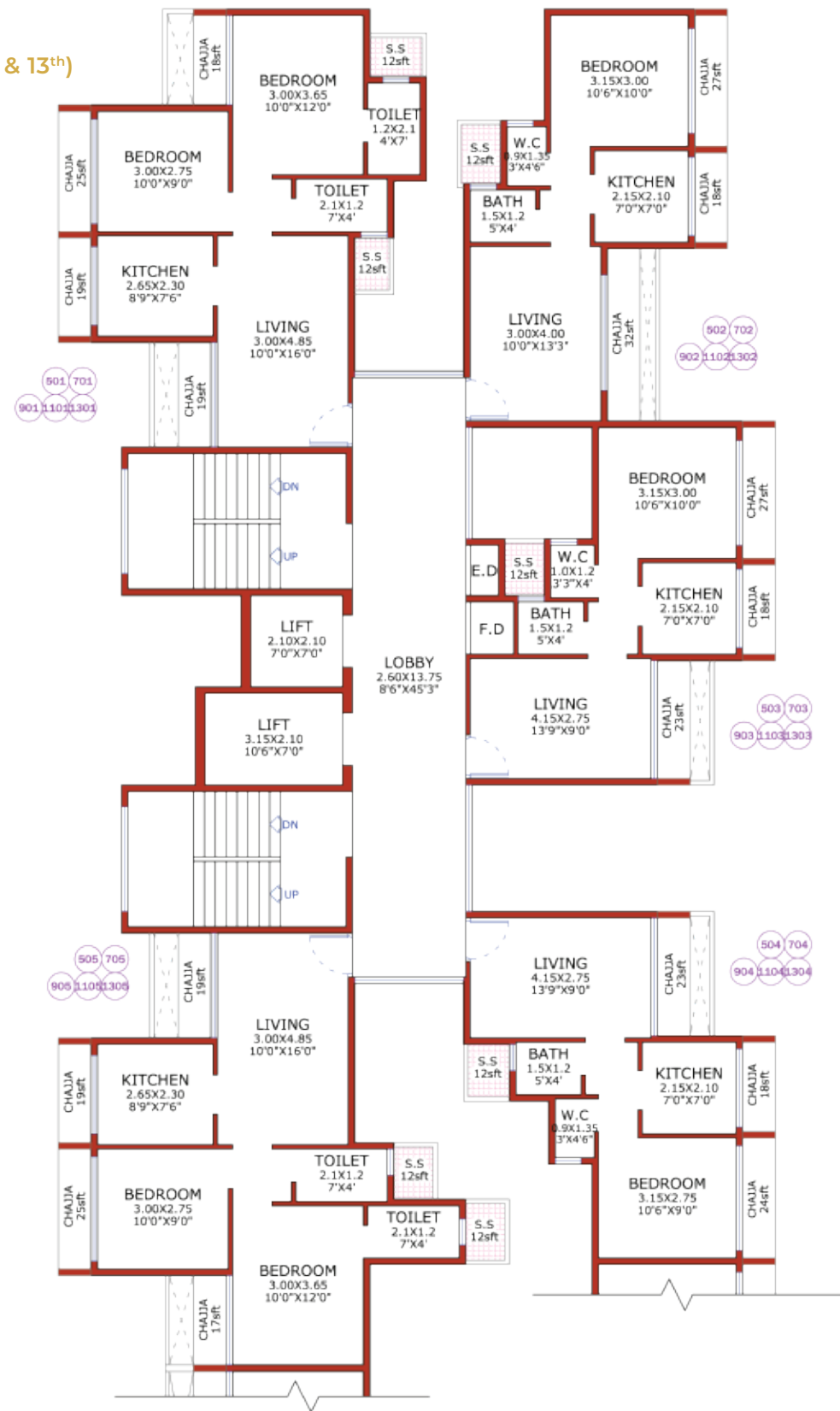
Typical Floor Plan

(Floors - 4th, 6th, 8th, 10th & 12th)



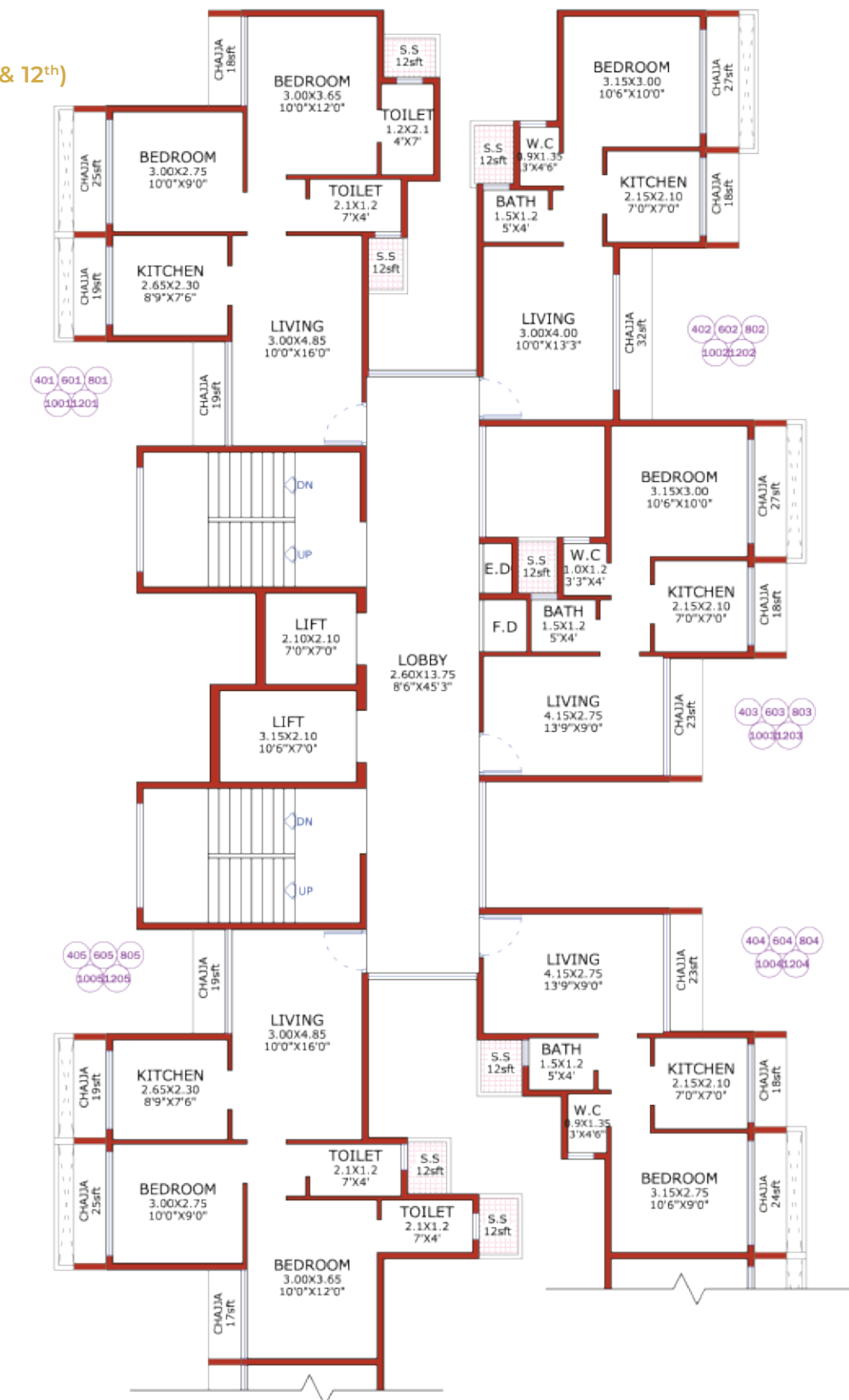
Typical Floor Plan
A & F Wings

(Floors - 3rd, 5th, 7th, 9th, 11th & 13th)



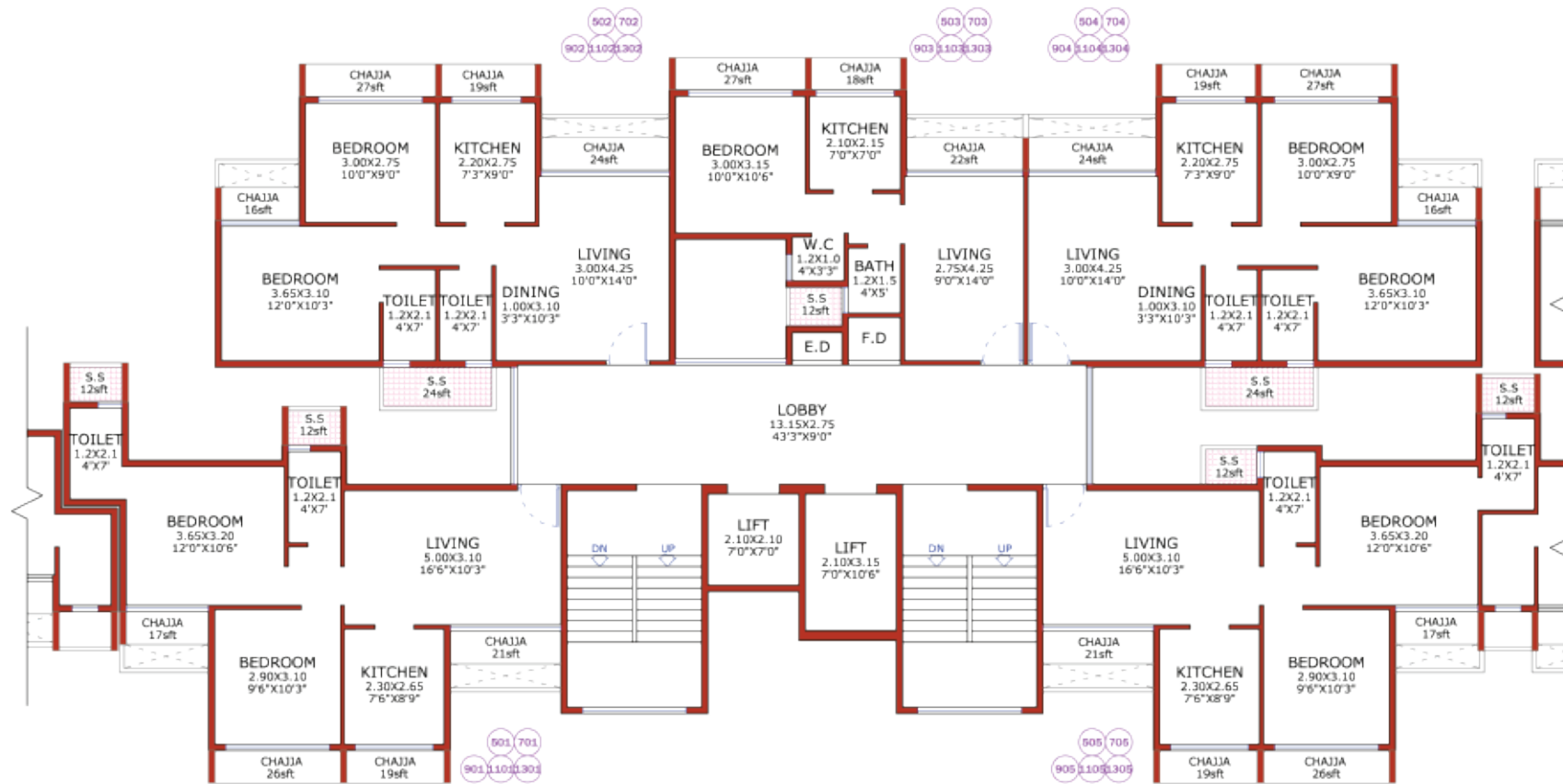
Typical Floor Plan
A & F Wings

(Floors - 4th, 6th, 8th, 10th & 12th)



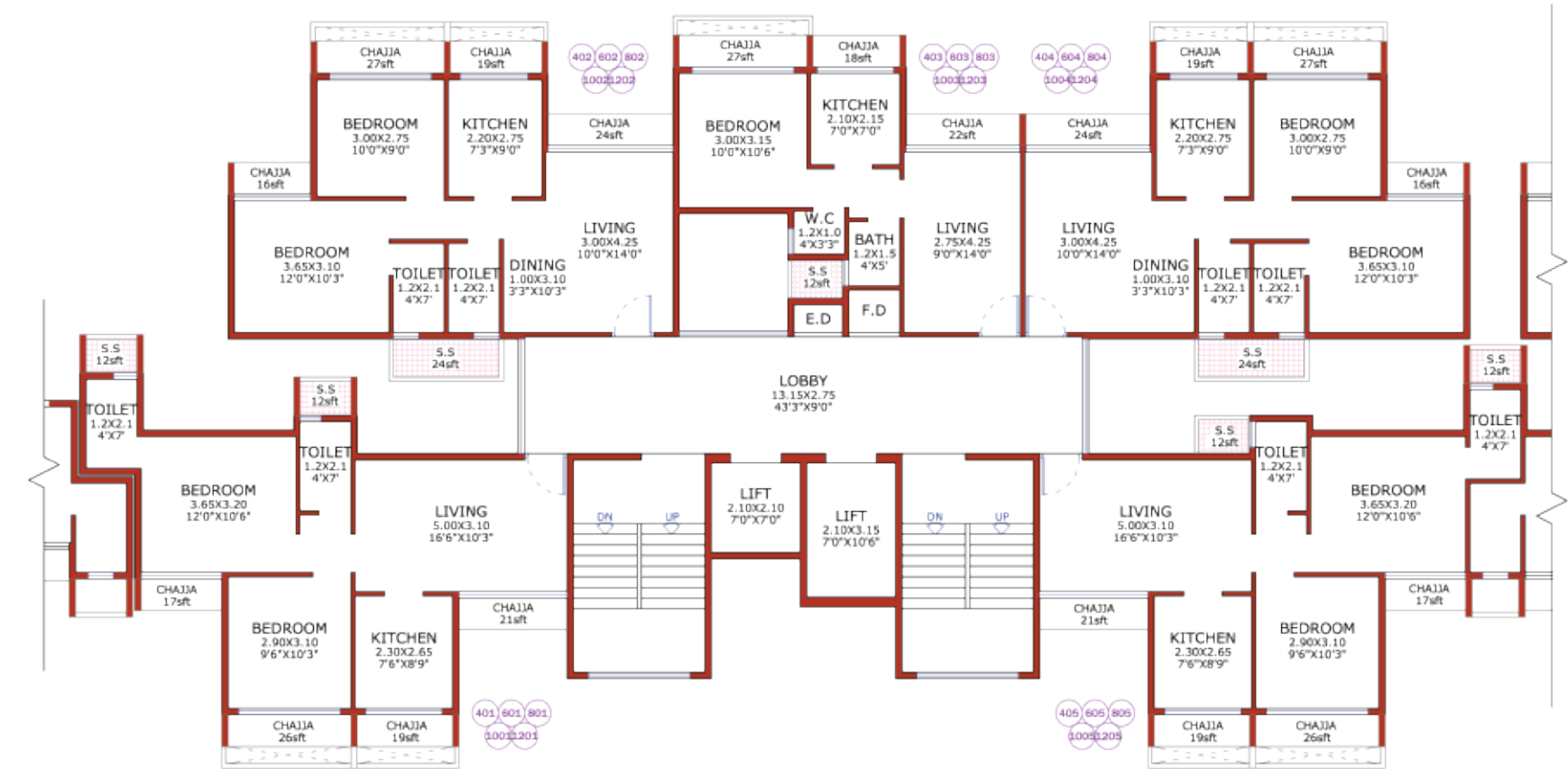
Typical Floor Plan
C Wing

(Floors - 3rd, 5th, 7th, 9th, 11th & 13th)



Typical Floor Plan
C Wing

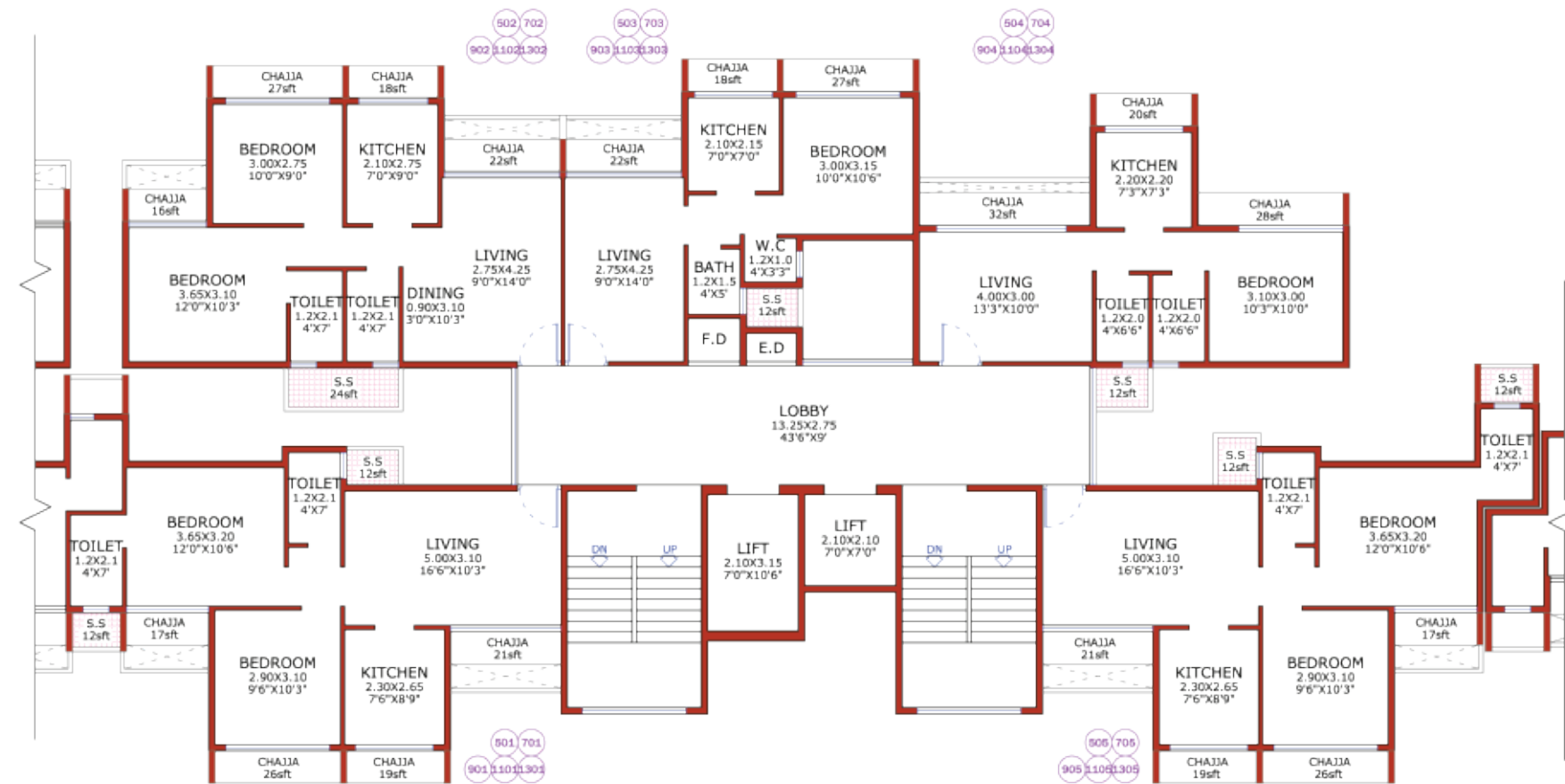
(Floors - 4th, 6th, 8th, 10th & 12th)



Typical Floor Plan

D Wing

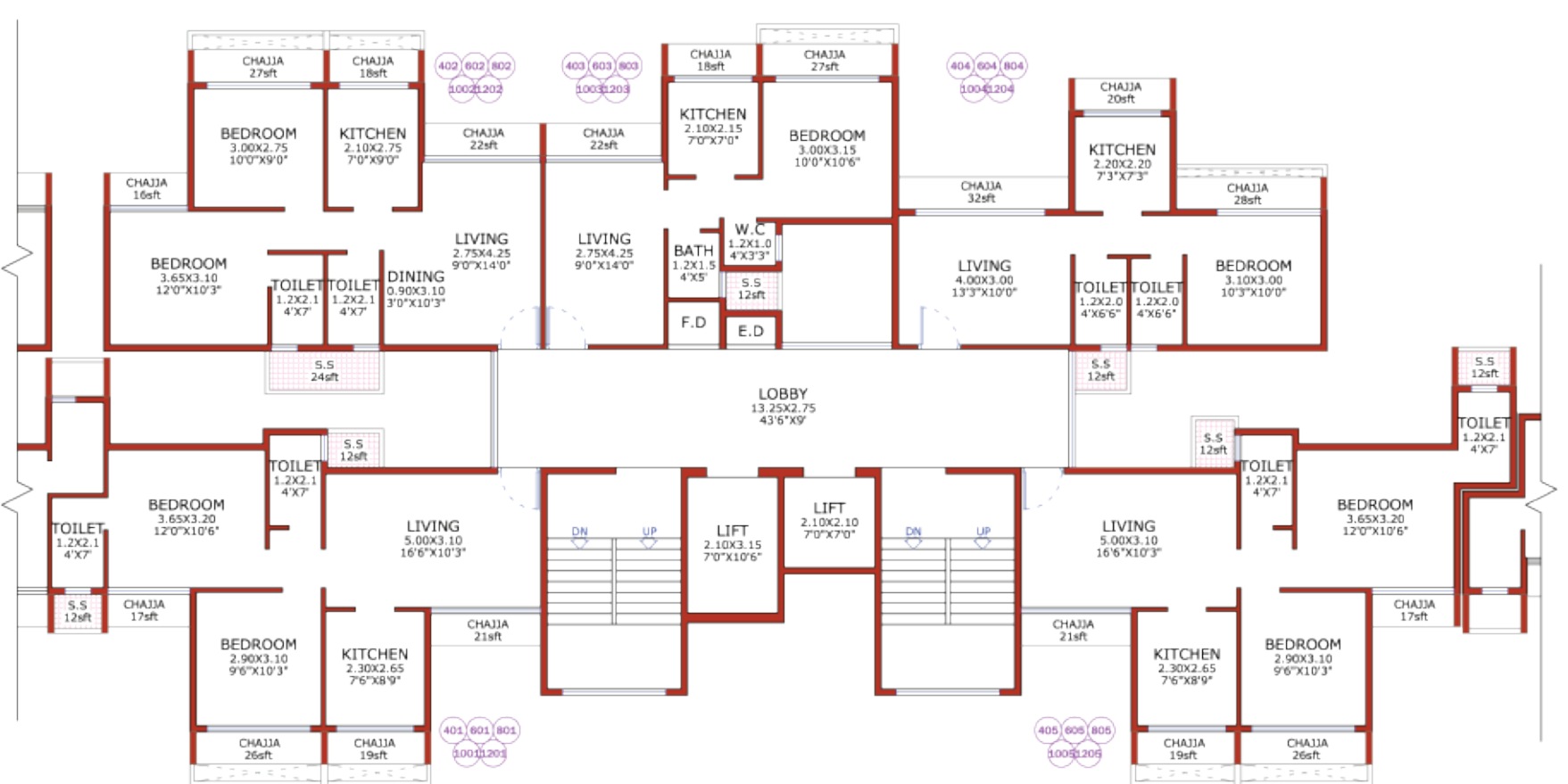
(Floors - 3rd, 5th, 7th, 9th, 11th & 13th)



Typical Floor Plan

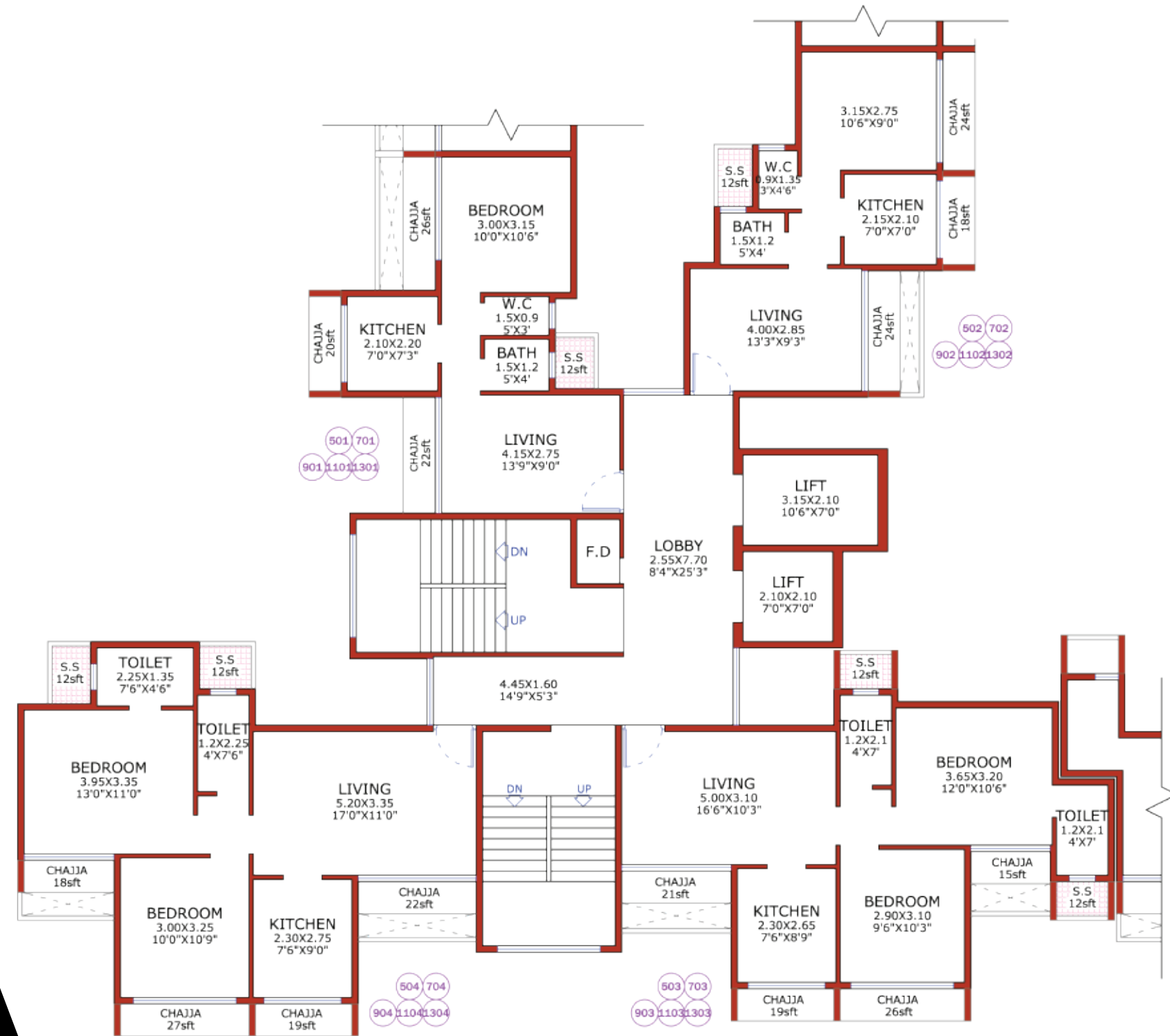
D Wing

(Floors - 4th, 6th, 8th, 10th & 12th)



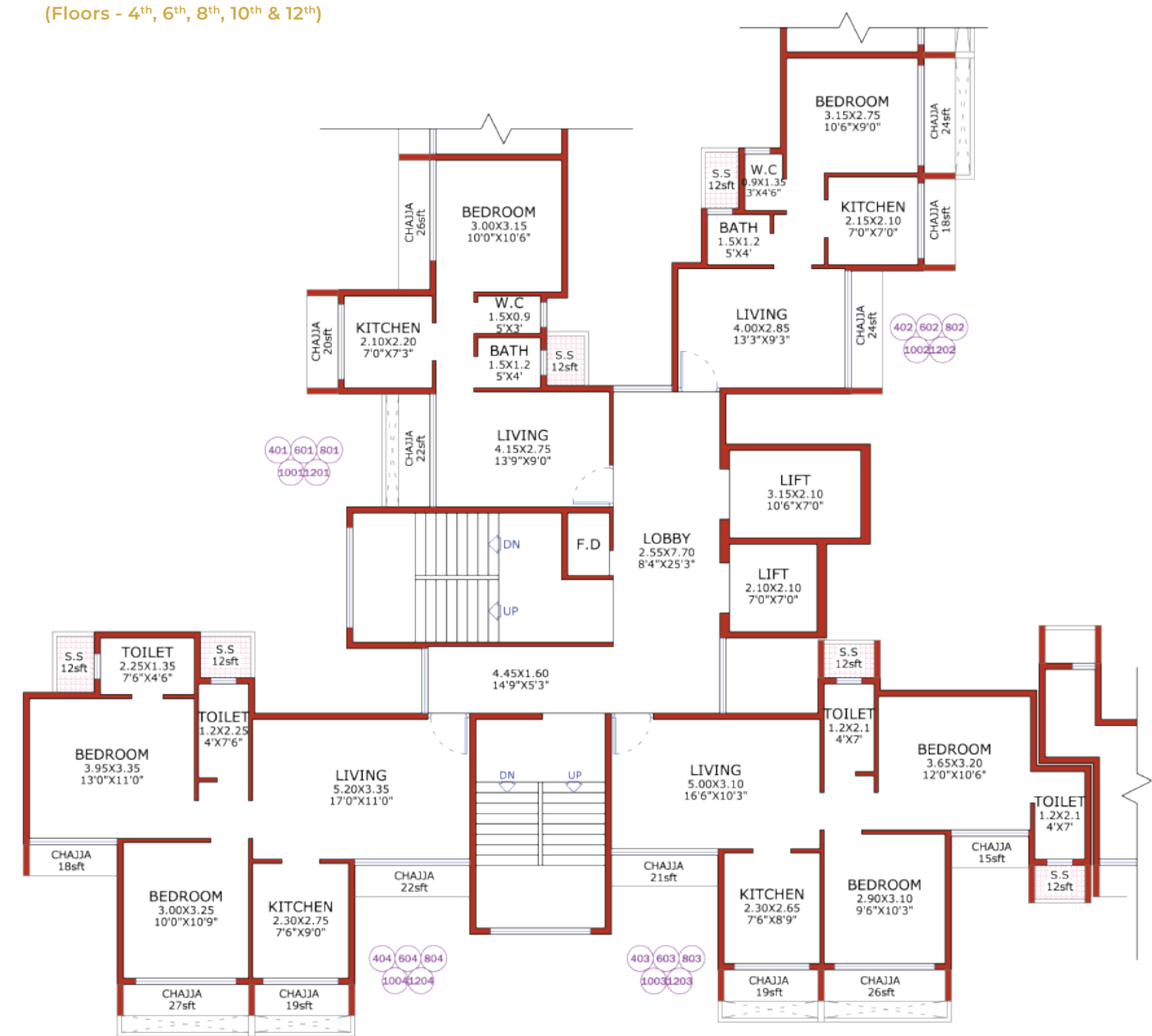
**Typical Floor Plan
B & E Wings**

(Floors - 3rd, 5th, 7th, 9th, 11th & 13th)



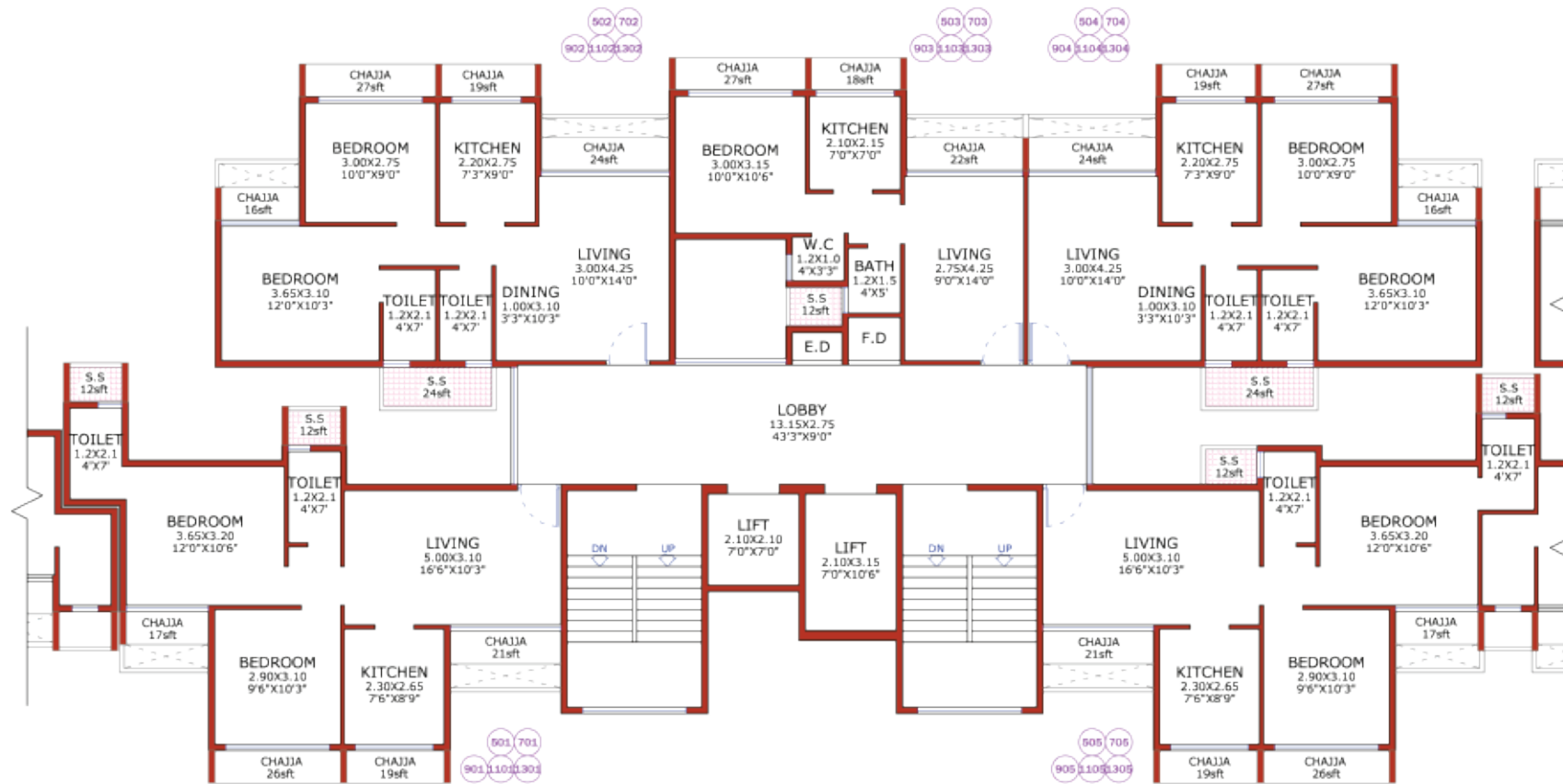
**Typical Floor Plan
B & E Wings**

(Floors - 4th, 6th, 8th, 10th & 12th)



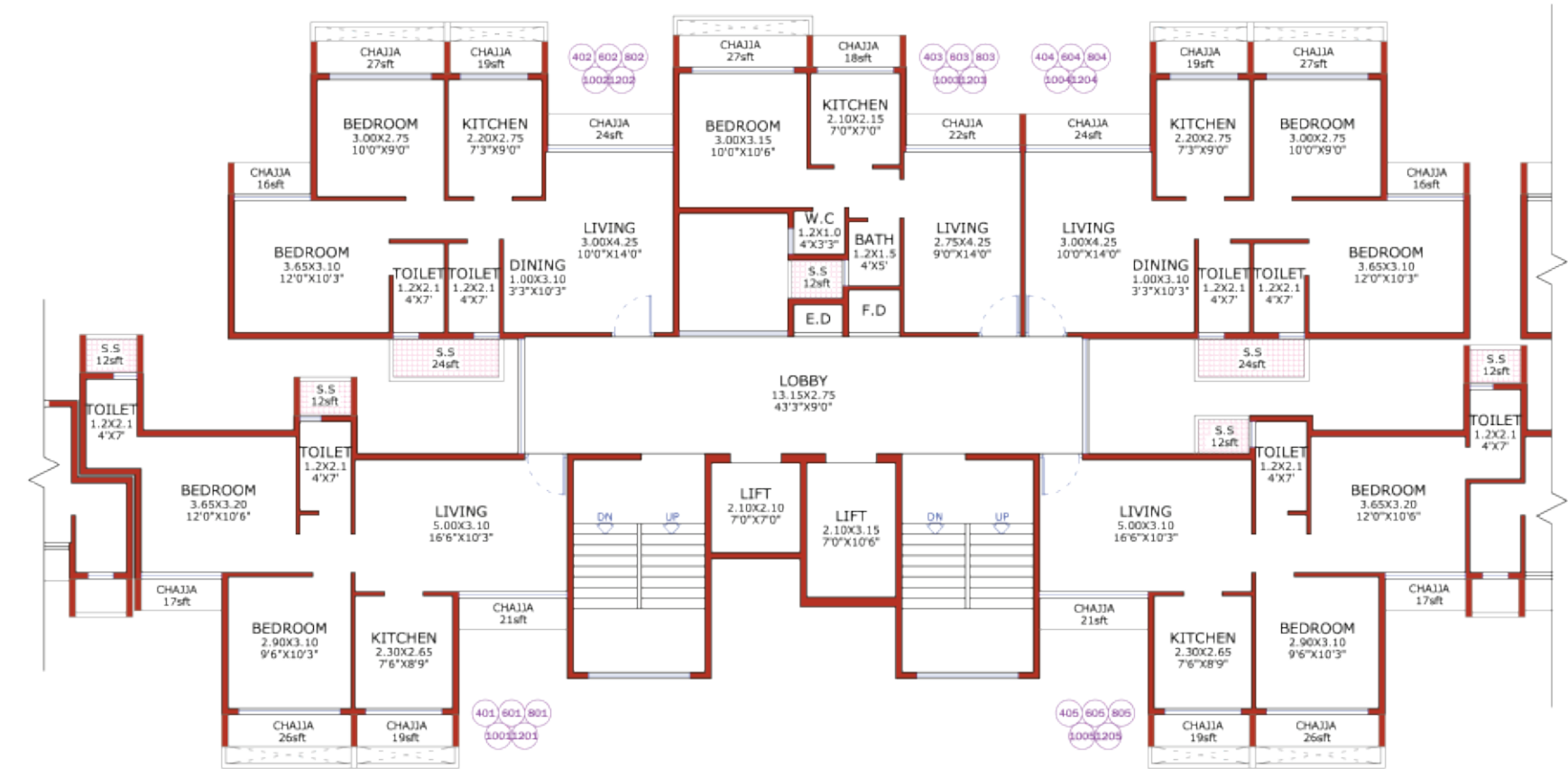
Typical Floor Plan
C Wing

(Floors - 3rd, 5th, 7th, 9th, 11th & 13th)



Typical Floor Plan
C Wing

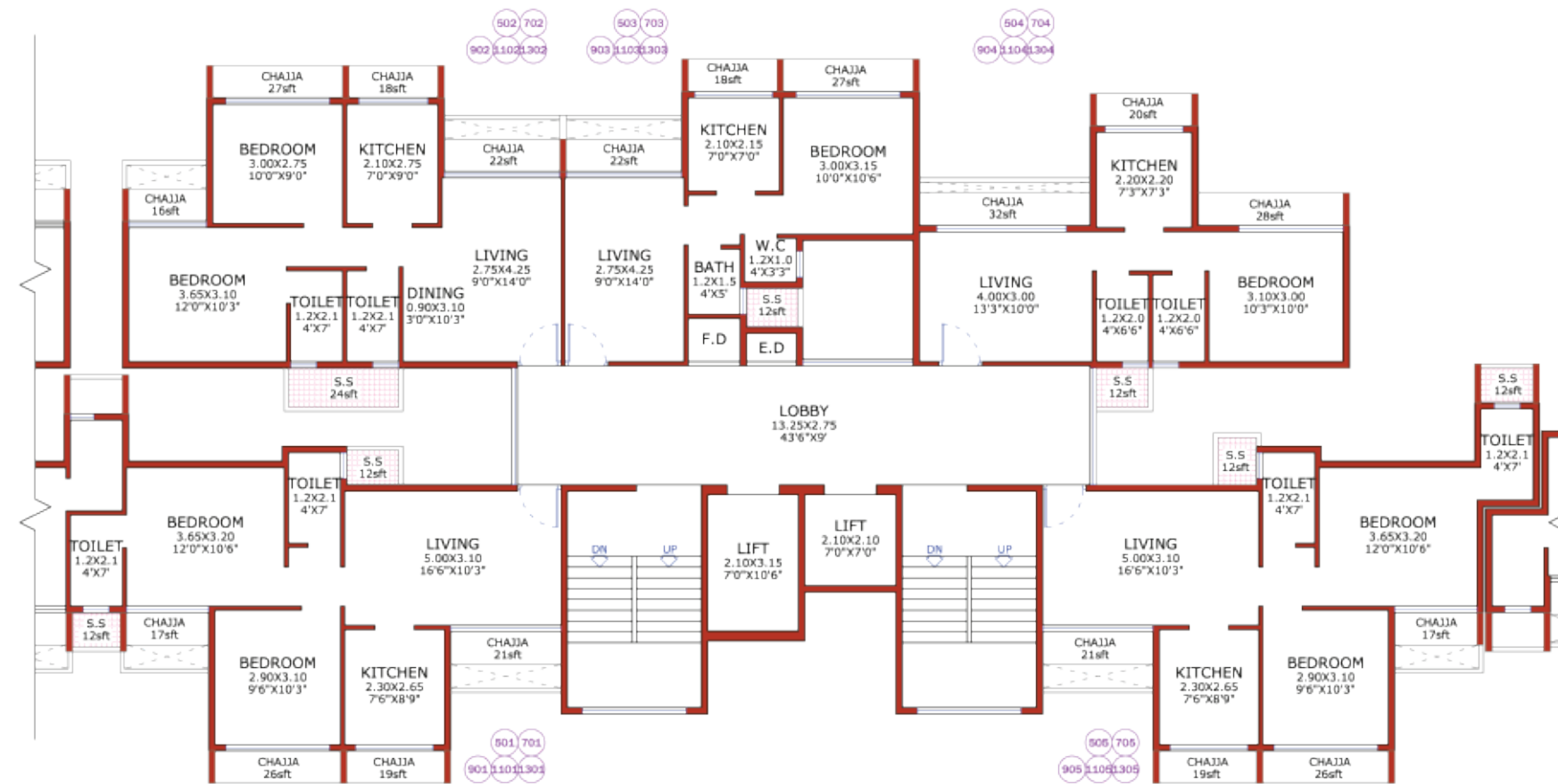
(Floors - 4th, 6th, 8th, 10th & 12th)



Typical Floor Plan

D Wing

(Floors - 3rd, 5th, 7th, 9th, 11th & 13th)



Typical Floor Plan

D Wing

(Floors - 4th, 6th, 8th, 10th & 12th)



1 BHK Isometric Layout



2 BHK Isometric Layout

