



**THE CUBIX**  
2,3,4 Bedroom Apartments



CONTEMPORARY, SENSITIVE, ARTISTIC, SYSTEMATIC  
HOUSING WITH INSPIRATIONS FROM THE RUBIX CUBE





# the view

SPREADING HORIZON  
IT'S THE WHOLE WORLD



It is crafted to utilize the space to its optimum, and to spread the technology, freedom and growth throughout all the floors as well as the macro details. An outstanding sense of freedom and abundant structure design is what is to be achieved.

Designed by a highly experienced design team, the philosophy behind CUBIX is to provide an ultimate lifestyle for the residents through design and open green spaces. These homes provide residents with a sophisticated, harmonious and gracious elegance. The apartment is a modern blend of technology, design and aesthetics to create a contemporary lifestyle.

- CONVENIENT SHOPPING
- JOGGING & WALKING TRAILS
- PARKS & PLAY AREA
- CLUB HOUSE
- EARTHQUAKE RESISTANT STRUCTURE
- 100% POWER BACK-UP FOR ESSENTIAL SERVICES
- 100% RAIN WATER HARVESTING
- GATED COMPLEX
- CCTV AND INTERCOM FACILITY





Maximize living covered space - bring inspiration from the urban dimensions of TheCube Cube.

With the Cube Cube, one can arrange the various color units in numerous positions within the fixed framework. When designing the **CUBIX**, we have used a wider framework to design and place the various components which facilitate a fluid and progressive scheme.

The functional result is reflected in the plans which display extremely well-purposed connections within the various spaces.

The fact that almost all components are multiples of a standard unit which is a unit of 250 x 115 mm results in a very interesting aesthetic on the inside as well as on the outside dimensions of a Cube Cube. The grid system also provides the means to vary functional, systematic and logical arrangements and arrangements.

**THE MOST CONTEMPORARY  
LIVING PARADISE**



# 54 ways to move

© DHARUHERA



From common need to highly sophisticated, from prime to a vibrant urban experience, from a living space, Dharna to move **CUBIX** is proud of transforming your view of the world as the way the world sees you.

The Cube is a part of becoming a leading residence of luxury & lifestyle living and architecture excellence in Dharna to move **CUBIX** is proud of transforming your view of the world as the way the world sees you.

# descriptions

FEAST FOR YOUR EYES  
AND BRAIN



## A FUTURISTIC DESTINATION

**CUBIX** is strategically located on the IIR, surrounded by amenities, Educational Institutes, shopping centers, schools, hospitals, etc. [www.cubixapartments.com](http://www.cubixapartments.com)

Located on IIR, Delhi-Jaipur Highway, just 75 km from Delhi and 35 km from Gurgaon, Dherowala is truly one of the fastest growing towns in the country. Surrounded by flourishing industrial zones of IIT Madras, NICO Bhopal, Haldipura, Chhapra, Sapana, Feroz, Bawal, Newsonia, the location is surrounded by many large manufacturing units.

The upcoming Kundli-Manesar-Palwal (KMP) expressway and the development of Delhi-Mumbai Industrial Corridor (DMIC), along with the construction and development work of 75 meter wide outer peripheral road connecting NH-10 to Delhi-Jaipur highway, would increase the demand for quality housing in the region.

With the increase in industrial activity and growth in the demand for quality housing, the real estate sector is on the verge of another major boom in the region.

- DHOLA KILAN - APPROX. 55 MINUTES
- INTERNATIONAL AIRPORT - APPROX. 50 MINUTES
- RAJIV CHOWK - APPROX. 35 MINUTES
- HALDIPUR - APPROX. 30 MINUTES
- IIT MANESAR - APPROX. 25 MINUTES
- BHIWADI - APPROX. 5 MINUTES
- INDL. AREA BAWAL - APPROX. 15 MINUTES
- INDL. AREA NEEMRAMA - APPROX. 18 MINUTES



# NO DIVISIONS

FLOOR TO ROOF  
GRILLS TO WALL



**CUBIX** will be a world of ideas in space, living and promise. It is a statement measure of sophistication, serenity and excellent. Every window will frame the exterior like a fine-lined painting and every ingress will bring an abundance to each part of living.

Space opens into a meaningful form with careful planning and designing.

The world of nature, urban and suburban evokes a cerebral sensation and experimental motifs and progress with the planet. <http://www.cubix.com>

- VASTU FRIENDLY LAYOUT
- SPACIOUS ENTRANCE
- LARGE BALCONIES
- SPACIOUS ROOMS
- PLENTY OF CROSS VENTILATION



# gratifications

WALK ON GREENS AND TALK TO NATURE

THE  
**CUBIX**  
2,3,4 Bedroom Apartments

Observe how 'Green & Green' and 'Green Sky' across a magical canvas of sparkling surroundings!

Landscaping and parks will be covered by green and all, not wanting them to lose a pure and delightful life. Witness the happiness and their bliss on the innocent faces of sparkling children who respond their delightful activities in a beautiful setting.

Beats in rich and unadorned air to pamper your system... Small the programs of attraction flowers to some parts of individual beauty.

- EXQUISITE LANDSCAPING
- WATER FEATURES
- JOGGING TRACK
- AMPLE CAR PARKING
- RAIN WATER HARVESTING
- RECYCLING OF WASTE WATER





# specifications

<b>SUPERIOR APARTMENTS</b>	Developed Project 4/12/11, Phase 02/2011
<b>GENERAL</b>	
Type	Medium Rise
Site	400' x 100' with 10' setback, overhead & underground parking
Colony	400' x 100'
<b>RESIDENCE</b>	
Type	Medium Rise
Site	400' x 100' with 10' setback, overhead & underground parking
Colony	400' x 100'
<b>APARTMENT</b>	
Type	400' x 100' (approx) 100'
Work / Comp	100'
<b>UNIT / APARTMENT</b>	400' x 100' (approx) 100'
<b>APARTMENT</b>	
Site	400' x 100' (approx) 100'
Work / Comp	100'
Colony	400' x 100'
Energy / Power	100' x 100' (approx) 100'
<b>FINISHES</b>	
Work	Concrete / Tile up to 10' height
Type	400' x 100' (approx) 100'
Colony	400' x 100'
Energy / Power	100' x 100' (approx) 100'
<b>MECHANICAL</b>	
Work	400' x 100' (approx) 100'
Energy / Power	100' x 100' (approx) 100'
<b>ELECTRICAL</b>	
Work	400' x 100' (approx) 100'
Energy / Power	100' x 100' (approx) 100'

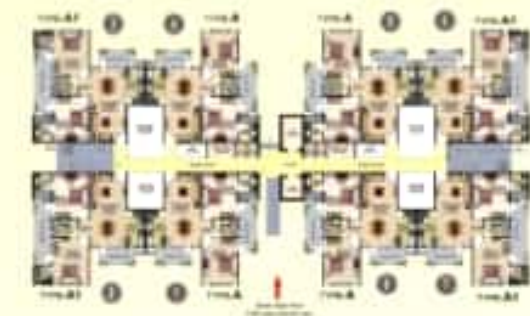


# siteplan





# Type A - A1 floor plans



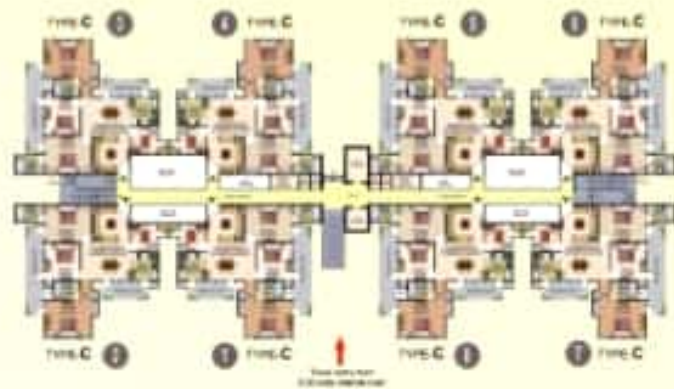
**2 BEDROOMS UNIT**

# Type C floor plan



Super Area : 1725 SQ. FT.

**4 BEDROOMS UNIT**

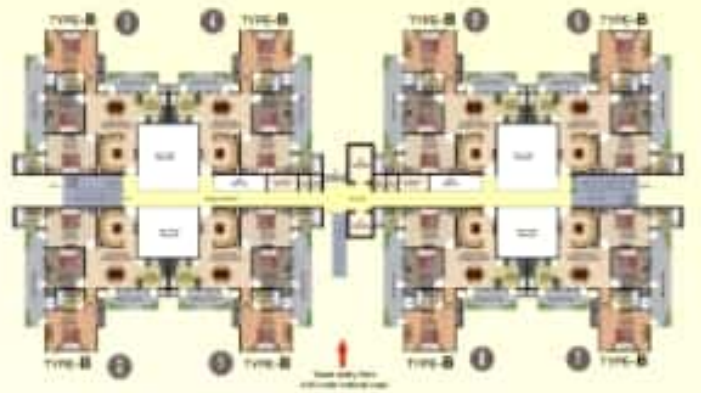


# Type B floor plan



Super Area : 1600 SQ. FT.

**3 BEDROOMS UNIT**



#### OUR ARCHITECTS



#### S.K. INTEGRATED CONSULTANTS

280, Deepali Enclave, Pitampura, Delhi-110034

Phone : +(91 11) 27023208, 27022973

Telefax : +(91 11) 27022973, M : 9810363993

E-mail : skintegrated@yahoo.com

SKIC is a very reputed professional group with International exposure and experience who carry out projects ranging from Master plans, Large scale housing, Institutional projects, Commercial buildings, Corporate offices, Healthcare facilities, Hotels and Exquisite interiors etc.

Any project with which SKIC gets associates is assured of good quality and becomes a premium value project.



Builder & Promoters

#### ASHIANA REALTECH PVT. LTD.

ADD. : BN-57, (EAST) SHALIMAR BAGH, DELHI - 110088, INDIA

PH. : 011-47094901-3 FAX : 011-47094906

WEBSITE : [www.dwarkadhiscity.com](http://www.dwarkadhiscity.com)

Note : Visual representations shown in this brochure are purely conceptual. All Building Plans, Specifications, Layout Plans etc. are tentative and subject to variation & modification by the company or the competent authorities sanctioning plans. Brand names appearing in the brochure are for artwork purposes only.

