

PROJECT BY:- MAA DEVELOPERS

WELCOME TO HAPPY LIVING...



RERA NO.:-

RERA Website:- [www.gujrera.gujarat.gov.in](http://www.gujrera.gujarat.gov.in)

**1 & 2  
BHK  
FLATS  
&  
SHOPS**



## Inviting You to The Dreamland of Luxuries

Mustafa Ali is a beautiful world without limits where architectural design,  
urbane luxury lifestyle and nature all come together.





Entrance Gate



CCTV Camera



Auto Door Lift



Parking Space

## Spectacular Entrance For splendid arrival

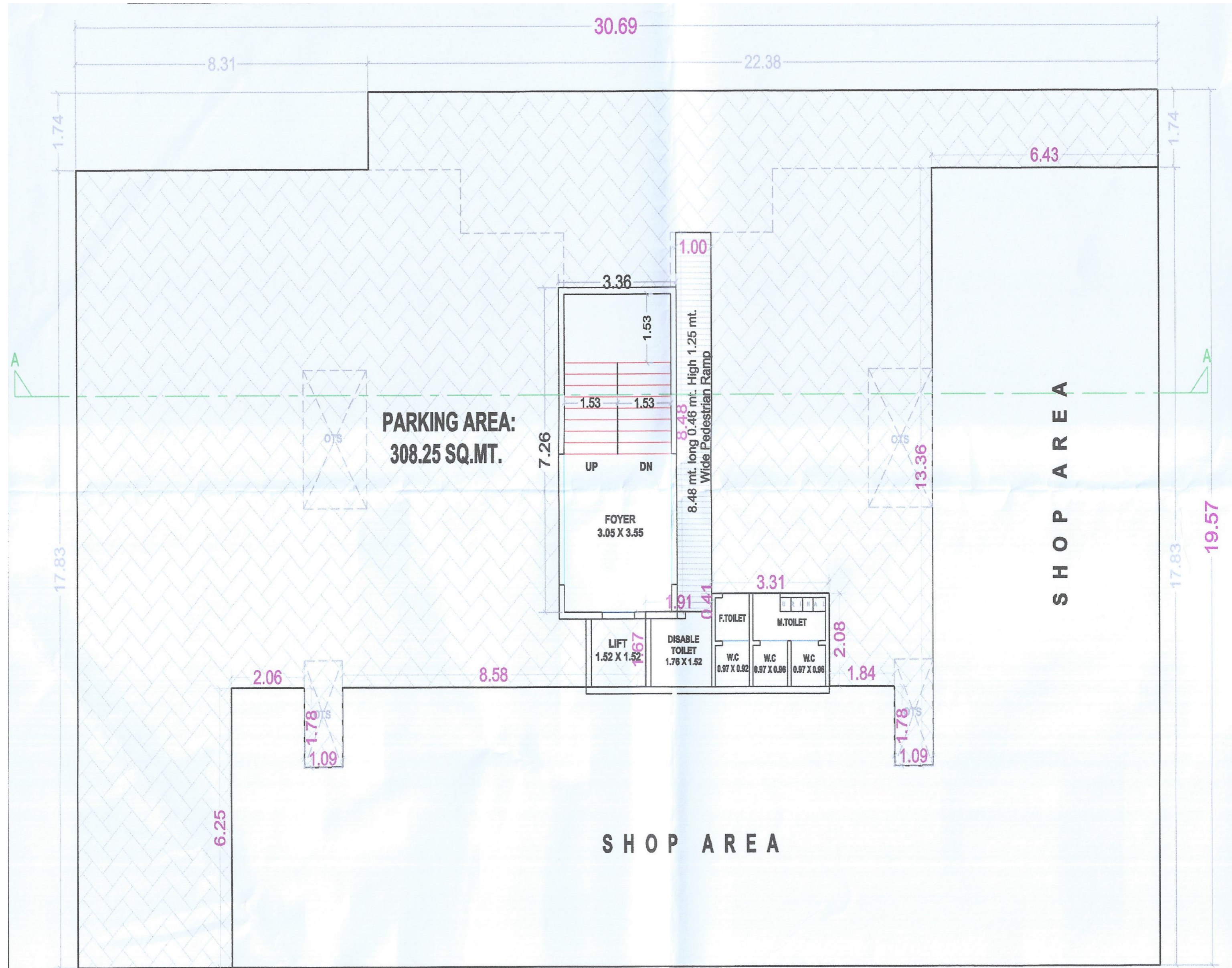
The entrance exuding a welcoming elegance greets you as you make your way into the realm of sheer affluence and bliss.





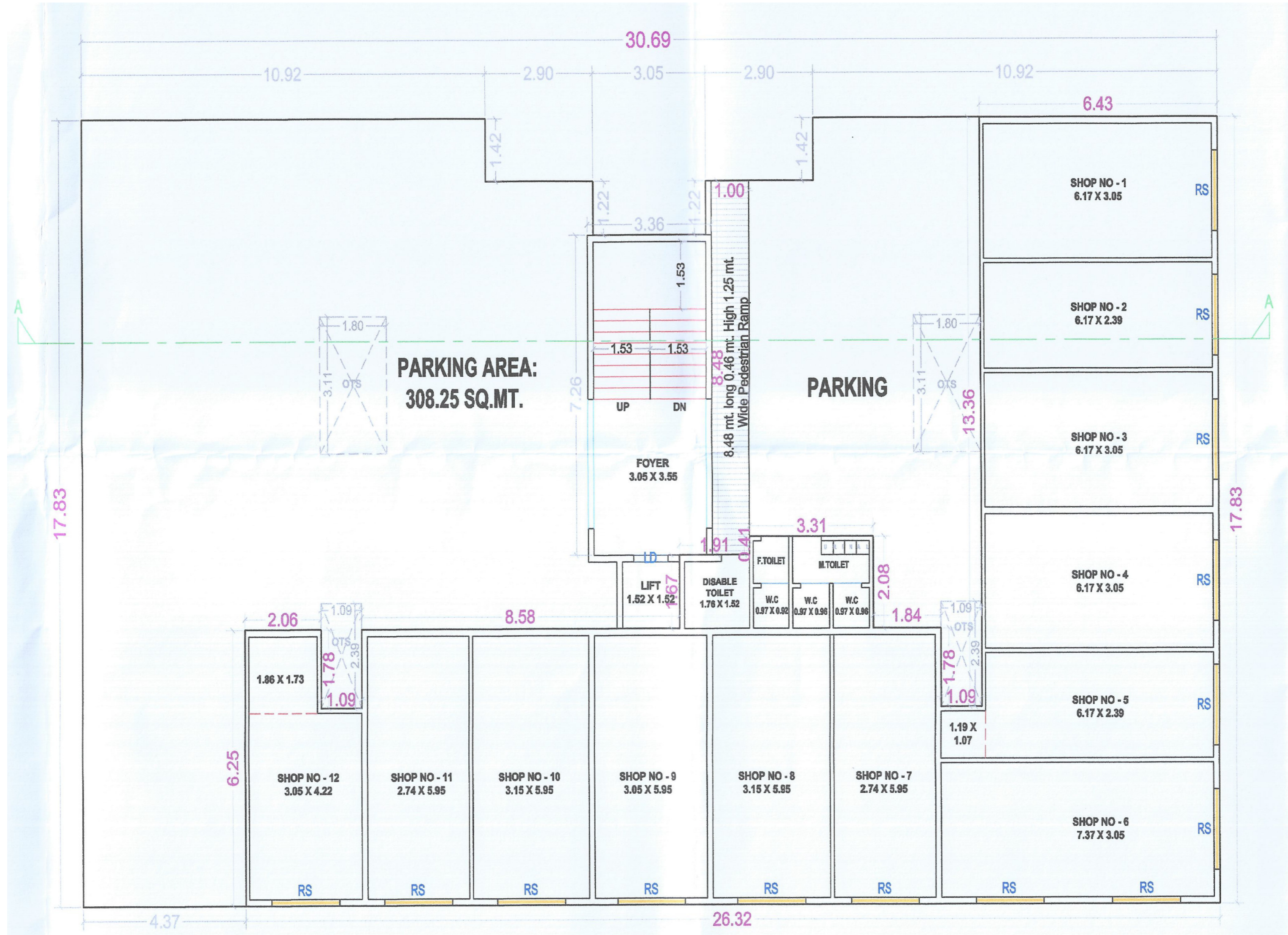


# GROUND FLOOR PARKING PLAN



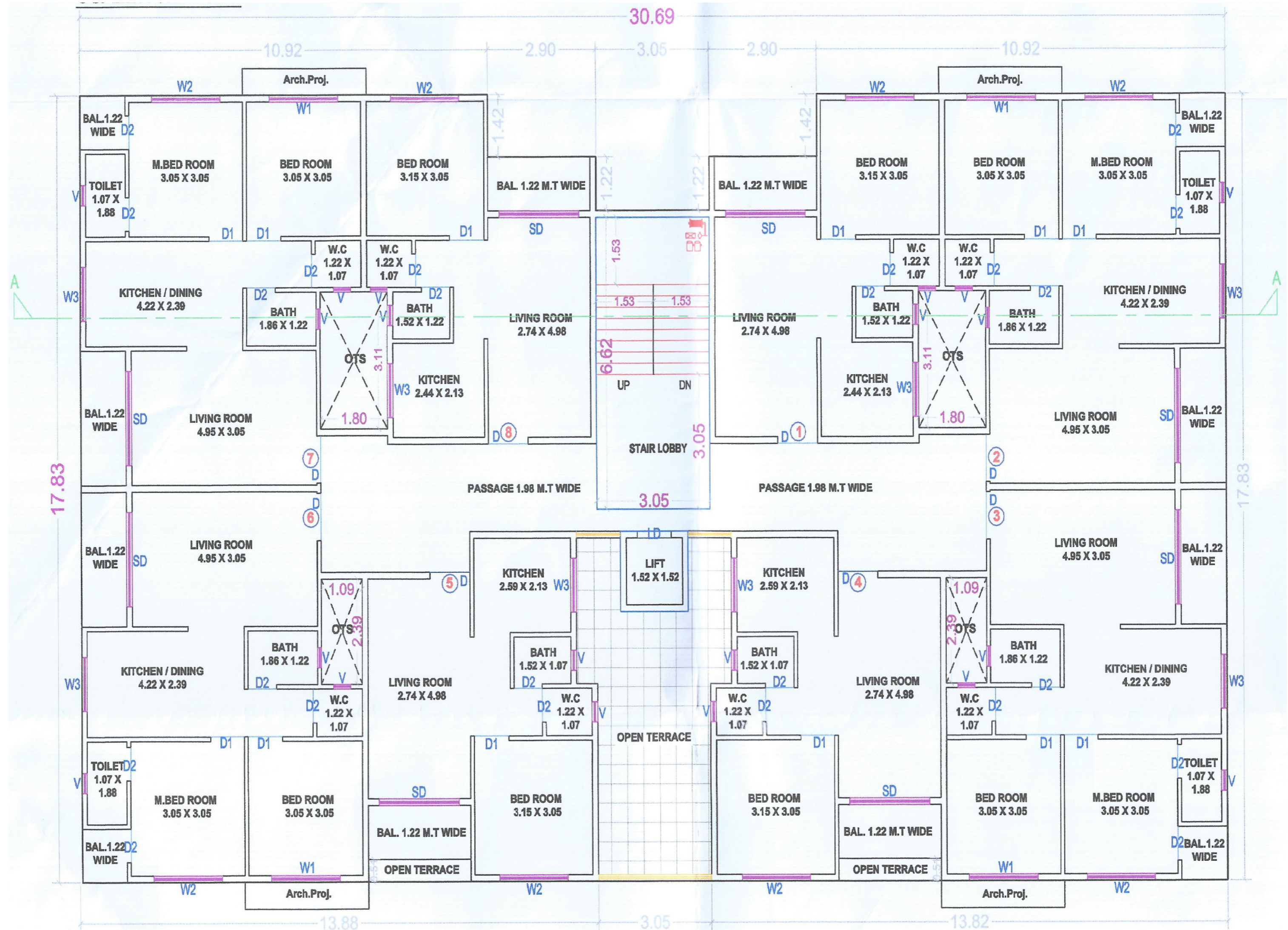
GROUND FLOOR PARKING PLAN

# GROUND FLOOR PLAN



**GROUND FLOOR PLAN**

# TYPICAL FLOOR PLAN :- 1st FLOOR



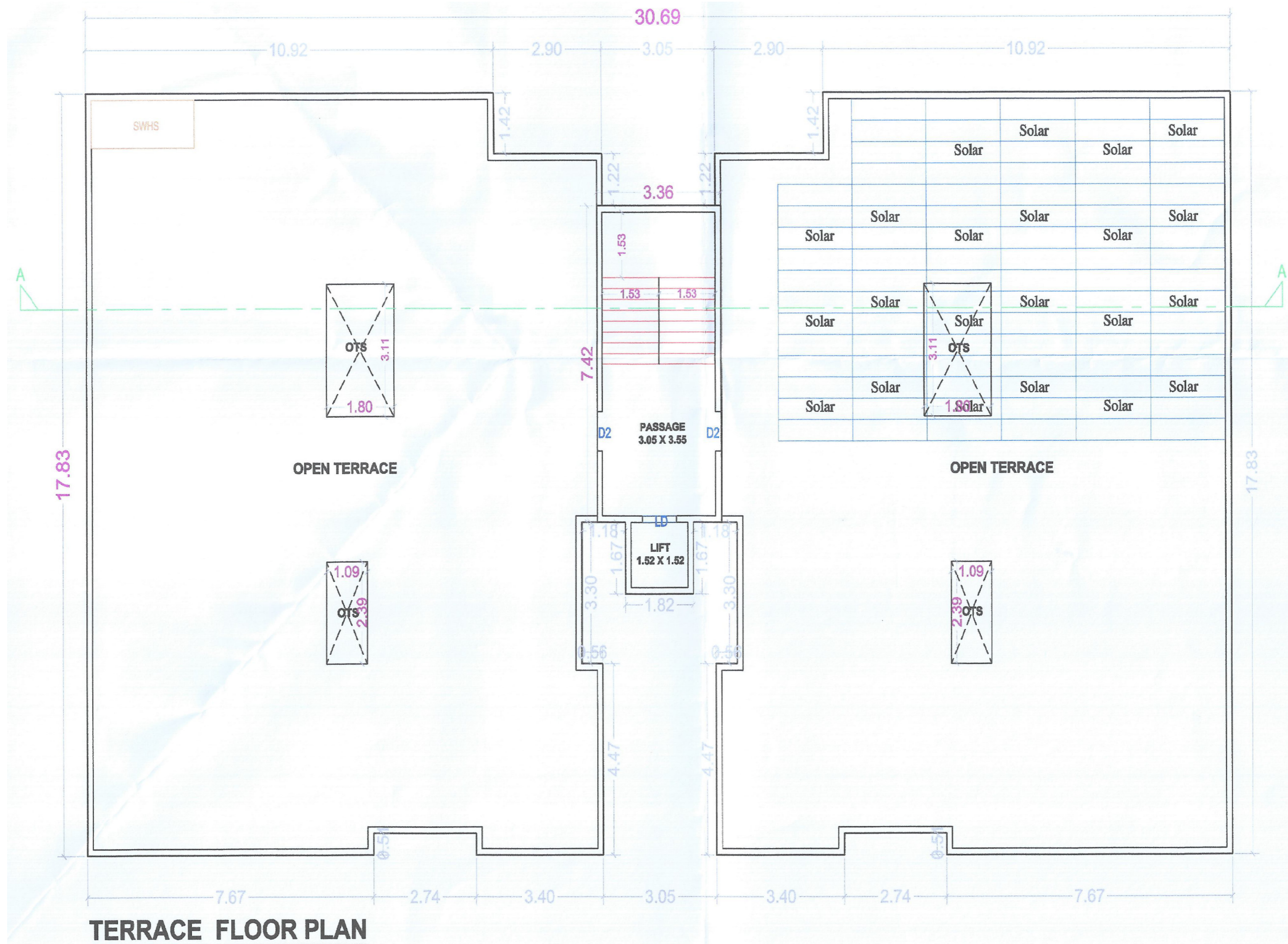
1st FLOOR PLAN

# TYPICAL FLOOR PLAN:- 2nd TO 4th FLOOR




2nd , 3rd & 4th FLOOR PLAN

# TERRACE FLOOR PLAN




**TERRACE FLOOR PLAN**

# Specification

- 
**FLOORING**
  - Living room, Kitchen and bedroom 24"x24" vitrified tiles for flooring

---

- 
**KITCHEN**
  - Granite kitchen platform with SS sink

---

- 
**DOORS**
  - Decorative main door with stone framing for all doors


---

- 
**WINDOWS**
  - Aluminium section windows with granite sill

---

- 
**ELECTRIFICATION**
  - Concealed Circuit wiring of standard (ISI MARK) Company with modular switches and MCB with ELCB


---

- 
**PLUMBING**
  - Concealed plumbing with standard sanitary ware & C.P. fitting, CPVC & UPVC pipes for water supply, PVC pipes for drainage


---

- 
**TOILET**
  - Decorative tiles dado up to lintel level in all toilets

---

- 
**COLOUR**
  - Building finished with standard quality paint, inside putty, out side weather proof colour
  - Exterior paint with 8 years warranty


---

- 
**LIFT**
  - Premium quality lift with safety device in case of emergency

---

- 
**WATER SUPPLY**
  - Overhead water tank & underground water tank of suitable capacity

---

- 
**GENERATOR**
  - Generator for sufficient power backup for common area of building and lift

---

- 
**TERRACE**
  - Reduce the heat up to 5 degree at terrace by chemical painting

# Location Map



**Address**  
 SR No. 3048, Plot No. 9,  
 Nr. Bhavna Roadways, Vapi-Nashik Highway,  
 Dungri Faliya, Vapi.

**Contact**  
 98255 15875 | 87359 34359 | 87581 13283

Architect  
**ABHILASHA**  
 ARCHITECT

Legal Advisor  
**Dilip Sharma**  
 Vapi

A Project By

