



Privilege,
as the
Gateway to true
distinction.

Grandeur

at first light.

Inspired by the grandeur of Hyderabad, Brigade brings to you a truly momentous landmark, Brigade Gateway at Neopolis – an iconic architectural marvel set to become a beacon for the truly discerning and turn into the city's new center of culture, commerce, and distinguished living.

Masterfully designed, it etches the skies with the iconic World Trade Center, the luxurious InterContinental Hotel, the city's grandest retail destination in the form of the Orion Mall, and signature living with ultra-premium Private Residences.

It's the Gateway to a new world of privilege, privacy and pride, just as grand as Hyderabad demands it.



Your corner of the planet.

9.7 acres, to be precise.

Standing with quiet confidence, Brigade Gateway at Neopolis is poised to become Hyderabad's most sought-after neighbourhood. Spread across 9.7 acres, it is a first-of-its-kind integrated, self-sustained township in the city, offering an exquisite living experience, bringing together residential, commercial, hospitality and retail, all in one expansive location. Its signature living spaces embody the city's Nawabi regality with its exemplary architecture, spectacular views, unparalleled amenities & personalised services.

Needless to say, it's reserved for the crème de la crème.





From The Chair

Dear Patron,

It gives me immense pleasure to introduce **Brigade Gateway at Neopolis, Hyderabad** - a landmark project that will set a new standard in exquisite design and global experiences.

While we are excited about this first mixed-use development in Hyderabad, it is also an experience close to four decades in the making. Since 1986, **Brigade Group** has not only created trendsetting projects and marquee developments but has also emerged as the pioneer in integrated lifestyles - a unique experience of work, life, and play, all co-existing seamlessly in one campus.

Hyderabad, a city known for its rich history and remarkable growth, deserves nothing less than a development that mirrors its grandeur. Brigade Gateway, inspired by the cultural and architectural legacy of this extraordinary city, is our tribute to its evolving skyline. This integrated township caters to the most discerning, designed to offer residents, businesses and visitors an experience that is both contemporary and timeless.

At the core of this project is the iconic **World Trade Center, Hyderabad**. With its global reputation for excellence in business and commerce, it will bring international standards to Hyderabad's corporate sector, fostering innovation, collaboration and growth. We are proud to add Hyderabad to the select cities around the world that are part of this prestigious network, further elevating the city's status as a global business destination.

Complementing the World Trade Center are the ultra-premium homes – **Brigade Gateway Residences**. Meticulously crafted, these homes are not mere spaces to live in, but sanctuaries of privacy, comfort and exclusivity. Every detail has been carefully curated to meet the highest of standards, ensuring that residents experience the epitome of modern living.

Adding to the township's allure is the striking **Orion Mall**, set to be Hyderabad's premier shopping and lifestyle destination. Here, you will find the finest of global brands, dining experiences and entertainment options – all under one roof. Whether it's a leisurely day out with family or a quick shopping spree, Orion Mall will cater to every need with unmatched elegance and style.

For those seeking the finest in hospitality, the **InterContinental Hotel** within Brigade Gateway will offer luxury and comfort in a class of its own. With world-class service and amenities, it will cater to both the business and the leisure traveller, making it the preferred choice of visitors to the city.

Introducing a new world of privilege, privacy and pride, Brigade Gateway at Hyderabad draws inspiration from our Brigade Gateway campus in Bengaluru, which has transformed the city's aspirations at a global scale. We are confident that this project will do the same for Hyderabad, creating a new standard of culture, commerce and opulence.

It is with such a grand intent that Brigade Group invites you to become the first citizens of Brigade Gateway at Neopolis, Hyderabad.

M R Jaishankar
Executive Chairman, Brigade Group

A
Legacy
in continuum.

Since the start of our story, we've sculpted over 280 properties including grand villas, villaments, penthouses, premium residences, luxury apartments, value homes, urban studios, independent living for seniors, plotted developments, and mixed-use lifestyle enclaves & townships, that whisper tales of lives well lived.

Our portfolio also includes Grade A office spaces, hospitality chains, retail destinations and schools that stretch over 90 million sq.ft. (8.3 million sq.mt.). This extensive and diverse portfolio is a testament to the trust and value we have built over the years, fostering deep and lasting relationships with our clients and stakeholders.

But our journey is more than just a story of brick and mortar. Our not-for-profit trust, the Brigade Foundation has ignited minds through education and worked on community development, thereby contributing towards enriching the cultural fabric of the nation.

These past 4 decades have seen us carve out our mark on many a skyline, but we'd like to believe that our dawn has just begun. There's more that awaits you on the other side of the horizon.



The Gateway is one.

The worlds, there are many.



Private Residences



Luxury Hospitality



Global Business Center



Grand Retail





Success finds its true HQ.

With a presence in over 90 countries, the prestigious World Trade Center now makes its mark in Hyderabad at Brigade Gateway, Neopolis.

The most preferred hub for world-leading businesses, WTC is home to cutting-edge, innovative firms and a powerful network of professionals and entrepreneurs. As a member, you get to leverage WTC's valuable public & private resources and expertise to set yourself apart and gain competitive differentiation.





INTERCONTINENTAL®

HYDERABAD AT BRIGADE GATEWAY

Live the
InterContinental
life.

Business or pleasure, make it luxuriously memorable at InterContinental Hotels & Resorts, the leading hospitality group in the world. With over 6,000 hotels across the globe, InterContinental now enters Hyderabad with Brigade Gateway at Neopolis.

Offering personalised services and exclusive privileges, it serves as the perfect spot for the global elite; for professional meetings, intimate gatherings, grand celebrations, leisure or to stay.

ORION

MALL AT BRIGADE GATEWAY
NEOPOLIS

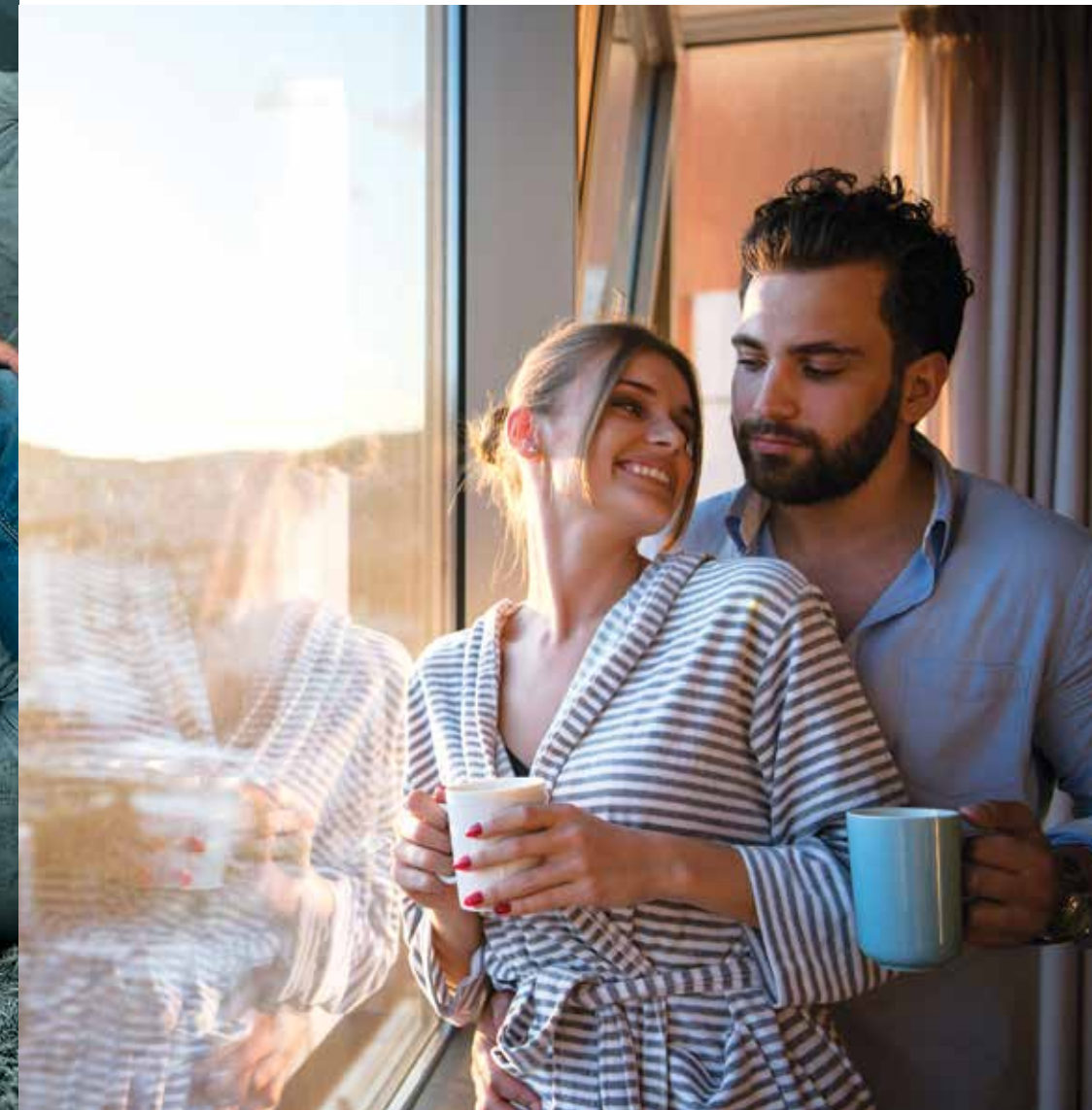
Deserve nothing less than the best of the world.

At a short stroll from your residential space lies Orion Mall, orchestrating for you an extraordinary experience, punctuated with the most coveted brands across the globe in fashion, lifestyle, electronics, et al.

Catering to the discerning ones, Orion is home to flagship stores, selective products, fine dining, year-long entertainment, and much more.

A day out here with your loved ones is time spent in a fine array of simple pleasures and premium indulgences.





BRIGADE
GATEWAY
RESIDENCES

True luxury is always private.

The Private Residences at Brigade Gateway are a bespoke island of luxury, designed to indulge your finer tastes. Spaciousness at the edge of lavish, grandeur on the spectrum of royalty and thoughtfulness in the realm of art.

Exclusivity, at its most refined.



G+57 floors
residential towers



Expansive
city views



East and
West-facing homes





The information depicted herein viz. master plans, floor plans, furniture layout, fittings, illustrations, specifications, designs, dimensions, rendered views, colors, amenities and facilities, etc., are subject to change without notifications as may be required by the relevant authorities or the Developer's architect and cannot form part of an offer or contract. Whilst every care is taken in providing this information, the Developer cannot be held liable for variations. All illustrations and pictures are the artist's impression only. The information is subject to variations, additions, deletions, substitutions and modifications as may be recommended by the company's architect and/or the relevant approving authorities. The Developer is wholly exempt from any liability on account of any claim in this regard. (1 square meter = 10.764 square feet). E & OE.

All your finer senses. Elevated.

We know you. You like the good life, the finer things - waking up to the wind whispering secrets in your ears, sunrays breaking in from the balcony, dipping your toes in cool waters, talking in eloquent silences, watching raindrops run down a window pane, or lazing around with a book on a leisurely day.

With its avant-garde design, Brigade Gateway further extends the luxury you expect. Well-lit and ventilated with massive balconies and gorgeous views of the Neopolis skyline and Gandipet Lake, these residential spaces are designed for a truly elevated experience.





It's between you, the sky & the deep blue moment.

With ample creative spaces to relax and rejuvenate, a sense of well-being comes naturally to you at Brigade Gateway Residences. Walk, run, or ride a bike. Hit the gym. Get energetic at the sports and fitness area or dive into the lap pool. There's also a tot lot for your little ones. Built at the nexus of leisure and luxury, it promises to nourish your soul and lift your spirits.





The Gateway of grand possibilities.

Brigade Gateway will bring a noteworthy convergence of the finest and grandest in culture, commerce and lifestyle. With its imposing presence and 360° connectivity to everything that matters, it is destined to transform the locality into a thriving ecosystem and turn it into Hyderabad's most prominent landmark, in no time.

At the center of attention.
(There's no other way you'd want it.)

Neopolis, Kokapet

Kokapet is Hyderabad's most sought-after location today. Planned across 530 acres in Kokapet, is Neopolis, a smart, sustainable urban development, the first-of-its-kind the country has seen. Defining the city's skyline, Neopolis promises incredible business and investment opportunities.

Emerging as Hyderabad's next landmark, Neopolis is setting new milestones in technology and infrastructure, be it the wide internal roads with a multiple lane carriageway and pedestrian amenities or electrical substations with underground cabling along with proximity to key landmarks and connectivity to the 8-lane Nehru Outer Ring Road.

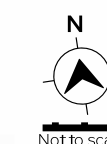
Brigade Gateway at Neopolis makes for an ideal lifestyle in a stellar location.

5 minutes to the American Consulate.

Within a 5 km radius of Fortune 500 companies – Amazon, Google, Microsoft, Ikea, et. al.

Hospitality – Marriott, Sheraton, Hyatt, and more.

Schools – Indus, Oakridge, CHIREC, Rockwell International, Birla Open Minds, et. al.



Not to scale

An ensemble of niceties.

At your service.

Gourmet Atelier
Supermarket

The Marquis Room
Mini Theatre

The Games Lounge
Board & Indoor Games Room

The Ping Pong Suite
Table Tennis Room

The Shuttle Pavilion
Badminton court

The Squash Arena
Squash Court

Artemis Aerobics Studio
Aerobics Area

House of Commons
Co-Working Space

The Regent's Gymnasium
Gym

The Mayfair Pool
Swimming Pool

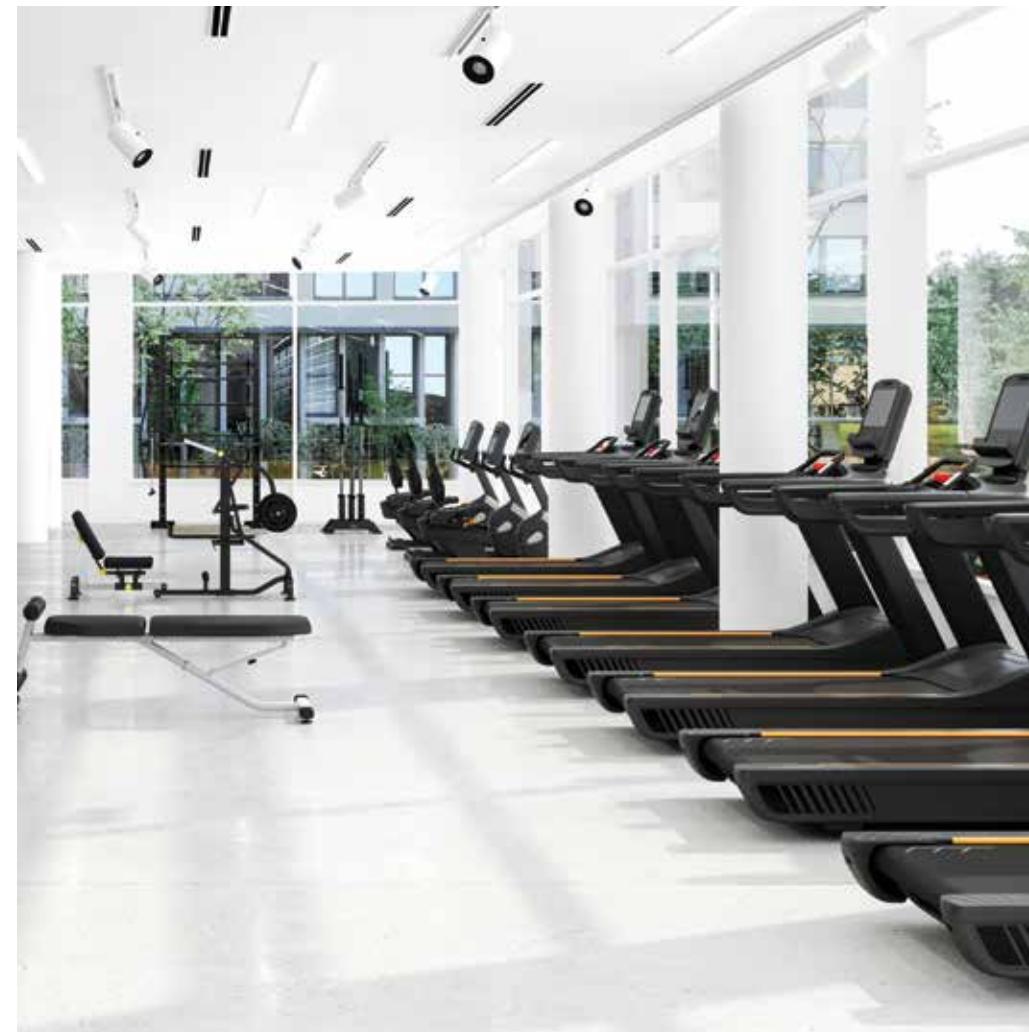
Café Royale
Coffee Station

The Churchill Chamber
Conferencing Facilities

Monet Atrium
Exhibit Space

Ballroom
Multipurpose Hall

Li'l Blooms
Crèche





Legend

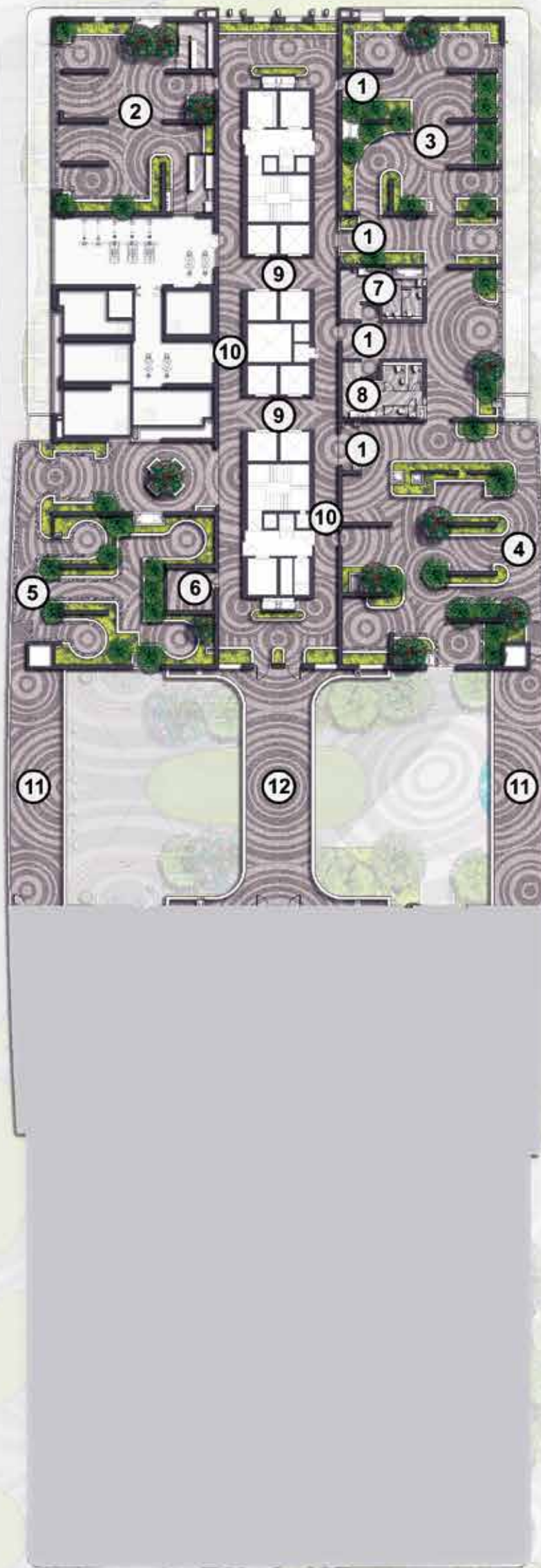
- | | |
|---------------------------------|---------------------------------------|
| 1. Arrival Plaza | 13. InterContinental Banquet Drop-Off |
| 2. Drop-Off Plaza | 14. InterContinental Hotel Drop-Off |
| 3. Plaza Feature | 15. Residents' Pedestrian Entry |
| 4. Children's Play Zone | 16. Connecting Plaza |
| 5. Outdoor Gym | 17. Entry/Exit |
| 6. Clubhouse | 18. Water-Wall Feature |
| 7. Amphitheater | 19. Garden-Wall Feature |
| 8. Mall & Hotel - Entry/Exit | 20. Quiet Corner |
| 9. Event Plaza | 21. Outdoor Seating |
| 10. Multi-Purpose Court | 22. Residential Tower A |
| 11. Orion Mall Drop-Off | 23. Residential Tower B |
| 12. World Trade Center Drop-Off | 24. Retail - Commercial - Hotel Tower |

Designed for
discernment.
Precision & Detail.



The information depicted herein viz. master plans, floor plans, furniture layout, fittings, illustrations, specifications, designs, dimensions, rendered views, colors, amenities and facilities, etc., are subject to change without notifications as may be required by the relevant authorities or the Developer's architect and cannot form part of an offer or contract. Whilst every care is taken in providing this information, the Developer cannot be held liable for variations. All illustrations and pictures are the artist's impression only. The information is subject to variations, additions, deletions, substitutions and modifications as may be recommended by the company's architect and/or the relevant approving authorities. The Developer is wholly exempt from any liability on account of any claim in this regard. (1 square meter = 10.764 square feet). E & OE.

Images are indicative of lifestyle. Product may vary.



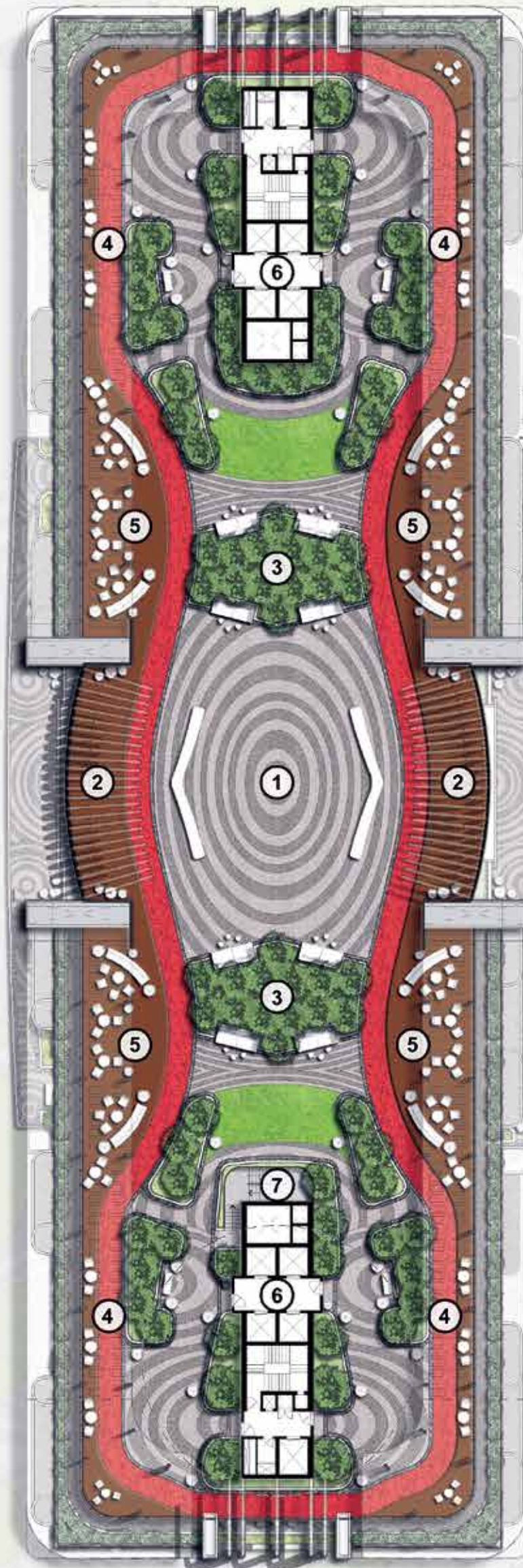
Oasis Level - 33rd Floor

Legend

1. Entry
2. Yoga Zone
3. Picnic Area
4. Outdoor Working Space
5. Reading Nook
6. Pantry
7. Men's Restroom
8. Ladies' Restroom
9. Lift Lobby
10. Corridor
11. Connecting Bridge
12. Central Connecting Bridge with Security Gate



The information depicted herein viz. master plans, floor plans, furniture layout, fittings, illustrations, specifications, designs, dimensions, rendered views, colors, amenities and facilities, etc., are subject to change without notifications as may be required by the relevant authorities or the Developer's architect and cannot form part of an offer or contract. Whilst every care is taken in providing this information, the Developer cannot be held liable for variations. All illustrations and pictures are the artist's impression only. The information is subject to variations, additions, deletions, substitutions and modifications as may be recommended by the company's architect and/or the relevant approving authorities. The Developer is wholly exempt from any liability on account of any claim in this regard. (1 square meter = 10.764 square feet). E & OE.



Elysium Level - 58th Floor

Legend

1. Yoga Deck
2. Observation Deck
3. Daybed Lounge
4. Walking/Jogging Path
5. Outdoor Seating
6. Lift Lobby
7. Way to Helipad



The information depicted herein viz. master plans, floor plans, furniture layout, fittings, illustrations, specifications, designs, dimensions, rendered views, colors, amenities and facilities, etc., are subject to change without notifications as may be required by the relevant authorities or the Developer's architect and cannot form part of an offer or contract. Whilst every care is taken in providing this information, the Developer cannot be held liable for variations. All illustrations and pictures are the artist's impression only. The information is subject to variations, additions, deletions, substitutions and modifications as may be recommended by the company's architect and/or the relevant approving authorities. The Developer is wholly exempt from any liability on account of any claim in this regard. (1 square meter = 10.764 square feet). E & OE.



Luxury's
best laid plans.

Floor by floor.

Typical Floor Plan

Tower A

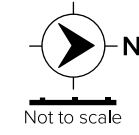
6 Cluster

1st - 15th, 17th - 24th, 26th - 32nd Floors

3 BED + FAMILY LOUNGE + STUDY + MAID'S ROOM / HOME OFFICE

3 BED + FAMILY LOUNGE + STUDY

4 BED + 3 TOILET + POWDER ROOM + FAMILY LOUNGE + MAID'S ROOM / HOME OFFICE



| EAST FACING | EAST FACING | EAST FACING |
|--|--|--|
| A 0101- A 1501/ A 1701- A 2401/ A 2601- A 3201 | A 0102- A 1502/ A 1702- A 2402/ A 2602- A 3202 | A 0103- A 1503/ A 1703- A 2403/ A 2603- A 3203 |
| TOTAL SBA- 3354 SFT | TOTAL SBA- 3078 SFT | TOTAL SBA- 4159 SFT |
| 1 | 2 | 3 |
| WEST FACING | WEST FACING | WEST FACING |
| A 0106- A 1506/ A 1706- A 2406/ A 2606- A 3206 | A 0105- A 1505/ A 1705- A 2405/ A 2605- A 3205 | A 0104- A 1504/ A 1704- A 2404/ A 2604- A 3204 |
| TOTAL SBA- 4123 SFT | TOTAL SBA- 3067 SFT | TOTAL SBA- 4175 SFT |
| 6 | 5 | 4 |

TOWER-A 6 CLUSTER LEVELS

4 BED + FAMILY LOUNGE + MAID'S ROOM / HOME OFFICE

3 BED + FAMILY LOUNGE + STUDY

4 BED + FAMILY LOUNGE + MAID'S ROOM / HOME OFFICE

The information depicted herein viz. master plans, floor plans, furniture layout, fittings, illustrations, specifications, designs, dimensions, rendered views, colors, amenities and facilities, etc., are subject to change without notifications as may be required by the relevant authorities or the Developer's architect and cannot form part of an offer or contract. Whilst every care is taken in providing this information, the Developer cannot be held liable for variations. All illustrations and pictures are the artist's impression only. The information is subject to variations, additions, deletions, substitutions and modifications as may be recommended by the company's architect and/or the relevant approving authorities. The Developer is wholly exempt from any liability on account of any claim in this regard. (1 square meter = 10.764 square feet). E & OE.

Typical Floor Plan

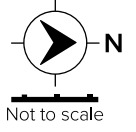
Tower A

5 Cluster
34th - 41st, 43rd - 50th Floors

3 BED + FAMILY LOUNGE + STUDY + MAID'S ROOM / HOME OFFICE

3 BED + FAMILY LOUNGE + STUDY

4 BED + 3 TOILET + POWDER ROOM + FAMILY LOUNGE



| | | |
|--|--|--|
| EAST FACING A 3401 - A 4101, A 4301 - A 5001 TOTAL SBA- 3354 SFT | EAST FACING A 3402 - A 4102, A 4302 - A 5002 TOTAL SBA- 3078 SFT | EAST FACING A 3403 - A 4103, A 4303 - A 5003 TOTAL SBA- 4159 SFT |
|--|--|--|



| | |
|--|--|
| WEST FACING A 3405 - A 4105, A 4305 - A 5005 TOTAL SBA- 4953 SFT | WEST FACING A 3404 - A 4104, A 4304 - A 5004 TOTAL SBA- 4980 SFT |
|--|--|

TOWER-A 5 CLUSTER LEVELS

4 BED + FAMILY LOUNGE + MAID'S ROOM / HOME OFFICE

4 BED + FAMILY LOUNGE + MAID'S ROOM / HOME OFFICE

The information depicted herein viz. master plans, floor plans, furniture layout, fittings, illustrations, specifications, designs, dimensions, rendered views, colors, amenities and facilities, etc., are subject to change without notifications as may be required by the relevant authorities or the Developer's architect and cannot form part of an offer or contract. Whilst every care is taken in providing this information, the Developer cannot be held liable for variations. All illustrations and pictures are the artist's impression only. The information is subject to variations, additions, deletions, substitutions and modifications as may be recommended by the company's architect and/or the relevant approving authorities. The Developer is wholly exempt from any liability on account of any claim in this regard. (1 square meter = 10.764 square feet). E & OE.

Tower A - Unit 1

Typical Unit Plan

3 Bed + Family Lounge + Study + Maid's Room / Home Office

East Facing : A 0101 - A 3201



Total SBA
3,354 SFT

Total Carpet Area
2,173 SFT

Tower A - Unit 2

Typical Unit Plan

3 Bed + Family Lounge + Study

East Facing : A 3402 - A 5102



Total SBA
3,072 SFT

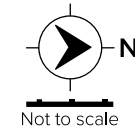
Total Carpet Area
2,024 SFT

Tower A - Unit 3

Typical Unit Plan

4 Bed + 3 Toilets + Powder Room + Family Lounge + Maid's Room/Home Office

East Facing : A 0103 - A 1503 / A 1703 - A 2403 / A 2603 - A 3203



TOWER A- 6 CLUSTER LEVELS
1ST FLOOR TO 15TH FLOOR,
17TH FLOOR TO 24TH FLOOR,
26TH FLOOR TO 32ND FLOOR

Total SBA
4,159 SFT

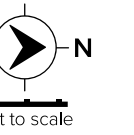
Total Carpet Area
2,743 SFT

Tower A - Unit 5

Typical Unit Plan

3 Bed + Family Lounge + Study

West Facing : A 0105 - A 3205



TOWER A- 6 CLUSTER LEVELS
1ST FLOOR TO 32ND FLOOR

Total SBA
3,067 SFT

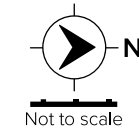
Total Carpet Area
2,027 SFT

Tower A - Unit 5

Typical Unit Plan

4 Bed + Family Lounge + Maid's Room/Home Office

West Facing: A 3405 - A 5105



TOWER A-5 CLUSTER LEVELS
34TH FLOOR TO 51ST FLOOR

Total SBA
4,953 SFT

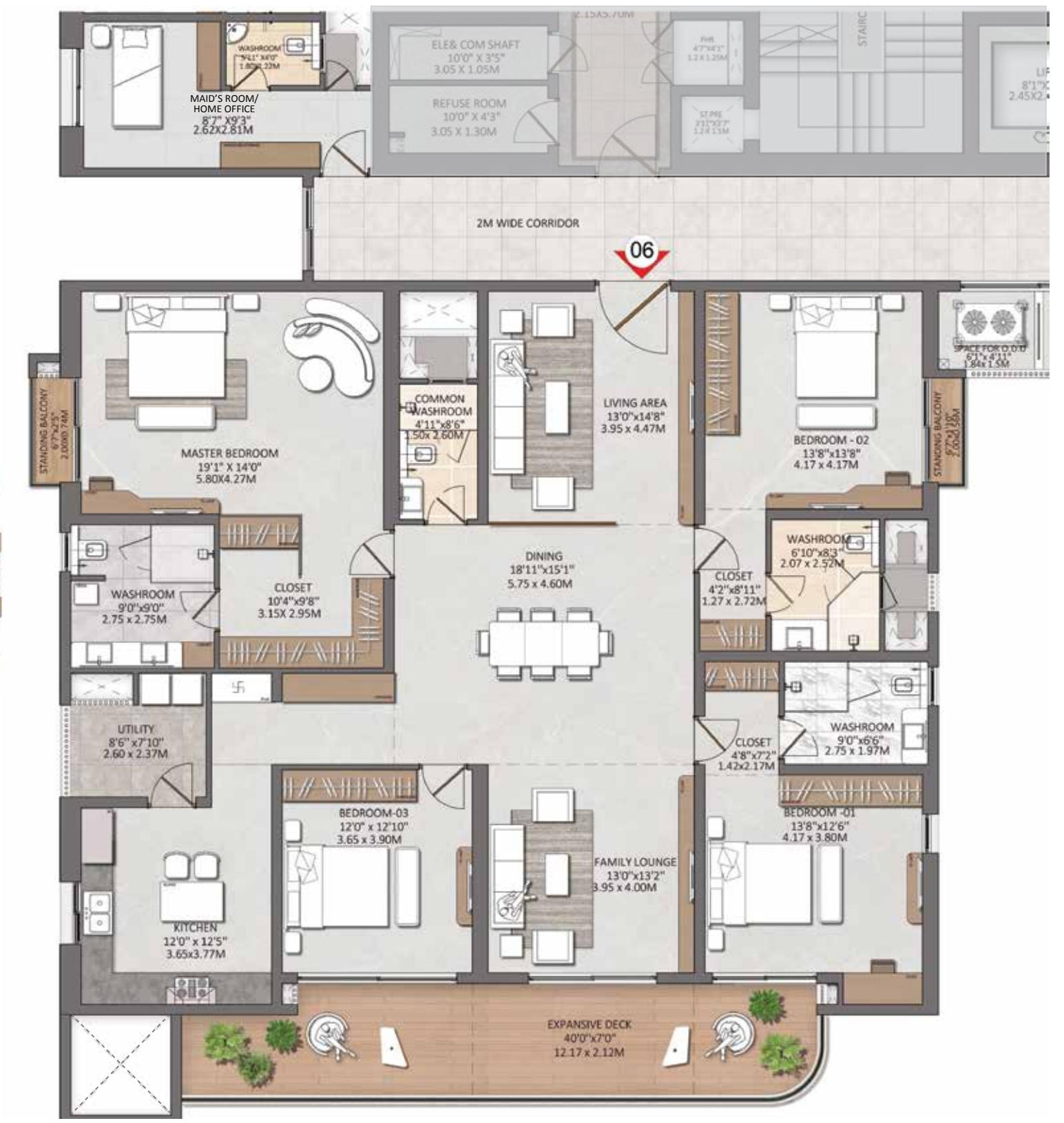
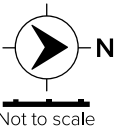
Total Carpet Area
3,215 SFT

Tower A - Unit 6

Typical Unit Plan

4 Bed + Family Lounge + Maid's Room/Home Office

West Facing: A 0106 - A 3206



TOWER A-6 CLUSTER LEVELS
1ST FLOOR TO 32ND FLOOR

Total SBA
4,123 SFT

Total Carpet Area
2,714 SFT

The information depicted herein viz. master plans, floor plans, furniture layout, fittings, illustrations, specifications, designs, dimensions, rendered views, colors, amenities and facilities, etc., are subject to change without notifications as may be required by the relevant authorities or the Developer's architect and cannot form part of an offer or contract. Whilst every care is taken in providing this information, the Developer cannot be held liable for variations. All illustrations and pictures are the artist's impression only. The information is subject to variations, additions, deletions, substitutions and modifications as may be recommended by the company's architect and/or the relevant approving authorities. The Developer is wholly exempt from any liability on account of any claim in this regard. (1 square meter = 10.764 square feet). E & OE.

The information depicted herein viz. master plans, floor plans, furniture layout, fittings, illustrations, specifications, designs, dimensions, rendered views, colors, amenities and facilities, etc., are subject to change without notifications as may be required by the relevant authorities or the Developer's architect and cannot form part of an offer or contract. Whilst every care is taken in providing this information, the Developer cannot be held liable for variations. All illustrations and pictures are the artist's impression only. The information is subject to variations, additions, deletions, substitutions and modifications as may be recommended by the company's architect and/or the relevant approving authorities. The Developer is wholly exempt from any liability on account of any claim in this regard. (1 square meter = 10.764 square feet). E & OE.

Luxury, detailed.

Super Structure

RCC Framed Structure
Aluminium Formwork / Precast Technology

Flooring

Living / Dining / Family Lounge / Foyer
Natural Marble / Engineered Marble

Master Bedroom
Natural Marble / Engineered Marble

Other Bedrooms
Natural Marble / Engineered Marble

Kitchen
Natural Marble / Engineered Marble

Balcony Deck
Wood-Finish Outdoor Vitrified Tiles

Master Bed Washroom
Large-Sized Vitrified Tiles

Other Washroom
Large-Sized Vitrified Tiles

Utility
Large-Sized Vitrified Tiles

Maid's Room & Washroom
Vitrified Tiles

Common Areas

Waiting Lounge / Reception: Marble / Vitrified Tiles
Lift Lobby: Large-Sized Vitrified Tiles

Upper Corridors, Staircases: Granite / Vitrified Tiles / Step Tiles

Wall Dado

Master Bed Washroom
Superior Vitrified Tiles up to False Ceiling

Other Washrooms
Superior Vitrified Tiles up to False Ceiling

Maid's Washroom
Superior Vitrified Tiles up to 7'

Kitchen
Provision for Modular Kitchen
with Tiles up to 2' above the Platform

Kitchen

Counter
Provision for Modular Kitchen

Plumbing and Electrical
Provision for Water Purifier, Refrigerator, Microwave,
Washing Machine and Dishwasher.

Hot & Cold Mixer with long-body Bib Cock,
Sink & provision for Instant Geyser.





Washrooms

CP Fittings

Grohe / Kohler / Duravit or equivalent

Sanitary Fixtures

Grohe / Kohler / Duravit / Roca or equivalent

Accessories

Master Bed Washroom

Imported Marble / Granite Countertop with Wash Basin
 Glass Partition with Door to Shower Area
 Overhead Rain Shower with concealed Diverter
 EWC with concealed Cistern
 Hand Shower

Other Washrooms

Imported Marble / Granite Countertop with one Wash Basin
 Glass Partition with Door to Shower Area
 Overhead Rain Shower with concealed Diverter
 EWC with concealed Cistern

Maid's Washroom

Corner Wash Basin
 Wall-Mounted EWC with exposed Cistern
 Tap & Shower provision

Hot Water Supply

Provision for Geyser in all Washrooms

False Ceiling

Calcium Silicate / Sintex /
 Water-Resistant Gypsum Boards or equivalent

Doors

Main Entry Door

Teak Wood Frame with Designer Shutter, Architrave,
 both sides Veneer with PU / Melamine Polish & Digilock

Bedroom Door

Pre-Engineered Frames / Shutters, Veneer on both sides
 finished In Melamine Polish

Washroom Door

Pre-engineered Frame(s) / Shutters, Veneer on the outside
 with Melamine Polish and Laminate on the inside

Utility

Anodized Aluminium or uPVC

Balcony

3-Track Aluminium / Full-Height Sliding Door
 with Bug Screen

Shaft Door

Hard Wood Frame with Architraves in PU finish

Railing

Balcony

Glass

Staircase – Sky Villas

Glass

Staircase – Common Areas

MS Railing

Windows & Ventilators

Windows

Aluminium Window with DGU, Bug Screen

Ventilator

As per Façade design

Painting & Finishes

Exterior Finish

External Texture Paint / Scratch Coat with Exterior Emulsion

Internal Wall

Common Area: Acrylic Emulsion Paint

Lift Lobby - Ground Level: Granite / Marble Cladding on the Lift side

Upper Level: Marble-like larger Tile Cladding on the Lift side

Staircase, Utility Area & Service Area: Oil Bound Distemper

Basement: Oil Bound Distemper

Unit Walls: Premium Acrylic Emulsion

Internal Ceiling

Common Area: Acrylic Emulsion Paint

Lift Lobby: Acrylic Emulsion Paint

Staircase, Utility Area, & Service Area: Acrylic Emulsion Paint

Basement: Oil Bound Distemper

Unit Ceiling: Acrylic Emulsion Paint

Air Conditioning

Living: VRV / VRF

Bedrooms: VRV / VRF

Electrical

3 Bed + Study / Maid

8 kW

3 Bed + Study + Maid

9 kW

4 Bed

10 kW

4 Bed + Maid

11 kW

4 Bed + Maid (Large)

12 kW

5 Bed (Duplex / Sky Villa)

14 kW

6 Bed (Duplex / Sky Villa)

16 kW

Modular Switches

Legrand, Panasonic, Vision, or equivalent

DG Back-up

100% for Common Areas and Apartments

Vertical Transportation

High-Speed Elevators

Security System & Automation

CCTV for Common Areas

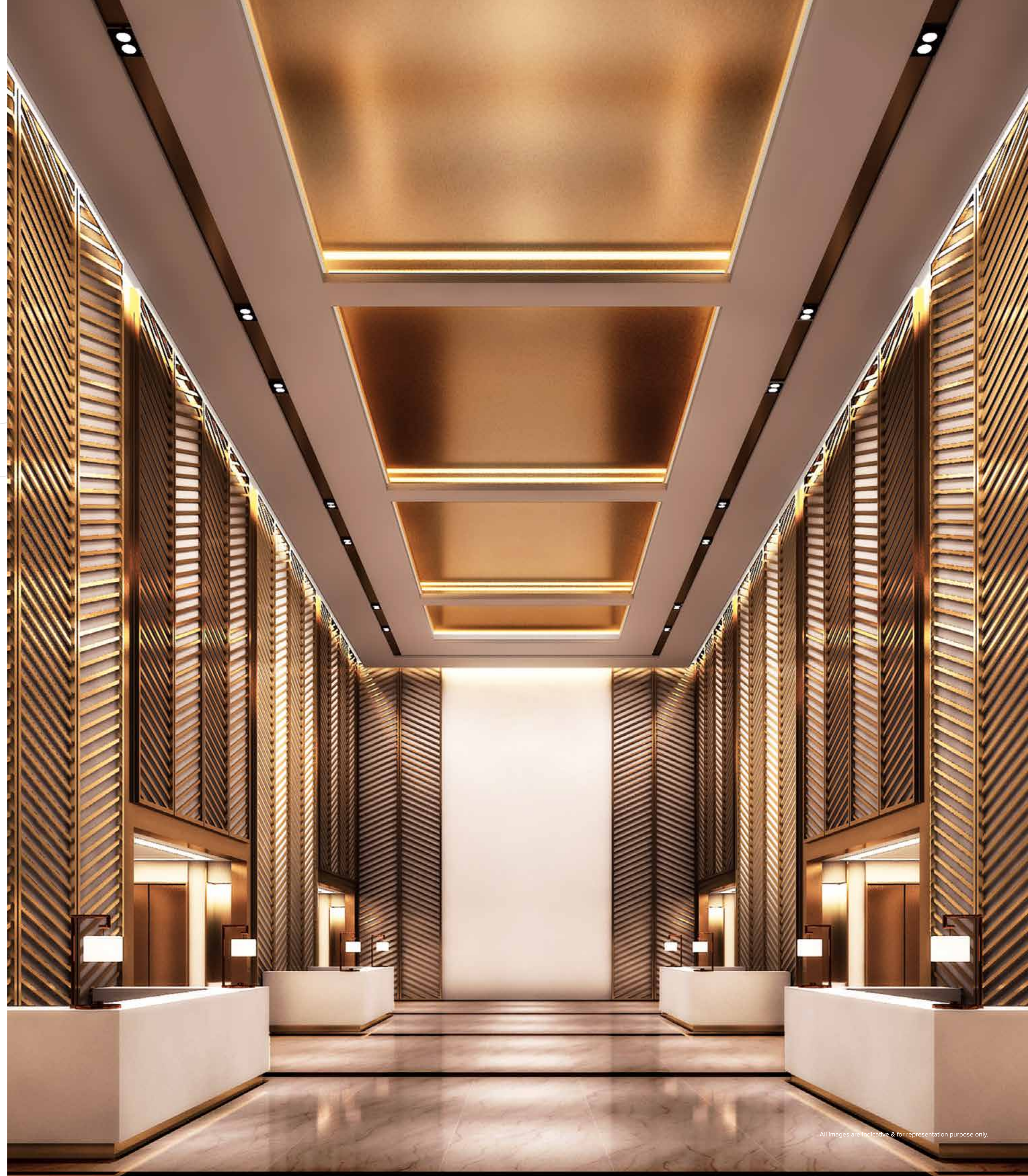
Access Control for Lobby, Lifts and Amenities Area

Gas Leak Detection System

Provision for Application-based Automation

Car Park

Common EV Charging Points provided at the B1 Parking Level



Our Milestones



1986 –
1994

Brigade Towers
Bengaluru's tallest building built by a private developer. This record was broken only in 2002.

Brigade Gardens
Bengaluru's first centrally air-conditioned shopping complex.

Brigade Residency
Mysuru's first luxury residential project.

2000

Brigade Homestead
Brigade entered the hospitality sector by pioneering the concept of serviced residences in Bengaluru.

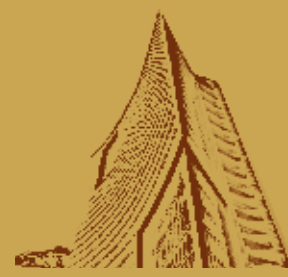


2006

Brigade Gateway, Bengaluru
(1250+ apartments)
A truly one-of-a-kind mixed-use lifestyle enclave with WTC Bengaluru, Sheraton Grand Bengaluru Hotel, Brigade School, a hospital and a club.

2010

Completion of WTC, Bengaluru
South India's tallest commercial building with 32 floors.



2013 –
2014

Foray into Hyderabad
Brigade At No. 7 launched in Banjara Hills.

PE Funding of ₹1,500 Crores by GIC Singapore
MoU signed with GIFT City, for development of 1.1 million sq.ft. of office and hotel spaces.

Opening of the High Ultra Lounge



2016

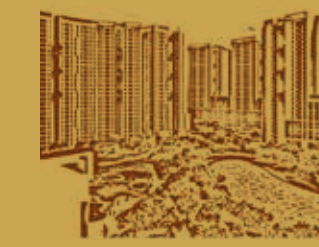
Development of Over 30 Million Sq.ft. Across 7 Cities in South India

- Launch of Grand Mercure Mysuru, a 5-star hotel in the heart of Mysuru.
- Launch of WTC Kochi.
- Launch of Brigade REAP, Asia's first Real Estate Accelerator Program.
- Completion of 30 projects in the 30th year of Brigade's operations.

2019

Towards New Horizons

- Launch of Brigade Residences at WTC Chennai.
- Launch of integrated townships - Brigade Cornerstone Utopia & Brigade El Dorado in Bengaluru.
- Launch of 'BuzzWorks' in the co-working segment with a plan for 2500+ seats across cities.



2021

Strengthens Footprint in Hyderabad
Launch of Brigade Citadel, a 1,300+ luxury home project, at Moti Nagar.

2023

Making Strides

- Achieved highest ever yearly sales.
- Signed MoU with St. John's Medical College Hospital to build a not-for-profit 100-bed hospital at Brigade El Dorado.



1995 –
1998

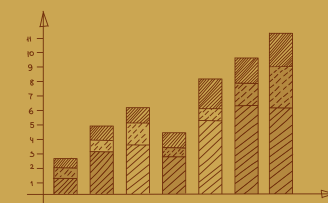
Brigade's Many Firsts
Brigade MM: Bengaluru's first multi-storeyed industrial complex.

Brigade Regency
• Bengaluru's first project to get CRISIL rating.
• One of the first developers to be ISO 9001 certified.

Brigade Software Park
Karnataka's first project by a private developer to get infrastructure status.

2002

Brigade Millennium
• Bengaluru's first mixed-use enclave.
• Awarded RT2+ by CRISIL.
• Brigade introduces the concept of a self-managed club to Bengaluru.

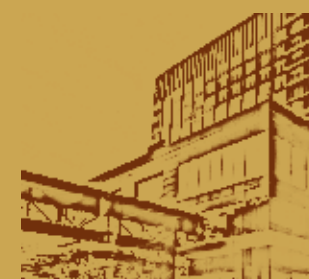


2007

Brigade Goes Public
• Brigade achieves a successful IPO.
• Ties up with hospitality majors like Starwood, Accor & Intercontinental Hotels.

2011

Building More Value
• Launch of Sheraton Grand Bengaluru Hotel at Brigade Gateway.
• Launch of Brigade Meadows, a 60+ acre integrated enclave.
• Launch of Brigade Orchards, a 135-acre township.



2015

Crossed ₹1,000 Crore Turnover Mark
• Launch of the Brigade Online Customer Portal.
• Completion of Azure at Brigade Exotica - one of the tallest residential towers in Bengaluru.

2017

Expands Footprint in Chennai

- Launch of Holiday Inn in Chennai, a 202-room hotel on OMR IT Expressway.
- Launch of Brigade's first residential project in Chennai Brigade Xanadu.



2020

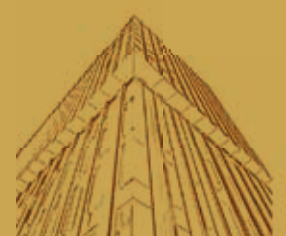
Values Lead the Way

- Completed the iconic World Trade Center in Chennai (Part of GIC platform).
- Launch of Orion Uptown Mall, Bengaluru.
- Launch of Holiday Inn, OMR Bengaluru.

2022

Completed 35 Years

- Forayed into Plotted Developments.
- Inaugurated Brigade Tech Gardens, a USGBC Platinum certified SEZ development (Part of GIC platform).
- Signed MoU with BCIC to establish Brigade-BCIC Skill Development Academy in Aerospace Park, North Bengaluru.



2024

AND BEYOND

- Expanding footprints in Chennai and Hyderabad.
- Launched Brigade Icon on Mount Road, Chennai.
- Recognised as 'Great Place to Work' for the 14th year in a row.

Multiple Domains.

Single-minded commitment.

Brigade Group is one of India's leading property developers with nearly four decades of expertise in building positive experiences for all stakeholders. Instituted in 1986, the company has developed many landmark buildings and transformed the skyline of cities across South India, namely – Bengaluru, Mysuru, Mangaluru, Chikmagalur, Hyderabad, Chennai, Kochi, and GIFT City, Gandhinagar with developments across the Residential, Commercial, Retail, Hospitality and Education sectors. Since its inception, Brigade has completed 280+ buildings amounting to over 90 million Sq.ft. (8.3 million sq.mt.) of developed space across a diverse real estate portfolio.

Brigade assures best-in-class design and top-of-the-line facilities that exude elegance and sophistication. The residential developments include villas, villaments, penthouses, premium residences, luxury apartments, value homes, urban studios, independent living for seniors and mixed-use lifestyle enclaves, plotted developments and townships. Over the years, the projects have been one-of-a-kind in the sector, for example, Brigade developed Brigade Gateway, Bengaluru's first lifestyle enclave and Brigade Exotica, one of the tallest residential buildings in Bengaluru.

Brigade is among the few developers that also enjoys a reputation for developing Grade A Commercial properties. The license owners of the World Trade Center across South India, the Group's commercial spaces have top international clients operating out of them. Brigade also entered the co-working space with 'BuzzWorks' in 2019. The commercial segment has seen consistent growth over the last few years with over 5 million sq.ft. of office spaces under development.

Brigade's first venture into large format retail was the iconic, world-class Orion Mall at Brigade Gateway, subsequently expanding with Orion Avenue and Orion Uptown. Brigade's Hospitality offerings include star hotels, recreational clubs, convention centres and The Baking Company, a unique patisserie.

Brigade is the founder of The Indian Music Experience (IME) – a monumental and philanthropic initiative that is India's only hi-tech interactive music museum. It was conceived to give back to society and sensitise the present generation to the rich culture of Indian music. The Group contributes in numerous ways towards community development, health, education, and the environment. Through the Brigade Foundation, the brand has successfully opened three schools in its name, offering holistic education; has conducted large-scale tree plantation drives; spruced up parts of the city; revived public recreational spots like lakes and parks, to name a few.

Brigade Real Estate Accelerator Program (REAP), Asia's first startup accelerator program, is a prelude to the changing trends in the real estate industry, which is standing on the cusp of disruption. REAP brings along innovators and inventors to use technology as a catalyst for creating sustainable and scalable businesses in the real estate industry.

'Great Place to Work Institute' has rated the Brigade Group as one of India's best companies to work for in the real estate industry. This responsible attitude and innovative mindset combined with the uncompromising quality of the projects over the years has created a brand of outstanding repute.

For more information, please visit www.brigadegroup.com

APARTMENTS
VILLAS
INTEGRATED ENCLAVES
SENIOR LIVING



OFFICES
RETAIL SPACES

CLUBS
HOTELS
CONVENTION CENTERS
SCHOOLS



All images are indicative & for representation purpose only.

Awards & Accolades.

Brigade Group

Recognised for being amongst India's Best Workplaces in the Real Estate industry for 14 years in a row, at the 'Great Place To Work' 2024.

Recognised as one of 'India's Top Builders National Category' at the Construction World Architect and Builder Awards (CWAB) 2022.

ESG India Leadership Awards 2021 for Leadership in Green Product and Service, presented by Acuite and ESG Risk Investments and Mergers.

Brigade Tech Gardens, Bengaluru

Brigade Group won an award in the category of Commercial High-Rise Development for Brigade Tech Gardens at The Asia Pacific Property Awards 2023-24.

Brigade El Dorado, Bengaluru

Received the prestigious 'Pradhan Mantri Awas Yojana' award at the PMAY - Empowering India Awards 2022.

Brigade Orchards, Bengaluru

Won the 'Residential Project - Township' award at The Economic Times Real Estate Awards 2022 - South.

Brigade Palmgrove, Mysuru

Won the 'Premium Villa Project of the Year' award at the NDTV Property Awards.

Brigade World Trade Center, Chennai

WTC Chennai won the award for Environmental, Social & Governance (ESG). WTC was also declared the winner in the Safety & Security category.

Brigade Citadel, Hyderabad

CII-SR EHS Excellence Awards 2021
Brigade Citadel received the Gold Award for Excellence in EHS practices.



**NET ZERO
EMISSION
BY 2045**

Deepening our
**Sustainability
commitment.**

At Brigade Group, our core philosophy centers around shaping a radiant future with responsibility and care. Every project we embark on, is infused with deep reverence for our invaluable natural resources, and each initiative resonates outward to foster positive societal transformation. We don't merely design buildings; we architect a thriving tomorrow.

Brigade's journey towards a 'Net Zero Carbon footprint by 2045' began with a comprehensive assessment of our carbon emissions. We are implementing extensive de-carbonisation strategies, such as reducing energy consumption and transitioning to clean energy, which not only mitigates climate change but also creates numerous opportunities for sustainable growth.

We are committed to preserving and enhancing bio-diversity through green building designs, urban greening projects, and conservation efforts that protect the local ecosystem.

To know more about our sustainability milestones and goals, visit [BrigadeGroup.com](https://www.brigadegroup.com)



Our Core Values

Founders



To UPGRADE TO BRIGADE, reach us at 1800 102 9977 • BrigadeGroup.com

Marketing Office

Brigade Gateway, Plot No. 8,
Survey Nos. 239 & 240,
Neopolis Layout, Kokapet Village,
Hyderabad

Registered & Corporate Office

29th & 30th Floor, WTC Bengaluru,
Brigade Gateway Campus, Dr. Rajkumar Road,
Malleswaram-Rajajinagar,
Bengaluru

Dubai Office

902, Nassima Tower,
Sheikh Zayed Road
Ph: +971 4355 5504
dubaisales@brigadegroup.com

Singapore Office

Suite: 612, Level 6,
Republic Plaza,
Raffles Place
salesenquiry@brigadegroup.com

Offices also at: CHENNAI • MYSURU





BRIGADE

Building Positive Experiences