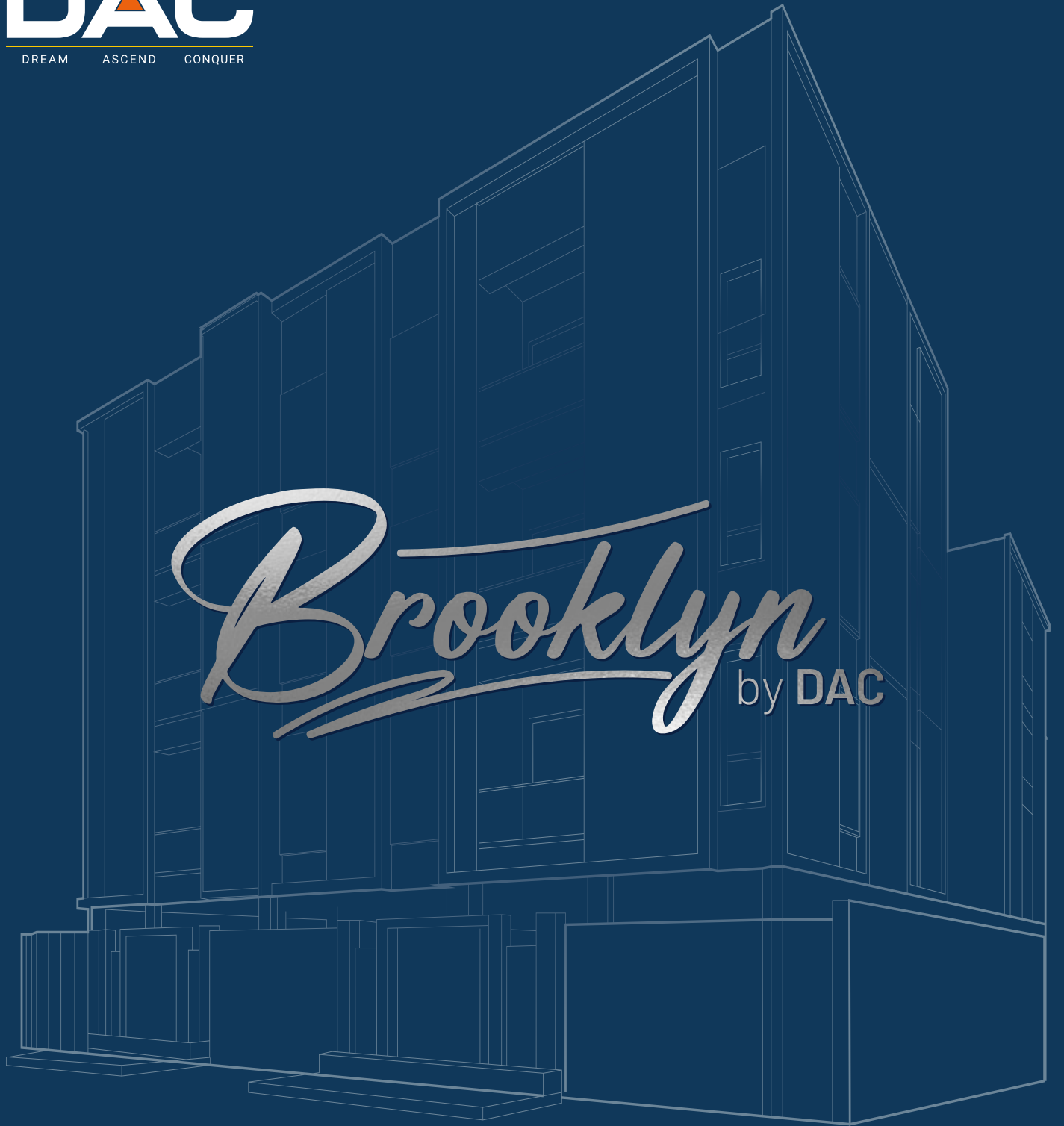


DACTM

DREAM ASCEND CONQUER



Brooklyn by DAC

The Signature of

Sophisticated Living in the Heart of R.S.Puram

From MD's Desk



Mr. S. SATHISH KUMAR
- Managing Director

The DAC Way

Driven by Purpose. Defined by Precision.

At DAC Developers, we don't just build structures — we craft homes where families create memories, dreams take shape, and happiness finds a home. Backed by over a decade of trust, every DAC project is a balance of functionality and emotion, comfort and aesthetics.

Each home is the result of a clear process, built around three core principles — each one carefully thought through, long before the first brick is laid.

Right Location

It starts with asking: would we want to live here?

Before a single blueprint is drawn, we walk the land. We study the surroundings, the community, the future potential. Is it connected, yet calm? Are schools, hospitals, workplaces, and essentials within reach? Does it feel like home — not just today, but ten years from now?

At DAC, choosing a location is never about what's trending. It's about what sustains — peace of mind, daily ease, and long-term value. That's the lens we use. And we don't compromise on it.

Right Design

Every line on the layout answers a real-life need.

We imagine how a family might move through the space — where light should pour in, where kids might play, how a kitchen becomes the heart of a home. Design isn't just about aesthetics for us.

It's about solving quietly — for comfort, for efficiency, for joy. Storage where you need it. Balconies that breathe. Plans that evolve with time.

We design like we're going to live there ourselves — because homes should grow with you, not limit you.

Right Process

What you don't see is what makes all the difference.

Long before the first stone is laid, we've done the groundwork — approvals, soil studies, partner vetting, and plan reviews. Every step is thought through, refined, and backed by systems.

Our time lines aren't just optimistic targets — they're structured commitments.

We obsess over the behind-the-scenes — quality checks, material sourcing, vendor coordination — because that's what ensures peace of mind at handover.

This is what we mean by building with integrity: not just what's visible, but everything that holds it up.

We take pride in how we build — not just the homes themselves, but the entire journey. From design to delivery, customization to celebration, our process is built to make every step seamless and personal.

Because at DAC, we believe:

“When you build a happy home, you make the world a little happier.”

Welcome to a world where homes are made with heart.

Welcome to DAC.

More Than A Home - A Statement of Who You Are



Welcome to Brooklyn, a boutique address in the prestigious R.S. Puram. With just 15 residences, it isn't simply a home - it's an expression of refined taste, personal space, and understated elegance.

Whether you're investing in your forever home or starting a new chapter, Brooklyn brings together the comfort of community with the charm of exclusivity.

4.16 Grounds | S+3 Floors | 15 Apartments
3 BHK | 1411 SQFT - 1629 SQFT

In the Heart of It All

R.S. Puram – Heritage, Access, Culture.



Nestled in Coimbatore's most sought-after neighbourhood, Brooklyn puts you minutes away from iconic schools, vibrant shopping streets, gourmet cafes, lush parks, and premier healthcare. Here, everyday life meets effortless convenience.



Educational Institutes

Shri Nehru Vidyalaya Matriculation Higher Secondary School - 550 m

Kikani Vidhya Mandir – 200 m

Bharatiya Vidya Bhavan Matriculation Higher Secondary School - 800 m

GCT Government College of Technology - 1.5 km

St. Francis Anglo Indian Girls High School – 3.6 km

Sri Ramakrishna College of Arts and Science – 3.8 km

Kongunad Arts and Science College - 7.0 km

PSG College of Technology - 7.5 km

PSG College of Arts and Science - 8.0 km

PSGR Krishnammal College for Women - 8.2 km



Hospitals

The Eye Foundation Hospital - 500 m

Dr Agarwals Eye Hospital – 800 m

Vedanayagam Hospital - 1.0 km

Rex Ortho Hospital - 1.0 km

Kongunad Hospital - 1.3 km

Ganga Hospital – 1.5 km

Dr.Sengaliappan Nursing Hospital - 2.5 km

KG Hospital - 2.8 km

GKNM Hospital - 5 km

KMCH hospital – 12 km



Connectivity

Coimbatore Gandhipuram Bus Stand - 2.2 km

Coimbatore Railway Station - 2.5 km

Coimbatore International Airport - 12.0 km



Entertainment

Brookefields Mall - 500 m

Prozone Mall - 9.0 km

Fun Republic Mall - 8.0 km

Design That Speaks of Quiet Sophistication

A bold, modern façade. Clean lines. Warm textures. Brooklyn's architecture reflects the evolving spirit of R.S. Puram while embracing timeless elegance. With carefully designed balconies, expansive glazing, and a balance of privacy and openness, every home is tailored for light, air, and luxury.



Spaces That Enrich Your Everyday

Life at Brooklyn extends beyond your four walls.
Discover a curated selection of rooftop and ground-level amenities that bring wellness, leisure, and connection together.



ROOF TOP PERGOLA SEATING



DAC

Brooklyn



LUXURY AMENITIES



FULLY EQUIPPED GYM



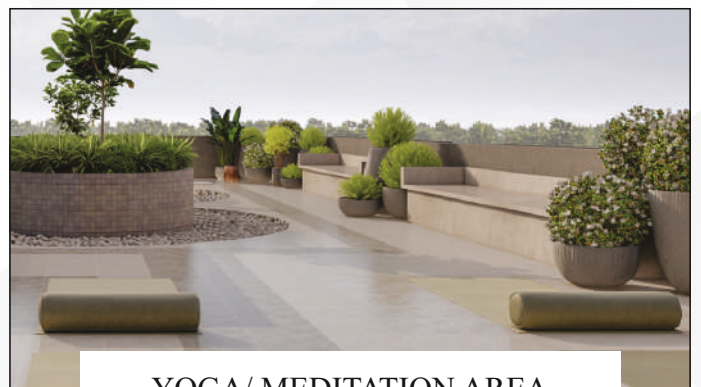
CHILDREN'S PLAY AREA



ROOF TOP PARTY AREA

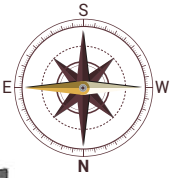


REFLEXOLOGY PATHWAY



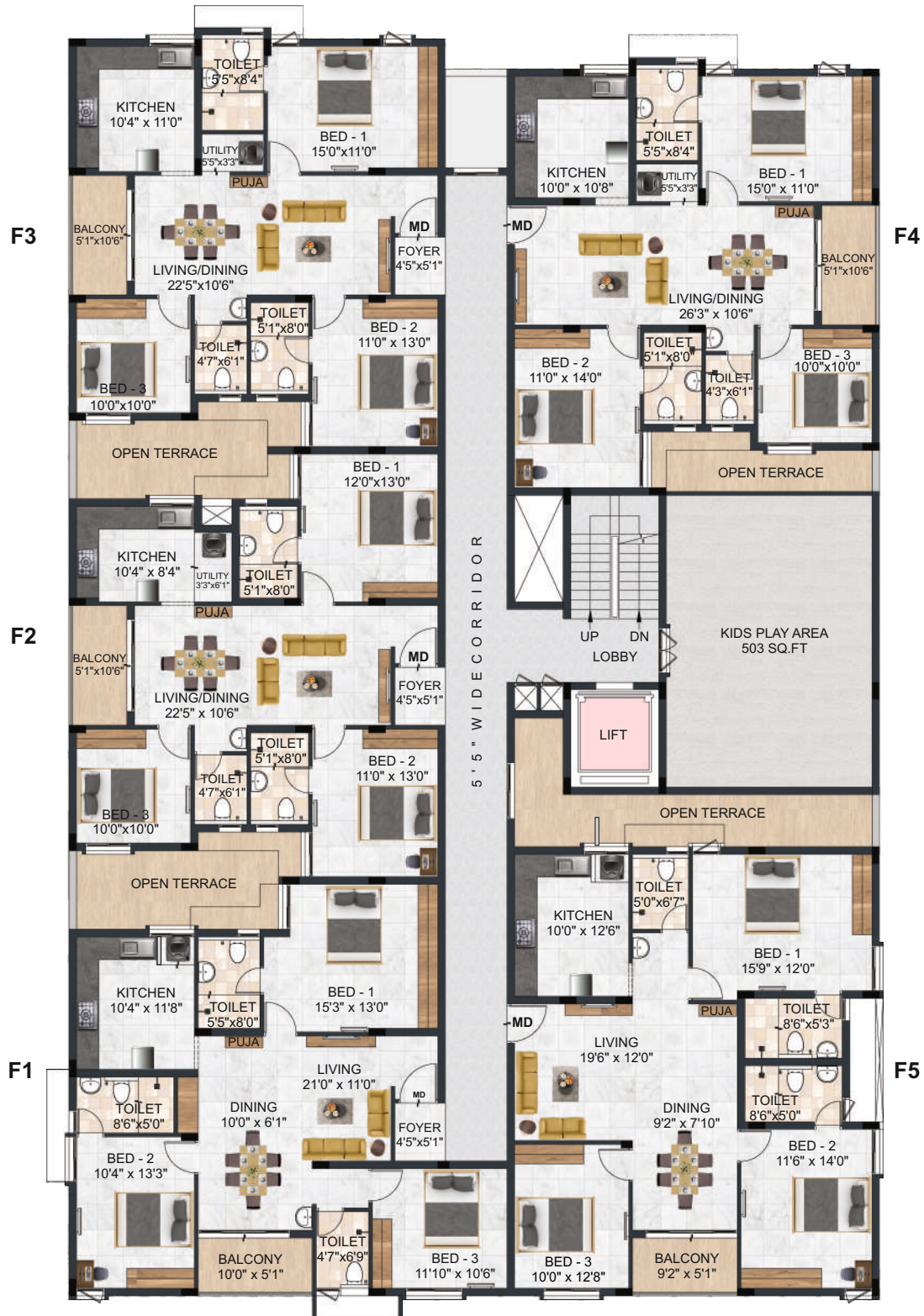
YOGA/ MEDITATION AREA

SITE CUM STILT FLOOR PLAN



7.2 M WIDE ROAD

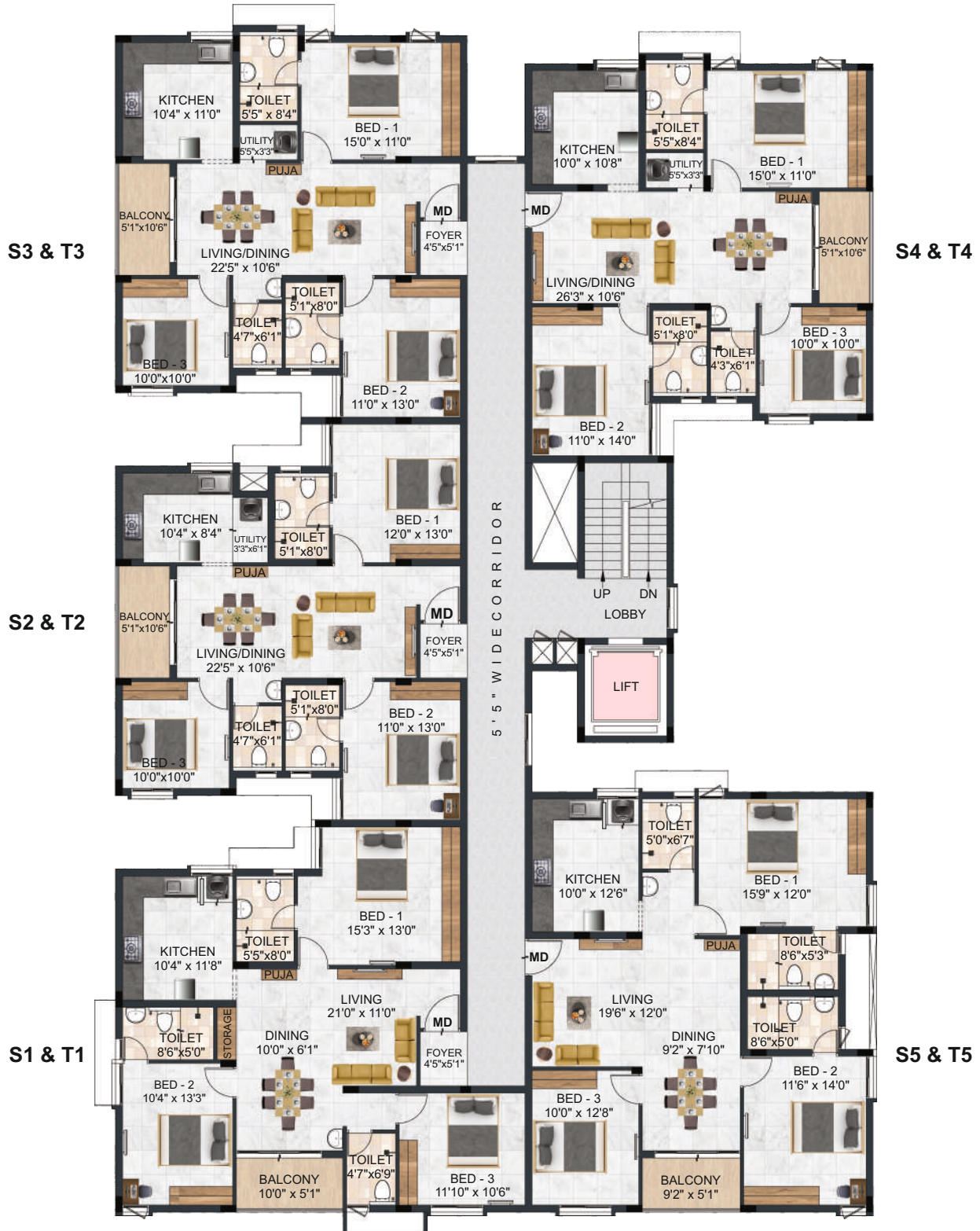
FIRST FLOOR PLAN



F1	3BHK + 3T	1546 SQ.FT.	NORTH
F2	3BHK + 3T	1411 SQ.FT.	NORTH
F3	3BHK + 3T	1465 SQ.FT.	NORTH

F4	3BHK + 3T	1474 SQ.FT.	EAST
F5	3BHK + 3T	1629 SQ.FT.	EAST

TYPICAL FLOOR PLAN (2ND & 3RD)



S1 & T1	3BHK + 3T	1546 SQ.FT.	NORTH
S2 & T2	3BHK + 3T	1411 SQ.FT.	NORTH
S3 & T3	3BHK + 3T	1465 SQ.FT.	NORTH

S4 & T4	3BHK + 3T	1474 SQ.FT.	EAST
S5 & T5	3BHK + 3T	1629 SQ.FT.	EAST

The Foundation of Elegance Is in the Details

At Brooklyn, every detail is curated to reflect a life of quiet sophistication - not just in form, but in function. From the materials chosen to the finishes applied, our specifications reflect a seamless blend of durability, design, and distinction.

These are the finer touches that elevate your home from a space you live in to one you truly cherish.

1. STRUCTURE

RCC Framed Structure and AAC blocks used for

External/Internal walls

Anti-Termite Treatments wherever applicable during

Construction Stage.

2. TILING

2.1 FLOORING

All tiles will be from RAK/KAJARIA or equivalent make.

Living, dining and bedrooms – 600MM x 600MM vitrified tiles with spacers.

Master Bedroom – 200MM X 1200MM wooden pattern vitrified tiles with spacers.

Toilets, balconies & utility area - Antiskid ceramic tiles with spacers.

Terrace – Weather proof tiles.

Door threshold in flats will be finished with granite.

Staircase – finished with Granite flooring

Stilt floor lobby with Granite flooring and Corridors & typical floor lobby – vitrified tiles.

Car Parking – Grano flooring

2.2 DADO

All tiles will be from RAK/KAJARIA or equivalent make.

Toilet – 600MM x 300MM ceramic wall tiles up to 2700MM height from the floor level.

Utility areas – 600MM x 300MM ceramic tiles, height to match the kitchen wall tile level.

All windows sill level to be finished with granite.

3. KITCHEN

600MM x 600MM Vitrified tile flooring from RAK/KAJARIA or equivalent make.

Open kitchen (Counter top, wall dado, sink & sink faucets – not part of standard specifications.)

Provision for water purifier & Sink water point will be provided.

4. DOORS / WINDOWS / VENTILATORS

MAIN DOOR (1050MM x 2400MM) 2400MM HEIGHT, frame is made of good quality Engineered wood.

Shutter of 44mm thick both Sides finished with engineered Veneer and hardware's of YALE/DORSET or equivalent make.

Digital lock will be provided.

BEDROOM DOOR (900MM x 2400MM) 2400MM HEIGHT, frame is made of good quality Engineered wood.

Shutter of 36mm thick both Sides finished with engineered Veneer and designer hardware's of YALE/DORSET or equivalent make.

TOILET DOOR (750MM x 2400MM) 2400MM HEIGHT, frame is made of good quality Engineered wood. Shutter of 36mm thick both Sides finished with engineered Veneer and designer hardware's of YALE/DORSET or equivalent make.

UPVC French doors with sliding shutter will be from SAINT-GOBAIN/FENESTA or Equivalent make.

UPVC Windows with sliding shutters for all windows will be from SAINT-GOBAIN/FENESTA or Equivalent make.

Grills will be provided.

UPVC Ventilators with pin headed glass along with Exhaust fan provision will be from 3 SAINT-GOBAIN/FENESTA or Equivalent make.

5. PAINTING FINISHES

All internal walls will be finished with 2 coats of smooth putty, 1 coat of primer and 2 coats of Premium emulsion paint of ASIAN/BERGER or Equivalent make.

All external walls will be finished with Texture, 1 coat of primer and 2 coats of weather proof emulsion paint of ASIAN/BERGER or Equivalent make.

Ceilings will be finished with 2 coats of smooth putty, 1 coat of primer and 2 coats of Tractor Emulsion ASIAN/BERGER or Equivalent make.

Glass Railing for Balcony and SS Railing for Staircase aesthetically designed & fixed to wall.

6. ELECTRICAL FIXTURES/FITTINGS

Three-phase power supply with concealed wiring will be provided.

All switches will be of HAVELLS/SCHNEIDER or equivalent make.

Cables & wiring will be of HAVELLS/ANCHOR/POLY CAB or equivalent make.

Split A/C provision with electrification will be provided in Living room cum Dining and in all bedrooms.

15A plug points will be provided for Refrigerator, Washing machine and Micro-oven.

15A plug points will be provided for Geyser in all toilets.

5A socket for chimney, hob will be provided in kitchen, electrification for exhaust fan point in all toilets.

Power back up of 1000W for 3BHK apartments & the essential points in common areas.

TV points will be provided in Living and in all bedrooms and Telephone/Internet point in Living & Master bedroom.

USB charging port in switch boards will be provided in Living and in all bedrooms.

Video door phone will be provided for each flat.

Solar power for the essential points in common areas.

7. PLUMBING & SANITARY

All sanitaryware in ceramic of superior brands like KOHLER/GROHE or equivalent will be provided.

EWC (Wall mounted closet) with health faucet of superior brand like KOHLER/GROHE or equivalent will be provided.

High quality concealed flush cistern of GEBERIT or equivalent make for WCs.

Washbasin of superior brand like KOHLER/GROHE or equivalent will be provided in toilets.

CP fittings of superior brand like KOHLER/GROHE or equivalent will be provided.

Single lever HI – FLOW concealed diverter of KOHLER/GROHE or equivalent makes of hot & cold mixer with overhead shower will be provided in the toilets.

CPVC/UPVC pipelines/ PVC Soil waste lines/ sewage pipelines and Rainwater lines of a quality ISI brands like ASTRAL/SUPREME/PRINCE or Equivalent will be provided.

8. COMMON POINTS

Site perimeter fenced by Compound wall, Entry/Exit gates will be provided.

Security booth will be provided at the Entry gate.

CCTV surveillance at pivotal points across the site extent which makes it a secure gated community.

Elevators of 13 Passengers of JOHNSON /OTIS or equivalent make.

Adequate number of bore wells will be provided.

Common sump and Rain Water Harvesting will be provided.

EV charging provision with electrification will be provided on the stilt floor for one designated parking space per customer.

However, charging equipment and devices are not included in the standard specifications.



You're Warmly Invited to Experience Brooklyn

There's something special about Brooklyn — but it's best felt in person.

We invite you to walk through our thoughtfully crafted spaces, feel the quiet elegance of the design, and take in the charm of R.S. Puram that surrounds you.

Stand in the heart of your future living room, step out onto a breezy balcony, and imagine what life could be like here — calm, connected, and truly yours.

Come experience Brooklyn.
Your new chapter begins with a visit.

DAC DEVELOPERS PVT. LTD.

COIMBATORE

No.129/57, 3rd Street,
Bharathi Colony, Peelamedu,
Coimbatore - 641 004

☎ 042 2493 8373

✉ cbe@dacdevelopers.com

🌐 www.dacdevelopers.com

CORPORATE OFFICE

New No.27, Old No. 19, K-Block,
A1, First Main Road, Anna nagar East,
Chennai - 600 102

BRANCHES

DUBAI | SINGAPORE

Call: +91 92 8005 8005

TN/11/Building/0220/2025 dated 25.06.2025|www.rera.tn.gov.in|*T&C Apply

Scan QR for
Site Location

