

JAK

रसः



PREMIUM 1, 2, 3 & 4 BHK (JODI) RESIDENCES



नामः

A LIFESTYLE OF
ELEGANCE AND
PEACE

“NAMAHA IS MORE THAN JUST A RESIDENCE; IT IS A STATEMENT OF PEACE AND SOPHISTICATION.”

It is a state of being where you relinquish your worldly attachments, finding solace and peace within. At **JAK NAMAHA**, we invite you to experience this profound sense of tranquility in your own home.

PEACEFUL LIVING

Experience the serenity of a home that respects your desire for tranquility.

ELEGANT DESIGN

Bow to the beauty of contemporary architecture combined with timeless charm.

GREEN LIVING

A sustainable lifestyle awaits you with ample daylight & cross ventilation all day long with apartments that abide by green living practices.



BEHOLD TO EXPERIENCE THE BEST OF TRANQUILITY & COMFORT

At **JAK NAMAHA**, we invite you to experience a profound sense of tranquility in your own home.

The 26-storeyed tower is designed with mivan-tech construction and an eye for detail, offering spacious living areas that reflect the true essence of luxury.

Our carefully crafted 1, 2, 3 & 4 BHK (Jodi) residences are designed to be more than just living spaces, they are sanctuaries where you can truly unwind and connect with your inner self with a dedicated 4000 sq. ft. of recreational space.

Prepare to embark on unparalleled luxury, comfort, and serenity.



Kid's Play Area

Image For Representation Purpose Only



Fitness Centre



Community Lounge



Senior Citizens Area

Image For Representation Purpose Only



Image For Representation Purpose Only

INTERNAL AMENITIES

- Aesthetically Designed False Ceilings
- Sufficient Electric Points
- Modern LED Light Fittings And Fans
- Jaguar Bathroom Fittings & Branded Sanitary
- Ultra-Modern Full Modular Kitchen With Chimney
- Double Vitrified Glossy Tiles Of 4*2 Or 6*4

-  24/7 CCTV Surveillance
-  Double Height Entrance Lobby
-  High Speed Branded Lifts
-  Electric Car And Scooter Charging Facility
-  Fully Furnished Modular Kitchen
-  Green Energy Efficient Building With Solar Electricity
-  Digital Visitor Management System

1 BHK



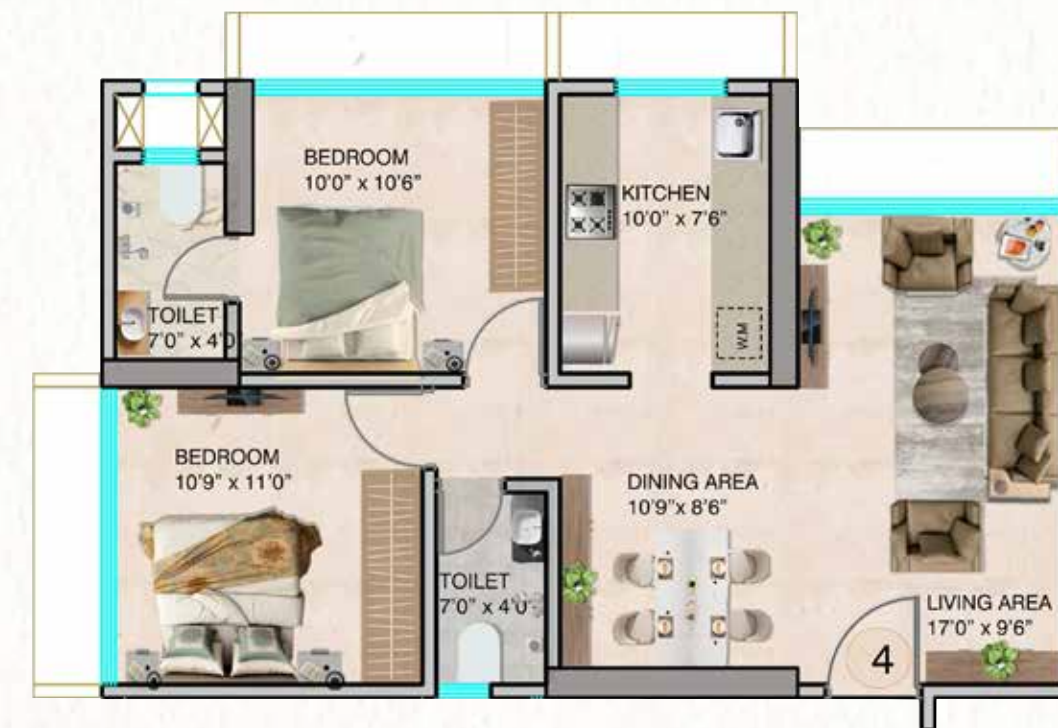
2 BHK



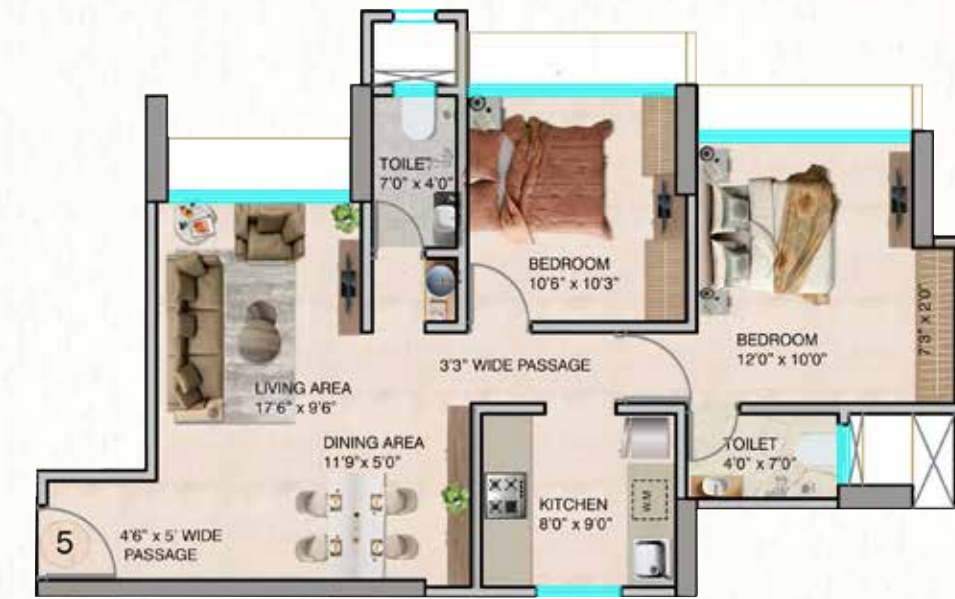
1 BHK



2 BHK

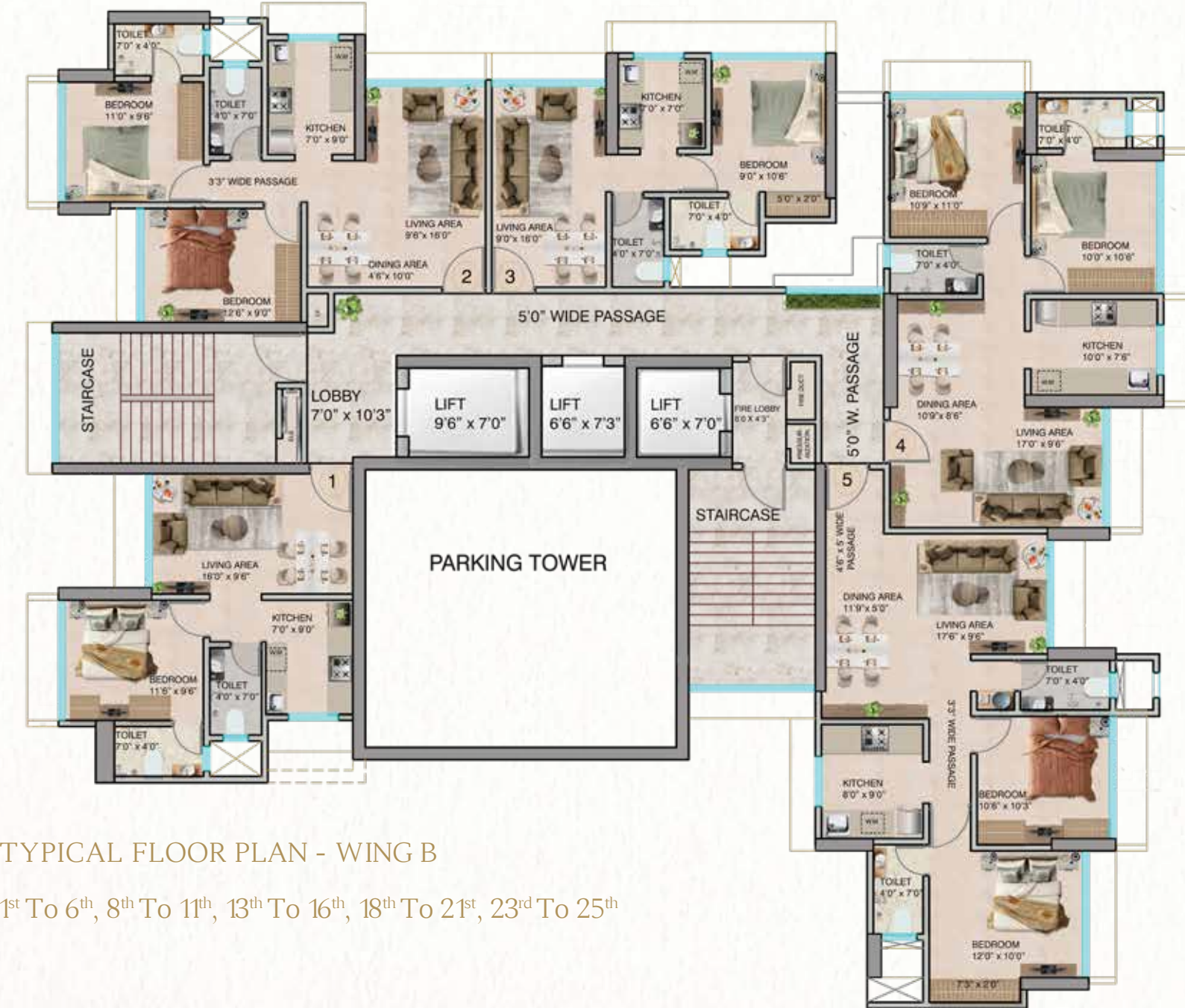


2 BHK



4000 SQ. FR. RECREATIONAL FLOOR AT 280 FT. HEIGHT

- 1 Reading Corner
- 2 Children's Play Area
- 3 Yoga Zone
- 4 Fitness Center
- 5 Pool Table
- 6 Table Tennis
- 7 Chess Zone
- 8 Carrom Zone
- 9 Work Lounge
- 10 Banquet / Community Area
- 11 Mini-Banquet / Community Area



TYPICAL FLOOR PLAN - WING B
 1st To 6th, 8th To 11th, 13th To 16th, 18th To 21st, 23rd To 25th



ABOUT DEVELOPER

Jak Infratech has emerged as a prominent real estate developer in Mumbai and its surrounding areas with a track record of delivering projects on/before time. Led by a seasoned team with a proven track record in the industry, the company has rapidly ascended to a leading position through unwavering commitment and expertise. As a forward-thinking organization, Jak Group stays at the forefront of technological advancements to deliver exceptional real estate solutions.

OUR ETHOS

Building Dreams, Delivering excellence



VALUE ENGINEERING

We ensure exceptional quality and functionality in home construction without sacrificing affordability.



POSITIVE HOMES

Transforming houses into homes, our properties infuses positivity and emotional connection, evoking warmth and joy.



DIVINE ARCHITECTURE

Experience plug-and-play simplicity, ensuring a hassle-free, stress-free transfer to your new home.



SEAMLESS TRANSACTION

We prioritize seamless transactions, fostering trust through transparent communication and dedicated support.

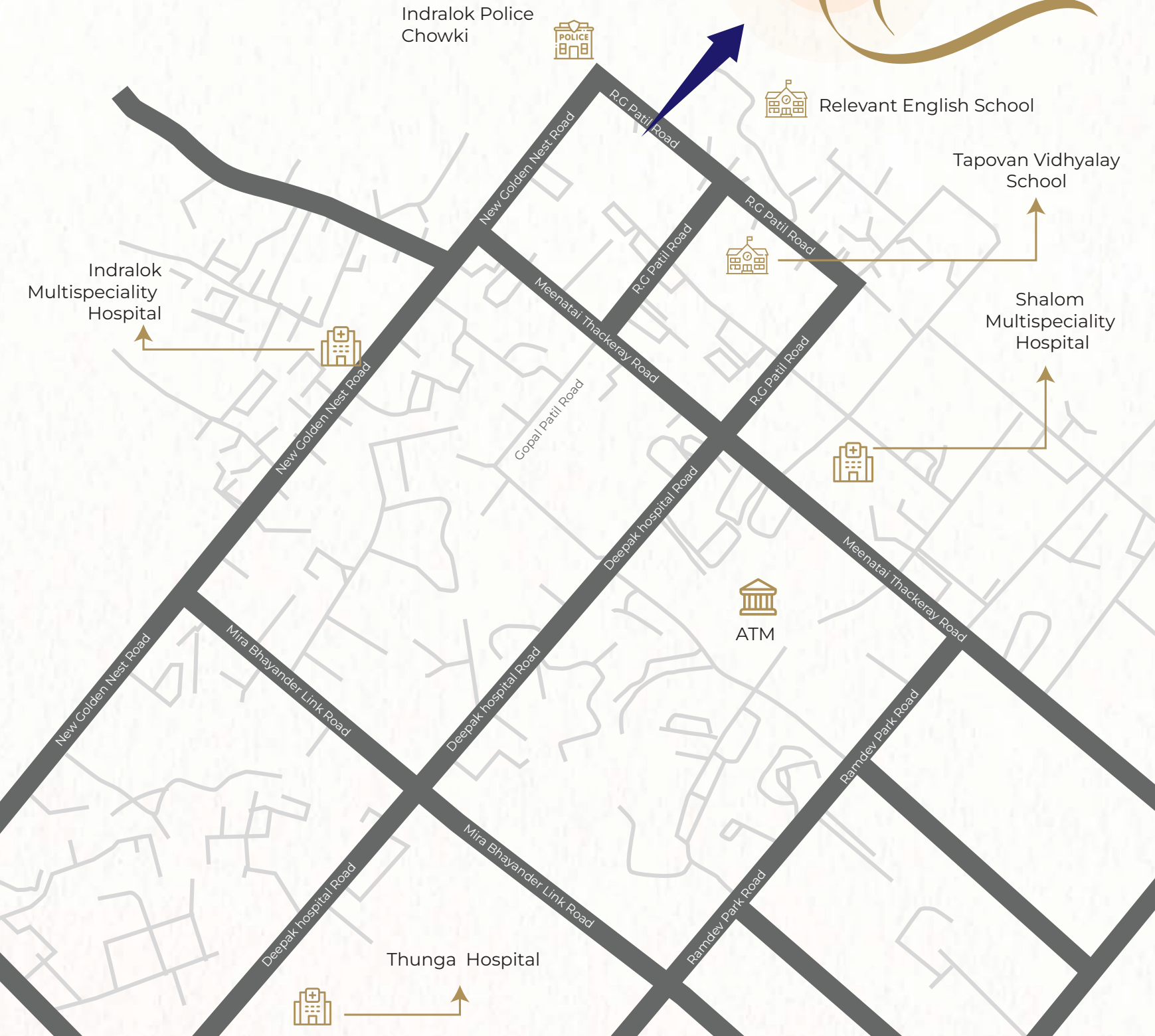
12 YEARS
Of Experience

7+ PROJECTS
Delivered

3 LACS+
Sq. ft. Developed

360+
Happy Families

Golden Nest Circle





+91 8369174034

www.jakgroup.co.in contact@jakgroup.co.in

Site Address: JAK NAMAHA Indralok ph - IV, Behind Maneebhadra Tower, Tapovan School Road ,Bhayander East, Thane - 401105

Corporate Office: Jak Infratech, A/12/5, Vishnu Smruti CHS, Bhadran Nagar Road No. 1, S. V. Road, Near NL College, Malad West, Mumbai 400064



Planning Architect - Mario E Correa

Legal - S.P Singh

RCC consultant - D.N Patel & Associates

Interior & Landscaping Architect - Deven Gohil

MahaRERA No:
XXXXXXXXXXXX

Disclaimer: All plans, drawings, amenities, features, specifications, other information, etc. mentioned indicate the kind of development that is proposed and are subject to the approval of the respective authorities. All renderings, floor plans, pictures, perspective views of buildings, and model-furnished apartments and maps are the artist's conceptions, not actual buildings, walls, roadways, or landscaping. Information given in this advertisement is not final or legally binding and is liable to change. Final discretion remains with the Developers.