



Poonam  
Builders

72

WEST

LOKHANDWALA  
ANDHERI (W)

*Luxurious Sundeck*

**2, 3 & 4 BHK**

*Jodi option also available*

**Spacious Homes**

# E-DECK & CLUBHOUSE PLAN

# Club House Level Amenities



1200 sq. ft.  
Entrance Lobby

800 sq. ft.  
Mini Theatre

260 sq. ft.  
Meeting Room

860 sq. ft.  
Games Room

2000 sq. ft.  
Gymnasium

1000 sq. ft.  
Changing Room

840 sq. ft.  
Banquet Hall

# MASTER LAYOUT



- 1. Entrance Path
- 2. Green Corners
- 3. Reflexology Path
- 4. Fauna sculptures
- 5. Plantations

- 6. Calming corners
- 7. Mist pond
- 8. Kids play area
- 9. Interactive Play wall
- 10. Access to gym and changing room

- 11. Pool Deck
- 12. Pool loungers
- 13. Kids pool
- 14. Shallow pool with stepping path
- 15. Floating deck

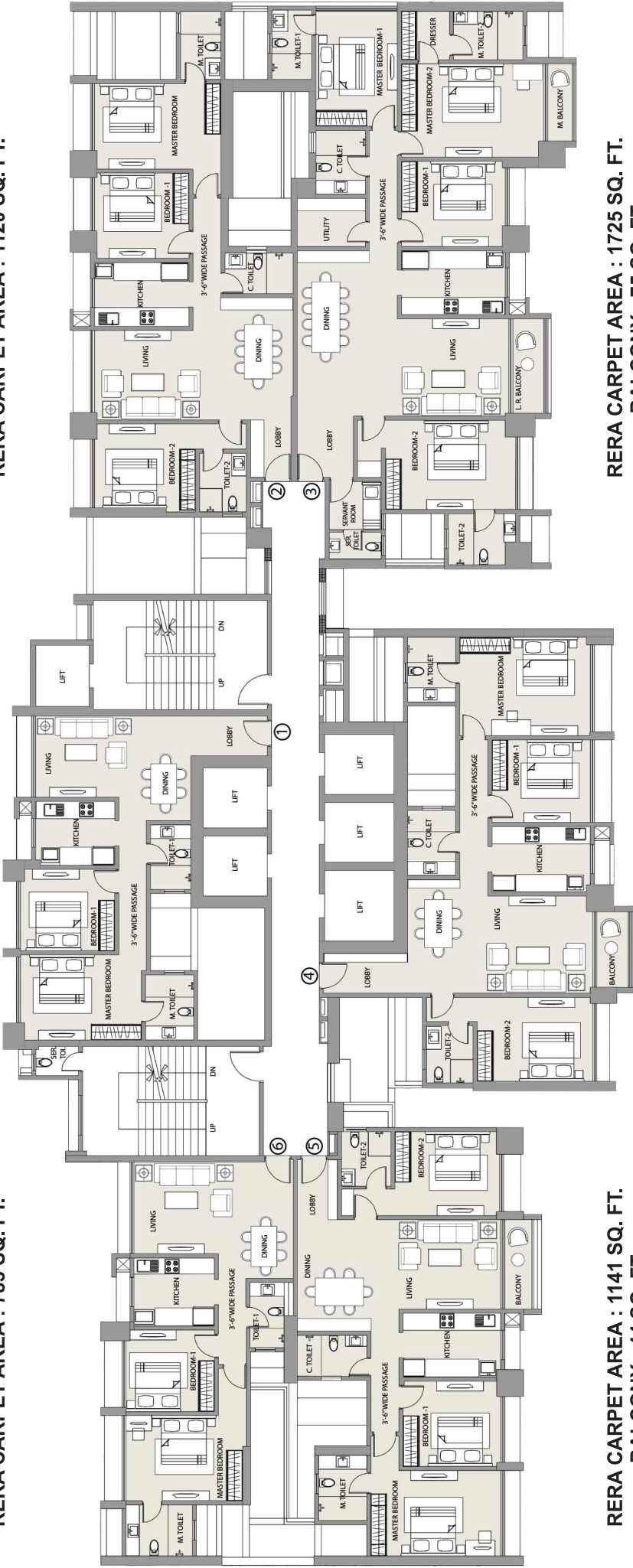
- 16. Swimming pool
- 17. Jacuzzi
- 18. Steps up to deck
- 19. Party lawn
- 20. Amphi seating

- 21. Raised seating stage
- 22. Senior citizen lounge
- 23. Entry Plaza

**RERA CARPET AREA : 793 SQ. FT.**

**RERA CARPET AREA : 783 SQ. FT.**

**RERA CARPET AREA : 1120 SQ. FT.**



**RERA CARPET AREA : 1141 SQ. FT.  
BALCONY : 44 SQ. FT.**

**RERA CARPET AREA : 1725 SQ. FT.  
BALCONY : 75 SQ. FT.**

**RERA CARPET AREA : 1173 SQ. FT.  
BALCONY : 37 SQ. FT.**



### Typical Floor Plan

1<sup>st</sup>, 2<sup>nd</sup>, 3<sup>rd</sup>, 7<sup>th</sup>, 10<sup>th</sup>, 13<sup>th</sup>, 15<sup>th</sup>, 16<sup>th</sup>, 18<sup>th</sup>, 19<sup>th</sup>, 20<sup>th</sup>, 23<sup>rd</sup>, 25<sup>th</sup>, 27<sup>th</sup>, 28<sup>th</sup>, 30<sup>th</sup>

The project has been registered via Maha RERA registration number: PS1800028086  
Floor plan is for marketing purpose and is to be used as a guide only. Floor plan is intended to give a general indication of the proposed floor layout only and may vary in the finished building. All drawings/dimensions shown are for illustrative purposes only and may not be accurate representations of final construction and are not intended to form part of any contract or warranty unless specifically incorporated in writing into the contract. Please ask our sales adviser for details of the treatments specified for individual Apartments/Flat/Permissible Shops.