

Upscale lifestyle.

# E

## Excellence in modern real estate development

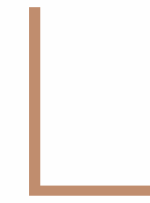
Divine Group, a premier real estate developer in Ahmedabad & Gandhinagar, excels in creating luxurious residential and commercial properties. With a focus on innovative design, craftsmanship, and sustainability, our projects blend aesthetics with functionality. Committed to customer satisfaction, Divine Group fosters vibrant communities and modern living spaces that enhance lifestyles.

A PROJECT BY  
**DIVINE**   
GROUP

DIVINE  
sanidhya

3  
BHK Upscale  
Lifestyle

Experience the luxurious 3 BHK lifestyle at Divine Sanidhya, where spacious layouts meet modern amenities. Enjoy a vibrant community that reflects elegance, comfort, and the essence of contemporary living.



**Live above  
the ordinary with  
panoramic views**

Discover the essence of elevated living at Divine Sanidhya. Experience podium living that provides an exclusive lifestyle, where panoramic views blend with thoughtfully designed spaces, offering a seamless connection to nature and the vibrant cityscape.

DIVINE  
sanidhya





### Amenities for the self betterment



GYMNASIUM



LIBRARY  
AREA



WFH  
SPACE



WALKING  
TRACK



OPEN YOGA  
DECK AREA



SWING  
PLAZA



W

Where elegance  
meets everyday  
comfort

Step into a living room that exudes both comfort and sophistication. With elegant finishes and cozy interiors, this space is designed to be the heart of your home, perfect for unwinding and enjoying quality time with loved ones.

DIVINE  
sanidhya



### Joyful childhood spaces



PICKLE BALL



INDOOR GAMES



AMPHITHEATRE



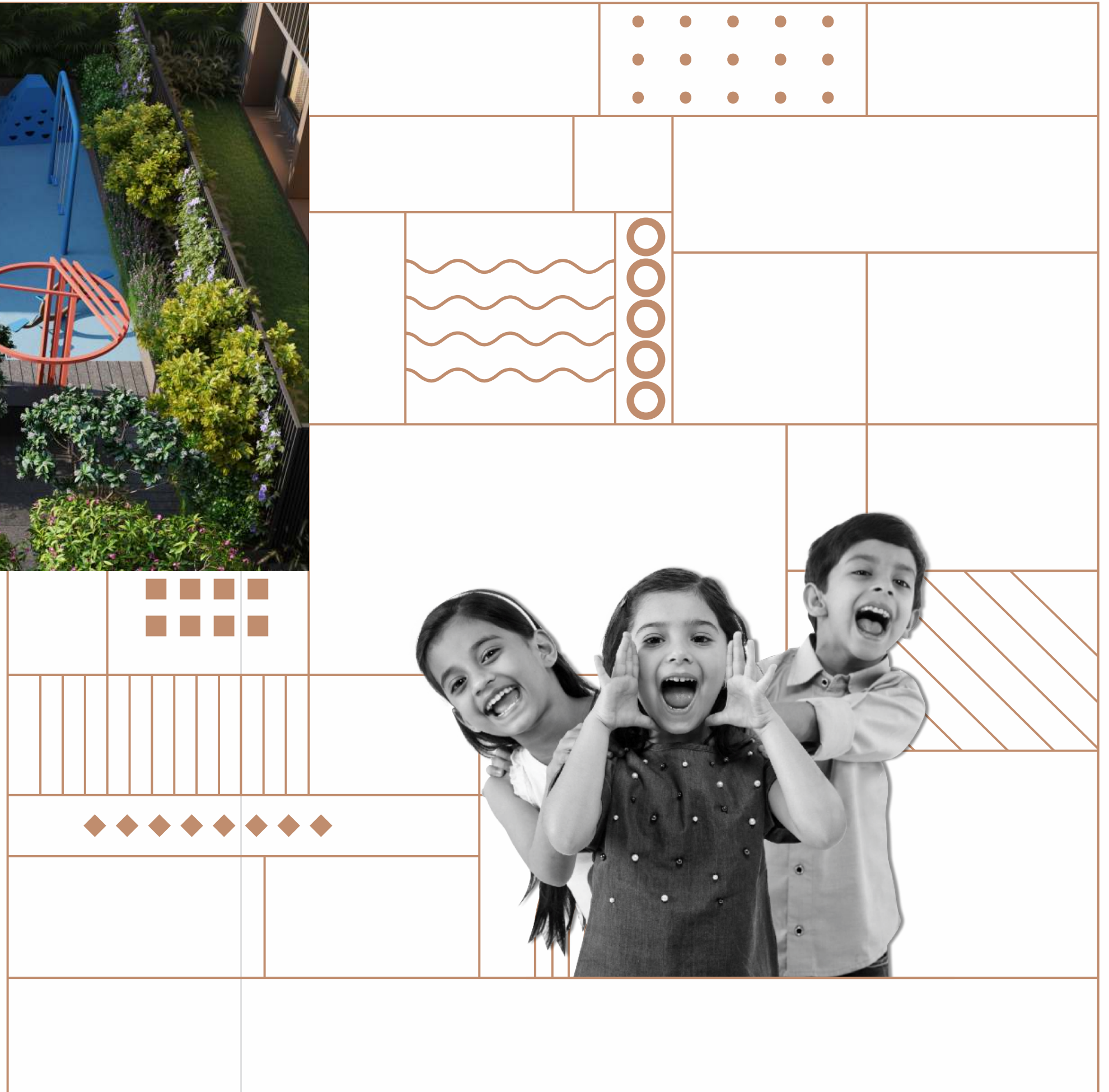
TODDLERS PLAY AREA



SPLASH POOL



CHILDREN PLAY AREA





F

Fun  
and laughter for  
little ones

Designed for the joy of children, the splash pool at Divine Sanidhya offers a playful, safe, and exciting space for kids to cool off and have fun. It's not just a pool—it's a spot where childhood memories are made.

DIVINE  
sanidhya



### Serene environment

  
THERAPEUTIC  
ZEN PLANTATION

  
GREEN  
PLANTER

  
OXY  
RICH ZONE

  
DENSE  
LANDSCAPE

  
AROMA  
GARDEN

  
GAZEBO WITH  
ART INSTALLATION

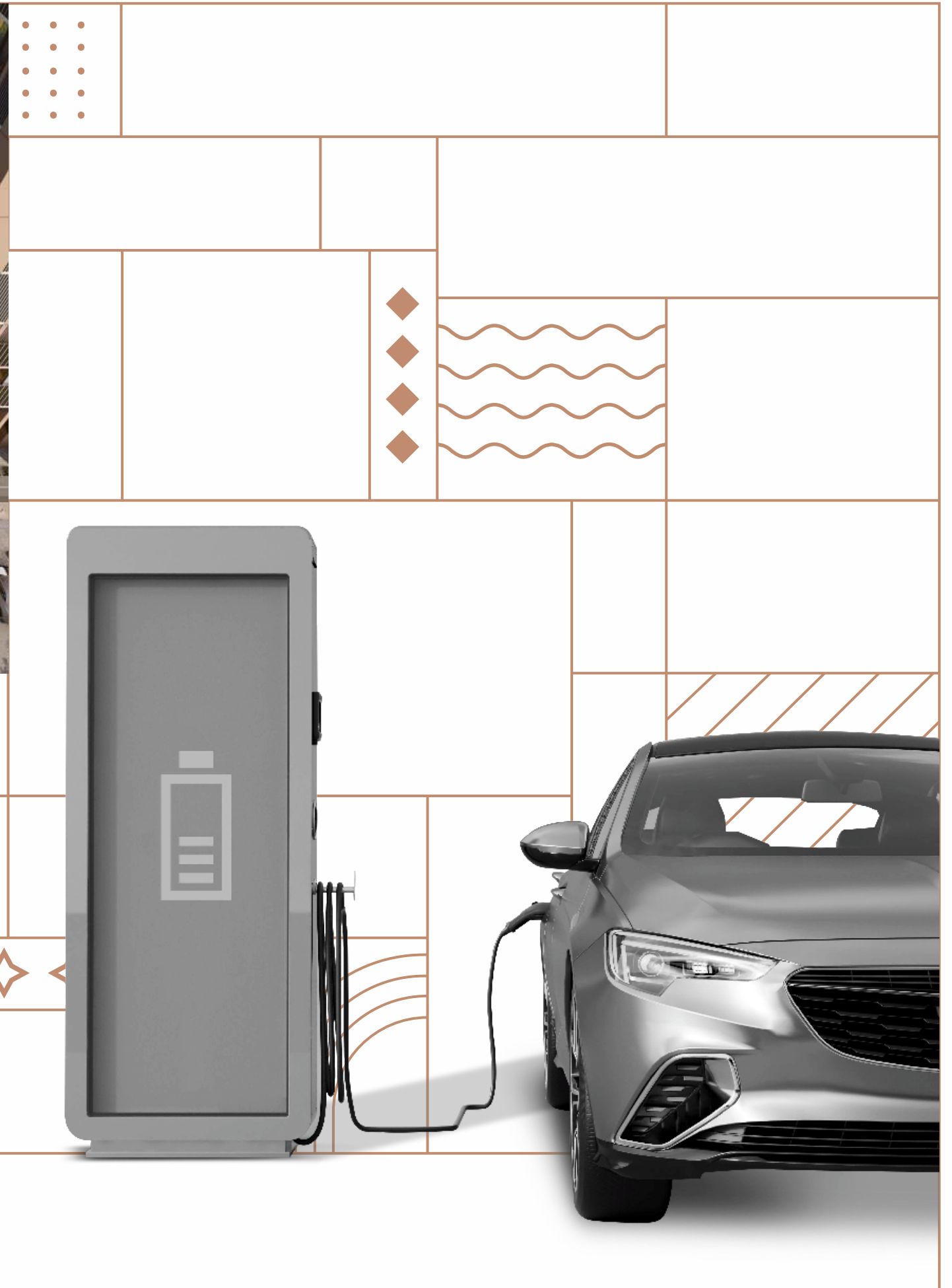


R


Relax and unwind  
in our nature-inspired  
club house


Breathe in the fresh air at our clubhouse, thoughtfully designed to provide a refreshing escape. Enjoy nature-inspired decor and open spaces that promote relaxation, well-being, and social interaction.


DIVINE  
sanidhya





### Enhanced living features


- 

GUEST BEDROOM
- 

PERSONAL EV CHARGING POINT
- 

SOLAR ENERGY FOR COMMON AREAS
- 

DESIGNATED CAR PARKING
- 

AMPLE 2 WHEELER PARKING
- 

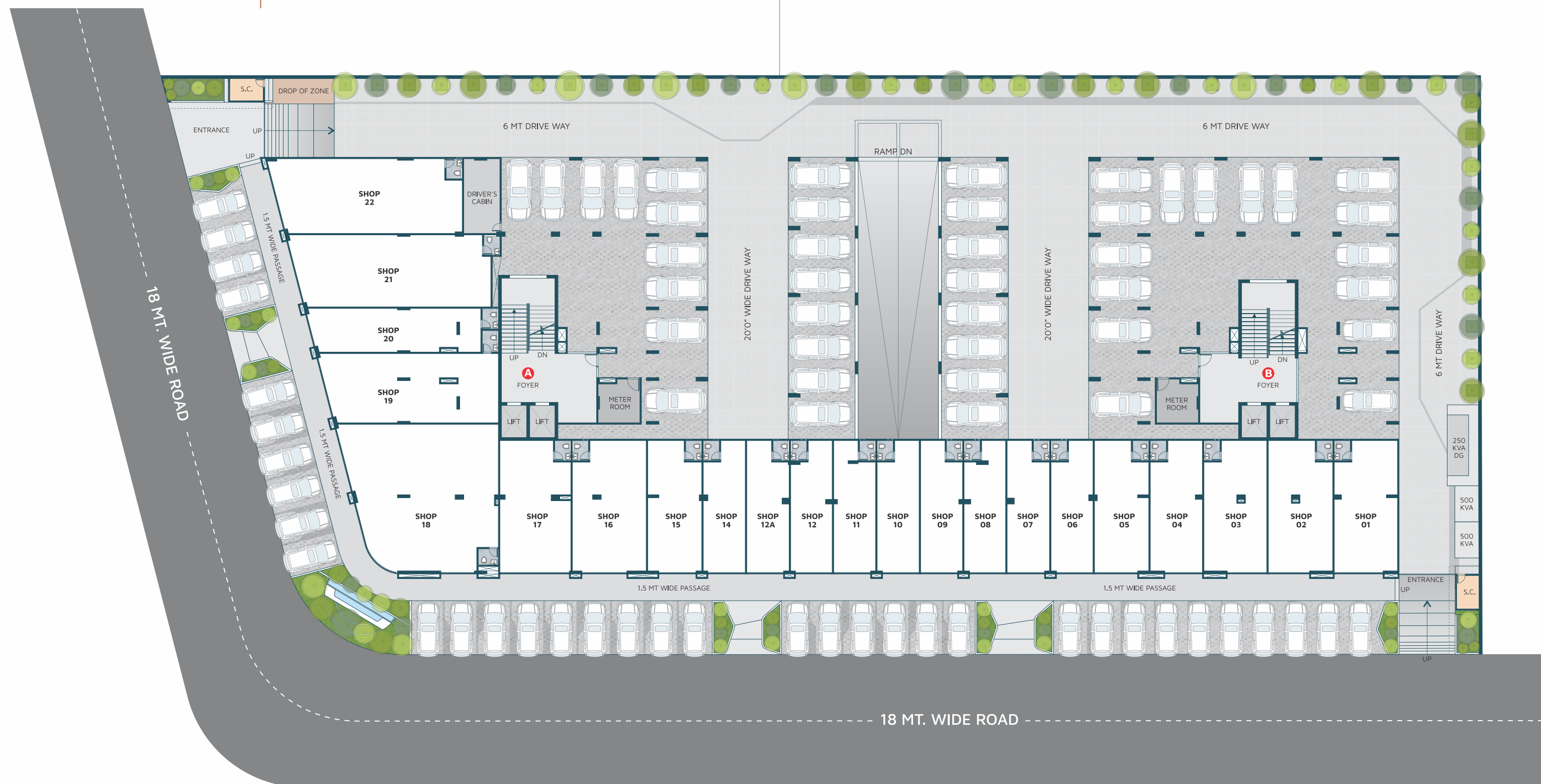
HOT WATER LINE PROVISION IN KITCHEN

## OTHER GRAND FEATURES

WFH	C.C.T.V CAMERAS	HEAVY-DUTY WATER PUMP	DESIGNATED FREE CAR PARKING
LIBRARY AREA & STUDY ZONE	24X7 POWER BACKUP FOR THE COMMON AREA	ELECTRIC METER ROOM	HANDICAP RAMP
CONGREGATION ZONE	HOT WATER LINE PROVISION IN THE KITCHEN	SECURITY CABIN/24X7 SECURITY	CHILDREN PICK UP AND DROP ZONE
FIRST IMPRESSION ZONE	RAINWATER HARVESTING SYSTEM	BOOM BARRIER ENTRY & EXIT	CLUB HOUSE
SERVICES ZONE	PERCOLATION WELL	ADMIN OFFICE	EV CHARGING POINT TO EACH PERSONAL PARK
STAFF & OPERATIONS ZONE	24X7 WATER SUPPLY	DELIVERY/COURIER POINT	RO WATER COOLER-COMMON
CIRCULATION ZONE	ADANI PNG	COMMON STOREROOM	MULTIPURPOSE COURT (PICKLE BALL)
FLOORING WITH GRASS GRID	SOLAR ENERGY FOR COMMON AREAS	STAFF RESTROOM	BICYCLE STAND
GUEST BEDROOM	FIRE SAFETY EQUIPMENT	DRIVER ROOM WITH TOILET	AMPLE 2-WHEELER PARKING



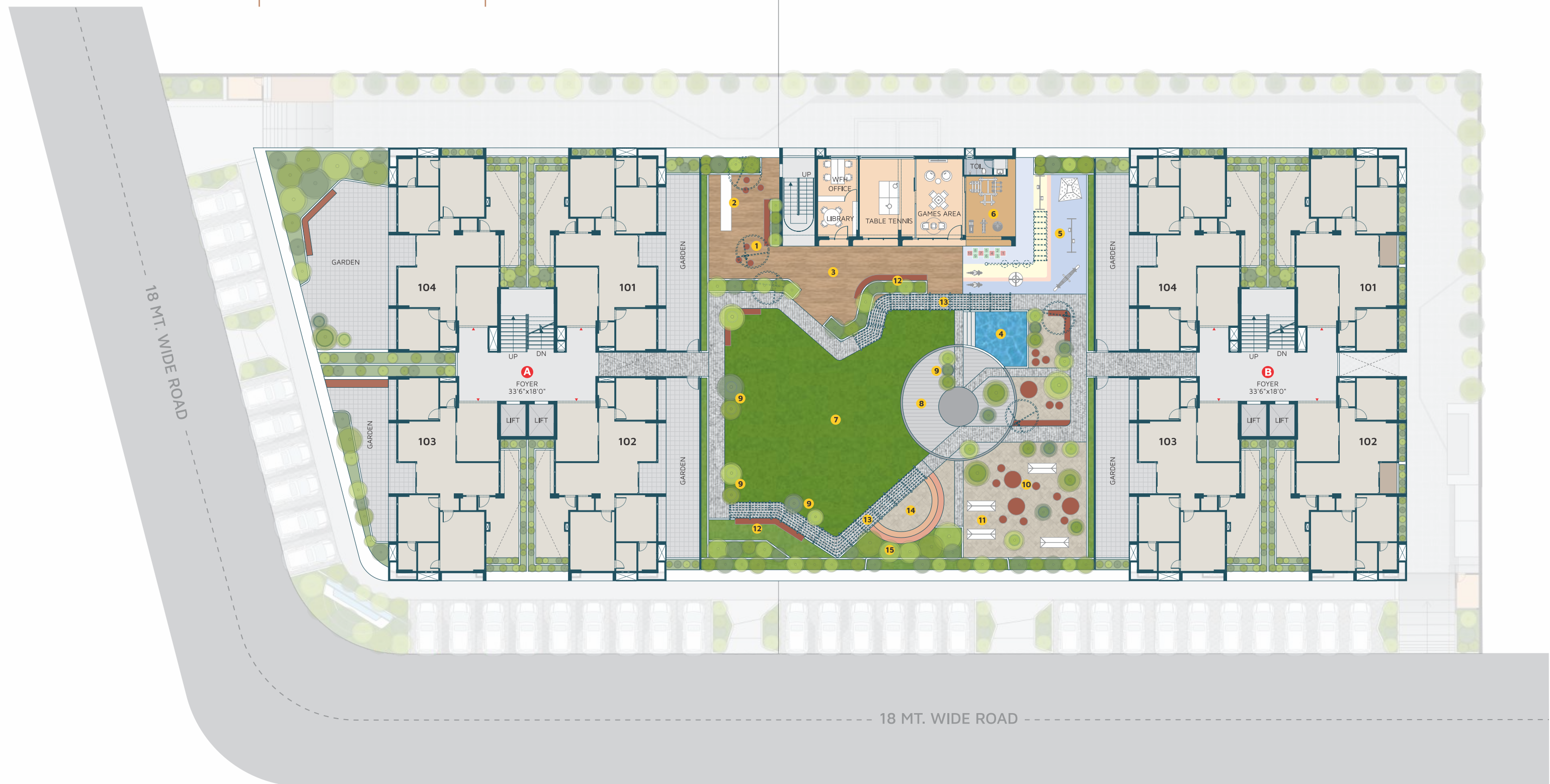
# GROUND FLOOR



## FIRST FLOOR (PODIUM)

### LEGEND

- |                                     |                               |                          |
|-------------------------------------|-------------------------------|--------------------------|
| 1- Senior citizen area with pergola | 6- Toddlers play area         | 11- Swing plaza          |
| 2- Outdoor kitchen                  | 7- Lawn space and event space | 12- Planter with seating |
| 3- Deck area for yoga               | 8- Flooring with grass grid   | 13- Walking trail        |
| 4- Splash pool                      | 9- Loose planter              | 14- Amphitheater         |
| 5- Kid's play area                  | 10- Loose seating             | 15- Planter              |



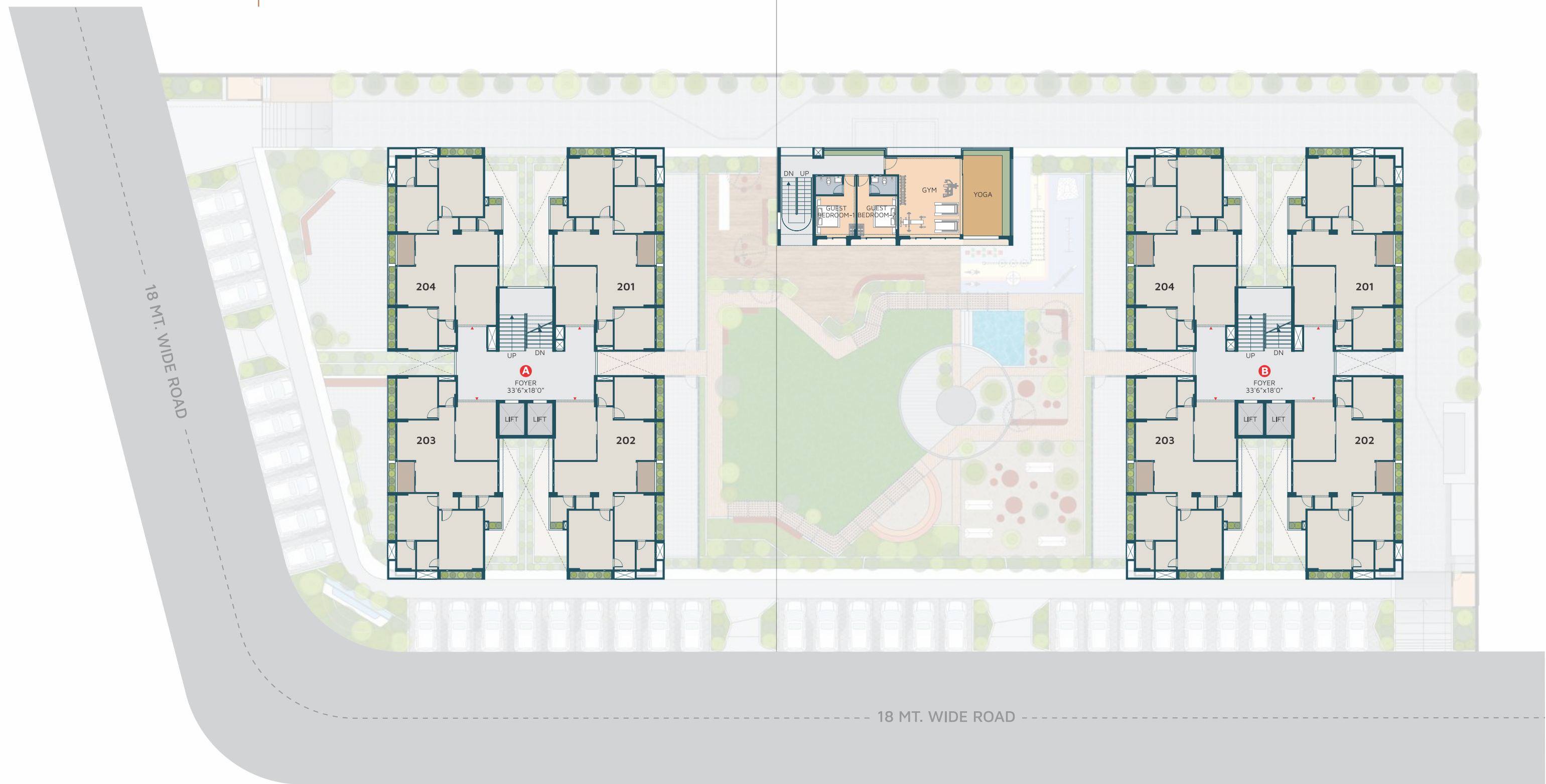
F

Fitness,  
entertainment and  
fun, all in one

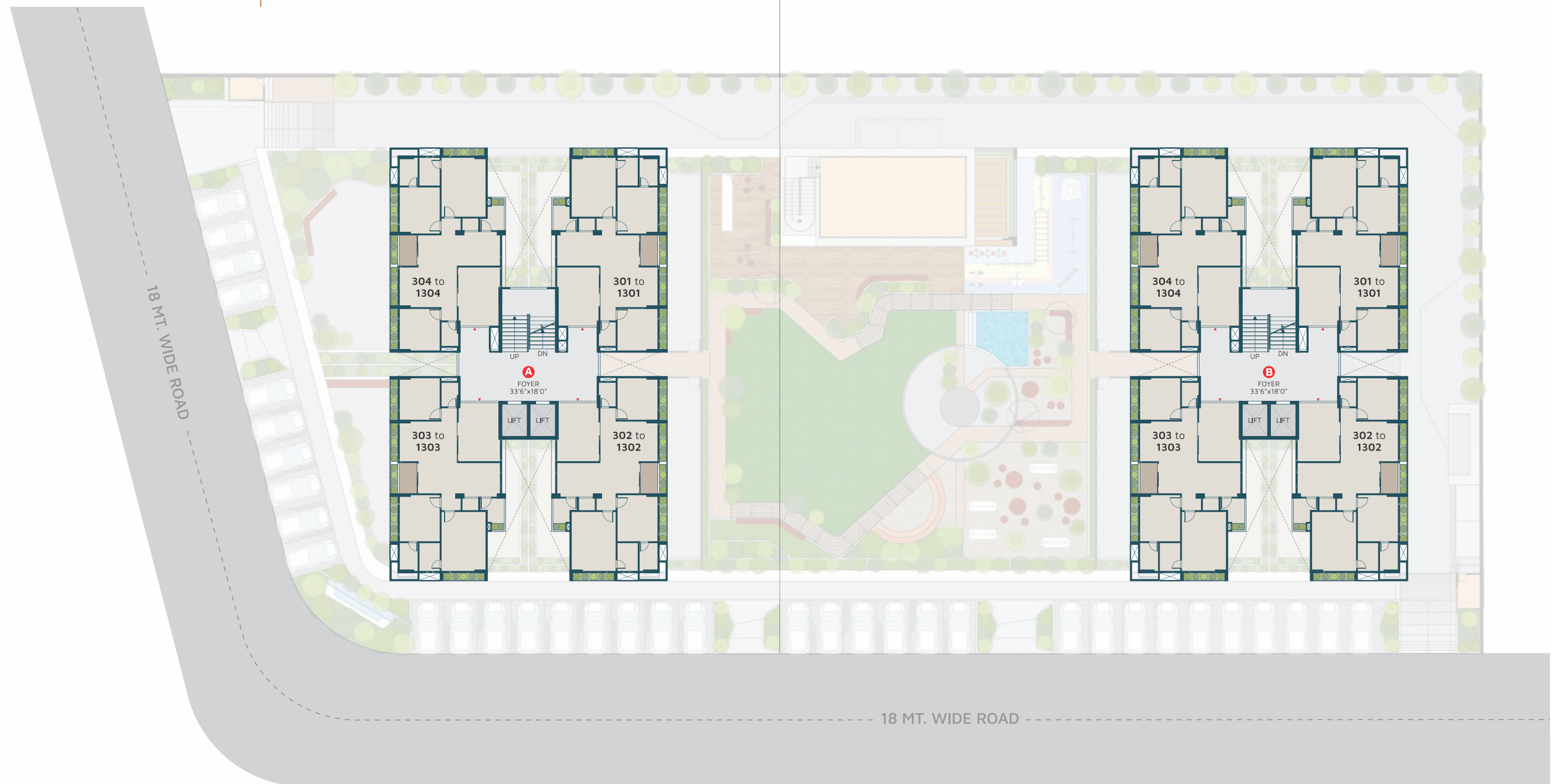


Stay active and energized in our cutting-edge gym and indoor gaming area, which has modern facilities and equipment. Enjoy a variety of activities, including cardiovascular workouts and leisure games, which will appeal to both fitness enthusiasts and casual gamers looking for a balanced lifestyle.

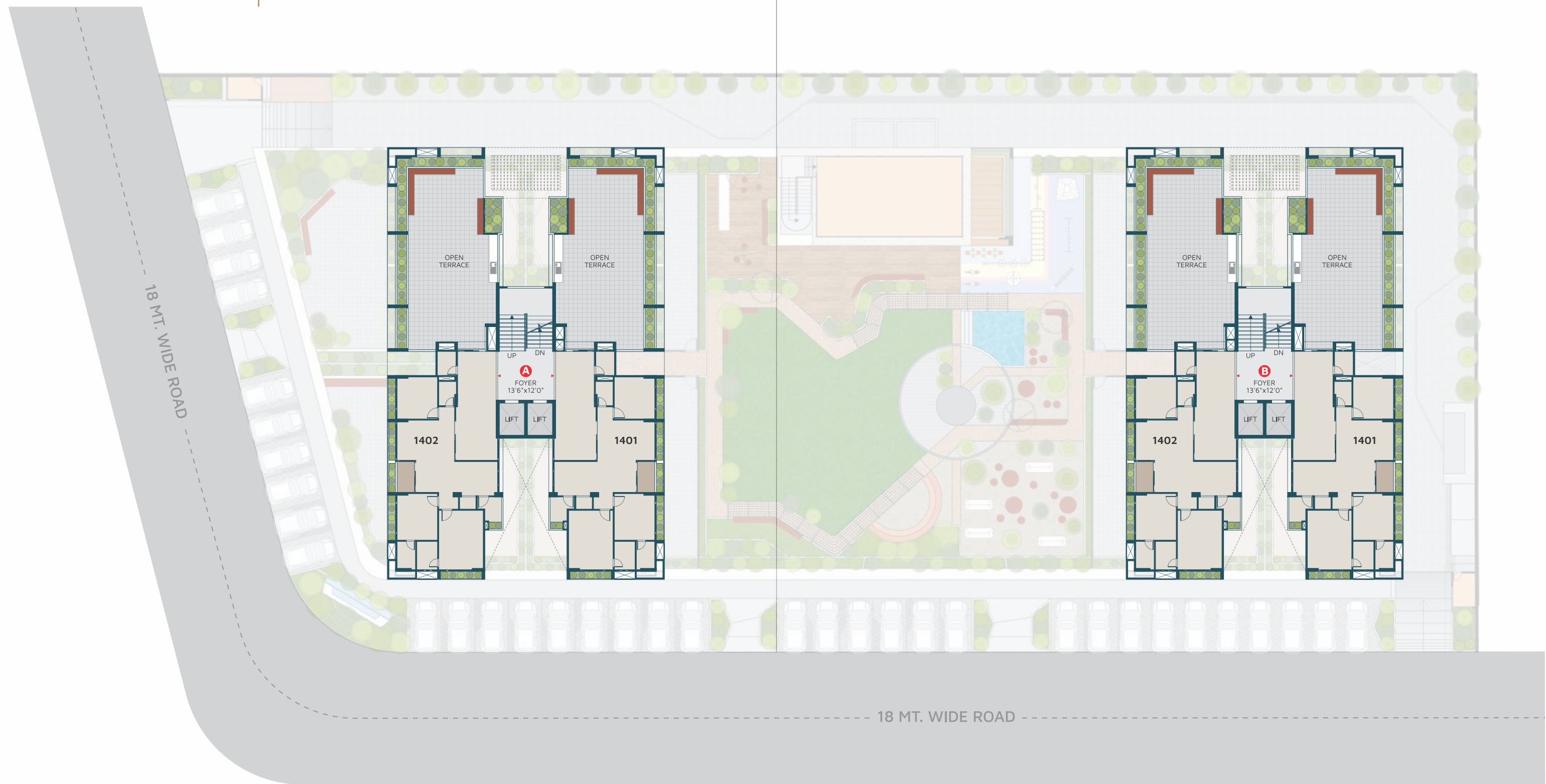
SECOND FLOOR



**TYPICAL FLOOR**  
(3rd to 13th Floor)



**PENTHOUSE FLOOR**  
(14th Floor)



# G

Get welcomed  
by grandeur and  
knowledge

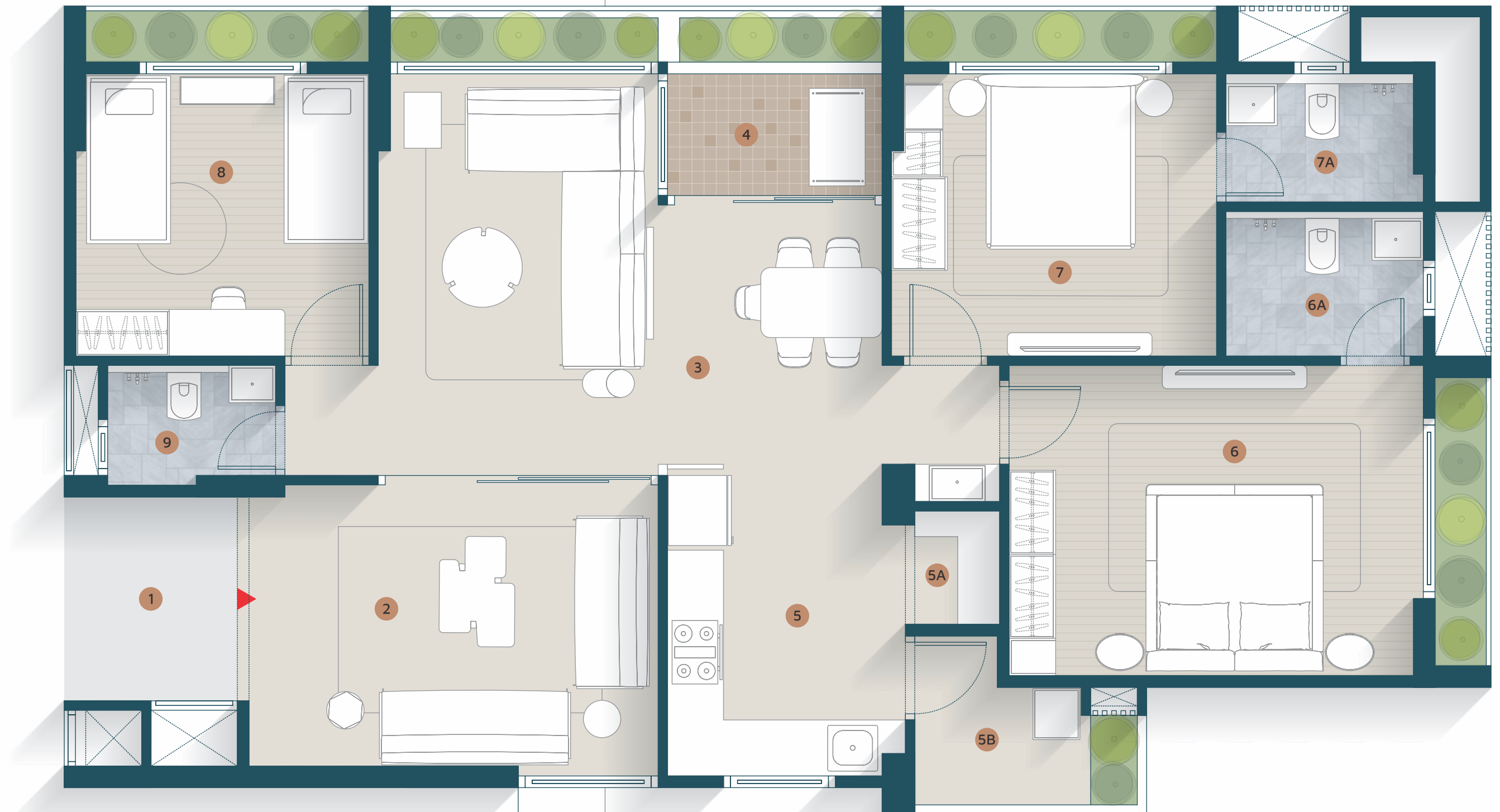


Be greeted by a grand foyer that sets the tone for the opulent living space beyond. The cozy library that offers a serene escape, encouraging enlightenment and relaxation within a thoughtfully designed, tranquil space filled with inspiring books and comfortable seating.

## 3 BHK

### LEGEND

1	Foyer	
2	Personal Foyer	14'6" x 10'0"
3	Living / Dining	17'9" x 14'0"
4	Balcony	7'9" x 4'3"
5	Kitchen	8'6" x 10'6"
5A	Store	3'0" x 4'0"
5B	Wash area	8'0" x 6'3"
6	Master bedroom	15'0" x 11'0"
6A	Toilet	7'0" x 5'0"
7	Bedroom-2	11'6" x 10'0"
7A	Toilet	7'0" x 4'6"
8	Bedroom-3	10'3" x 10'0"
9	C. Toilet	6'0" x 4'3"



### 3 BHK (Penthouse Unit)

#### LEGEND

1	Foyer		8	Master bedroom	15'0" x 11'0"
2	Personal Foyer/ Formal living	27'2" x 9'5"	8A	Toilet	7'0" x 5'0"
3	Store	5'10" x 4'6"	9	Bedroom-2	11'6" x 10'0"
4	Family living	9'10" x 14'1"	9A	Toilet	7'0" x 4'6"
5	Balcony	7'9" x 4'3"	10	Bedroom-3	10'3" x 10'0"
6	Dining	7'10" x 9'6"	11	Toilet	6'0" x 4'3"
7	Kitchen	8'6" x 10'6"	12	Terrace	44'8" x 18'5"
7A	Store	3'0" x 4'0"			
7B	Wash area	8'0" x 6'3"			



C

Crafted  
for comfort and  
serenity



Your bedroom should be a reflection of your personal sanctuary. With carefully curated elements that enhance relaxation and well-being, each bedroom at Divine Sanidhya is designed to provide a restful, rejuvenating experience.

E

Elevate your  
cooking and dining in  
stylish spaces



The heart of the home, our kitchens and dining areas are designed to bring families together. With modern appliances and thoughtfully planned layouts, these spaces offer an inspiring setting for cooking, dining, and sharing meaningful moments with loved ones.



## SPECIFICATIONS

### STRUCTURE

- Earthquake resistant RCC frame structure designed as per IS

### ELECTRICAL

- ISI copper wiring with premium quality
- MCB / ELBC distribution Panel

### PLASTER WORK

- Internal - smooth finish plaster with putty finish
- External - Double coat mala plaster / texture / exterior paint

### FLOORING

- Vitrified tiles flooring in living, dining & kitchen areas
- Premium quality vitrified tiles flooring in bedroom areas
- Natural granite in staircase
- Natural granite slabs for kitchen platform with sink

### PLUMBING & SANITARY WARE

- Top of the line CP fittings
- Premium quality sanitary fittings
- Premium quality CPVC - UPVC pipes

### PARKING

- Allotted car parking
- Provision for EV charging

### ELEVATORS

- Premium quality high speed elevator

### DOORS & WINDOWS

- Decorative main door with laminate finish with wooden framing
- High grade Aluminum sliding window

### INTERNAL DOORS

- Premium flush door shutters finished with paint on both sides



DEVELOPER

**DIVINE**  
GROUP

ARCHITECT  
OPEN IDEAS

LANDSCAPE  
2+2 STUDIOS

STRUCTURAL  
CONSULTANTS  
A & R  
STRUCTURES

MEPF  
CONSULTANTS  
GALLOPS

DIVINE  
*sanidhya*



**NOTES**

Changes in elevation shall not be allowed to be done by members of society. • All the government & semi-government charges like stamp duty, GST and any other tax by state or central government shall be borne by members. Legal documentation charges and Advance maintenance shall be borne by the members separately. • All the rights reserved by a developer to make any changes in the layout plan, exterior elevation, dimension and other details there is to comply with statutory regulation shall be binding to all the members. • Any additional liabilities due to changes in the by laws shall be borne by members. • This brochure is just for an easy presentation of the project and should not be treated as a legal document. • Subject to Ahmedabad jurisdiction. • All pictures of amenities are for imagination only.

**SITE**

B/h. Palm Altezza, Divine Road, Gandhinagar.

**CONTACT**

+91 7070 400 108



SCAN FOR  
LOCATION

PR/GJ/GANDHINAGAR/GANDHINAGAR/Gandhinagar Municipal Corporation/MAA14356/281024/311228 | gujrera.gujarat.gov.in