

# SHILP CELESTIAL

3 BHK APARTMENTS AND SHOPS  
@ VAISHNOW DEVI JUNCTION

A PROJECT BY SHILP INFRAPROJECTS PVT LTD

# BUILDING ELEVATION



# BASEMENT ONE



ROAD

# BASEMENT TWO



24.00 MTR. WIDE T.P.S. ROAD

12.00 MTR. WIDE SERVICE ROAD

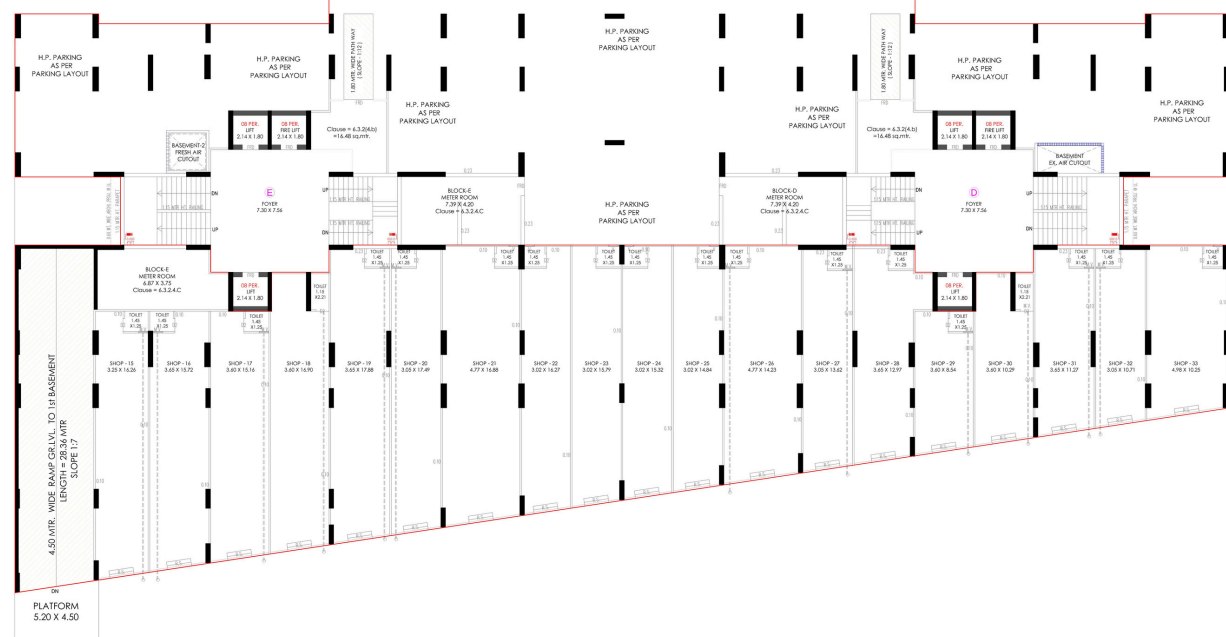
ADJ. F.P. - 10

ADJ. F.P. - 10

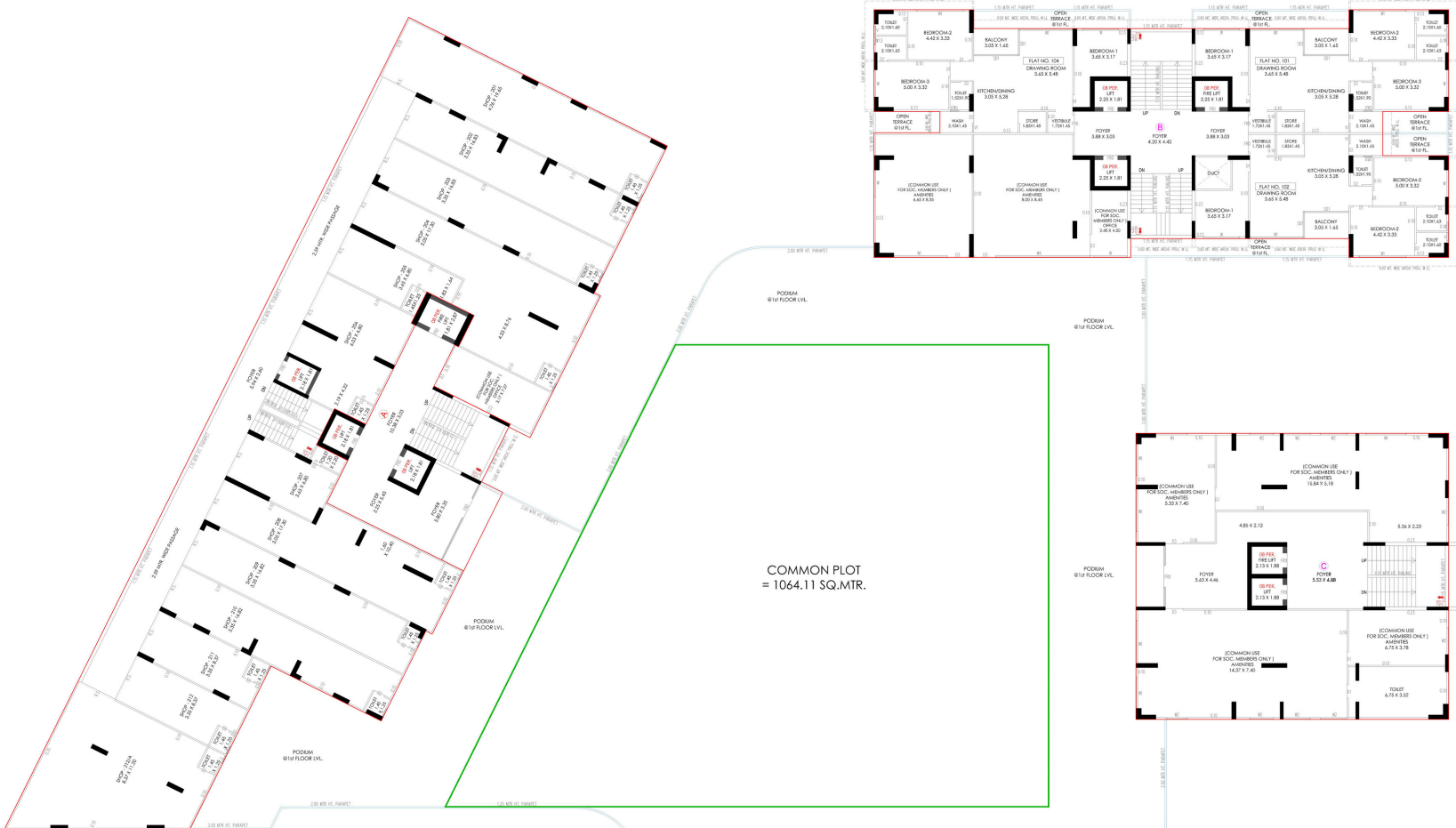
# GROUND FLOOR



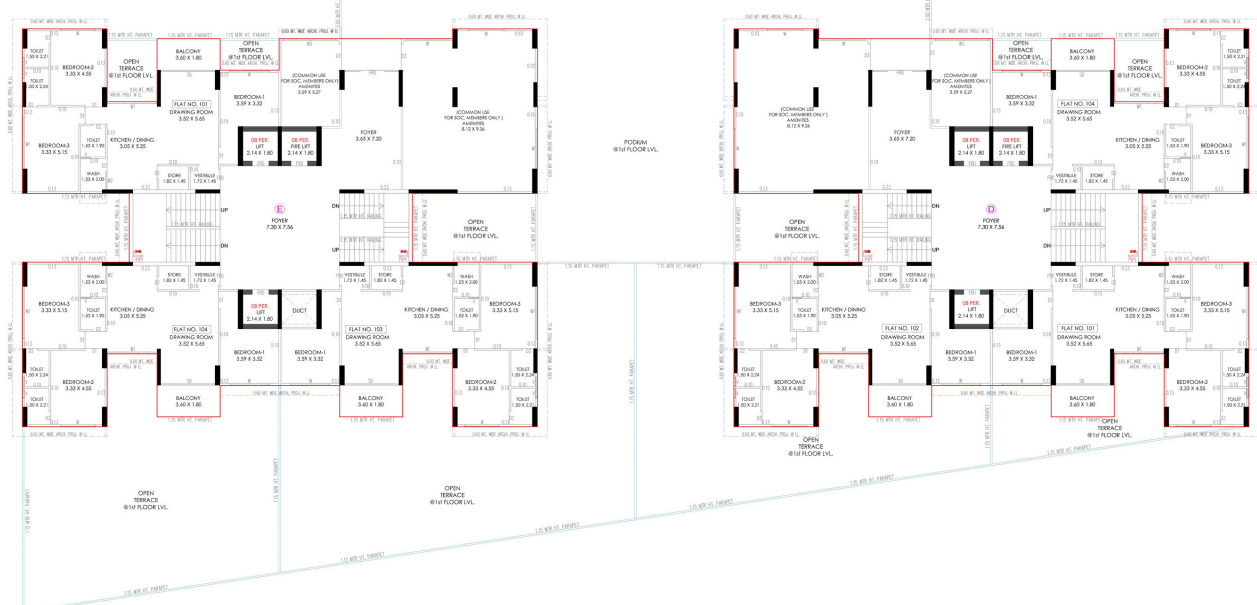
GROUND FLOOR PLAN



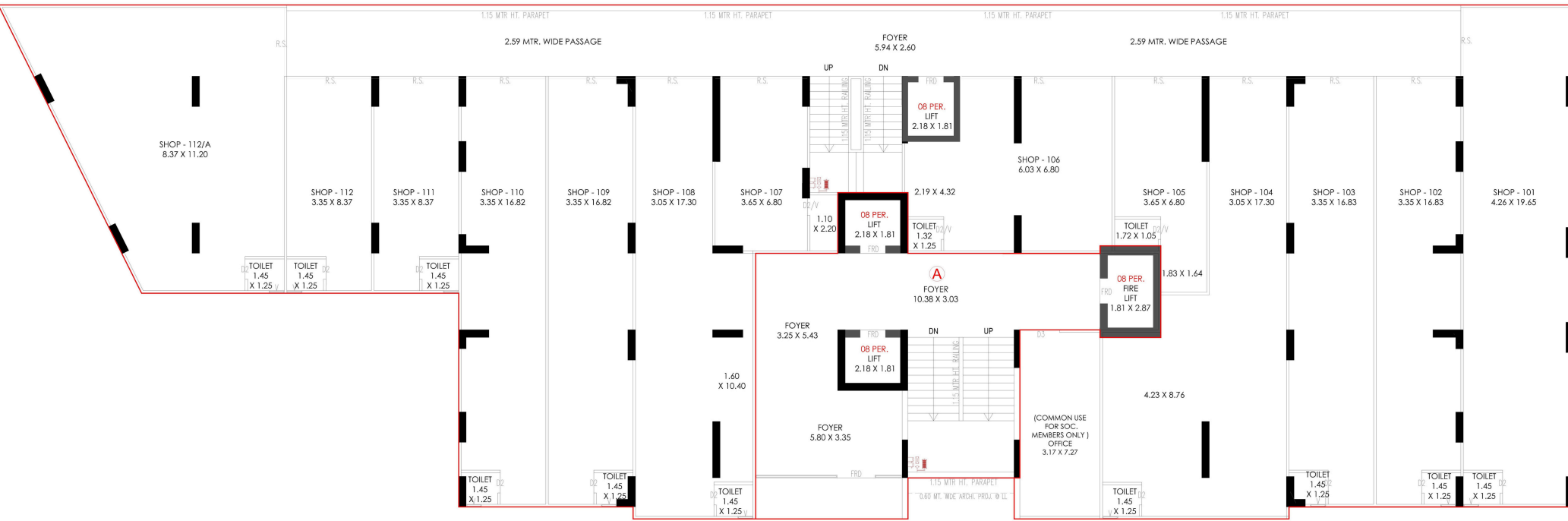
# PODIUM FLOOR



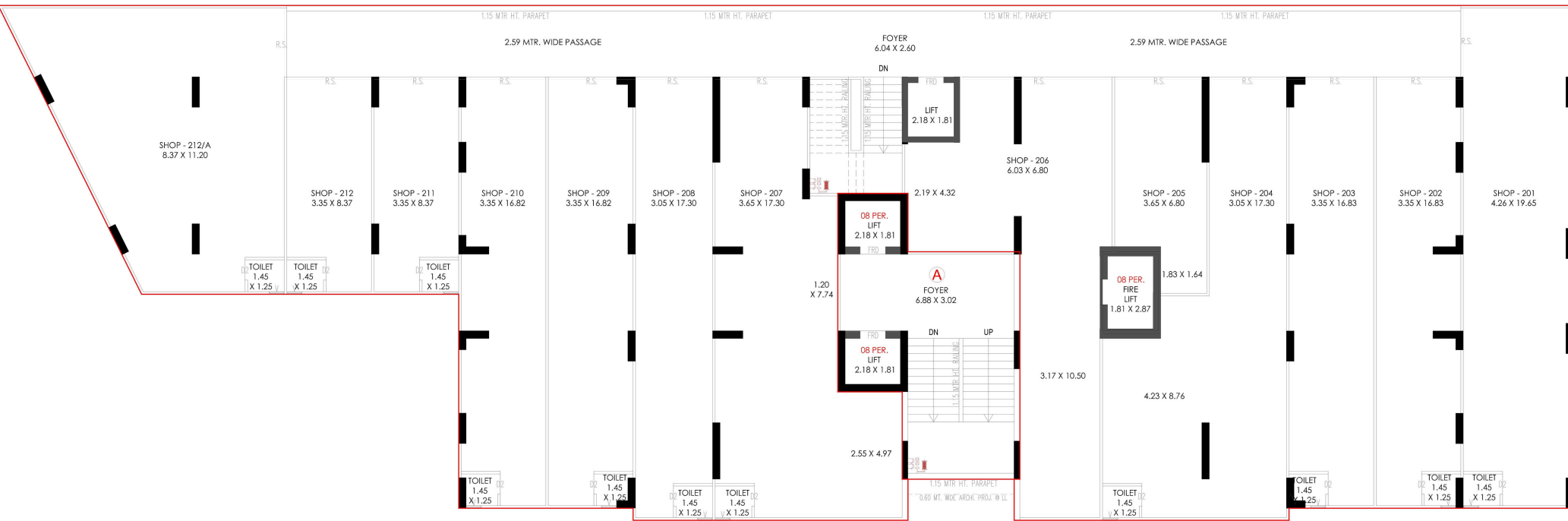
PODIUM FLOOR PLAN @1st FLOOR LVL.



# BLOCK A 1ST& 2ND FLOORS

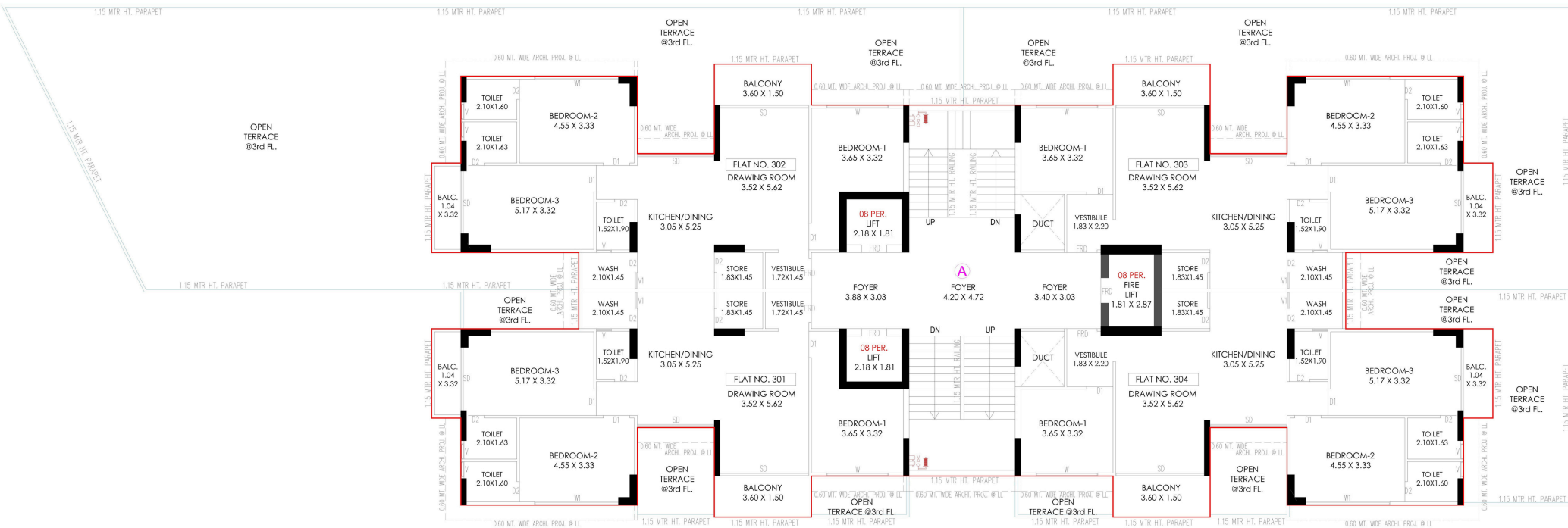


1st FLOOR PLAN (RESI.) + ( COMM. )



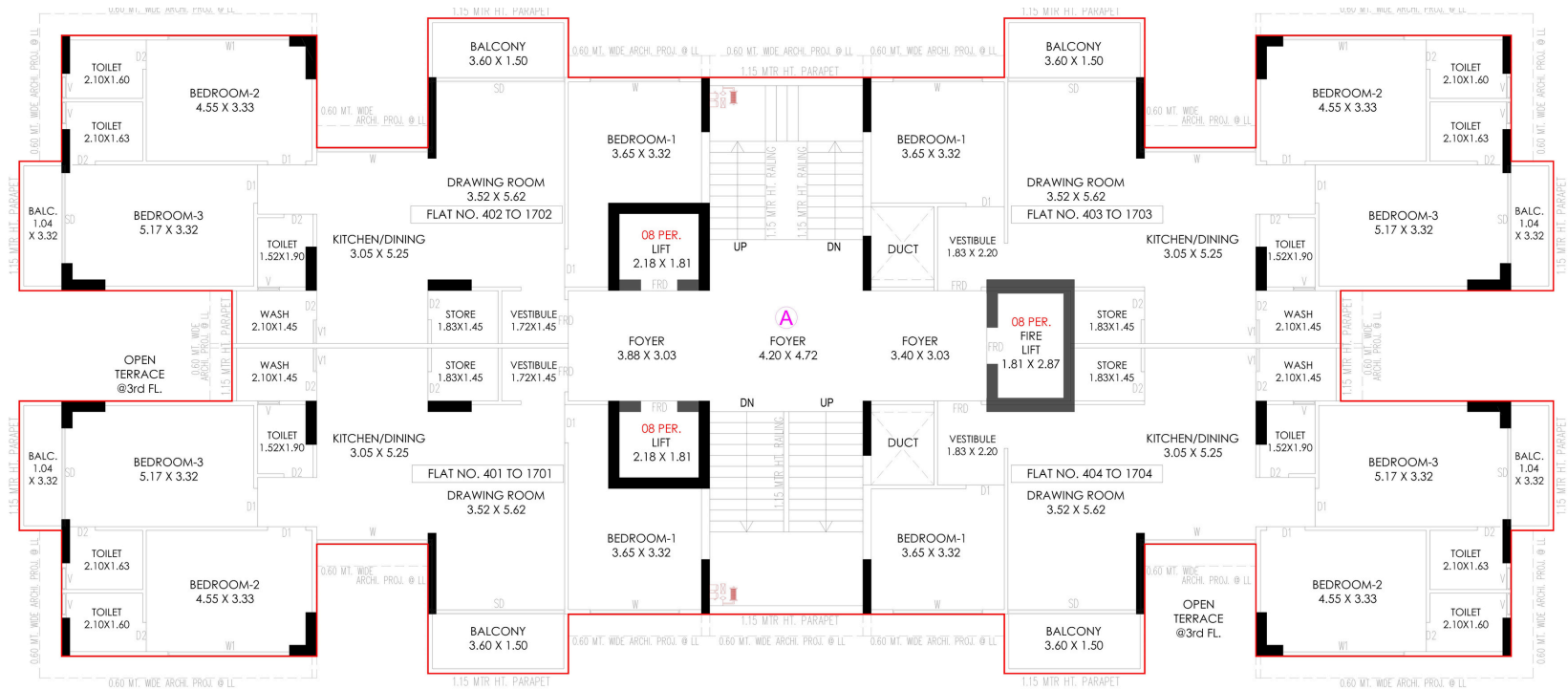
2nd FLOOR PLAN (RESI.) + ( COMM. )

# BLOCK A 3RD FLOOR

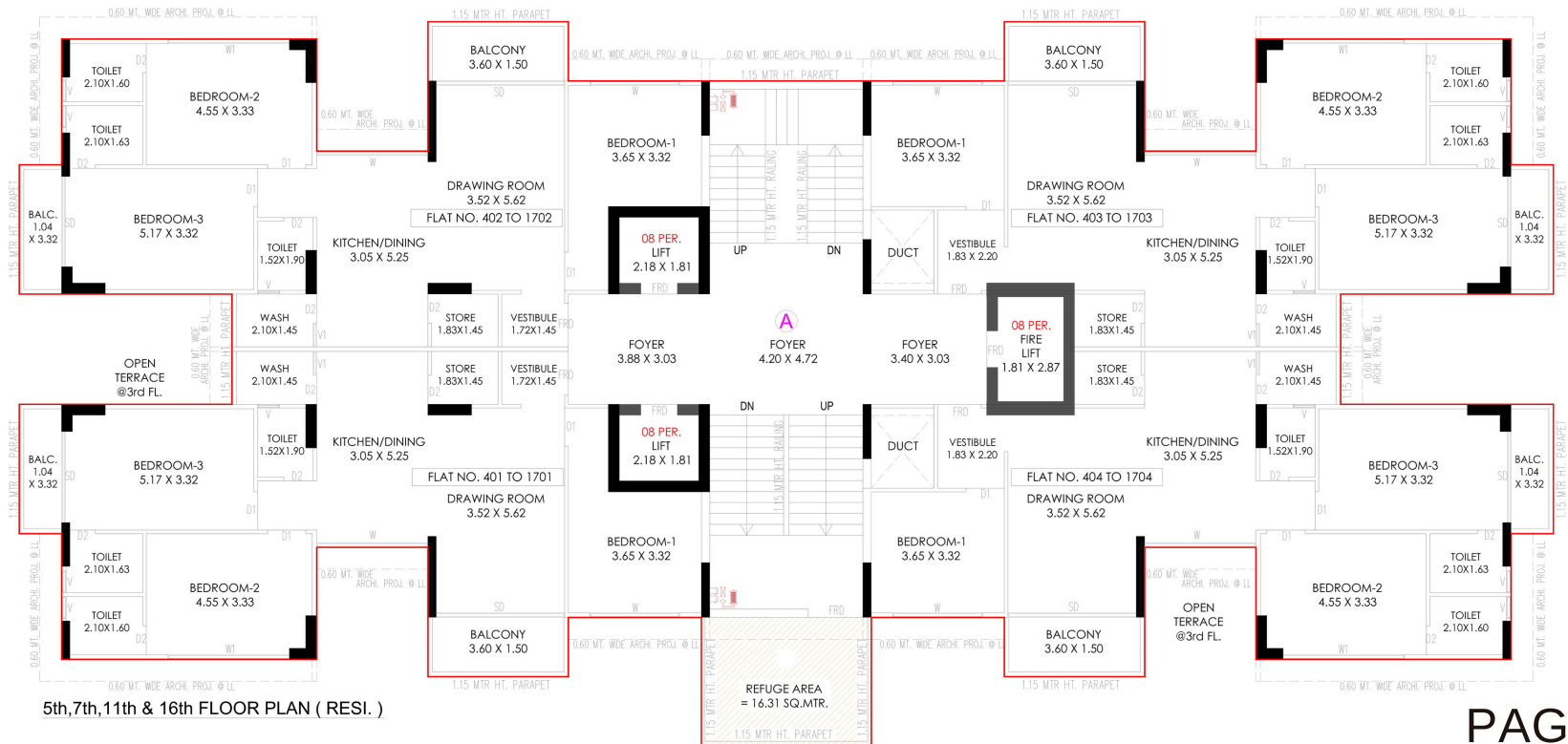


3rd FLOOR PLAN (RESI.)

# BLOCK A 4TH TO 17TH FLOOR



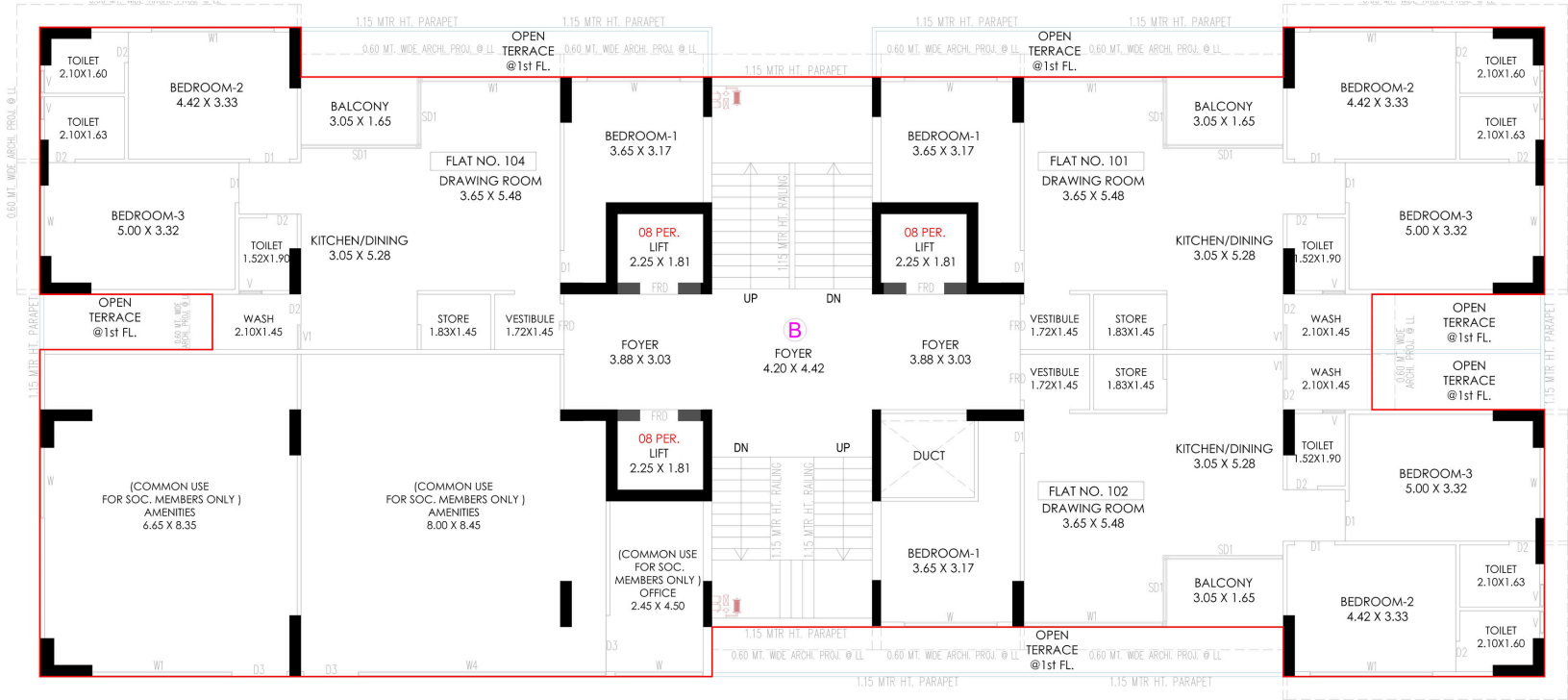
4th,6th,8th to 10th,12th to 15th & 17th FLOOR PLAN ( RESI. )



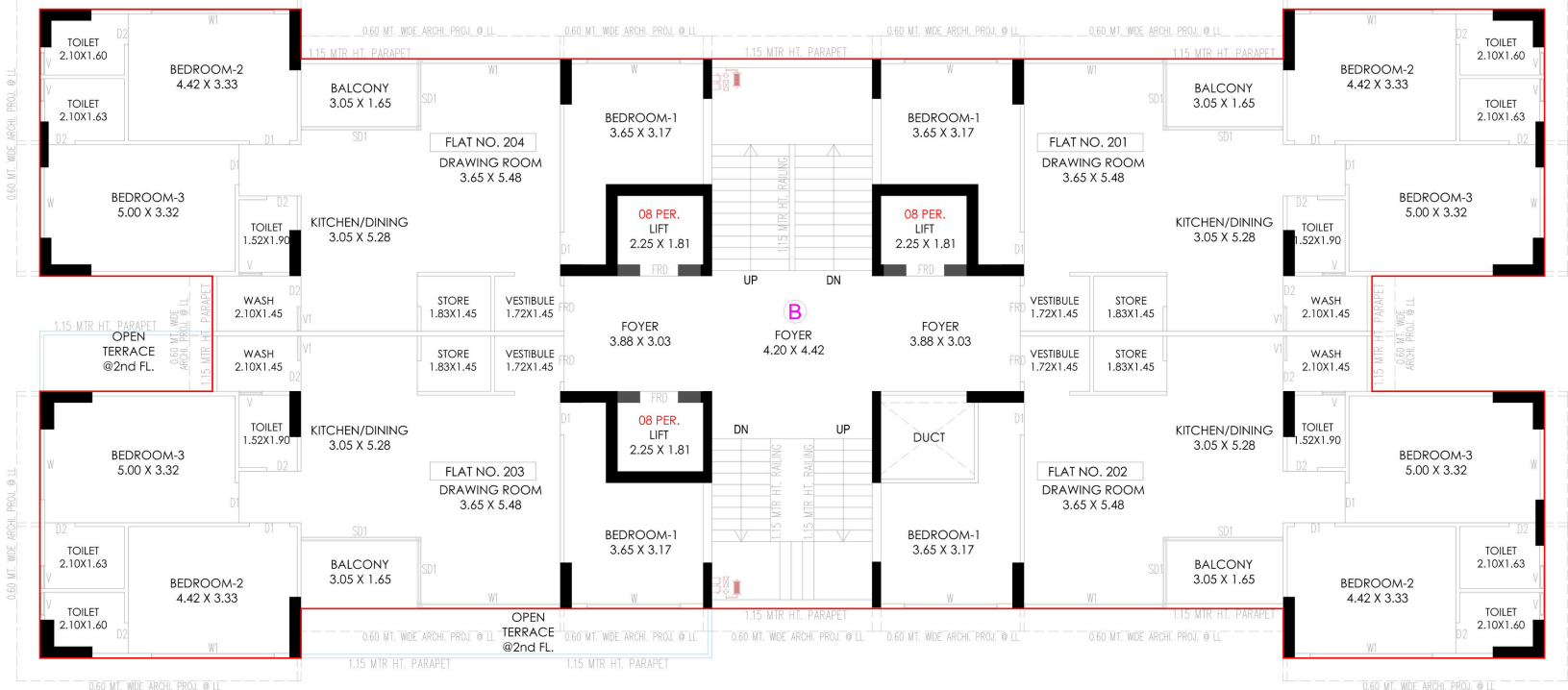
5th,7th,11th & 16th FLOOR PLAN ( RESI. )



# BLOCK B 1ST& 2ND FLOORS



1st FLOOR PLAN ( RESI. )

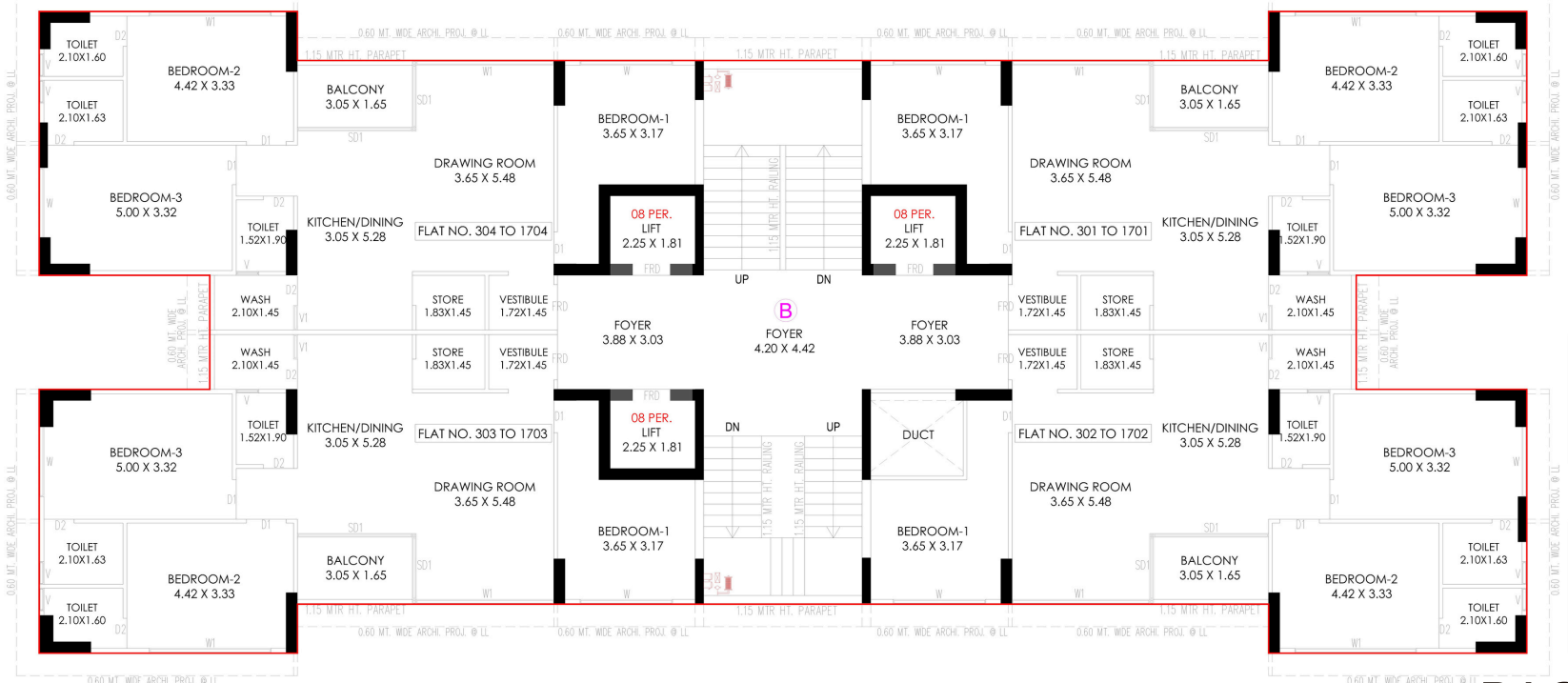


2nd FLOOR PLAN ( RESI. )

# BLOCK B 3RD TO 17TH FLOOR

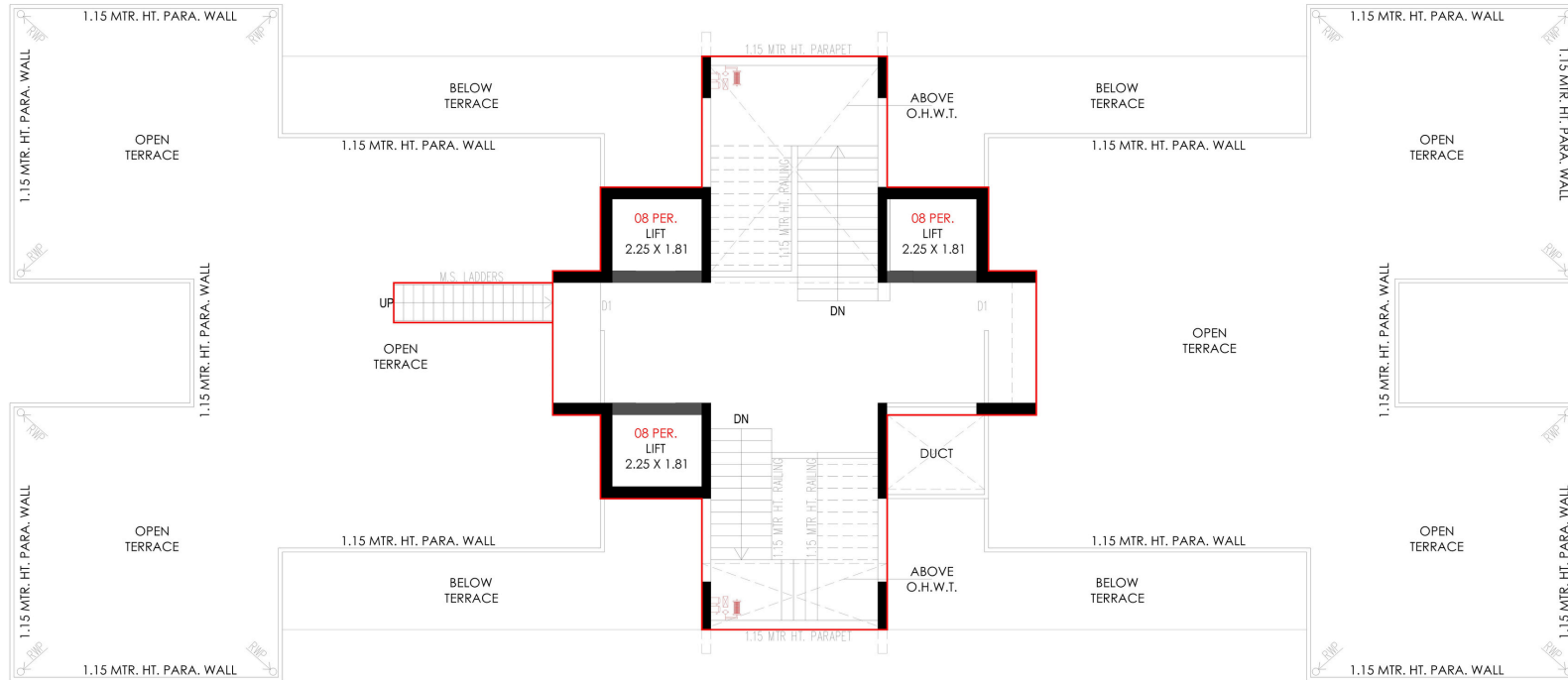


5th,7th,11th & 16th FLOOR PLAN ( RESI. )

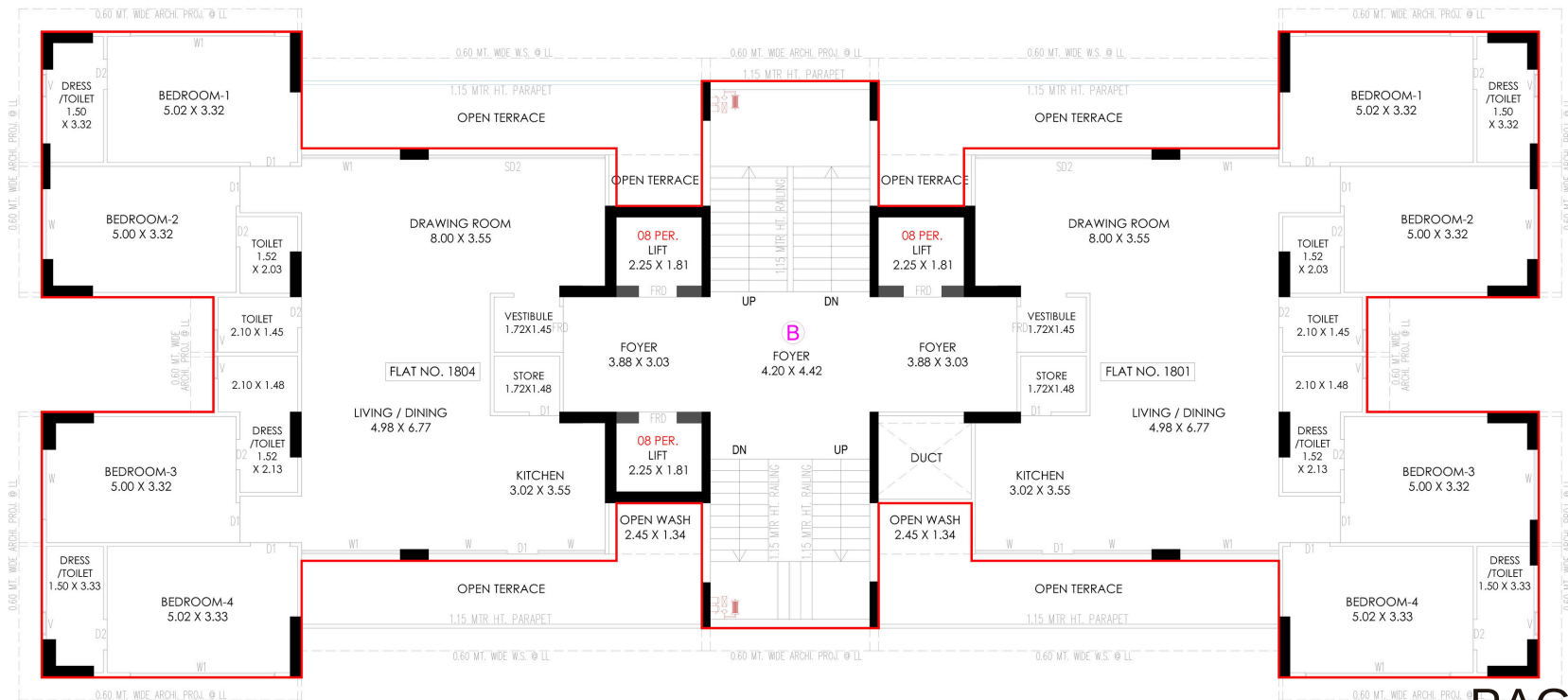


3rd,4th,6th,8th to 10th,12th to 15th & 17th FLOOR PLAN ( RESI. )

# BLOCK B 18TH FLOOR & TERRACE

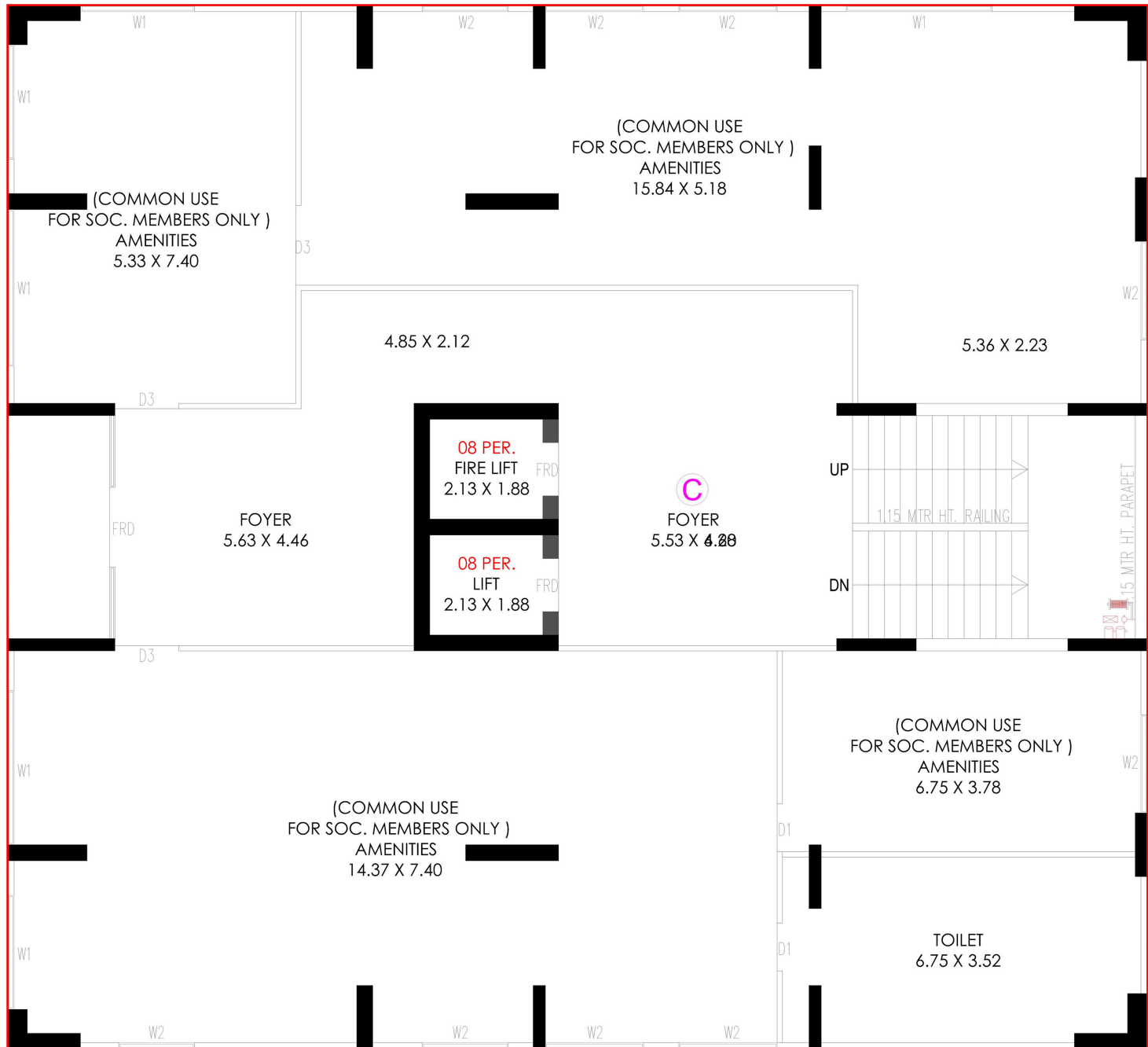


TERRACE PLAN



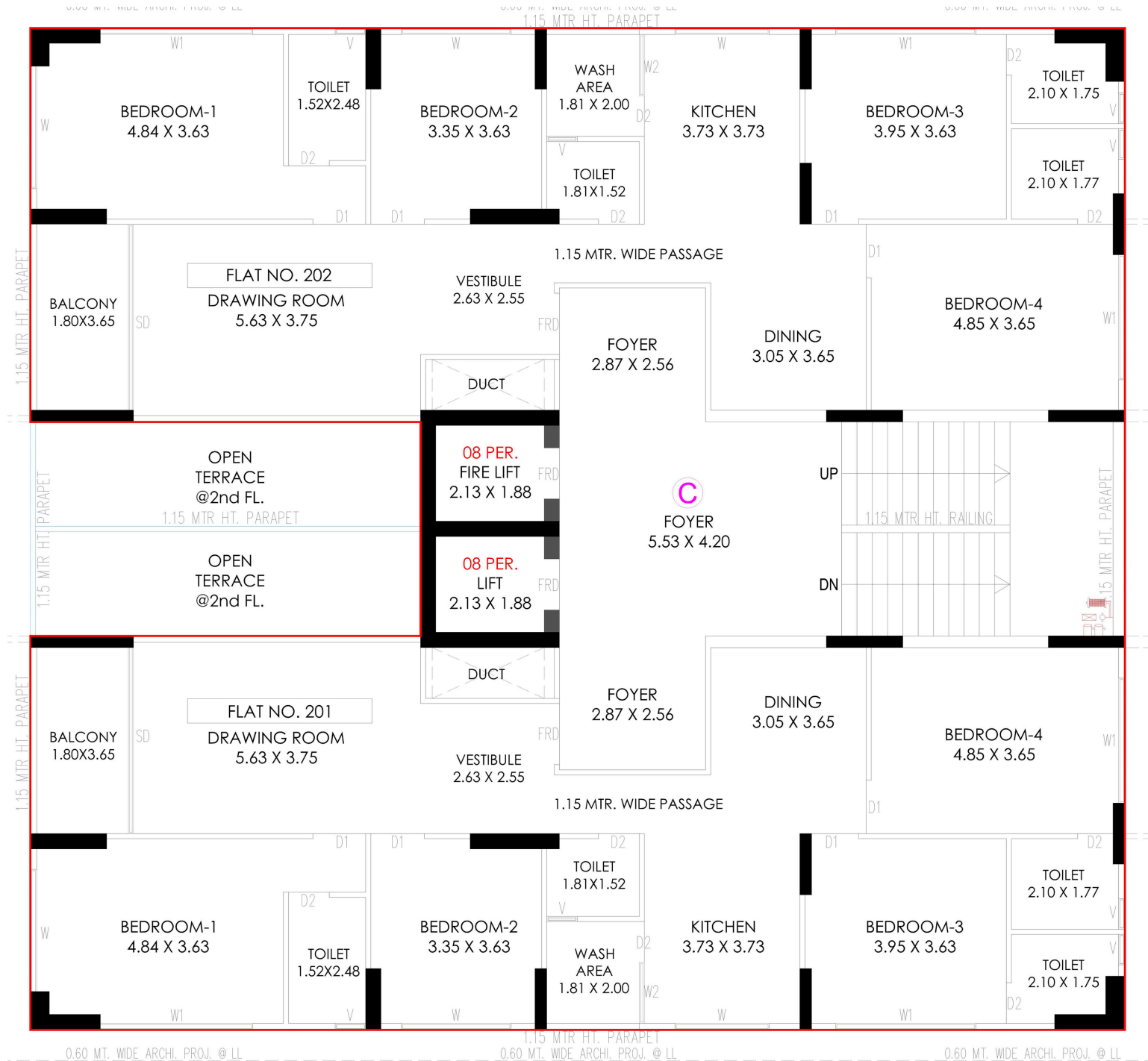
18th FLOOR PLAN ( RESI. )

# BLOCK C 1ST FLOORS



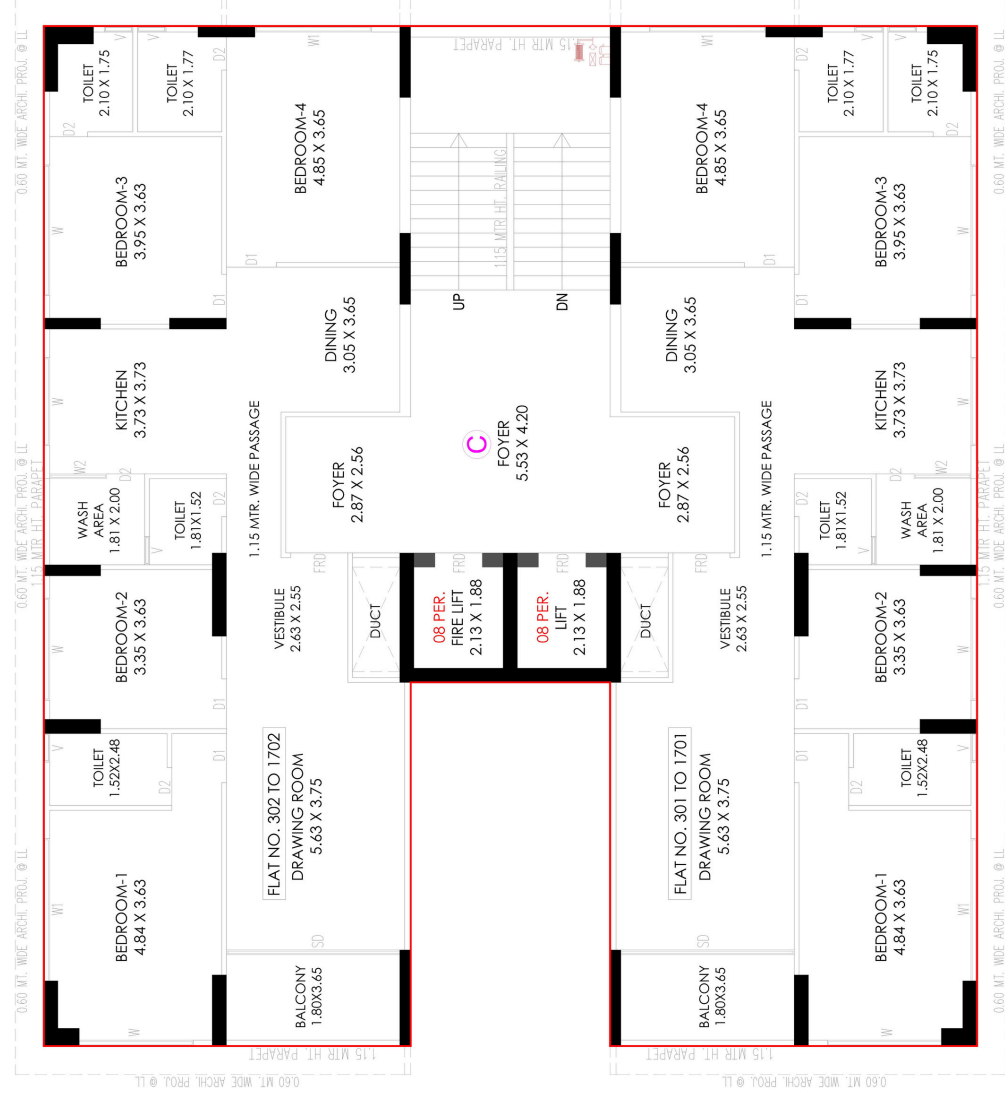
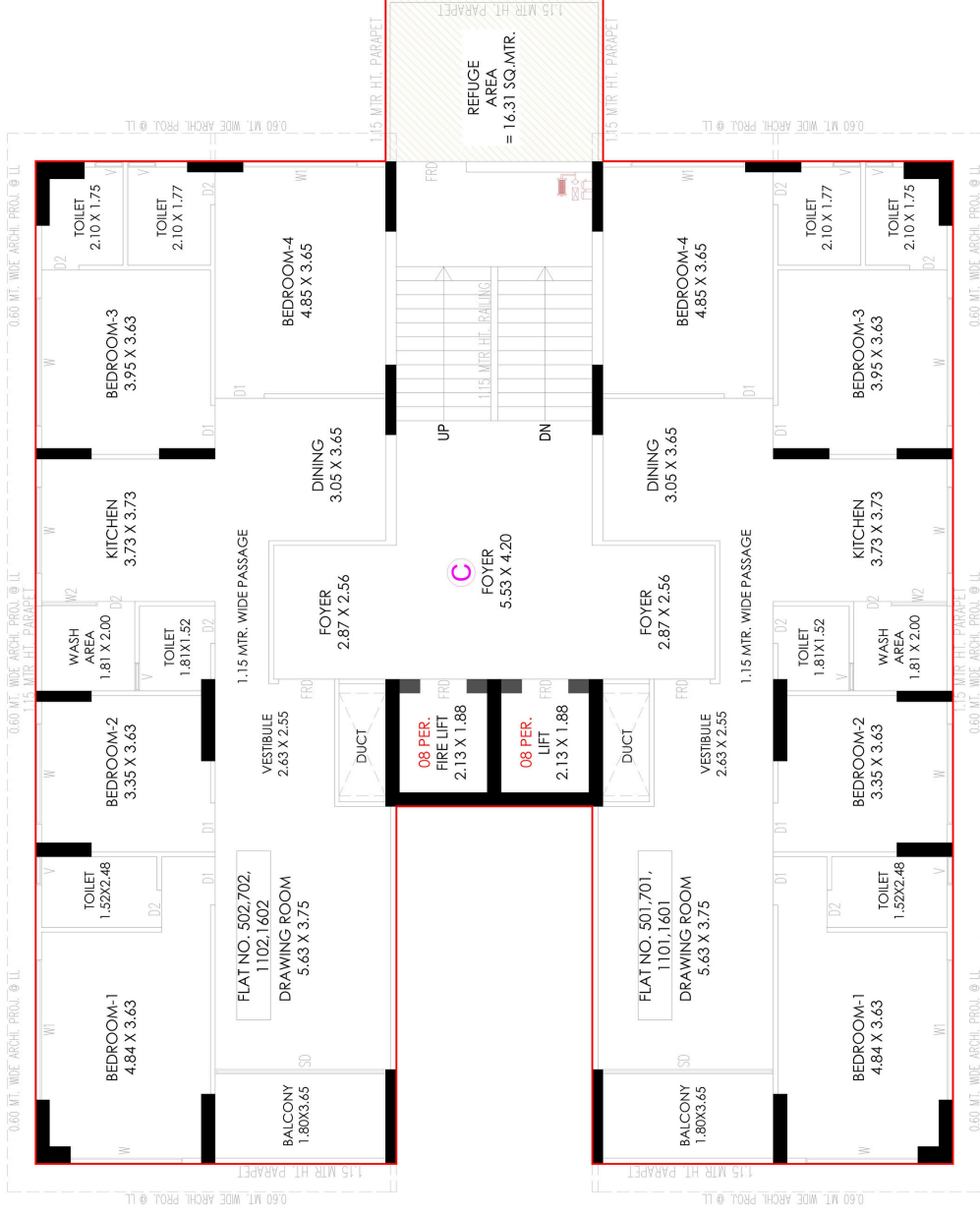
1st FLOOR PLAN ( RESI. )

# BLOCK C 2ND FLOORS



2nd FLOOR PLAN ( RESI. )

# BLOCK C 3RD TO 17TH FLOOR



# BLOCK C 18TH FLOOR & TERRACE

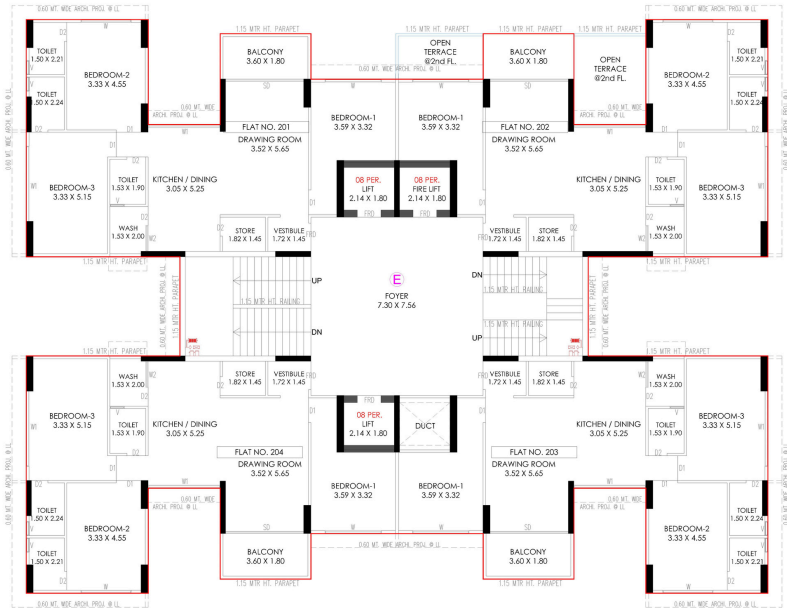


TERRACE PLAN

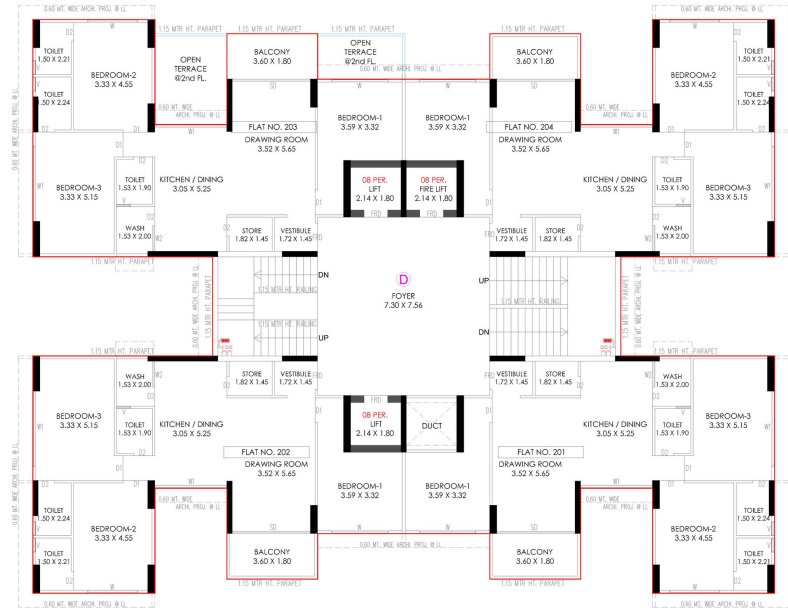


18th FLOOR PLAN ( RESI. )

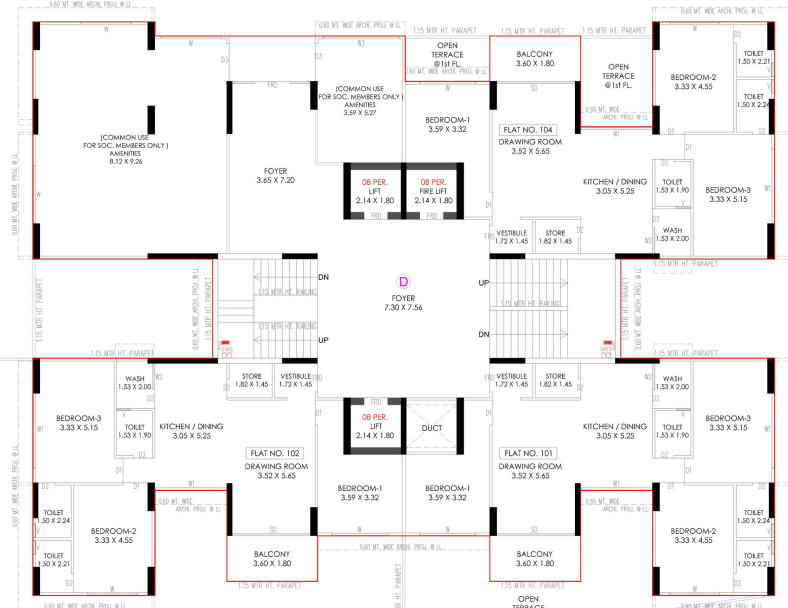
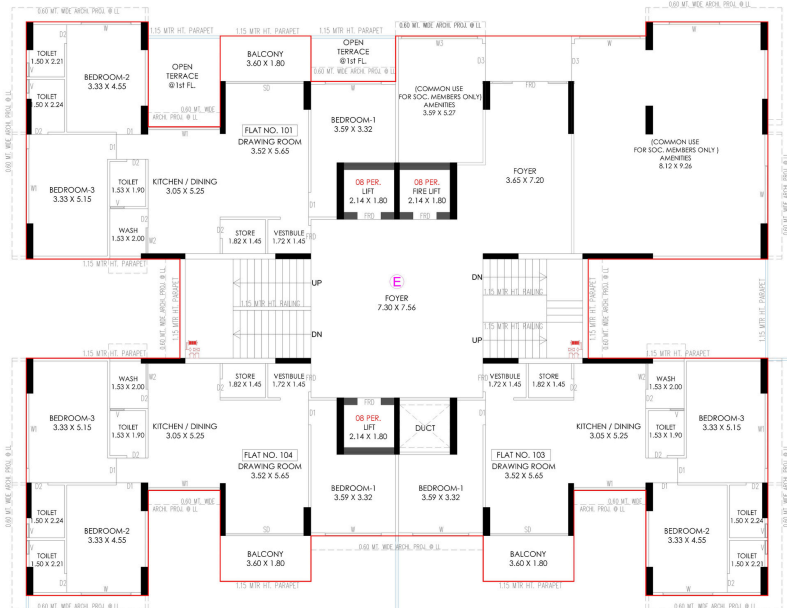
# BLOCK D AND E 1ST & 2ND FLOORS



2nd FLOOR PLAN (RESI.)

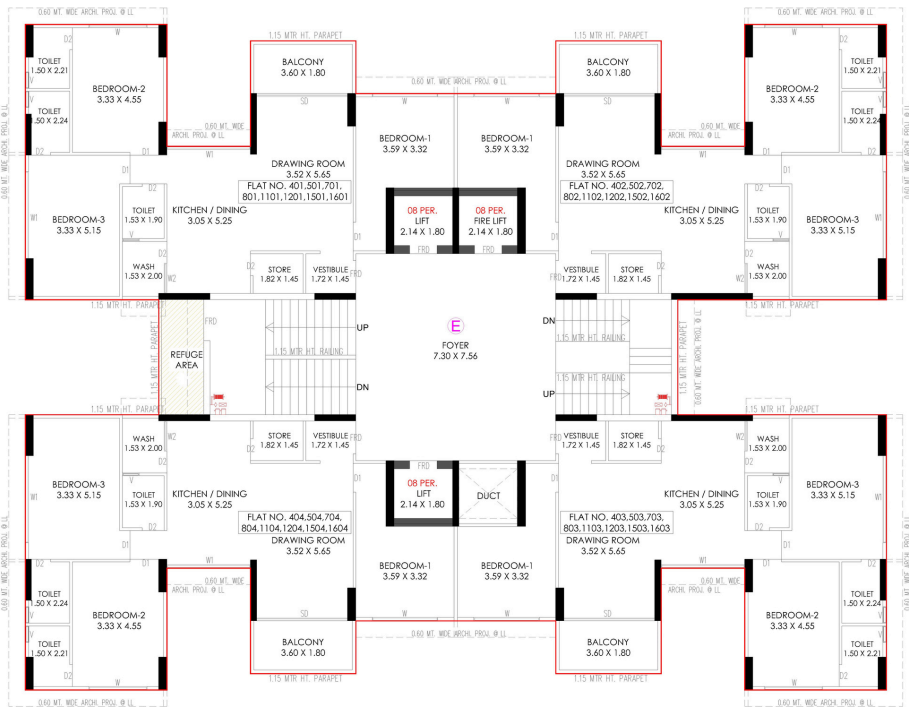


2nd FLOOR PLAN (RESI.)

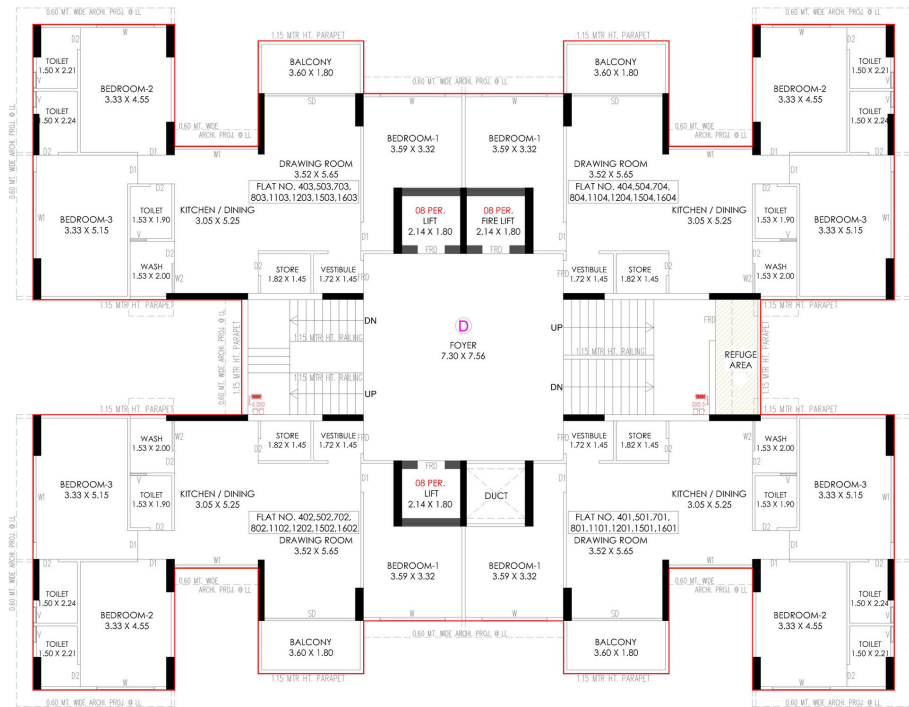


1st FLOOR PLAN (RESI.)

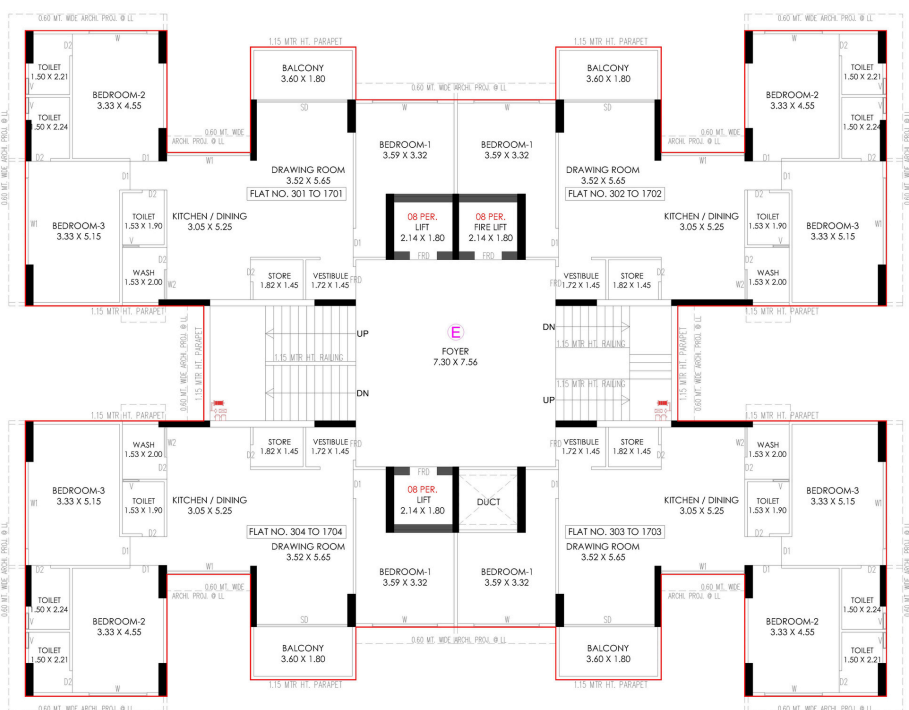
# BLOCK D AND E 3RD TO 17TH FLOOR



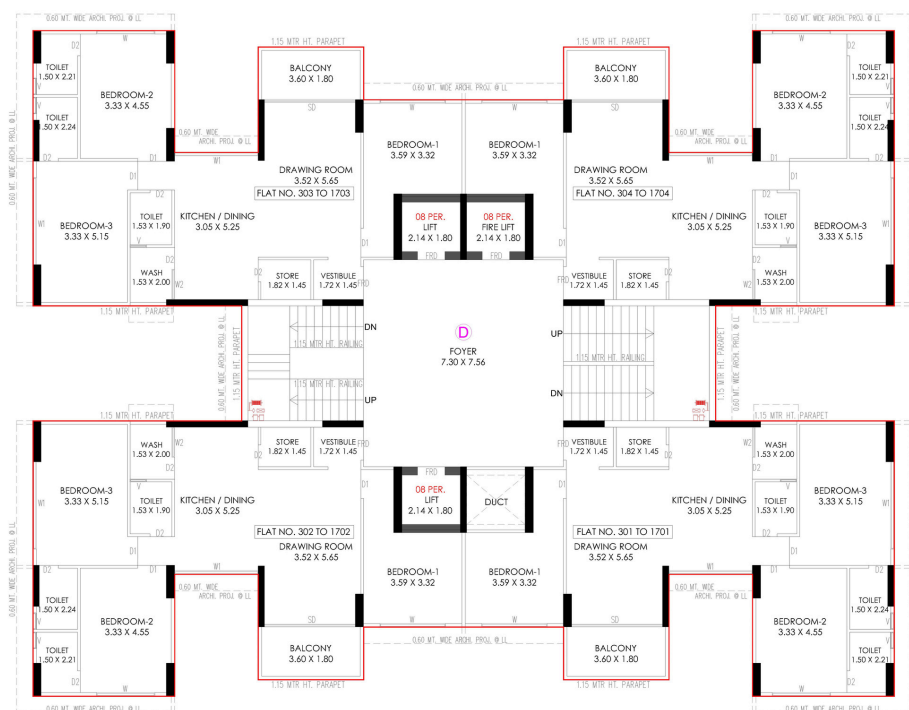
4TH,5TH,7TH,8TH,11TH,12TH,15TH,16TH FLOOR (RESI.)



4TH,5TH,7TH,8TH,11TH,12TH,15TH,16TH FLOOR (RESI.)



3rd,6th,9th,10th,13th,14th & 17th FLOOR PLAN (RESI.)



3rd,6th,9th,10th,13th,14th & 17th FLOOR PLAN (RESI.)



# ---SPECIFICATIONS---

## WALL FINISH

- Internal Smooth Finish Plaster with Double Coat Birla Putty.
- External Plaster or texture with Acrylic Paint.

## DOOR

- Main Door – Main Door with Wooden Frame.

## KITCHEN

- Granite or Vitrified Platform with Stainless Steel Sink Along With Electrical point For Water Purifier.
- Designer Glaze Tile Dado Up to Lintel Level.

## FLOORING

- Vitrified Tile Flooring in Entire Apartment.

## WINDOWS

- Sliding Aluminum Window Section With Anodized or Powder Coated.

## TOILET

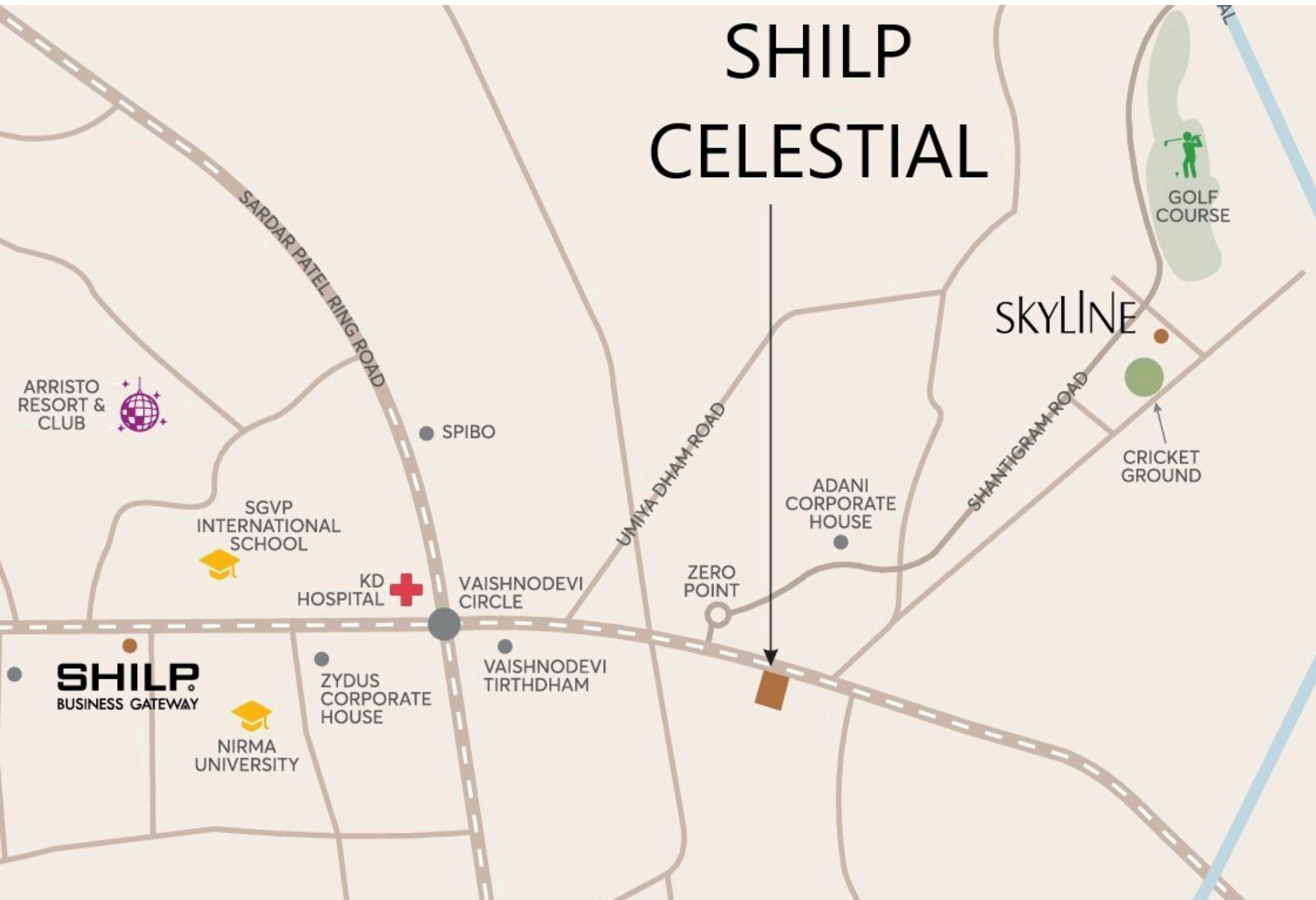
- Ceramic or Glaze Tile Up to Lintel Level.
- CP Fittings – Chrome Plated Branded Bathroom Fittings.

## ELECTRIFICATION

- ISI Modular Switches.
- ISI Wires.
- Distribution Board with MCB for Safety and Protection.

# ---KEY PLAN---

## SHILP CELESTIAL



**SITE ADDRESS: "SHILP CELESTIAL", Opposite Adani Shantigram,  
Nr. Vaishnodevi Circle, Village: Khoraj, Taluka and District: Gandhinagar.**

**Developed By :-  
SHILP INFRAPROJECTS PRIVATE LIMITED**

**SHILP HOUSE  
Beside Rajpath Club, Rajpath Rangoli Road, Bodakdev,  
Ahmedabad - 380054.**

**Contact No :- +91 70696 13123**

**Email :- info@shilp.co.in/sales@shilp.co.in**

**Guj RERA Reg No :- \_\_\_\_\_**

**ARCHITECT – MANSI SHAH**

**STRUCTURE WORK – SETU INFRASTRUCTURE**