

A project by

**THE LAXMI GROUP**  
PASSION FOR EXCELLENCE

Sane Guruji Nagar Marg, Off, Mahatma Gandhi Rd, Next To Police Quarter, Goregaon West, Mumbai, Maharashtra 400062. Mobile : 8657538478

 MaharERA Registration No. : P51800030965 | Also available at <https://maharera.mahaonline.gov.in>

**Laxmi Shrushti Project is Financed by Aditya Birla Housing Finance Ltd.**

The properties have been mortgaged in favour of Aditya Birla Housing Finance Ltd and the buyer will be required to obtain a no-objection certificate prior to entering into any agreement for the sale of any unit in the Project.

Disclaimer: The contents of this brochure/leaflet/pamphlet/Ad including photographs, images, designs, plans, specifications, layout, height, dimensions, facilities, vegetation and communication are merely an artistic impression and imagination and may not have resemblance to actual project on site. The actual and physical features, amenities and facilities in the buildings or the premises would be in accordance with plans and specifications approved by the authorities and the agreement for sale to be executed with the promoter. The intending buyers are advised to examine all disclosures made on the MahaRera website. Area earmarked as Future Development will comprise of multi storeyed buildings subject to approvals and permissions from the concerned authorities. Registered Agreement for Sale between the promoter and the purchaser alone will be final and binding.



**LAXMI**  
**SHRUSHTI**



Stock Image



Artist Impression View

## *Upgrade Your Living In The Most Elite Suburb Of Mumbai - Goregaon*

Goregaon is an upscale neighbourhood in the western suburbs of Mumbai. It is very well connected to most of Mumbai. By investing in a home at Goregaon you get an all-around experience with the most happening lifestyle encounter. Finally get your dream home you were looking for.



**LAXMI**  
**SHRUSHTI**



# A Promising Location That Connects Dream To Reality

Amidst superb road, rail and upcoming metro connectivity with an easy access to all the necessary amenities for a luxurious life, this project is the perfect choice for your dream home.

Laxmi Shrushti is well connected with the supermarkets, hospitals, schools, parks and more to reveal your vicinity.

## Location

### COLLEGES

- Saraf College - S.V. Road Malad (West)
- Dalmia College - Malad (West)
- Patkar College - S.V Road Goregaon (West)
- Sanskardham College - Teen Dongri Goregaon (West)
- Vivek College - Goregaon (West)
- Lords College - Goregaon (West)
- 10+ More Colleges

### SCHOOLS

- Vibgyor School - Goregaon (West)
- St. John's Universal High School
- St. Thomas High School - MG Road
- Bajaj School (Group of School)
- D.G. Khetan Malad (West)
- Witty International School Malad (West)

### RESTAURANT / HOTELS

- Radisson Mumbai - Goregaon (West)
- The Westin Mumbai Garden City - Goregaon (East)
- Ratna Restaurant - Goregaon (West)

### HOSPITALS

- Life Line Medical Hospital - DLH Park S. V Road Goregaon (West)
- Kapadia Nursing Homes - M.G. Road Goregaon (West)
- Dhirubhai Kokilaben Ambani Hospital
- Jain Hospital Goregaon (West)
- 60+ Private Nursing Homes and Hospitals

### MALLS

- Inorbit Mall Link Road Malad (West)
- Infinity Mall Malad (West)
- Hypercity Mall Malad (West)
- Oberoi Mall Goregaon (East)
- City Centre Mall Goregaon (West)
- D-Mart Goregaon (West)

### SPORTS & FITNESS

- Goregaon Sports Club Malad (West)

### HOSPITALS & DIAGNOSTIC

- SRL Diagnostics Malad (West)

# Lifestyle Amenities



This exquisite building complex comes equipped with all imaginable luxurious amenities that make life a delightful experience. It is an exact living place for the professionals of the next generation as it includes all the facilities they want.



*Nana Nani Sitting Area*



*Kids' Play Area*



*Multi-Purpose Court*



*Garden Area*



*Fully Equipped Gym*



*Indoor Games*



*Walking Track*



*Yoga Pavilion*



Artist Impression View



*Podium*

Artist Impression View



*Terrace*

Artist Impression View

# Tower Facility



The exquisite residential tower comes equipped with all imaginable amenities that make life a delightful experience. It is an exact living place for the professionals of the next generation as it includes all the facilities they want.



Double Heighted Entrance Lobby



CCTV Surveillance



Solar Panel



Video Door Phone (VDP) With Intercom Facility From Lobby To Apartment



Lift Upto Terrace Floor



Energy Saving Sensor's Light In All Floor Lobby

# Internal Amenities



- Anodized Aluminium Windows.
- Solid Fire Rated Flush Door Shutter Both Side Laminate Finish For Main Door.
- Vitrified Tile Flooring In Full Flat
- Acrylic/Plastic Paint With Gypsum Finish Walls
- Bathroom Dado Up To Door Height
- Kohler Branded Cp Fittings And Sanitary Ware
- Provision For Water Purifier
- Polished Granite Kitchen Platforms With Stain Less Steel Sink Single Bowl
- Dado Tiles Upto Door Height Above Kitchen Platform

# Typical Floor Plan

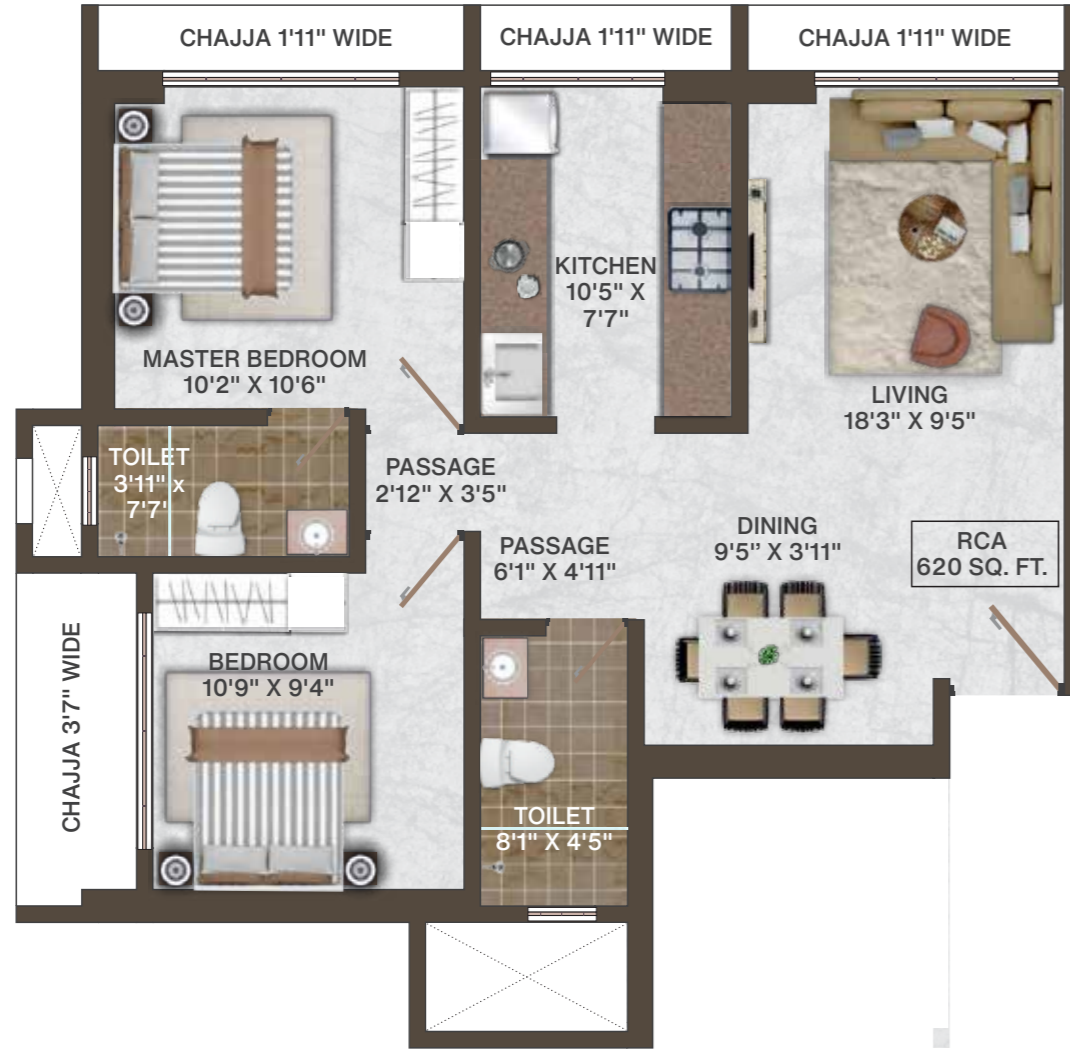


Disclaimer: The plans, designs, and dimensions are as per current sanctioned plans and approvals. Specifications, amenities, and facilities will be as set out in the agreement for sale as uploaded on the RERA website (<https://maharera.mahaonline.gov.in>) under Registration No. P51800030965. The same may be subject to modification/change/revision/alteration in terms of approvals, orders, directions and/or regulations of the concerned/relevant authorities, and/or for compliance with laws/regulations in force from time to time and/or in line with our customer policies. We may modify/alter the above by following due procedure as prescribed under the Real Estate (Regulation and Development) Act, 2016, ("RERA") read with the provisions of the Maharashtra Real Estate (Regulation and Development) (Registration of real estate projects, Registration of real estate agents, rates of interest and disclosures on website) Rules, 2017 and the Rules and Regulations framed under RERA for Maharashtra ("RERA Rules").

# Unit Plan - 1



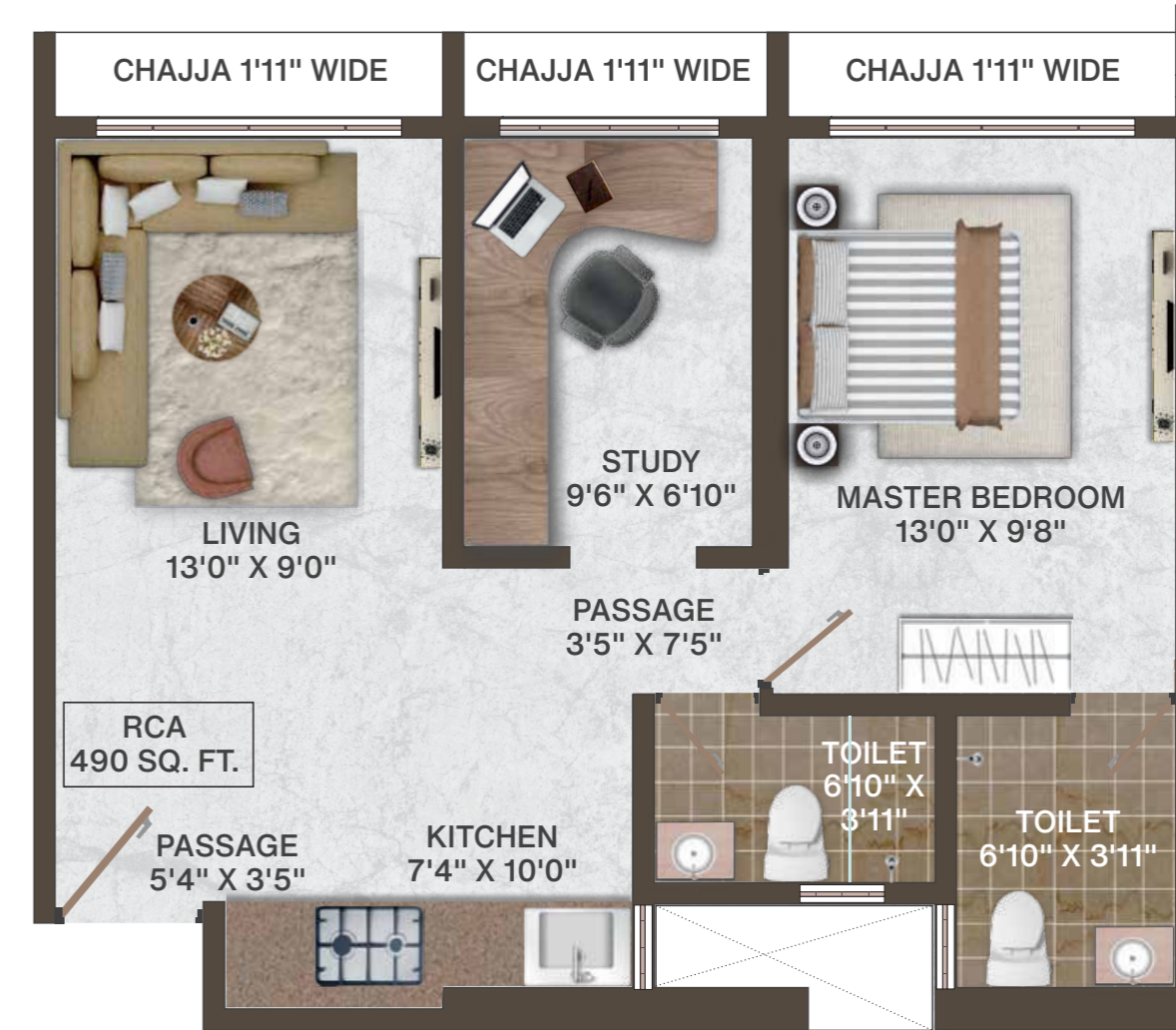
2 BHK - RCA - 620 sq.ft.



# Unit Plan - 2



1.5 BHK - RCA - 490 sq.ft.



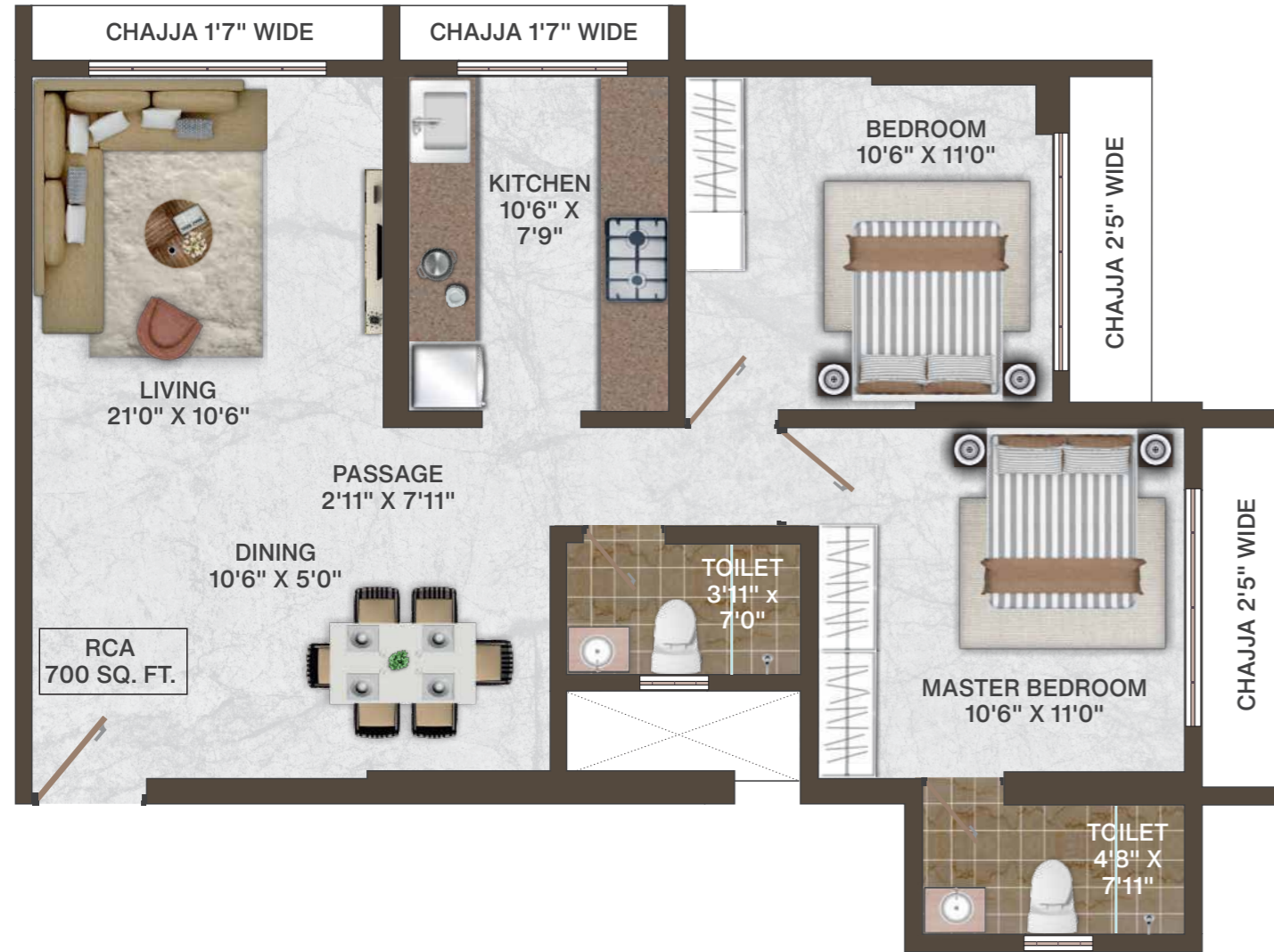
Disclaimer: The plans, designs, and dimensions are as per current sanctioned plans and approvals. Specifications, amenities, and facilities will be as set out in the agreement for sale as uploaded on the RERA website (<https://maharera.mahaonline.gov.in>) under Registration No. P51800030965. The same may be subject to modification/change/revision/alteration in terms of approvals, orders, directions and/or regulations of the concerned/relevant authorities, and/or for compliance with laws/regulations in force from time to time and/or in line with our customer policies. We may modify/alter the above by following due procedure as prescribed under the Real Estate (Regulation and Development) Act, 2016, ("RERA") read with the provisions of the Maharashtra Real Estate (Regulation and Development) (Registration of real estate projects, Registration of real estate agents, rates of interest and disclosures on website) Rules, 2017 and the Rules and Regulations framed under RERA for Maharashtra ("RERA Rules").

Disclaimer: The plans, designs, and dimensions are as per current sanctioned plans and approvals. Specifications, amenities, and facilities will be as set out in the agreement for sale as uploaded on the RERA website (<https://maharera.mahaonline.gov.in>) under Registration No. P51800030965. The same may be subject to modification/change/revision/alteration in terms of approvals, orders, directions and/or regulations of the concerned/relevant authorities, and/or for compliance with laws/regulations in force from time to time and/or in line with our customer policies. We may modify/alter the above by following due procedure as prescribed under the Real Estate (Regulation and Development) Act, 2016, ("RERA") read with the provisions of the Maharashtra Real Estate (Regulation and Development) (Registration of real estate projects, Registration of real estate agents, rates of interest and disclosures on website) Rules, 2017 and the Rules and Regulations framed under RERA for Maharashtra ("RERA Rules").

# Unit Plan - 3



2 BHK - RCA - 700 sq.ft.



# Unit Plan - 4



2 BHK - RCA - 670 sq.ft.



Disclaimer: The plans, designs, and dimensions are as per current sanctioned plans and approvals. Specifications, amenities, and facilities will be as set out in the agreement for sale as uploaded on the RERA website (<https://maharera.mahaonline.gov.in>) under Registration No. P51800030965. The same may be subject to modification/change/revision/alteration in terms of approvals, orders, directions and/or regulations of the concerned/relevant authorities, and/or for compliance with laws/regulations in force from time to time and/or in line with our customer policies. We may modify/alter the above by following due procedure as prescribed under the Real Estate (Regulation and Development) Act, 2016, ("RERA") read with the provisions of the Maharashtra Real Estate (Regulation and Development) (Registration of real estate projects, Registration of real estate agents, rates of interest and disclosures on website) Rules, 2017 and the Rules and Regulations framed under RERA for Maharashtra ("RERA Rules").

Disclaimer: The plans, designs, and dimensions are as per current sanctioned plans and approvals. Specifications, amenities, and facilities will be as set out in the agreement for sale as uploaded on the RERA website (<https://maharera.mahaonline.gov.in>) under Registration No. P51800030965. The same may be subject to modification/change/revision/alteration in terms of approvals, orders, directions and/or regulations of the concerned/relevant authorities, and/or for compliance with laws/regulations in force from time to time and/or in line with our customer policies. We may modify/alter the above by following due procedure as prescribed under the Real Estate (Regulation and Development) Act, 2016, ("RERA") read with the provisions of the Maharashtra Real Estate (Regulation and Development) (Registration of real estate projects, Registration of real estate agents, rates of interest and disclosures on website) Rules, 2017 and the Rules and Regulations framed under RERA for Maharashtra ("RERA Rules").

# Unit Plan - 5



1 BHK - RCA - 435 sq.ft.



# Unit Plan - 6



2 BHK - RCA - 565 sq.ft.



Disclaimer: The plans, designs, and dimensions are as per current sanctioned plans and approvals. Specifications, amenities, and facilities will be as set out in the agreement for sale as uploaded on the RERA website (<https://maharera.mahaonline.gov.in>) under Registration No. P51800030965. The same may be subject to modification/change/revision/alteration in terms of approvals, orders, directions and/or regulations of the concerned/relevant authorities, and/or for compliance with laws/regulations in force from time to time and/or in line with our customer policies. We may modify/alter the above by following due procedure as prescribed under the Real Estate (Regulation and Development) Act, 2016, ("RERA") read with the provisions of the Maharashtra Real Estate (Regulation and Development) (Registration of real estate projects, Registration of real estate agents, rates of interest and disclosures on website) Rules, 2017 and the Rules and Regulations framed under RERA for Maharashtra ("RERA Rules").

Disclaimer: The plans, designs, and dimensions are as per current sanctioned plans and approvals. Specifications, amenities, and facilities will be as set out in the agreement for sale as uploaded on the RERA website (<https://maharera.mahaonline.gov.in>) under Registration No. P51800030965. The same may be subject to modification/change/revision/alteration in terms of approvals, orders, directions and/or regulations of the concerned/relevant authorities, and/or for compliance with laws/regulations in force from time to time and/or in line with our customer policies. We may modify/alter the above by following due procedure as prescribed under the Real Estate (Regulation and Development) Act, 2016, ("RERA") read with the provisions of the Maharashtra Real Estate (Regulation and Development) (Registration of real estate projects, Registration of real estate agents, rates of interest and disclosures on website) Rules, 2017 and the Rules and Regulations framed under RERA for Maharashtra ("RERA Rules").

# THE LAXMI GROUP

PASSION FOR EXCELLENCE

## Passion For Excellence

The Laxmi Group is an emerging real estate company with an established track record of constructing around more than 7,25,000 sq. ft, in a short span. Projects with about 15,00,000 sq. ft. of development area are under various stages of execution and are expected to be delivered over the next 5-7 years.

The group has achieved expertise in the execution of complex redevelopment projects in a timely manner through a deep understanding of laws and meticulous planning, Catering to the needs of all stakeholders Customers. Tenants, Vendors. Employees & Channel Partners who have helped the group create a niche for itself in the dynamic and ever-evolving industry.

## Landmarks Delivered In The Last Decade



CHAMUNDA JEWEL  
Yashwant Nagar, Goregaon(west)



LAXMI CALLISTA  
Jawahar Nagar, Goregaon(west)



SAMARTH SHRUSHTI  
M.G. Road, Goregaon(west)



LAXMI ENCLAVE  
Nadiadwala Colony, Malad(west)



LAXMI VILLA  
Jawahar Nagar, Goregaon(west)



LAXMI HEIGHTS  
Jawahar Nagar, Goregaon(west)

## Other Ongoing Projects

The Laxmi Group has always been efficient with its work with a team of professionals, always imprinting its mark. We are proud to work on a huge number of ongoing large scale projects with the same dedication and efforts and reach up to the expectations of all the customers.



SHANTI HEIGHTS  
Ghoshala Road ( Mulund West )



LAXMI ETERNITY  
Jawahar Nagar ( Goregaon West )



LAXMI SANSKRUTI  
Jawahar Nagar ( Goregaon West )



LAXMI ANNEX  
Jawahar Nagar ( Goregaon West )



LAXMI RAAJILAS  
Mulund Link Road ( Malad West )



## *A Fresh Start For A Family!*

The idea behind Laxmi Shrushti is to gift you and your family a community that will be a part and parcel of your life. Home of a personal haven where one can notch up the highest level of comfort in the best possible way.

Stock Image



Artist Impression