



Welcome to  
Life Beyond Limits

**BEYOND  
iNFiNiTY**

**Futuristic Living**  
NH47, Kalamassery, Kochi

BEYOND  
iNFiNiTY  
Futuristic Living  
NH47, Kalamassery, Kochi

# Glimpse of the Future in Every Angle

---

Welcome to Beyond Infinity – a bold vision of tomorrow’s living, where intelligent design, seamless technology, and elevated comfort come together.

**Featuring 2, 3 & 4 BHK apartments in Kalamassery, Kochi,**  
crafted for those who choose to live ahead of their time.



CASADEL

CASADEL

Beyond  
Infinity

Disclaimer: Photos are for representation only and might defer during actual implementation.



# A world of infinite possibilities

---

Every detail at Beyond Infinity is powered by smart technology—designed to simplify life, enhance comfort, and give you seamless control over your home, no matter where you are.



A gateway to a life  
beyond the ordinary

---



**CASADEL**  
*Beyond Infinity*

# Effortless elegance, powered by smart living

---

Beyond Infinity introduces a world of smart features and thoughtful amenities, designed to make your day-to-day life more convenient and connected.



**Smart Digital Access:** Secure entry with biometric systems for each individual apartment.



**Smart Visitor Management:** Effortlessly manage guest entry for visitor access.



**Smart Parking Management:** Enjoy easy access to residential parking with a digitally controlled parking boom gate.



**Smart Gas Safety :** Manage your gas system remotely with Smart Gas-Sensors



**Smart AC Control:** Remotely manage your air conditioning system (ON/OFF) via your mobile device for ultimate comfort.



**Smart Lighting Control:** Turn lights on and off remotely using your mobile, offering convenience and energy efficiency.



**Access Controlled Lifts:** Maintain security and convenience with lifts that provide restricted access to each floor.

Uncover a lifestyle  
layered with thoughtful  
luxuries

---



Where every dive feels like a getaway **Swimming Pool & Kid's Pool**



Host under the stars, celebrate by the pool **Pool side deck party area**



Experience Fitness in the Fast Lane **Air conditioned gym**



Stay cool while the games heat up **Air conditioned indoor gaming area**



## Grill, Chill, Connect

BBQ Area



## A Space To Learn & Grow

Children's play area



## Your rooftop retreat, the smarter way

Terrace garden with drip irrigation

## Walk Into Wellness

Reflexology path



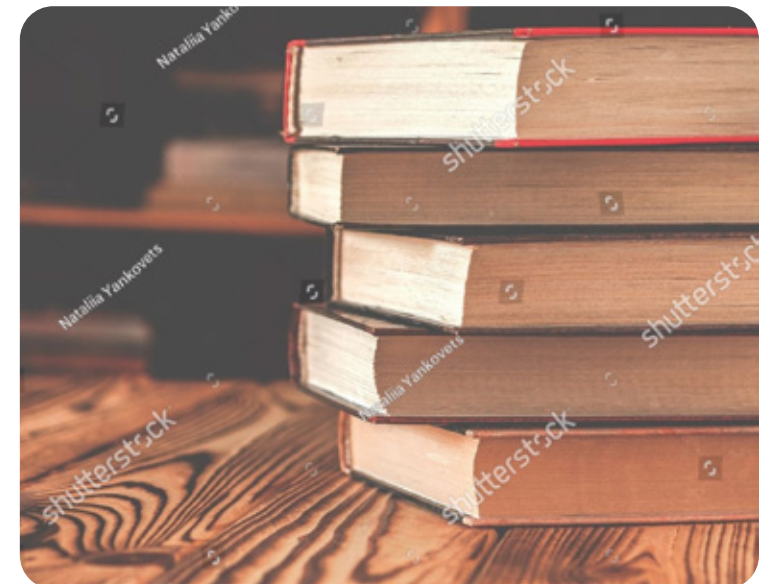
## For Your Modern, Balanced Life

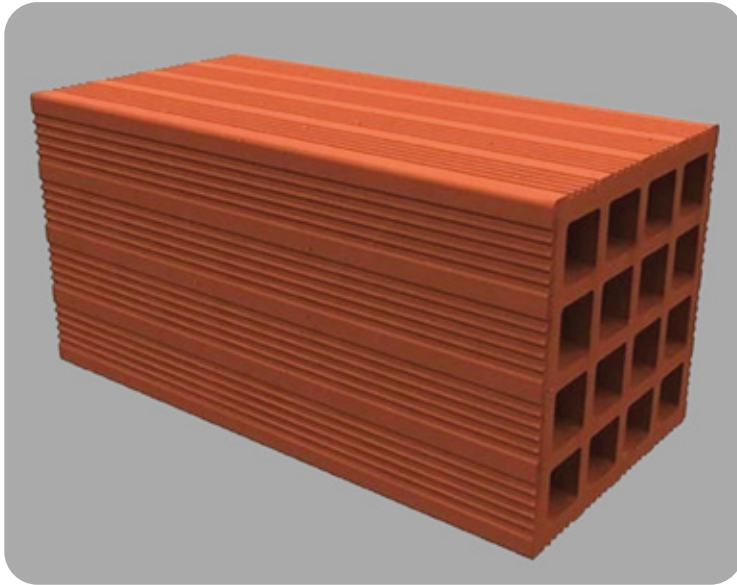
Meditation/yoga lawn



## A Quiet Space To Think

Mini library





## Bricks That Cool. And Conserve.

---

Porotherm bricks



## Convenience with Complete Safety.

---

Piped gas



## Security at Its Smartest

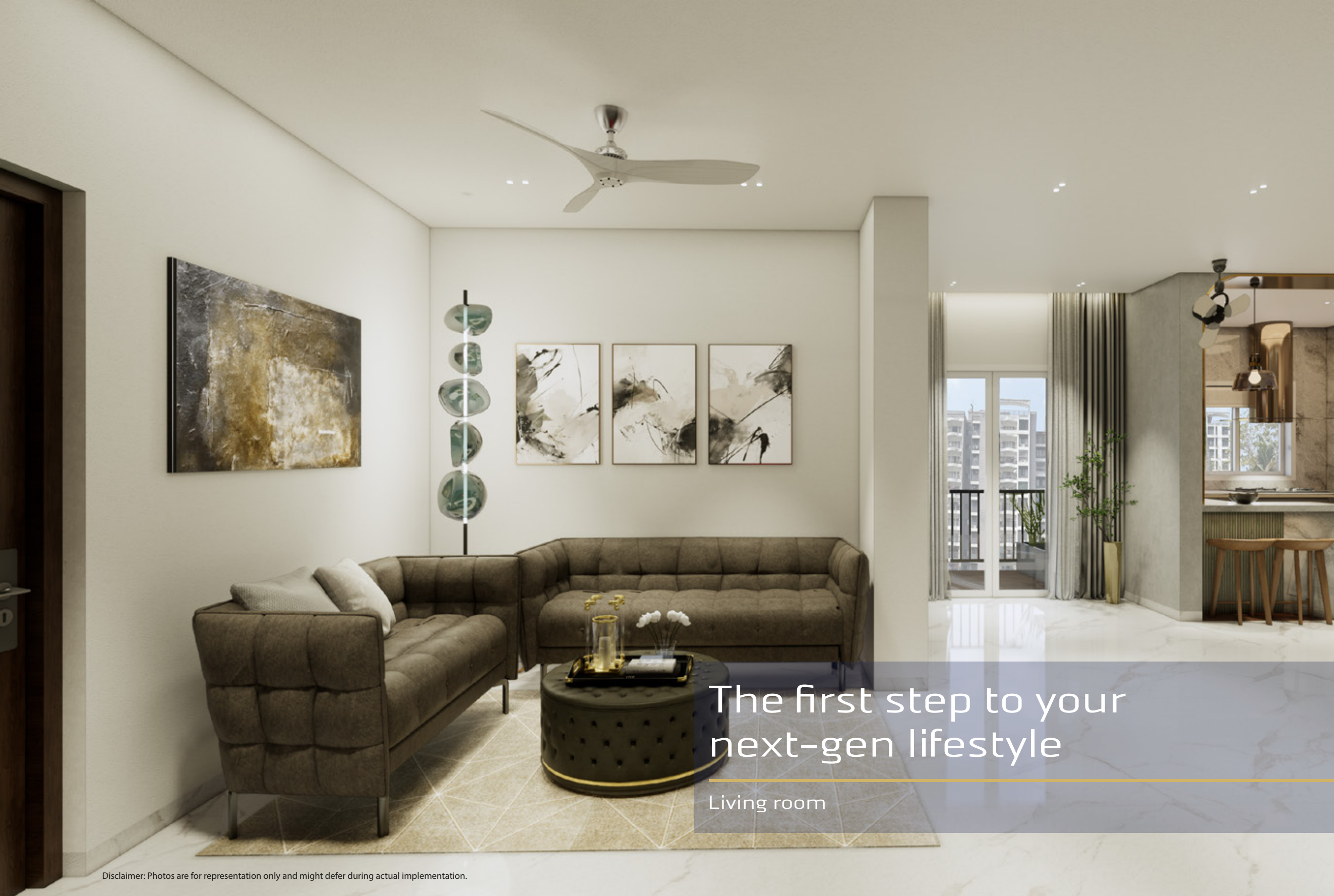
---

Camera surveillance

Happiness  
in Every  
Corner

---





The first step to your  
next-gen lifestyle

Living room



Tailored to every  
meal-by you

Dining



# Rest, Just the Way You Like It

Bedroom



A kitchen that inspires  
more than just meals

Kitchen

# A Bold Structure for Tomorrow's Way of Life

---



CASABEL

CASABEL

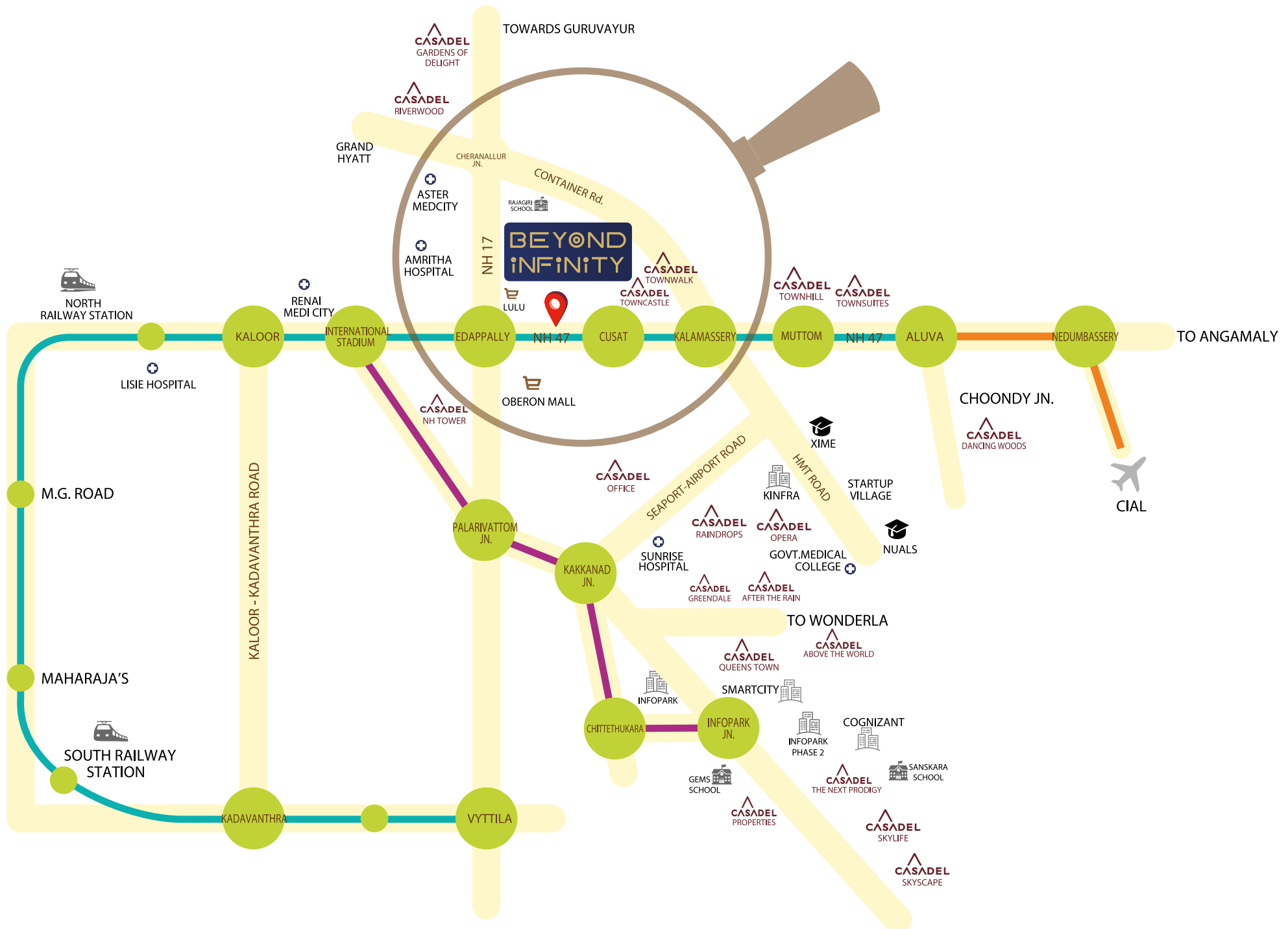
Beyond  
Infinity

Disclaimer: Photos are for representation only and might defer during actual implementation.

# Right Where The Future Is Headed

One of the most notable features of this project is its exceptional location. Positioned in the vibrant center of Kochi's burgeoning metropolis in Kalamassery, Casadel Beyond Infinity offers the convenience of city living without the need for excessive commuting. Being located on the National Highway and the CUSAT Metro station just 300 meters away, Beyond Infinity provides seamless connectivity to essential amenities such as shopping malls, cinemas, hospitals, educational institutions, hotels, and more, ensuring a convenient and stress-free urban lifestyle. Experience the serenity of the nearby Muttar River View Point, located just a short 200 meters away, and indulge in its refreshing panoramic scenery.

	Kms	Time
<b>CONNECTIVITY</b>		
NH 47	0 Mtrs	1 Min
Bus Stop	50 Mtrs	1 Min
CUSAT Metro Station	300 Mtrs	1 Min
Aluva Railway Station	8.0 Kms	16 Mins
Ernakulam Town Railway Station	8.0 Kms	11 Mins (MRT)
Kalamassery Railway Station	3.5 Kms	6 Mins
Cochin Airport	19 Kms	30 Mins
<b>EDUCATIONAL INSTITUTIONS</b>		
SCMS	3.0 Kms	5 Mins
Rajagiri School	1.5 Kms	5 Mins
Najath Public School	50 Kms	2 Mins
CUSAT	500 Mtrs	2 Mins
NUALS	6.0 Kms	12 Mins
Model Engineering College	3.5 Kms	8 Mins
Bharat Mata College	3.6 Kms	9 Mins
Naipunya Public School	3.6 Kms	9 Mins
Amrita Medical College	5.0 Kms	15 Mins
IIM Campus (Upcoming)	400 Mtrs	2 Mins
<b>HEALTH CARE</b>		
Kinder Hospital	600 Kms	2 Mins
Medical College Kochi	5.0 Kms	10 Mins
Renai Medicity	4.5 Kms	10 Mins
Kottakkal Arya Vaidyashala	4.4 Kms	10 Mins
Sunrise Hospital	5.0 Kms	12 Mins
Amrita Medical College	5.0 Kms	12 Mins
Aster Medicity	7.5 Kms	15 Mins
<b>SHOPPING &amp; BUSINESS ZONE</b>		
Lulu Mall	2.0 Kms	5 Mins
Grand Mall	2.2 Kms	5 Mins
Oberon Mall	3.7 Kms	9 Mins
Decathlon	3.5 Kms	9 Mins
KINFRA	5.4 Kms	11 Mins
Startup Village	5.5 Kms	12 Mins
Infopark & Smartcity	8.5 Kms	18 Mins



- ROAD
- METRO PHASE 1
- METRO PHASE 2
- METRO PHASE 3
- METRO STATION

# FLOOR PLANS

---

# TYPICAL FLOOR PLAN

**UNIT-B 3 BHK**  
1360 sqft

**UNIT-C 2 BHK**  
1150 sqft



**UNIT-A 4 BHK**  
1972 sqft

**UNIT-D 2 BHK**  
1150 sqft

## Floor Plan A

4BHK

Saleable Area -1972Sft

Area as per RERA -1382Sft



## Floor Plan B

3BHK

Saleable Area -1360Sft

Area as per RERA -937Sft





## Floor Plan C

2BHK

Saleable Area -1150Sft

Area as per RERA -796Sft

## Floor Plan D

2BHK

Saleable Area -1150Sft

Area as per RERA -796Sft



# SPECIFICATION

---

### Structure

Porotherm Bricks used for external walls. RCC framed structure with block partitions & designed for seismic consideration. Concrete grade and steel grade as per structural consultants' advice.



### Bathrooms

The bathroom is furnished with high-end sanitary fixtures, concealed piping, and premium quality fittings. The products of prominent sanitary fitting brands like Kerovit, Jaguar or equivalent.



### Flooring

The entrance lobby will be adorned with a combination of exquisite and high quality tiles. Rooms and Kitchen will have 80 x 80 high quality tiles.



### Electrification and Cabling

The electrification and cabling system follows three phase power supply with concealed copper wiring and ISI approved PVC conduits. Adequate provisions for light, fan, and power points are installed with modular switches of approved brands like Legrand or equivalent and recontrolled by DBs, ELCB and MCBs. The rooms are furnished with facilities using wires and switches of trusted brands like V-Guard, Legrand or equivalent. The piping is enabled by products of brands like Supreme, Finolex or equivalent.

### Finishes

Internal Walls: Putty and Plastic Emulsion for internal walls and ceiling.

External Walls: Weather shield paint finish for exteriors.

Paint: Berger/Asian or equivalent.



### Doors and Windows

High quality internal and external doors are used. The bathrooms sport prime-quality fiber doors and the windows are UPVC or Powder coated High Quality Aluminum Windows.



Legacy rooted in vision.  
Built for the future.

---



Casadel has always looked beyond blueprints. With over a decade of crafting landmark homes, we bring together precision, trust, and an obsession for innovation. Beyond Infinity is the result of everything we've learnt—and everything we imagine.

# Awards & Events



QueensTown launch by Cine actress, Ms.Mareena Michael Kurisingal



Business Excellence Award from Mr. Kochouseph Chittilappilly, Mr. V. P. Nandakumar and Mr. Joy Alukkas



Innovative Builder Award from J. Chinchu Rani, Honourable Minister of Kerala State



TownWalk Launch by Mahir Al Nooman (Alshamsi Group) @ UAE



Casadel Foundation Launch by PC Musthafa (ID foods) @ Grand Hyatt



TownWalk Pre-launch by Mr. Shaan Rahman, Music Director



TownSuites Launch by Shri Antony Raju, Transport Minister of Kerala



Brand Leadership Awards - 2019 13<sup>th</sup> Regional Employer Branding Awards

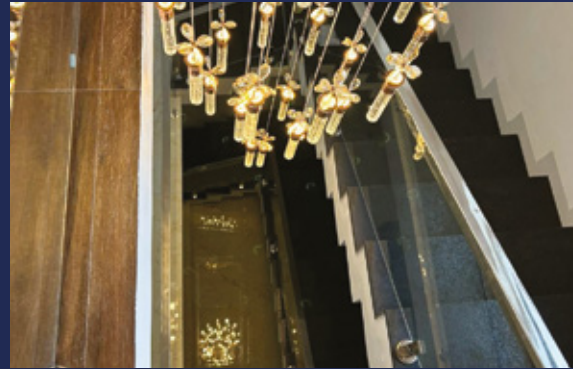
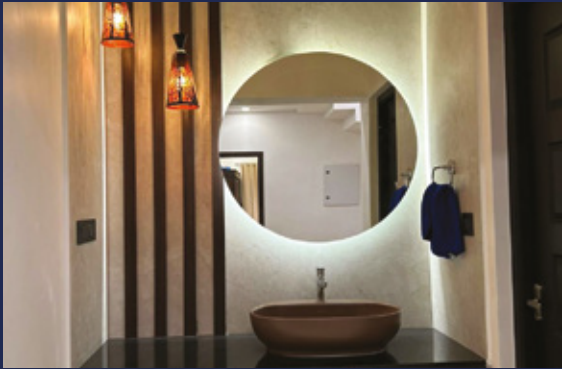


Dancing Woods Project Launch by Mr. Shamim Rafeek, Corporate Trainer



Beyond Infinity launched by Ali Al Ameemi, CEO & Chairman of Wefly7 Aviation, at Hotel Movenpick, Dubai."

# Actual Photos



# Our Projects



THE NEXT PRODIGY - KAKKANAD



SKYSCAPE - INFOPARK, KAKKANAD



ABOVE THE WORLD - KAKKANAD



RAINDROPS - KAKKANAD



TOWNWALK - KALAMASSERY



RIVERWOOD - EDAPPALLY



GREENDALE - KAKKANAD



GARDENS OF DELIGHT - EDAPPALLY



TOWNSUITS - KALAMASSERY



TOWNCASTLE - EDAPPALLY



SKYLIFE - INFOPARK, KAKKANAD



TOWNHILL - KALAMASSERY



AFTER THE RAIN - KAKKANAD



DANCING WOODS - ALUVA



OPERA - KALAMASSERY



QUEENSTOWN - KAKKANAD



[sales@casadel.com](mailto:sales@casadel.com)



+91 8089 003 003  
+91 8089 004 004

[www.casadel.com](http://www.casadel.com)  
[www.facebook.com/casadeldevelopers](https://www.facebook.com/casadeldevelopers)

Casadel Builders India Pvt. Ltd.  
6/838 B-2, Seaport Airport Road,  
Vallathol Junction, Thrikkakara P.O.,  
Kochi 682021