

RERA No.: PRM/KA/RERA/1251/310/PR/100125/007376

EXPAND YOUR LIFE CHANGE YOUR WORLD

Live in nature elation world

Thoughtfully Designed Spaces Located @ Varthur, Bengaluru.



STSK Builders & Developers

**NATURE
ELATION**
LIVE IN NATURE

The logo graphic for 'NATURE ELATION' features the word 'ELATION' in a large, bold, black, sans-serif font. A green globe is integrated into the letter 'O'. Above the globe is a stylized red and orange bird in flight. Below the word 'ELATION', the phrase 'LIVE IN NATURE' is written in a smaller, black, sans-serif font.



Where Modern Comforts Meet Nature’s Embrace

At Nature Elation Apartments, we've created more than just a place to live – we've crafted an experience where the wonders of nature seamlessly blend with the comforts of modern living. This is a community for those who value a life of balance, surrounded by the beauty of nature, and enhanced by thoughtfully designed spaces.

Imagine waking up to the soothing sounds of birds, taking a stroll in lush green gardens, and breathing in the fresh, crisp air every morning. At Nature Elation, you'll find that connection to nature is more than just a promise; it's a way of life. Experience the serenity and peace that only a home surrounded by greenery can provide.

Project Configuration

Site Area 1 Acre 11 Gunts	Structure Basement + G + 4 Floors	No of Block 2 (A & B)	Type of Units 2 & 3 BHK Flats	No of Units 123 Flats
2 BHK Range from 1007 Sft. to 1179 Sft.	3 BHK Range from 1198 Sft. to 1533 Sft.	No Common Walls	No Deviation	As per Vaastu

A GREEN HAVEN AWAITS YOU

CC & OC
Project

Basement +
G + 4 Floors



Experience Life Amidst Lush Greenery,
Without Leaving the City

LIVE THE NATURE

Imagine waking up every morning to the gentle rustle of leaves, the fresh aroma of blooming flowers, and the peaceful sounds of nature—all without sacrificing the convenience of urban living. At Nature Elation Apartments, you are surrounded by lush greenery that creates a serene oasis right in the heart of the city.

NATURE
ELATION
LIVE IN NATURE





MORE SPACE FOR A
PERSPECTIVE

A Modern Sanctuary Inspired by Nature.”

Nature Elation Apartments offers a unique living experience, seamlessly blending modern architecture with the lush beauty of the outdoors. Every detail is inspired by nature—large windows that let in ample natural light, expansive green spaces for relaxation, and sustainable materials that enhance both comfort and style. This is not just a residence; it's a sanctuary, carefully crafted to give you a peaceful retreat amid the hustle and bustle of the city.

**NATURE
 ELATION**
 LIVE IN NATURE



Project Highlights

- ◆ Entrance Arch
- ◆ As per Vaastu
- ◆ No Common Walls
- ◆ Quality Construction
- ◆ Excellent Ventilation
- ◆ Prime Location
- ◆ 24X7 Security
- ◆ CCTV Surveillance
- ◆ Branded Lifts
- ◆ Water Harvesting
- ◆ 100% Power Backup
- ◆ Sewage Treatment Plant (STP)
- ◆ Car Parking
- ◆ Wide Drive Ways

**NATURE
ELATION**
LIVE IN NATURE



7 Compelling Reasons to Live in Nature Elation Apartments



- 1 Speed delivery
- 2 Lush green spaces
- 3 Gated community
- 4 Eco-friendly living
- 5 Prime location with excellent connectivity
- 6 Thoughtful living spaces
- 7 Premium amenities

An Urban Retreat,
Surrounded by Green Spaces

Master Plan &
Ground Floor Plan



MORE SPACE FOR EVERY




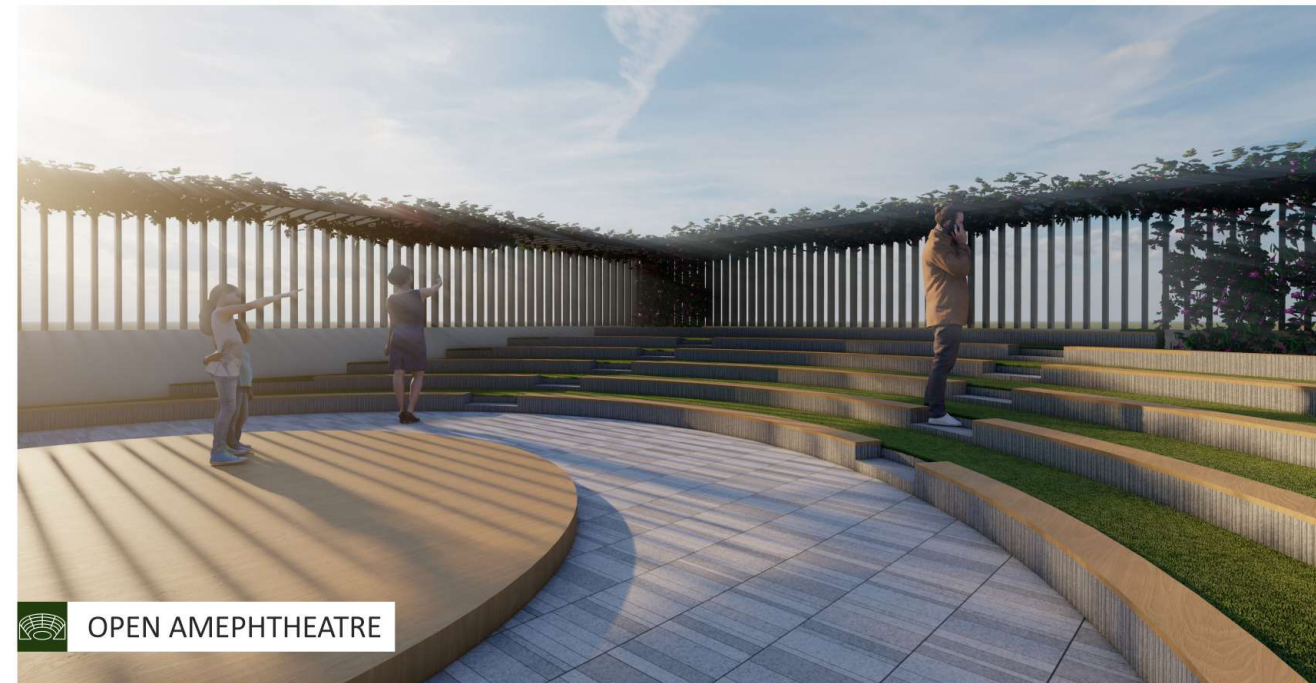
LEGEND

- 01 || Grand Entrance
- 02 || Driveway to Cellar
- 03 || Circular Pergola - 1
- 04 || Senior Citizen Sit-Out Area
- 05 || Jogging Track
- 06 || Badminton Court
- 07 || Circular Pergola - 2
- 08 || Children's Play Area
- 09 || Out Door Gym
- 10 || Cricket Practice Net
- 11 || Skating Rink
- 12 || Circular Pergola - 3
- 13 || Half Basketball Court
- 14 || Driveway from Cellar





 PARTY HALL



 OPEN AMEPHTHEATRE

Terrace Amenities

- ◆ Party Hall
- ◆ Swimming Pool
- ◆ Open Amphitheatre
- ◆ Open Air Lounge
- ◆ Yoga Pavilion

Discover World-Class Luxury Amenities

the outdoors is an extension of your living space, designed to refresh, invigorate, and bring you closer to nature. Here, every morning starts with a breath of crisp, fresh air, enveloped by lush greenery and thoughtfully curated landscapes.




 SWIMMING POOL

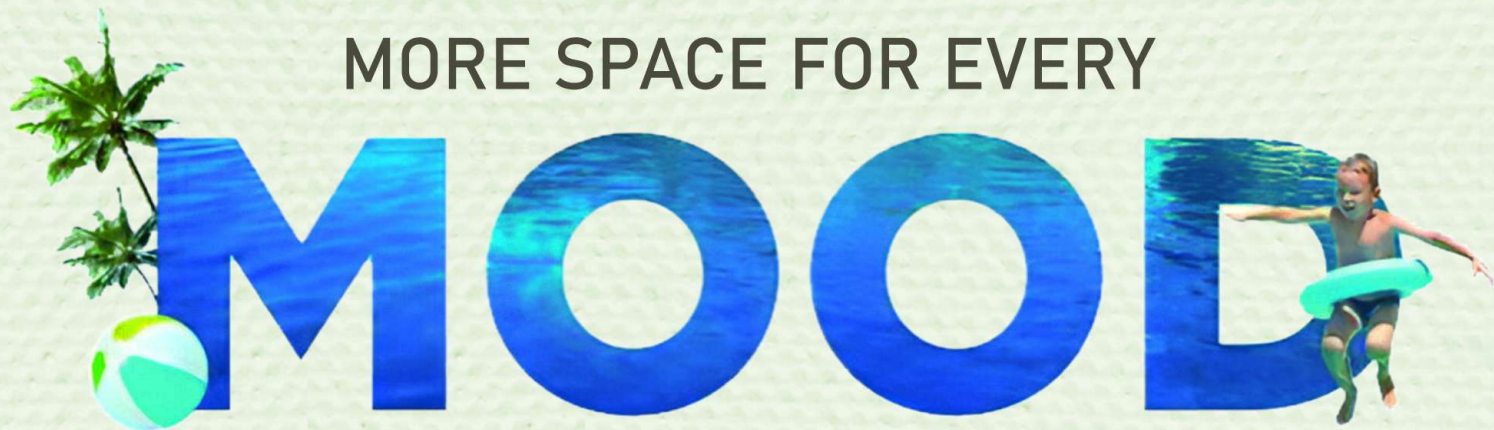


 OPEN AIR LOUNGE



 YOGA PAVILION

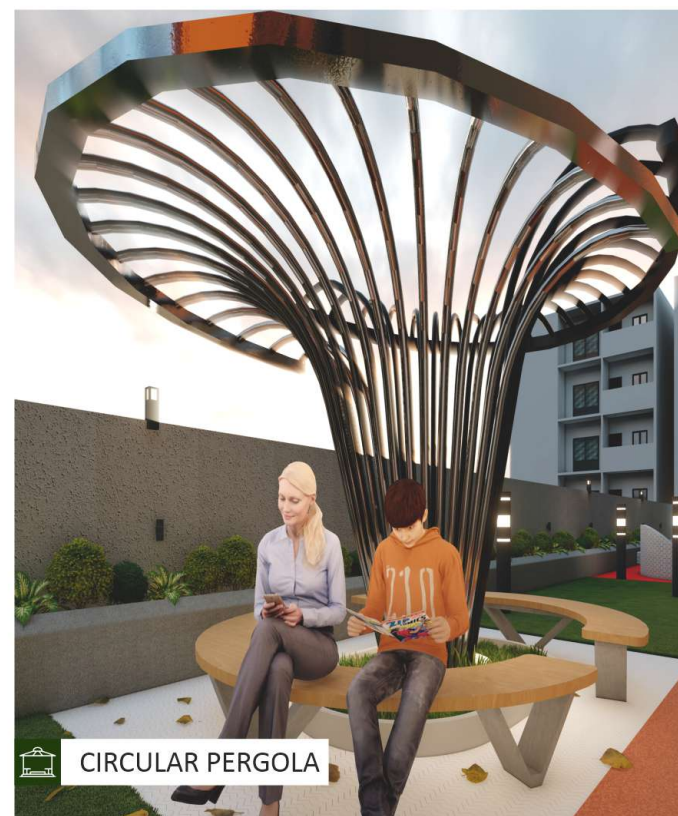
MORE SPACE FOR EVERY



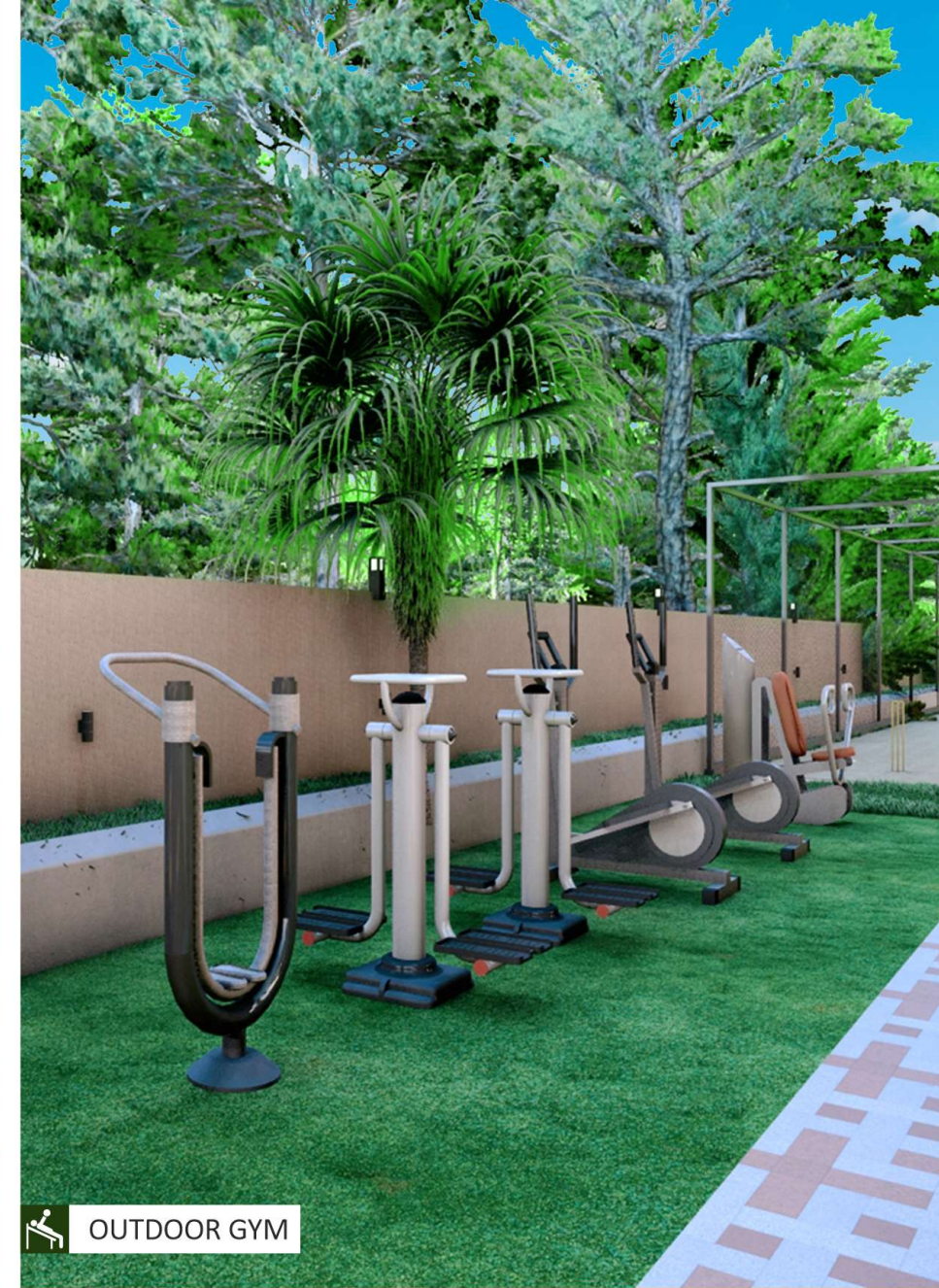
NATURE
ELATION
LIVE IN NATURE



KIDS PLAY AREA



CIRCULAR PERGOLA



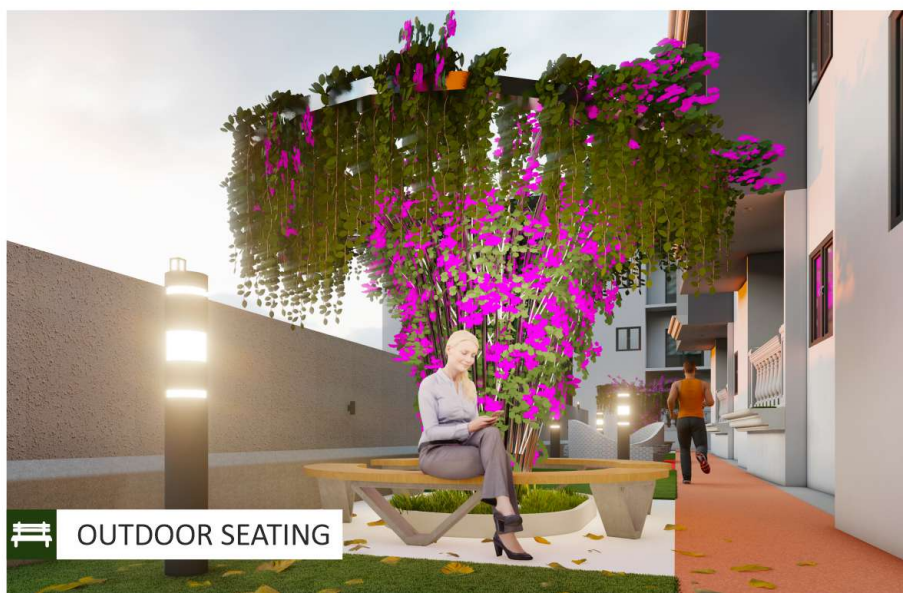
OUTDOOR GYM



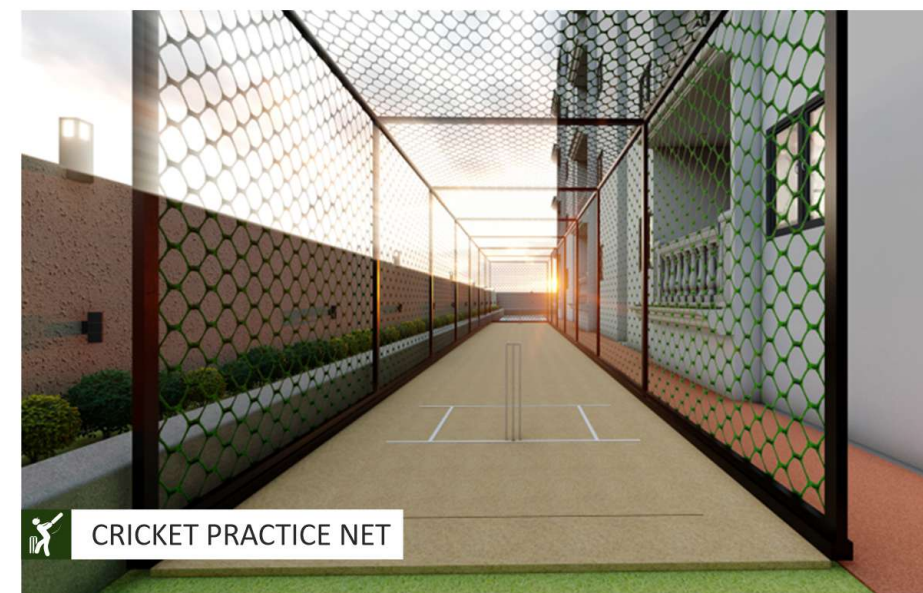
HALF BASKETBALL COURT



BADMINTON COURT



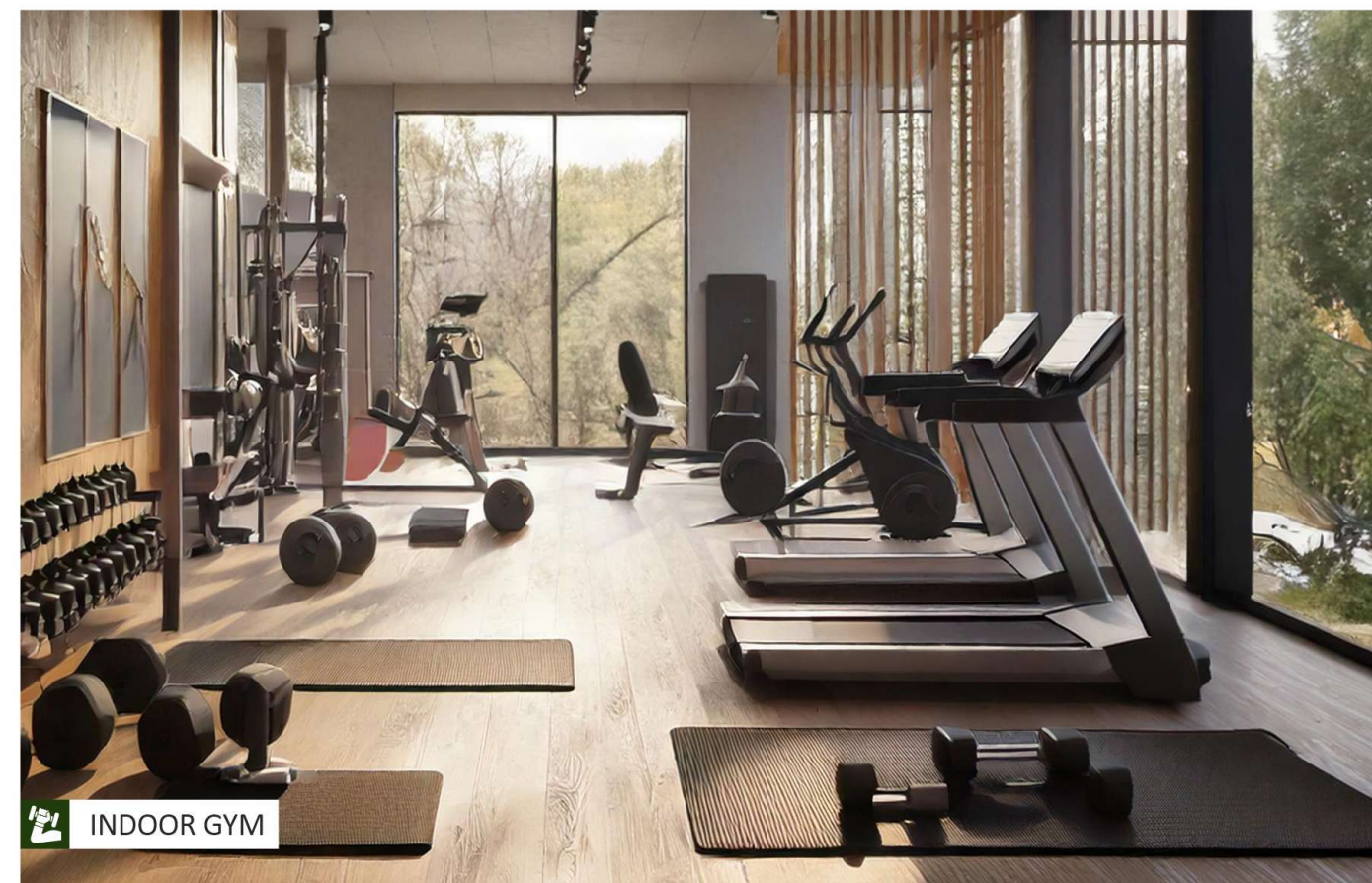
OUTDOOR SEATING



CRICKET PRACTICE NET

Ground Floor Amenities

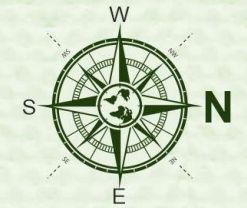
- ❖ Basketball Court
- ❖ Shuttle Court
- ❖ Indoor Games
- ❖ Indoor Gym
- ❖ Play Area
- ❖ Cricket Net
- ❖ Skating Rink
- ❖ Circular Pergola
- ❖ Senior Citizen Sit Out
- ❖ Gardens
- ❖ Jogging Track
- ❖ Out Door Gym



INDOOR GYM

MORE SPACE FOR INNOCENT
SMILES

Designed for Those Who Seek
the Best of Both Worlds



TYPICAL FLOOR PLAN - AREA STATEMENT IN SFT.

BLOCK - A

F.No.	Type	Facing	Plinth Area	Common Area	SBA
01	2 BHK	West	901	252	1153
02	2 BHK	West	901	252	1153
03	2 BHK	West	921	258	1179
04	3 BHK	East	1061	297	1358
05	3 BHK	East	1061	297	1358
06	3 BHK	East	1116	312	1428
07	3 BHK	East	1064	298	1362

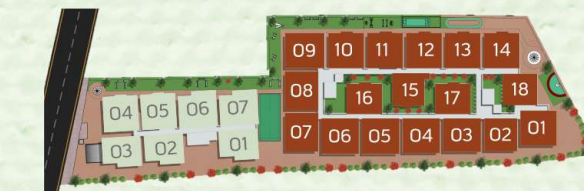


NATURE ELATION

LIVE IN NATURE

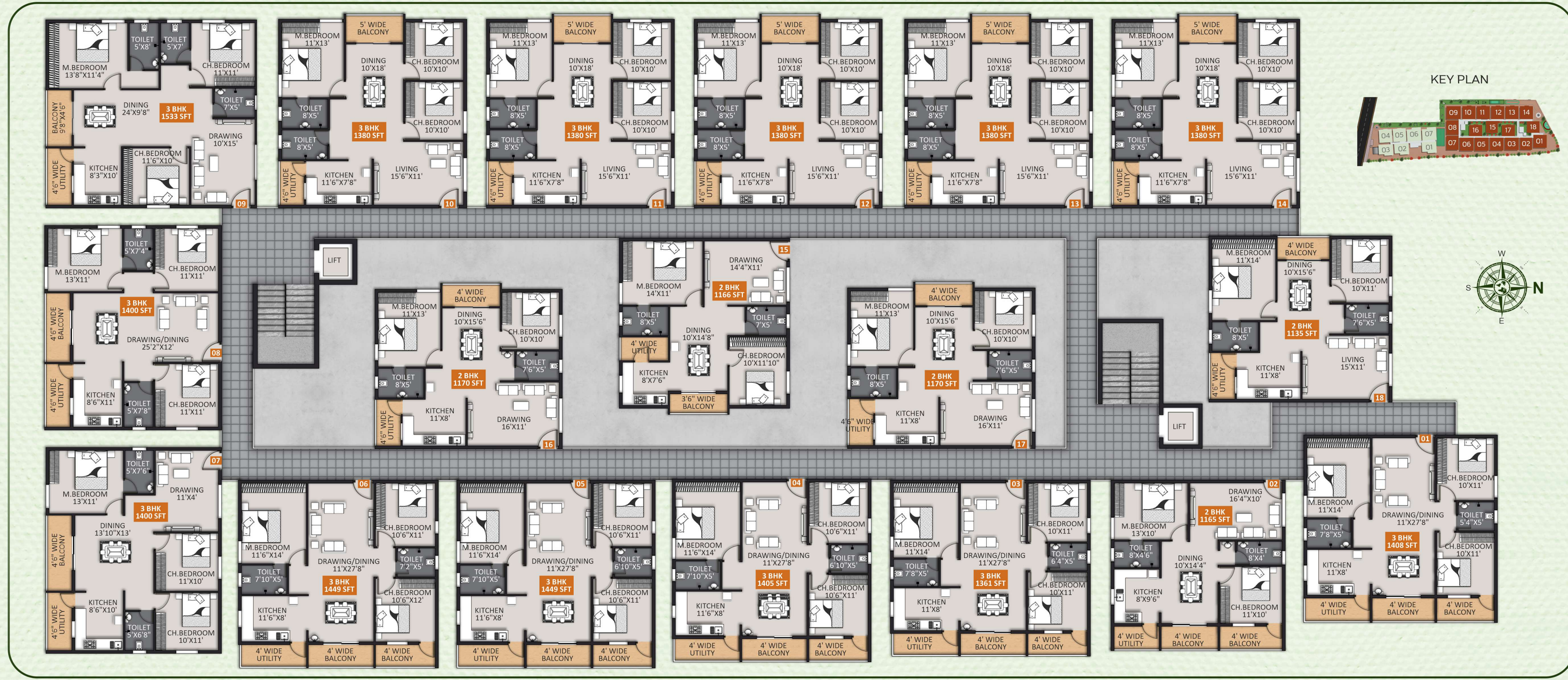
Nature Elation Apartments are not just homes; they are sanctuaries designed to offer a refreshing change from the hustle and bustle of everyday life. Here, you will discover a space that nurtures your well-being, encourages relaxation, and fosters a connection with nature.

KEY PLAN



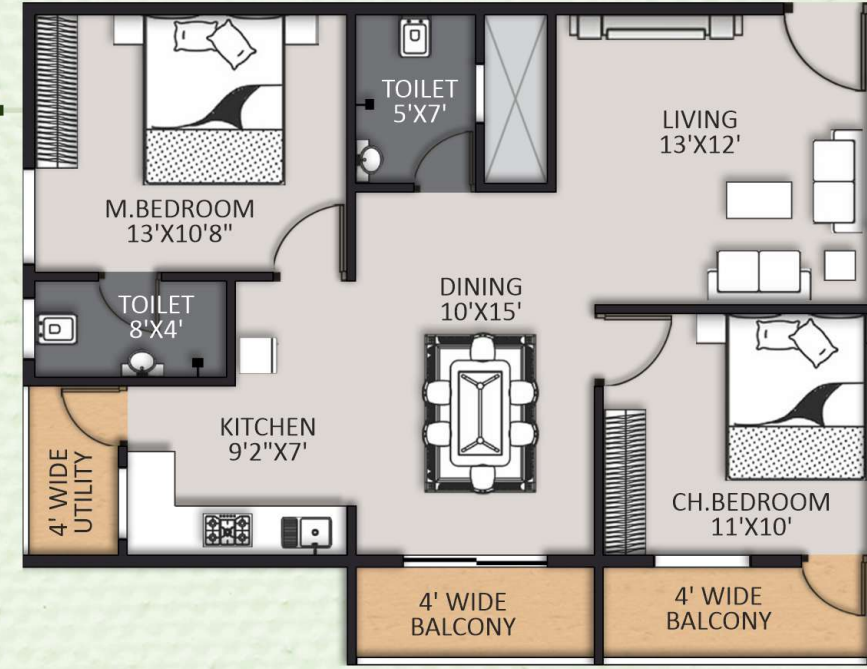
TYPICAL FLOOR PLAN - AREA STATEMENT IN SFT. BLOCK - B

F.No.	Type	Facing	Plinth Area	Common Area	SBA
01	3 BHK	West	1100	308	1408
02	2 BHK	West	910	255	1165
03	3 BHK	West	1063	298	1361
04	3 BHK	West	1098	307	1405
05	3 BHK	West	1132	317	1449
06	3 BHK	West	1132	317	1449
07	3 BHK	North	1094	306	1400
08	3 BHK	North	1094	306	1400
09	3 BHK	East	1198	335	1533
10	3 BHK	East	1078	302	1380
11	3 BHK	East	1078	302	1380
12	3 BHK	East	1078	302	1380
13	3 BHK	East	1078	302	1380
14	3 BHK	East	1078	302	1380
15	2 BHK	North	911	255	1166
16	2 BHK	East	914	256	1170
17	2 BHK	East	914	256	1170
18	2 BHK	East	908	227	1135

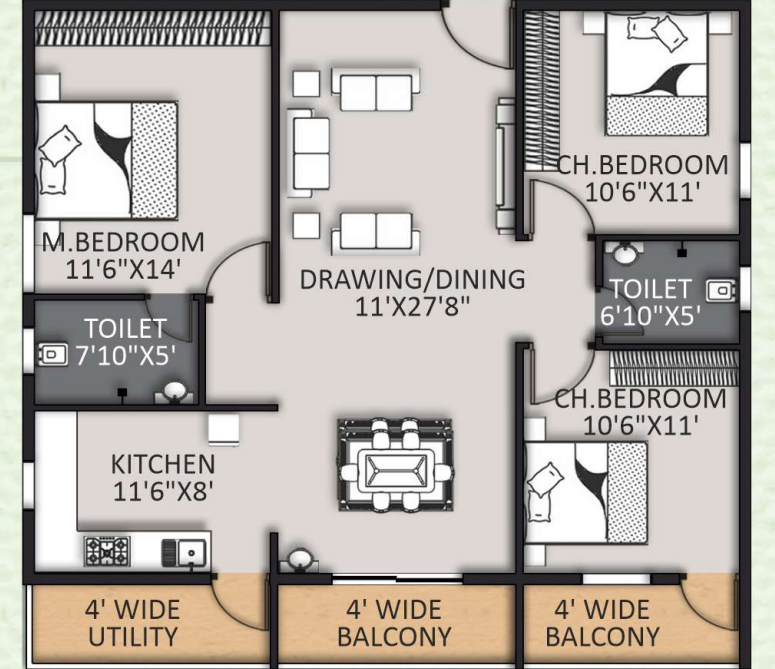




A-01
WEST
2 BHK | **1153**
SFT.

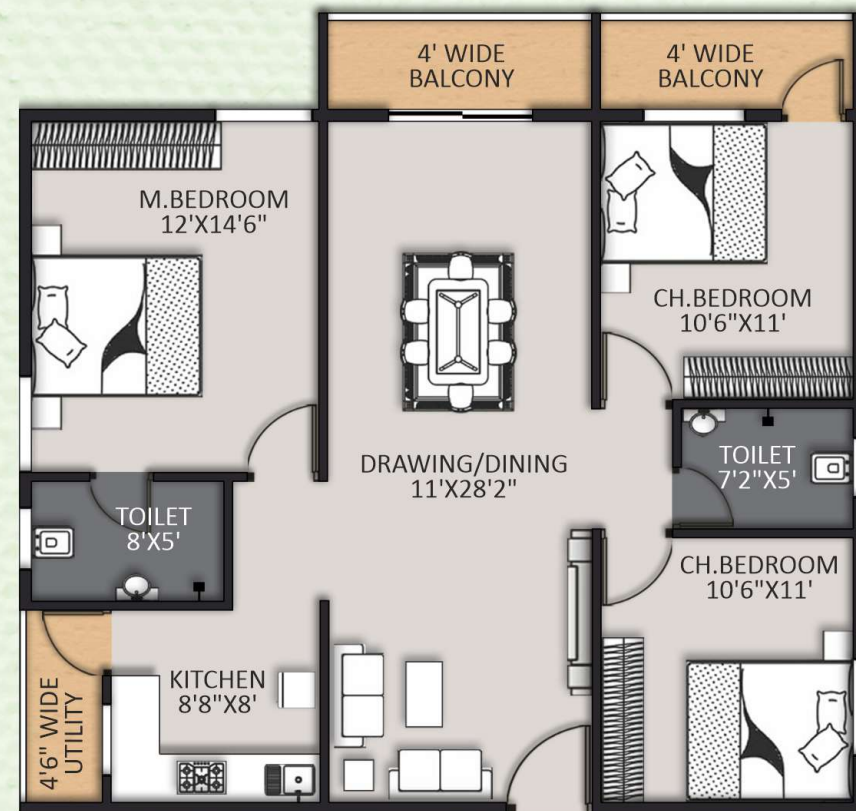


B-04
WEST
3 BHK | **1405**
SFT.

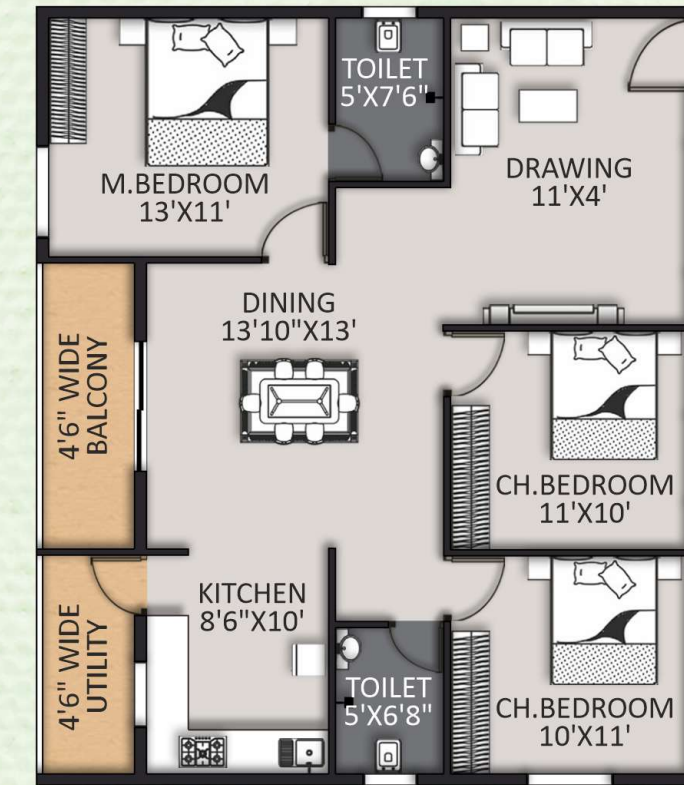


A Living Space That Breathes with Freshness and Grace.

Crafted Spaces That Invite You to Unwind and Reconnect.



A-06
EAST
3 BHK | **1428**
SFT.

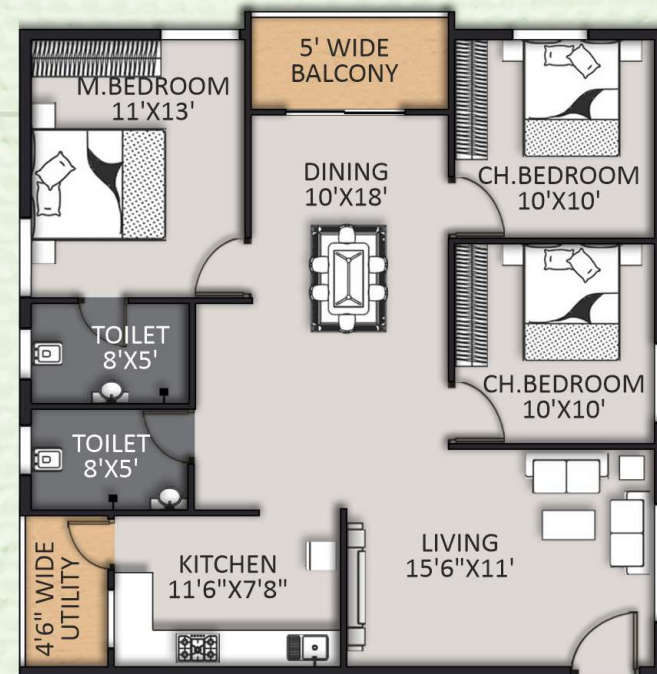


B-07
NORTH
3 BHK | **1400**
SFT.





B-10
EAST
3 BHK | **1380**
SFT.



SPECIFICATIONS

STRUCTURE

RCC framed structure designed for Seismic Zone II. Concrete block masonry walls, External walls 6" internal walls 4".

PLUMBING

Hind ware/Parry ware/branded fittings and sanitary.

PVC/UPVC/CPVC pipes and CI concealed fittings.

Floor traps with stainless steel grating and proper drainage.

DOORS

- Main Door Shutters: Teak wood finish door shutter with teakwood frame, Size of 4'X7' Frame Thickness is 6"X4"
- Bedroom Doors: HDF moulded design shutter with teakwood frame.

WINDOWS

- Branded UPVC Glazed Windows with locking accessories.
- Mosquito mesh shutter for bedrooms for openable shutters.
- Glazing: Premium brand 5mm-thk-float/textured glass.

FLOORING

- 2'x4' premium branded double Vitrified tiles for Flooring.
- 1'x1' premium branded anti-skid ceramic tiles for balconies and utility.

KITCHEN & UTILITY

- Ceramic tiles dado of 2 feet above the granite top.
- Single bowl single drain steel sink with CP tap.
- Water outlet provision for water purifier.

TOILETS

- Walls: Premium design tiles dado up to 7' 0" height.
- Sanitary Ware: Hind ware/Parry ware branded designer EWC & Wash Basin.
- Fixtures: Hind ware/Parry ware branded CP fittings.
- Hot and cold mixer for the wash basin. CP diverter with overhead shower.

LOBBY AREAS

Combination of Tiles/Granite flooring.

WASH AREA

- Anti-skid ceramic tiles.
- Provision of electrical point for Washing Machine with water point.

OTHER FINISHES

- Walls: Interiors - Smooth plastering finish.
- Exteriors - sponge finish.
- Internal Painting: Plastic emulsion on interior walls and ceilings with putty.
- External wall painting: Exterior premium grade acrylic emulsion painting.



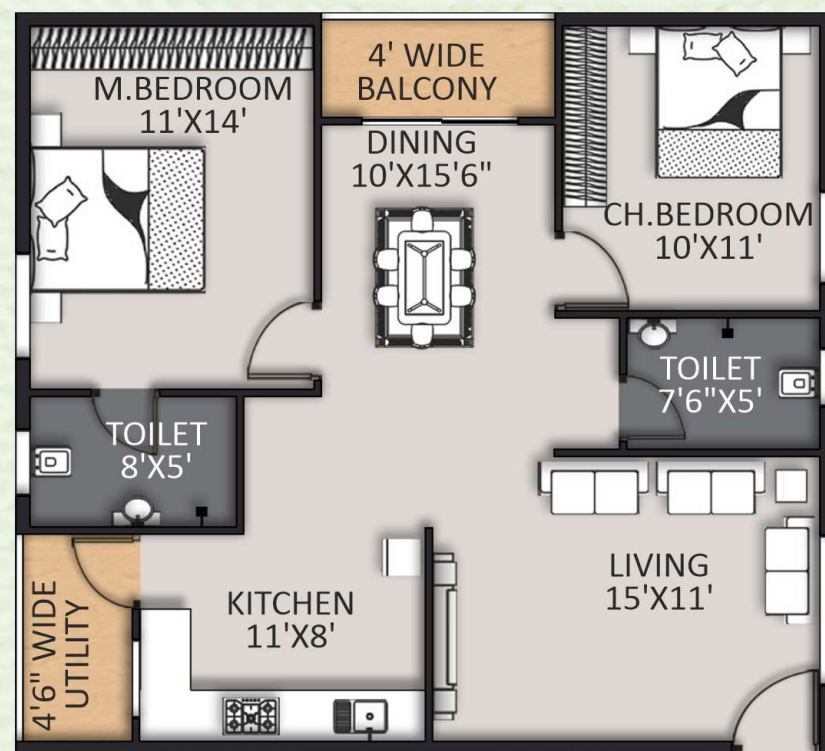
POWER

BESCOM power supply. D.G. Backup for all the flats excluding All 16amps.

WATER SUPPLY

Bore well

A Living Space That Breathes with Freshness and Grace.



B-18
EAST
2 BHK | **1135**
SFT.



ELECTRICAL

- Havells/National/universal/Prince and Schneider equivalent ISI grade concealed PVC conduits with copper wiring.
- Modular switches with metal boxes.
- All 3-bedroom flats will be provided with 4 KW power & 2 Bedroom flats with 3 KW power.
- AC provision for all bedrooms.



LIFT

Kone/Otis/Johnson Automatic lifts from basement floor to top floor.

SECURITY

Round the clock security guards. CCTV at security room.



LOCATION PLAN
(NOT TO SCALE)



Stay Connected to the City, Grounded in Greenery

SCHOOLS

- + The Prodigies Intl. School
- + Gear Innovative Intl. School
- + VIBGYOR
- + Sri Sri Ravi Shankar Vidya Mandir
- + Deens Academy
- + Orchid Int. School
- + Global Indian Int. School
- + Green Wood High School
- + Vagdevi Vilas School
- + New Horizon Gurukul
- + Basil Woods

HOSPITALS

- + Sakra World Hospital
- + Mainpal Hospital
- + Fortune Diagnostic Center
- + Svasta Hospital

IT PARKS

- + Embassy Tech Village
- + RGA Tech Park
- + CISCO
- + ECO Space
- + Wipro Head Office
- + Intel
- + Oracle India
- + Accenture
- + Prestige Tech Park
- + ITPL

HOTELS

- + Sheraton 4 Points
- + Taj Vivanta
- + The Den
- + JW Marriott Hotel
- + Holiday Inn



Developer Address:
STSK Builders & Developers
SVS Complex, 2nd Floor,
Bhattarahalli, Bengaluru - 560 049.

Site Address:
Sy No. 7/4, Varthur Village & Hobli,
Varthur to Balgeri road,
Bengaluru - 560 087.

Architect
S'n'S Associates
Architect & Engineers
H.O: Vidya Nagar, Hyderabad. Ph: +91 98480 16269
B.O Jubilee Hills, Hyderabad. Ph: +91 98480 16269
B.O: Horamavu, Bengaluru. Ph: +91 73535 59202
E-mail: info@snsassociates.co.in

Location Scanner



Website Scanner



+91 90350 20617, 90350 20615 stsknatureelation@gmail.com
 www.stskbuilders.com

Note: This brochure is only a conceptual presentation of the project and not a legal offering. The promoters reserve the right to alter and make changes in elevation, specifications and plans as deemed fit.