

LAUNCHING URBAN SUITES IN THE HEART OF MULUND



Artist's Impression

**ASHAR
MAPLE**
VAISHALI NAGAR, MULUND (W)

1 & 2 BHK
URBAN SUITES

A MASTERPIECE THAT MANIFESTS URBAN SOPHISTICATION AND LUXURIOUS ELEGANCE



This image is for representational purpose only.

Ashar Maple homes are conceptualized to offer urban luxury with an edge over the rest with its stunning panoramic views. The thoughtfully designed urban suites bestow with a lavish lifestyle that manifests brilliance above par. Upgrade to the real treasure trove that dazzles with urban luxury. It's truly a fantasy realized; step in and experience it yourself.



This image is for representational purpose only.

STRONG CONNECTIVITY



This image is for representational purpose only.

FINEST INDULGENCES



This image is for representational purpose only.

LUXURIOUS LIFESTYLE



This image is for representational purpose only.

SUPREME DESIGN

A MASTERPIECE THAT TAKES THE JOYS OF LIFE A NOTCH ABOVE



Artist's Impression

THE ARENA - 12000 SQ.FT. EXCLUSIVELY LANDSCAPED PODIUM

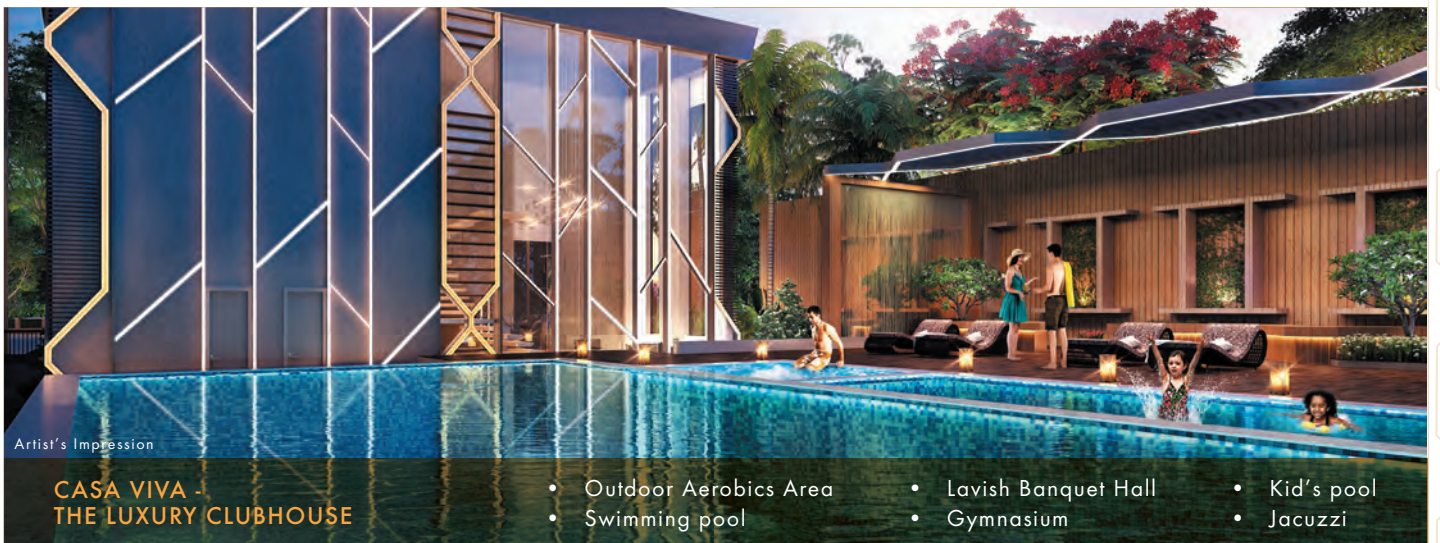
- Senior Citizen's corner
- Manicured Landscape
- Net Cricket
- Toddler's Play Area
- Metre Skating Rink
- Running & Cycling Trail
- Sports Arena with Basket Ball, Football Turf, Volleyball, Badminton
- Munchkin's Land With Slides and Jungle Gym



Artist's Impression

SKY HIGH - MULUND'S HIGHEST ROOFTOP LOUNGE

- Barbeque deck
- Cabana sit-outs
- Sunset Viewing Gallery
- Meditation & yoga deck
- Rooftop Garden
- Reflexology path



Artist's Impression

CASA VIVA - THE LUXURY CLUBHOUSE

- Outdoor Aerobics Area
- Swimming pool
- Lavish Banquet Hall
- Gymnasium
- Kid's pool
- Jacuzzi

A MASTERPIECE THAT OFFERS THE FINEST QUALITY OF LIFE



LIVING ROOM

- Vitrified Flooring
- Wall finishing – Plastic Emulsion Paint
- Windows – Aluminum sliding windows
- Adequate points for TV & Telephone
- Video door phone

KITCHEN

- Vitrified Flooring
- Granite Kitchen Platform top
- Stainless steel sink
- Provision for Water Purifier Connection
- Modular switches of Roma or Equivalent make

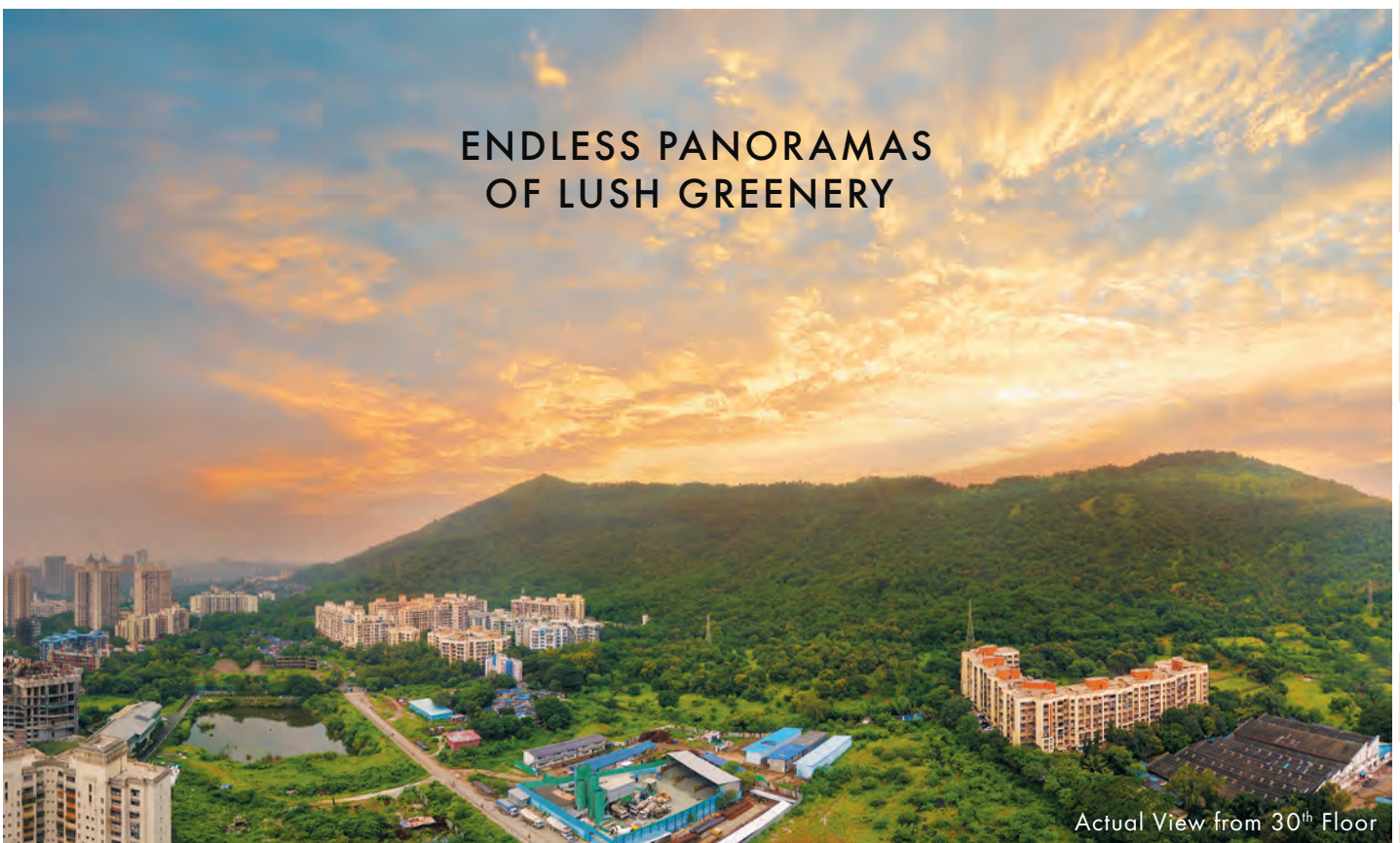
BEDROOM

- Vitrified Flooring
- Wall finishing – Plastic Emulsion Paint
- Windows – Aluminum sliding windows
- Adequate points for TV & Telephone
- Attached bathroom

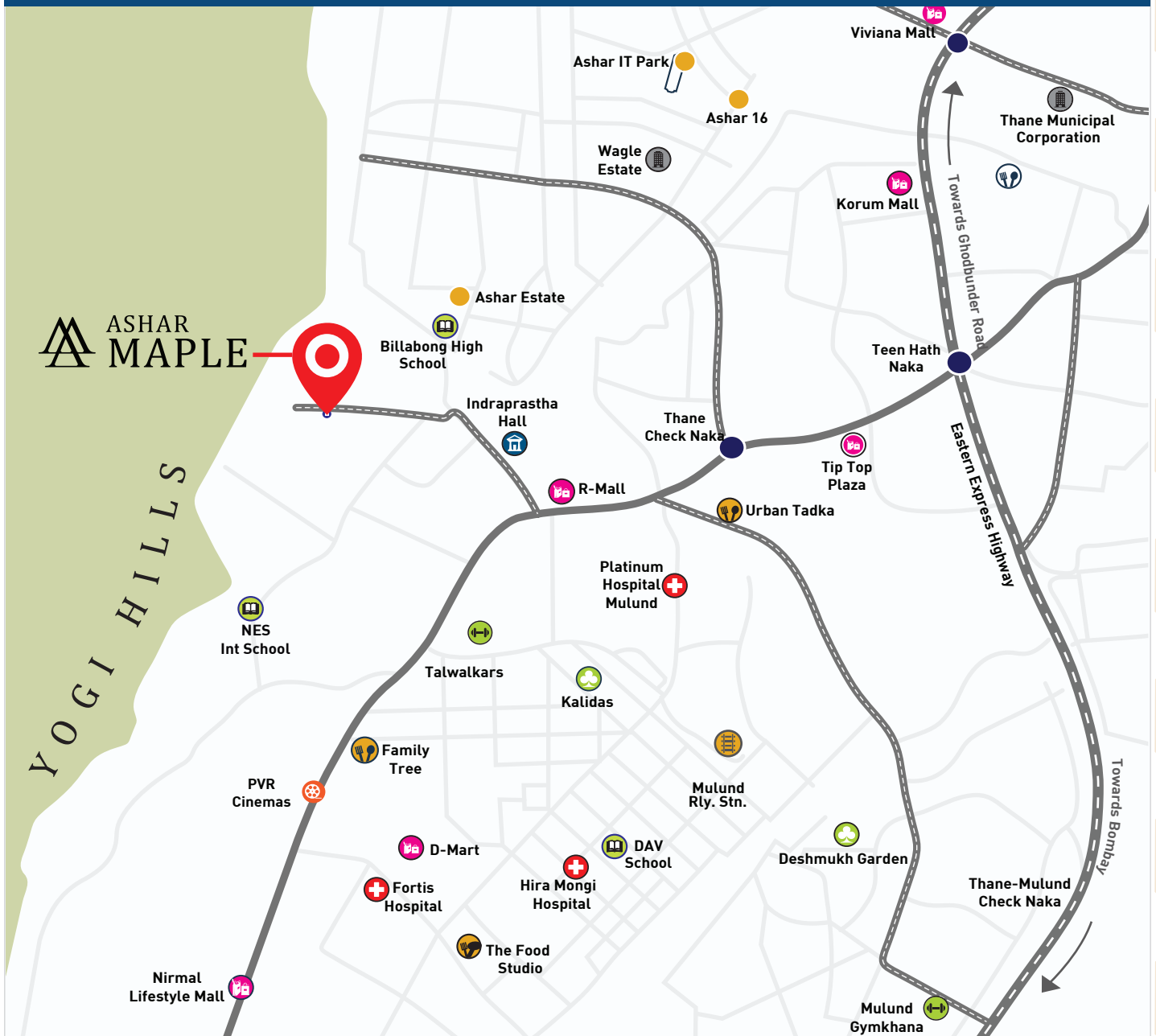
TOILET

- Copper or UPVC Concealed Piping
- Water Heater
- Anti-skid flooring
- Designer Ceramic Dado tiles up to door height
- Jaguar or equivalent fitting

ENDLESS PANORAMAS OF LUSH GREENERY



A LANDMARK IN MULUND'S URBANITE LOCALITY



CONNECTIVITY

Checknaka Metro Stn. – 5 mins
 Mulund Station – 7 mins
 Wagle Estate – 8 mins

NATURAL BEAUTY

Deshmukh Garden – 11 mins
 Yogi Hills – 2 mins

SHOPPING

R-Mall – 5 mins
 Viviana Mall – 7 mins
 D-Mart – 11 mins

ENTERTAINMENT

Kalidas Auditorium – 7 mins
 PVR Mulund – 9 mins

EDUCATION

NES School – 6 mins
 DAV School – 7 mins
 Billabong School – 8 mins

HEALTHCARE

Platinum Hospital – 14 mins
 Fortis Hospital – 13 mins

ASHAR
 PROMISES DELIVERED



86555 18555

Strategic Partner

ANAROCK
 RESIDENTIAL

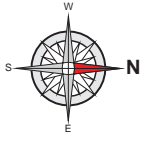


MahaRERA Regn. Nos: Ashar Maple - P51800023941, Anarock Property Consultants Pvt. Ltd. - A5190000108, available at maharera.mahaonline.gov.in

Project is financed by Piramal Capital & Housing Finance Limited.

Disclosure: This document does not constitute any form of an advertisement, offer and/or agreement and all purchases/leases shall solely be governed by the terms and conditions of the agreement for sale/lease. All images are for representative purpose unless otherwise noted. The timings shown here are approximate and may vary depending on traffic conditions.

MASTER LAYOUT



13.40 M WIDE DP ROAD

INTERNAL ACCESS ROAD

A THE ARENA

PODIUM

- SENIOR CITIZEN'S CORNER
- MANICURED LANDSCAPE
- NET CRICKET
- TODDLER'S PLAY AREA
- PAVED COMMUNITY DECK
- SPORTS ARENA WITH BASKET BALL COURT, FOOTBALL COURT, VOLLEYBALL, BADMINTON
- MUNCHKIN'S LAND WITH SLIDES AND JUNGLE GYM
- METRE SKATING RINK
- TEA PARTY BAY
- RUNNING & CYCLING TRAIL

B SKY HIGH

SKYDECK

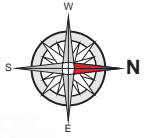
- BARBEQUE DECK
- CABANA SIT-OUTS
- SUNSET VIEWING GALLERY
- MEDITATION & YOGA DECK
- ROOFTOP GARDEN
- REFLEXOLOGY PATH

C CASA VIVA

CLUBHOUSE

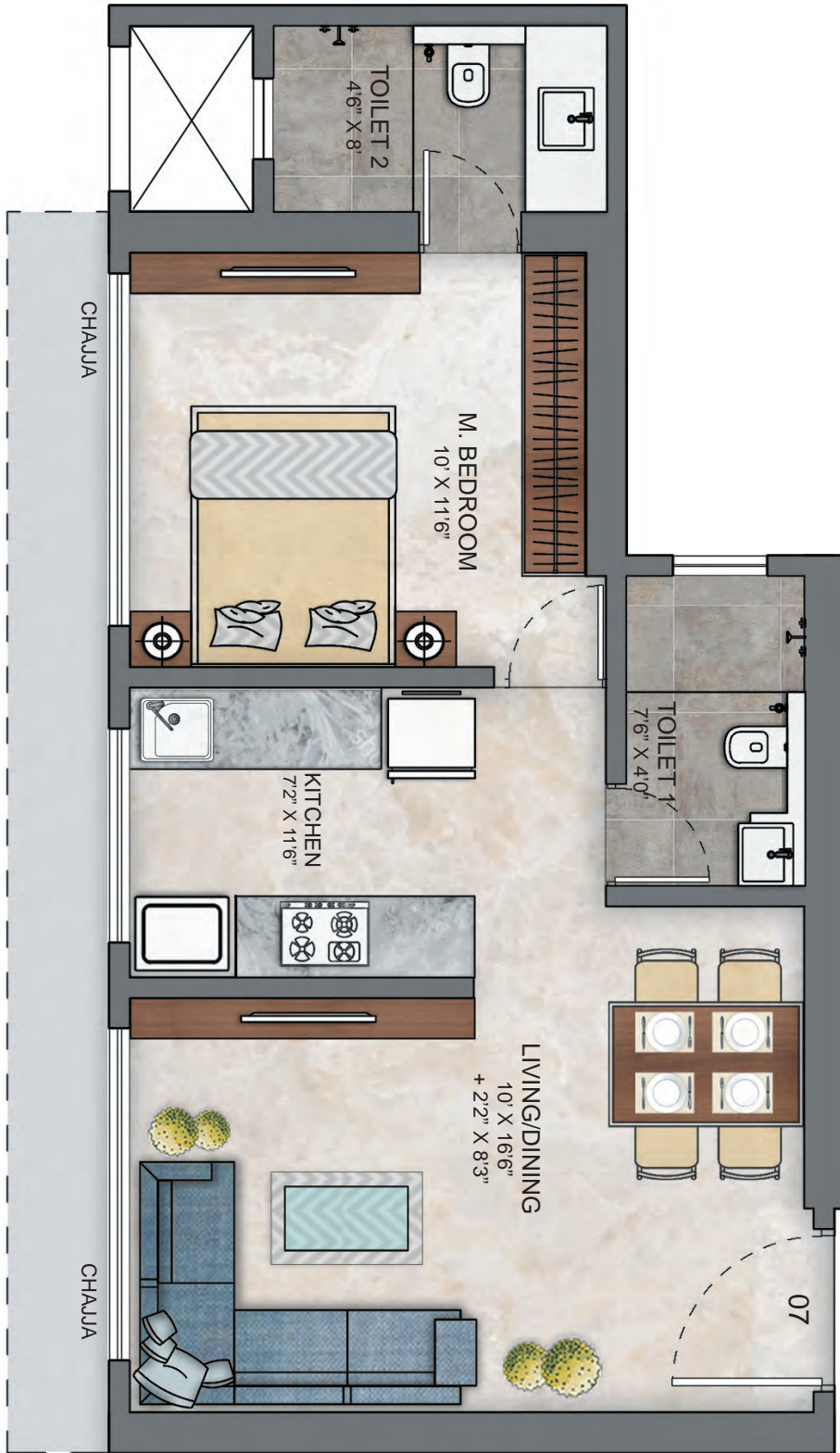
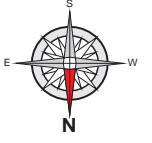
- LAVISH BANQUET HALL
- GYMNASIUM
- OUTDOOR AEROBICS AREA
- SWIMMING POOL WITH SEPARATE KID'S POOL

TYPICAL FLOOR PLAN



UNIT TYPE	AREAS (IN SQ. FT)
1 BHK	424 - 469
2 BHK OPTIMA	524
2 BHK ULTIMA	555 - 558
2 BHK GRAND	683

1 BHK TYPE - 3 | AREA - 466 SQ. FT



Key Plan

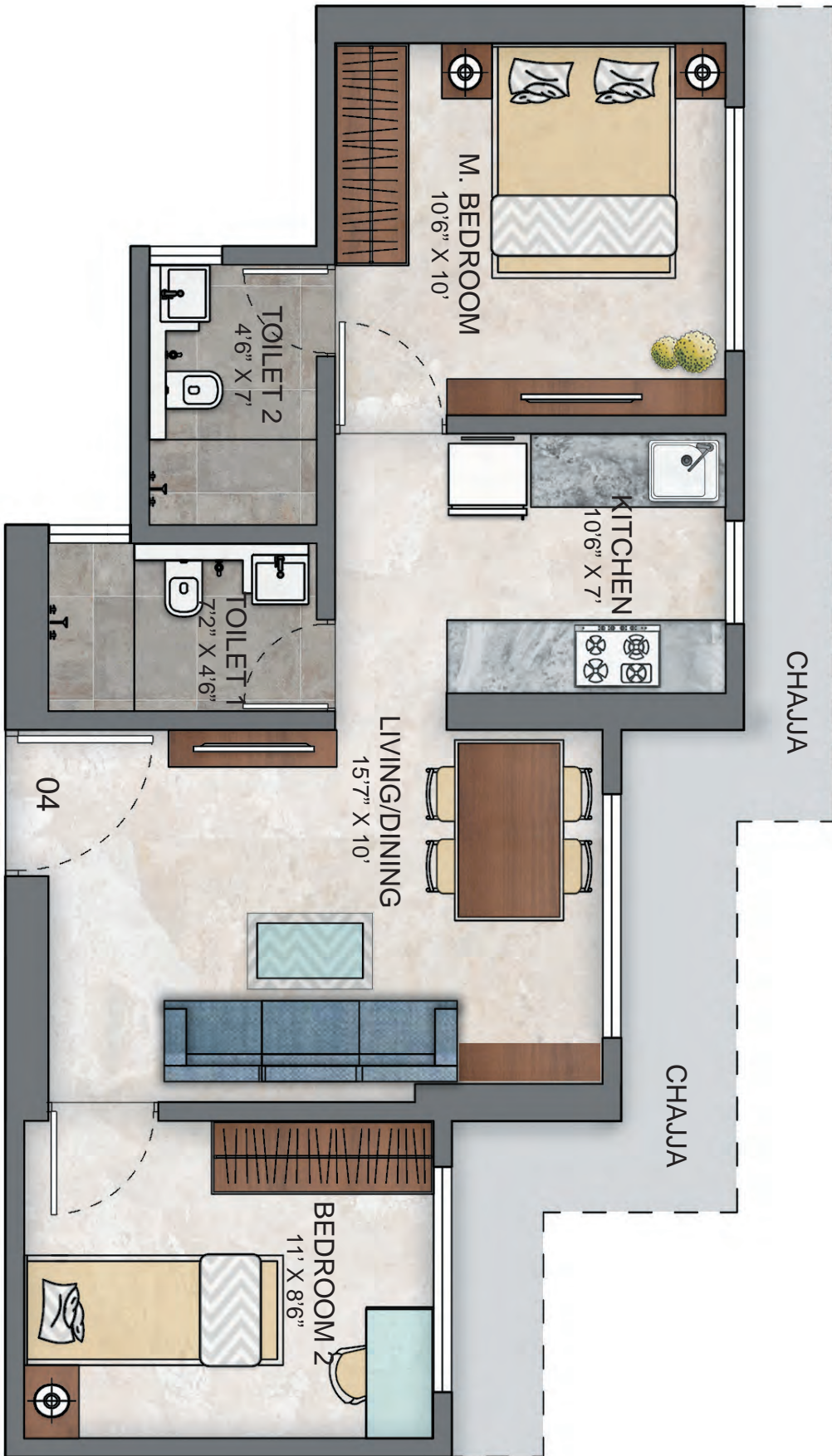
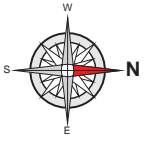
1 BHK TYPE - 1 | AREA - 424 SQ. FT



1 BHK TYPE - 2 | AREA - 469 SQ. FT



2 BHK - OPTIMA | AREA - 524 SQ. FT



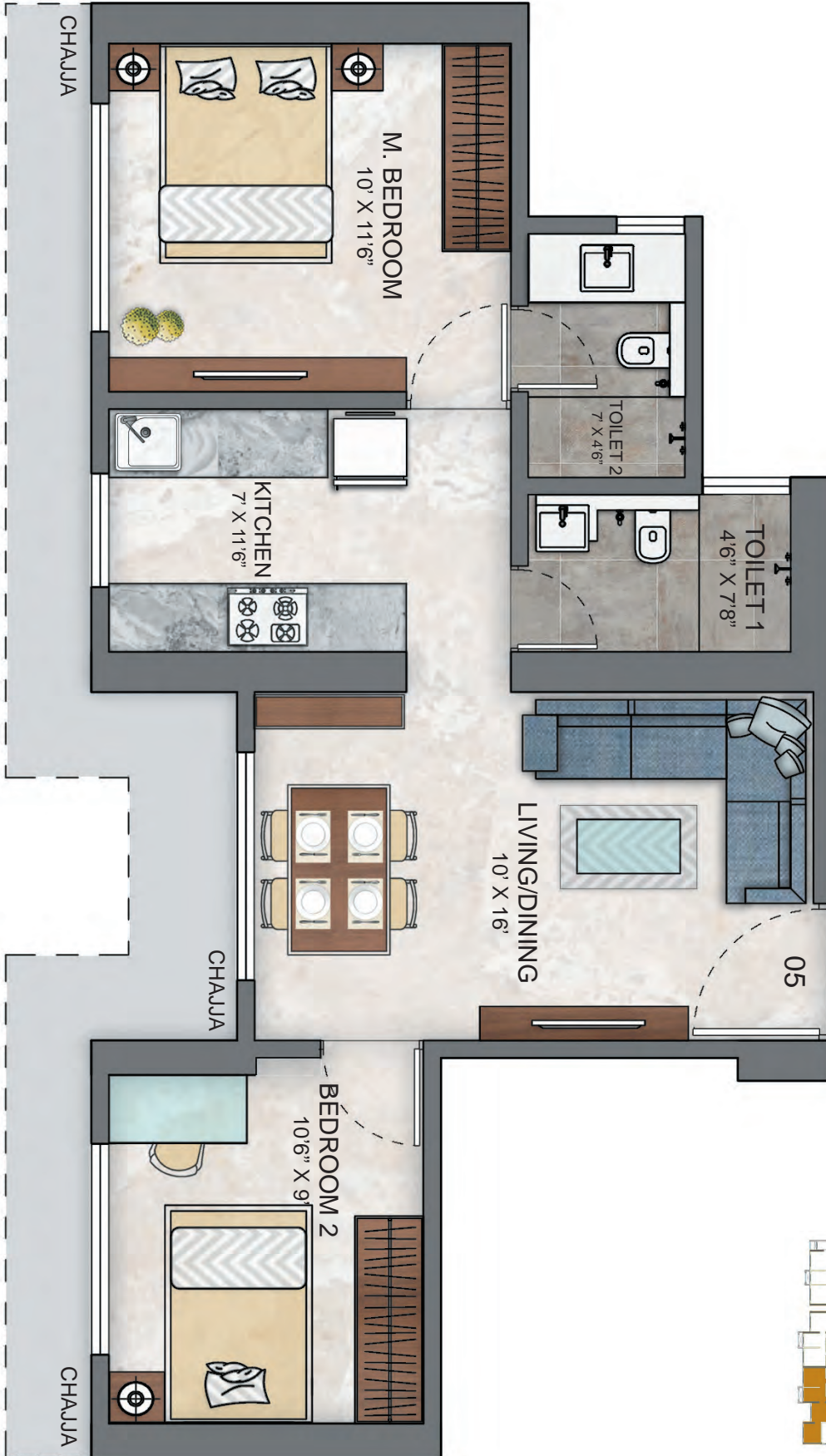
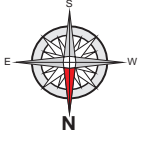
Key Plan

2 BHK - ULTIMA | AREA - 556 SQ. FT



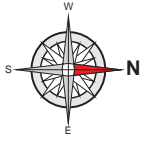
Key Plan

2 BHK - ULTIMA | AREA - 557 SQ. FT



Key Plan

2 BHK - GRAND | AREA - 683 SQ. FT



Key Plan