

Bring
FORTUNE
into your
LIFE

A project by



SRI SUKHADAH
BUILDERS & DEVELOPERS



SS

PRISTINE

YOUR PLACE. GREAT LIFE.

2 BHK

LUXURY APARTMENTS

@ ADIBATLA

Approved by

hmda
Growing Global



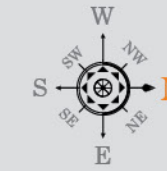
No. P02400008866

relish **LIFE'S**
sweet **MOMENTS**


SS
PRISTINE
YOUR PLACE. GREAT LIFE.



TYPICAL FLOOR PLAN



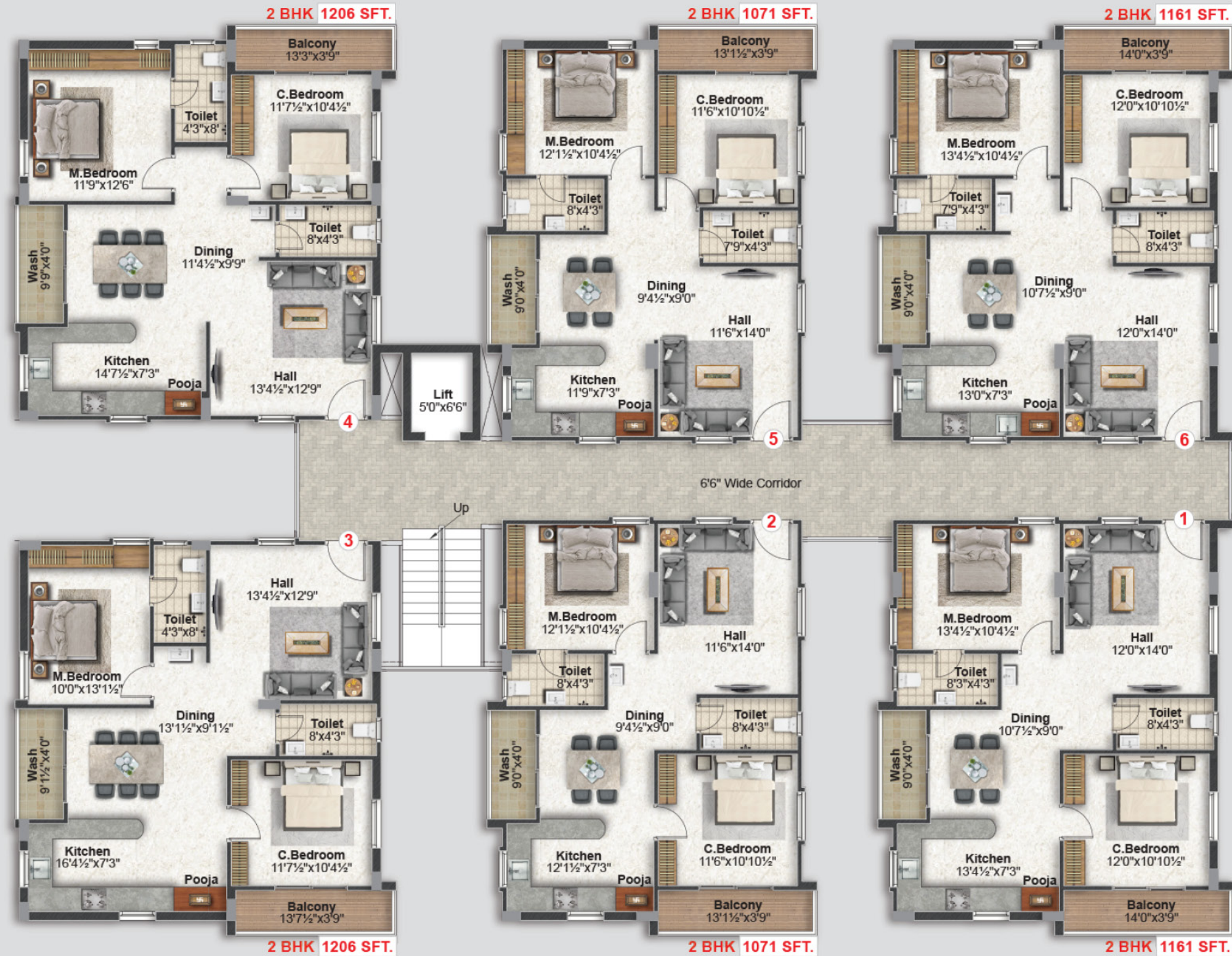
Area Statement

Flat No.	Type	Facing	Total Saleable Area (Sft)
1	2 BHK	West	1161
2	2 BHK	West	1071
3	2 BHK	West	1206
4	2 BHK	East	1206
5	2 BHK	East	1071
6	2 BHK	East	1161

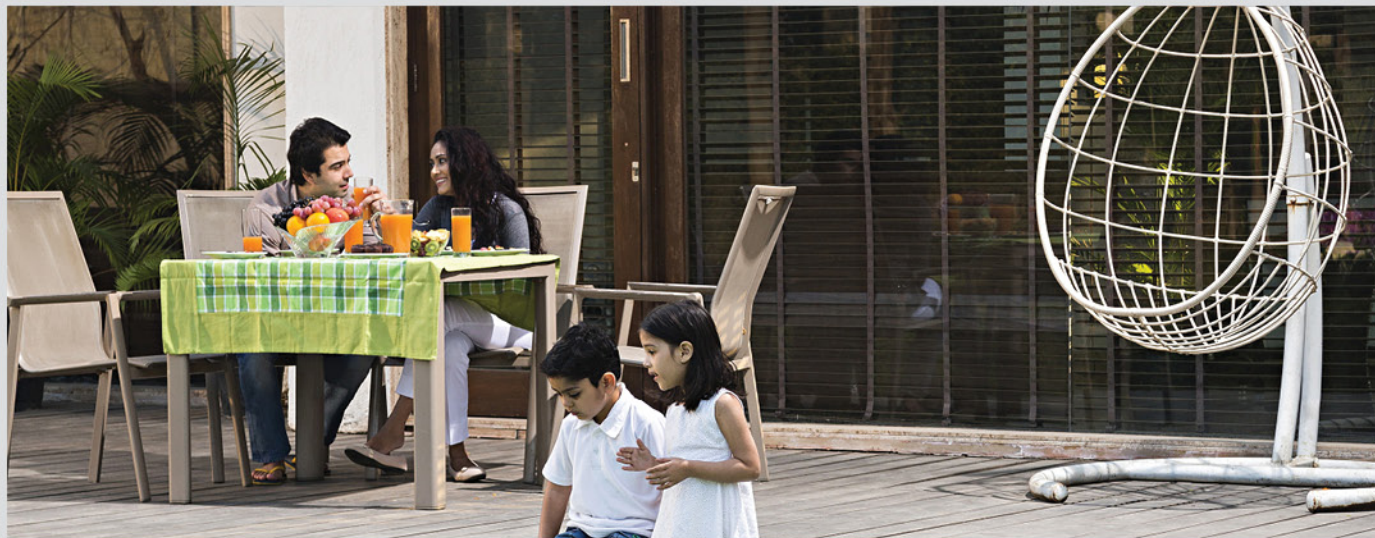


relish LIFE'S sweet MOMENTS

Simplicity can always come in grand ways. And so, we are delighted to present a residential commune with limited number of homes, in fact just Six of them on each floor. Built with features and facets that are essential and status-elevating, here are 2 BHK homes. Located in Adibatla, in Hyderabad, welcome yourself to sweet moments of life in your own home at SS Pristine.



40' WIEDE NORTH ROAD



PROJECT HIGHLIGHTS

- Strategic location
- Premium Quality Construction
- 100% Vaasthu
- Cable TV provision
- Spacious Living
- Tot-lot
- Covered Car Parking
- No Common walls
- 6-passenger lift
- Rain Water Harvesting
- CCTV Surveillance
- Solar Fencing
- Project Approved by HMDA

MAIN STRUCTURE
R.C.C. Framed Structure.

WALLS
Brick walls with C.M, according to Plan.

KITCHEN
Granite slab for platform with 2' height glazed Tiles dadoing and stainless steel sink.

WATER SUPPLY
Bore water through overhead tank.

SEWERAGE
Standard sewerage lines.

LIFT
6 Passengers standard make lift.

FINISHING
Double coat sponge finish for internal and external walls.

ELECTRICAL
Finex / Finolex / Anchor / equivalent brand wiring and Switches.

EXTRA COST
Transformer Charges, internal wall changes, chajjas and surcharges will be extra as applicable.

DOORS
Main Door: Teak wood Frame with OST Shutter, Internal Doors: Flush doors with WPC frames.

WINDOWS
UPVC windows with M.S.Safety Grills.

SPECIFICATIONS

TOILETS
All toilets will consist of

- EWC with flush tank of Cera / Solo / Johnson / equivalent brand.
- Hot and cold water wall mixer with overhead shower.
- All C.P. Fittings are Player / Solo / Johnson / Cera.
- Anti-skid tiles flooring and 7'0 height glazed.
- Two Wash basins- Bath Room and Dining Area.
- Water and Drainage Pipelines: Sudhakar / Astral / Ashirwaad.

FLOORING
Vitrified Tiles 2'x2' in Size and Granite for Corridors.

PAINTING
Wall putty with emulsion for Internal works, exterior paints for external walls, enamel paints for Grills. Main Door: Polish, Matt finish.

PARKING
Parking will provide on payment of extra charge.

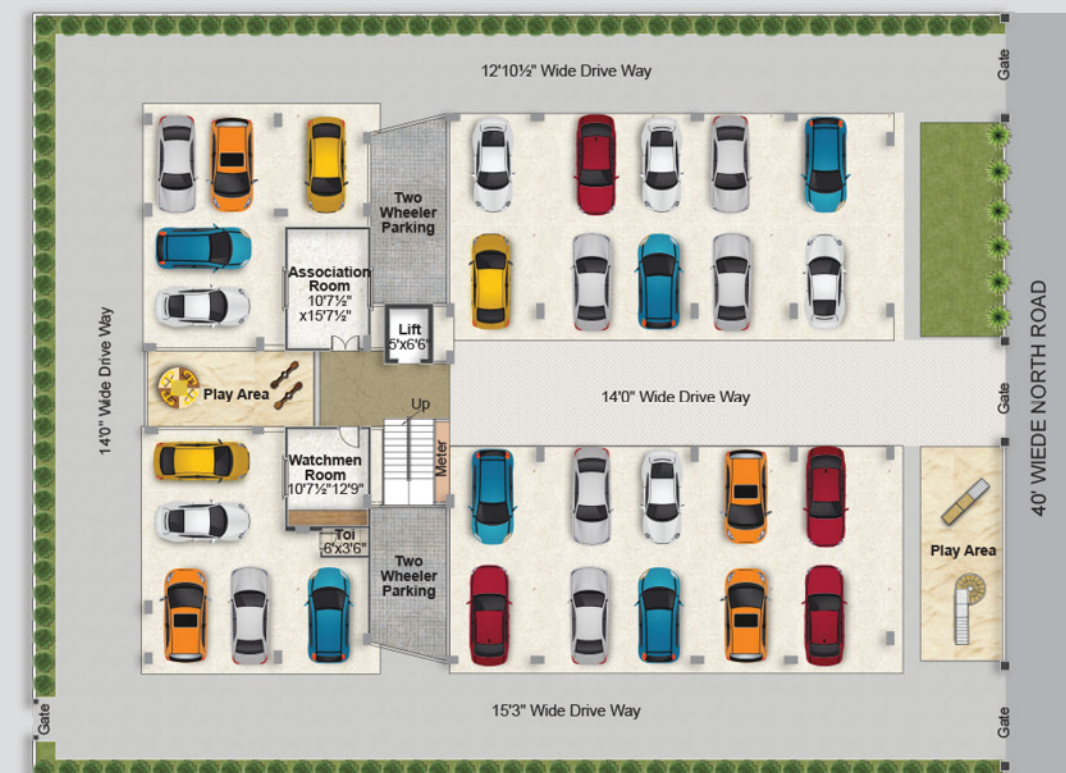
River Sand : For Plastering
Robo Sand : For the rest of the construction
Steel : TMT Grade.

GENERATOR
Power backup through inverter for lift and common areas.

NOTE
1) Registration Charges, GST and any other taxes applicable as per government norms to be borne by customers only.
2) Persons desire to alter / modify their flat / premises Shall inform the same before commencement of Brick work. Any work after brick work will be Chargeable.

PARK where **IT'S** always **SECURE.**

PARKING PLAN



COMPLETED PROJECTS IN ADIBATLA



SS SAANVI

SS CREST

SS AAKRITI

SS HARMONY

SS ADITHI

SS SIGNATURE

SS ZENITH



SCAN FOR LOCATION



SRI SUKHADAH
BUILDERS & DEVELOPERS

Head Office
C1701, Rajapushpa Regalia, Kokapet,
RR District, Telangana-500075
Call : 9701 007794, 70369 05412

Site Address
PNo 231, Sharadha Enclave, Near TATA
Aerospace SEZ, Adibatla, RR District,
Telangana - 501510.

Architects



ARCHNOVA
architects & Structural Engineers
Cell: 98484 73208

NOTE : This brochure is only a conceptual presentation of the project and not a legal offering.
The promoters reserve the right to make changes in plans, specifications and elevation as deemed fit.

Artifice 98852 53570