

BHAVESHWAR RUDRA
PLOT NO. 526,527, SECTOR-25A



RUDRA CORNER
PLOT NO. 116, SECTOR-09



HARI OM RUDRA
PLOT NO. 17F, SECTOR-25A

Project by



RUDRA
DEVELOPERS
YOUR DREAM OUR STRUCTURE

RCC Consultant :
B.S. Sukthankar & Associates

Architect :
Atul Patel Architects



MAHARERA NO. P52000066458
<https://maharera.maharashtra.gov.in/>

CONTACT: 9594426326 / 7021102628 / 9372245797

RUDRA महादेव

www.therudragroup.in

Disclaimer : All Plans, Drawing, Amenities, Facilities Etc. Are subject to approve of the respective authorised it would be changed, it necessary. They this creation remain with the developer. All rendering Pictures & Maps are the artist constructions & not actual depictions of the plot, roadways are landscaping. The brochure is for guidance & not a legal document the brochure should also reproduced, copied or made available other any form of transmission. The design & specification depicted in the brochure are subject to change without prior notice. Proposed development as mentioned in the brochure is subject to approved of complete authorities .

Project Features

Clear Title CIDCO Trasfer Plot

G+7 Storeyed Building

Residential Cum Commercial Project

Shops & 1BHK Flats

Earthquake Resistant RCC Design

Power Backup for Common Area | CCTV Camera

Automatic Lift of Reputed Company

Loans Available from major Banks & Financial Institutions.

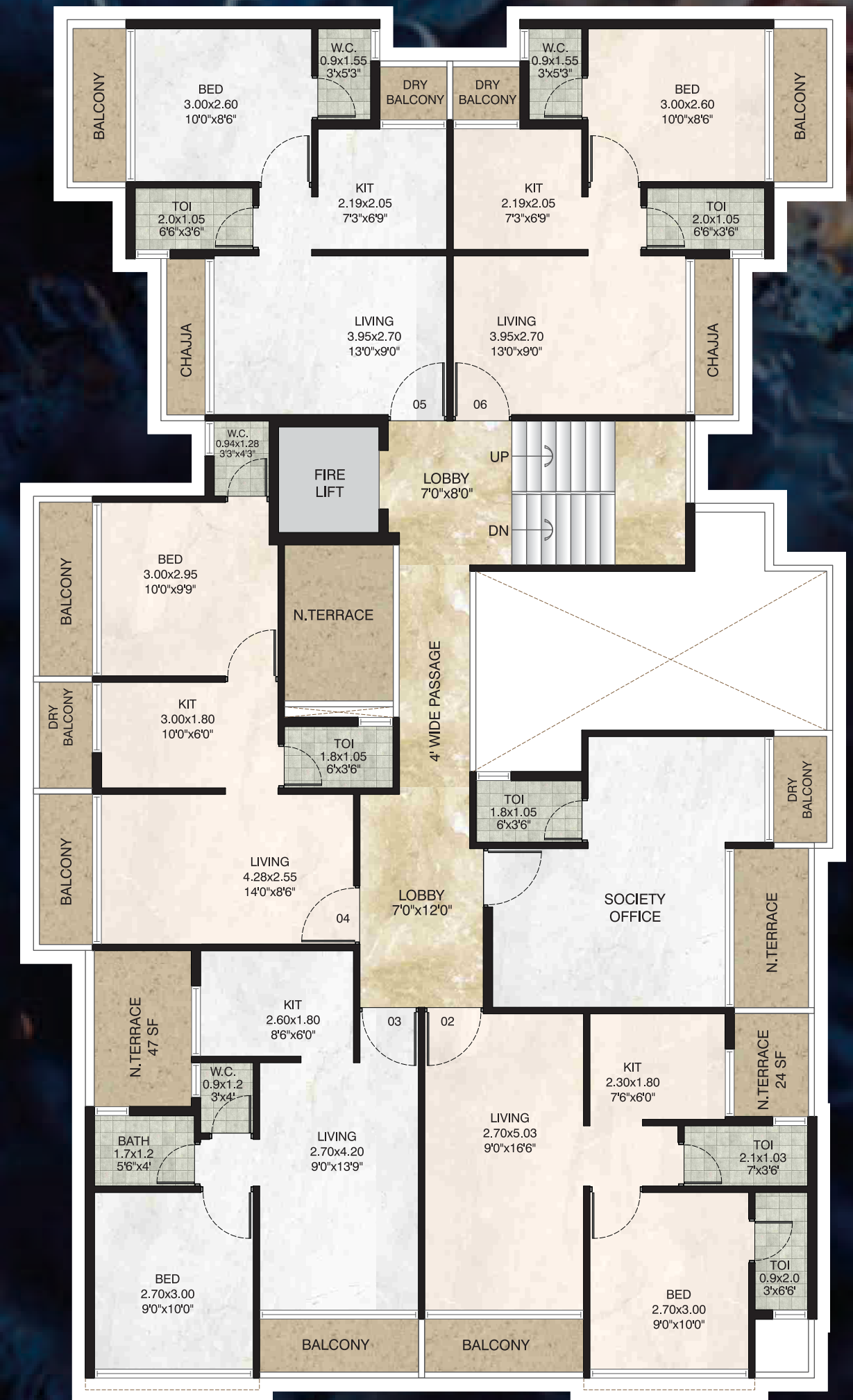
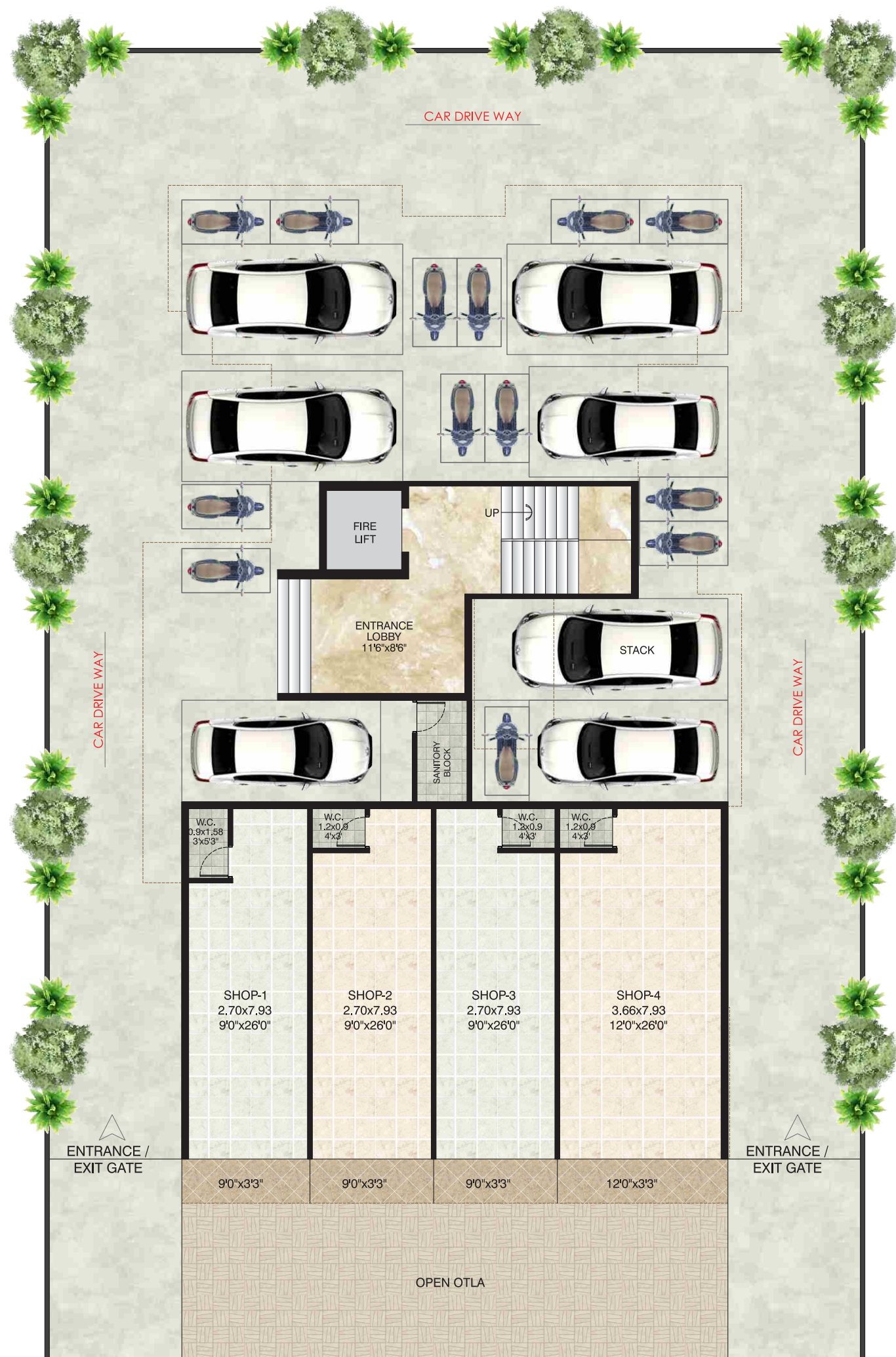
Amenities

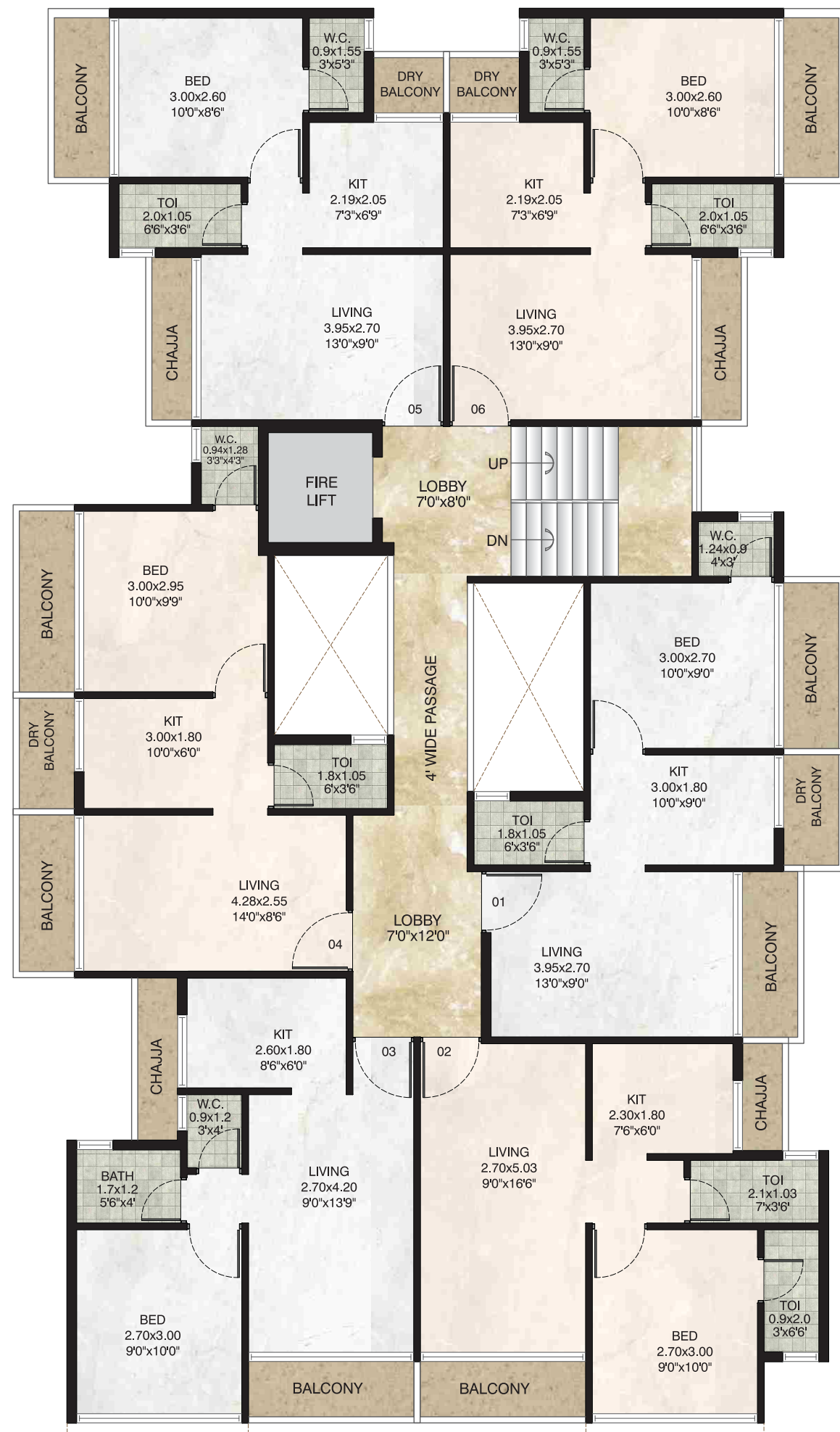
- Designer Vitrified 24"x24" Tiles Flooring.
- Designer Digital Wall Tiles in W/C, Bath Room & Kitchen.
- Bathroom Fittings of Reputed Brands.
- Kitchen Platform with Granite Top and Stainless Steel Sink.
- Decorative Laminated Main Doors with wooden frame.
- Aluminum Louvered / PowderCoated Sliding Windows.
- Concealed Electrical Copper Wiring (ISI) with Circuit Breakers.
- Modular Switches of Reputed make.
- Adequate electrical points in each room.
- Double Coat Plaster and Acrylic Paint on External Walls & Emulsion Paint on Internal Walls.
- Brickbat water proofing treatment for Terrace.
- Underground & Overhead Water Tank.

Location Features

- 5 Min Drive To Kharkopar Railway Station (Nerul To Uran)
- Ramseth Thakur International Sports Complex
- Nearby Pune, Goa Highway.
- Near Sewri - Nhava Sheva Transharbour Link.
- Near Prop. Navi Mumbai International Airport.
- Nearby Highway Connectivity.
- Easy access to Belapur, Seawoods & Vashi.
- Nearby School, Colleges & Shopping Markets,







20M ROAD SIDE

2ND TO 6TH FLOOR PLAN



20M ROAD SIDE

7TH FLOOR PLAN