



**SAMRAAT  
VRINDAVAN**

OM NAGAR, OPP. SWAMI NARAYAN TEMPLE,  
MUMBAI-AGRA HIGHWAY FRONT, NASHIK



**SAMRAAT**

POWER OF IMAGINATION

A Joint Vetur

**D.S.P**

Enterprises, Nashik

Construction | Infrastructure | Hotels

Nashik Office :

Samraat Group, Samraat House, Tagore Nagar, Opp. Dr. Ambedkar Nagar, Nashik Pune Highway, Nashik - 422006.  
Tel: U91-253-2418080 (Four Lines) Fax: U91-253-2418084 E-mail: customercare@samraatgroup.com.

Registered Office :

2, Veena-Beena Shopping Center, Opp. Bandra Station, Bandra (W), Mumbai - 400050.

[www.samraatgroup.com](http://www.samraatgroup.com)

Call - Rakesh - 9011037020, Ganesh - 9011037015, Site Phone 0253 - 2620165

Project Approved by major Financial Institutions

Disclaimer: All specifications, drawings, amenities, facilities, parameters, etc., shown in this brochure are subject to change as per the approval from the respective authorities. The final discretion to change amenities and specifications remains with the developers.



# SAMRAAT VRINDAVAN

*A Divine Abode at Nashik*

*Om Nagar, opp. Swami Narayan Temple, Mumbai-Agra Highway Front  
Nashik*



|| *Let my ears hear thy flute through eternity* ||



*The land that recited the love saga of Radha and Krishna. The land that saw  
miracles of a child who grew up to be the Master who enlightened us with the Bhagwat Gita.*

*The land that saw the rise of Lord Krishna.*

*Vrindavan, a paradise on the banks of river Yamuna, where the soul wafted in the  
breeze as a divine tune from Lord Krishna's flute. From the taming of the notorious  
serpent Kalia to playing the eternal lover with the gopis, Lord Krishna symbolised  
both shelter and timeless love and the land to experience it all here is in*

*"SAMRAAT VRINDAVAN".*

# SAMRAAT VRINDAVAN

OM NAGAR, OPP. SWAMI NARAYAN TEMPLE,  
MUMBAI-AGRA HIGHWAY FRONT, NASHIK



*Presenting*

SAMRAAT VRINDAVAN - PEACEFUL 2 & 3 BHK TERRACE RESIDENCES

*|| A Divine Abode at Nashik ||*



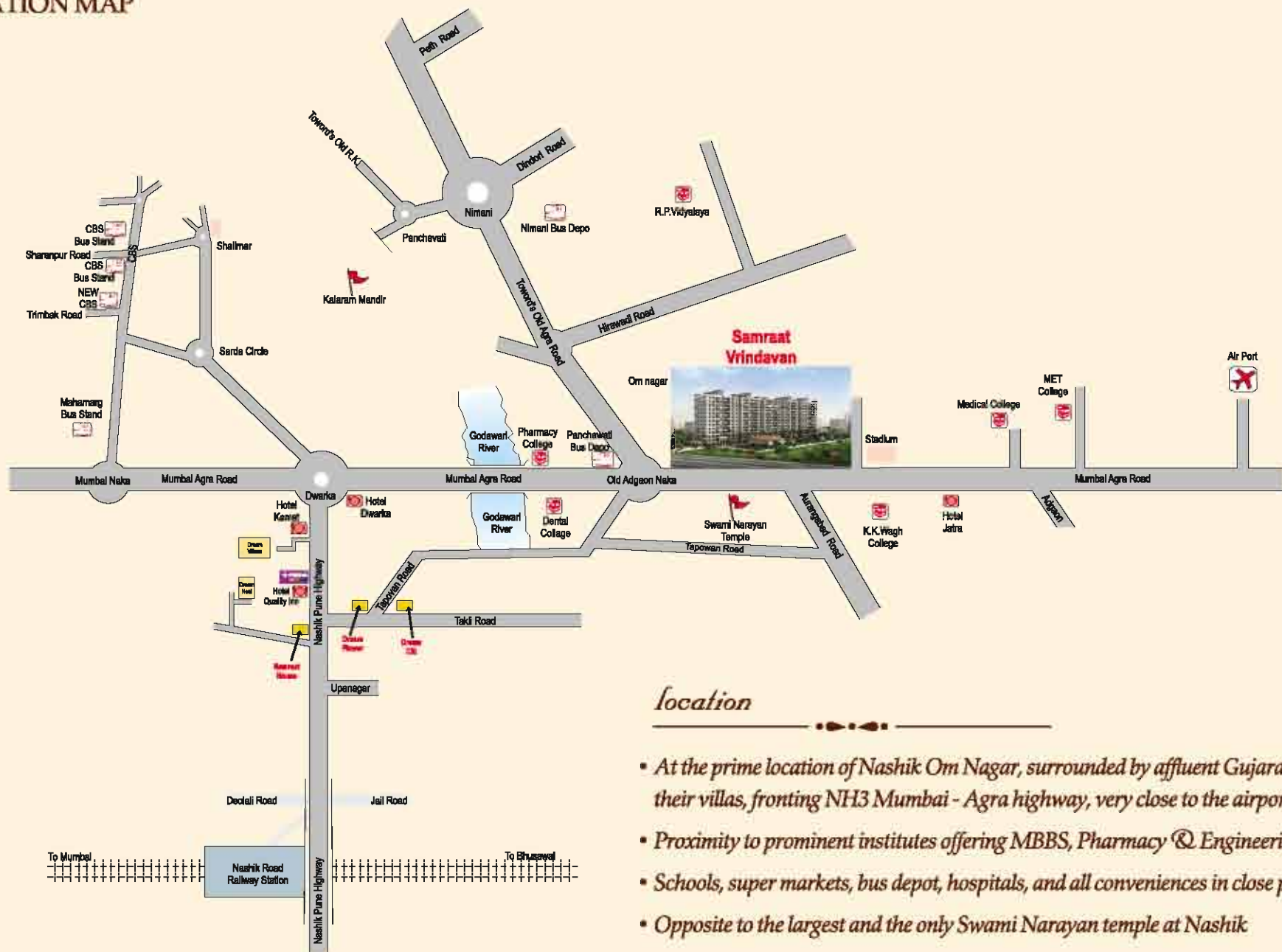
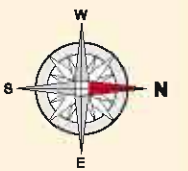
*Swagatam.*

*Inspired by the celestial lifestyle of Vrindavan, comes a residential paradise in Nashik of 2 and 3 BHK Terrace apartments. A lifestyle created around the luxuries of your apartment, it takes you to the time and period of Vrindavan under the grace of Lord Krishna.*

*Here the breeze breathes divinity, water soaks in enlightenment of the soul and light drenches in chastity of truth. With the flora and fauna, authentic to Vrindavan, along with the environ as the divine city itself, your everyday life will get nurtured in the lap of peace, divinity and spirituality. Awaken your inner self. Welcome to the home of the divine. From the entrance gate to Muktangam- the open garden, all chant the eternal saga of love between Krishna and Radha.*



LOCATION MAP



*Location*

- At the prime location of Nashik Om Nagar, surrounded by affluent Gujarati families and their villas, fronting NH3 Mumbai - Agra highway, very close to the airport
- Proximity to prominent institutes offering MBBS, Pharmacy & Engineering education
- Schools, super markets, bus depot, hospitals, and all conveniences in close proximity
- Opposite to the largest and the only Swami Narayan temple at Nashik



|| *Dakshin Dwar* ||  
The Grand Entrance

*Beyond this gate what you meet is serenity and beauty.  
Your soul realizes life and your life realizes God.*

*Welcomed by meticulously crafted idols of Lord Krishna and Radha, you step into the lifestyle of tranquility and from here starts your journey of realizing the soul. The Enchanting Samraat Vrindavan waits to take you to the world of Lord Krishna that shows you a new way of life.*

*Spirituality is the manifestation of knowledge already existing in human beings. Our duty is to be with the divine and live with a sanctified soul.*



|| *Mangal Karyalaya* ||  
The Ceremonial Hall / The Club House



*The goodness of a holy ceremony is in the presence of the divine.*

*Divinity of the Lord. Divinity of the holy being.*

*Celebration was a central part of Vrindavan. Every ceremonial event used to be hosted with purity of heart and joy of the soul.*

*At the ceremonial hall here at Samraat Vrindavan auspicious celebrations like a small marriage party, engagements, birthdays and more can be hosted with joy in the presence of the all divine Lord Krishna.*



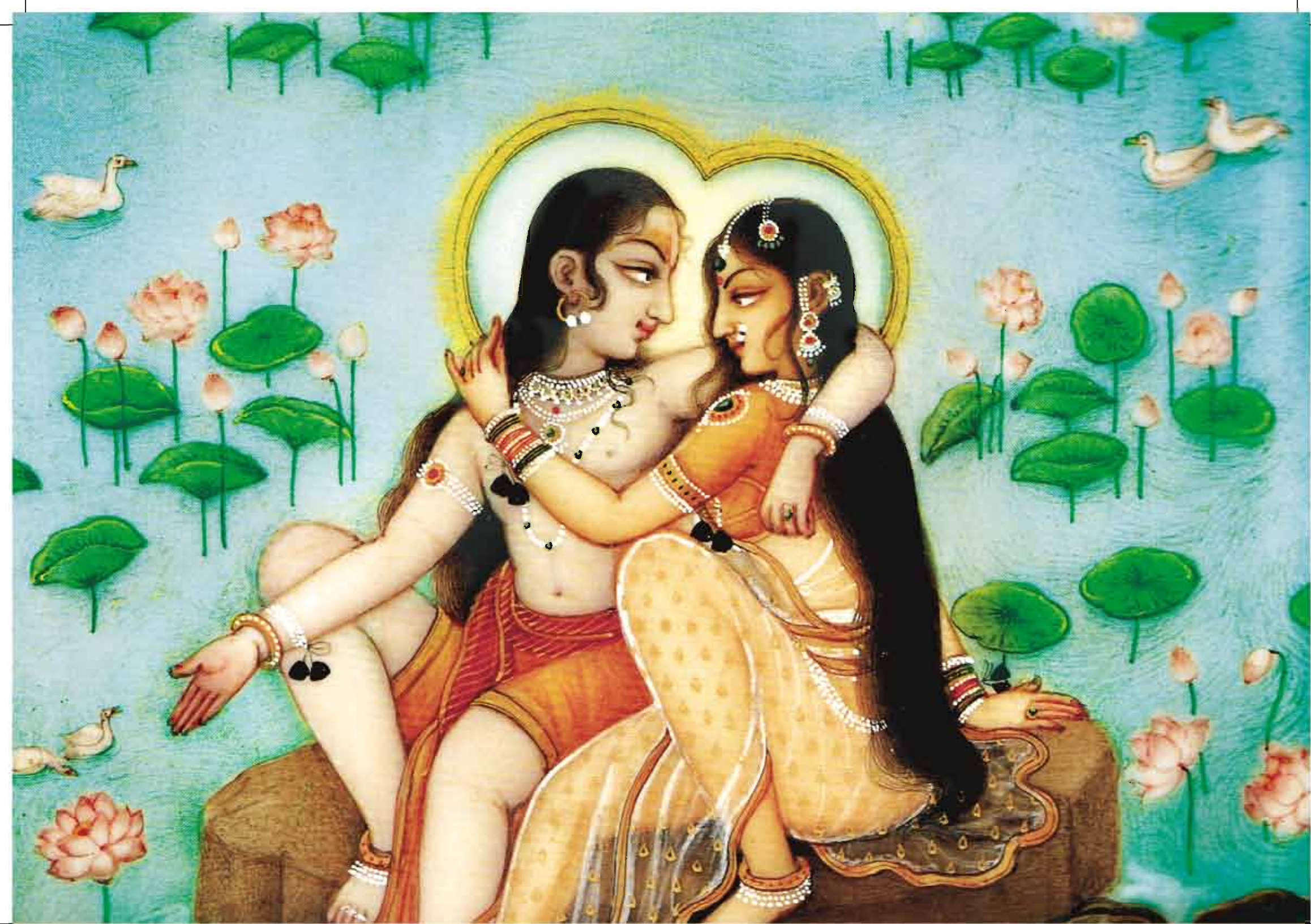
## || *Samarpan* ||

The Radha Krishna Temple

*When you lose yourself to the hands of God, is the time when you find yourself within you. It' s not devotion but self-realization.*

*Where the senses don' t think, see, hear or feel anything other than Lord Krishna, is called Samarpan. ' Hare Krishna' is a world in itself, a phrase that encompasses the world within. And with it the soul starts living and not just existing. Realization of truth and life is accomplished here.*

*Drench yourself in the praise of the Lord and surrender your soul to the nurturer of the universe in the temple at Samraat Vrindavan. Now imagine the temple in the middle of the Kamal Kund. As you worship your senses waft and float in the devotion of the Lord. Set in north-east direction as per vastu, the temple also has a marvelously crafted idol of Radha and Krishna. It' s here where you surrender yourself to him and he reveals the universe within you.*



## || *Kamal Kund* ||

The Exotic Pool



*The humble, precious and pure form of life shall take the soul upstream near the Lord.  
The beauty is in its calm and stillness.*

*Vrindavan at the time of Lord Krishna was soothed by the perennial waters of river Yamuna which was a part of the daily life of people. The Radha and Krishna love saga also unfolds at Vrindavan and the banks of river Yamuna as part of his "leela".*

*Lined up with lotus, the crystal clear water becomes divinely exotic. It's the perfect blend of purity and beauty. As you relax by the "Kamal Kund" the state of mind attains heightened spiritual grounds.  
Relax, rejuvenate and relive life at Samraat Vrindavan.*



|| *Pushpa Vatika* ||  
The Lush Garden



*In the Kingdom of Krishna, where love is the only passion.*

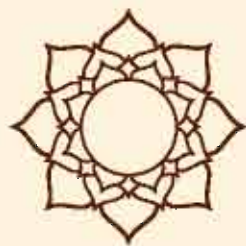
*Where flowers stand as the strongest message. From the Divine... with Love.*

*The landscape of Samraat Vrindavan is be-jeweled with the message of love from Lord Krishna.  
Where the Rose, Champa, Jasmine, Mogra and the likes, spread the message of love with fragrances  
that reach the soul and calm the earthly senses to peace.*

*The soul feels the spiritual existence of life in every breath. It's the Vrindavan, where the lord dwells.*



|| *Chandan Vihar* ||  
The Vedic Therapy Centre



*When nature shares its power to heal not just spiritually but also physically,  
it's the soul that gets healed.*

*Herbal therapy is what the traditional treatment of ailment was; it was not about curing but healing.  
Health care through herbal therapy is revived as a practice of treatment at Samraat Vrindavan with the  
help of the Vaidh and experts in health care.*

*Life here shall be healed by the power of herbs while the soul heals with peace by the grace of  
Lord Krishna.*



## || Vyayamshala ||

The Gymnasium



*A healthy body shelters a healthy mind. And it's here that the Lord shall  
reside in peace and harmony.*

*Good health was at the roots of Vrindavan, where Balaram too accompanied the greatness of the Lord  
himself. A well structured and maintained body is the temple of the Lord. It's the health of a body that  
supports a healthy mind.*

*At Samraat Vrindavan, a well equipped gym called the Vyayamshala is all poised to keep your health in  
its perfect form and shape. Give Lord Krishna the perfect and healthy space within to reside.*



|| *Gyaan Vihar* ||

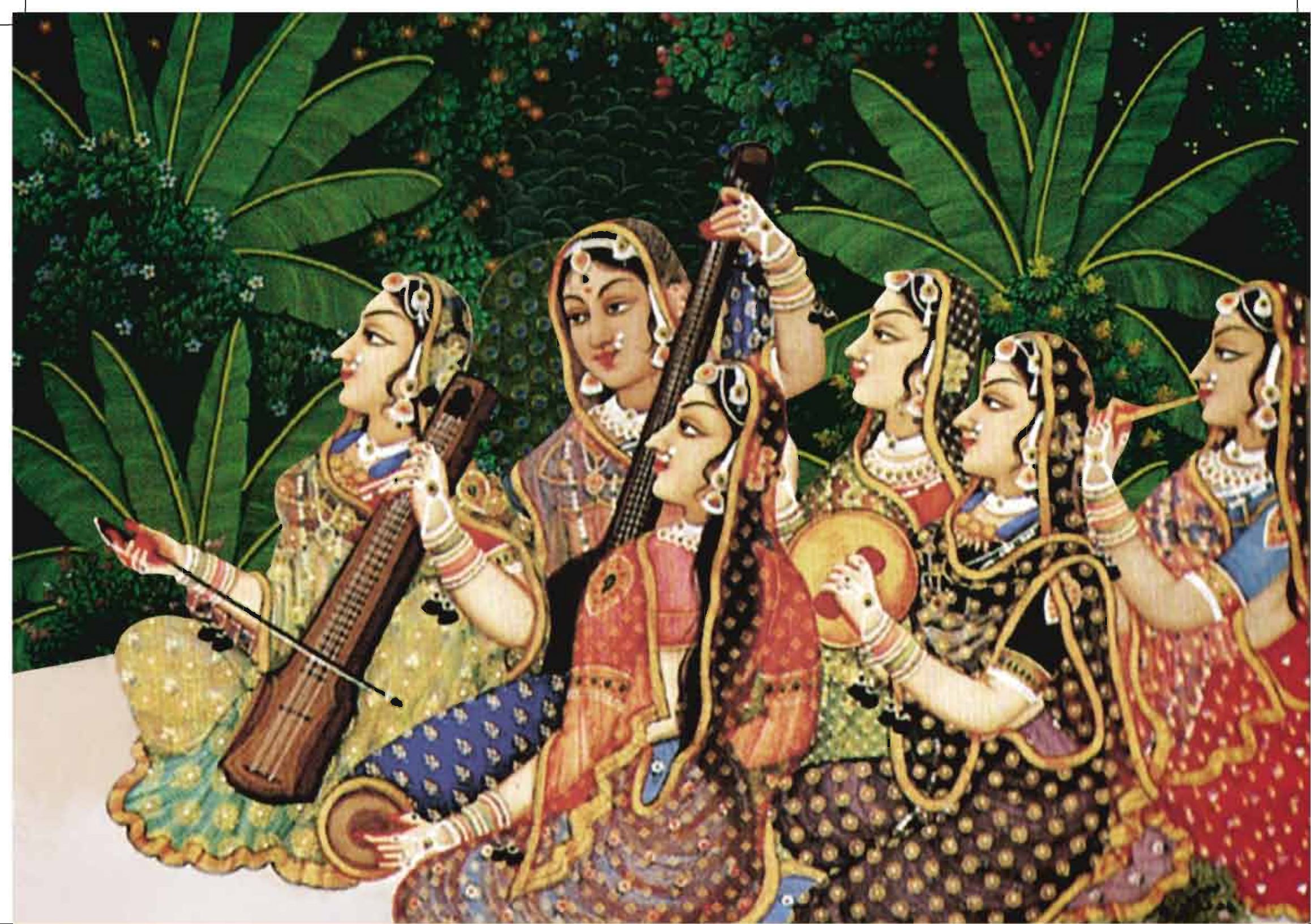
The Library



*Knowledge is the nourishment of the mind which holds the fruits of enlightenment.  
And the Lord is realized.*

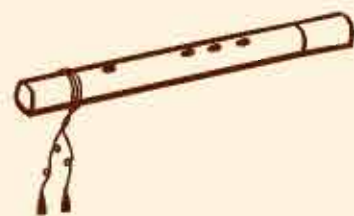
*At a time when the pandits walked as master philosophers, Vrindavan cherished and flourished under  
the tree of knowledge which was Lord Krishna himself.*

*Samraat Vrindavan, hosts elaborate spread of books on the life, time and philosophies of the Lord.  
Also featured is an LED TV that will air Sanskar, Aastha and other devotional channels. Every evening  
from 6 – 7 pm an hour of Gita Pravachan will be showcased to impart the truths of life.*



## || *Sangeet Kutir* ||

The Music Hall



*Its music in the breeze, in the ripple on the water, in the resonance of the temple bell  
and amongst all is the melody of the flute played by Lord Krishna.*

*The music hall at Samraat Vrindavan will praise the Lord as the professional masters of Bansurivadan  
play the flute. The tunes that summoned Radha from any corner of the village with passion will soon be  
for you to learn from the masters in this hall.*

*Just imagine a time when Bhajan, Kirtan and Bansurivadan come together to light up an evening  
of devotion and inner joy.*



## || *Nrityangan* ||

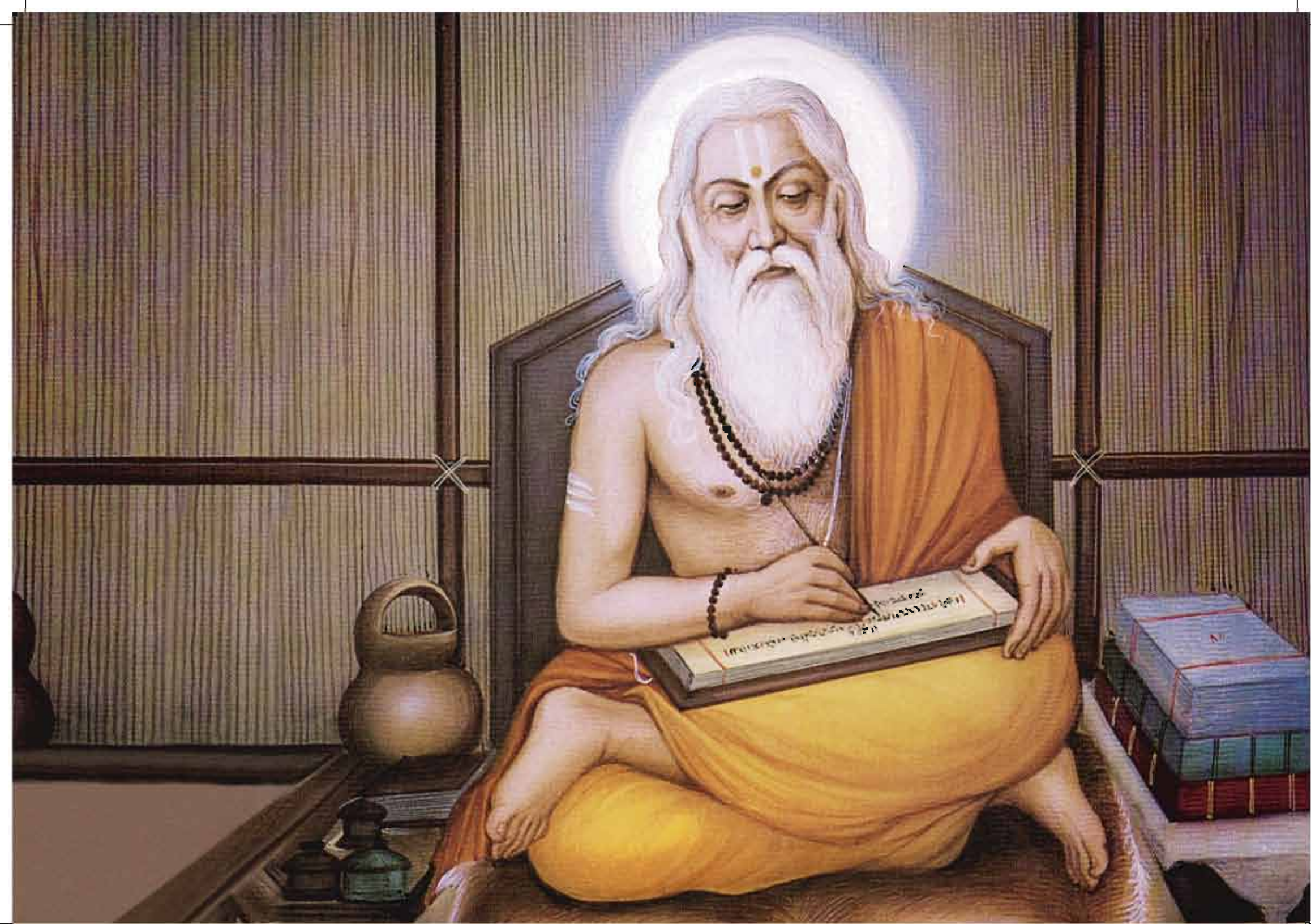
The Amphitheatre



*To dance means to be new, to be fresh at every moment.  
As though one has just felt God within and around.*

*The realization of Lord Krishna is never complete without dance and other forms of art. The "Gopala" rearer of cows was also known for his active participation in dance with the gopis which is a practice till date in Vrindavan.*

*At Samraat Vrindavan, the amphitheatre is all set to host numerous cultural events for social cultural gathering and to praise the Lord as well. Art is the boon that holds us close to the almighty, the soul leaps with joy as God sees our love for him.*



## || *Sant Niwas* ||

The Address for Saints and Gurus



*One who holds your hand and brings you to a life divine and without his presence realization of divinity is not attained. Serve your Guru.*

*It's the Saints and Gurus who walk the earth that elevate human understanding of the Lord.*

*Being in the shadows of the Guru is a blessing in itself. When the Gurus stay close to you they need special care and attention. At Samraat Vrindavan we take care of that too. Specially designed and spacious living spaces with kitchen for the Saints and Gurus, who come to stay along, adorn life and the way of life here. Be in the shadows of great souls.*



## || *Anubhav* ||

The Musical Experience from Garden to the Lobby



*The heart revives with the sweet melody of the flute wafted by the calm breeze that makes the soul restless to see the lord.*

*The enigmatic and enchanting power of the tunes, arising from the banks of river Yamuna is now with you at Samraat Vrindavan. Tunes that hypnotized one and all since ages will now soothe your soul from the landscaped garden to the corridors of your residence. From the lobbies to the lush garden, it's the sublime melody of love and life everywhere.*

*Wherever you are the divine tunes of the magnetic flute remind you of the presence of Lord Krishna around. Always with you and close to your soul.*



## || *Anand Kutir* ||

The Pleasant Residences



*There's nothing as pleasant as coming home, for that's where your heart is, your family is. And that's where the Lord is too.*

*With an external experience of sublime yet magnetic divine presence you step into the pleasant, comfortable and relaxed life of your home. Pleasant with its views of the flora, fauna and water bodies; comfortable with a spacious lifestyle and relaxed with the presence of the divine always around. Peace is the lifestyle where the body, mind and soul, all surrender to Lord Krishna.*

*With 2 and 3 BHK Terrace apartments and penthouses the Anand Kutir at Samraat Vrindavan resonates peace and serenity. Open and airy living spaces with puja rooms where you need to live for the true realization of the divine. Massive terrace attached to your abode, gives space to life and peace of mind.*

# || Saransh ||

## The Project at a Glance

*Samraat Vrindavan is a unique and first devotional residential project at Nashik. Where you feel Lord Krishna in everyday life and he, the nourisher of the universe wipes all your pain away and promises a peaceful and blissful lifestyle at his grace.*

### Elevation

- 12 storied high rise surrounded with huge garden on the east and very low height villas all around for fantastic view with a lot of breeze and air
- Five towers offering 232 units of 2BHK, 3BHK, 2 and 3 BHK pent house with four flats per floor
- 1175 sqft onwards premium living space

### Recreational Amenities

- 2500 sq ft club house with multipurpose hall for mini ceremonies and fun parties
- 1200 sq ft gymnasium to keep you in good health & form.
- Library room with books on Lord Krishna and other philosophies.
- Yoga & meditation room to bring you peace, & serenity
- Kids play area with playing equipments
- An ayur spa with vedic herbal therapy and traditional treatments for the healing of body, soul & mind
- Amphitheater for cultural events

### Devotional Amenities

- Layout based on ancient vastu shastra
- Temple of Lord Krishna & Radha in north east, surrounded by a beautiful lotus pond to surrender your soul and seek solace in the divine.
- Transformer on the south east, garden on the east & building on the west as per vastu shastra
- An LED TV in the library showcasing the Sanskar, Aastha and other devotional channels continuously with Geeta pravachan every evening from 6 - 7 pm to impart the truths of life
- A music room for bhajan & kirtan and other spiritual discourses
- Specially designed and spacious living space with separate kitchen for the saints and gurus

### Security

- 10' compound wall surrounding the premises, with 5' brick wall and 5' fencing
- One main entrance gates with security for the premises
- 24 hours regular security personal
- CCTV camera at entrance gate and entrance lobby for surveillance
- Dedicated intercom linking the main gate and each residence
- Enhanced project security through monitored and recorded movement
- Modern fire fighting systems
- Seismic resistant building design

### Standard Amenities

- Planned greenery around the campus of medicinal herbs like aloe vera, tulsi, etc
- Covered / open parking space offered to each unit
- Two high speed elevators in each building with battery back up
- A lush manicured garden with automatic sprinklers with drip irrigation
- Individual mail box to each unit
- Paved internal roads
- Water management with water harvesting facility
- Ready to use telephone with broad band connectivity in every flat
- Provision for cable TV
- Anti termite treatment to plinth
- Sanitation facilities for drivers
- LPG connection for each unit
- Society office

## Experiential Amenities

### Living & Dining

---

- Elegant main door with veneer style laminates
- Branded S S fittings and hinges on the main door
- Imported vitrified flooring in living & dining room
- Jindal aluminum anodized sliding windows with stainless steel net
- Highly finished emulsion paint in living and dining rooms
- Branded modular electrical fittings and concealed high quality wiring
- All window sill in granite/ green marble/ vitrified tile
- Night latch to main door
- TV & telephone points in living room
- Aluminum sliding door in living room terrace
- Inverter point in all rooms

### Kitchen

---

- Modern kitchen layout for the best comfort
- Vitrified flooring
- Extensive electrical layout for convenient use of kitchen equipments & appliances
- Parallel/ L- Shaped platform with granite top
- Quartz stainless steel kitchen sink with drain board
- Provision of water purifier and exhaust fan
- L.P.G gas detector in every kitchen
- Glazed dado tiles up to lintel level in kitchen and up to 3' in wash area
- Store room in every kitchen
- Utility space for washing Machine /dish washer & drying clothes
- Beautifully designed space for mandir

### Bathroom

---

- Neat toilet designs for best space utilization
- International quality C.P. fittings and imported high quality sanitary ware
- Designer glazed tiles upto 7'
- Anti skid flooring
- All bathrooms with internationally acclaimed CPVC non - clogging chlorine treated plumbing material
- Common wash basin in the passage area
- Concealed plumbing
- Geysers provision

### Bedrooms

---

- Imported Rich Toned Laminated Wooden flooring in Master Bedroom
- Vitrified flooring in other bed rooms
- All doors with Veneer style laminate attached on front Side & paint on other side with branded hinges
- Mortise lock to bedrooms
- Branded Modular electrical fittings and concealed high quality wiring
- Highly finished Emulsion paints in every bedroom
- TV & telephone points in all bed rooms
- All window sill in granite/ green marble/ vitrified tile
- " Jindal " Aluminum Anodized Sliding Windows with Stainless Steel Net

*|| Night View at Samraat Vrindavan ||*



*|| Club House ||*



|| *Panoramic View of Samraat Urindavan* ||

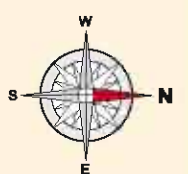


Site Plan



*Samraat Urindavan*

Om Nagar, opp. Swami Narayan Temple, Mumbai-Agra Highway Front, Nashik



|| Samarpan ||  
THE RADHA KRISHNA TEMPLE



|| Temple & Landscape ||



### Typical plan of a 3 BHK - 1st, 3rd, 5th, 7th, 9th and 11th Floor Plan



Wings: Krishna & Kanhaiya

### Typical view of a 3 BHK unit ( Odd Floor Plan )



Typical plan of a 3 BHK- 4th, 6th and 10th Floor Plan

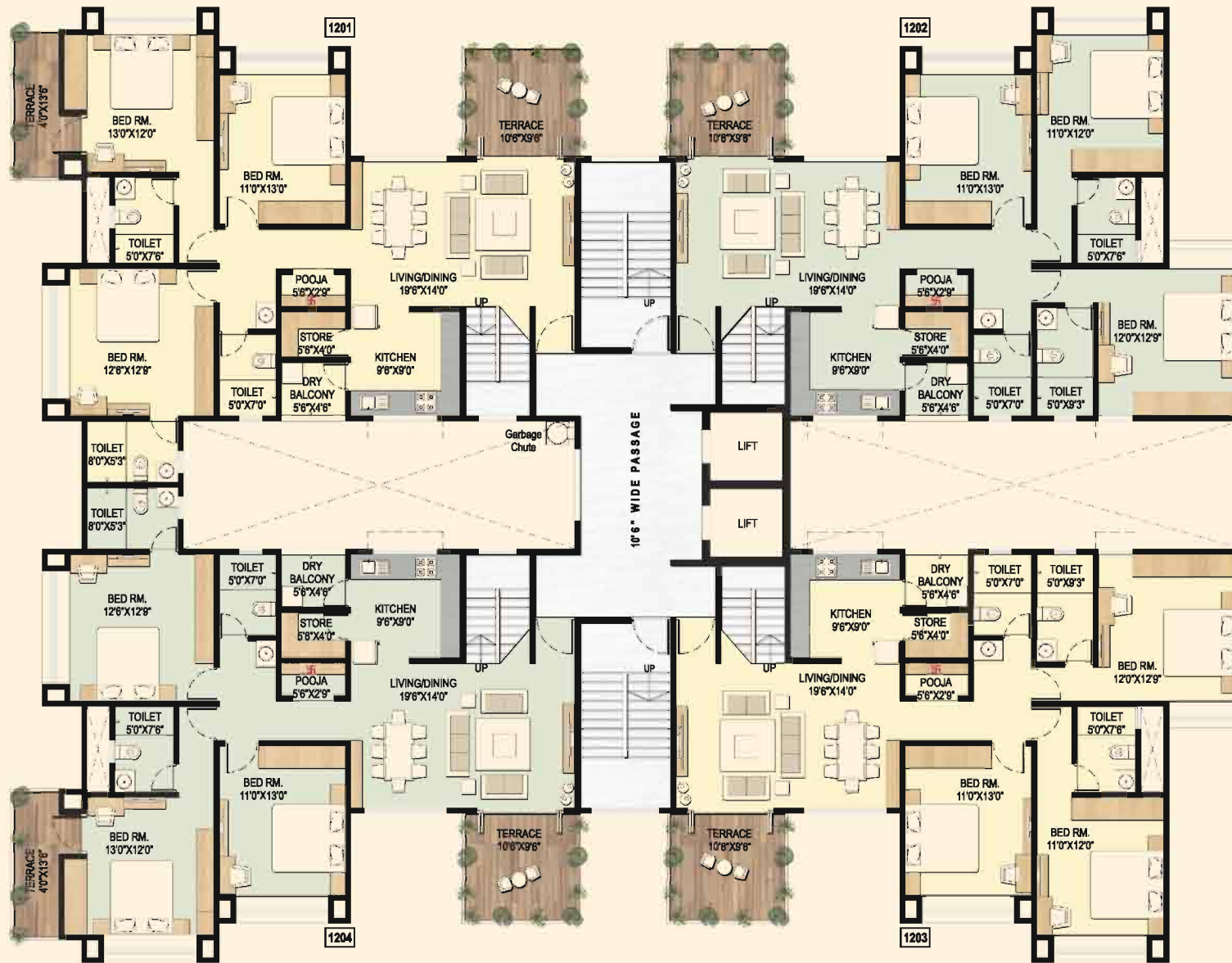


Wings: Krishna & Kanhaiya

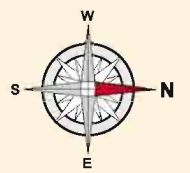
Typical view of a 3 BHK unit (Even Floor Plan)



### Typical plan of a 3 BHK- Pent House 12th Floor Plan



Wings: Krishna & Kanhaiya



### Typical view of a 3 BHK Pent House



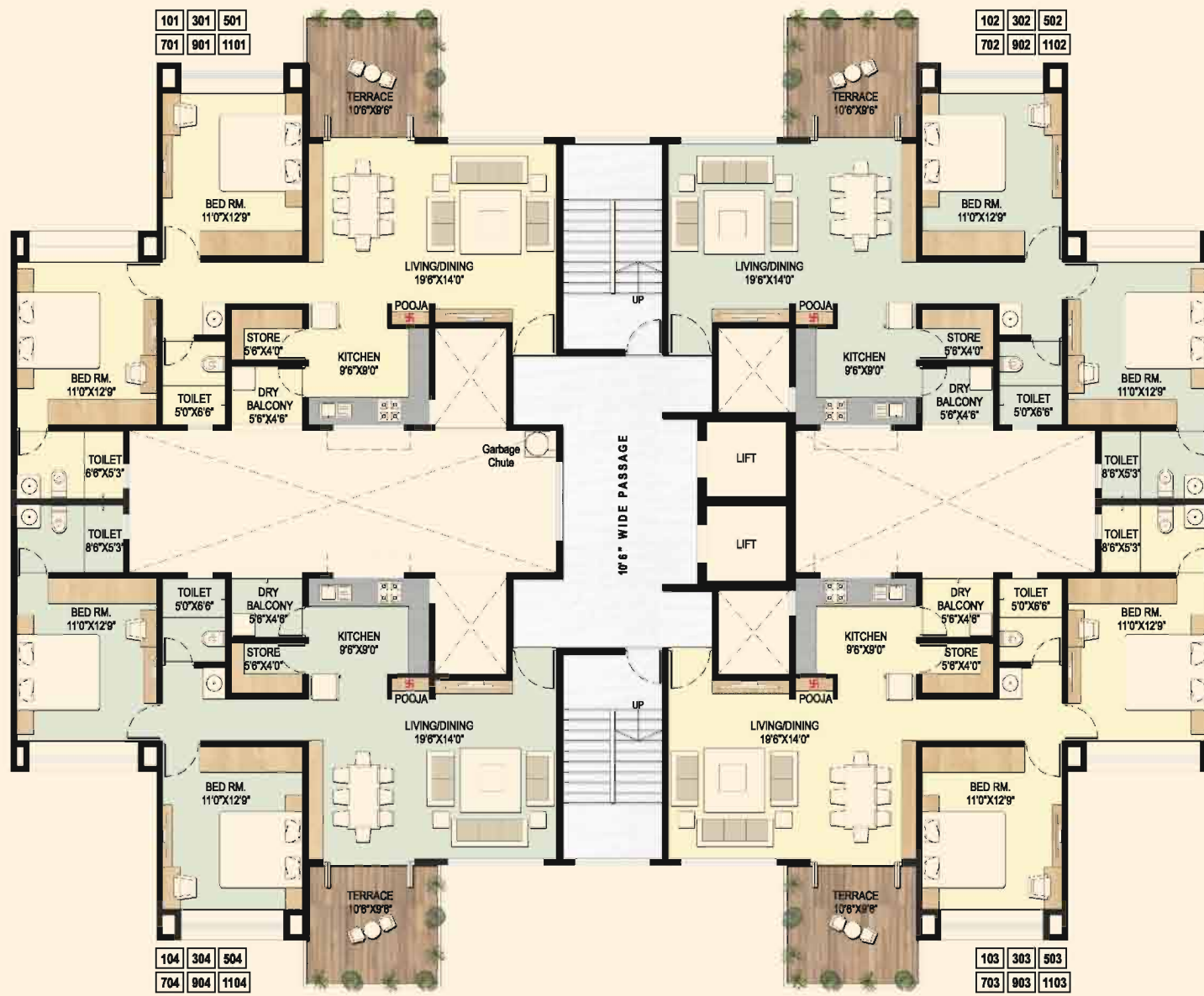
|| Children's Play Area ||



|| Gazebo for Chit Chat ||



Typical plan of a 2 BHK - 1st, 3rd, 5th, 7th, 9th and 11th Floor Plan

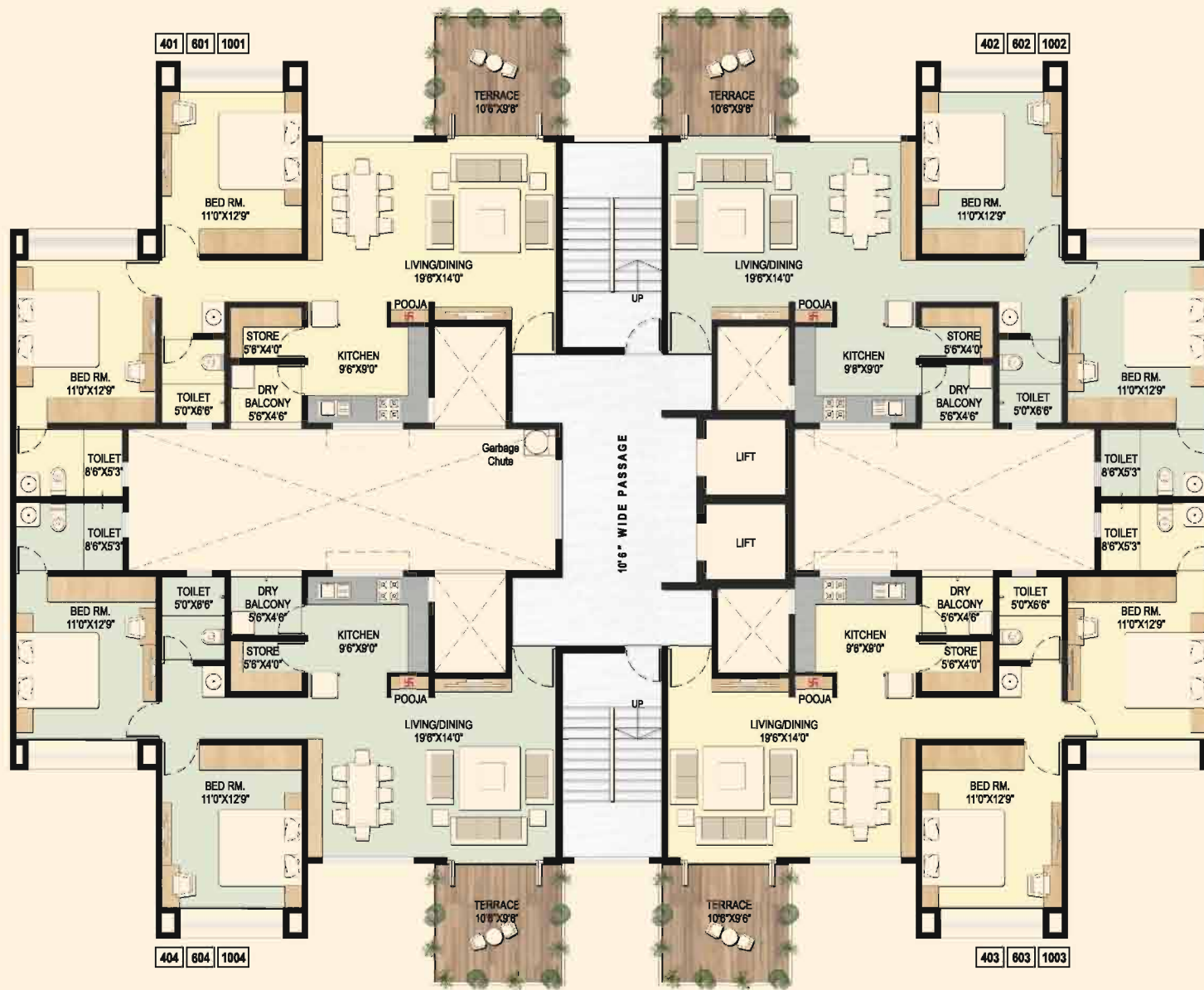


Wings: Keval, Keshav & Kanha

Typical view of a 2 BHK unit ( Odd Floor Plan )



## Typical plan of a 2 BHK - 4th, 6th and 10th Floor Plan

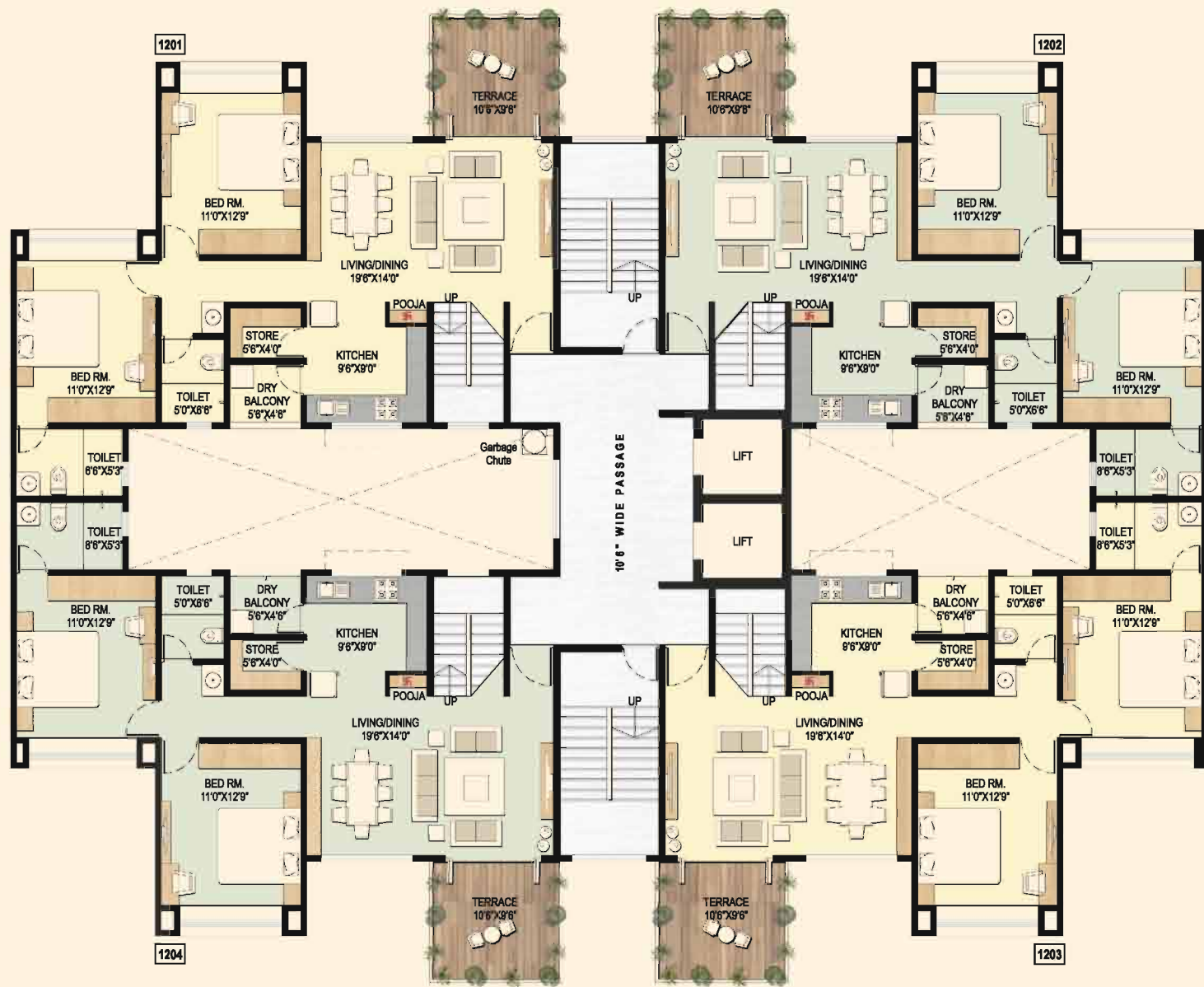


Wings: Keval, Keshav & Kanha

## Typical view of a 2 BHK unit ( Even Floor Plan )



## Typical plan of a 2BHK- Pent House 12th Floor Plan



Wings: Keval, Keshav & Kanha

## Typical view of a 2 BHK Pent House



# SAMRAAT VRINDAVAN

A joint venture of  
Samraat Group & D.S.P Enterprises

## THE DIVINITY CALLED VRINDAVAN

*Welcome to the land of transcendental bliss where everything speaks the glory of Lord Krishna and provides his grace to all the inhabitants residing in his heavenly abode, Vrindavan at Nashik. Offering the peaceful and poised 2 and 3 BHKT residences with luxury and elegance in the form of classic amenities, Vrindavan creates the similar ambience as well as the experience of being with the Lord.*

*Time to live under the grace of Lord Krishna. Time to experience Vrindavan.*



Construction | Infrastructure | Hotels

MEMBER



MEMBER



### SAMRAAT- POWER OF IMAGINATION

*Over the last 13 years, the power of imagination is what has helped Samraat Group create over 40 defining landmarks and award winning projects in Nashik. Spread across 15 lac sq ft comprising of residential and retail spaces in Nashik, the group is leading the way with thought, innovation, commitment, value and high standards of quality. Samraat Group chooses the environmental friendly way to live and work. Being a member of Indian Green Building Council (IGBC), Samraat builds environmentally responsible, sustainable, energy efficient, healthy and safe homes. While enjoying the strong brand equity in the real estate realm, Samraat has to its credit many projects that have redefined the concept of living standards and changed the skyline of Nashik forever.*

*As a leader in the real estate industry in Nashik, Samraat is the only construction company in the city to have acquired*  
*:ISO- 9001:2000 for Quality Management System*  
*ISO- 14001:2004 for Environment Management Systems*  
*OHSAS 18001:1999 and OHSAS 18001:2007 for Health and Safety Assurance Management System*  
*SA: 8000:2001 for Social Accountability*

*The Group has also been awarded with the prestigious CRISIL rating of SME II for its high financial status and transparency in finance-related matters.*

*Mr. Gupta' s consumer-centric approach has earned him the laurels from the industry and the prestigious Bharat Nirman Ratna Award from New Delhi & also the best Building Award for Dream Citi.*

*We believe, ' If mind can think and heart can believe, imagination can achieve' .*

## || Credits ||

<i>Architecture Design</i>	: Ar. Sagar Kabra (Nashik) & Samraat Design Tech (In house team of Samraat Group, Nashik)
<i>Structural Consultant</i>	: Sandip Varma, (Nashik)
<i>Legal Advisor</i>	: Adv. Jayant Jaibhave, Nashik & Adv Mrunal Tambe
<i>Interior Designer</i>	: Shruti Gupta, (Nashik)
<i>Landscape Design Consultant</i>	: Ar Apeksha Kute
<i>MEP Consultant</i>	: Anil Verma (Mumbai)
<i>Chartered Accountant</i>	: C.A. Natesh & Associates, Nashik
<i>3D Visualiser</i>	: Z- Axis Media Solutions, Pune
<i>Communication Agency</i>	: Thoughttrains, Mumbai