

RERA No.: P-IND_25-5789



Emerald

C⁺RESCENT

Live the precious

RERA No.: P-IND_25-5789



Emerald

CRESCENT

Live the precious





Emerald

Crafting Imagination Into Realty
A VINOD AGARWAL ENTERPRISE

GIVING LUXURY A MEANING THE EMERALD WAY!

Since the first blueprint, we (Emerald Developers) have been redefining the meaning of elevated lifestyle by uniting unique artistic designs with practical elegance. Our studios are places where like-minded people come together to shape joy and togetherness in brick and mortar.

We don't take pride in envisioning a modern architecture, or that we look into every nano inch of the space with eagle's eyes, or that we create a unique blend of luxury and simplicity; but our pride is the smile on our customers' face when they come alive with pure bliss while looking at their manifested space taking shape of reality.



Mr. Vinod Agarwal
Chairman
Emerald Developers



Mr. Tapan Agarwal
CEO
Emerald Developers

“

Emerald Developers has always strived to deliver exceptional line-up of luxuries that complement the tapestry of your lifestyle. With Emerald Crescent, we are now delivering the unexpected. A blend of non-materialistic luxury that will compliment your soul's lifestyle; a blend of refined living and lush greenery.

Guided by the nature, Emerald Crescent offers you peaceful surroundings that transcend you in a profound state of inner calmness, a state where you become one with nature.

Thoughtfully designed landscape gardens weave through the community, creating a peaceful sanctuary where nature and architecture coexist in perfect harmony. Beautifully crafted community nodes encourage human connection, shared experiences, and a sense of belonging. Every element of the layout reflects a commitment to aesthetic excellence, blending organic beauty with modern elegance to create an environment that is both inspiring and nurturing.

”



AN EXCLUSIVE ENCLAVE WHERE LUXURY FINDS ITS PERFECT SETTING

Emerald Crescent, a signature plotting project by Emerald Developers, redefines first impressions with its iconic entrance gate and sweeping crescent-shaped spine road. This unique central avenue, flanked by meticulously planned plots, is adorned with lush, thoughtfully landscaped gardens and ornamental plantations that set a serene tone throughout the development.

Elegant plazas and gathering nodes punctuate the layout, offering both charm and functionality.

The design philosophy reflects a harmonious blend of modern aesthetics and natural elegance, crafting an environment that's not just liveable, but deeply inviting. Crescent stands as a bold architectural statement in premium plotted development.



DELIVERING
 THE EXPECTED IS GREAT.
 IT'S THE UNEXPECTED
 THAT MAKES THE DIFFERENCE.



BEYOND PHYSICAL SAFETY,
TRUE PEACE OF MIND COMES FROM
A DEEPER SENSE OF MENTAL SECURITY.

Emerald Crescent is more than just a gated compound, it is a sanctuary designed to protect and uplift. With comprehensive security measures shielding residents from external disturbances, it also offers a tranquil environment embraced by nature. Lush green spaces, calming landscapes, and thoughtfully curated surroundings foster a serene atmosphere, making Emerald Crescent not just a secure address, but a haven where the mind can truly rest.



ECO GYM



CRICKET PITCH



SCULPTURE



CLUBHOUSE ACCESS



GAZEBO



WATER FOUNTAIN



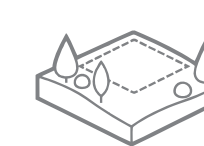
KIDS PLAY ZONE



MINI AMPHITHEATRE



CONNECTIVITY
(Less than 500m
from main
AB Bypass Road)



MORE THAN 70%
PLOTS ARE
GARDEN FACING



TENNIS COURT



OPEN SITTING AREA



DEFINING BOUNDARIES, ENSURING SECURITY

The elegant plot boundary wall of Emerald Crescent stands as a symbol of exclusivity and safety, crafted to blend architectural excellence with serene greenery, offering unmatched peace of mind and a welcoming ambiance.



DESIGNED FOR THOSE WHO SEEK
NOT JUST A HOME, BUT A LIFESTYLE
THAT ELEVATES EVERY MOMENT
INTO AN EXPERIENCE OF
TRANQUILITY AND JOY.



THE NIGHT VIEW



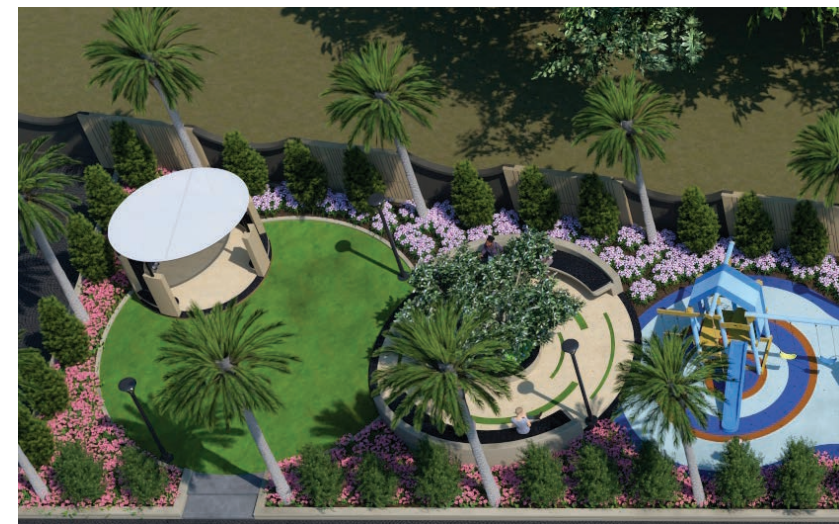
A PERFECT MIX OF THE MODERN
AND THE CLASSIC,
TO HELP YOU UNWIND IN STYLE

AMENITIES

- | | | |
|--|--|--|
|  <p>LUXURIOUS ENTRANCE
PLAZA WITH 100 FT WIDE
ENTRANCE</p> |  <p>BUILD ON THE THEME OF
CONTEMPORARY ARCHITECTURE</p> |  <p>MORE THEN 16 GARDENS</p> |
|  <p>HIGH STRENGTH ROAD
WITH COBBLESTONE PATHWAYS</p> |  <p>MODERN THEM
STREET LIGHT</p> |  <p>UNDERGROUND WATER TANK
AND STP
UNDER GROUND ELECTRICITY</p> |
|  <p>HDPE WATER LINE
WITH ELECTROFUSION
FITTING</p> |  <p>COLLAR SPIGOT PIPES USED
FOR ALL CONCERNED SERVICES</p> |  <p>24X7 CCTV
CAMERA
SURVEILLANCE</p> |



AMPHITHEATER



GAZEBOS

SCULPTURES.



RUBBER GRANULE FLOOR

CENTRAL SPINAL CRESCENT-SHAPED ROAD



KIDS PLAY AREA

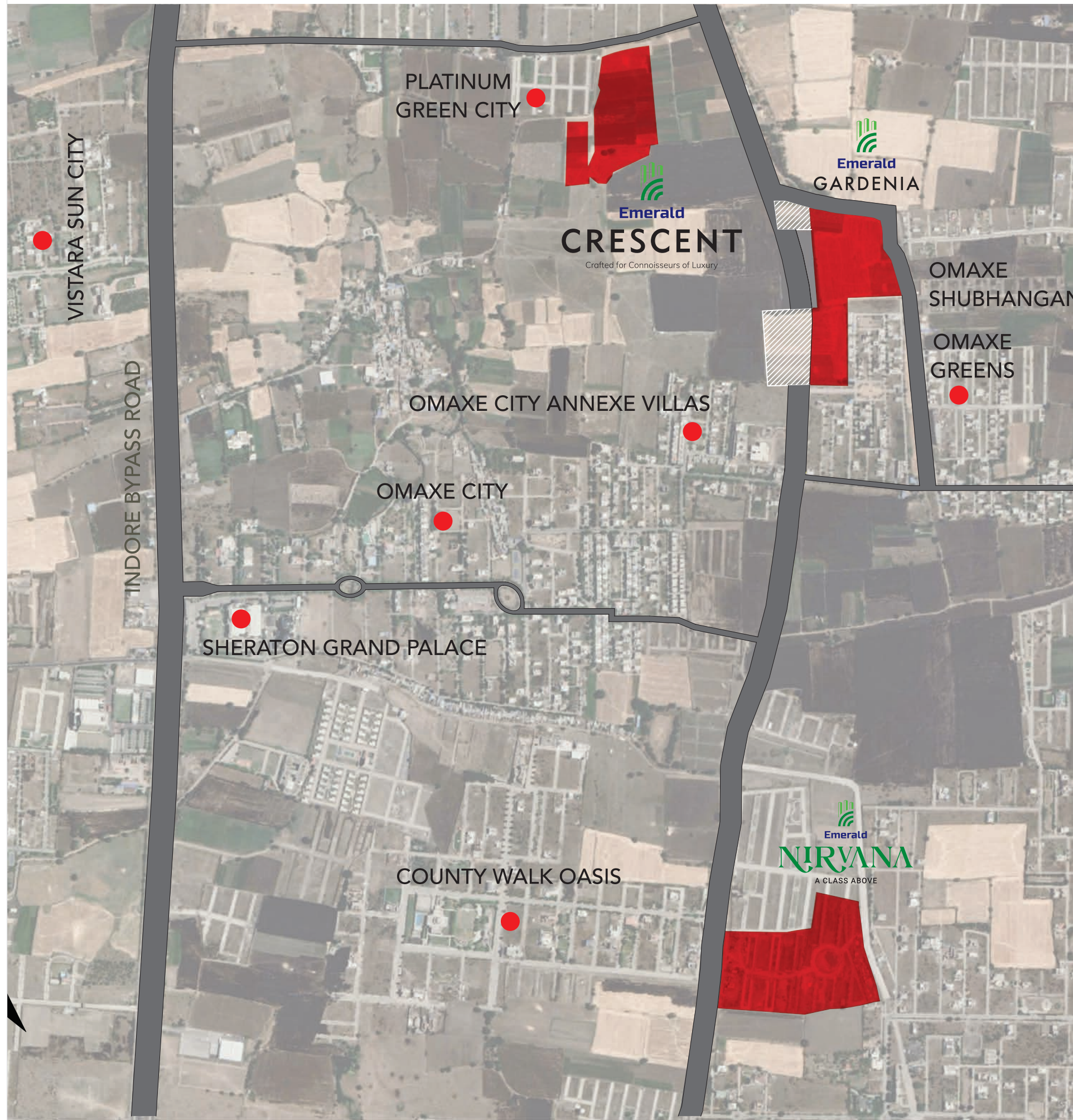
GARDEN WITH PATHWAY AND SITTING AREA



SUPER STUFFED
 GREENERY &
 MULTIPLE GARDENS



DISTINCTLY ADVANTAGEOUS LOCATION



CLOSE PROXIMITY

SCHOOL	Shishukunj DPS Emerald Height G.D.Goenka
HOSPITALS	Kokilaben Hospital Bombay Hospital
HOTELS	Sheraton The Park Marriott Radisson Blu
RETAIL	Phoenix Mall Best Price
CORPORATE OFFICE	C-21 Business Park



Pocket

RERA No.: P-IND_25-5789

A MEMBER OF
CREDAI
INDORE

A PROJECT BY:



Emerald

Crafting Imagination Into Realty
A VINOD AGARWAL ENTERPRISE

Site Address:

Land Khasra No.. 131/1/2, 134/1/3, 137/196/1, 137/196/2, 137/196/3/2, 138/2 and 138/3, Village Mayakhedi, Tehsil Kanadiya, District Indore (MP)

Corporate Office :

Agarwal House, 5, Yeshwant Colony, Indore - 452003 (M.P.)

Contact :

Mob.: +91-76106-76106

Email : contact@emeralddevelopers.com

Web: www.emeralddevelopers.com

PROJECT ARCHITECT
GENESIS DESIGN STUDIO

LANDSCAPE ARCHITECT
DEVILA LANDSCAPE

STRUCTURAL ENGINEER
PREKSHA ASSOCIATS

T&CP No.: INDLP20122412641 | Diversion No.: 0167/A-02/2025-25 | Development Permission : 2266/Colony Cell/2025


Emerald
AASHRAY
Elegance Redefined
RERA No.: P-IND-24-4705
VILLAGE SONWAY


Emerald
GATEWAY
Exceptional Living
RERA No.: P-SWR-24-4573
VILLAGE SULLAKHEDI


Emerald
GARDENIA
The Iconic Address of Luxury
RERA NO.: P-IND-23-4209
NEAR BYPASS, MAYAKHEDI


Emerald
NIRVANA
A CLASS ABOVE
RERA NO.: P-IND-21-3033
NEAR SHISHUKUNJ SCHOOL, JHALARIYA


Emerald
CORRIDOR
RERA NO.: P-IND-22-3659
NEAR MR -5 SUPER CORRIDOR


Emerald
ANUTHAM
RERA NO. P-IND-19-2293
NEAR BICHOLI MARDANA


Emerald
ANANT
RERA NO. P-IND-21-2925.
NEAR BICHOLI MARDANA

Disclaimer : Information and images herein are only indicative and in no manner binding on the Promoter. The Promoter reserves the right to alter, amend and/or vary the layout, plans, specifications and/or features under applicable laws without prior notice, reference or obligation. You are required to verify all the details, including area, amenities, services, terms of sales and payments and other relevant terms independently with the Promoter, prior to concluding any decision for any unit(s) in the said project.