

SPECIFICATIONS

Key Elements of Studio Apartment :

- Aluminum-encased windows and sliding doors with reflective glass.
- Recessed lighting together with full-size, wood-encased mirrors.
- Custom-designed, solid-wood built-in wardrobe closets, with integrated luggage and shoe racks.
- All internal areas are finished in a durable varnish.
- Imported, over sized tiles throughout entire floor area (except balcony).
- Built-in kitchen nook with quality, solid-granite counter top on all counters, and with kitchen and cooking utensils.
- Bright efficient bathrooms with shower.
- Provision for Broadband internet and Cable T.V.
- 2 sets of Quality curtains with internal lining.

Furniture & Fixtures include :

- 1 x 3-4 seater sofa
- 2 x living area ottomans
- 2 x bed side table with drawers (painted & lacquered)
- 1 x oak coffee table
- 3 x lamps
- 1 x side table for living area (painted & lacquered)
- 1 x desk (painted & lacquered) with light and desk chair
- 1 x custom TV stand with lazy-susan (painted & lacquered)
- 1 x queen size bed with headboard & recessed drawers for additional storage

Wide kitchen counter and ample cabinets
Stainless steel kitchen sink
2 x Designer Bar stools
Matching porcelain toilet and vanity sink set

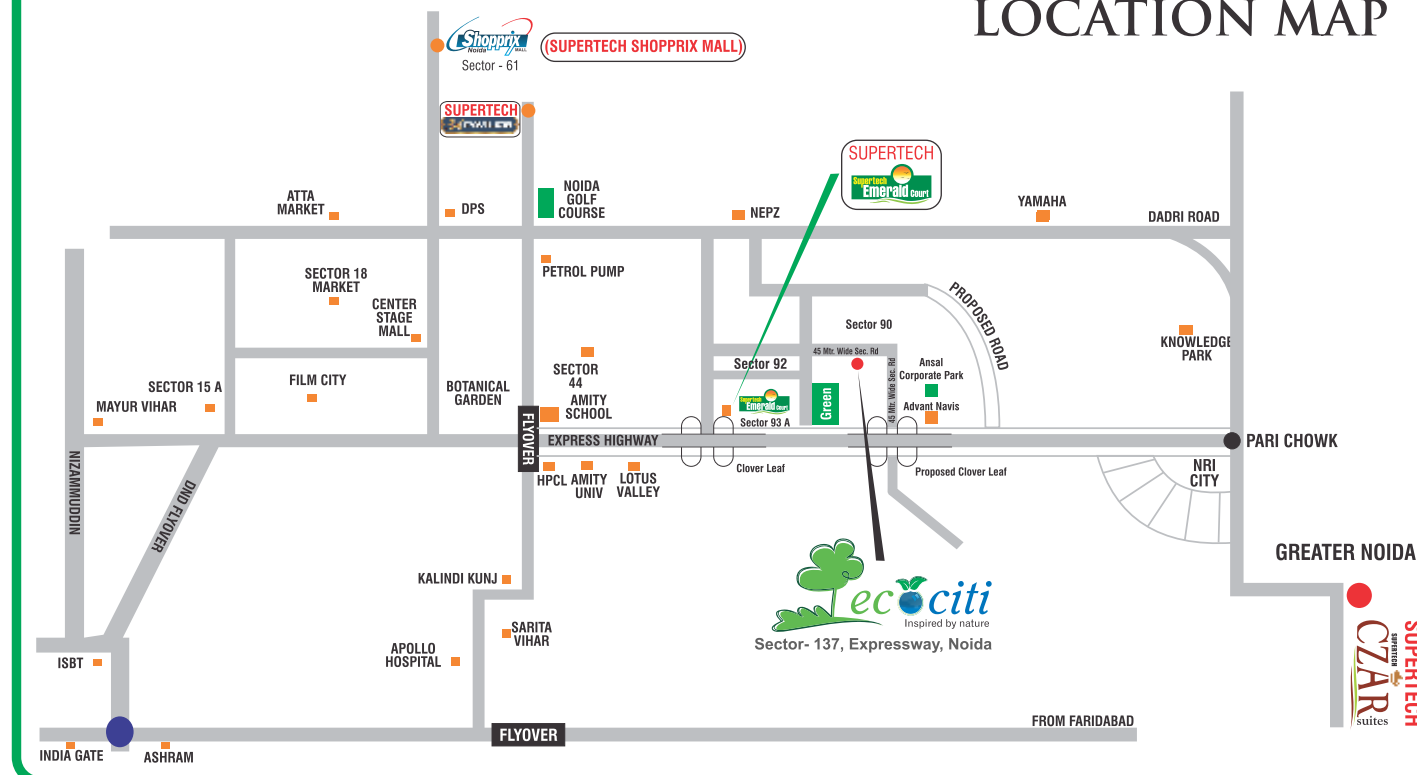
Appliances & Equipment include :

- 1 x 21" LCD Color TV
- 2 x remote-controlled split-type air-conditioner
- 1 x Full-size refrigerator
- 1 x Electric water heater
- 1 x Dual-burner LPG Gas Stove
- 1 x Microwave Oven
- 1 x Toaster
- 1 x Rice Cooker
- Plates, Bowls & Utensils

Other Equipment :

- 1 x Fire extinguisher
- 1 x Personal electronic safe
- 1 x Door Security Deadlock
- 1 x Sentry Safety Door Chain
- 1 x Security Peep hole for Entrance Door

LOCATION MAP



FULLY FURNISHED, FULLY SERVICED STUDIO APARTMENTS

AT INDIA'S FIRST ECO-CENTRIC RESIDENTIAL DEVELOPMENT



Site Office: Plot No. GH 03, Sector-137, Expressway Noida
Supertech House: B 28-29, Sector-58, Noida 201 307
E-mail: ecociti@supertechlimited.com • Website: www.supertechlimited.com • sms ECOCITI to 56677

ecosuites
fully furnished. fully serviced.

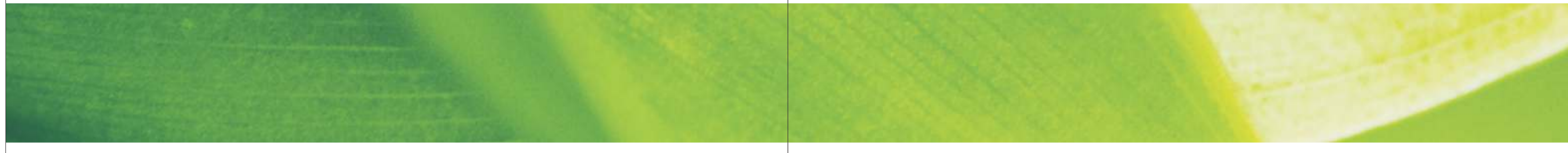
@ **ecociti**
Inspired by nature
Sector- 137, Expressway, Noida

TYPICAL PLAN OF STUDIO TOWER 2ND TO 20TH FLOOR



Live the way Nature wants you to

Committed to Eco-centrism, Eco-suites, Studio Apartments are designed for people who believe in making a difference. Part of India's first eco-centric development, these fully serviced and fully furnished apartments are perfect combination of space, aesthetics and design. Come, be a part.



Super Area: 410 Sq. Ft.



Super Area: 425 Sq. Ft.



Super Area: 440 Sq. Ft.



Super Area: 455 Sq. Ft.



2 BHK



Area - 890 Sq. Ft.
 • 2 Bedrooms • 2 Toilets • Kitchen • Drawing • Dining • 3 Balconies

3 BHK



Area - 1295 Sq. Ft.
 • 3 Bedrooms • 2 Toilets • Kitchen • Dining • Drawing • 3 Balconies

2 BHK



Area - 1082 Sq. Ft.
 • 2 Bedrooms • 2 Toilets • Kitchen • Dining • Drawing • 3 Balconies

3 BHK

Area - 1405 Sq. Ft.



• 3 Bedrooms • 2 Toilets • Kitchen • Dining • Drawing • 4 Balconies

1 Sq. Mtr. = 10.764 Sq. Ft.

3 BHK



Area - 1595 Sq. Ft.

- 3 Bedrooms • 3 Toilets • Kitchen • Dining • Drawing • 4 Balconies

3 BHK + SQ



Area - 1750 Sq. Ft.

- 3 Bedrooms • 3 Toilets • Kitchen • Dining • Drawing • 3 Balconies • Servant Room

3 BHK + Store



Area - 1505 Sq. Ft.

- 3 Bedrooms • 2 Toilets • Kitchen • Dining • Drawing • 4 Balconies • Store

1 Sq. Mtr. = 10.764 Sq. Ft.

4 BHK + Store + SQ



Area - 2275 Sq. Ft.

- 4 Bedrooms • 3 Toilets • Kitchen • Dining • Drawing • 4 Balconies • Store • Servant Room

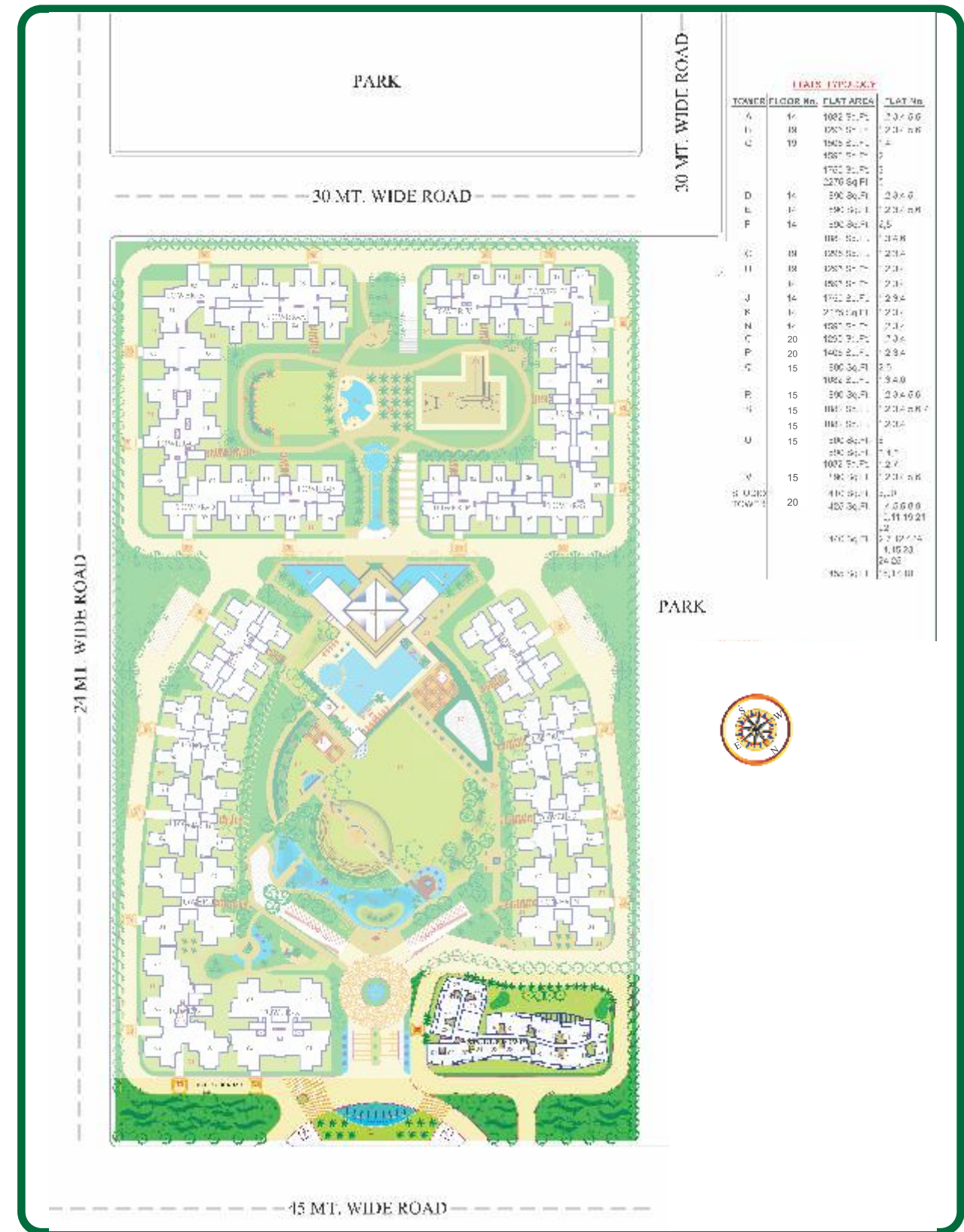


SALIENT FEATURES

- 82% open landscaped area
 - 2 Central Park of 3 acres & 2 Acres each within the complex
 - Surrounded by 2 lush green sector parks
 - In-house club with exclusive facilities
 - Swimming pool, Health Club
 - Badminton Court, Tennis Court & Amphitheatre
 - 24 hour water & power supply
 - Reticulated gas supply to every kitchen
 - Shopping complex next to the complex
 - Close to Sector-18, the entertainment hub of Noida
 - Minutes away from reputed educational institutions like Amity, APJ, DPS etc.
 - Vaastu friendly fengshui layout & design
 - Ample parking space
- Well-designed complex with beautiful landscape.
 - Located at Noida-Greater Noida Expressway.
- Structure :** Earthquake Resistance R.C.C. frame structure & non-load bearing brick walls
- Communication & Security System :**
- Intercom :** Intercom facility in all flats connected with security room and administration office.
- Security :** Guard room at main Entrance for Efficient manual.
- Garbage shoot :**
- FFS :** Each & Every tower will be well equipped with Fire Suppression System.
- (i) Dry : The Fire extinguishers will be available at each floor.
- (ii) Sound : The Fire Alarm System will be available at each floor.
- (iii) Wet : The provision of Wet Pipe line at each floor.

1 Sq. Mtr. = 10.764 Sq. Ft.

SITE LAYOUT PLAN





supertech
Yours for Life



Sector- 137, Expressway, Noida
2, 3, 4 B/R Apartments