



Ametek
**DOON
SQUARE**
SIDCUL IT Park, Dehradun

THE PREMIUM COMMERCIAL ADDRESS AMIDST SCENIC BEAUTY

Mall | Multiplex | Retail | Office Space | Serviced Apartments | Hotel





Dehradun

the heart of the fastest growing economy

Dehradun is located just 230 kilometers from the national capital and is well connected by road, rail and air to major Indian cities. Its proximity to the sacred Ganga river, the religious towns of Rishikesh, Haridwar, Badrinath and Kedarnath and the popular hill station of Mussoorie makes it an important destination for tourists and adventure sports lovers. Being the hub of a booming real estate, people from all over the country including NRIs (Non Resident Indians) have been aggressively investing in the city. According to a survey conducted by Business Standard, Dehradun ranks 5th on NRIs' list of property investment destination. Properties in Dehradun promise you a high return on investment, both financially and by quality of life.

The Uttarakhand Government has also taken active steps in improving the infrastructure of the city. Today, Dehradun can boast of having one of the best power and water supply distribution schemes in the entire country.

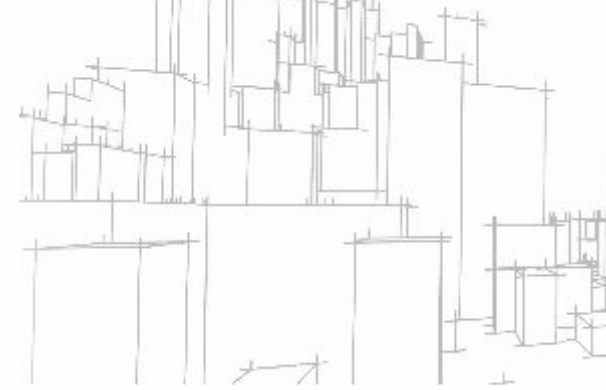


Doon Square

the hottest destination in Dehradun's economic future

Ametek presents Doon Square; the commercial project that's already the talk of Dehradun. Situated at the epicenter of SIDCUL IT Park, Doon Square is poised to be the hottest commercial destination in Dehradun's economic future. Spread over 4.2 acres, this 5-storey project accommodates Mall, Multiplex, Retail, Office Space, Corporate Business Suites and Hotel.

Doon Square is located in the heart of SIDCUL Information Park over 60 acres at Sahastradhara road, Dehradun is the state capital with intelligent buildings and hi-tech habitat centre. The State Government has undertaken major initiatives in IT Education, formulation of a pro-active IT policy and development of International Quality Infrastructure.





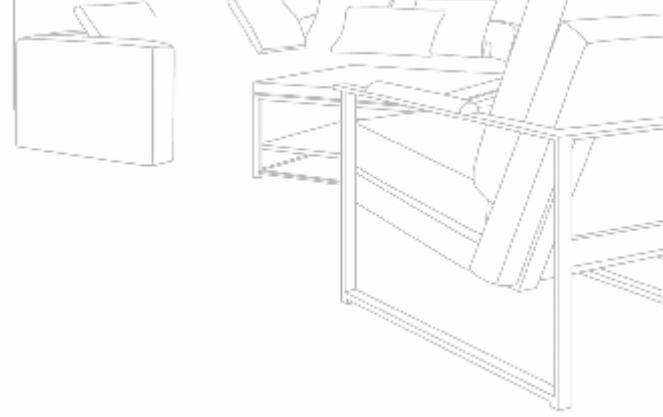
Retail

at a leisurely pace

With well-developed residential sectors in the vicinity, and the thriving commercial and IT hub, you are assured of a high-purchase-power-captive clientele at Doon Square.

The well-planned retail area is designed to let a person shop at their own pace. Set up a restaurant, an apparel store, a boutique or a gift store. No matter what your retail venture is, you will find an audience willing to indulge here.





Office Spaces

where comfort & business go hand-in-hand

The futuristic, meticulously planned work spaces are the hallmark of Doon Square. It is designed to free your mind from worries that include parking, security, environment, lack of recreation and unthoughtful surroundings. With its intelligently designed work spaces amidst a picture perfect environment and a host of other features, doing business here will be a pleasure.





World-class comfort and service in fully-furnished serviced apartments

Experience the perfect combination of space, aesthetics and design nestling amidst lush green surroundings. Equipped with ultra modern facilities, Serviced Apartments ensure that you enjoy the best of both worlds. Come, create your personal world in the lap of nature.



Serviced Apartments

Typical Unit Plan
Type: B
Area: 555 sq. ft.
(51.58 sq.mt.)



Amenities



King size bed with
mattress and pillows

Bed side tables

2 single seater sofa

Coffee table

Study desk with chair

Curtains with rods

Air-conditioner

22" LCD TV

Wardrobe

Designer light fittings

Ceiling fan

Modular kitchenette

Under counter Refrigerator

Chimney

Cooktop

Geyser in toilet

Towel rack/Ring accessories in toilet

Vanity in toilet

Exhaust fan

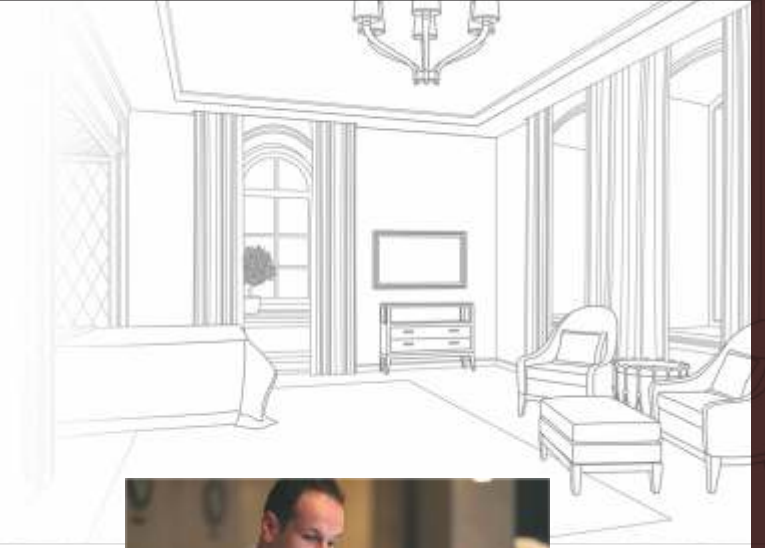


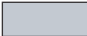




Livbox is a hotel brand operated by VFT Hotels.

Livbox by VFT is a premium hotel chain offering unparalleled luxury accommodations in Noida, Dehradun, and Rudrapur. Nestled within high-end residential projects, our fully equipped premium suites provide a perfect blend of opulence and comfort.

At Livbox, we believe in creating extraordinary experiences for our guests. Each suite is thoughtfully designed, exuding elegance and sophistication. Our guests enjoy a host of upscale amenities, ensuring a truly indulgent stay.



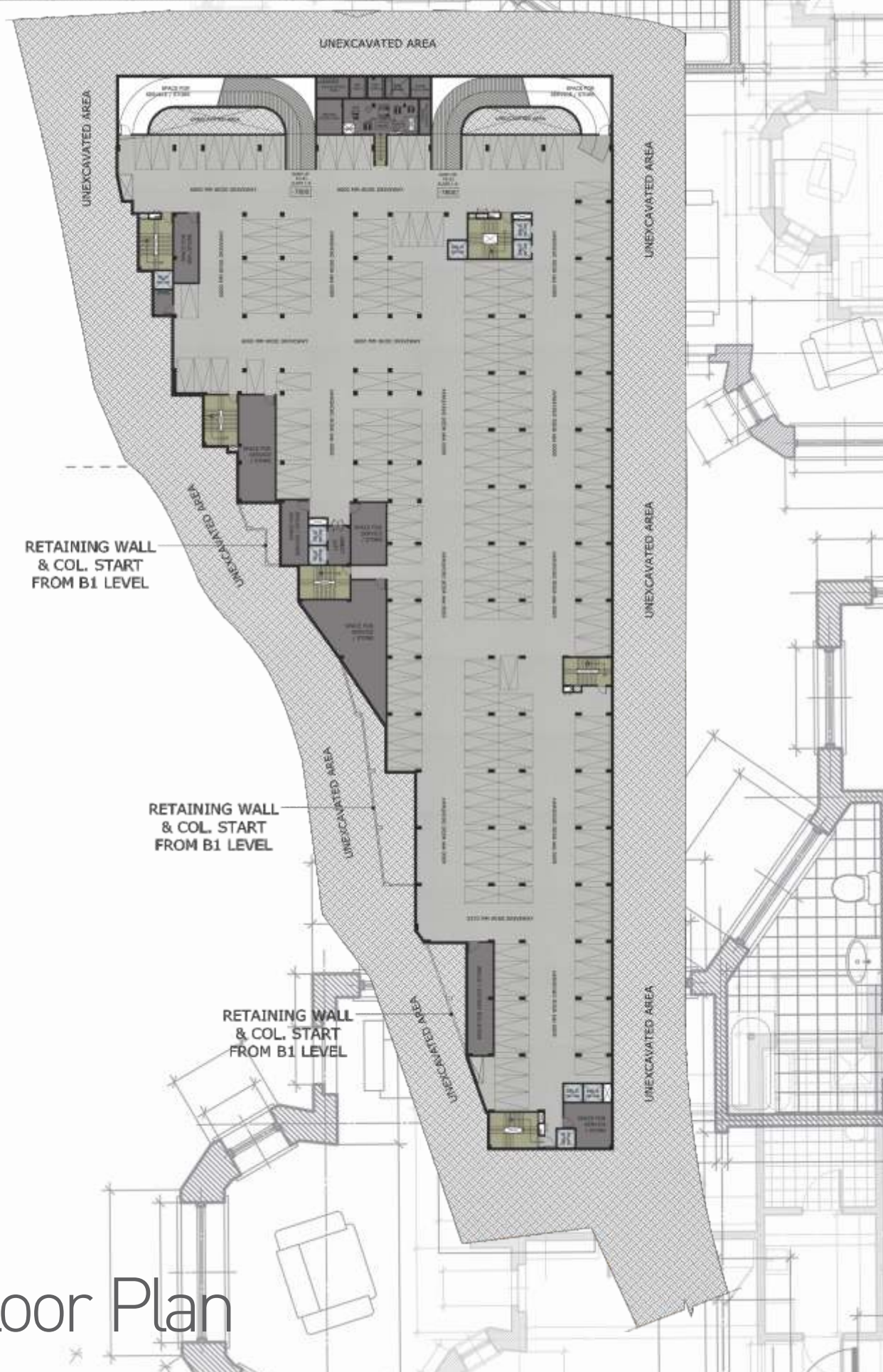
-  LIFTS
-  INTERNAL ROAD
-  SERVICE/STORE AREA

Basement-02 Floor Plan

RETAINING WALL
& COL. START
FROM B1 LEVEL

RETAINING WALL
& COL. START
FROM B1 LEVEL

RETAINING WALL
& COL. START
FROM B1 LEVEL





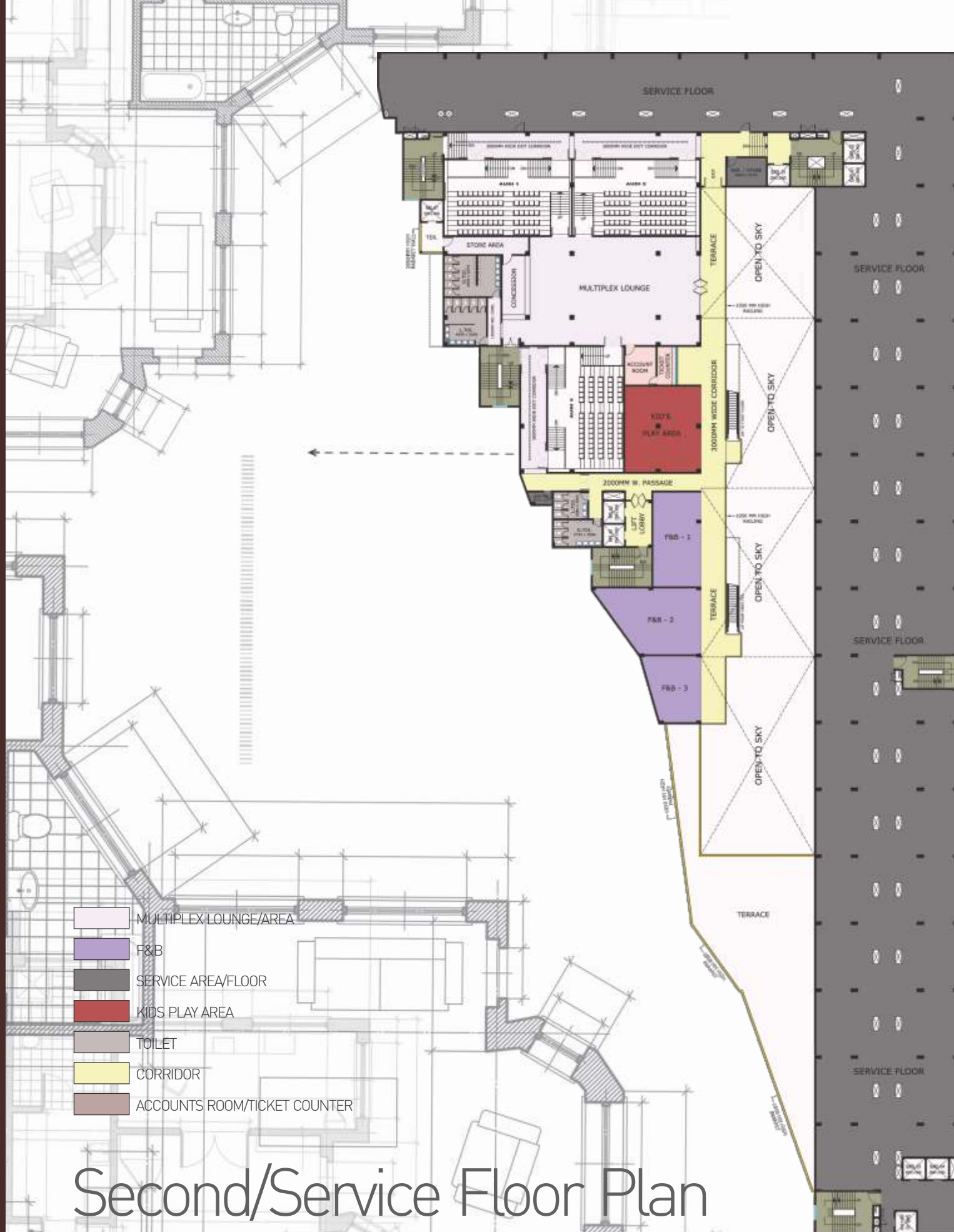
- SHOPS
- ANCHOR STORE
- SERVICE APT. LOBBY/CORRIDOR
- F&B
- MALL CORRIDOR AREA
- MALL SERVICE AREA
- PARKING/ROAD AREA
- SECURITY

Ground Floor Plan

- SHOPS
- ANCHOR STORE
- SERVICE/STORE AREA
- MALL CORRIDOR AREA
- F&B
- LIFT LOBBY
- F.C. SHOPS
- SERVICE PASSAGE
- DISH WASH
- TOILET
- TERRACE/BALCONY AREA
- CASH COUNTER & KIOSK

First Floor Plan





- MULTIPLEX LOUNGE/AREA
- F&B
- SERVICE AREA/FLOOR
- KIDS PLAY AREA
- TOILET
- CORRIDOR
- ACCOUNTS ROOM/TICKET COUNTER

Second/Service Floor Plan

- SERVICE APT. TYPE A
- SERVICE APT. TYPE B
- SERVICE APT. LOBBY/CORRIDOR
- SERVICE AREA
- MULTIPLEX AREA

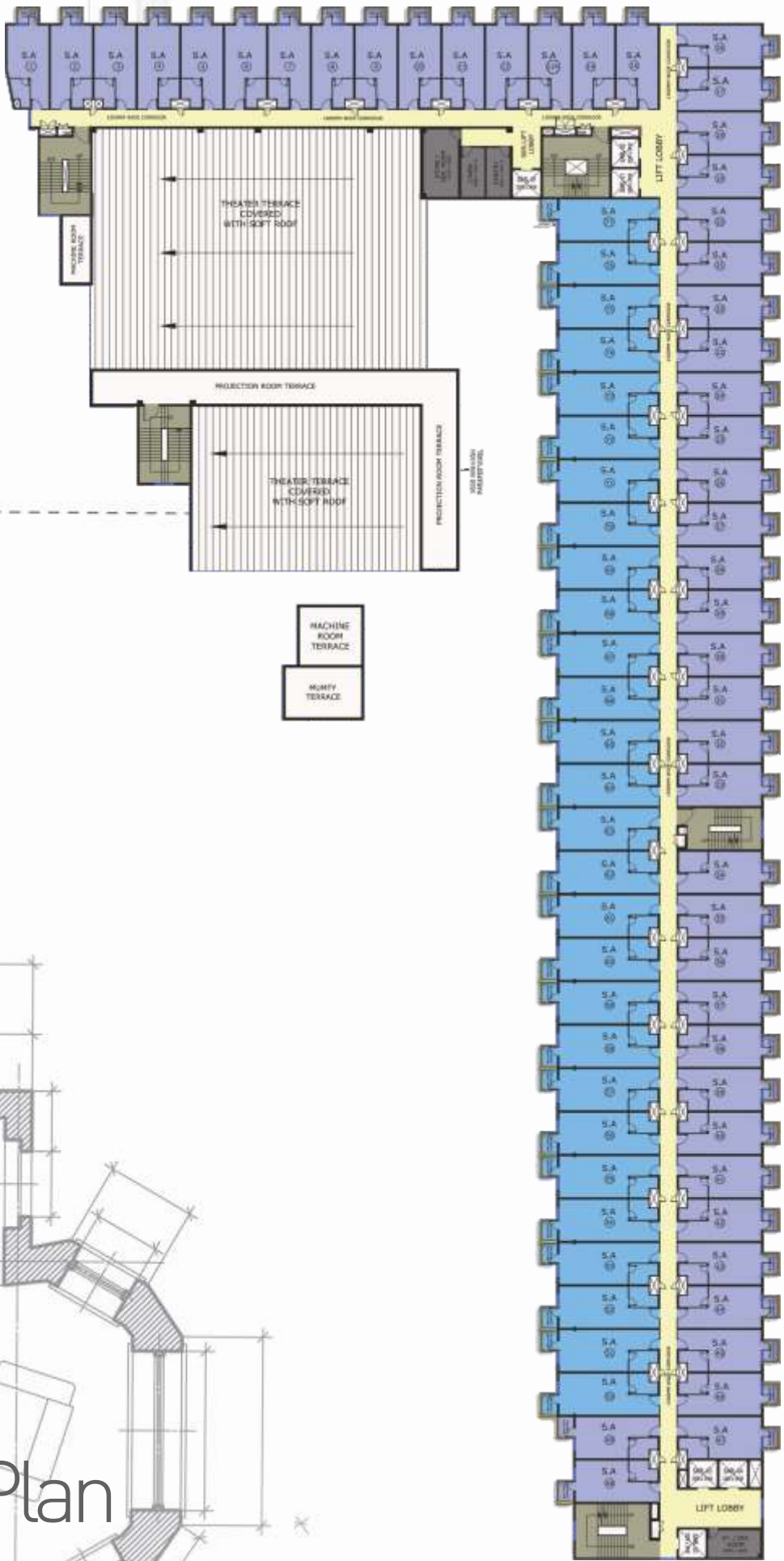
Third Floor Plan





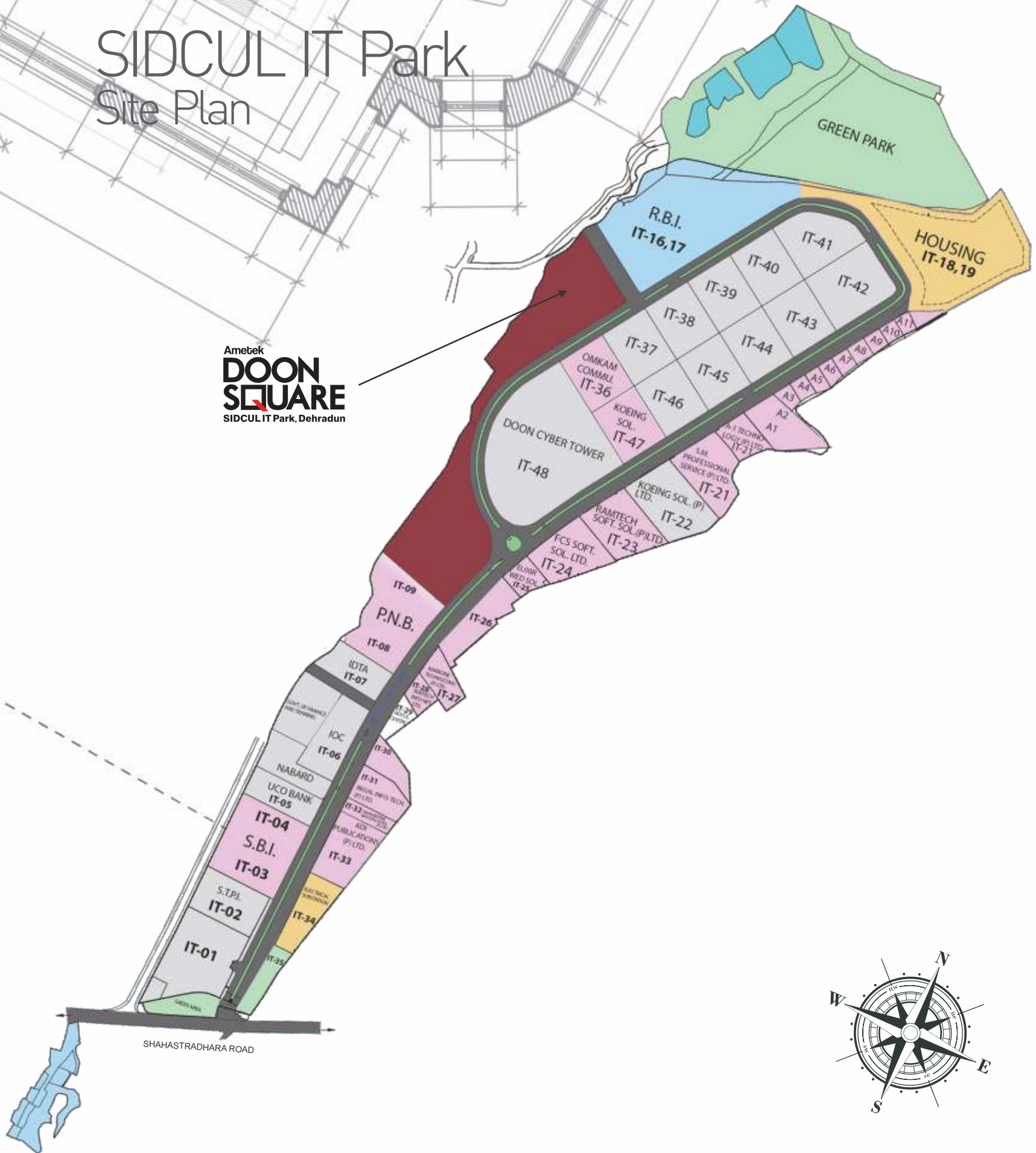
- SERVICE APT. TYPE A
- SERVICE APT. TYPE B
- CORRIDOR AREA
- SERVICE AREA

4th to 6th Floor Plan



SIDCUL IT Park Site Plan

Ametek
DOON SQUARE
SIDCUL IT Park, Dehradun



Doon Square Site Plan





HASSLE FREE LIVING.

BREATHTAKING
VIEWS



Ametek
**DOON
SQUARE**
SIDCUL IT Park, Dehradun

DEHRADUN
FINEST HIGH
STREET

RETAIL CENTER



A TAPESTRY OF
TASTES UNFOLDS
IN OUR

FOOD COURT



CATCH THE LATEST
BLOCKBUSTERS IN
DEHRADUN'S

PREMIER MULTIPLEX



A WORLD OF
FUN AWAITS IN
OUR VIBRANT

PLAY ZONE



MAKE YOUR
OCCASSIONS
SPECIAL



EXPLORE
THE BEAUTY OF

STUDIO LIVING



LIVBOX
MODERN & STYLISH

STUDIOS FOR RENT



INNOVATIVE SPACES
FOR INSPIRED MINDS:
CO-WORK AT

DOON SQUARE

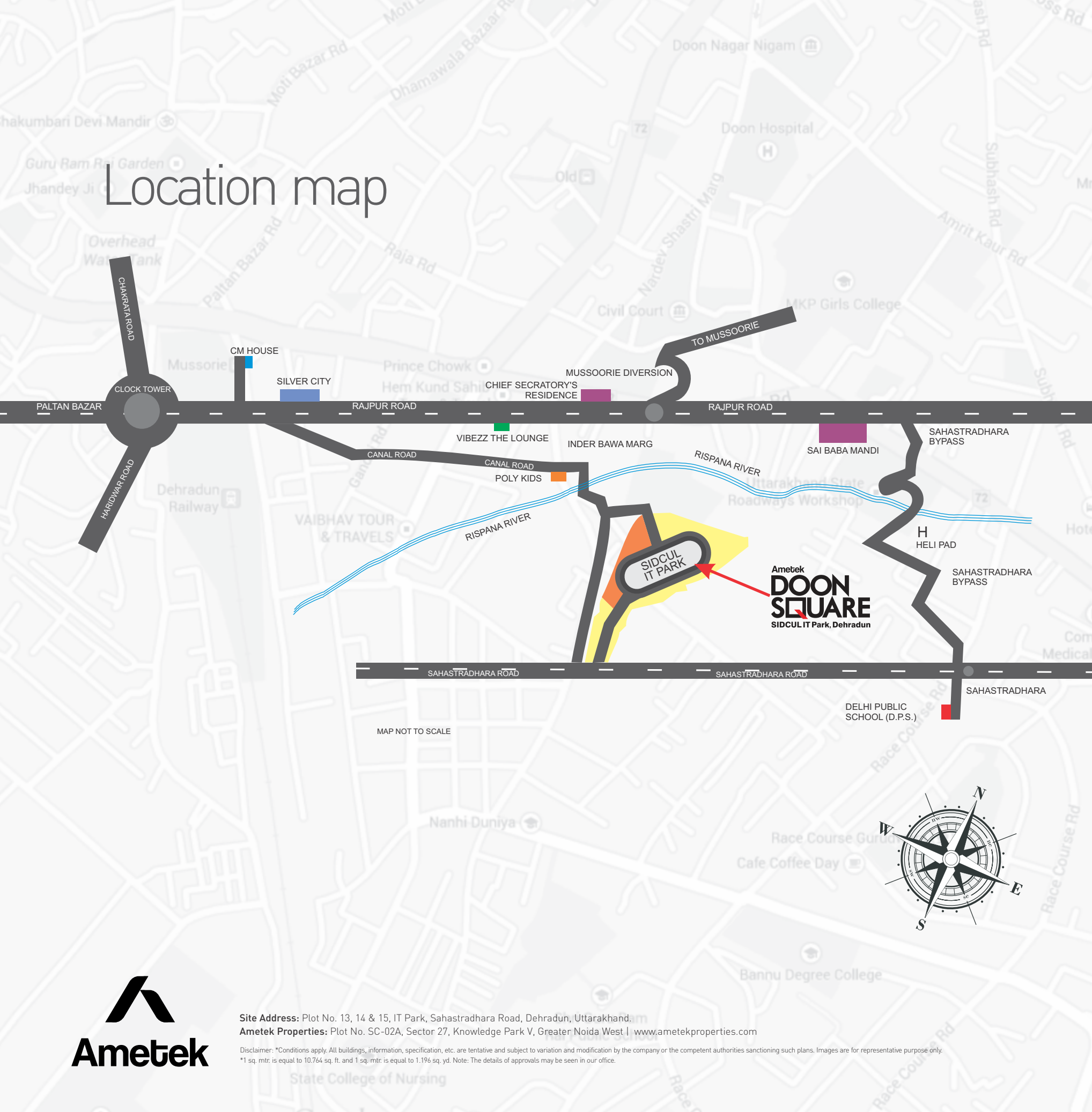


DEHRADUN
FINEST HIGH
STREET

RETAIL CENTER



Location map



MAP NOT TO SCALE



Site Address: Plot No. 13, 14 & 15, IT Park, Sahastradhara Road, Dehradun, Uttarakhand.
Ametek Properties: Plot No. SC-02A, Sector 27, Knowledge Park V, Greater Noida West | www.ametekproperties.com

Disclaimer: *Conditions apply. All buildings, information, specification, etc. are tentative and subject to variation and modification by the company or the competent authorities sanctioning such plans. Images are for representative purpose only.
*1 sq. mtr. is equal to 10.764 sq. ft. and 1 sq. mtr. is equal to 1.196 sq. yd. Note: The details of approvals may be seen in our office.