



Gopika Enclave

Name of Trust

जनहित आवास

DEVELOPED BY

PUSHPANJALI DEVELOPER'S

(CONSTRUCTING SUCCESS TOGETHER)

ALLOTMENT BY REGISTRATION ONLY

**Affordable Homes to Support PMAY
(Pradhan Mantri Awas Yojana)**

WEF : 21st November 2024

UPRERAPRJ6753

www.pushpanjalidevelopers.com





ABOUT COMPANY

The company was incorporated by Mr. Govind Anand in 2011. After a long journey in the real estate market, the company has successfully delivered more than 4 lakh sq/ft in residential and commercial projects. We operate across four states in India: Bihar, Jharkhand, West Bengal, and Delhi NCR, and we are looking forward to expanding into other states.

KEY HIGHLIGHT : 100+ Customers

More Than 100 Families Already Living in this Group Housing Project Happily



COMPANY FOUNDERS



GOVIND ANAND (Chief Managing Director)

A dynamic visionary leader, Govind Anand started his entrepreneurial journey with GOVIND & ASSOCIATES in 2011, M/S PUSHPANJALI DEVELOPERS 2011. A visionary by nature and seasoned professional with more than 12+ years experience of real estate.



AMIT ANAND (Managing Director)

An Entrepreneur owning multiple ventures with more than 07+ years of experience of building construction and real estate. Among the multitude, he is also conferred with many prestigious awards for his expertise in construction and real estate infrastructure planning of many projects.



What Makes Us Different

These are the things we provide. If you don't see what you're looking for, don't hesitate to get in touch!



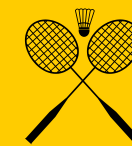
Swimming Pool



Jogging Track



Kids Play Area



Badminton Court



Banke Bihari Temple



Cycling Track



Club House



Gymnasium



3 Tier Security



Meditation Centre



24hr Power Backup



Community Hall



SWIMMING POOL , KIDS PLAY AREA , GYMNASIUM





BANKE BIHARI MANDIR, MEDITATION CENTRE





BADMINTON COURT, JOGGING TRACK , CYCLING TRACK





24 hr POWER BACKUP, 3 TIER SECURITY



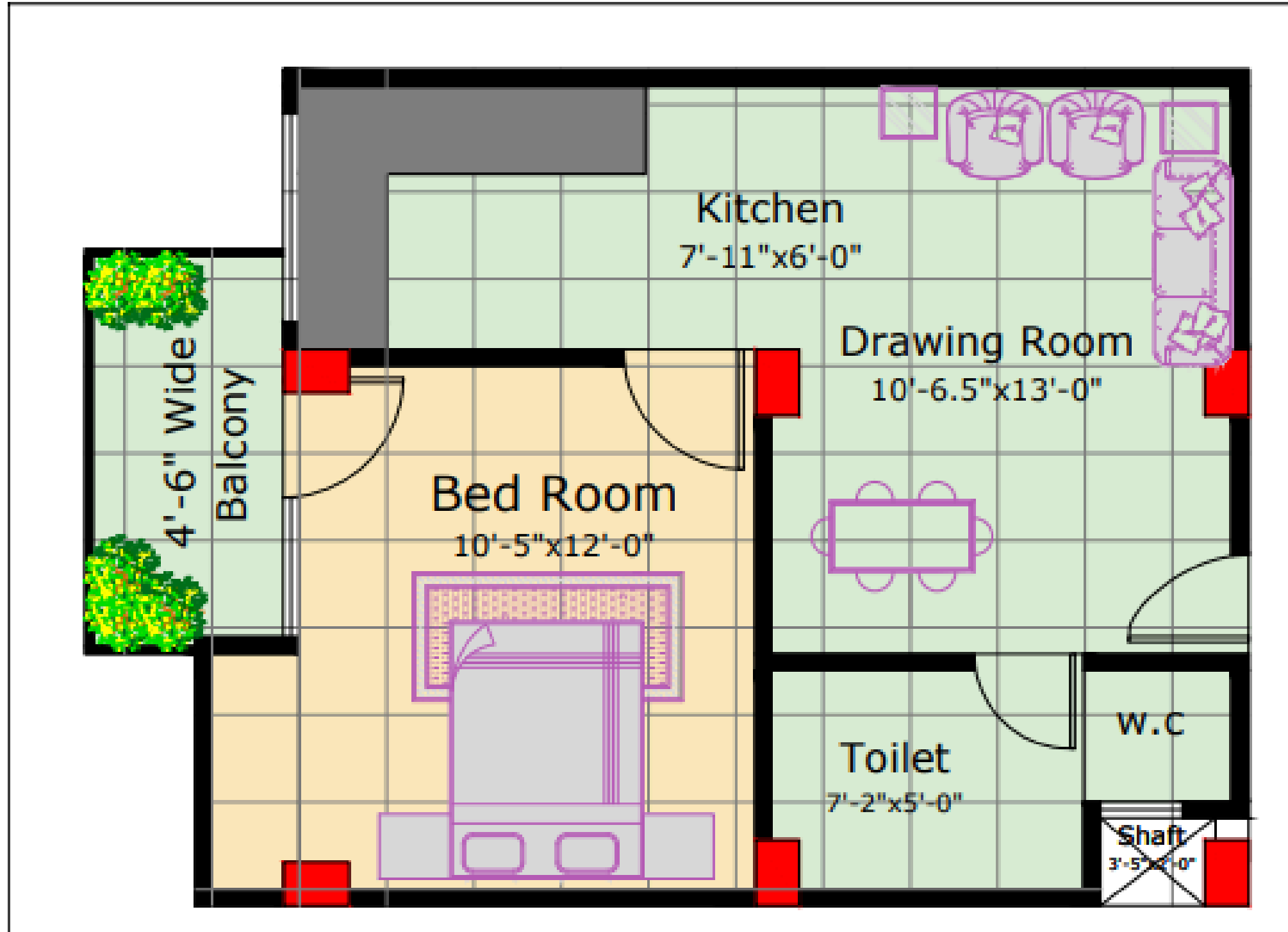


CLUB HOUSE , COMMUNITY HALL

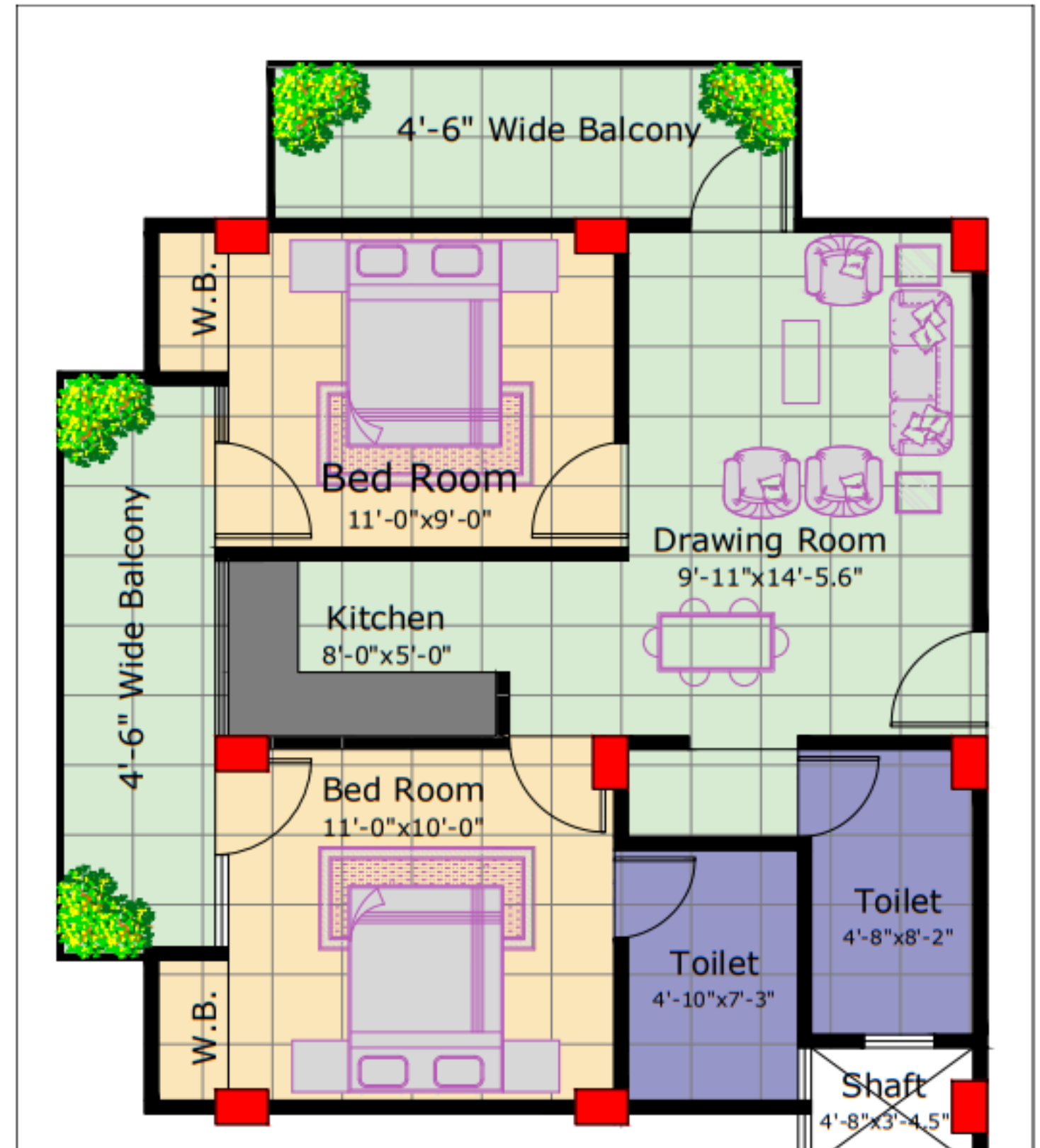




PROJECT LAYOUTS



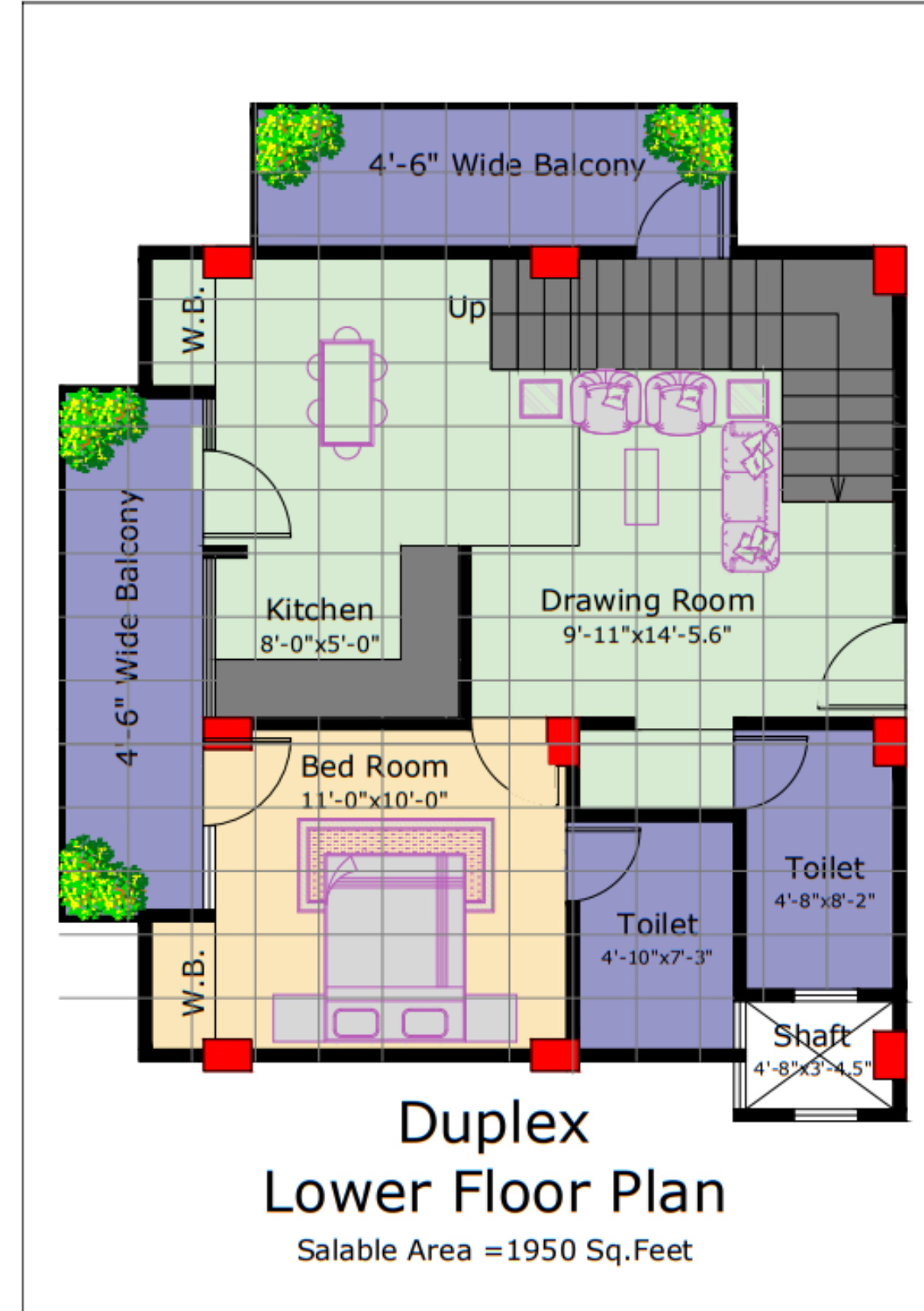
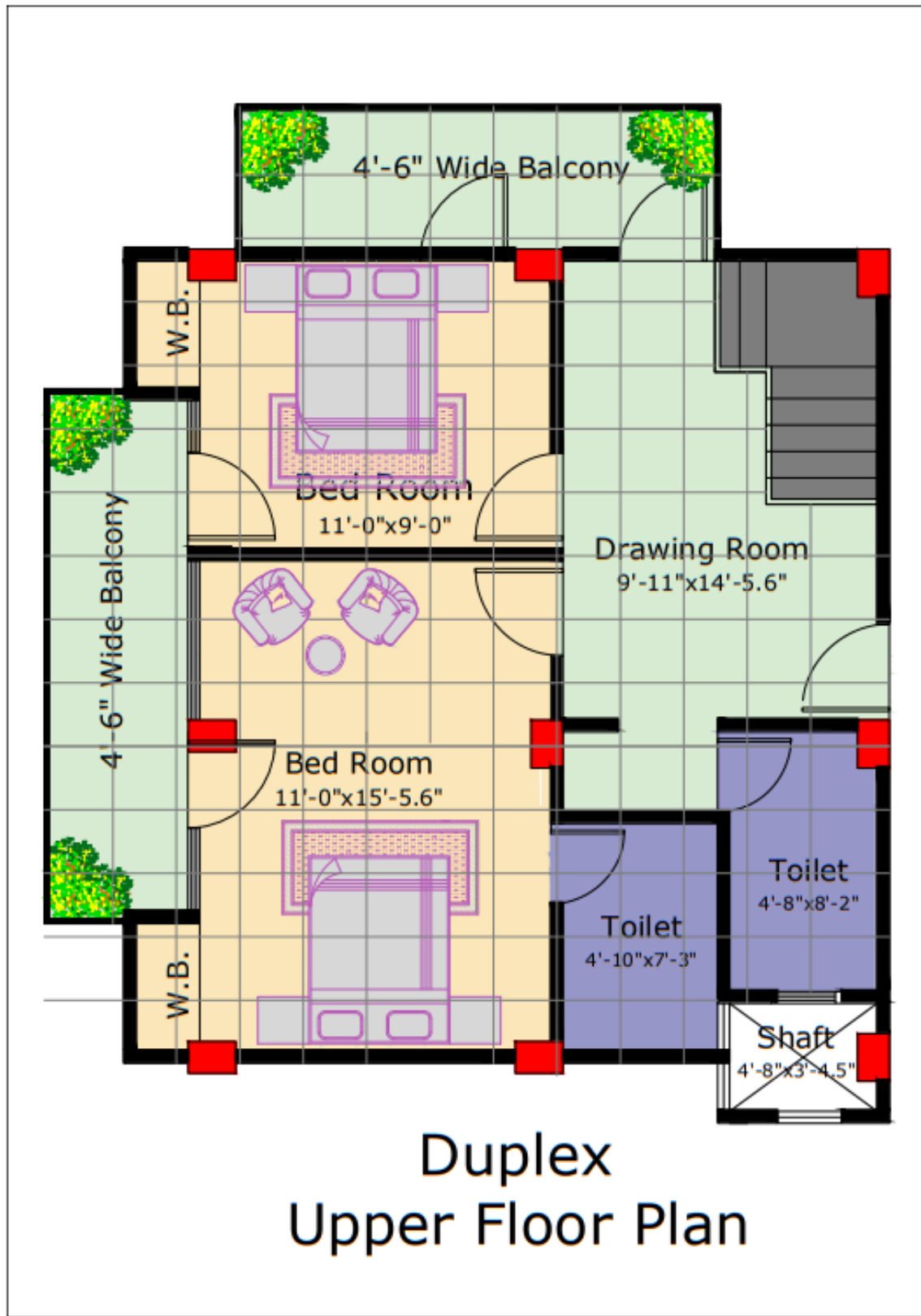
1 BHK FLAT
SIZE : 570 SQ.FT



2 BHK FLAT
SIZE : 950 SQ.FT



PROJECT LAYOUTS



3 BHK + STUDY VILLAMENT
Size : 1950 SQ.FT



PROJECT LAYOUTS



Pushpanjali Developer Specifications

Furnished with high-quality materials and finishes in our design, we are confident that Pushpanjali Developer will provide you with everything you need to live your dream life!

Kitchen

- Floor: Vitrified Tiles
- Electrical Fittings: Modular Plates & Switches
- Walls: Ceramic tiles of 2' height from the platform
- Fittings: Stainless steel sink with CP fittings
- Internal Door: Open
- Ceiling: Oil-bound distemper

Bedroom

- Floor: Vitrified Tiles, Wooden Flooring (Master Bedroom)
- External Door and Window: UPVC
- Electrical Fittings: Modular Plates & Switches
- Walls: Plastic Paint
- Internal Door: Flush Shutter with Wooden Frame
- Ceilings: False Ceiling

Electrical

- Wiring: Copper wiring & PVC concealed conduit
- Provision: Adequate light and power points
- Switches: T.V. outlets with modular switches and protective M.C.B.'s

Lift

- Floor: PVC flooring
- Electrical Fittings: Sheet & Switches
- Hardware: Doors with metal fittings
- Electrical: Cooper wiring & PVC concealed conduit

Lobbies / Corridor

- Floor: Vitrified Tiles
- Walls: Plastic Paint
- Hardware: Doors & windows with metal fittings

Balconies

- Floor: Ceramic Tiles
- Walls: Oil Bound Distemper
- Ceilings: Permanent Paint Finish

Exterior Finish

- Walls: Texture Paint
- External Door and Window: UPVC
- Hardware: All Doors & windows with metal fittings

Bathroom

- Floor: Ceramic Tiles
- Walls: Ceramic tiles up to the ceiling
- Fittings: Branded chinaware & CP fittings
- Internal Door: Flush shutter
- Ceilings: False ceiling

Dining

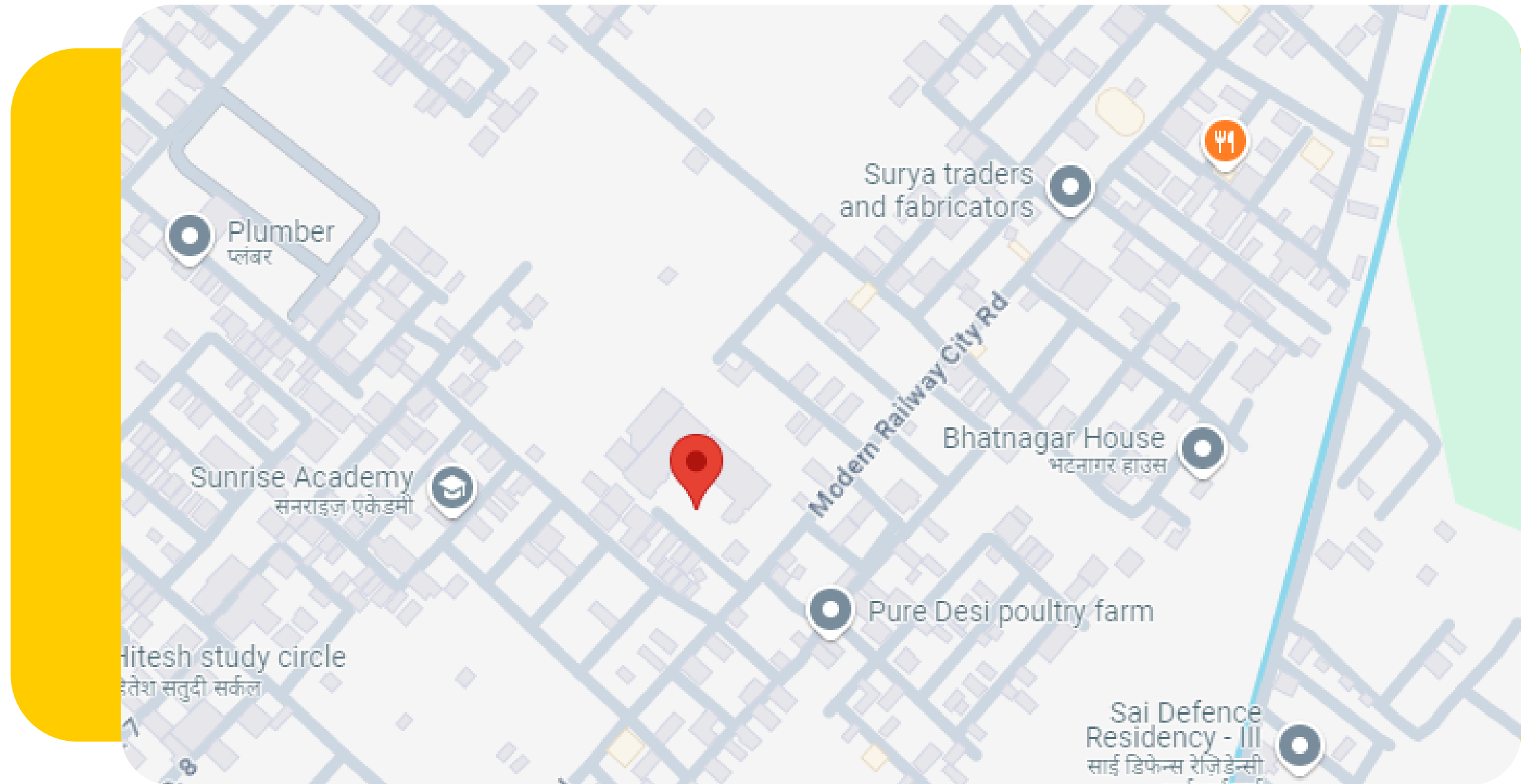
- Floor: Vitrified Tiles
- Walls: Plastic Paint
- Ceilings: Pop False Ceiling with Plastic Paint

Furnishing Options Also Available Here!

Features	Basic	Classic	Premium
Fans in bedrooms	✓	✓	✓
Lights in bedrooms	✓	✓	✓
Exhaust fans in washroom	✓	✓	✓
Wardrobe in bedrooms	✓	✓	✓
Modular kitchen	✓	✓	✓
Digital touch mirrors in washrooms	✓	✓	✓
Video doorbell	✓	✓	✓
Bed in bedrooms		✓	✓
Sofa set in living room		✓	✓
Chimney		✓	✓
HOB		✓	✓
Water purifier		✓	✓
Geyser in washrooms			✓
Television			✓
Air conditioner in bedrooms			✓
Microwave			✓
Washing machine			✓



GOPIKA ENCLAVE LOCATION



CONNECTIVITY



IMS COLLEGE : 2.5KM

ABES COLLEGE : 3.5 KM

NOIDA EXTENTION : 2 KM

GHAZIABAD RAILWAY STATION : 6 KM

LAL KUAN : 1.5 KM

GAUR CHAUK : 10 MINS

EK MURTI : 8 MINS

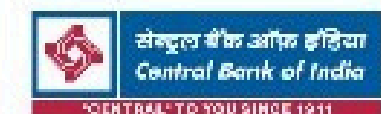
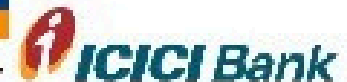
NOIDA 52 METRO : 15 MINS

**80% HOME
LOAN APPROVED
FROM ALL
NATIONALISE
BANKS PRIVATE
BANKS AND NBFC'S
WITH AN ATTRACTIVE
EMI SCHEME OF
RS 19,999/- MONTHLY**



बैंक ऑफ़ बड़ौदा
Bank of Baroda

Relationships beyond banking.



State Bank of India

Our Contact



www.pushpanjalidevelopers.com



info@pushpanjalidevelopers.com



Modern Railway City Road - Greater Noida
Gautam Bubbha Nagar U.P