



If there is heaven, it's here.

**sky** **SIDDHA**  
A SPRING CITY-SIDDHA PROJECT

# Walk on Kolkata's tallest Rooftop Skywalk.

Looming high above the ground level, the **Rooftop Skywalk spans several feet across three towers.** Enjoy a heavenly bird's-eye view of the city as you take to the serpentine **Joggers' Track.**

## Skywalk features

Leisure pool | Children's play area | Jogging loop  
Skyplex | Skygym | Landscaped green areas | Sitting  
area | Performance deck and Party lawn | Water  
feature | Outdoor lounge | Yoga and  
meditation zone | Sundeck | Telescope deck



Children's Play Area on the Rooftop Skywalk



Yoga and Meditation Zone on the Rooftop Skywalk



Observatory Deck with Telescope on the Rooftop Skywalk



Premium Club by the waterbody



Gymnasium

## Premium Club

The 27,000 sq ft premium club is where luxury meets leisure. Catch a quick game or find a pleasant acquaintance, come build bonds that last a lifetime.

### Club amenities

Swimming pool	Indoor games room	Cafeteria
Landscaped garden	Kids' room	AC Banquet hall
Mini-theatre   Creché	Spa   Gymnasium	Multi-activity room
Library and lounge	Virtual games room	Squash court

### Facilities and Conveniences

Visitors' car park  
 Intercom network  
 Rainwater harvesting system  
 Firefighting system  
 Cable TV and broadband point  
 Water filtration plant  
 Sewage treatment plant  
 Power backup for common areas  
 24/7 water supply  
 24/7 security and surveillance  
 High speed elevator  
 Facility management system  
 Sitting areas

### Provision for

Guest accommodation facility  
 Pet friendly zone  
 Solar power in common areas

## Quality blends with style

Your safety is our priority. And we prepare with care. At Siddha Sky we bring together superior quality building materials, imported hardware and fail-proof construction design. These offer maximum luxury within a convenient budget.

### Super-structure

Earthquake resistant RCC framed structure with monolithic concrete

### Internal walls

Ceiling Putty

Wall Gypsum

### Doors

Tough timber frames

Solid core flush shutters

### Windows

Aluminium frames with fully glazed shutters and quality fittings

### Flooring

Wooden flooring in master bedroom and vitrified tiles in the other bedrooms, living, dining room and balcony

### Kitchen

Floor Vitrified tiles

Countertops Granite with steel sink

Dados Ceramic tiles up to a height of 2' from counter top

Dados Ceramic tiles up to a height of 7.5'

### Sanitary ware

White, high quality porcelain and chromium plated fittings

### Electricals

Superior quality concealed copper wiring with the latest modular switches

### Telephone wiring

Central distribution console networked with all apartments

### Exterior

Weather-proof exterior finish

### Lift facia

Italian marble

### Lift lobby

Vitrified tiles



Bedroom



Living area

## Praises that are Sky high



CREDAI Bengal Realty Awards 2017 ~ Best Upcoming Mid Segment Residential Project for Siddha Sky



### Green homes for you and the environment

Green homes for you and the environment planned and designed according to 'Green Homes' norms of IGBC's 'Gold Rating System'.

Siddha Sky is registered as a 'Green Homes' project by the Indian Green Building Council (IGBC). 'Green Homes' is the first rating programme developed in India, exclusively for the residential sector.

# Come, experience Siddha Sky.

Your home in the clouds awaits.

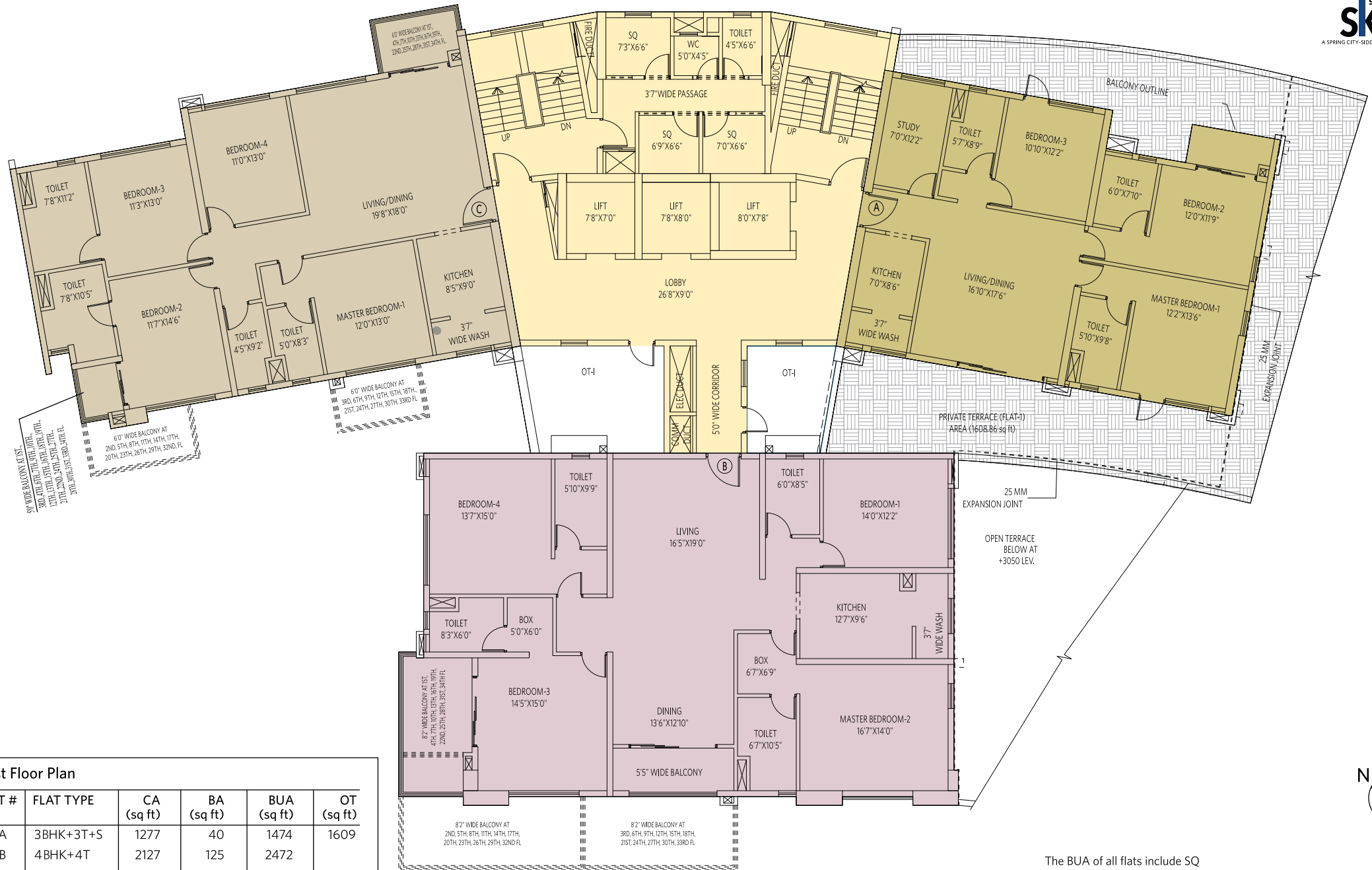
At Canal South Road, Siddha Sky is 75% open to sky and mostly open to Nature. Well-connected to the tech hub at Sector V via the EM Bypass, the project is easily accessible from New Town, Dalhousie, Park Street as well as Science City.



## Routes to your Sky

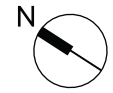
CIT More Beliaghata	0.5 km
EM Bypass	1.8 km
Sealdah Station	2.5 km
Pantaloons at Phoolbagan	2.5 km
ITC Hotel	2.7 km
Kankurgachi	3 km
Mani Square/Apollo Hospital	3.1 km
Sector V	5 km

# BLOCK A, BUILDING 1 • 1ST FLOOR PLAN



FLAT #	FLAT TYPE	CA (sq ft)	BA (sq ft)	BUA (sq ft)	OT (sq ft)
● A	3BHK+3T+S	1277	40	1474	1609
● B	4BHK+4T	2127	125	2472	
● C	4BHK+4T	1542	87	1818	

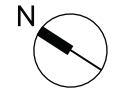
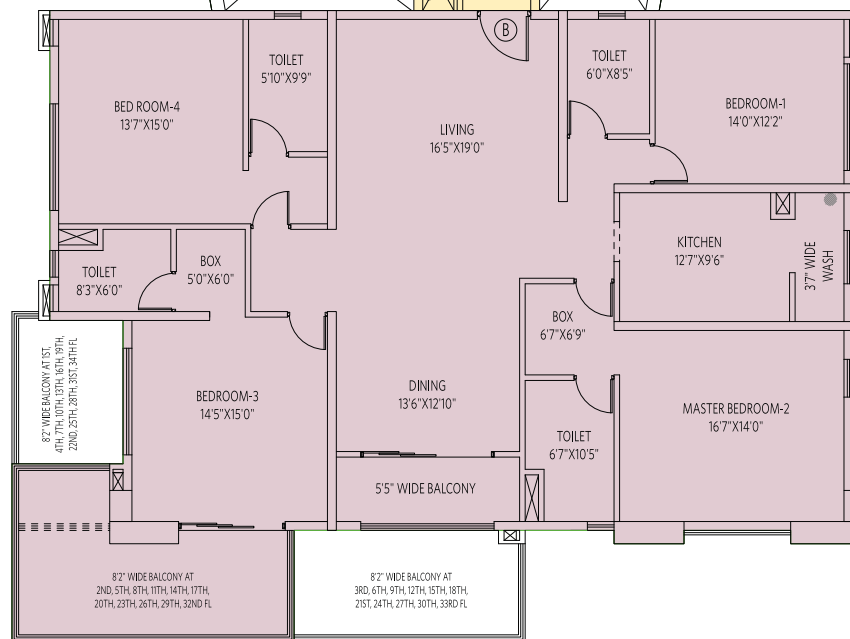
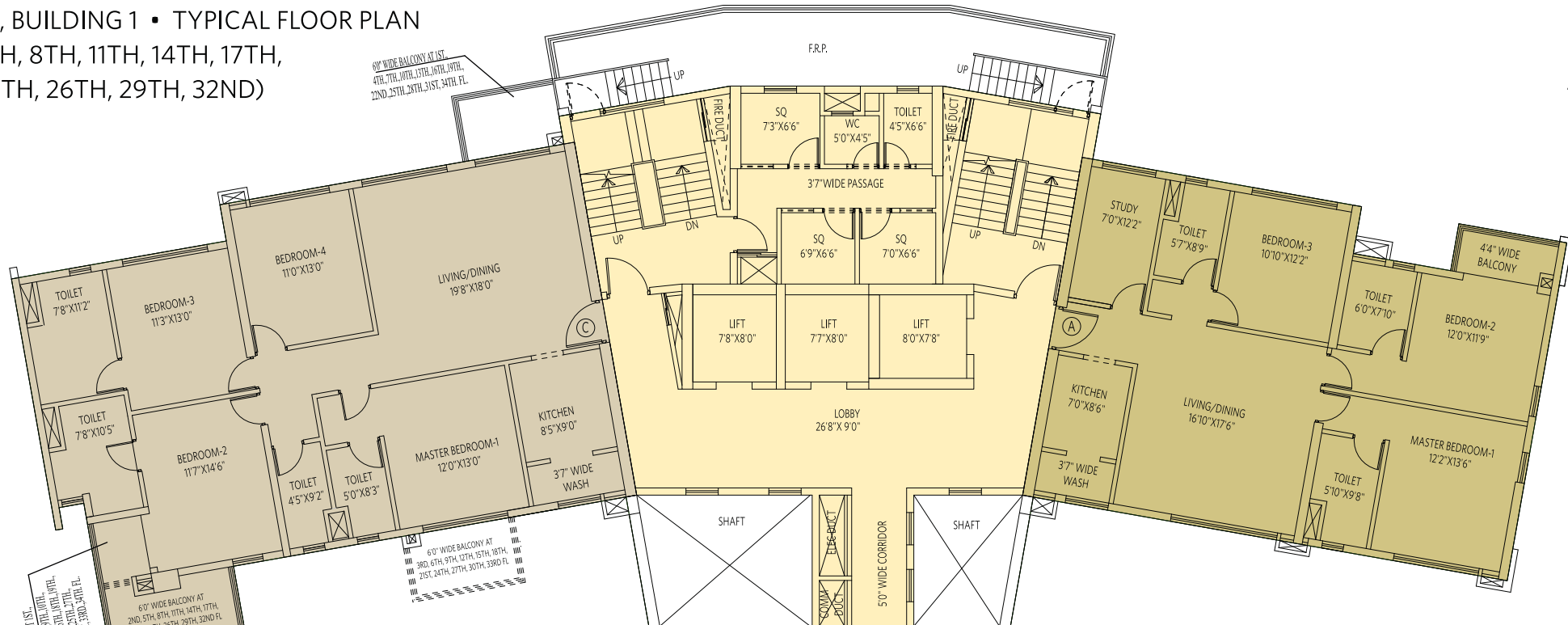
The BUA of all flats include SQ  
 BHK = Bedroom Hall Kitchen | T = Toilet | S = Study  
 BUA = Built Up Area | OT = Open Terrace | SQ = Servant Quarter



## 3 BHK with 3 Toilets & Study • Flat A



**BLOCK A, BUILDING 1 • TYPICAL FLOOR PLAN**  
 (2ND, 5TH, 8TH, 11TH, 14TH, 17TH,  
 20TH, 23TH, 26TH, 29TH, 32ND)



**Typical Floor Plan  
 32nd floor**

FLAT #	FLAT TYPE	CA (sq ft)	BA (sq ft)	BUA (sq ft)	OT (sq ft)
● A	3BHK+3T+S	1277	40	1474	
● B	4BHK+4T	2127		2348	201
● C	4BHK+4T	1542		1827	101

**Typical Floor Plan • 2nd, 5th, 8th, 11th, 14th, 17th, 20th, 23rd, 26th & 29th floors**

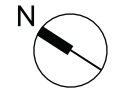
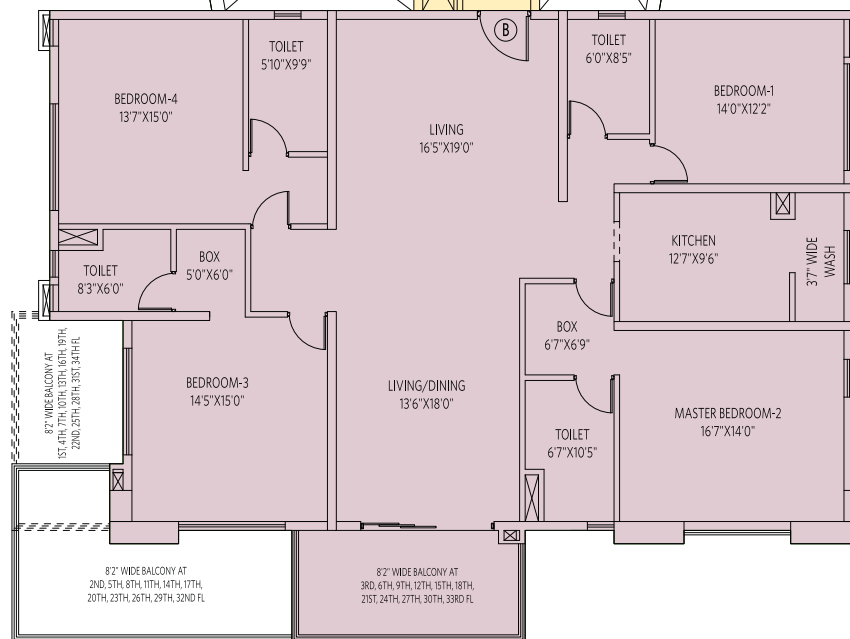
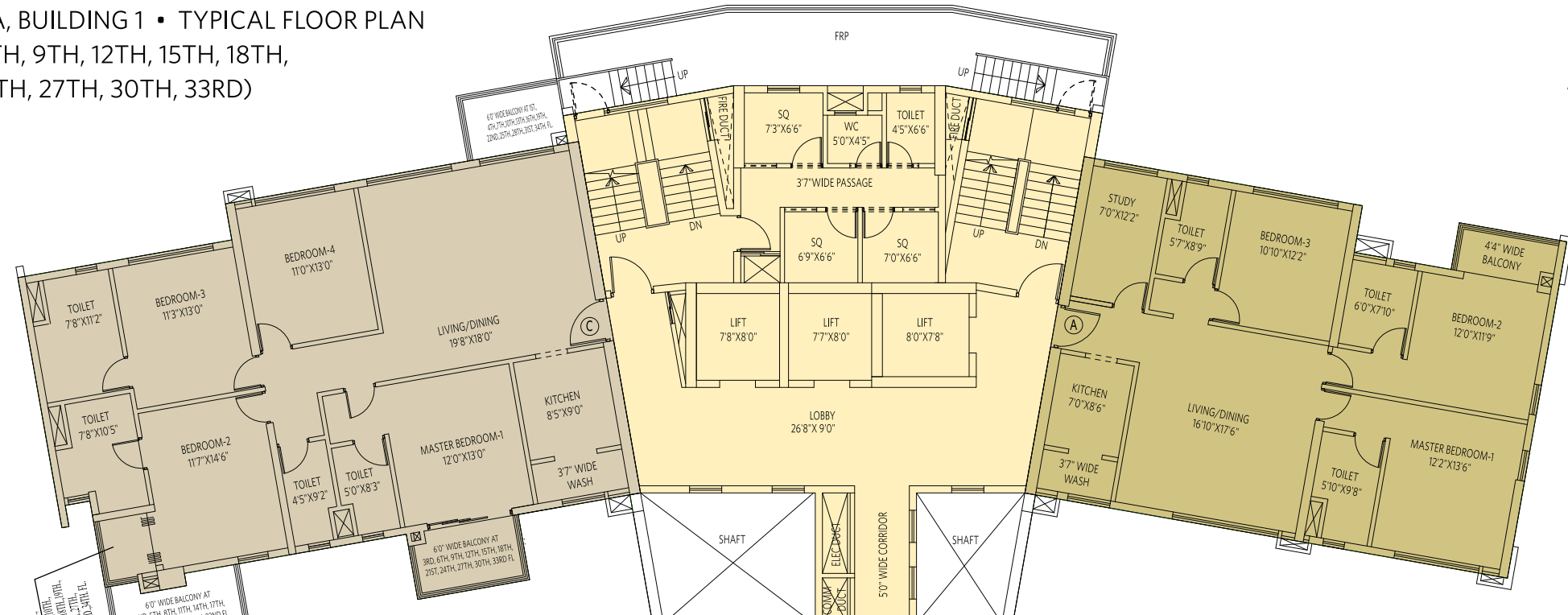
FLAT #	FLAT TYPE	CA (sq ft)	BA (sq ft)	BUA (sq ft)
● A	3BHK+3T+S	1277	40	1474
● B	4BHK+4T	2127	202	2550
● C	4BHK+4T	1542	101	1827

The BUA of all flats include SQ  
 BHK = Bedroom Hall Kitchen | T = Toilet | S = Study  
 BUA = Built Up Area | OT = Open Terrace | SQ = Servant Quarter

## 3 BHK with 3 Toilets & Study • Flat A



**BLOCK A, BUILDING 1 • TYPICAL FLOOR PLAN**  
 (3RD, 6TH, 9TH, 12TH, 15TH, 18TH,  
 21ST, 24TH, 27TH, 30TH, 33RD)



**Typical Floor Plan  
33rd floor**

FLAT #	FLAT TYPE	CA (sq ft)	BA (sq ft)	BUA (sq ft)	OT (sq ft)
● A	3BHK+3T+S	1277	40	1474	
● B	4BHK+4T	2127		2348	139
● C	4BHK+4T	1542	30	1819	63

**Typical Floor Plan • 3rd, 6th, 9th, 12th, 15th, 18th, 21st, 24th, 27th, 30th floors**

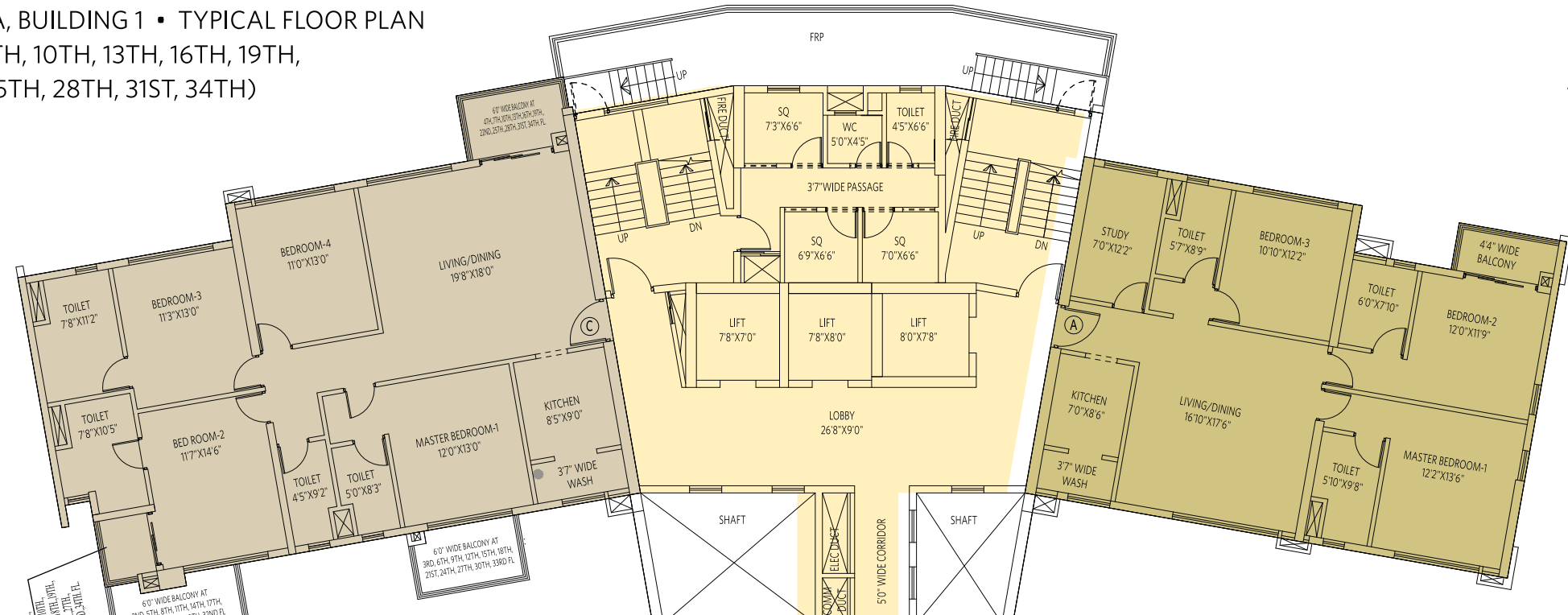
FLAT #	FLAT TYPE	CA (sq ft)	BA (sq ft)	BUA (sq ft)
● A	3BHK+3T+S	1277	40	1474
● B	4BHK+4T	2127	140	2487
● C	4BHK+4T	1542	92	1819

The BUA of all flats include SQ  
 BHK = Bedroom Hall Kitchen | T = Toilet | S = Study  
 BUA = Built Up Area | OT = Open Terrace | SQ = Servant Quarter

## 4 BHK with 4 Toilets • Flat B



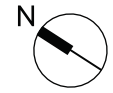
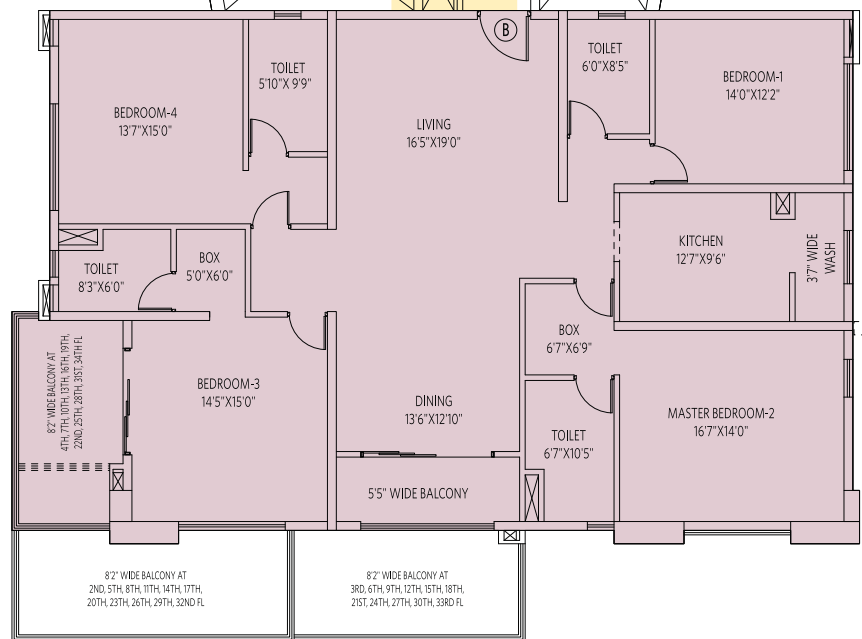
**BLOCK A, BUILDING 1 • TYPICAL FLOOR PLAN**  
 (4TH, 7TH, 10TH, 13TH, 16TH, 19TH,  
 22ND, 25TH, 28TH, 31ST, 34TH)



6'0" WIDE BALCONY AT 1ST, 3RD, 4TH, 6TH, 8TH, 10TH, 12TH, 14TH, 16TH, 17TH, 19TH, 21TH, 23TH, 25TH, 27TH, 29TH, 31ST, 33RD, 34TH FL.

6'0" WIDE BALCONY AT 2ND, 5TH, 8TH, 11TH, 14TH, 17TH, 20TH, 23TH, 26TH, 29TH, 32ND FL.

6'0" WIDE BALCONY AT 3RD, 6TH, 9TH, 12TH, 15TH, 18TH, 21ST, 24TH, 27TH, 30TH, 33RD FL.



**Typical Floor Plan 34th floor**

FLAT #	FLAT TYPE	CA (sq ft)	BA (sq ft)	BUA (sq ft)	OT (sq ft)
● A	3BHK+3T+S	1277	40	1474	
● B	4BHK+4T	2127		2348	124
● C	4BHK+4T	1542	30	1818	58

**Typical Floor Plan • 4th, 7th, 10th, 13th, 16th, 19th, 22nd, 25th, 28th, 31st floors**

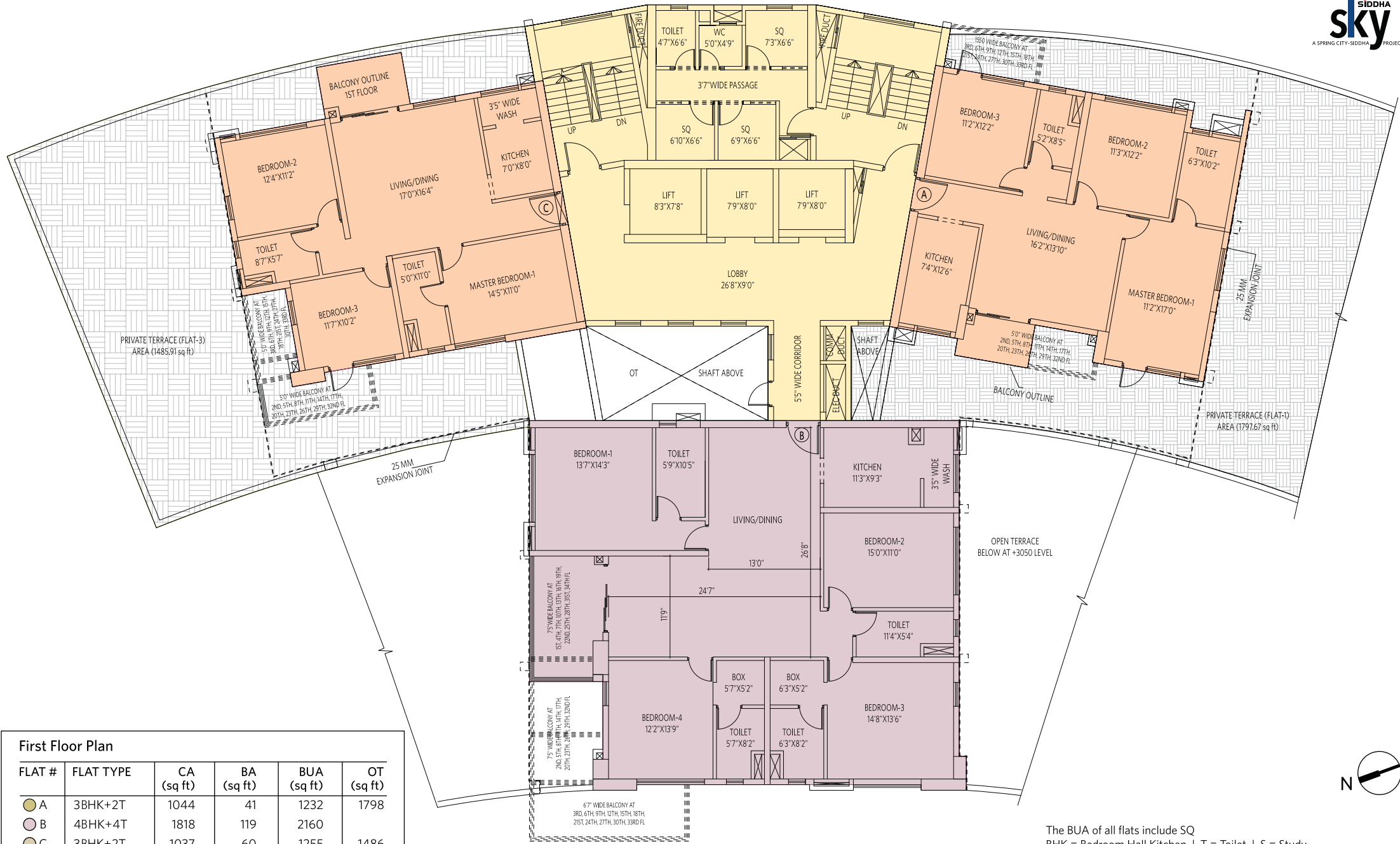
FLAT #	FLAT TYPE	CA (sq ft)	BA (sq ft)	BUA (sq ft)
● A	3BHK+3T+S	1277	40	1474
● B	4BHK+4T	2127	125	2472
● C	4BHK+4T	1542	87	1818

The BUA of all flats include SQ  
 BHK = Bedroom Hall Kitchen | T = Toilet | S = Study  
 BUA = Built Up Area | OT = Open Terrace | SQ = Servant Quarter

## 3 BHK with 3 Toilets & Study • Flat A



BLOCK A, BUILDING 2 • 1ST FLOOR PLAN



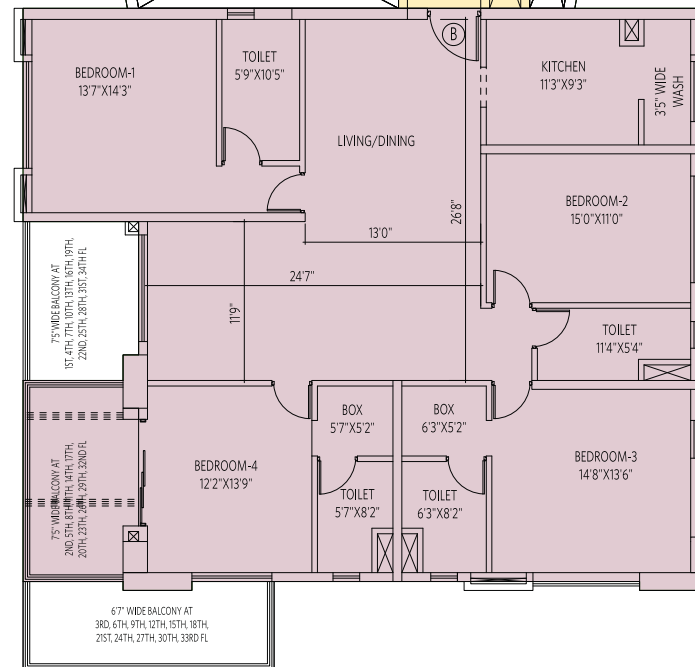
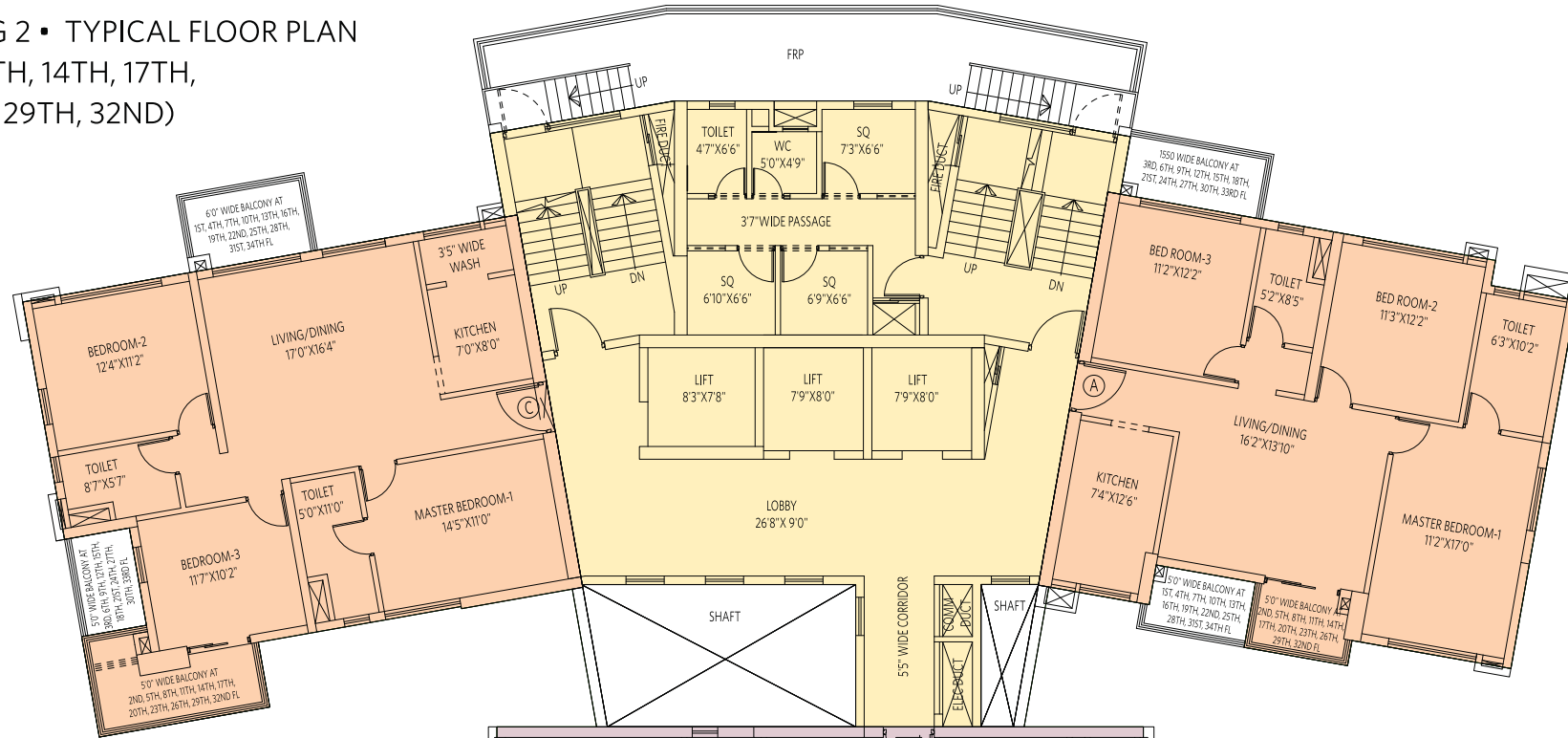
First Floor Plan					
FLAT #	FLAT TYPE	CA (sq ft)	BA (sq ft)	BUA (sq ft)	OT (sq ft)
● A	3BHK+2T	1044	41	1232	1798
● B	4BHK+4T	1818	119	2160	
● C	3BHK+2T	1037	60	1255	1486

The BUA of all flats include SQ  
 BHK = Bedroom Hall Kitchen | T = Toilet | S = Study  
 BUA = Built Up Area | OT = Open Terrace | SQ = Servant Quarter

### 3 BHK with 2 Toilets • Flat A



**BLOCK A, BUILDING 2 • TYPICAL FLOOR PLAN**  
 (2ND, 5TH, 8TH, 11TH, 14TH, 17TH,  
 20TH, 23TH, 26TH, 29TH, 32ND)



**Typical Floor Plan**  
**32nd floor**

FLAT #	FLAT TYPE	CA (sq ft)	BA (sq ft)	BUA (sq ft)	OT (sq ft)
A	3BHK+2T	1044	39	1229	
B	4BHK+4T	1818	120	2042	119
C	3BHK+2T	1037	77	1272	

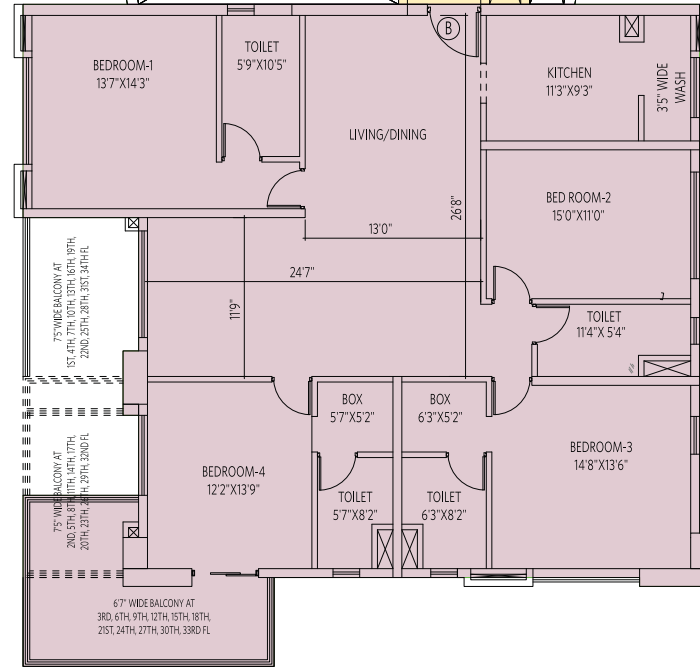
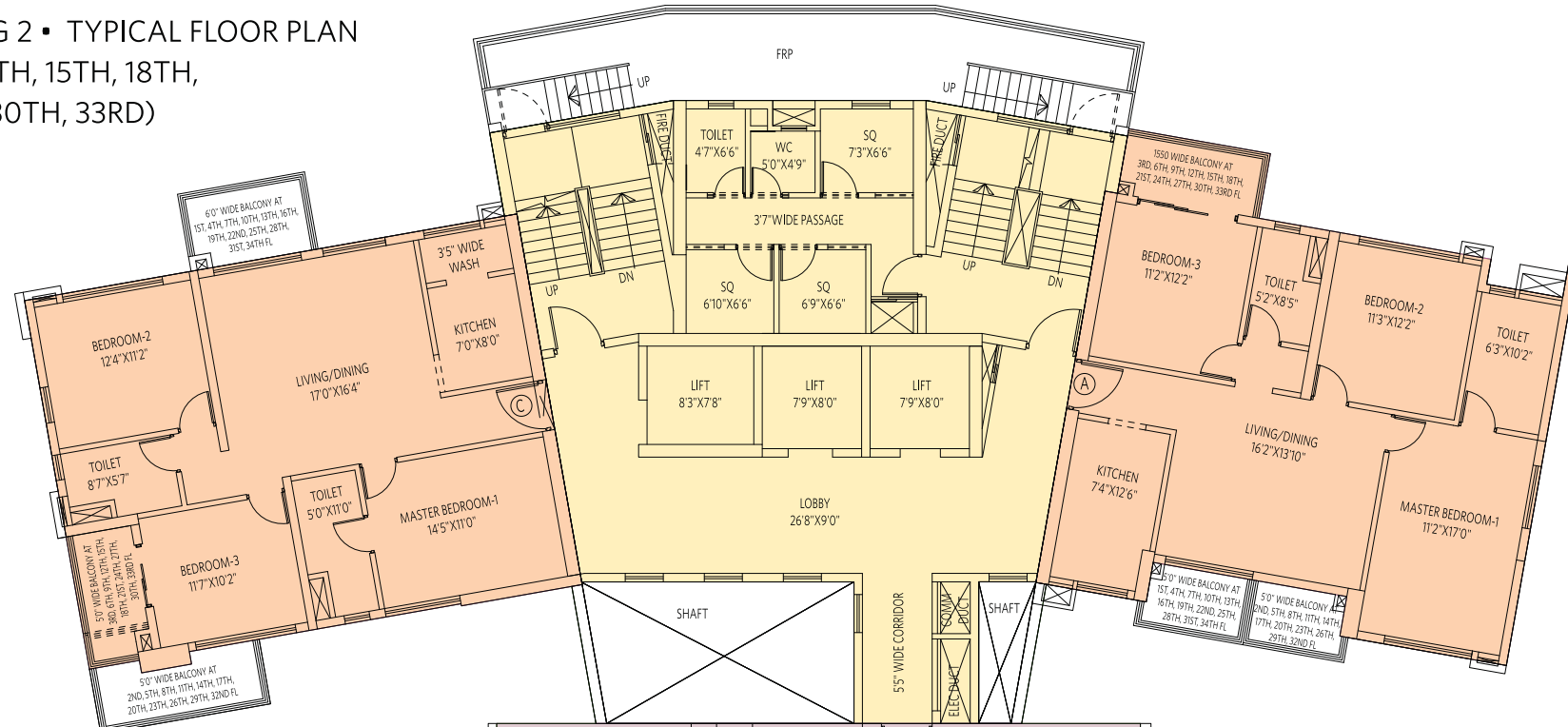
**Typical Floor Plan • 2nd, 5th, 8th, 11th, 14th, 17th, 20th, 23rd, 26th & 29th floors**

FLAT #	FLAT TYPE	CA (sq ft)	BA (sq ft)	BUA (sq ft)
A	3BHK+2T	1044	39	1229
B	4BHK+4T	1818	120	2161
C	3BHK+2T	1037	77	1272

The BUA of all flats include SQ  
 BHK = Bedroom Hall Kitchen | T = Toilet | S = Study  
 BUA = Built Up Area | OT = Open Terrace | SQ = Servant Quarter



**BLOCK A, BUILDING 2 • TYPICAL FLOOR PLAN**  
 (3RD, 6TH, 9TH, 12TH, 15TH, 18TH,  
 21ST, 24TH, 27TH, 30TH, 33RD)



**Typical Floor Plan  
 33rd floor**

FLAT #	FLAT TYPE	CA (sq ft)	BA (sq ft)	BUA (sq ft)	OT (sq ft)
A	3BHK+2T	1044	56	1251	
B	4BHK+4T	1818		2042	165
C	3BHK+2T	1037	51	1246	

**Typical Floor Plan • 3rd, 6th, 9th, 12th, 15th, 18th, 21st, 24th, 27th, 30th floors**

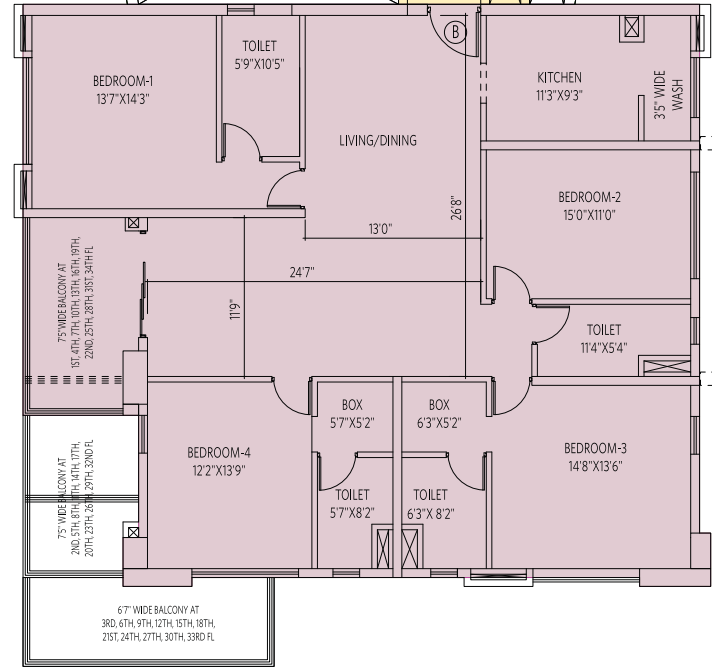
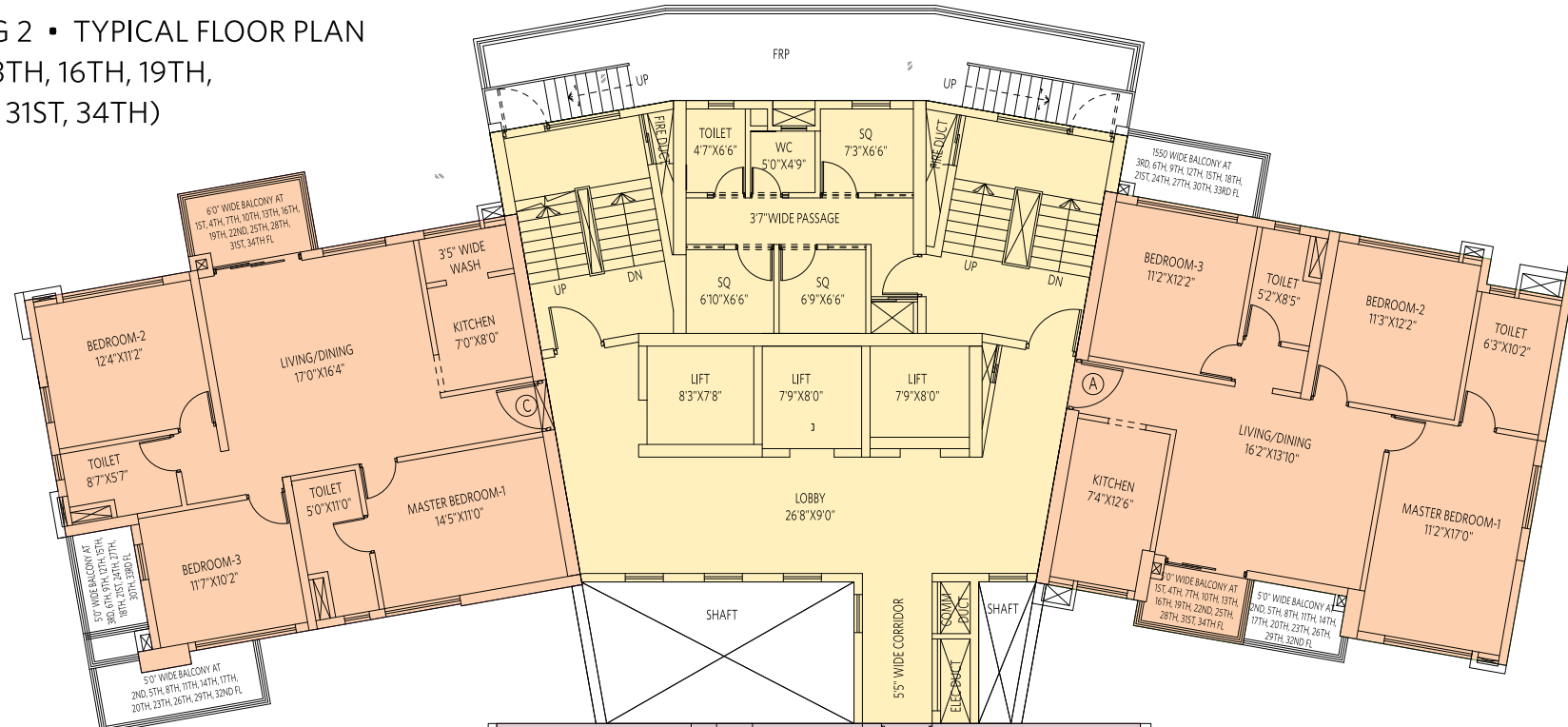
FLAT #	FLAT TYPE	CA (sq ft)	BA (sq ft)	BUA (sq ft)
A	3BHK+2T	1044	56	1251
B	4BHK+4T	1818	166	2207
C	3BHK+2T	1037	51	1246

The BUA of all flats include SQ  
 BHK = Bedroom Hall Kitchen | T = Toilet | S = Study  
 BUA = Built Up Area | OT = Open Terrace | SQ = Servant Quarter

4 BHK with 4 Toilets • Flat B



**BLOCK A, BUILDING 2 • TYPICAL FLOOR PLAN**  
 (4TH, 7TH, 10TH, 13TH, 16TH, 19TH,  
 22ND, 25TH, 28TH, 31ST, 34TH)



**Typical Floor Plan  
 34th floor**

FLAT #	FLAT TYPE	CA (sq ft)	BA (sq ft)	BUA (sq ft)	OT (sq ft)
A	3BHK+2T	1044	41	1232	
B	4BHK+4T	1818	119	2042	118
C	3BHK+2T	1037	60	1255	

**Typical Floor Plan • 4th, 7th, 10th, 13th, 16th, 19th,  
 22nd, 25th, 28th, 31st floors**

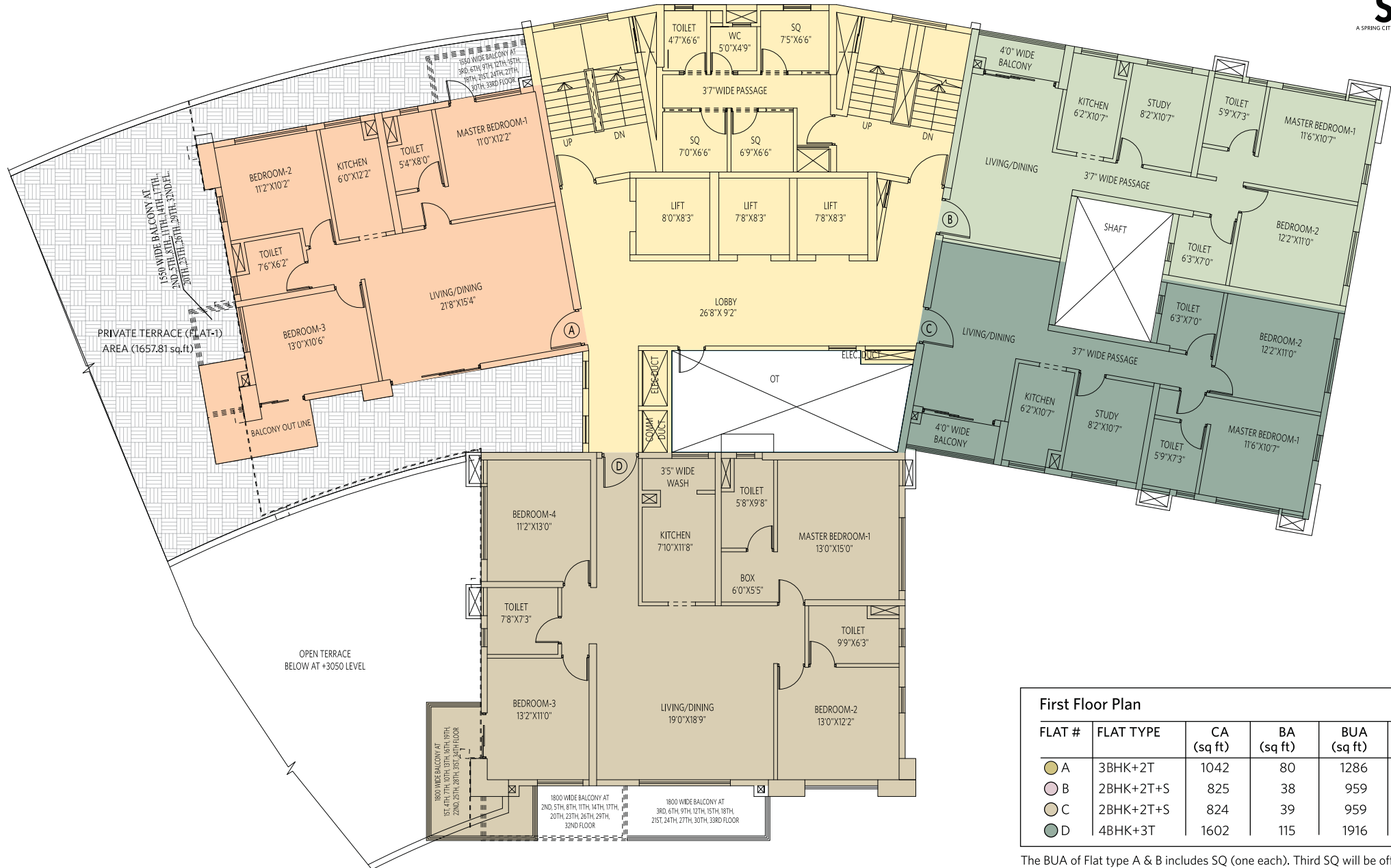
FLAT #	FLAT TYPE	CA (sq ft)	BA (sq ft)	BUA (sq ft)
A	3BHK+2T	1044	41	1232
B	4BHK+4T	1818	119	2160
C	3BHK+2T	1037	60	1255

The BUA of all flats include SQ  
 BHK = Bedroom Hall Kitchen | T = Toilet | S = Study  
 BUA = Built Up Area | OT = Open Terrace | SQ = Servant Quarter

### 3 BHK with 2 Toilets ▪ Flat A



# BLOCK A, BUILDING 3 • 1ST FLOOR PLAN



FLAT #	FLAT TYPE	CA (sq ft)	BA (sq ft)	BUA (sq ft)	OT (sq ft)
A	3BHK+2T	1042	80	1286	1658
B	2BHK+2T+S	825	38	959	
C	2BHK+2T+S	824	39	959	
D	4BHK+3T	1602	115	1916	

The BUA of Flat type A & B includes SQ (one each). Third SQ will be offered (to be purchased separately) to either Flat B & C on first-come-first-served basis.  
 BHK = Bedroom Hall Kitchen | T = Toilet | S = Study  
 BUA = Built Up Area | OT = Open Terrace | SQ = Servant Quarter

3 BHK with 2 Toilets • Flat A



BLOCK A, BUILDING 3 • TYPICAL FLOOR PLAN  
 (2ND, 5TH, 8TH, 11TH, 14TH, 17TH,  
 20TH, 23TH, 26TH, 29TH, 32ND)



Typical Floor Plan • 2nd, 5th, 8th, 11th, 14th, 17th, 20th, 23rd, 26th & 29th floors

FLAT #	FLAT TYPE	CA (sq ft)	BA (sq ft)	BUA (sq ft)
A	3BHK+2T	1042	56	1262
B	2BHK+2T+S	825	38	959
C	2BHK+2T+S	824	39	959
D	4BHK+3T	1602	89	1889

Typical Floor Plan  
 32nd floor

FLAT #	FLAT TYPE	CA (sq ft)	BA (sq ft)	BUA (sq ft)	OT (sq ft)
A	3BHK+2T	1042	56	1262	
B	2BHK+2T+S	825	38	959	
C	2BHK+2T+S	824	39	959	
D	4BHK+3T	1602	89	1801	88

The BUA of Flat type A & B includes SQ (one each). Third SQ will be offered (to be purchased separately) to either Flat B & C on first-come-first-served basis.  
 BHK = Bedroom Hall Kitchen | T = Toilet | S = Study  
 BUA = Built Up Area | OT = Open Terrace | SQ = Servant Quarter

4 BHK with 3 Toilets • Flat D



**BLOCK A, BUILDING 3 • TYPICAL FLOOR PLAN**  
 (3RD, 6TH, 9TH, 12TH, 15TH, 18TH,  
 21ST, 24TH, 27TH, 30TH, 33RD)



**Typical Floor Plan • 3rd, 6th, 9th, 12th, 15th, 18th, 21st, 24th, 27th, 30th floors**

FLAT #	FLAT TYPE	CA (sq ft)	BA (sq ft)	BUA (sq ft)
A	3BHK+2T	1042	54	1262
B	2BHK+2T+S	825	38	959
C	2BHK+2T+S	824	39	959
D	4BHK+3T	1602	91	1893

**Typical Floor Plan 33rd floor**

FLAT #	FLAT TYPE	CA (sq ft)	BA (sq ft)	BUA (sq ft)	OT (sq ft)
A	3BHK+2T	1042	54	1262	
B	2BHK+2T+S	825	38	959	
C	2BHK+2T+S	824	39	959	
D	4BHK+3T	1602		1803	90

The BUA of Flat type A & B includes SQ (one each). Third SQ will be offered (to be purchased separately) to either Flat B & C on first-come-first-served basis.  
 BHK = Bedroom Hall Kitchen | T = Toilet | S = Study  
 BUA = Built Up Area | OT = Open Terrace | SQ = Servant Quarter

## 2 BHK with 2 Toilets & Study • Flat B



**BLOCK A, BUILDING 3 • TYPICAL FLOOR PLAN**  
 (4TH, 7TH, 10TH, 13TH, 16TH, 19TH,  
 22ND, 25TH, 28TH, 31ST, 34TH)



**Typical Floor Plan • 4th, 7th, 10th, 13th, 16th, 19th, 22nd, 25th, 28th, 31st floors**

FLAT #	FLAT TYPE	CA (sq ft)	BA (sq ft)	BUA (sq ft)
A	3BHK+2T	1042	80	1286
B	2BHK+2T+S	825	38	959
C	2BHK+2T+S	824	39	959
D	4BHK+3T	1602	115	1916

**Typical Floor Plan 34th floor**

FLAT #	FLAT TYPE	CA (sq ft)	BA (sq ft)	BUA (sq ft)	OT (sq ft)
A	3BHK+2T	1042	80	1286	
B	2BHK+2T+S	825	38	959	
C	2BHK+2T+S	824	39	959	
D	4BHK+3T	1602		1801	115

The BUA of Flat type A & B includes SQ (one each). Third SQ will be offered (to be purchased separately) to either Flat B & C on first-come-first-served basis.  
 BHK = Bedroom Hall Kitchen | T = Toilet | S = Study  
 BUA = Built Up Area | OT = Open Terrace | SQ = Servant Quarter

## 3 BHK with 2 Toilets • Flat A



## Architect



Agrawal & Agrawal, led by Jay Prakash Agrawal, the renowned architect, ranks amongst Eastern India's leading architectural practitioners. It is known for its residential apartments, commercial complexes, townships, IT infrastructure, complexes, malls, hotels, institutional and leisure projects.

## Legal Adviser



Saha & Ray, Advocates, Kolkata, is a premier law firm specialising in real estate and property laws. Armed with international affiliations and global terms of reference, the firm is headed by Avik Saha and Jayati Ray.

# SIDDHA

Home is where you discover the real you. Siddha's aim is to develop high quality homes within your budget and add to your pleasant discoveries. Since its inception in 1986, Siddha has been crafting residential and commercial spaces with a difference, to make good living affordable in Kolkata, Jaipur, Mumbai and Bengaluru.

Siddha's perseverance and passion for quality homes drive it forward with every new project. Led by Group Chairman Chandra Prakash Jain and Group Managing Director Sanjay Jain, Siddha creates and sells high-quality housing in India.

Siddha believes that the magic of craftsmanship lies beyond the reality of construction. It is the ability to sculpt better lives by designing and crafting living spaces that sets Siddha apart.



## SIDDHA

Corporate Office  
Siddha Park 99A Park Street  
Kolkata 700016 India

Site  
33A Canal South Road  
Off EM Bypass  
Kolkata 700015 India  
E [sky@siddhagroup.com](mailto:sky@siddhagroup.com)  
W [siddhasky.com](http://siddhasky.com)

## SKYWALKS AT SIDDHA



HIRA/P/KOL/2018/000118  
[hira.wb.gov.in](http://hira.wb.gov.in)

All information, features and offerings in this handout are subject to change without notice. Photographs used in this handout are artist impressions for illustration purposes only and may not bear resemblance to actual features/offerings. This handout is not a legal offer or document.