



CORNERSTONE

022 0000 0000 | XXXrealty.com

MahaRERA Registration Number- P51700000000
<https://maharera.mahaonline.gov.in>



Site Address: S.G Barve Marg, Police Colony, Kurla, Mumbai, Maharashtra 400024.

Disclaimer: The images and other details herein are only indicative. The Promoter reserves the right to change any or all of these in the interest of the development, as per provision of law. Artist's impressions are used to illustrate amenities, specifications, images, and other details. Tolerance of +/- 3% is possible in the unit areas on account of design and construction variances. All brands stated are subject to final decision of the project architect. This electronic / printed material does not constitute an offer and/or contract of any type between the Promoter and the recipient. No booking or allotment shall be deemed to have been made on the basis of this electronic / printed material. Any Purchaser / Lessee of this development shall be governed by the terms and conditions of the agreement for sale / lease entered into between the parties, and no details mentioned in this electronic / printed material shall in any way govern such transactions unless as may be otherwise expressly provided in the agreement for sale/lease by the Promoter. The Promoter does not warrant or assume any liability or responsibility for the accuracy or completeness of any information contained herein. This electronic / printed material has been created keeping in mind the provisions of the Real Estate (Regulation and Development) Act, 2016 (RERA) applicable for projects in Maharashtra. You are required to verify all the details, including area, amenities, services, terms of sales and payments and other relevant terms independently with the Promoter's sales team only, by physically visiting the project site and the authorized website of RERA. You are requested NOT to visit any unauthorized or unverified website/broker (online / offline) to receive any information about any projects of the Promoter and/or its sister concerns. *Terms & Conditions Apply

EVERLASTING JOY THAT INSPIRES CHERISHED MOMENTS

Where Happiness Settles Like Sunlight.



Reference Image





A SENSE OF
TOGETHERNESS THAT GROWS
STRONGER WITH TIME

Where Warmth Fills Every Corner of Living.

SEAMLESS CONNECTIONS THAT KEEP LOVED ONES CLOSER

Where Love Lingers A Little Longer.



Reference Image

THE FOREVERMORE LIFE

A meaningful home is where joy brightens everyday living, togetherness deepens with time, and closeness feels effortless, life begins to feel richer in every moment. It becomes more than a way of living; it becomes a life that continues to give, with every tomorrow holding a little more joy.

An address built for The Forevermore Life.

PROJECTS HALLMARKS

G+19 STOREYED ICONIC TOWER

1 & 2 BHK WELL-CRAFTED HOMES

VIBRANT COMMERCIAL AND RETAIL SPACES

CURATED LIFESTYLE INDULGENCES

IN THE HEART OF KURLA

SURFACE CAR RAMP PARKING





WHERE FIRST IMPRESSIONS FEEL LIKE FOREVER

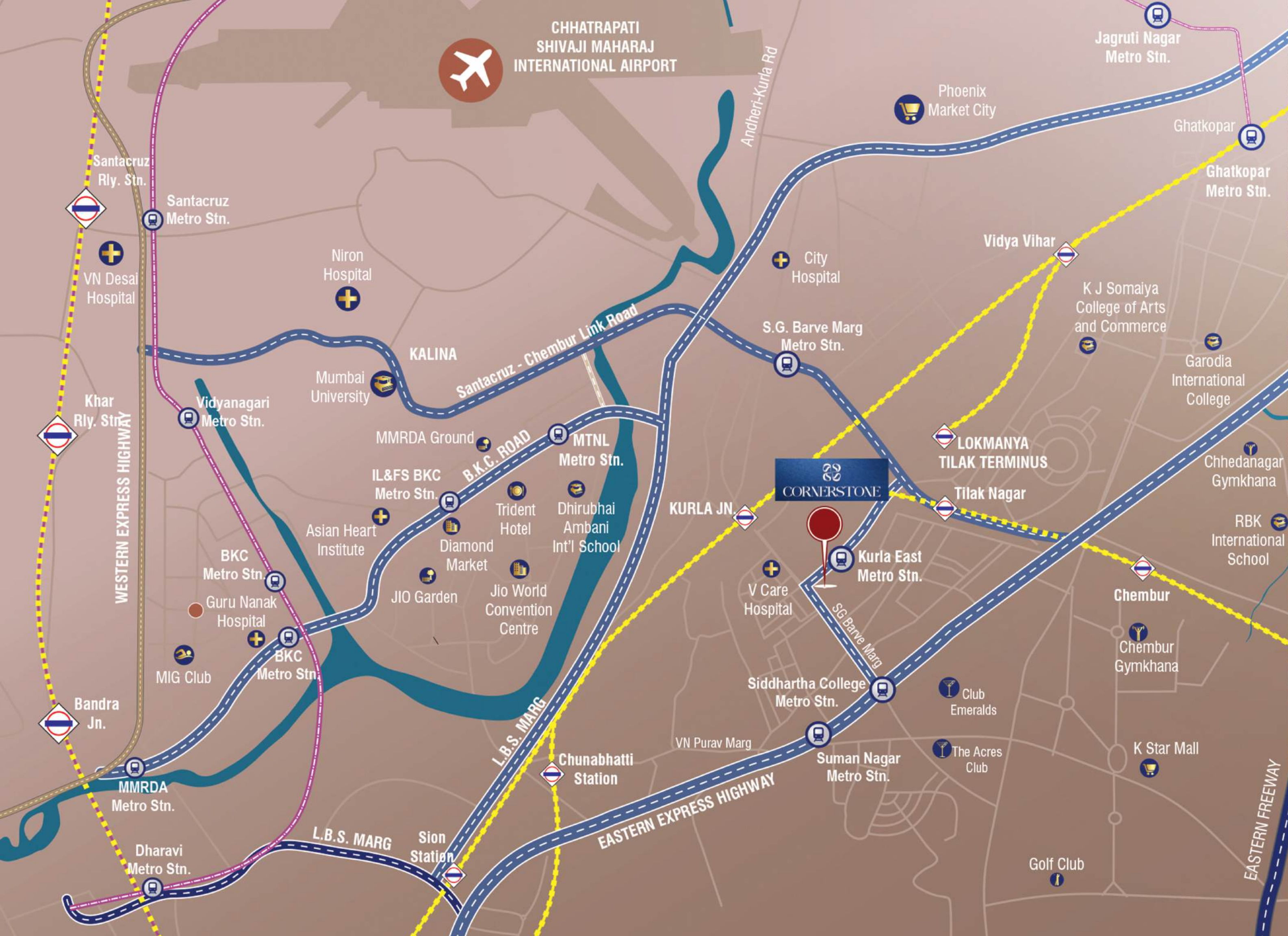
STEP INTO A GRAND ENTRANCE THAT
SETS THE TONE FOR EVERYTHING BEYOND.
THOUGHTFULLY DESIGNED, ELEGANTLY DETAILED.
THIS IS LUXURY THAT WELCOMES YOU HOME.

AN ICONIC LANDMARK FOR FOREVERMORE HAPPINESS

A thoughtfully envisioned address where contemporary homes meet vibrant retail and everyday convenience. Designed to bring comfort, connectivity, and community together, it places life's essentials within effortless reach. Here, living grows richer with time, a place shaped for The Forever more Life.




Artist's Impression



A COVETED PINCODE FOR FOREVERMORE PRIVILEGES

Located in the vibrant neighbourhood of Kurla, this address enjoys the advantage of being at one of the city's most connected crossroads. A major railway junction linking the Central and Harbour Lines, with key roads and upcoming metro access nearby, Kurla keeps the city close while evolving into a thriving residential and commercial hub.

A WELL-CONNECTED CITY TO FOREVERMORE CONVENIENCE

	CONNECTIVITY		
	SANTACRUZ CHEMBUR LINK ROAD	1 KM	
	LBS ROAD	2.5 KM	
	AIRPORT	15 KM	
	KURLA RAILWAY STATION	700 M	
	BKC	4.2 KM	
	EASTERN EXP. HIGHWAY	650 M	
	EASTERN FREEWAY	6.2 KM	
	PROPOSED 2B METRO LINE	300 M	
	SCHOOLS		
	ORCHID THE INTERNATIONAL SCHOOL	1.6 KM	
	SOMAIYA SCHOOL	2.3 KM	
	UNIVERSAL SCHOOL	3.5 KM	
	COLLEGES		
	K. J. SOMAIYA VASANTDADA PATIL COLLEGE	3.3 KM	
	DON BOSCO	1.8 KM	
		4.5 KM	
	MALLS & LEISURE		
	IMAX DOME	4.3 KM	
	PHOENIX MARKET CITY	4.2 KM	
	JIO WORLD	4.8 KM	
	K STAR MALL	2.5 KM	

A DEDICATED GYMNASIUM FOR FOREVERMORE FITNESS

For your everyday fitness and strength, a fully equipped gymnasium offers the perfect place to recharge and refocus. Designed for both energy and endurance, it brings modern workout essentials into a comfortable space where wellness becomes part of daily living, helping you stay active and balanced for The Forevermore Life.



KIDS PLAY AREA



Reference Image



Reference Image

YOGA DECK

GYMNASIUM



Reference Image

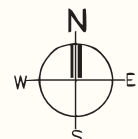


Reference Image



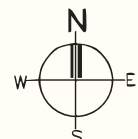
SENIOR CITIZEN AREA

GROUND FLOOR PLAN 1



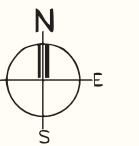
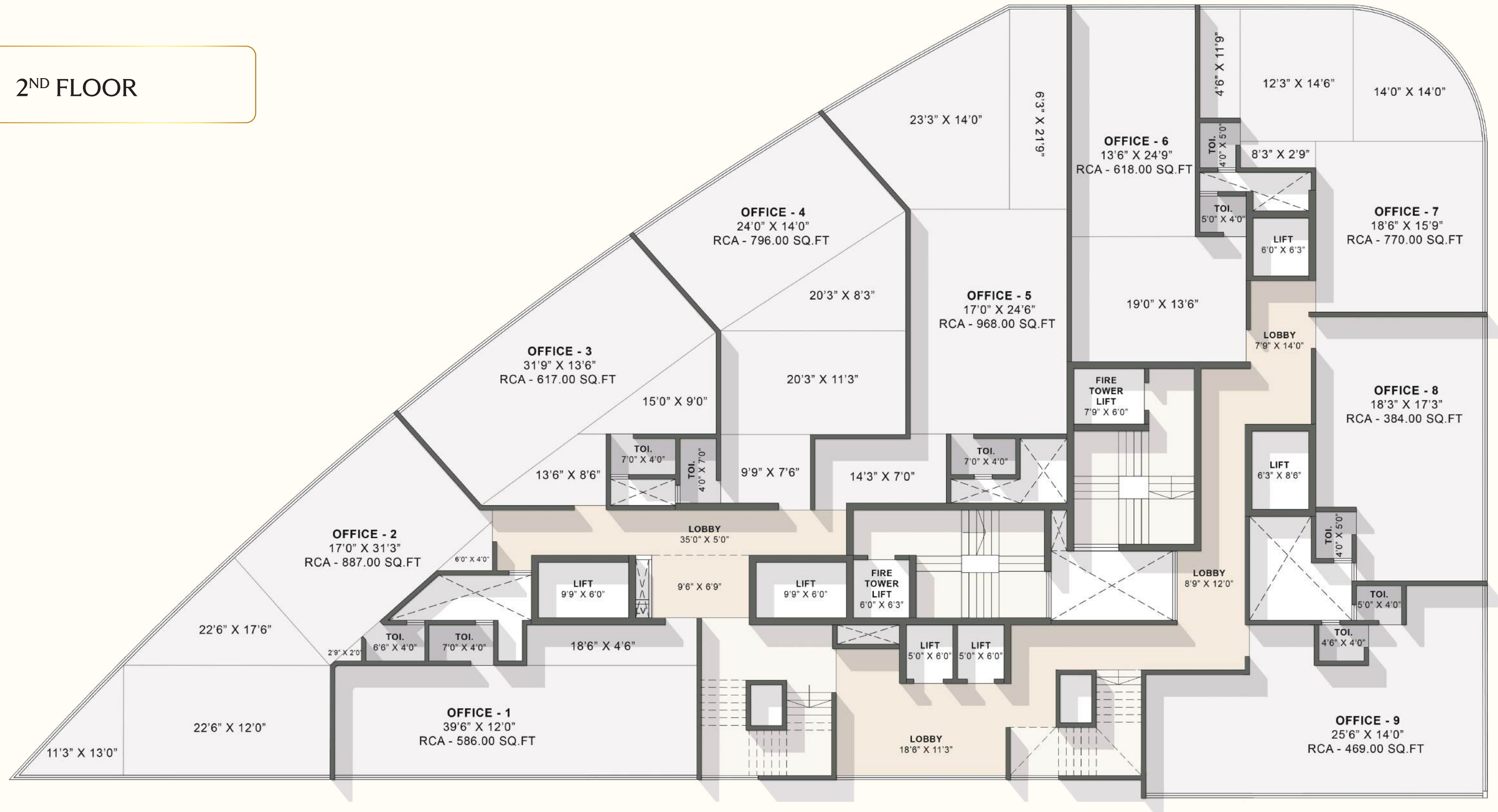
Disclaimer: Lorem ipsum dolor sit amet, consectetur adipiscing elit, sed diam nonummy nibh euismod tincidunt ut laoreet dolore magna aliquam erat volutpat. Ut wisi enim ad minim veniam, quis nostrud exerci tation ullamcorper suscipit lobortis nisl ut aliquip ex ea commodo consequat. Duis autem vel eum iriure dolor in hendrerit in vulputate velit esse molestie consequat, vel illum dolore eu feugiat nulla facilisis at vero eros et accumsan et iusto odio dignissim qui blandit praesent luptatum zzril delenit augue dui dolore te feugait nulla facilisi.

GROUND FLOOR PLAN 2

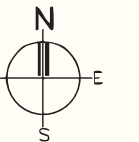
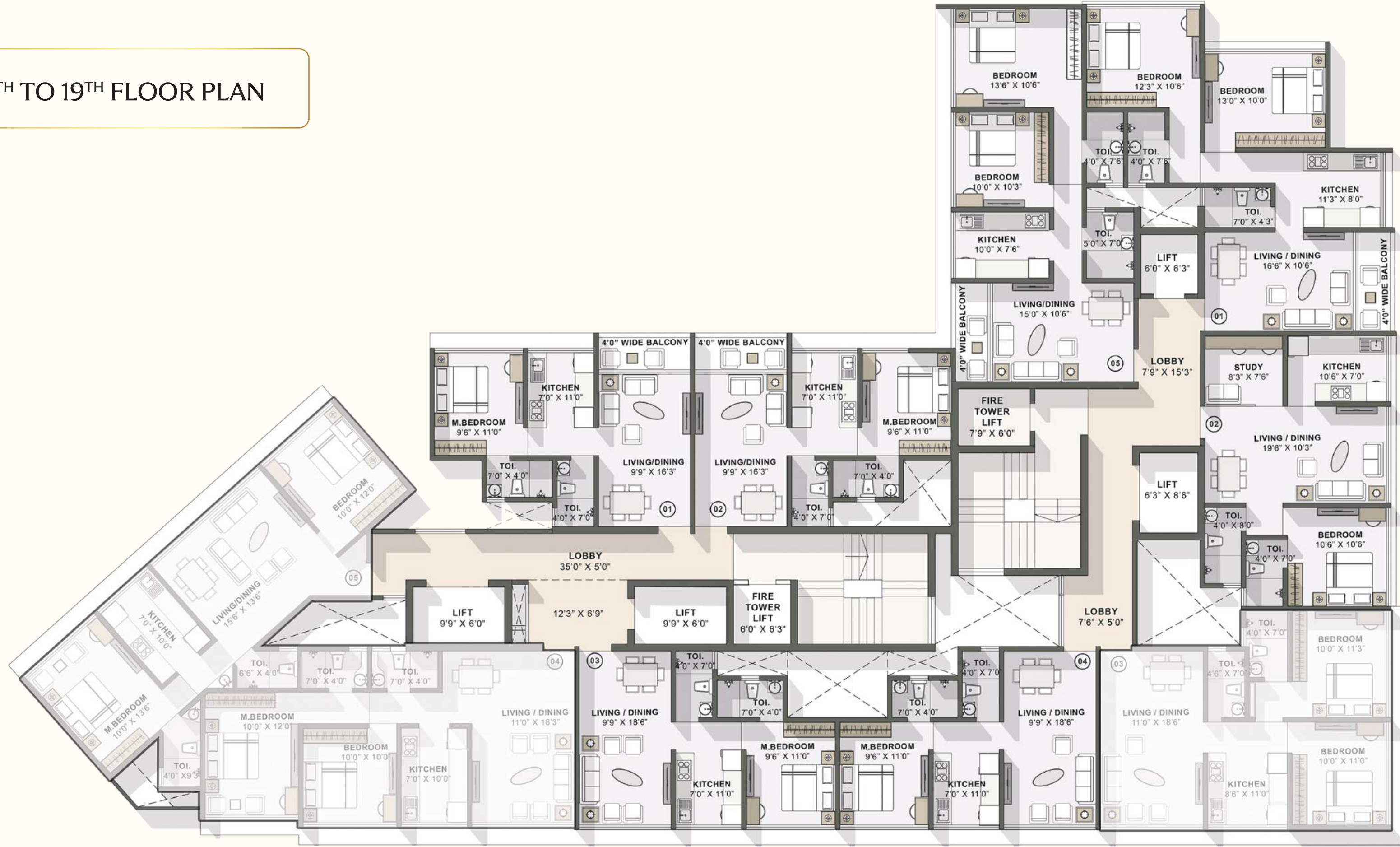


Disclaimer: Lorem ipsum dolor sit amet, consectetur adipiscing elit, sed diam nonummy nibh euismod tincidunt ut laoreet dolore magna aliquam erat volutpat. Ut wisi enim ad minim veniam, quis nostrud exerci tation ullamcorper suscipit lobortis nisl ut aliquip ex ea commodo consequat. Duis autem vel eum iriure dolor in hendrerit in vulputate velit esse molestie consequat, vel illum dolore eu feugiat nulla facilisis at vero eros et accumsan et iusto odio dignissim qui blandit praesent luptatum zzril delenit augue dui dolore te feugait nulla facilisi.

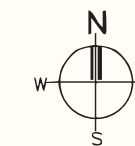
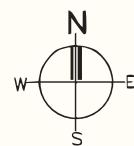
2ND FLOOR



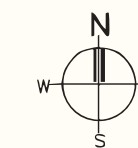
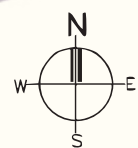
11TH TO 14TH AND 16TH TO 19TH FLOOR PLAN



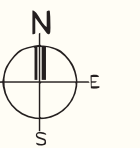
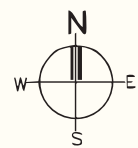
1 BHK



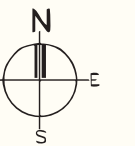
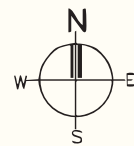
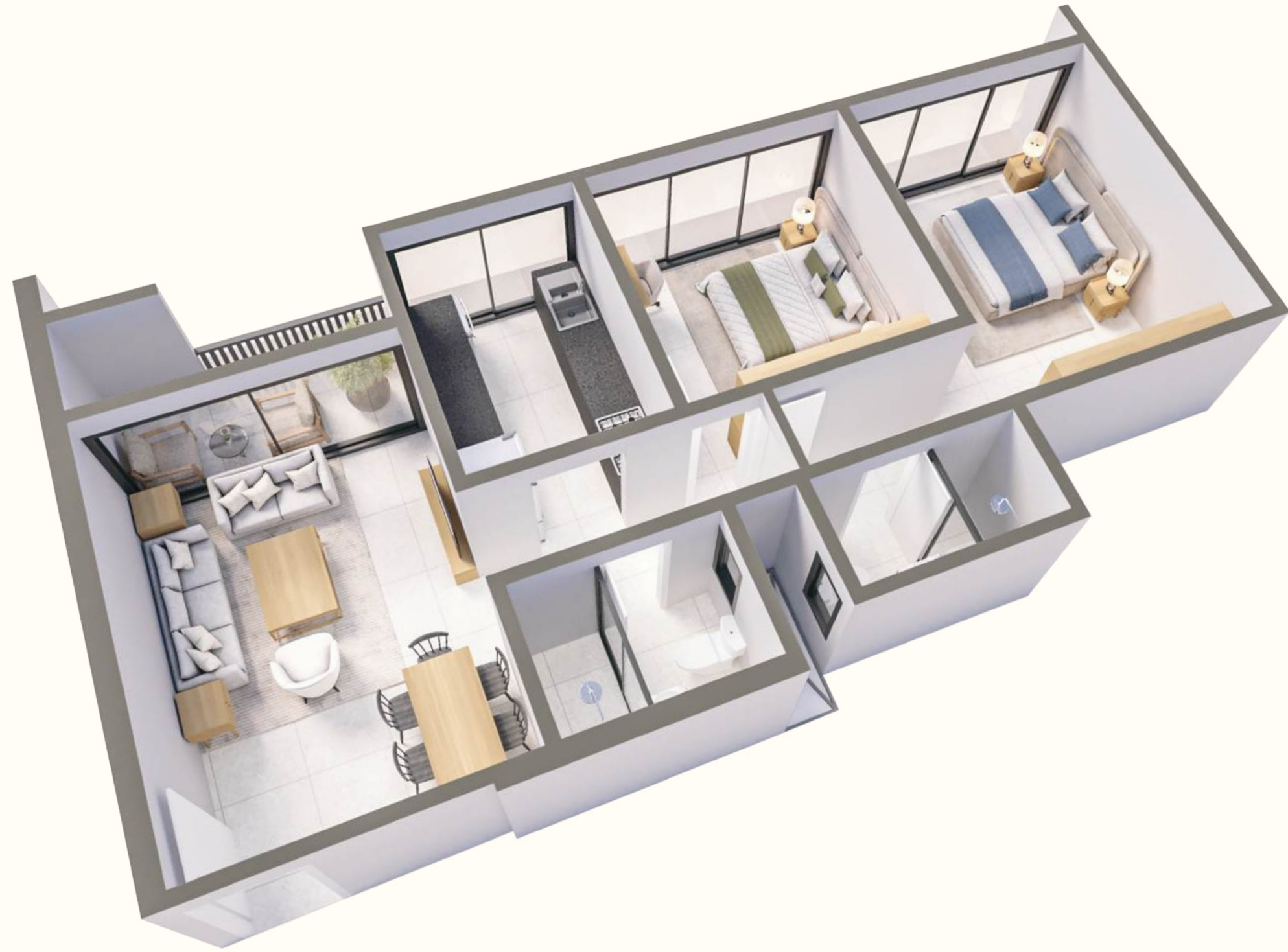
2 BHK



1 BHK



2 BHK





DISTINCTIVE FEATURES

- PREMIUM 1 & 2 BHK RESIDENCES
- GRAND DOUBLE - HEIGHT ENTRANCE LOBBY
- HIGH - SPEED AND ELEVATORS
- COVERED CAR PARKING

- FITNESS CENTRE
- PREMIUM BATH FITTINGS
- FLOOR - TO - CEILING HEIGHT UP TO 10 FT.
- VASTU - COMPLIANT & SPACIOUS RESIDENCES

- CCTV SURVEILLANCE, VIDEO DOOR
- PHONES & ADVANCED FIRE SAFETY
- EARTHQUAKE - RESISTANT STRUCTURE & FIRE - RESISTANT DOORS
- DESIGNER WALL TILES, VITRI@ED FLOORING & FRENCH WINDOWS
- LED LIGHTING & SAFE RAILINGS
- LIFT ACCESS UP TO THE TERRACE

A TRUSTED LEGACY TO FOREVERMORE TRUST

Behind Cornerstone stands the vision of the Happy Home Group, known for trust, thoughtful planning, and enduring value. With every project, the group creates more than structures, shaping homes where families grow and communities flourish. Guided by quality and integrity, their developments are designed to be cherished for generations, reflecting The Forevermore Life.

120+
PROJETS

9000+
HAPPY
FAMILIES

12+
MILLION SQ. FT.

