



PARADISE COVE
by Emerald Select

LIFE AT EASE. LIFE OF *bliss*

A decorative border of various green tropical leaves, including banana leaves and a small red flower, surrounds a central dark green rectangular area.

PARADISE COVE
by Emerald Select

WHERE
EVERY DAY
FEELS LIKE A

vacation

EMBRACE
THE PLEASURES
AND PRIVILEGES
OF

resort living



CALM

retreat

OPULENT

greens

VIBRANT

amenities

EXCLUSIVE

address

PARADISE COVE

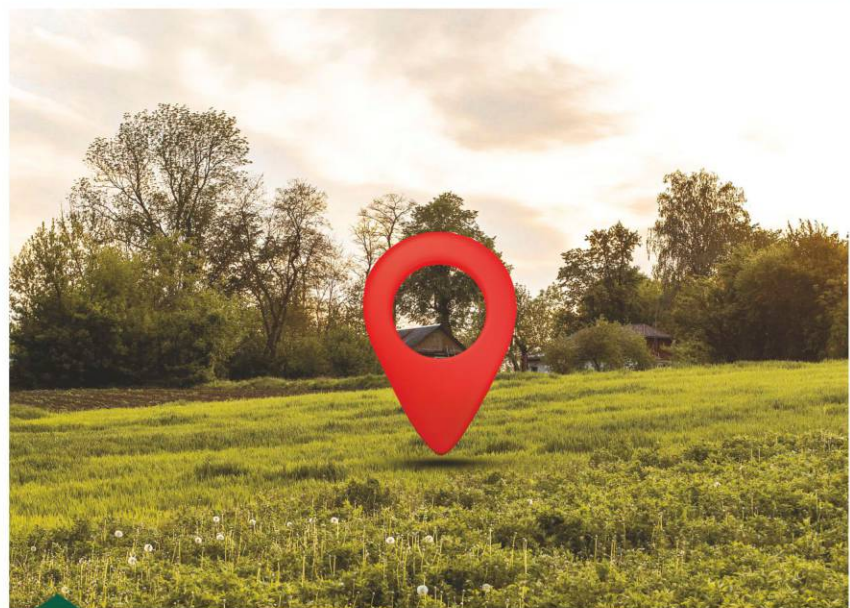
by **Emerald Select**

78 PREMIUM MANSION SIZED PLOTS | 25 ACRES

THE BEST
Amenities
YOU COULD ASK FOR



PROJECT *highlights*



Exclusively planned large-sized plotted development, strategically located off the bypass



Situated on a 75m wide front road with a 30m wide road at the back

A like-minded community for harmonious living



Secure gated development ensuring enhanced safety and privacy



Individual plot demarcation with separate gates and boundary walls for each plot



High-quality infrastructure and development

An ideal choice for a peaceful second-home lifestyle



Perfectly suited for country house buyers planning to build their homes over the next 5 years



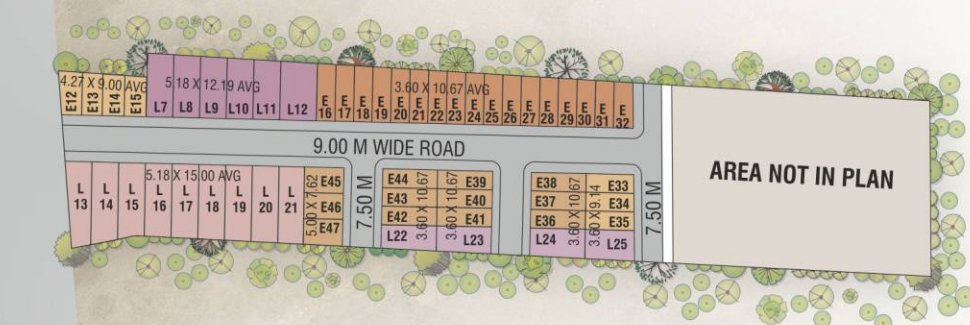
PARADISE COVE

PARADISE COVE



LAYOUT PLAN

- | | |
|-----------------------------------|---|
| 01 Entrance Plaza | 12 HI Pylon |
| 02 Mounds With Gravel & Sculpture | 13 Cycle Track |
| 03 Raised Lawn | 14 Maze |
| 04 Fountain | 15 Tree Court For Senior Citizens |
| 05 Waterfall | 16 Tree Court |
| 06 Multipurpose Lawn | 17 Stepped Seating |
| 07 Amphitheater | 18 Multipurpose Court |
| 08 Stepped Mound | 19 Pickleball Court |
| 09 Walkway | 20 Seat With Frames |
| 10 Raised Gazebo | 21 Kids' Play Area And Gym with EPDM flooring |
| 11 Earth Mound | 22 Tree Court With Seating |



LEGEND

COLOUR	TYPE	AVERAGE SIZE
[Light Orange]	EWS	12' 0" X 30' 0"
[Orange]	EWS	16' 0" X 25' 0"
[Dark Orange]	EWS	17' 0" X 50' 0"
[Light Purple]	LIG	16' 0" X 35' 0"
[Purple]	LIG	17' 0" X 40' 0"
[Dark Purple]	LIG	17' 0" X 50' 0"
[Light Brown]	PLOTS	60' 0" X 35' 0"
[Brown]	PLOTS	80' 0" X 50' 0"
[Light Yellow]	PLOTS	110' 0" X 45' 0"
[Yellow]	PLOTS	116' 0" X 48' 0"
[Light Green]	PLOTS	60' 0" X 110' 0"
[Green]	PLOTS	60' 0" X 124' 0"
[Light Green]	PLOTS	60' 0" X 150' 0"
[Green]	PLOTS	60' 0" X 153' 0"
[Dark Green]	PLOTS	72' 0" X 156' 0"



CALM *retreat*

WHERE TIME SLOWS, AND WORRIES FADE.

A GATEWAY
CARVED IN
PRISTINE

nature

Welcome to Paradise Cove. A place where life exhales softly and the world slows to a gentle rhythm. Tucked away in the quiet cradle of nature, this is where hearts return, weekends bloom, and living feels like a long, soothing breath.

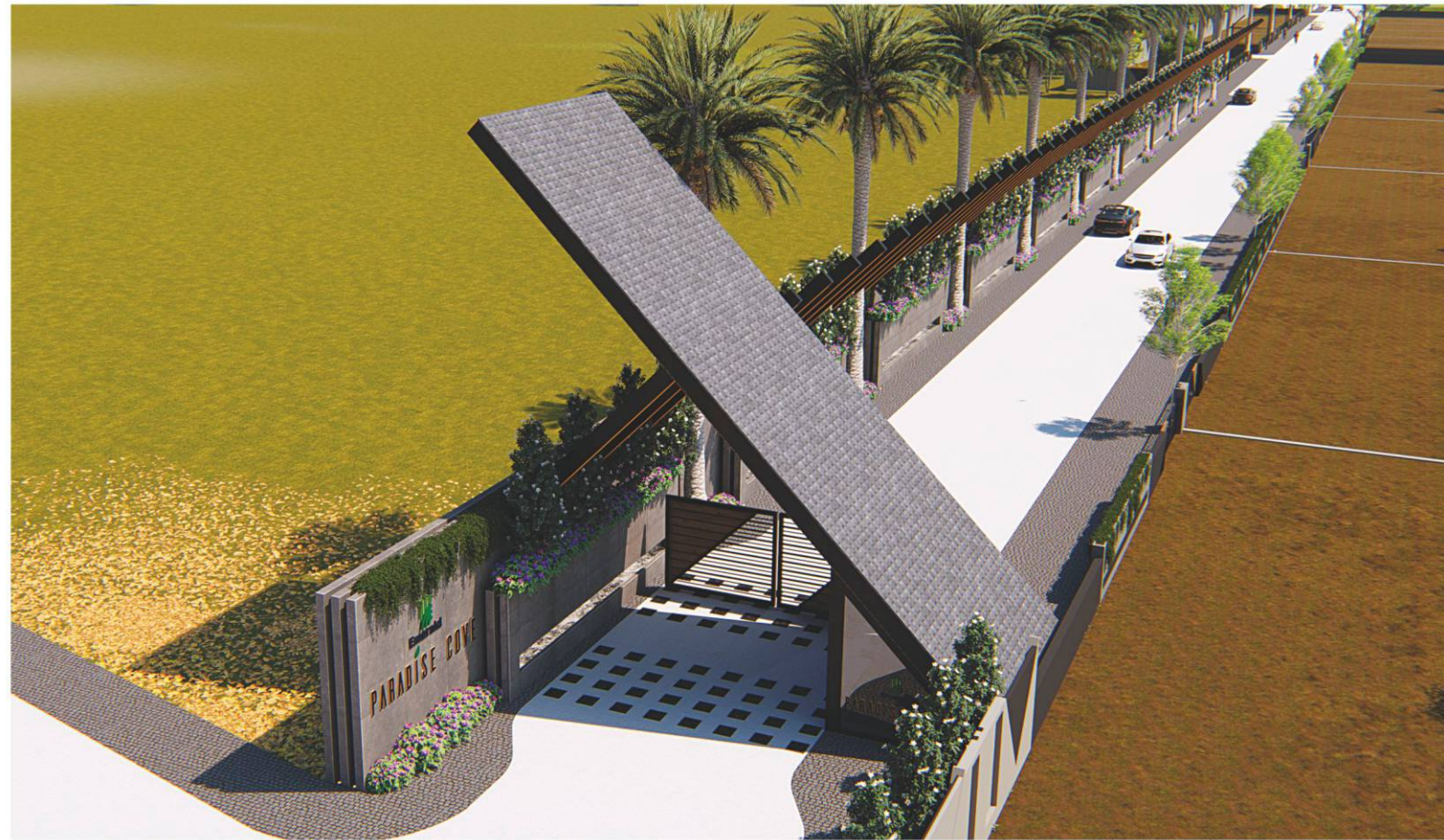
A second home; but your first escape.

PARADISE COVE





A GRAND WELCOME
TO A QUIETER
Life





RELAX
RECONNECT
rejuvenate





OPULENT *greens*

WHERE NATURE LEADS, LIFE FOLLOWS.



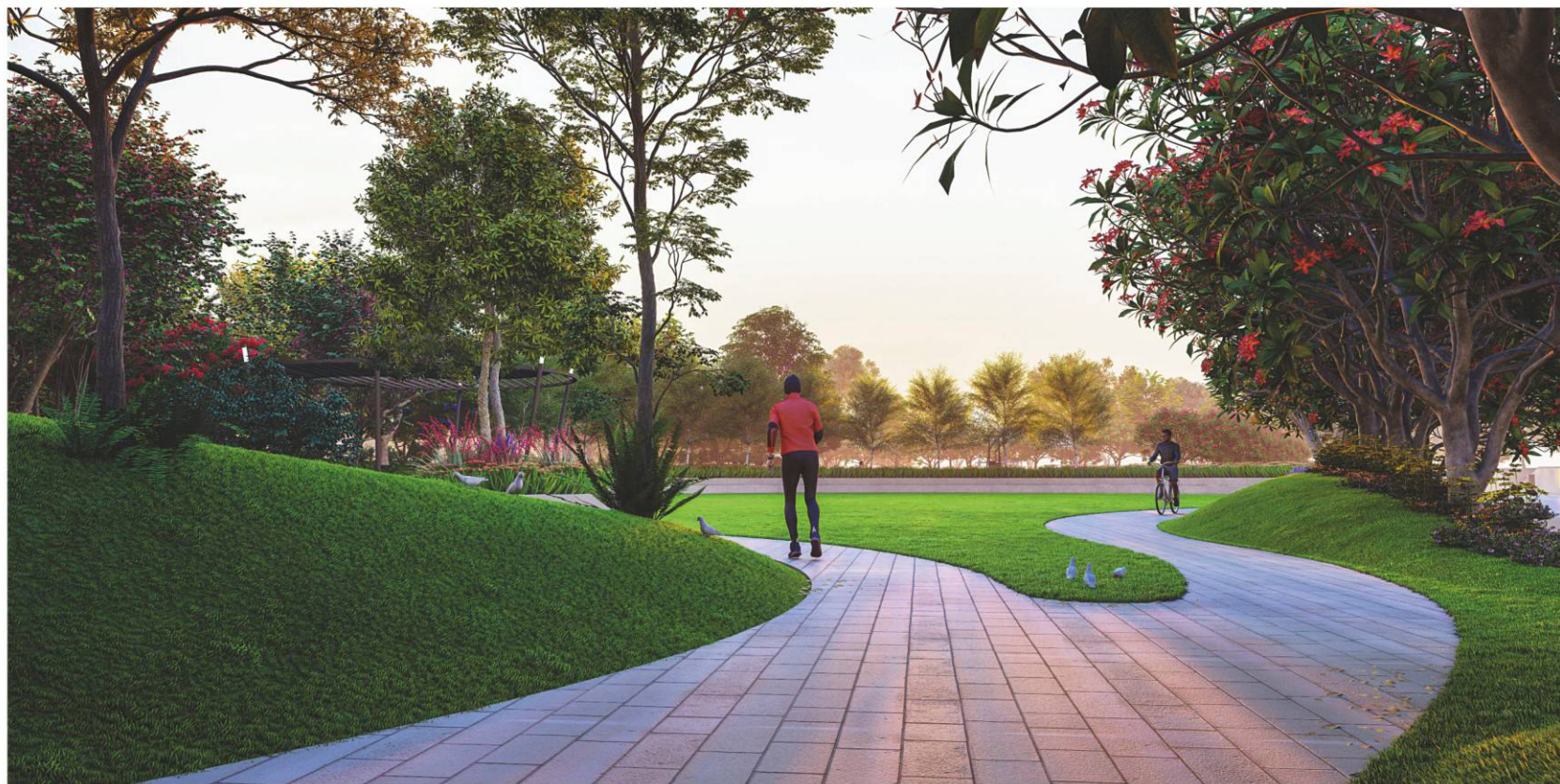
WRAPPED IN
GREENS,
ROOTED IN
peace

At Paradise Cove,
nature surrounds you in every direction.
Wide open green spaces, lush trees, landscaped pathways,
and fresh air create an environment that feels instantly lighter.
This is a home that keeps you close to nature,
and even closer to peace.



THE FLOWERING
LANDSCAPES
WHISPER TRANQUIL

serenity





VIBRANT *amenities*

WHERE SPACES NURTURE MIND, BODY AND SOUL.



THE SPIRIT
OF SPORTS MEETS
THE PASSION OF

play

Our thoughtfully designed sports amenities invite you to stay active, challenge yourself, and savor every moment of movement. From well-laid tennis and basketball courts to jogging and cycling tracks, every facility is crafted to inspire energy and wellness.





STAYING FIT
BECOMES FUN AND
effortless



Whether it's an early-morning routine, an evening burst of activity,
or a weekend spent outdoors with family and friends,
these spaces encourage you to stay fit, refreshed, and connected.





WHERE
EVERY CORNER
SPARKS
happiness



AMENITIES
THAT TRULY ENRICH

lifestyle



Walking track



Long resort style
entrance gate



Multipurpose
play courts tennis,
volleyball, basketball



Gazebo



Green maze



Tot lots /
Kids' play area



Stepped seating



Senior citizen
sitting area



Green mounds



Pickleball court



Multipurpose lawn



Cycle /
jogging track



Large water
feature



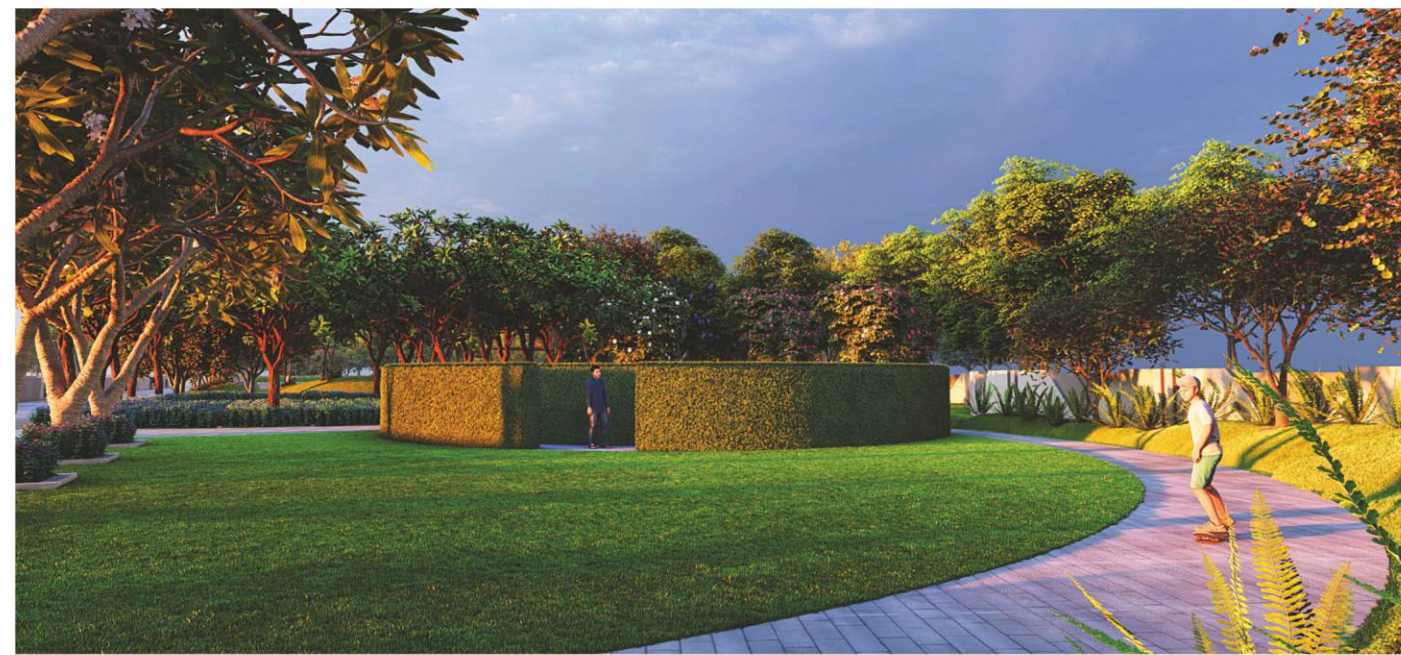
Badminton court



Amphitheatre



Pergola / trellis
and sittings





EXCLUSIVE *address*

WHERE CITY'S PULSE MEETS SERENE LIVING



SET IN NATURE,
YET CLOSE TO
everything

Paradise Cove offers the perfect balance between calm and convenience. Here, you enjoy the best of both worlds; a peaceful, rejuvenating environment, without ever compromising on connectivity or lifestyle.

2 mins* from Bypass Road | 10 mins* from Agra Bombay (AB) Road

Nipania	- 10 km	Indore Junction	- 20 km
Palasia	- 18 km	Devi Ahilyabai Holkar International Airport	- 27 km
Vijay Nagar	- 14 km		





GIVING LUXURY A MEANING THE EMERALD WAY!

Since the first blueprint, we at Emerald Developers have been redefining the meaning of an elevated lifestyle by uniting unique artistic design with practical elegance. Our studios are spaces where like-minded people come together to shape joy and togetherness in brick and mortar.

We don't take pride in merely envisioning modern architecture, or in examining every inch of space with eagle-eyed precision, or even in creating a seamless blend of luxury and simplicity. Our true pride lies in the smile on our customers' faces when they see their vision come alive, watching their dream space take shape into reality.



Mr. Vinod Agarwal
Chairman
Emerald Developers



Mr. Tapan Agarwal
CEO
Emerald Developers

As we unveil our newest residential masterpiece in Indore, we are proud to set a new benchmark in premium living.

This development reflects our unwavering commitment to creating a sanctuary of tranquility, verdant greenery, and expansive living, offering families a lifestyle that rivals the serenity and sophistication of a luxury resort.

Every corner of this community is thoughtfully designed, with generous spaces, impeccable attention to detail, and the signature touch of elegance that defines our brand. Whether you seek privacy, a connection with nature, or a distinguished social address, you will find a home that elevates your aspirations.

Step into a new chapter of serene living - crafted with passion, built with excellence, and dedicated entirely to you.



TNCP NO: क्र. / 5435 / SP-I-32 / 24 / नगरी / 2024
DEVELOPMENT PERMISSION NO: क्रमांक INDDP0320250002

CORPORATE ADDRESS : Agarwal House, 5, Yeshwant Colony, Indore - 452003 (M.P.)

SITE ADDRESS : Village - Panod, Tehsil-Kanadiya, District - Indore - 453771 (M.P.)

contact@emeralddevelopers.com | www.emeralddevelopers.com

PHONE : +91-76106-76106

MP RERA : P-IND-25-5906

Registered as Exotica Premium

OUR ASSOCIATES

ARCHITECT: **GENESIS DESIGN STUDIO**

STRUCTURE CONSULTANT: **PYRAMID CONSULTANT**

LANDSCAPE CONSULTANT: **ARSHAD & ASSOCIATES**

SERVICES CONSULTANT: **PRAMESH KAUL & ASSOCIATES**

ELECTRICAL CONSULTANT: **TRIUMPH DESIGN**

Disclaimer: All designs, specifications, dimensions, layouts, amenities, and prices shown in this brochure are tentative and subject to change as per statutory approvals and developer discretion. Visuals are artistic impressions and may vary from actual construction. This brochure is not a legal document and does not form part of any offer or contract.



Emerald

Crafting Imagination Into Realty

A VINOD AGARWAL ENTERPRISE