

THE ICONIC  
STANDARD *of*  
LIVING

 CODENAME  
LIGHTHOUSE

 HADAPSAR SQUARE

# STEP ABOVE THE CHAOS

EXPERIENCE ELEVATED LIVING WITH

INCOMPARABLE



INTERIORS



LIFESTYLE



VIEWS

LIVE CONNECTED WITH



25+

INSTITUTES



10+

MALLS



10+

HOSPITALS



10+

BUSINESS PARKS



30+

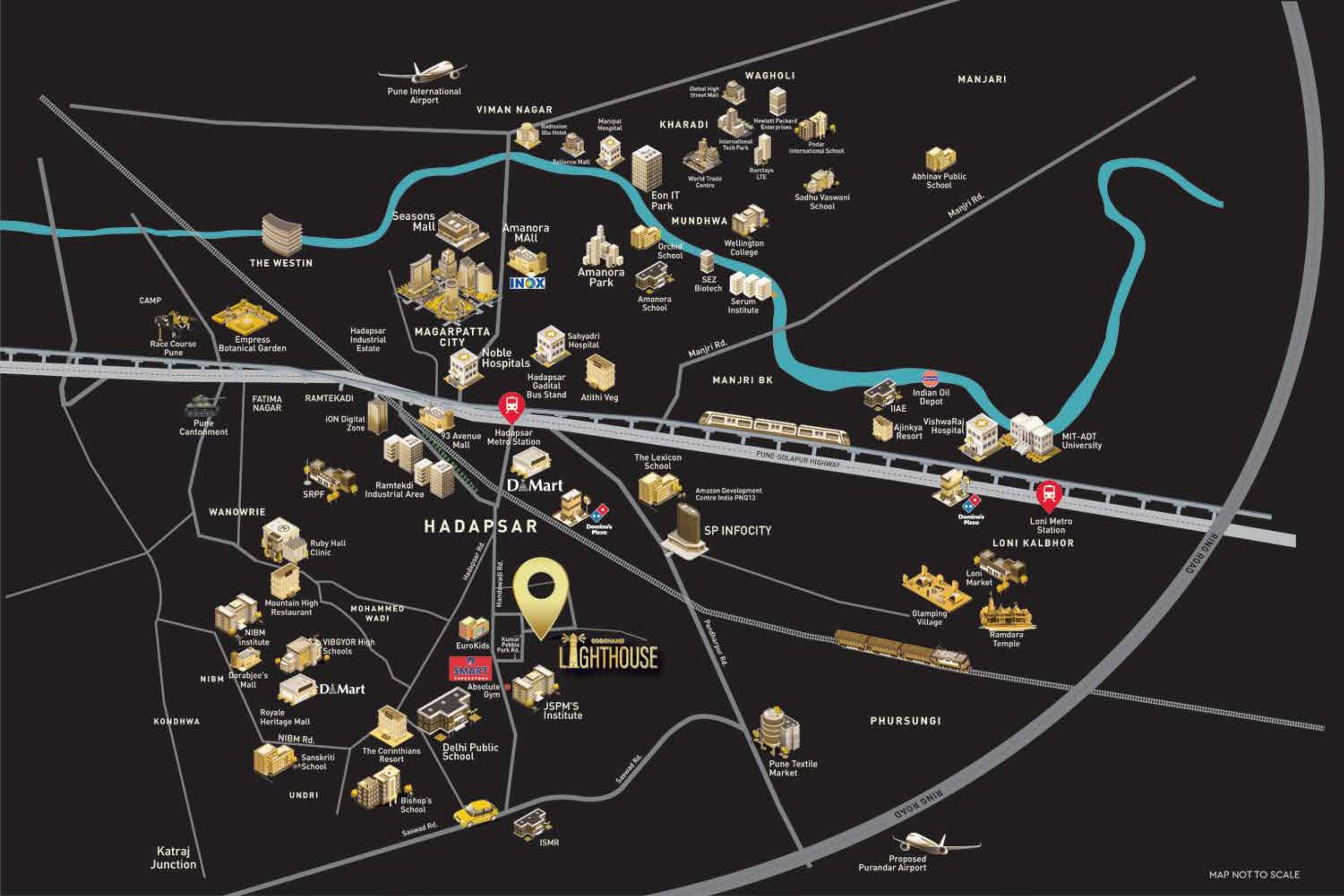
RESTAURANTS

# LIVING AT ITS MOST EXQUISITE

Immerse yourself in breathtaking panoramic views of the city, where every corner of your home is meticulously designed to offer expansive, thoughtfully planned spaces. The interiors are a masterpiece of mindful craftsmanship, blending elegance and seamless functionality.

At the heart of Codename Lighthouse is the captivating Cosmos Club, an exclusive sanctuary offering a plethora of premium amenities that cater to your every desire.

This is merely the beginning of what elevates Codename Lighthouse to the status of an iconic landmark, setting a new standard for premium living.



Pune International Airport

VIMAN NAGAR

WAGHOLI

MANJARI

KHARADI

MUNDHWA

Manjri Rd.

Manjri Rd.

THE WESTIN

Seasons Mall

Amanora Mall

Amanora Park

Eon IT Park

Orchid School

Wellington College

SEZ Biotech

Serum Institute

Abhinav Public School

Sadhu Vaswani School

CAMP

Race Course Pune

Empress Botanical Garden

Hadapsar Industrial Estate

MAGARPATTA CITY

Noble Hospitals

Sahyadri Hospital

Atithi Veg

MANJRI BK

Indian Oil Depot

IIAE

Ajinkya Resort

VishwaRaj Hospital

MIT-ADT University

Pune Cantonment

FATIMA NAGAR

RAMTEKADI

ION Digital Zone

93 Avenue Mall

Hadapsar Metro Station

D Mart

The Lexicon School

Amazon Development Centre India PNG13

SP INFOCITY

Domino's Pizza

Loni Metro Station

LONI KALBHOR

WANOWRIE

SRPF

Ramtekdi Industrial Area

Hadapsar Rd.

Handewadi Rd.

Domino's Pizza

Manjri Rd.

Pune Solapur Highway

Domino's Pizza

Loni Market

Glamping Village

Ramdara Temple

Ruby Hall Clinic

Mountain High Restaurant

NIBM Institute

VIBGYOR High Schools

EuroKids

Kumar Pabbto Park Rd.

Godhams Lighthouse

Absolute Gym

JSPM'S Institute

Manjri Rd.

Pune Solapur Highway

Manjri Rd.

NIBM Dorabjee's Mall

Royale Heritage Mall

NIBM Rd.

Sanskriti School

The Corinthians Resort

Delhi Public School

Sawad Rd.

Sawad Rd.

Pune Textile Market

Phursungi

Phursungi

KONDHWA

NIBM Institute

D Mart

Smart Superstore

Absolute Gym

JSPM'S Institute

Sawad Rd.

Sawad Rd.

Pune Textile Market

Phursungi

Phursungi

UNDRI

Bishop's School

ISMR

Sawad Rd.

Sawad Rd.

Pune Textile Market

Phursungi

Phursungi

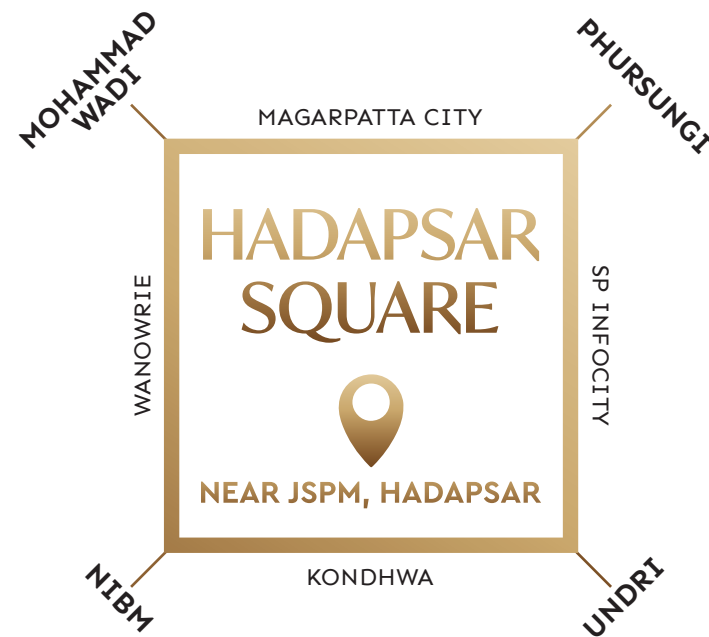
Katraj Junction



Proposed Purandar Airport

MAP NOT TO SCALE

# PUNE'S MOST COVETED ADDRESS



As the burgeoning growth epicenter of East Pune, Hadapsar Square stands poised at the heart of a transformative urban landscape. This vibrant locale is not just a place to live, but a statement of aspiration and sophistication.

Hadapsar Square is set to redefine modern living with its unparalleled connectivity and future-ready infrastructure. The strategic development of the Katraj-Kondhwa Road promises seamless accessibility, while the proximity to the ambitious 173 Km Ring Road further enhances its strategic importance.

Complementing these advancements, the PMC City Development Plan (CDP-41) is ushering in a new era of urbanization, ensuring that Hadapsar Square evolves into a thriving hub of contemporary living.

Hadapsar Square invites you to experience a lifestyle that seamlessly blends modern convenience with future-forward thinking. Here, each day is a step towards elevated living, surrounded by unmatched connectivity and innovative infrastructure.

# STEP ABOVE THE CHAOS

As the tallest tower in Hadapsar Square, Codename Lighthouse stands as a symbol of unparalleled elegance and prestige, reshaping the skyline of Hadapsar Square with its majestic presence.

Imagine beginning each day with a panoramic canvas of sunrise hues stretching across the horizon, or unwinding in the evening as the city lights below form a constellation of brilliance. Here, your home offers more than just a view—it provides a spectacle of sublime beauty, a daily escape to tranquility above the city's chaos.

At Codename Lighthouse, you're not merely acquiring a residence; you're securing a haven of sophistication and exclusivity. Embrace a lifestyle where every glance out of your window reveals an ever-changing masterpiece, and each moment is bathed in the serene glow of unparalleled luxury.





ARCHITECTURAL RENDITION



ARCHITECTURAL RENDITION



# YOUR PRIVATE PIECE OF SKY

Rising majestically, our G+29 floor marvel offers unparalleled views that stretch beyond the horizon, creating an oasis of tranquility and exclusivity high above the cityscape.

From the elevated vantage point of our podium, experience the breathtaking panorama that seamlessly blends the urban skyline with the natural beauty of the surroundings. Enjoy the refreshing, crisp air that circulates freely at higher altitudes, offering exceptional ventilation. Experience cleaner air and a healthier environment away from urban smog, with reduced pollution. Relish the peace and seclusion offered by fewer disturbances, providing ultimate privacy. Benefit from ample sunlight throughout the day, enhancing your living spaces with abundant natural light.

Secure your place in the sky and enjoy the myriad benefits of a high-floor residence.

# AN ICONIC ENTRANCE

Are you ready to experience an unparalleled lifestyle from the moment you arrive? Step through our iconic entrance—a majestic gateway that promises both security and sophistication, setting the stage for an extraordinary living experience.

This grand entrance offers your first glimpse into a world of elegance and comfort. Embrace the prestige and allure that await you inside.



ENTRY EXIT WITH SECURITY  
CABIN & BOOM BARRIER



WAITING  
AREA



DROP-OFF  
LOBBY



MAJESTIC DOUBLE HEIGHT  
LOBBIES FOR EACH TOWER



WELCOMING LANDSCAPE  
WATER BODY



ENTRANCE  
PLAZA



MULTI LEVEL  
PARKING



EV Charging  
Point



- 01 ENTRY/EXIT WITH WELCOMING WATERBODY
- 02 WATCHMAN CABIN
- 03 WAITING AREA
- 04 ENTRANCE PLAZA
- 05 DROP-OFF POINT
- 06 LINK BRIDGE
- 07 PAVILION
- 08 DECK
- 09 PARTY LAWN
- 10 PERFORMANCE STAGE
- 11 AMPHITHEATRE
- 12 JACUZZI
- 13 SWIMMING POOL
- 14 KIDS POOL
- 15 BBQ PAVILION
- 16 SAND PIT
- 17 KIDS PLAY AREA
- 18 SKATING RINK
- 19 YOUTH CORNER
- 20 HERB GARDEN
- 21 COMMUNITY GARDEN
- 22 MULTIPURPOSE DECK
- 23 TOT LOT
- 24 READING CORNER
- 25 SPICE GARDEN
- 26 FAMILY CORNER
- 27 YOGA DECK
- 28 SUNKEN LOUNGE
- 29 POOL BAR
- 30 LOUNGE DECK
- 31 CLUB HOUSE WITH INDOOR AND TERRACE AMENITIES
- 32 ACTIVITY LAWN
- 33 OUTDOOR FITNESS GYM
- 34 AROMA GARDEN
- 35 MEDITATION CORNER
- 36 GRAFFITI CORNER
- 37 INDOOR BADMINTON COURT IN MLCP

# ICONIC EXPERIENCES

Presenting an opportunity that will light up your near future. A residential haven where you can enjoy an Iconic Lifestyle.

A chance to take your life beyond the mundane with truly delightful spaces. Wholesome experiences curated by KUMAR WORLD



**57+**  
YEARS OF LEGACY

**40,000+**  
HAPPY FAMILIES

**35+**  
MILLION SQ.FT. OF DEVELOPMENT

**135+**  
PROJECTS DELIVERED

## An Iconic Landmark Envisioned by Internationally Renowned Architects

### TRIIIJE

Specialised in Civic Amenities Design

Remarkable Projects in Asia, Middle East & Europe

### SCI Architects, Singapore, Asia

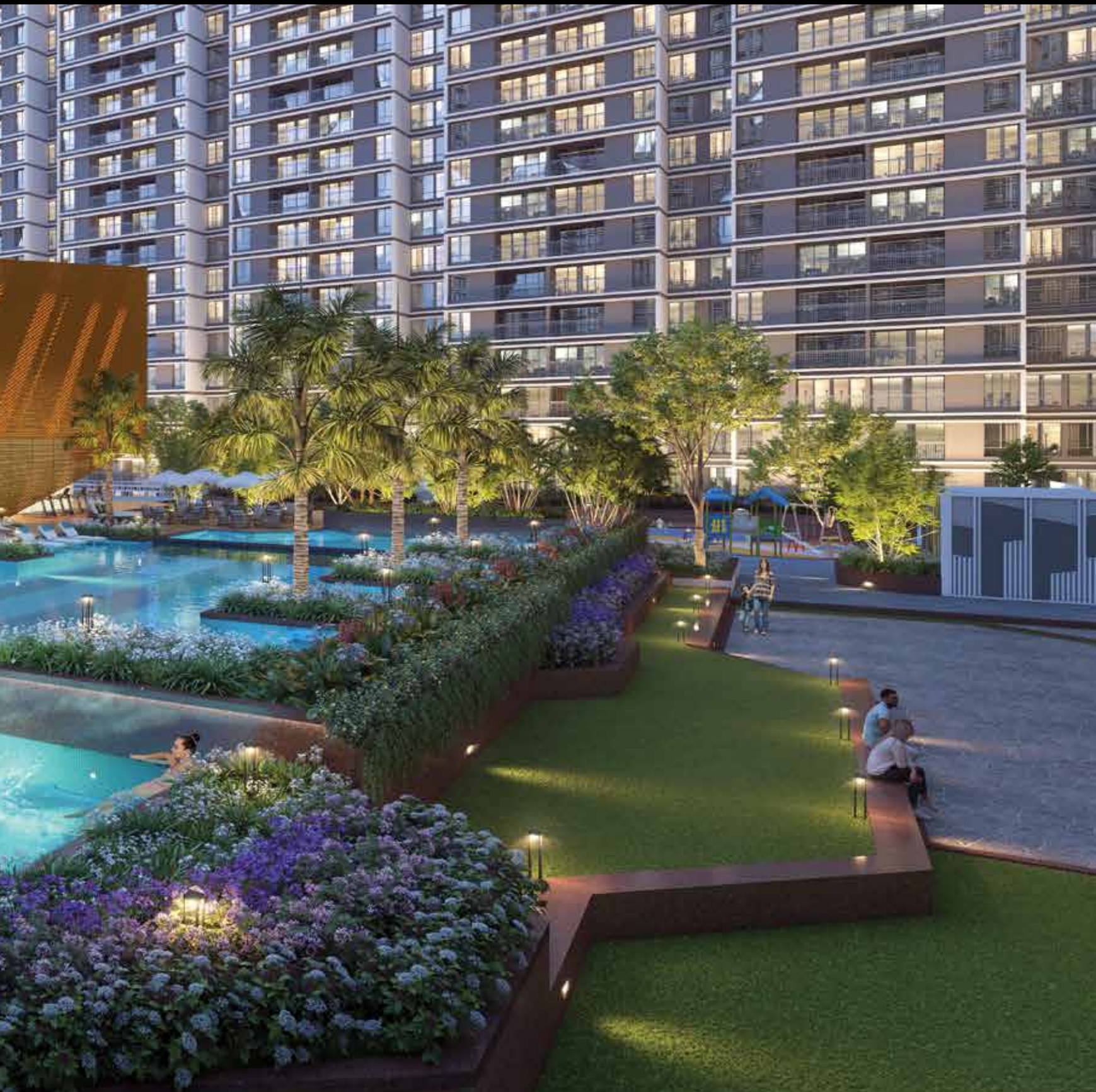
Studios in 7 countries

# ICONIC GETAWAY

Join the exclusive Cosmos Club,  
where you can unwind and socialize  
in a setting designed for the elite.  
From leisure to luxury, it's your  
personal retreat.



ARCHITECTURAL RENDITION



THE  
**COSMOS**  
CLUB

INDOOR AMENITIES



MULTIPURPOSE  
HALL



AEROBICS &  
DANCE



SPA



CAFE



CRÈCHE



LIBRARY

# LIVELY RETREATS



YOUTH CORNER



SKATING RINK



MULTIPURPOSE DECK



FAMILY CORNER



PARTY LAWN WITH DECK



ACTIVITY LAWN



KIDS POOL



POOL BAR



TOT LOT



SAND PIT



PERFORMANCE STAGE



SUNKEN LOUNGE

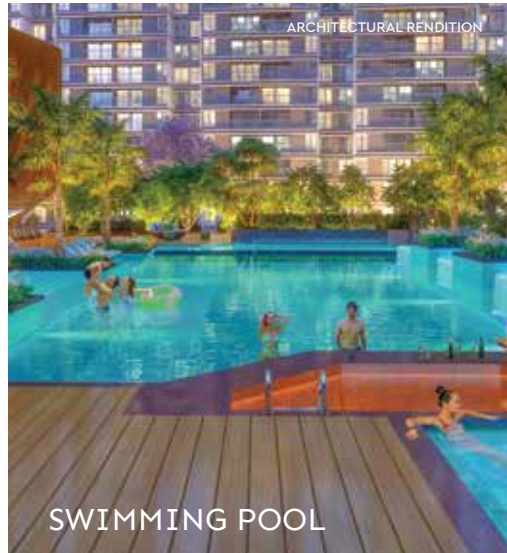


LOUNGE DECK



Pavilion

## PODIUM FLOOR



# CALM RETREATS



READING CORNER



SPICE GARDEN



HERB GARDEN



COMMUNITY GARDEN



MEDITATION CORNER



AMPHITHEATRE



GRAFFITI CORNER

REPRESENTATIVE IMAGES

THE  
COSMOS  
CLUB

INDOOR GAMES

FOOSBALL



SNOOKER



BOARD GAMES



TABLE TENNIS



AIR HOCKEY



GAME ZONE

REPRESENTATIVE IMAGES

CLUB HOUSE TERRACE AMENITIES

NET CRICKET PITCH



MULTIPURPOSE COURT



BASKETBALL COURT



TENNIS COURT

# ICONIC RESIDENCES

Delve into the realm of opulence, where homes are meticulously curated to seamlessly blend comfort and elegance. Each residence offers a sanctuary of refined sophistication



— UNVEILING LIMITED EDITION —

# Skyscape

SUITES

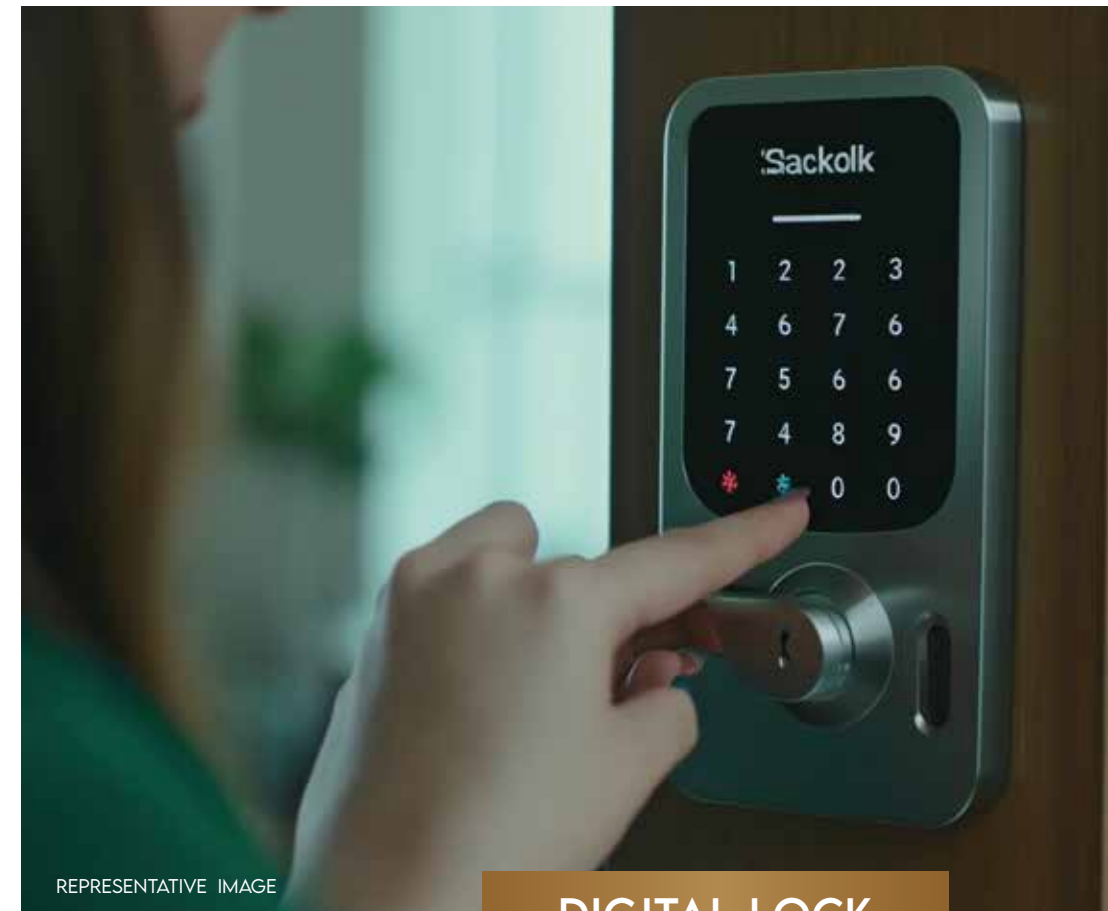
# LIMITED EDITION SKYSCAPE SUITES

Unlock a new level of luxury with our Limited Edition Skyscape Suites. Enjoy exclusive enhancements that elevate your living space, offering a blend of sophistication and modern conveniences. Discover the perfect harmony of premium features designed to enrich your lifestyle.



REPRESENTATIVE IMAGE

WOODEN FLOOR



REPRESENTATIVE IMAGE

DIGITAL LOCK



REPRESENTATIVE IMAGE

**MODULAR KITCHEN**

\*T & C APPLY

# ICONIC SPECIFICATIONS

## STRUCTURAL

- A-grade, earthquake-resistant construction
  - Gypsum punning on walls
  - Premium-grade paint for walls
  - Entire building painted in external-grade texture paint
  - Mild steel terrace railing
- 

## FLOORING

- Vitrified tile flooring in all rooms
  - 7' Glazed tiles for dado in toilets
- 

## ELECTRICAL

- Premium branded electrical fittings
- Concealed copper wiring with circuit breakers
- Adequate electrical points in all rooms
- Provision for inverter and intercom
- AC and TV electrical points provided for the master bedroom

## DOORS AND WINDOWS

- Pre Laminated main door
  - Flush door with stainless steel (SS) fittings for bedrooms
  - Water-resistant doors for the toilet
  - Aluminum sliding windows with mosquito mesh
- 

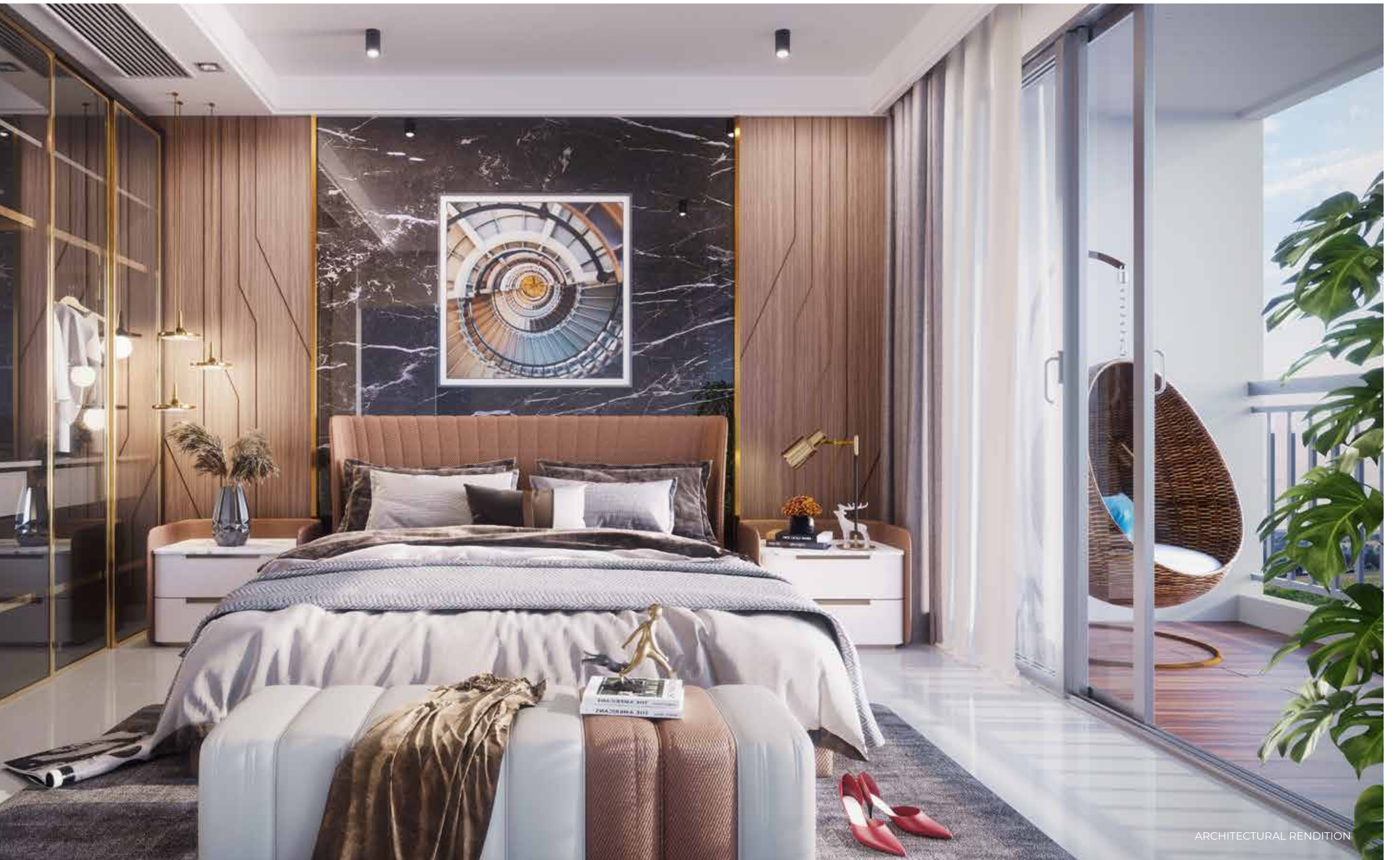
## KITCHEN

- Granite kitchen platform with stainless steel (SS) sink and tap
  - Plumbing provisions for water purifier and washing machine
  - Kitchen dado wall tiles with 1-foot height from the granite top
  - Provision for exhaust fan and refrigerator
- 

## SANITARY AND FITTINGS

- Premium range ceramic sanitary ware of a reputed brand
- Hot/cold shower mixer
- Concealed plumbing and suspended drainage system for toilets with false ceiling









# AN ICONIC LIFESTYLE RETREAT

Immerse yourself in the essence of shopping and door-step convenience as you explore a highstreet adorned with exclusive boutiques and premium brands.

This isn't just retail therapy-it's a statement of style and sophistication.



EXPERIENCE AN *Elevated* WORLD.

— UNVEILING LIMITED EDITION —

Skyscape

SUITES

AT



CODENAME

LIGHTHOUSE

HADAPSAR SQUARE

Disclaimer: The artist's impressions and stock images are used for representation purpose only. The flats offered for sale are unfurnished or otherwise stated/informed in writing. The sale of all the premises in the project shall be governed by terms and conditions incorporated in the Agreement for Sale.

