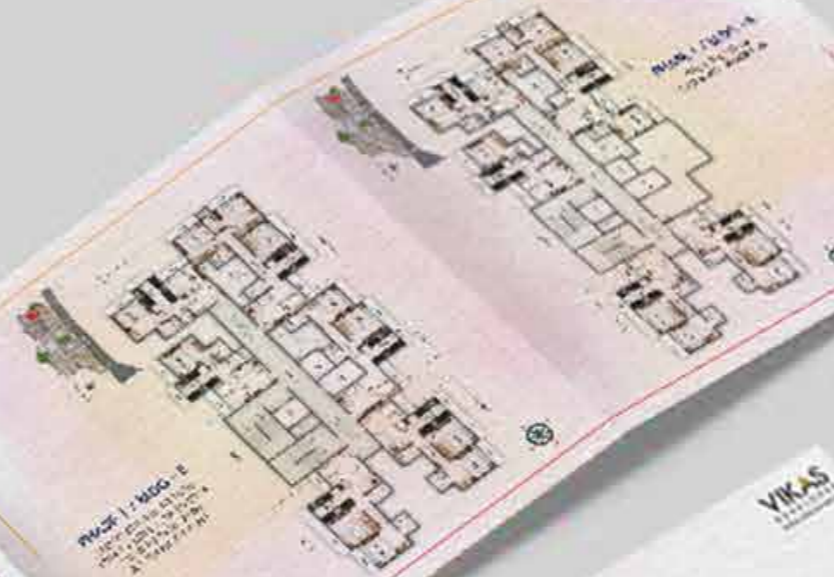




ENJOY YOUR REAL  
LIFE WITH  
20+ LIFESTYLE  
AMENITIES.



Phase 1 - Block - B  
1000 SQ. FT. TO 1500 SQ. FT.  
2 BHK TO 3 BHK  
A 100% RERA PROJECT



YIKAS  
LIFESTYLE  
COMMUNITY  
JYO  
BETTER SE  
BEHTAR  
AT THE RITZ



कितना होंगे  
एक ही दिन  
JOB BETTER  
NO BETTER  
IN EVERY WAY

LAUNCHING  
NEW TOWER  
1 & 2 BHK



More  
NEIGHBORLY  
BETTER  
CONNECTIVITY



BEHTAR HOGA  
EVERY DAY.  
JAB LIFESTYLE  
HO BETTER  
IN EVERY WAY.

LAUNCHING  
**NEW TOWER**  
1, 2 & 3 BHK HOMES

Welcome to the world of Ritz. A thoughtfully crafted lifestyle in the heart of Kalyan, New Khadakpada. It offers 20+ lifestyle amenities and stunning views for better experiences. And, the location provides accessibility for better convenience.

FUTURE DEVELOPMENT



Artist's Impression



Stock image

CREATING BETTER LIFESTYLES FOR  
**BEHTAR ZINDAGI**

**VIKAS**  
DEVELOPER  
PASSION. PERFECTION. PROGRESS.

For more information, Call Now: **022 4896 4490**

Site Address: Ritz, Building No. A/9 & A/10, Panhalgad Chs, Shree Complex, Phase Iii, Adharwadi Jail Road, Kalyan (W), 421301

The specifications and other details herein are only indicative and the Developer reserves the right to change any or all of these at its / their sole discretion subject to the approval of the authorities as required by the developer in the interest of continuing improvement without prior notice or obligation. This document does not constitute an offer and/or a contract of any type between the Developer & the recipients and acquisition in this project shall strictly be governed by the terms and conditions of the Agreement to be executed between the parties. \*Terms & Conditions Applicable. This project is registered under Maharashtra registration no. P51700047353 | P51700026485 | P51700029726 | P51700047423 and is available at maharera.mahonline.gov.in RERA Registration No.: ANAROCK Property Consultants Pvt. Ltd. Maharashtra registration no.: A51900000108 available at maharera.mahonline.gov.in RERA Registration No.: P51700026485 ANAROCK Property Consultants Pvt. Ltd. Maharashtra registration no.: A51900000108 available at maharera.mahonline.gov.in

**VIKAS**  
DEVELOPER  
PASSION. PERFECTION. PROGRESS.

ENJOY  
BEHTAR FAMILY TIME WITH  
**BETTER  
CONNECTIVITY.**

UPCOMING | Kalyan Metro line | 6-Lane bridge on Ulhas River | 31 km long ring-road from Dombivli to Titwala through Kalyan | Airoli - Kalyan freeway | Navi Mumbai International Airport

**CONNECTIVITY**

- Kalyan Railway Station (3.7 km)
- Kalyan Shilphata Road (4.0 km)
- Titwala - Kalyan Via Thane 26 km Ring Rd (600 m)
- Thane - Nashik Highway (7.5 km)

**SCHOOLS**

- St. Lawrence International School (550 m)
- Billabong PreSchool (700 m)
- Don Bosco High School (280 m)
- St. Xavier's International School (500 m)

**LIFESTYLE**

- Dmart (2.7 km)
- Metro Junction Mall (4.6 km)
- Café Coffee Day (2.8 km)
- Reliance Smart Point (1.7 km)

**HOSPITALS**

- Pari Multi-specialty Hospital and Diagnostic Centre (230 m)
- Remedy Multi-specialty Hospital (170 m)
- Lifecare NX Hospital (1.9 km)

KALYAN LOCATION  
AT NEW KHADAKPADA



JIYO  
BETTER SE  
BEHTAR  
AT NEW KHADAKPADA

**RITZ**  
SUCCESS KI NAYI DESTINATION

**BANAO HAR PAL  
BEHTAR WITH  
20+ LIFESTYLE  
AMENITIES.**



## Why Kalyan?



**SEAMLESS  
CONNECTIVITY**



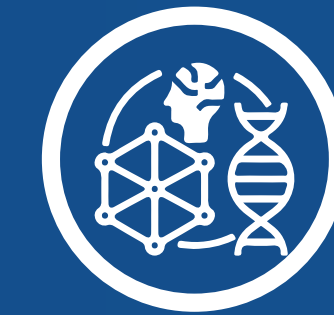
**ROBUST SOCIAL  
INFRASTRUCTURE**



**EXPONENTIAL  
EMPLOYMENT GROWTH**



**REVOLUTIONARY  
FUTURE DEVELOPMENTS**



**EMERGING  
PROMISING LOCALITIES**



**STRATEGICALLY  
LOCATED**



**PROXIMITY TO  
NATIONAL HIGHWAYS**



**BLEND OF  
SERENITY & MODERNITY**