



☎ 033 40586242

Site Address: Hogolkuria (Nepalgunj - Jayanpur Connecting Road),
Sonarpur, Kolkata - 700103

RERA No.: WBRERA/P/SOU/2023/000413

Project By

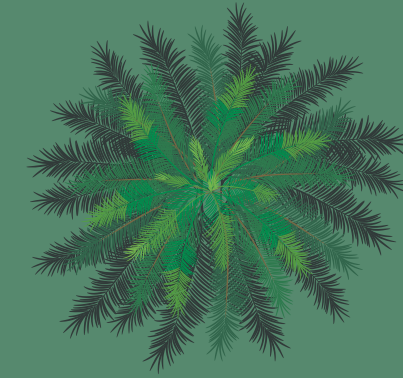


Strategic Partner



www.theearthmm.in

Palm VILLA



With Love, From Nature.

Disclaimer: This brochure is purely conceptual and not a legal offering/ legal document/ offer or invitation to offer. The information contained in this brochure, including elevations, photographs, renders, images, details, specifications, perspectives, finishes, amenities, facilities, etc. are only indicative and have been provided strictly for representative and illustrative purposes. Deeshari Group. reserves the right to amend/ modify/ alter/ vary any of the above at its discretion and without notice or any obligation. All fittings, accessories, equipments, furniture etc. shown are only by way of suggestions as to the manner in which the subject areas may be used, and the same do not form a part of the specifications and/or the deliverables. Tiles, marble and granite have inherent characteristics of colour and grain variation. All images are an artist's impression, and are not fully representative. Architectural features may differ in different apartments.



Majestic green palms
Swaying in the breeze
Cool and serene green
As far as the eye can see

Raindrops on thatched roof
Veja Matir Gondho
Wafting in through windows
Cool breeze enveloping you in bliss.





A home of your dreams
Amidst the palms
Blessed with all nature can offer
Yours forever to cherish.



Your own haven

— Blissful, Peaceful, Soulful.



Amidst lush greenery, pristine environs and a serene, pure landscape, Palm Villa embodies a distinctive, unparalleled bungalow lifestyle, reminiscent of erstwhile luxury living.



Large panoramic windows that bring the outdoors-indoor.

green the way — you live.

The calm, nature gives you when you get close

And sheer surprise when you know that city is even closer.



Deeshari Palm Villa is extremely well connected to Kolkata city. Be it by Road, Metro Rail and Buses, Palm Villa will be close to your needs and closer to your heart.

city centric — amidst nature.

Located in South Kolkata (Nepalgunj - Jayanpur Connecting Road), Deeshari Palm Villa is in a serene space, close to city, yet far from noise. The only sounds you will hear will be birdsong and the lullaby of nature.

Key distance

Kavi Nazrul Metro -	7.3 km
Southern Bypass -	5.0 km
De Paul School -	2.0 km
Hindustan Health Point -	7.0 km
B.D Memorial School -	7.2 km





live green

It's a blessing from nature
And we just did our little bit
To make your life so comfortable and all your needs fulfilled.

live natural.



Be blessed with the gifts of Nature. Breathe in fresh natural air
with ample cross ventilation and airy verandahs. Or bloom in the
sunlight streaming through large windows.



the
gateway to —
your oasis.

Step into a world of elegance as you pass through our grand entrance. Experience the essence of luxurious living from the moment you arrive.





Veja Matir Gondho

the bungalow — living.

A vibrant community of like- minded families, a sprawling clubhouse and community centre for celebrating life, Deeshari Palm Villa offers you a lifestyle you richly deserve.

the sustainable — living.

A lifestyle that is close to nature. Bungalows inspired by the architectural traditions of an era goneby, recreated to offer you the space, the comfort and class that will remain forever.





The
Kentia
bungalow

With traditional tropical architecture, sloping thatched roofs, polished wooden beams and intricately carved facades, Palm Villa Bungalows exude a sophistry and elegance of a regal lifestyle.



luxury meets — affordability.



Open verandah, wide open spaces, large windows,
exclusive car park, a lifestyle that spells class.



The
Sentry
bungalow

upgrade to level — next.



02

welcome to the —
upper echelons.



03



The
Ereca
bungalow

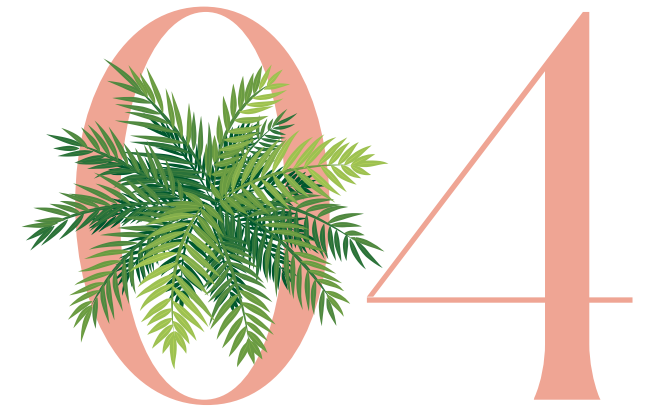
When your dreams get bigger, you need the space to accommodate.
And what better than a duplex bungalow, with all the amenities you desire.

A private swimming pool with an adjoining deck, three floors of expansive luxury, the essence of uber cool living. A vertical garden overlooking green vistas. This is the epitome of your aspirations.



The
Majesty
bungalow

luxe — unparalleled.





The
club class life

exclusively
— your own.

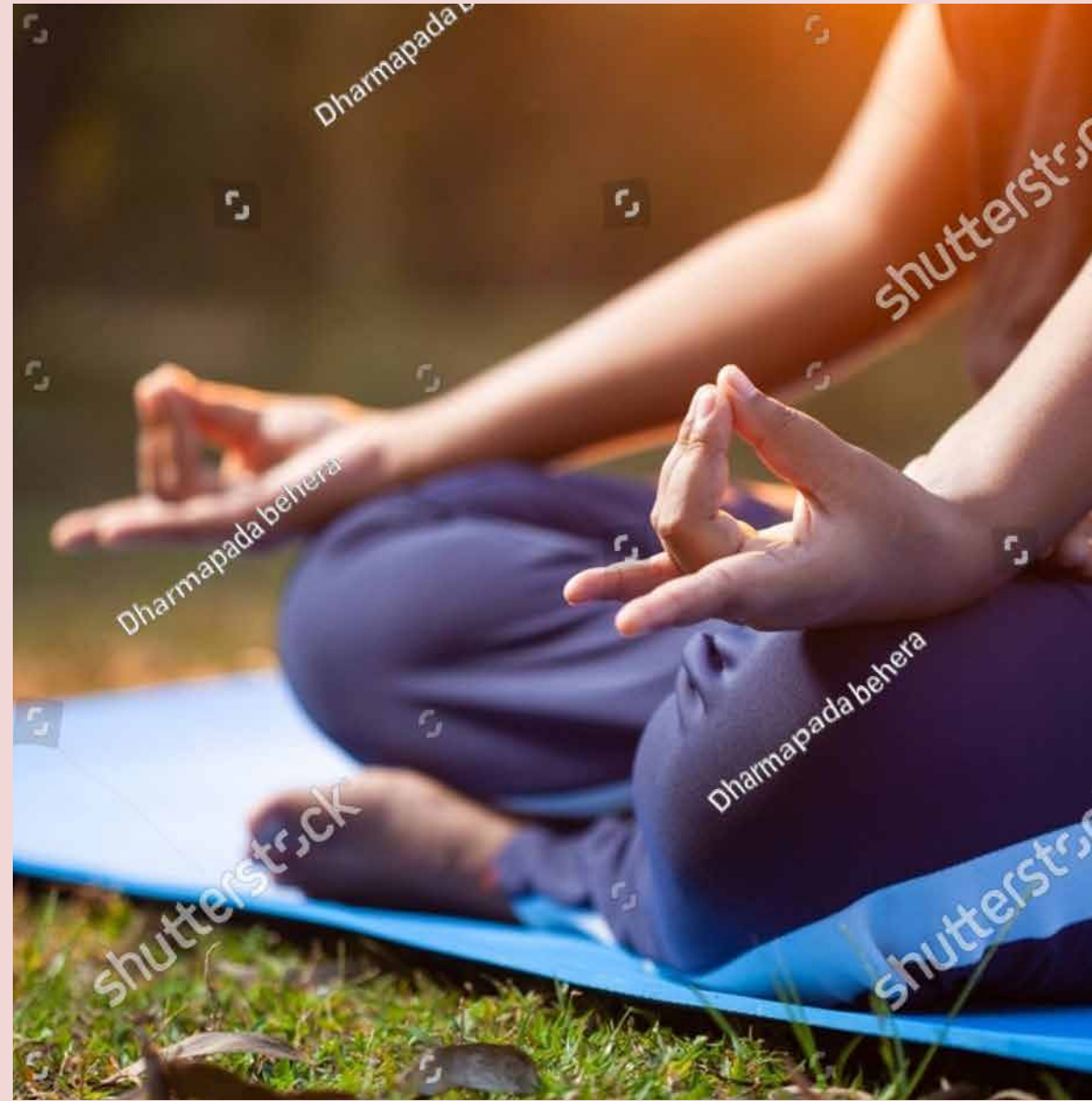
A vibrant community of like- minded families, a sprawling clubhouse and community centre for celebrating life, Deeshari Palm Villa offers you a lifestyle you richly deserve.

live the — bungalow lifestyle.

A lifestyle you will be proud of.

An investment for your future.





Be it the vast expanse of lawns for yoga and meditation, or workspace if you have a meeting, or look up something in the library, your work-life balance is integral to living, at Deeshari Palm Villa.



the
holistic living,
nature's blessing.



iron is in the — will.



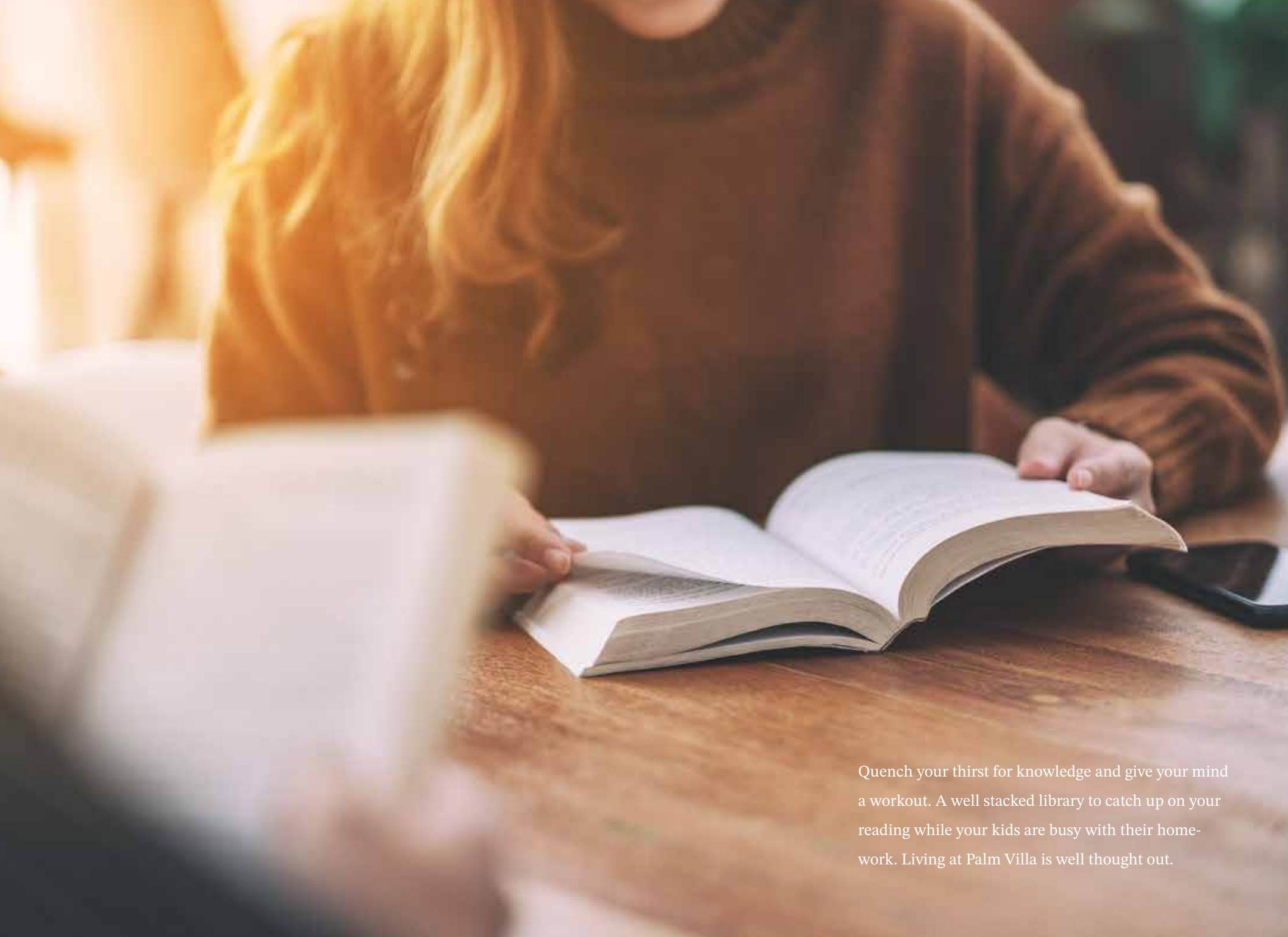
Some of you would require a heavier workout than a stroll. Sweat it out at your own gym at your pace and at your own time. The machines await. Tame them.

the
club class
— living.



A game of billiards, a cocktail party with your friends, a meeting with your business associates, there is the right ambience. The ideal space for mixing business with pleasure.





Quench your thirst for knowledge and give your mind a workout. A well stacked library to catch up on your reading while your kids are busy with their homework. Living at Palm Villa is well thought out.

the intelligent — living.



the
summer of
chill.



Hot sweltering summers or the humidity
of the tropics will not faze you. Jump in.
Or deep dive into the refreshing cool. And
the icing is that it's your own pool.

baro mashe — tero parbon.



Where celebrations are a way of life and sweet are its moments, you have just the right ambience, the space and the place. So that each festivity and every gathering will be memories for a lifetime.

the
sensible
— living.







Never go far for all your daily needs. Convenient amenities and services are easily accessible, making daily chores a real breeze.



Master Plan

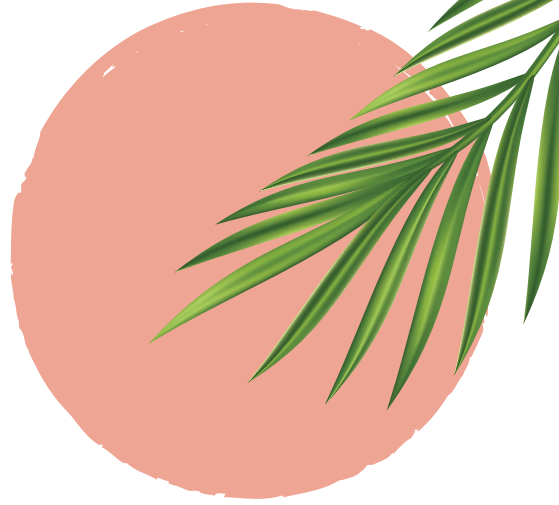
*Proposed Expansion



SYMBOL	DESCRIPTION
	1.34K - TYPE - 1
	1.34K - TYPE - 2
	1.29K - TYPE - 3
	1.38K - TYPE - 4

LEGEND

1. ENTRY / EXIT
2. COMMERCIAL BLOCK
3. INTERNAL DRIVEWAY
4. THE CLUB RETREAT
5. CLUB PARKING
6. SWIMMING POOL
7. POOL DECK
8. GREEN LAWN
9. KID'S PLAY AREA
10. OPEN GYMNASIUM
11. REFLOXOLOGY PATH
12. GREEN ISLAND
13. SERVICES
14. PERIPHERAL GREEN





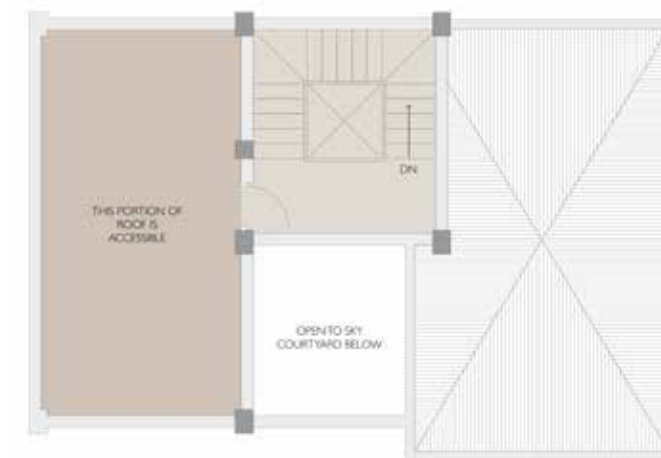
Type 01 / KENTIA



Ground Floor



First Floor



Roof

Unit type/name	Plot area	Configuration	Carpet area as per RERA (sq.ft.)	Balcony/open terrace (sq.ft.)	Built up area of the unit (sq.ft.)
01. KENTIA	1.34KH (964 sq.ft.)	3.5B- 3T	1066	56	1360

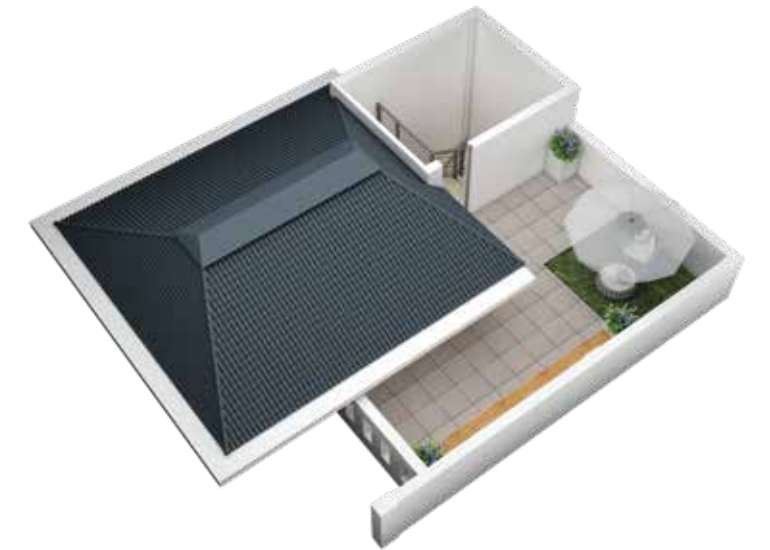
Type 02 / SENTRY



Ground Floor



First Floor



Roof

Unit type/name	Plot area	Configuration	Carpet area as per RERA (sq.ft.)	Balcony/open terrace (sq.ft.)	Built up area of the unit (sq.ft.)
02. SENTRY	1.34KH (964 sq.ft.)	3.5B- 3T	1175	101	1380



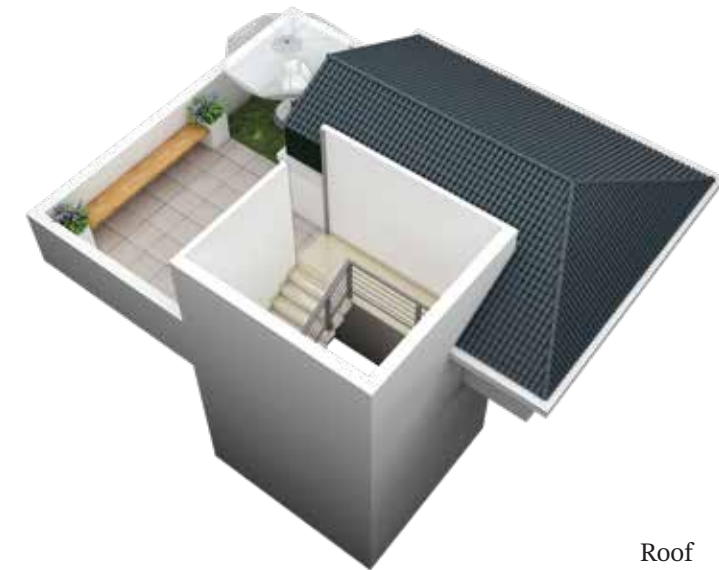
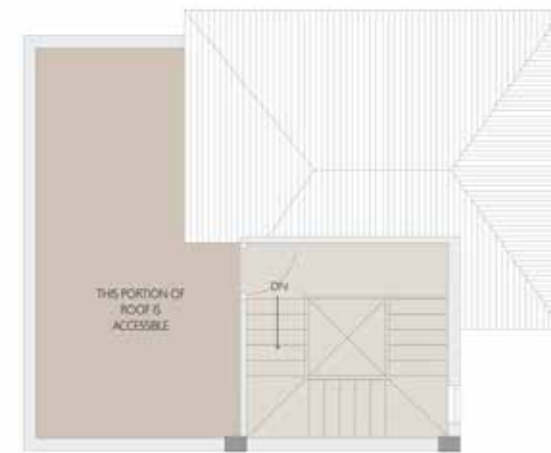
Type 03 ARECA



Ground Floor



First Floor



Roof

Unit type/name	Plot area	Configuration	Carpet area as per RERA (sq.ft.)	Balcony/open terrace (sq.ft.)	Built up area of the unit (sq.ft.)
03. ARECA	1.29KH (928 sq.ft.)	3B- 3T	1014	70	1175

Type 04 MAJESTY



Ground Floor



Second Floor



First Floor



Roof



Unit type/name	Plot area	Configuration	Carpet area as per RERA (sq.ft.)	Balcony/open terrace (sq.ft.)	Built up area of the unit (sq.ft.)
04. MAJESTY	1.38KH (993 sq.ft.)	4B- 4T with PLUNG POOL	1656	51	1875

Standing the test of time, Proudly bearing our name.

Since 2001, the Deeshari Group, helmed by Mr. Jay Ram Naskar has been making a mark in the real estate landscape of Kolkata. The Deeshari name is proudly emblazoned on landmark projects like Deeshari I to VII, Deeshari Estate, Deeshari Enclave, Deeshari Exclusive, Deeshari Roma and Megacity.

Apart from residential projects, the Group has ventures in the hospitality industry, “Moments” on EM Bypass, Tilottama, a Bengali restaurant, Bari Bazar, property marketing services and Dzine, an interior design service company.

With our focus on Quality, commitment to customers, and service with sincerity and integrity, we aim to ensure that our reputation grows with time. And our creations stand tall bearing the Deeshari name.

FEW PAST PROJECTS



Deeshari Abokash, Bolpur Shantiniketan



Deeshari Abosar Bolpur, Shantiniketan



Deeshari Aronnyak, Dooars Jalpaiguri



Deeshari Comfort New-Garia, Kolkata



Deeshari Estate, Madurdaha Kolkata



Deeshari Megacity, Sonarpur, Kolkata