

PROJECT BY



ARCHITECT



LANDSCAPE ARCHITECT



MEP CONSULTANT



STRUCTURAL ENGINEER



PMC



Site Address: Beside Ganesh Pride, Umiya Dham Road,
Nr. Vaishnodevi Circle, Khodiyar, Gujarat.

Contact No.: +91 99099 06356

Disclaimer: The plans, specifications, images & other details herein are only indicative & the Developer reserves the right to change any or all of these in the interest of the development. The brochure is conceptual and is not a legal offering for Sale/Agreement. The images and renders are for reference purposes only.



RERA REG NO:
PR/GJ/GANDHINAGAR/GANDHINAGAR/Gandhinagar
Municipal Corporation/RAA16085/11125/311230



3BHK SIGNATURE APARTMENTS

What began as a mystery now stands revealed a name whispered between design boards and city lights.

 **PAGE 22**

ISN'T BUILT TO IMPRESS.
IT'S BUILT TO BELONG.





A tower that doesn't rise it evolves.
Quietly, confidently, precisely.

Every line has purpose, every edge softens into calm.
It's where architecture becomes atmosphere crafted
for those who live between ambition and ease.

 PAGE 22

THIS IS NOT A RESIDENCE. IT'S RHYTHM,
TRANSLATED INTO STRUCTURE.



WHY VAISHNODEVI

Some places hum with energy.
Others hold stillness.
Vaishnodevi manages both.

The temple bells still echo here,
but now they mingle with the
pulse of progress.



Some places hum with energy.
Others hold stillness. From SG
Highway to SP Ring Road, the
city flows effortlessly around it
connected, composed.

By dusk, as lights flicker on
across the horizon, you see
the temple glow on one side
and the skyline shimmer on
the other.



PROJECT OVERVIEW

22 Floors

Single tower

80 Residences

68 Spacious 3BHK Apartments

❖ 5 Lifts
(4 Private + 1 Service)

❖ 3 Levels
Of Basement Parking

❖ 4 Residences
Per Floor With Private Lift Access

❖ 12 Exclusive
4BHK Duplex Penthouses
With Private Pool

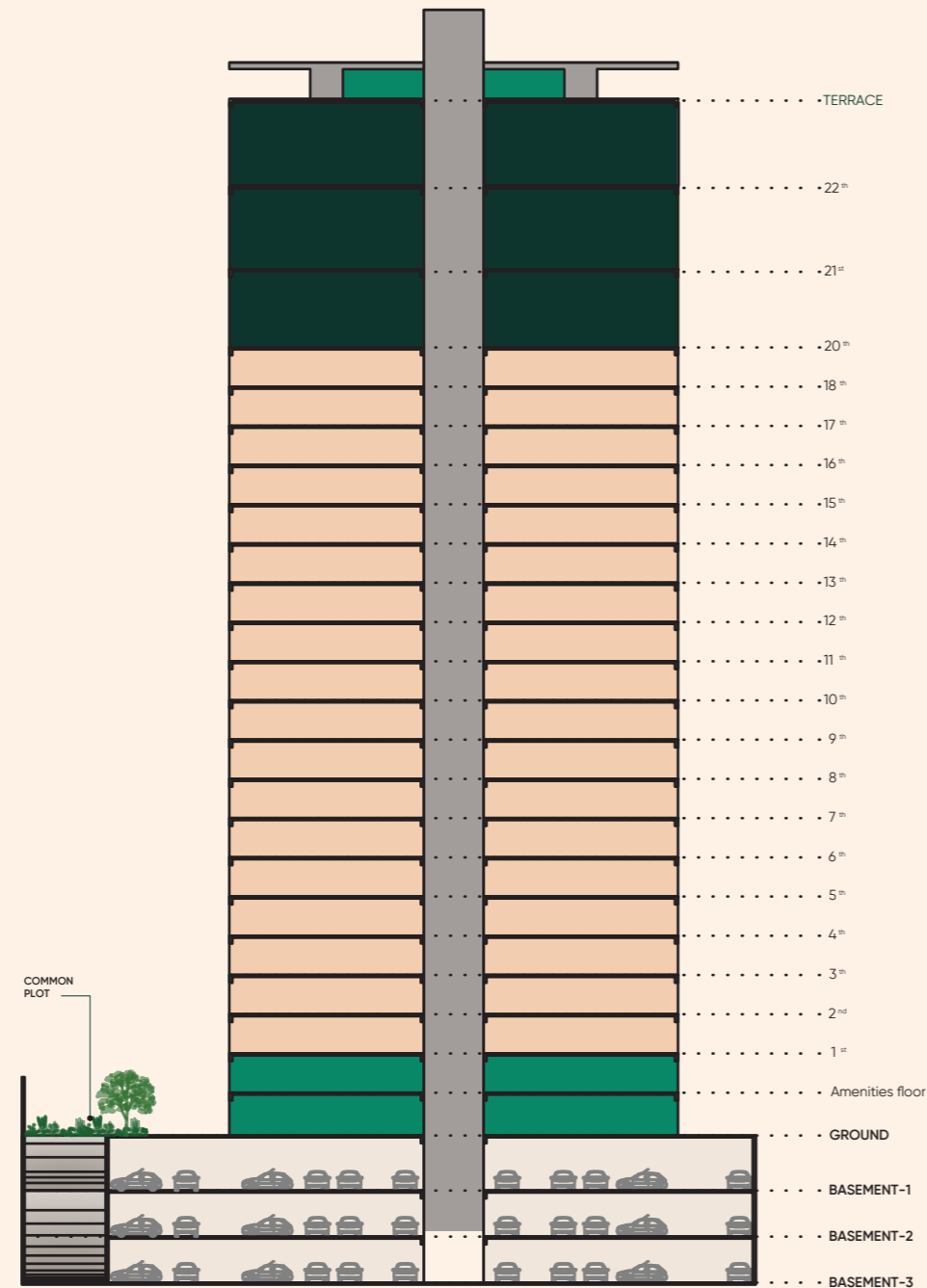
FLOOR PLAN

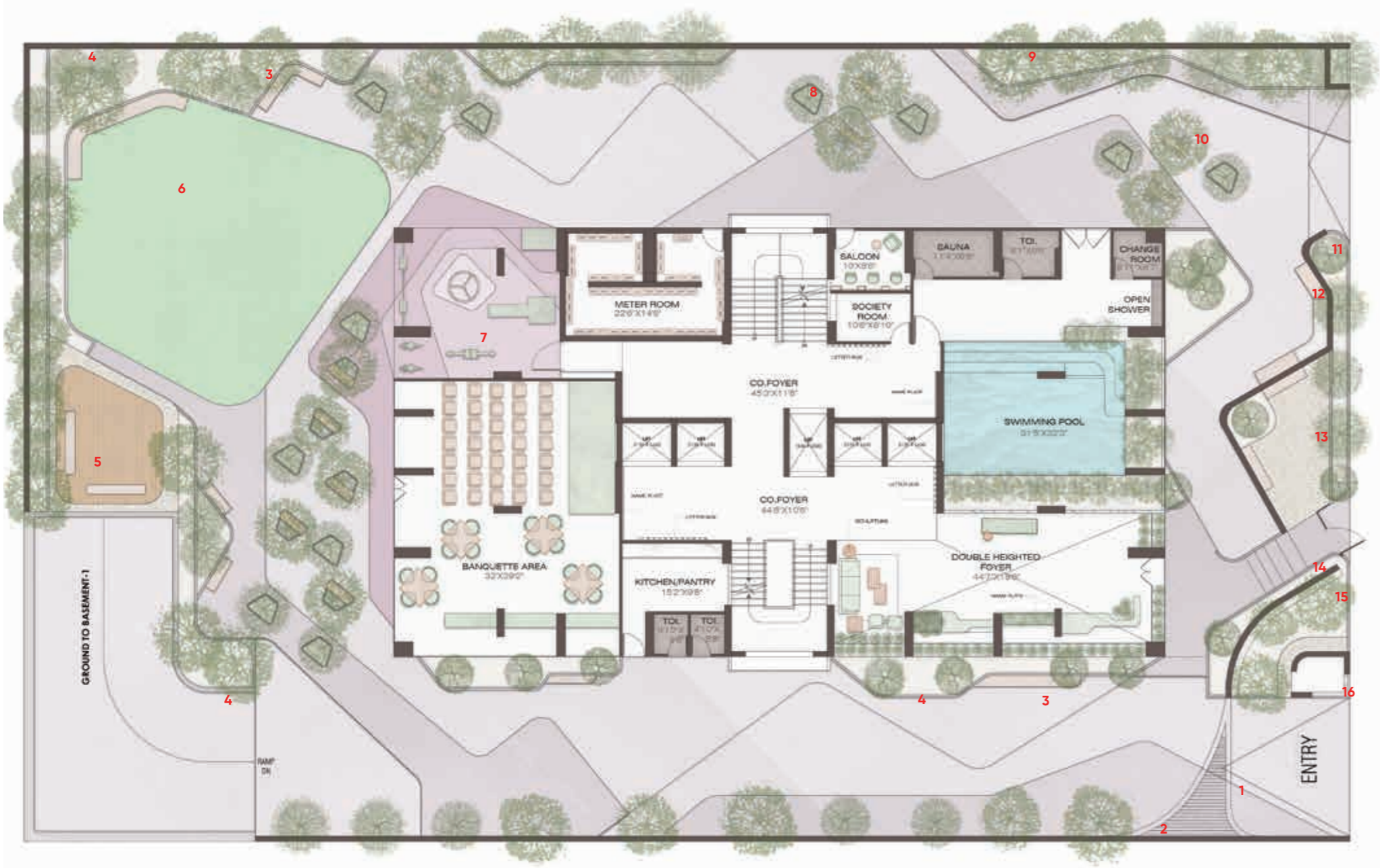
Inside Page 22, design turns daily life into design language.

Three balconies catch the light at different hours.

The island kitchen stands at the centre functional yet sculptural, alive with warmth.

- 20th, 21st & 22nd Floor
Duplex Penthouse
- 3BHK Homes from
1st to 18th Floor
- Amenities floor





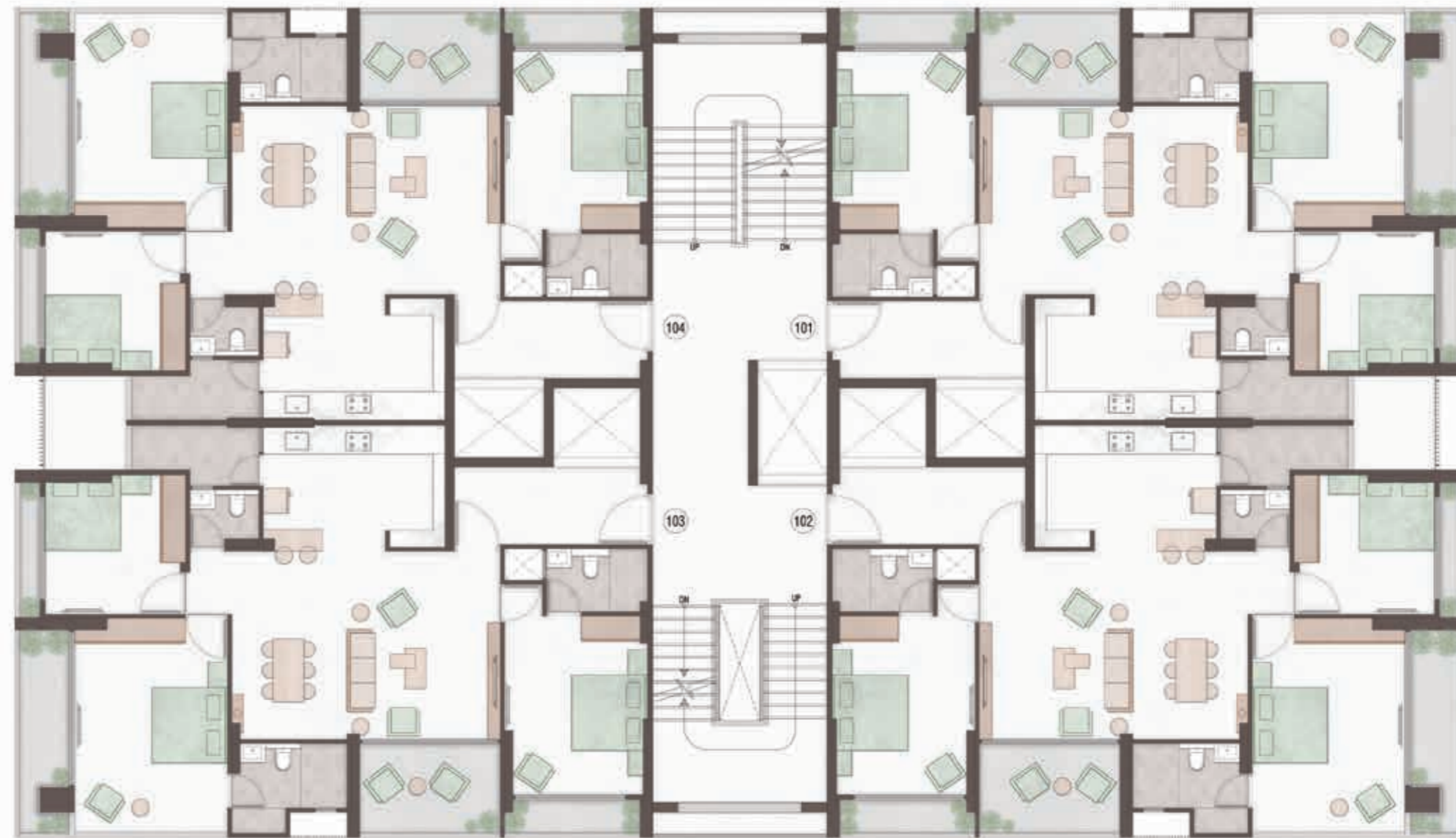
GROUND FLOOR PLAN

LEGEND

- 1. Entrance portal
- 2. Treepit
- 3. Seating space
- 4. Planter
- 5. Gazebo space
- 6. Lawn area
- 7. Kids play area
- 8. Movable tree planter
- 9. Boundary plantation
- 10. Movable seating and planter
- 11. Feature compound wall
- 12. Front area garden
- 13. Drop off zone and entrance seating area
- 14. Entrance steps
- 15. Feature wall and name plate wall
- 16. Security cabin



FIRST FLOOR AMENITIES



TYPICAL FLOOR PLAN



TERRACE LAYOUT

LEGEND

- | | | | |
|----------------------------------|------------------------------------|---------------------|--------------------------|
| 1) Dense Plantation | 5) Flooring Pattern | 9) Movable planter | 13) Yoga and Event Deck |
| 2) Swing deck | 6) Amphitheatre | 10) Outdoor kitchen | 14) Portel For Projector |
| 3) Moveable Planters and Seating | 7) Grit Bed | 11) Handwash Space | 15) Elemertal Tree |
| 4) Niche Seating | 8) Gazebo And Senior Citizen space | 12) Lawn Area | |



3BHK APARTMENTS



4BHK PENTHOUSE LOWER LEVEL



4BHK PENTHOUSE UPPER LEVEL



UNIT LEVEL OFFERING

🏡 3BHK with
3 Balconies

🏡 Private lift with
card access

🏡 Dedicated
Pooja Space

🏡 2 Side
Facing Units

🏡 135 Sq Ft
Island Kitchen

🏡 10 Ft Long
Washyard

🏡 17 Ft Long Master
Room Balcony



Indoor Gym



Children Play Area



Gazebo



Waiting Lounge
with Reception



Banquet Hall With
Kitchen



Indoor Games Zone



Guest Rooms



Double Heighted
Entrance Foyer



Co-Working Space
/Library



Landscape Garden



AMENITIES

THE EVERYDAY CALM



Swing Portal



Steam Room



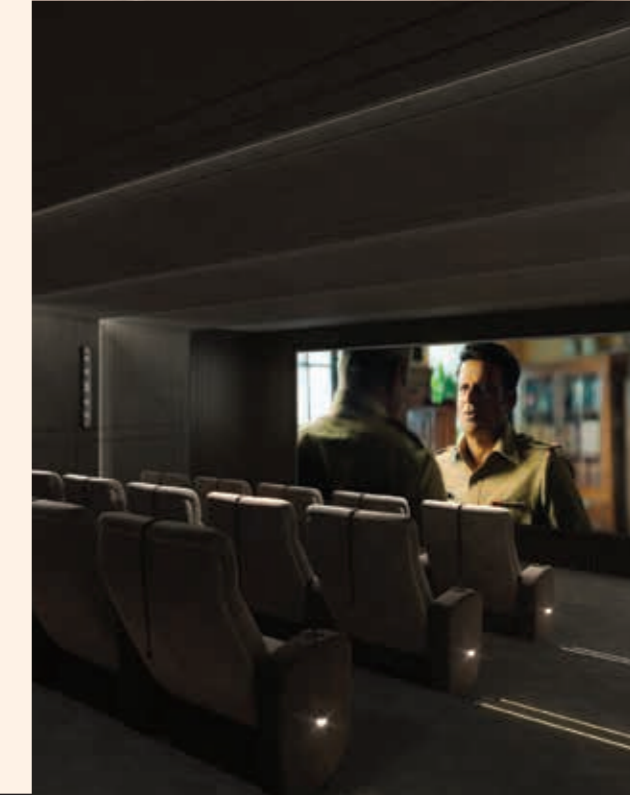
Salon



AV Room



Swimming Pool



Yoga Deck



Multipurpose Court



Senior Citizen Sitout



Mini Theatre



M/F Changing
Rooms



THE VISUAL LANGUAGE



Light, proportion, and stillness that's
the grammar of Page 22.

The façade flows in balance clean lines,
muted palettes, timeless geometry.

From the podium garden to the terrace edge,
the tower frames Ahmedabad like a piece of
art, changing tone with every hour of the day.

No drama. No noise. Only design that feels
inevitable.



FACILITIES | THE UNSEEN LUXURY



24x7 CCTV surveillance
and security cabin



Boom barriers with
controlled entry



2 allotted car parks per
home + visitor parking



Drop-off zone and
vehicle-free internal areas



Power backup for common areas
and 24x7 water supply



Handicap-friendly infrastructure,
society office & store



GREEN BUILDING FEATURES

IGBC-certified
design principles

Solar Panel Backup
for common use

Rainwater harvesting
and separate drainage
system



Use of low VOC materials
for healthier living

Energy-efficient lighting
fixtures and water-efficient
plumbing

EV charging points and
universal design for
differently abled

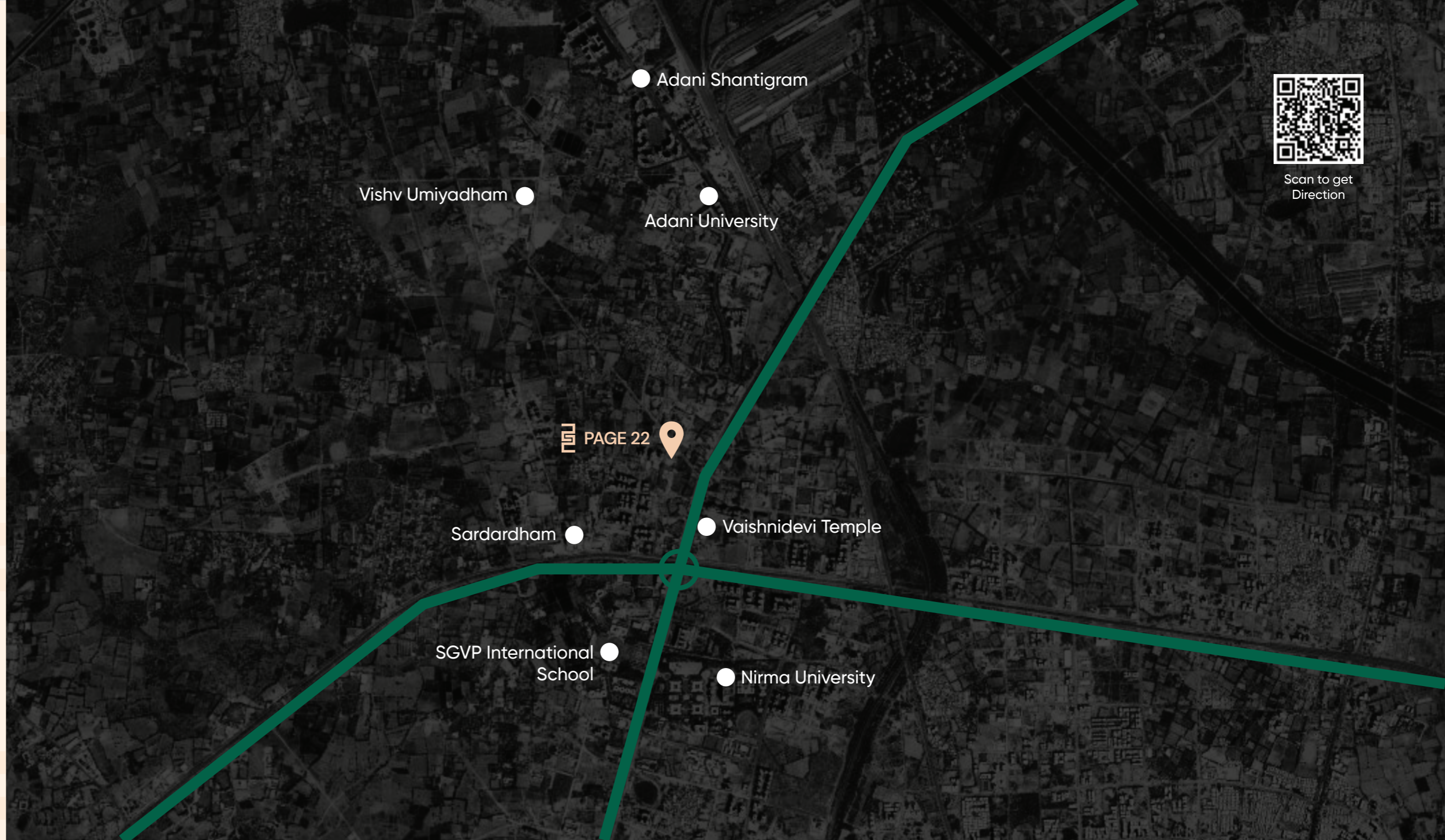


MAP

THE PERSPECTIVE

Draw a line across Ahmedabad's northern sky and Page 22 stands at its balance point. A landmark between temple and transit close enough to connect, calm enough to belong.

Not just coordinates on a map, but an address that orientates how the city now grows.



SOCIAL INFRA & CONNECTIVITY

Everyday life here flows with ease. The city's best schools, hospitals, and stores orbit this address. Commutes shorten, evenings lengthen.

From work to worship from wellness to weekend everything fits within minutes. It's an ecosystem built for the people who move fast but choose to live slow.

Recreation	Distance	Time
Connplex Luxuriance	750m	3mins
7 King cricket box arena	700m	3mins
Chharodi Lake	2.2 Kms	6 mins
The Belvedere Golf and Country Club	3.9 Kms	10 mins
The CBD Shopping Centre	4.5 Kms	15 mins

Educational Institutes	Distance	Time
Gems Genesis International School	1.3 Kms	4 mins
Nirma University	1.6 Kms	5 mins
SGVP International School	2.2 Kms	7 mins
Indira Gandhi National Open University	3 Kms	10 mins
Lakulish Yoga University	3.3 Kms	11 mins

Hospitals	Distance	Time
KD Hospital	1Kms	5 mins
Family Care Hospital	600m	2 mins
Estella IVF & Women's Hospital	1Kms	5 mins
Ashirvad Hospital	1.5 Kms	7 mins
SGVP Holistic Hospital	2 Kms	8 mins

Temples	Distance	Time
Khodiyar Mataji Mandir	500m	2 mins
Shri Maa Vaishnodevi Temple	1.5 Kms	5 mins
Maruti Dham - Hanuman Temple	900m	3mins
Aadiratnakar Jain Derasar	2 Kms	7 mins
Shree Balaji Temple	3 Kms	10 mins





SPECIFICATION

STRUCTURE

Earthquake resistance R.C.C. Frame
Structure with Block Masonry Wall

WALL FINISH

Internal Single Coat Plaster With White Putty &
External Textured Plaster With Acrylic Paint

KITCHEN

Granite Top Platform with Multi Function Sink &
Designer tiles dado upto beam bottom.

ELECTRIFICATION

Three Phase ISI Concealed copper wiring with latest
electrical safety features, modular switches & MCB
with sufficient electric points.

DOORS

Decorative main door with wooden frame, all internal
doors are flush doors with accessories

WINDOWS

Aluminium section sliding windows with
plain glass & all 4 sides stone revile

FLOORING

Good Quality Vitrified tiles in entire apartment.
China Mosaic in terrace for heat reflection.

TOILET & PLUMBING

Glazed tiles on flooring & Dado upto beam bottom.
Concealed plumbing with branded range of sanitary
ware & C. P. fittings.