



# TRIVENI HOMZ

**SECTOR-110 NOIDA.**

Luxury 3 & 4 BHK

---

"A PROJECT BY EXPLORE YOUR PROPERTY"

---

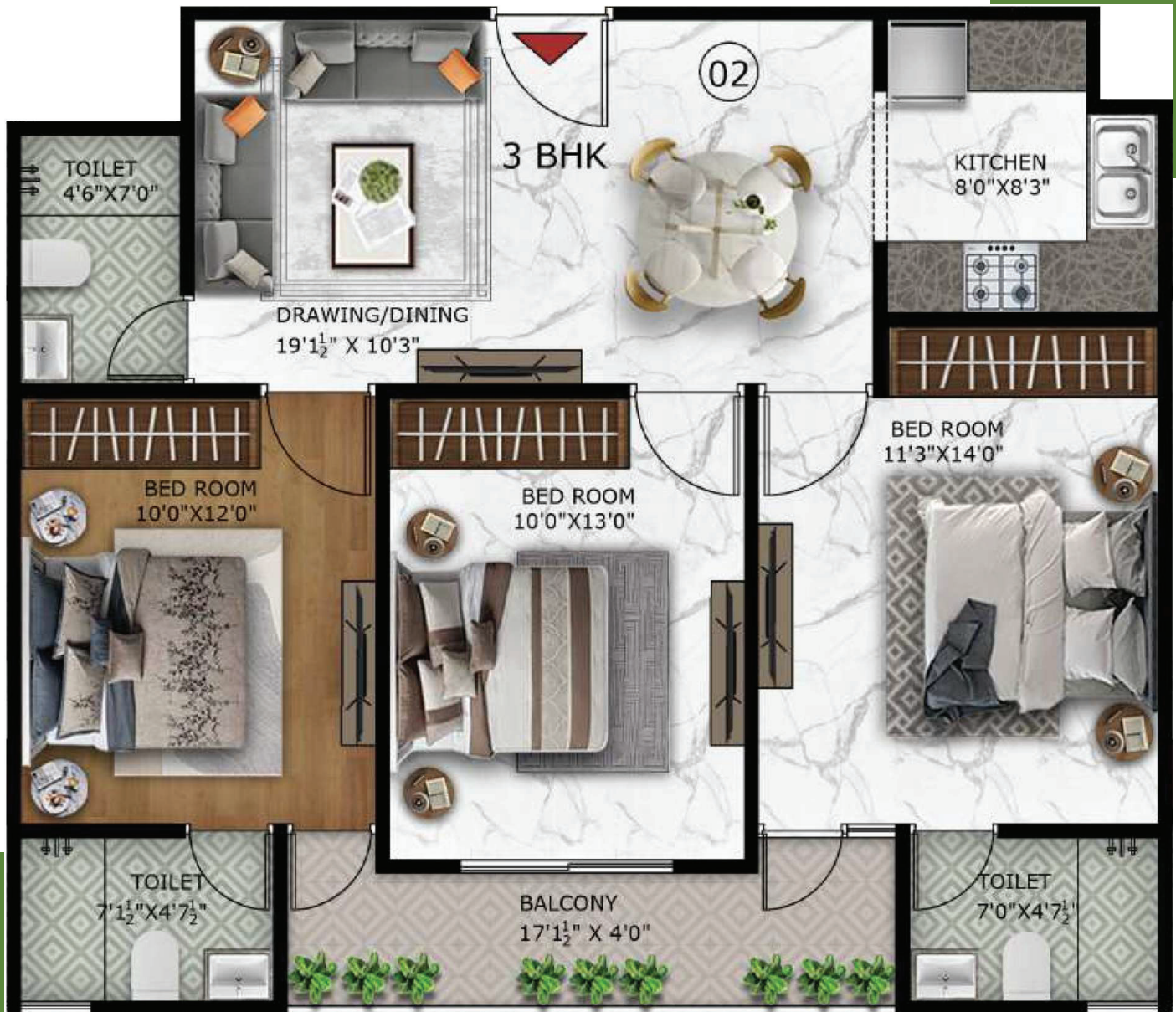
# TRIVENI HOMZ PROJECT



## Specification

1. Huge Balcony Space
2. Gated flats with ample Parking Space
3. Complete False Ceiling with profile LED lights inside the flat.
4. Complete Lights & Fans with paint work
5. Modular kitchen with Chimney
6. LED PANELS
7. All Sanitary fittings
8. 3 Wooden wardrobe in 4 bhk & 2 wooden wardrobes in 3 BHK

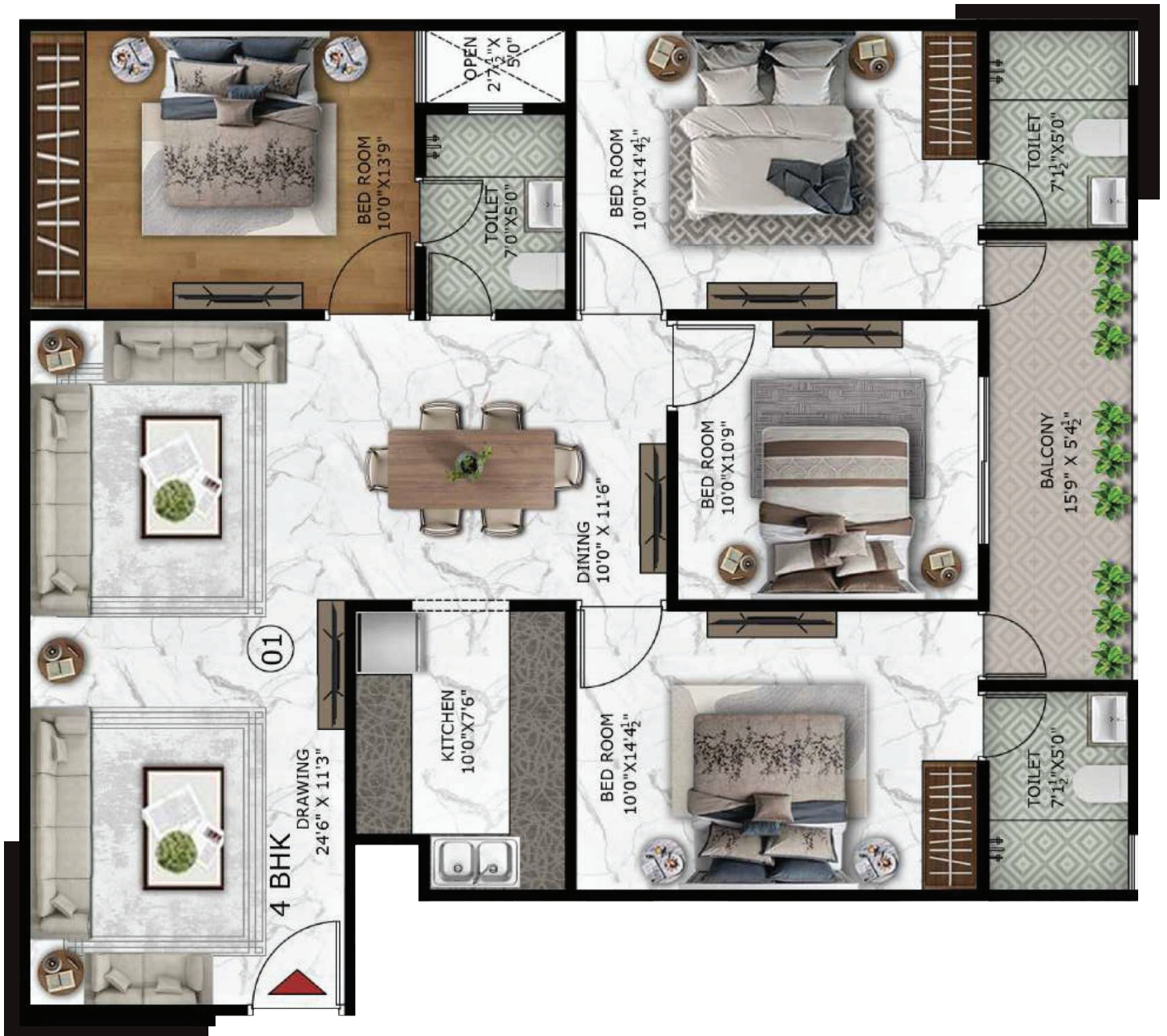
# 3 BHK AREA



**BEDROOM 12 x 10 FT. BEDROOM 13 x 10 FT  
MASTER BEDROOM 11.5 x 14 FT LIVING/  
DINNING 19.5 x 10.5 FT, KITCHEN 8.5 x 8 FT.  
BALCONY 17.2 x 4 FT. TOILET 17.2 x 5 FT.  
TOILET 27 x 5 FT TOILET 37 x 4.5 FT**



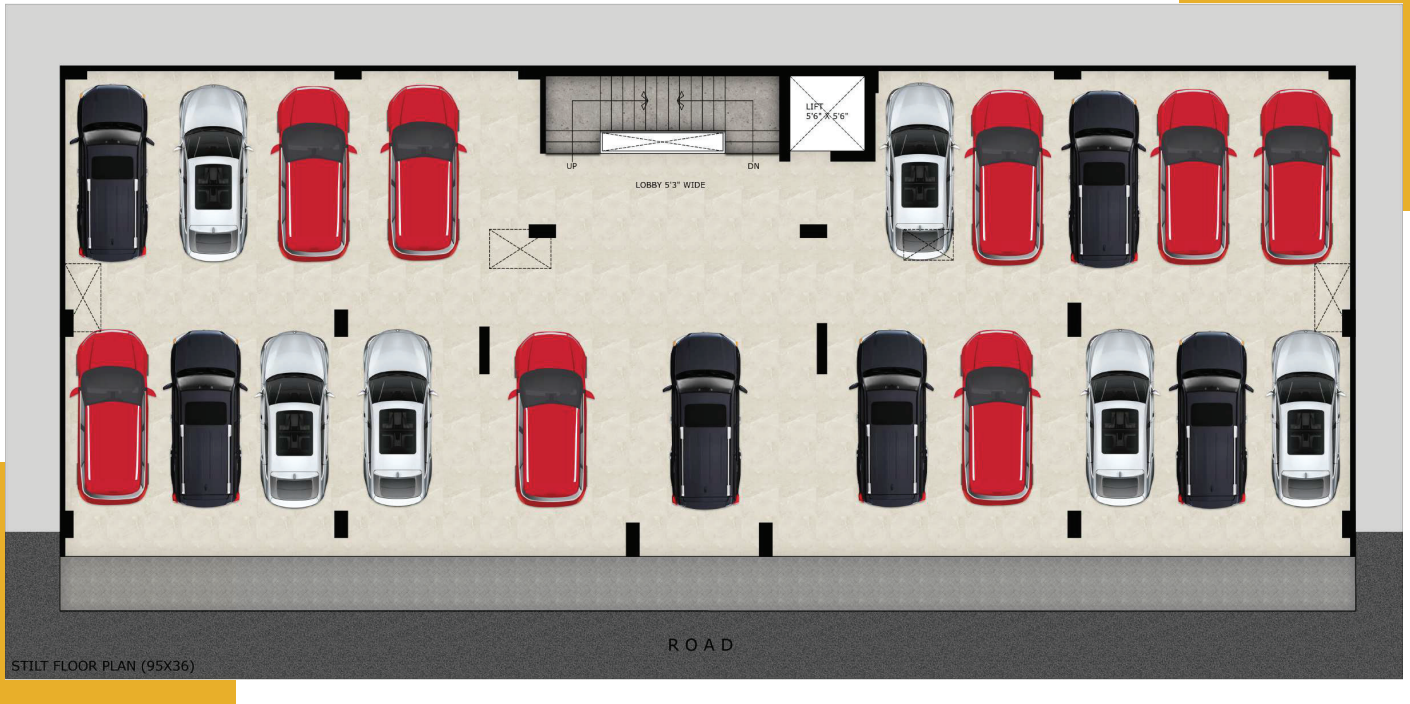
# 4 BHK AREA



BEDROOM 1 14 x 10 FT. BEDROOM 2 14.5 x 10 FT.  
 BEDROOM 3 11 x 10 FT, MASTER BEDROOM  
 14.5 x 10 FT. LIVING 26 x 11.5 FT. DINNING 11.6 x 10 FT.  
 KITCHEN 10 x 7.6 FT. BALCONY 16 x 5.5 FT.  
 TOILET 1 7.2 x 5 FT. TOILET 2 7.2 x 5 FT. TOILET 3x 7 \* 5



# AMPLE PARKING SPACE



TOTAL 20 CAR PARKING SPACE FOR 18 UNITS



# TRIVENI HOMZ

Luxury 3 & 4 BHK

**SECTOR-110 NOIDA.**

**"A PROJECT BY EXPLORE YOUR PROPERTY"**