



# KRISHNA RESIDENCY

*Your timeless pride..*





DK PROJECTS



welcome to  
**KRISHNA  
RESIDENCY**

Krishna Residency, a premier development by DK Projects™, represents the pinnacle of luxurious living. Backed by DK Projects' impeccable reputation for quality, integrity, and on-time delivery, this project is designed to offer residents an unparalleled experience of elegance and comfort.

We understand that for most people, a home is the most significant investment they will ever make. That's why, at Krishna Residency, every detail has been thoughtfully crafted with the care and precision as if it were our own, delivering a dream home that exceeds expectations.

Nestled in a serene, silent zone, Krishna Residency offers the perfect balance of tranquility and connectivity. While residents can enjoy peaceful living away from the noise, the property is strategically located to provide easy access to the city's major hubs, offering the best of both worlds.

To enhance your living experience, Krishna Residency is equipped with world-class amenities, including a swimming pool, basketball court, badminton court, cricket net, kids' play area, and a banquet hall. Every aspect of the property has been designed to provide a luxurious, comfortable, and vibrant lifestyle, making every day truly happening.

**KRISHNA RESIDENCY**

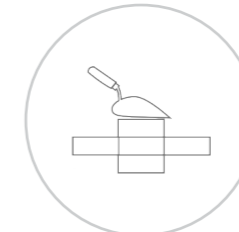
*"Your timeless pride, Your perfect home"*



**Specifications**



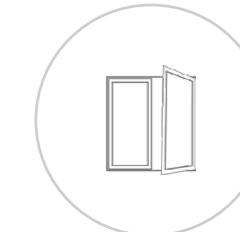
**R.C.C Framed Structure**  
According to  
Zone 11 regulations



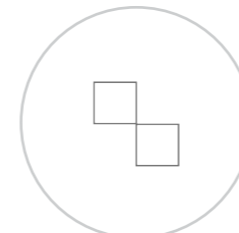
**4" and 6" Thick Wall of**  
Solid block masonry



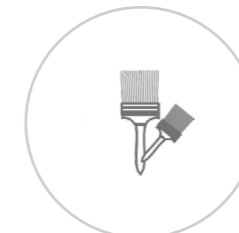
**Main Door and Frame Teak Wood,**  
**Other Door made of Sal wood frames**  
with painted flush shutters



**Window 3 Track Aluminium**  
frame  
MS frame



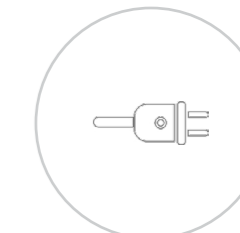
**Vitrified Flooring Tile Flooring**  
**Anti Skid/Mat Ceramic Flooring**  
in Toilet/Balconies/Utility



**Interiors Wall: Plastic Emulsion**  
**Exterior Walls: Cement Based Paint**  
**Doors & Grills: Enamel Paint**



**SS sink with Granite Platform.**  
Along with power points for all the  
appliances



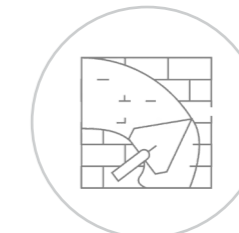
**ISI Make Concealed**  
Type in all the areas.



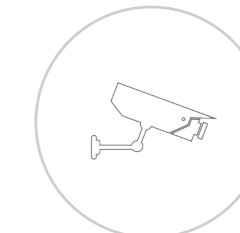
**Anti-skid tile for Flooring, Glazed Tile upto 7'**  
**height for the toilet.**  
Gyser and Exhaust points. Internal Bathroom  
fittings standard make.



**2nos. Six passenger**  
standard make lift.



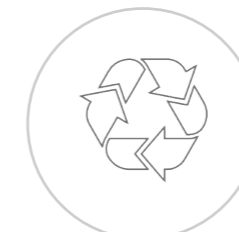
**Interior Walls- Smooth finish** with lime  
rendering  
**Exterior Walls- Sponge finish**



**CCTV Surveillance**



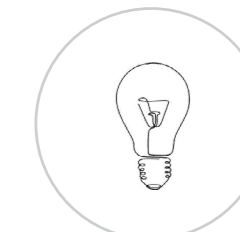
**Water Supply**



**Sewage Treatment**  
Plant (STP)



**500meters away from Metro**



**Lights in Common Areas**

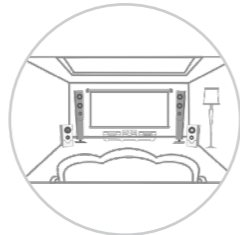
## Amenities & Recreation



Gym



Play Area



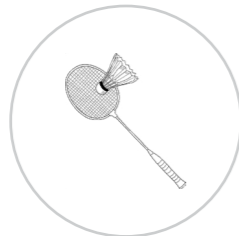
Banquet Hall



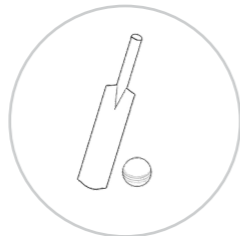
Swimming Pool



Power Backup



Badminton



Cricket Net



Car Parking



EV Charging Point



Visitors Parking



Basket Ball Court



Rainwater Harvesting



24/7 Security



Vastu Compliant



## FLOOR PLAN

Every layout is a work of art in progress, featuring east-facing designs that protect your privacy like a stealthy ninja!

The main entrances? They resemble hidden sanctuaries. Create culinary wonders in kitchens equipped with their own utility spaces, and bask in the sunlight on balconies that enhance both living rooms and bedrooms.

To crown it all, the bathrooms showcase exquisite Italian elegance, making these retreats truly captivating!





- LEGEND**
- 1) Entry
  - 2) Security
  - 3) Transformer Yard
  - 4) Banquet
  - 5) Gym
  - 6) Basketball Court
  - 7) Kids Play Area
  - 8) Swimming Pool
  - 9) Changing Room
  - 10) Badminton Court
  - 11) Cricket Net
  - 12) Parking
  - 13) Visitors Parking
  - 14) Exit

PARKING FLOOR PLAN



TYPICAL FLOOR PLAN





# FLOOR PLAN 3 BHK



- Furniture, fixtures or fittings shown in the floor plan are not standard and will not be provided in the apartment.

- Please refer to the allotment letter for exact unit sizes.

- Common areas/cablines and window placement may vary based on selected floor.

- Areas mentioned herein are approximate and shall vary based on selected apartment.

- All plans are in accordance with the latest approved sanctioned plan and are subject to changes mandated by government authorities and/or applicable laws from time to time.



Unit 1 | Block A | Block B

- Living Room 1
- Kitchen 1
- Bedrooms 3
- Toilet 3
- Balcony 2
- Utility 1

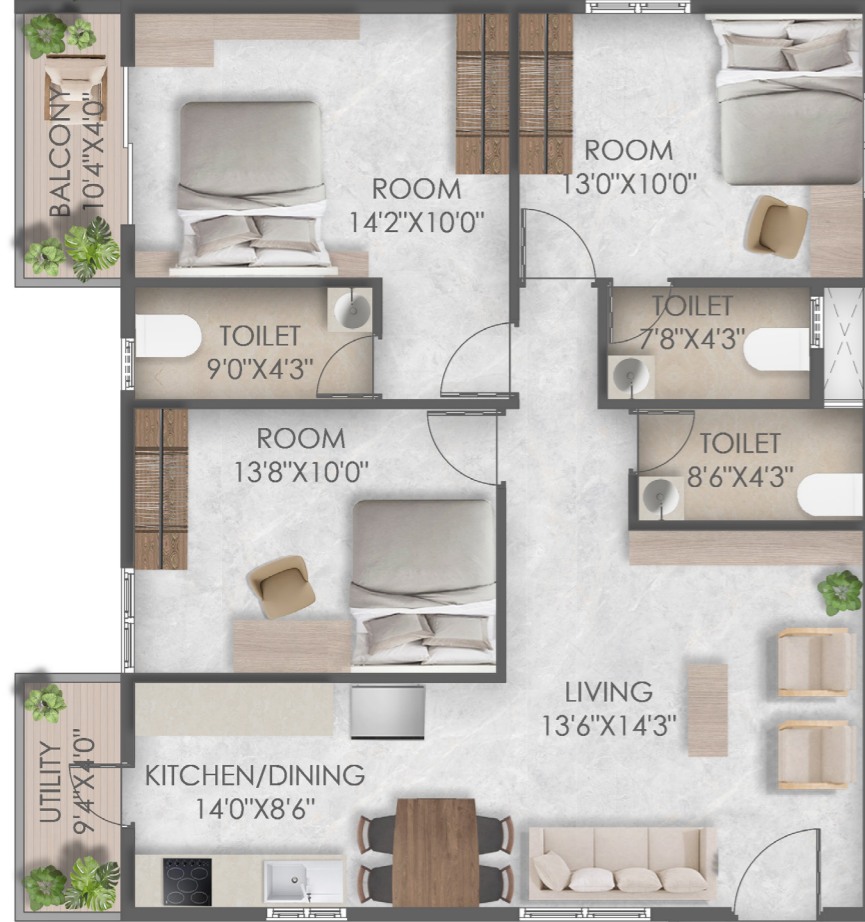
Total Area : 1,457sqft

Scan here for Walkthrough



Key Plan

### FLOOR PLAN 3 BHK



Unit 2 | Block A | Block B

- Living Room 1
- Kitchen 1
- Bedrooms 3
- Toilet 3
- Balcony 1
- Utility 1

Total Area : 1,395sqft



Scan here for Walkthrough



Key Plan

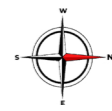
### FLOOR PLAN 2 BHK



Unit 3 | Block A | Block B

- Living Room 1
- Kitchen 1
- Bedrooms 2
- Toilet 2
- Balcony 2
- Utility 1

Total Area : 1,155sqft



Scan here for Walkthrough



Key Plan

- Furniture, fixtures or fittings shown in the floor plan are not standard and will not be provided in the apartment.  
 - Please refer to the allotment letter for exact unit sizes.  
 - Common areas/lobbies and window placement may vary based on selected floor.  
 - Areas mentioned herein are approximate and shall vary based on selected apartment.  
 - All plans are in accordance with the latest approved sanctioned plan and are subject to changes mandated by government authorities and/or applicable laws from time to time.

## FLOOR PLAN 2 BHK



### Unit 4 | Block A | Block B

Living Room	1
Kitchen	1
Bedrooms	2
Toilet	2
Balcony	2
Utility	1

Total Area : 1,260sqft

Scan here  
for Walkthrough



Key Plan

## FLOOR PLAN 3 BHK

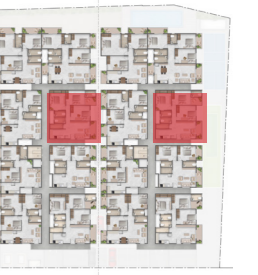


### Unit 5 | Block A | Block B

Living Room	1
Kitchen	1
Bedrooms	3
Toilet	3
Balcony	2
Utility	1

Total Area : 1,480sqft

Scan here  
for Walkthrough



Key Plan

- Furniture, fixtures or fittings shown in the floor plan are not standard and will not be provided in the apartment.  
 - Please refer to the allotment letter for exact unit sizes.  
 - Common areas/corridors and window placement may vary based on selected floor.  
 - Areas mentioned herein are approximate and shall vary based on selected apartment.  
 - All plans are in accordance with the latest approved sanctioned plan and are subject to changes mandated by government authorities and/or applicable laws from time to time.

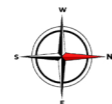
# FLOOR PLAN 3 BHK



Unit 6 | Block A | Block B

- Living Room 1
- Kitchen 1
- Bedrooms 3
- Toilet 3
- Balcony 1
- Utility 1

Total Area : 1,445sqft



Scan here for Walkthrough



Key Plan

# FLOOR PLAN 3 BHK



Unit 8 | Block A | Block B

- Living Room 1
- Kitchen 1
- Bedrooms 3
- Toilet 3
- Balcony 3
- Utility 1

Total Area : 1,756sqft



Scan here for Walkthrough



Key Plan

- All plans are in accordance with the latest approved sanctioned plan and are subject to changes mandated by government authorities and/or applicable laws from time to time.  
 - Areas mentioned herein are approximate and shall vary based on selected apartment.  
 - Common areas/corridors and window placement may vary based on selected floor.  
 - Please refer to the allotment letter for exact unit sizes.  
 - Furniture, fixtures or fittings shown in the floor plan are not standard and will not be provided in the apartment.

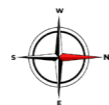
# FLOOR PLAN 3 BHK



Unit 7 | Block A

Living Room	1
Kitchen	1
Bedrooms	3
Toilet	3
Balcony	2
Utility	1

Total Area : 1,581sqft



Scan here for Walkthrough



Key Plan

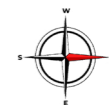
# FLOOR PLAN 3 BHK



Unit 7 | Block B

Living Room	1
Kitchen	1
Bedrooms	2
Toilet	2
Balcony	2
Utility	1

Total Area : 1,515sqft



Scan here for Walkthrough



Key Plan

- Furniture, fixtures or fittings shown in the floor plan are not standard and will not be provided in the apartment.

- Please refer to the apartment letter for exact unit sizes.

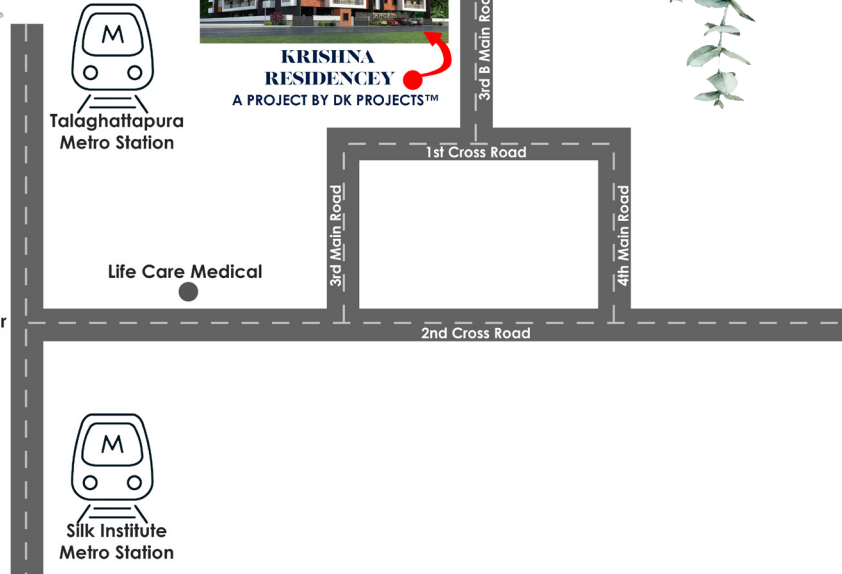
- Common areas/corridors and window placement may vary based on selected floor.

- Areas mentioned herein are approximate and shall vary based on selected apartment.

- All plans are in accordance with the latest approved sanctioned plan and are subject to changes mandated by government authorities and/or applicable laws from time to time.



**KRISHNA  
RESIDENCY**  
A PROJECT BY DK PROJECTS™



### PROJECT ADDRESS

3rd B Main Road, Judicial Layout, 2nd Phase,  
Bangalore - 560062.

### OFFICE ADDRESS

#176, 13th Cross, JP Nagar 1st Phase,  
Bangalore - 560078

<https://www.dkprojects.co.in/>

Scan here  
for Location



#### Disclaimer

- The imagery used in the brochure is indicative of style only.
- The photographs of the interiors, surrounding views and location may have been digitally enhanced or altered and do not represent actual or surrounding views.
- No photos have been shot at site. Floor plans are in accordance with the last approved sanctioned plan and may be subject to change mandated by governmental authorities and/or applicable law.
- Standard fittings and finishes are subject to availability and vendor discretion. The images shown in the brochure are not standard and will not be provided as a part of an apartment. The information contained herein is believed to be true but not guaranteed.
- The colours of the buildings are indicative. This is a reference document intended only to provide generic information and does not constitute an offer or contract.