



Pratik Residency

2BHK | 1BHK Flats



Plot No. 88, Sector - 9, Ulwe, Navi Mumbai.

Where you'll experience a royal life

Pratik Residency, an experience of royal life with elegantly designed homes to make living with luxury. The grandeur and majesty of architectural brilliance can be seen and experienced here. It's not like other homes, where you only get the luxury not the opulence of life. Here you'll experience luxury and peace of mind in an equal measure. Every corner is fragranced with the brilliance of architecture planning and design technique, so that it rewards you with peace and makes living an distinct pleasure.

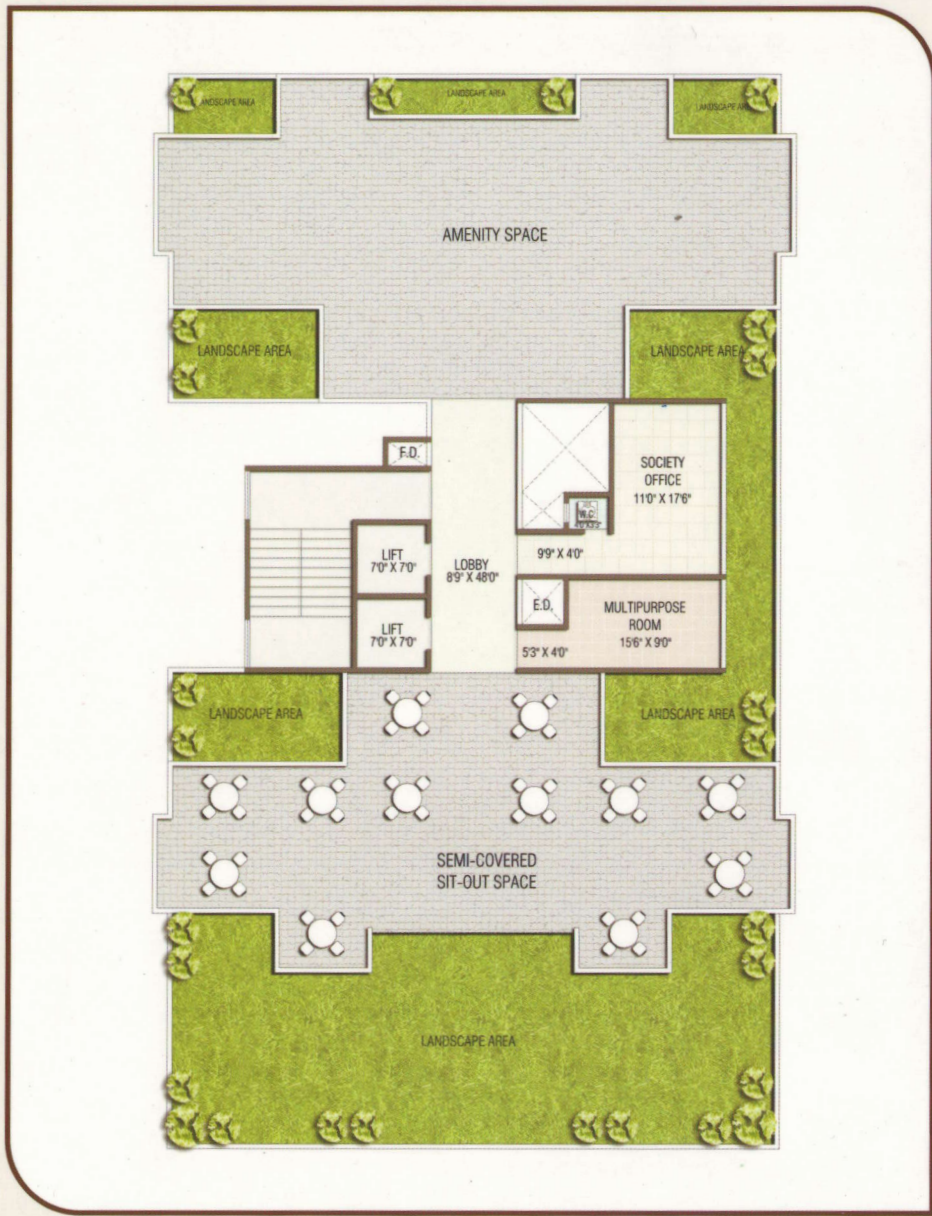
External Features

- G+13 Storey Residential Building
- Earthquake resistant R. C. C. Design
- Spacious & designer floor lobbies
- High Speed elevators of reputed make
- Generator back up for lobby lift, stairs & pumps

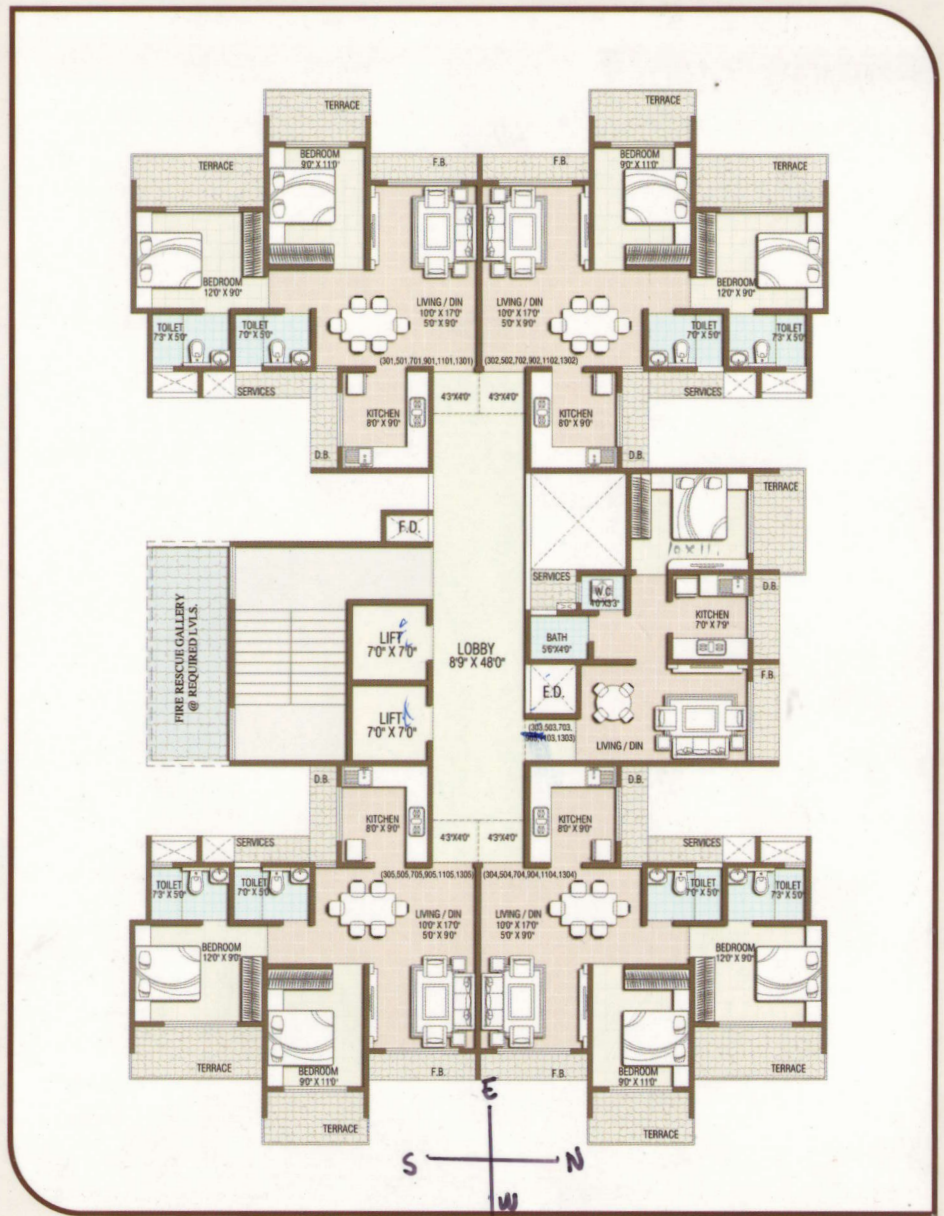
Internal Features

- Vitrified flooring in entire flat
- Wooden doors with laminate on both sides in every room with elegant handles and locks
- Granite Kitchen platform with stainless steel sink and ceramic tiles dado up to 2 ft
- All Internal wall Gypsum finished with washable interior paint
- Acrylic paint on external walls
- Anodized aluminum sliding window with clear glass & granite window sill
- Cable TV / Telephone point in Living room and M. Bedroom
- Branded concealed copper wiring with MCB/ELCB
- Modular electrical switches
- Well designed bathrooms with deluxe bathroom fittings
- Tiles dado upto beam bottom for WC & Bath
- Concealed plumbing & C. P fittings of reputed make
- Branded sanitary ware, Exhaust fan and Geyser point in Bathroom

PRATIK RESIDENCY.



First Floor Plan



Typical Floor Plan