

# AKASH empire

SHOPS | 2BHK | 3BHK  
4BHK DUPLEX



Project By



Site:-

Akash Empire, Plot No. 1C + 1D,  
S. No. 882/1A/1, Rajiv Nagar, Nashik

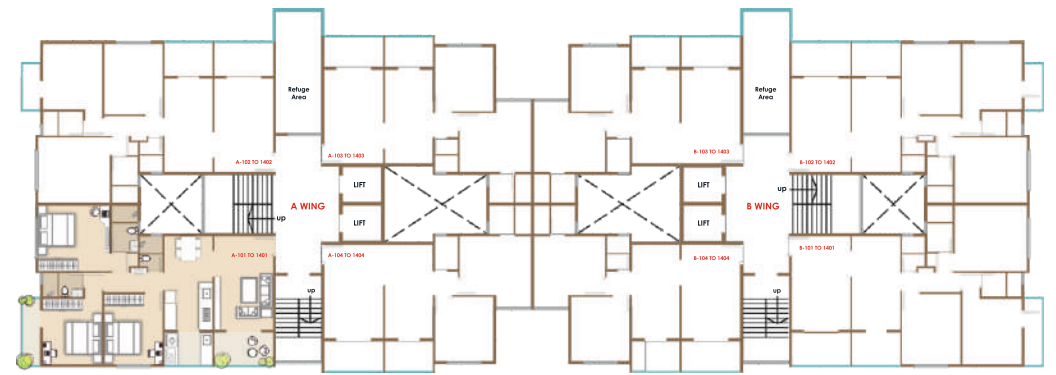




# Typical 1st To 14th Floor Plan







Key Plan

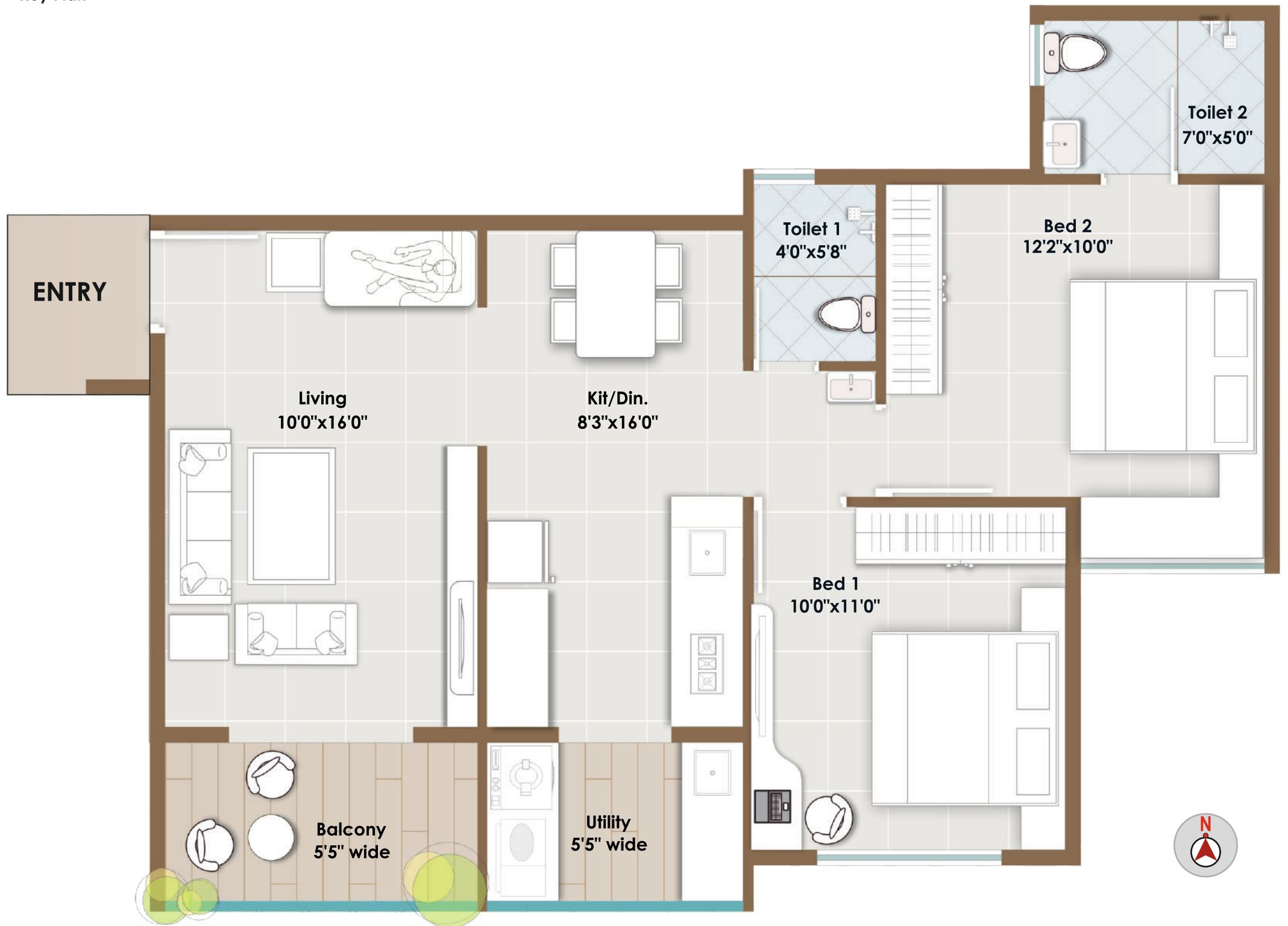


A ,B & C WING  
3BHK  
Cut View





Key Plan



A ,B & C WING  
2BHK  
Cut View





# WING - C

## Typical 1st To 13th Floor Plan





Entrance Lobby



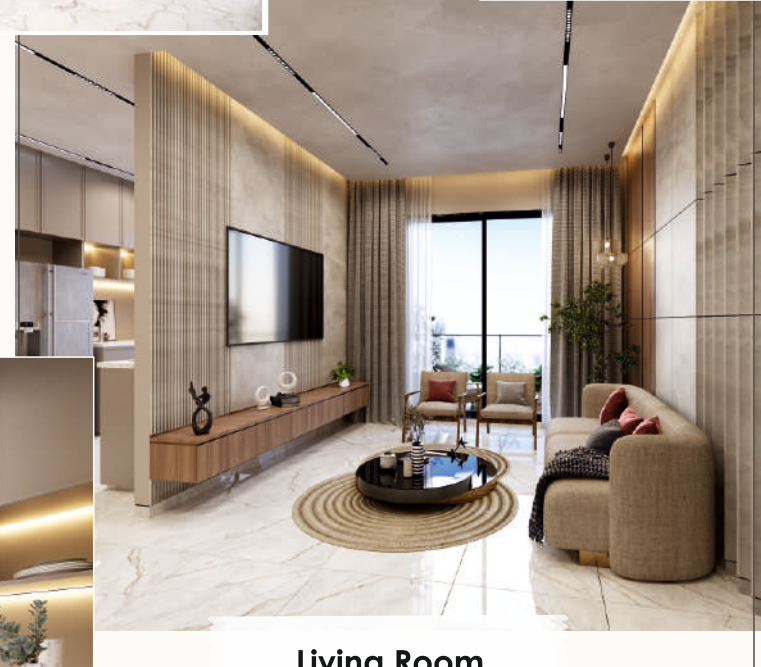
Bed Room



Kitchen & Dining



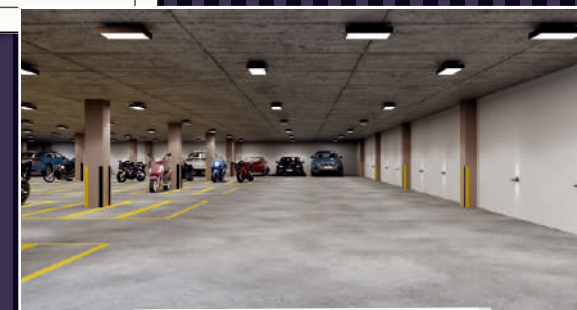
Living Room



Gym



BASEMENT PARKING



## Akash Empire

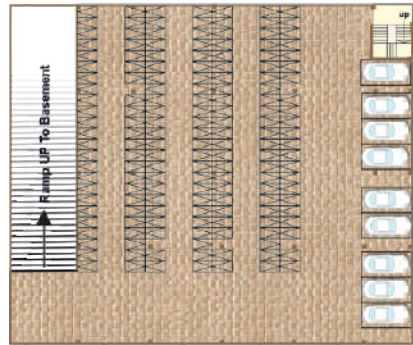
Premium 2 & 3 bhk ,4 bhk duplex residences promising to create an environment that exceeds all expectations, from location and open space, to connectivity, conveniences, and modern day architecture with ample amenities.

Come and experience all that has to offer at **Akash Empire**, where every day is an opportunity to get more out of life !

# Ground Floor Plan



## BASEMENT FLOOR PLAN



12.00 m. wide road

## Amenities



**Open Air Gym / Green Gym**



**Kids Play Area**



**Temple**



**Multiple Sit-Outs**



**Multi Purpose Pavilion**



**Indoor Gymnasium**



**Yoga Deck**



**Artificial Lawns**



**Designer Lobby**



**Solar Grid**



**Gated Community**



**Dedicated 2 Wheeler Parking Space**



**Walking Track**

## Specifications

### **STRUCTURE -**

Earthquake Resistant R. C. C. Framed Structure.

### **BRICKWORK -**

External Walls 6" Thick & Internal Walls 4" Thick.

### **PLASTER -**

External – Double coat Plaster,  
Internal – Single Coat Plaster & Gypsum Finish.

### **FLOORING -**

Vitrified Tiles For All Rooms.  
Kitchen Platform With Granite Top And S.S.Sink.  
Toilet- Dado Up To 8'.

### **DOORS -**

Both Side Laminated & Finished Doors.

### **WINDOWS -**

3 Track UPVC Windows With Mosquito Net  
& Safety Grills.

### **PLUMBING -**

Concealed Plumbing With Jaquar/ Plumber or  
Any Other Equivalent Brand Fixtures.

### **ELECTRICAL -**

Concealed Electrification With Cable Point.  
ISI Certified Modular Switches.  
Common DTH facility.

### **COLORING -**

External – Asian Paints - Apex / Ultima.  
Internal - Asian Paints - Premium Emulsion Paint.

### **UTILITY -**

Separate provision for washing machine &  
dish washer.  
Service platform with sink in utility.

### **LIFT-**

Lift With Back-up.

### **Security Systems-**

C.C.T.V. Cameras In Parking & Corridors.  
Security Cabin.  
Video Door Phone.

Note - This Brochure Is For Information Only And Not A Legal Document .  
The Developer Reserves Rights To Change, Cancel, Amend And Plan,  
Layout, Amenities / Specification Without Prior Notice.

Project By



we build trust

**Deepak Dhanokar - 94222 50296**

**Bhushan Akarte - 98222 23657**

Office - 103, Amar Arcade, Kulkarni Colony ,  
Sharanpur Road , Nashik

web - [www.deepconstruction.co.in](http://www.deepconstruction.co.in)

email - [info@deepconstruction.co.in](mailto:info@deepconstruction.co.in)

### Credits

**ARCHITECT**

Ar. Umesh Bagul

**STRUCTURAL CONSULTANT**

Er. Suyog Bhore

**LEGAL ADVISOR**

Adv. Vidyulata Tated

**MEP CONSULTANT**

Mukta MEP Consultant

MEMBER  
**CREDAI**  
NASHIK METRO



REGN. NO. P51600078187