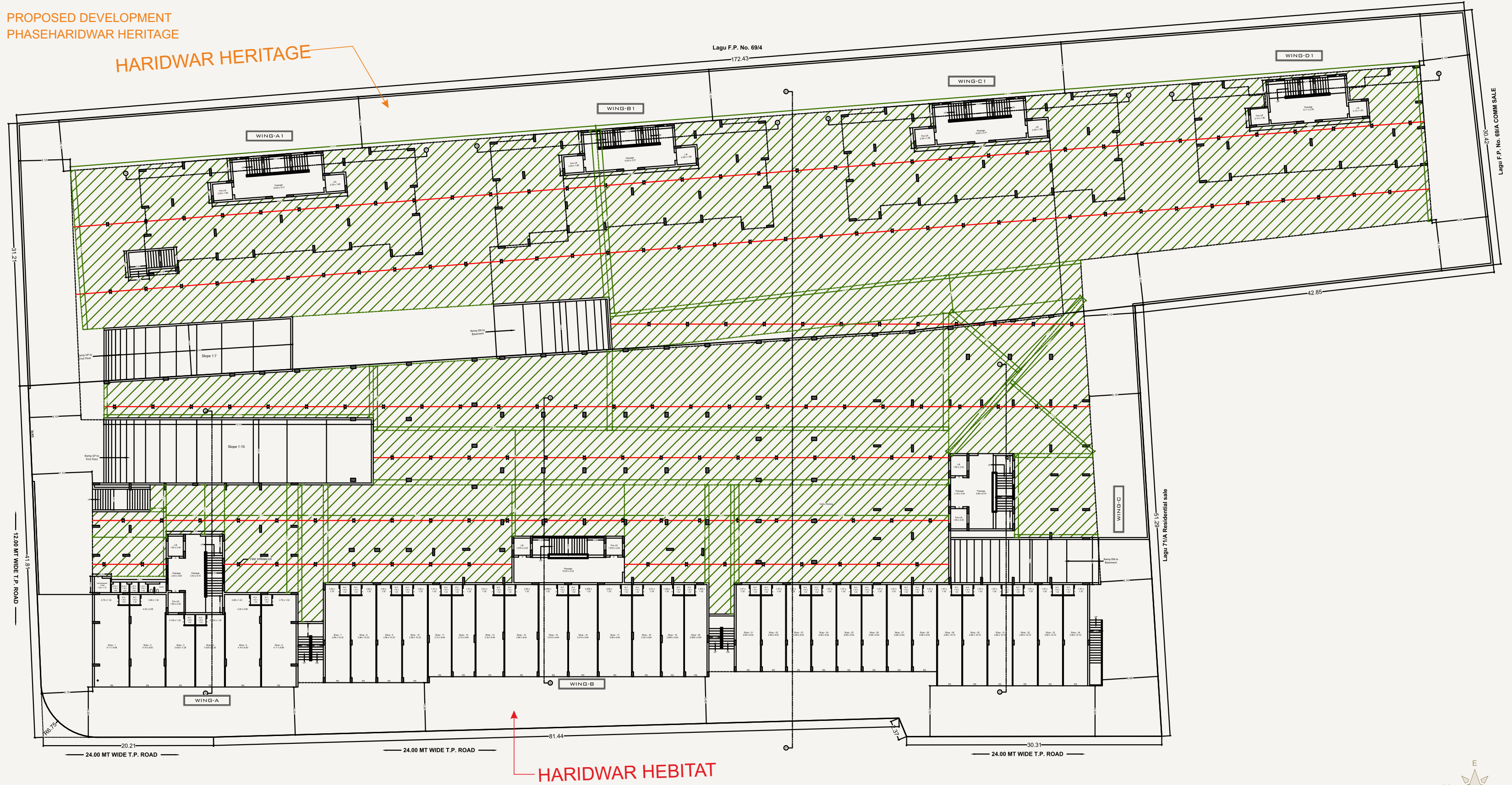


एरिद्वार  
Heritage

3&4 BHK  
LAVISH FLATS



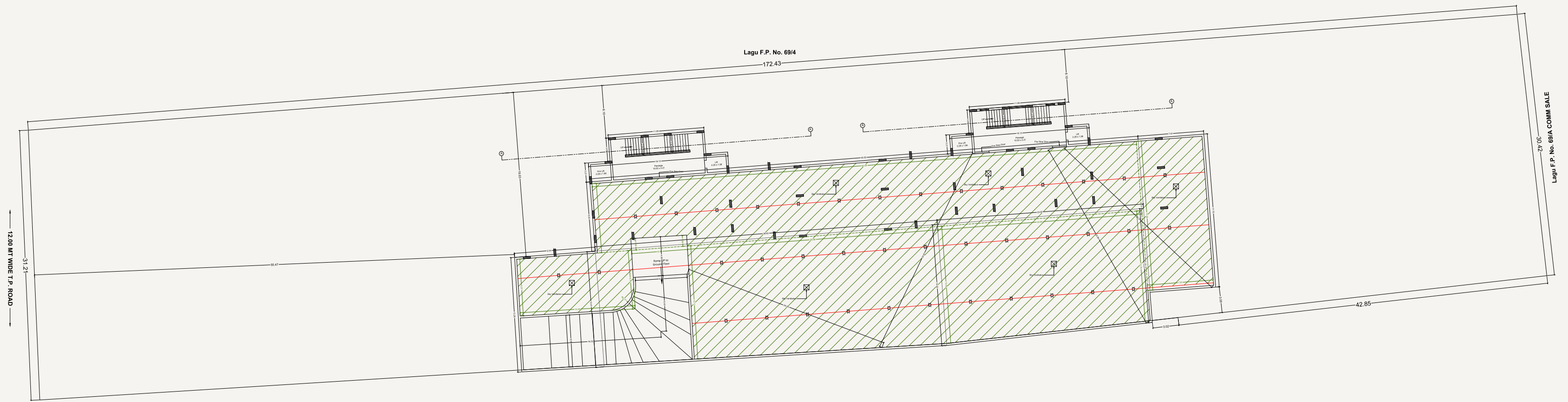
PROPOSED DEVELOPMENT  
PHASE HARIDWAR HERITAGE



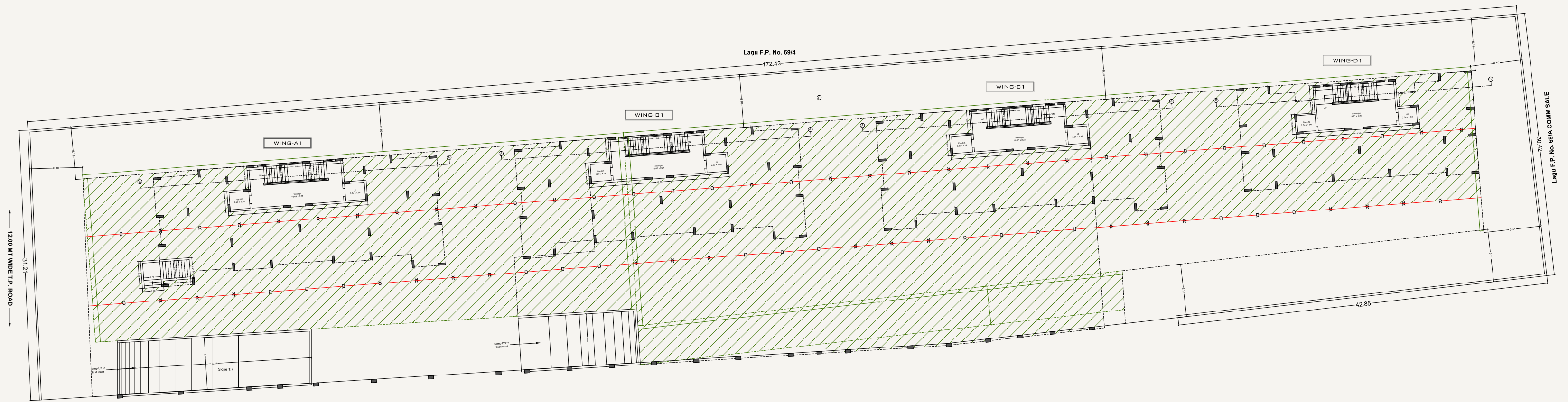
HARIDWAR HEBITAT - RERA NO.  
PR/GJ/RAJKOT/RAJKOT/Others/MAA09280/A1M/041122

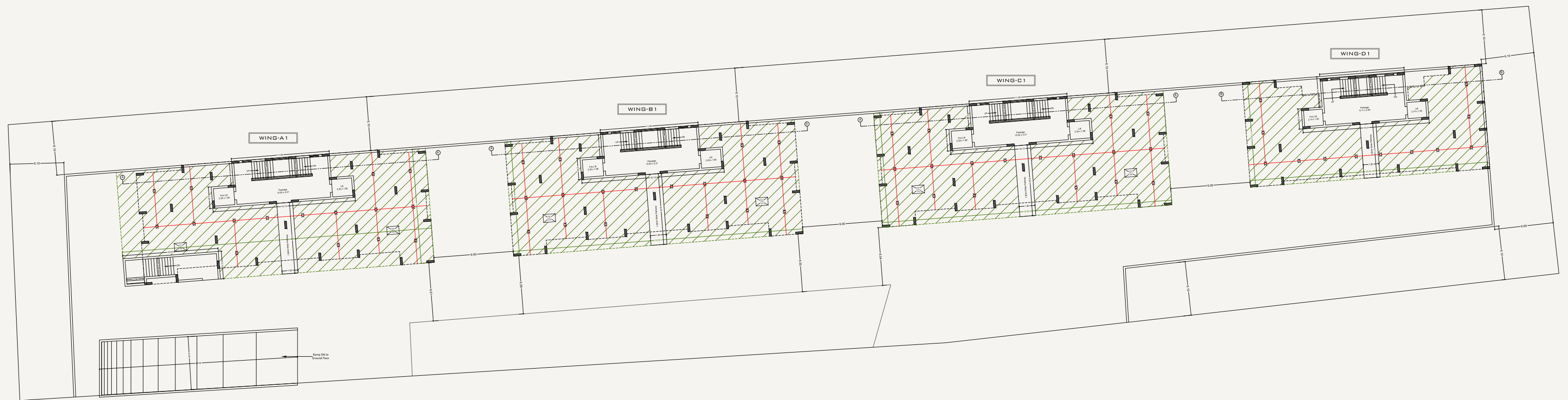


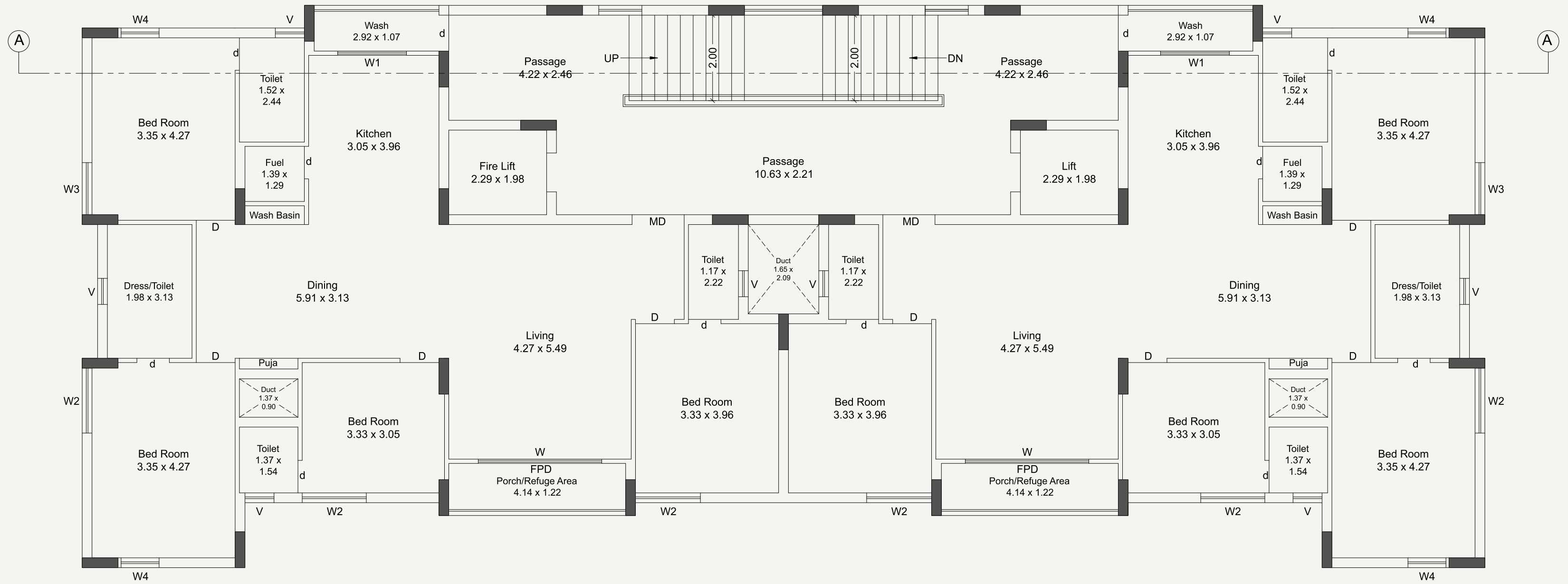
BASEMENT PLAN

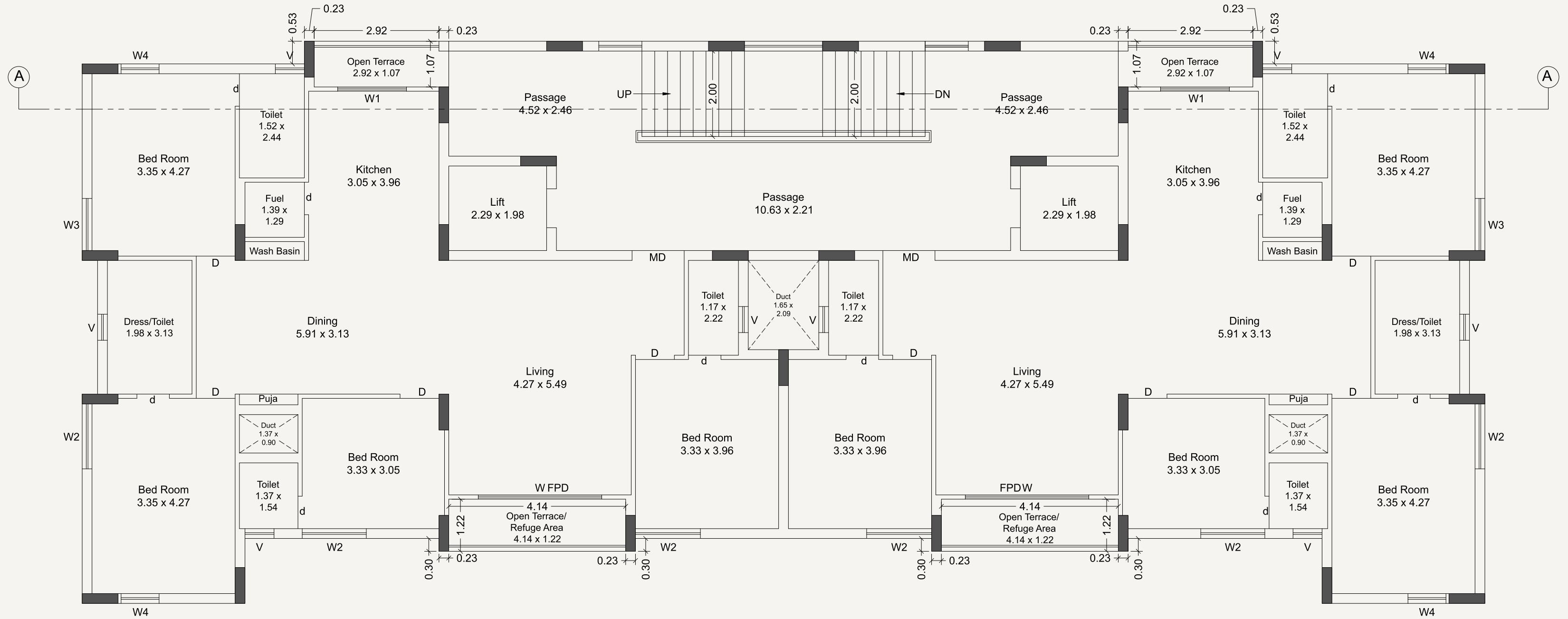


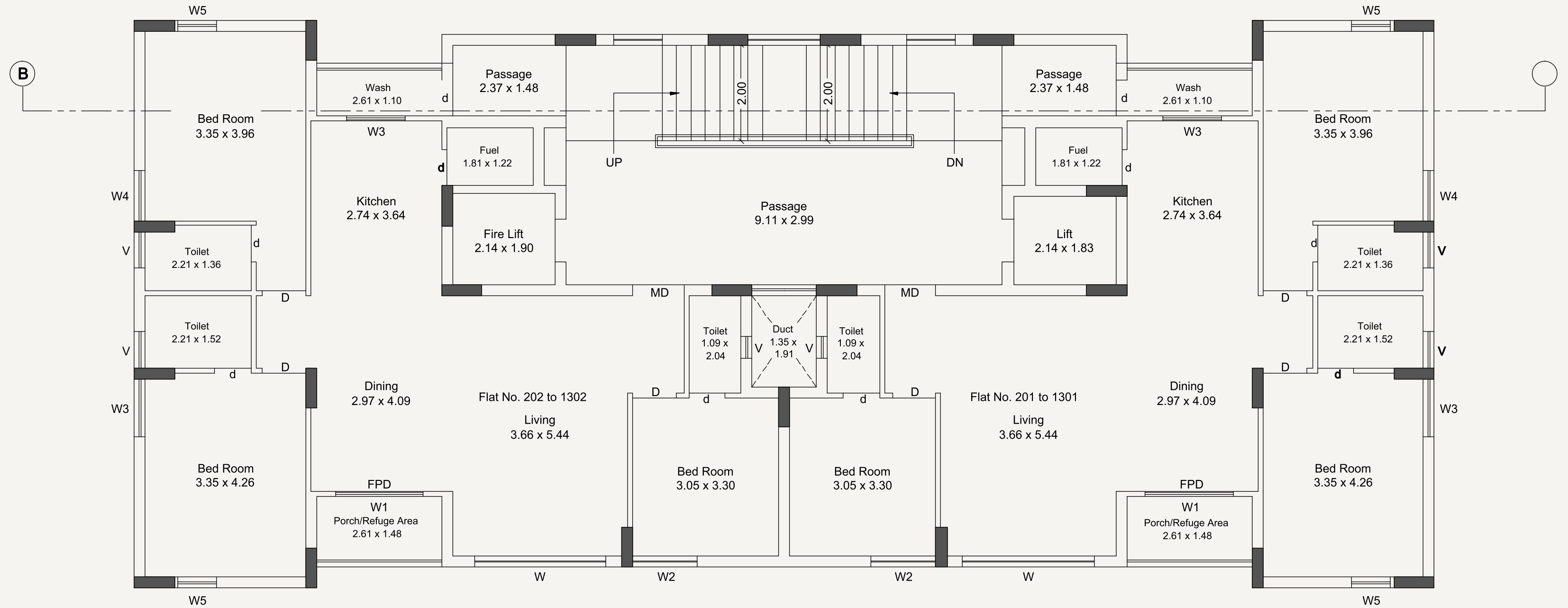
GROUND FLOOR PLAN

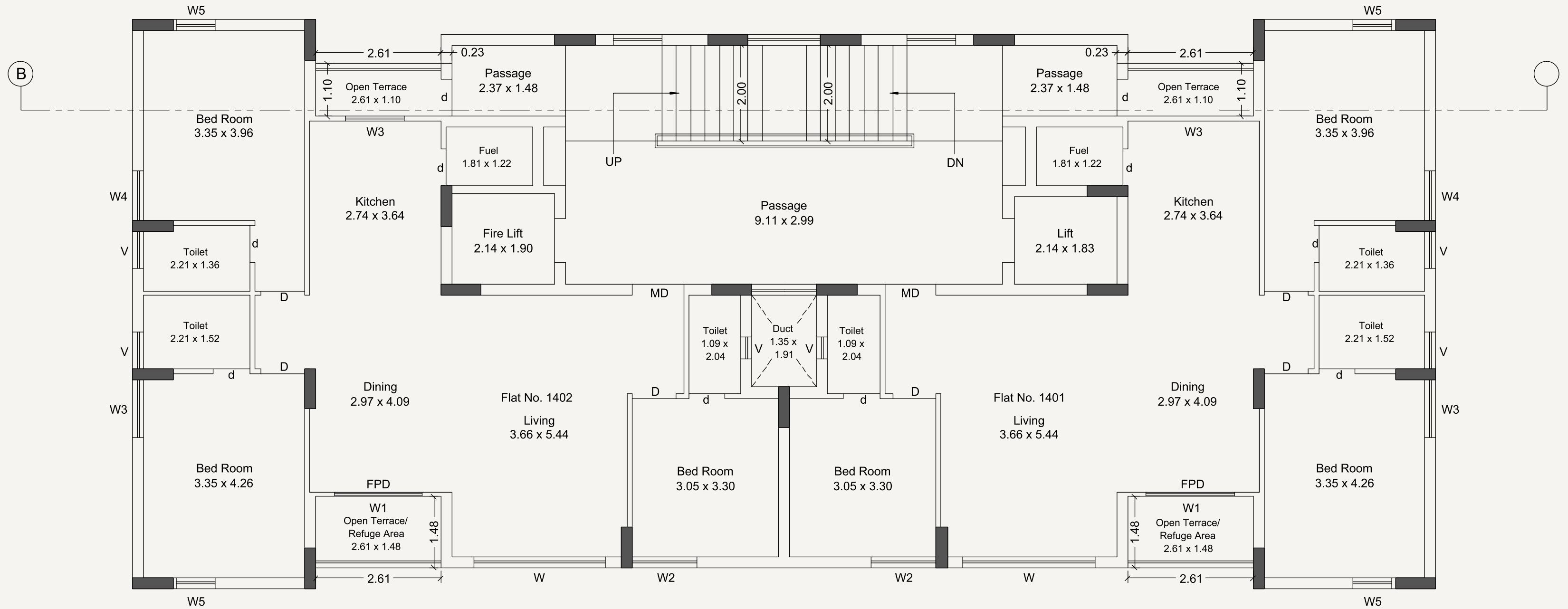












## SPECIFICATIONS

### FLOORING

- VITRIFIED TILES IN ALL FLOOR.
- ANTI-SKID FLOORING IN WASH YARD.
- GRANITE PLATFORM WITH S.S. OR QUARTZ SINK AND DESIGNER TILES.

### WALLS

- WHITE WALL PUTTY FINISH IN INTERNAL WALLS.
- SAND FACED PLASTER WITH ACRYLIC PAINT FOR EXTERNAL WALLS.

### WINDOWS

- ALUMINIUM POWDER COATED WINDOW WITH PROVISION FOR MOSQUITO NET & GRANITE SILLS.

### KITCHEN

- PROVISION FOR CHIMNEY AND RO FILTER IN KITCHEN.

### BATHROOMS

- SUPREME BRANDED QUALITY SANITARY WARE & BATH FITTINGS.
- PROVISION FOR GAS GEYSER IN WASH YARD.

### ELECTRIFICATION

- FIRE RETARDANT COPPER WIRING WITH MODULAR SWITCHES & SAFETY GEAR.

### DOORS

- DECORATIVE MAIN DOOR & NO INTERNAL DOORS PROVIDED.

### INTERCOM

- INTERCOM FACILITY FOR EACH FLATS.

## KEY PLAN



Architect  
BHAVESH PATEL

Structure Engineer  
MANISHBHAI DOSHI

