



## Pil Developers Pvt. Ltd.

304/305, Shubham Center, B-2,  
Cardinal Gracious Road, Chakala,  
Andheri (East), Mumbai 400 099.



Pil Developers Pvt. Ltd.



+91 22 42150800 / 42150801 / 42150802



[pil.developers@hotmail.com](mailto:pil.developers@hotmail.com)



Website: [www.pildevelopers.com](http://www.pildevelopers.com)



**Site Address :** Yashwant Smart City, Madhuban Road,  
Opp. Evershine City, Gokhivare, Vasai (East) 401 208.

### Architect

Bombay Architectural Consultant  
Tel.: 022 2819 7722

### R.C.C. Consultant

JSK Consultant  
Mukesh Chaurasia  
Tel.: 022 3297 4742

### Legal Advisor

S. P. Singh  
Mob.: 98217 10565



# Pil Towers

# The Project of Pil Towers



## Little about Yashwant Smart City

Yashwant Smart City is a luxurious living space where all civil amenities are planned and connected through state of the art infrastructure.

Pil Tower is a project committed to provide luxurious living spaces at affordable prices, located in a well developed and integrated surrounding called Yashwant Smart City.

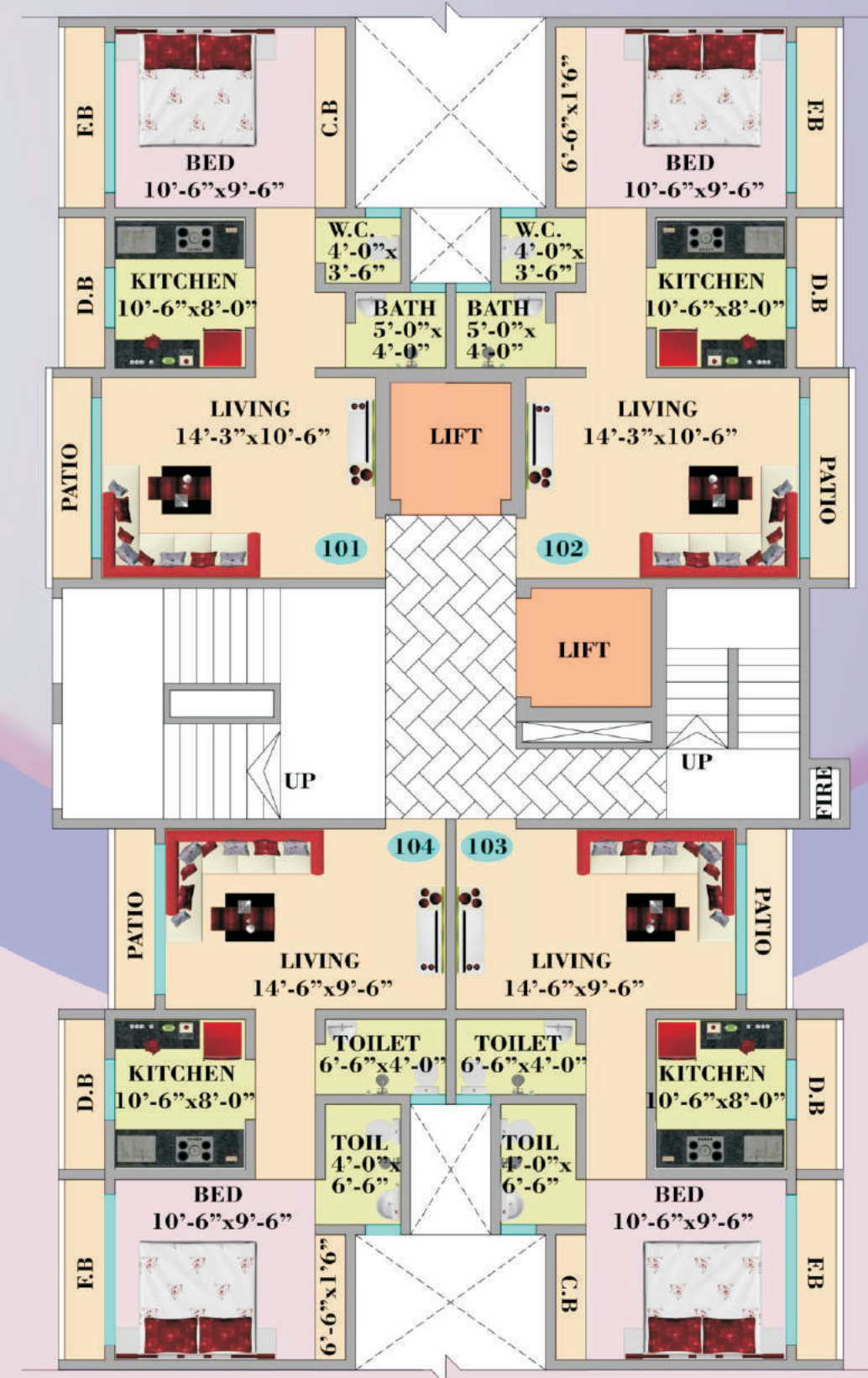
Our well thought out flats are at affordable prices designed and engineered to perfection, An architectural statement that showcases the most opulent lifestyle in Vasai with a modern Tower of Stilt + 14 with all amenities provided.

Its 10 minutes away from Vasai Station and about 15 minutes away from the Western Express Highway.

## Pil Towers

F - WING

SECTOR - 1, BLDG. NO. 8



TYPICAL FLOOR PLAN

### 3D View



### Amenities

#### Living / Bedroom

- Elegant vitrified tiles flooring with skirting in all rooms.
- Designer main door with good quality fittings.
- TV points in living and master bedroom.
- Cable point in living.



### Pil Tower - Location Map



Its 10 minutes away from Vasai Station and about 15 minutes away from the Western Express Highway.



#### Modular Kitchen

- Fine finish granite in kitchen platform with stainless steel sink and wall tiles up to beam level.
- Exhaust fan in kitchen.



#### Electrical

- Concealed copper wiring sufficient light points with modular switches.
- Earth leakage circuit breaker.
- MCB for short circuit protection.
- Inverter wiring.

# Amenities



## Doors and Windows

- Anodized aluminum sliding windows with tinted glass and marble sill.
- Flush door for bedroom.
- Waterproof doors for W.C. and Bathroom with marble flooring.

## Flooring

- Elegant high quality vitrified tiles along with skirting in living room and bedroom.

## Painting

- OBD paints on internal walls, Acrylic paints on external walls.

## W.C. & Bath

- Anti-skid flooring in Bathroom and W.C. full height matt finish tiles in bathroom and W.C.
- Open wall mixer and hand shower of good quality
- Marble / Granite door frame for bathroom will be done.



## Plumbing

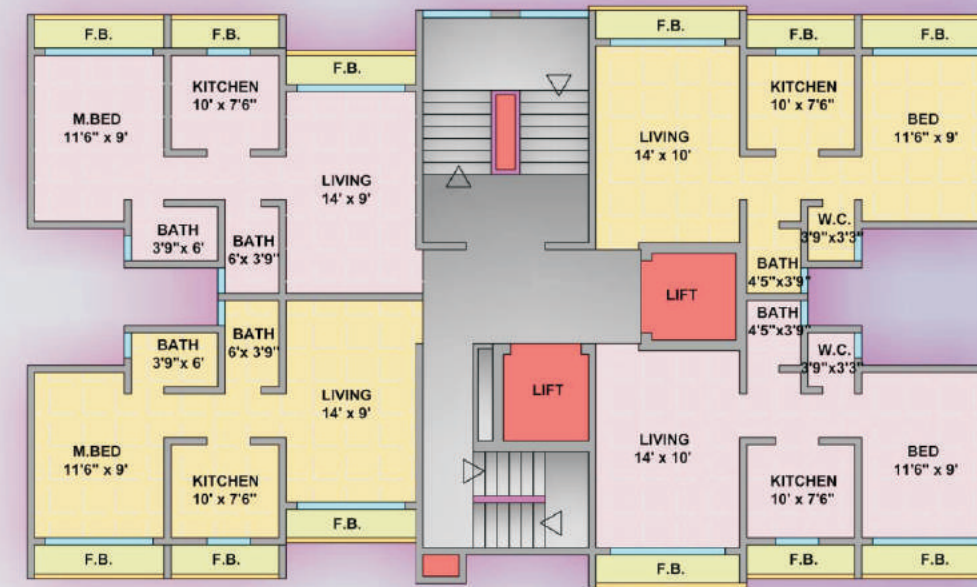
- Concealed plumbing with quality sanitary ware and attractive C.P. fittings.

## Lift

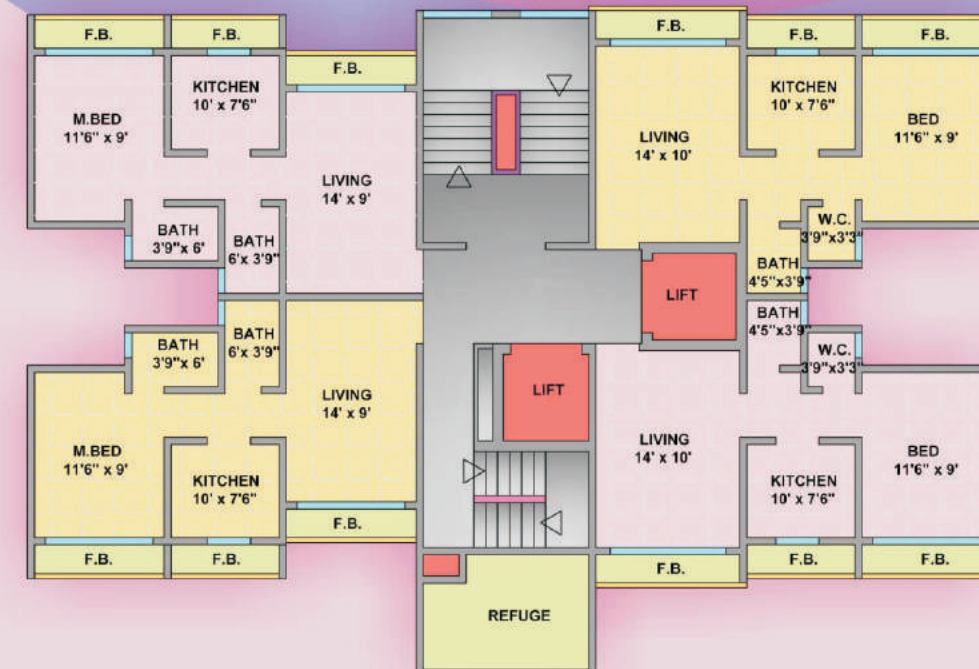
- Hi-Speed reputed make elevator.

## Others

- Elegant entrance lobby
- Proper lighting arrangement in ground
- Staircase and terrace
- Adequate capacity of under ground and overhead tank
- Elegant external elevation and colour scheme.
- Intercom facility
- Fire fighting System
- Earthquake resistant
- R.C.C. frame structure
- Complex Landscape garden
- Car parking



1 to 7 + 9 + 11 + 13 + 14  
Floor Plan



8 + 10 + 12  
Floor Plan