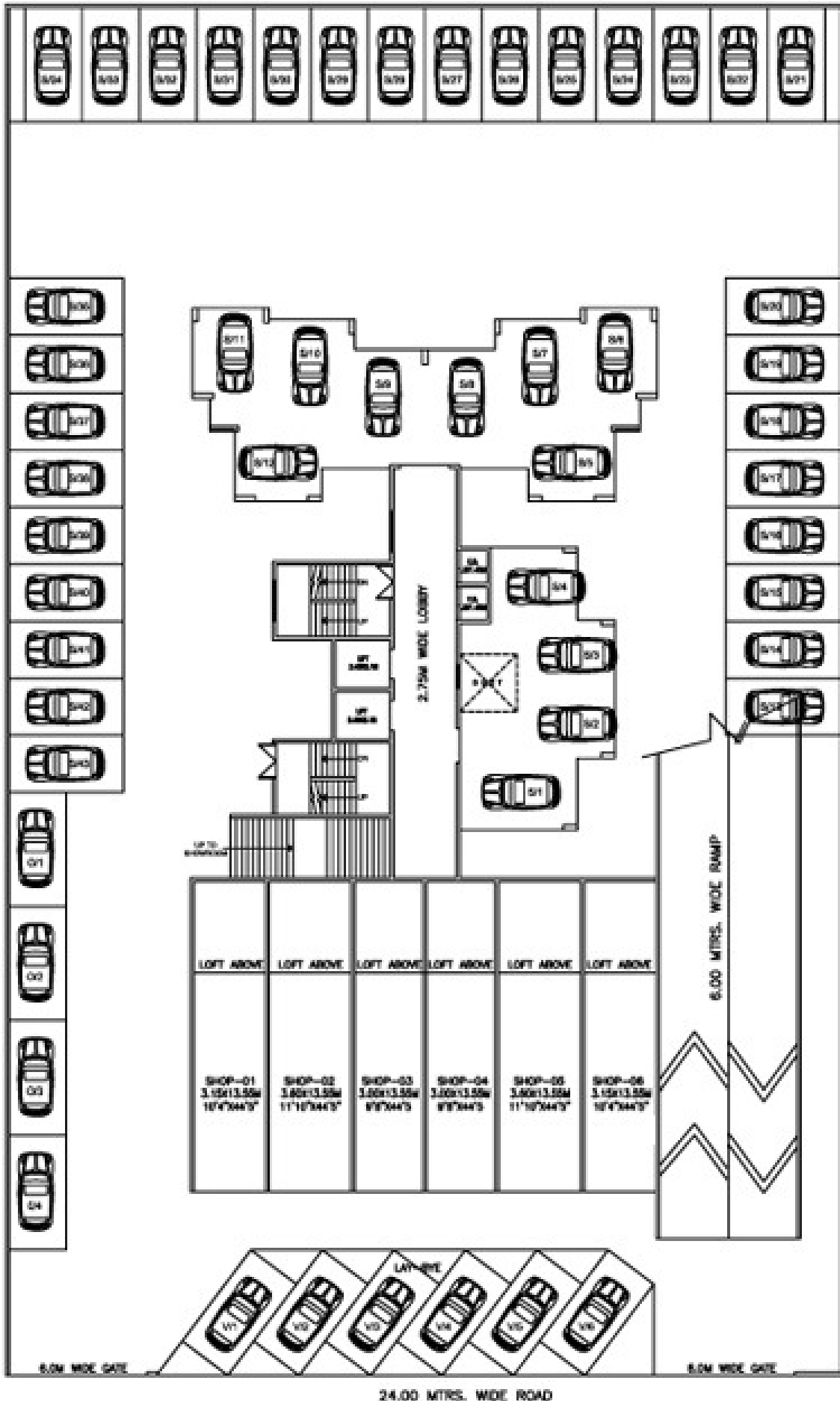




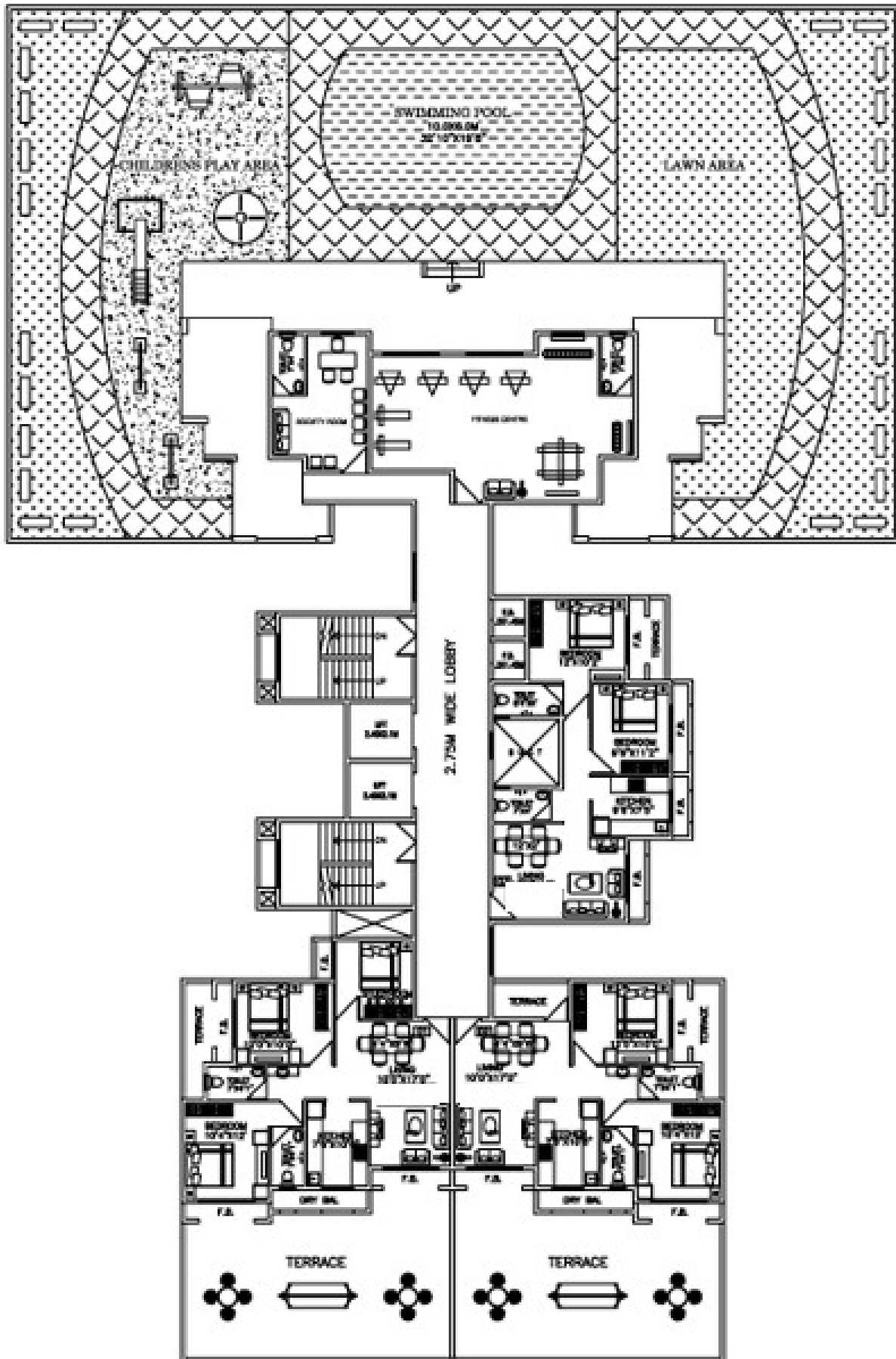
Overview

- On **24 Mtrs.** Wide Road
- Stilt + **12 Storey** Tower
- Showrooms, **2BHK & 2 ½ BHK** Flats with Natural Light and Cross Ventilation
- Ample Car Parking Space in Stilt and Podium
- 'A' Class Construction with earthquake resistant R.C.C. structure
- Excellent Planning with no wastage in all rooms
- **CIDCO** Transfer Plot and Development as per **CIDCO** approved plan
- Water Purify Treatment
- 5 minutes from proposed **Nhava-Sheva Shivri Sea link**
- Walking distance to Proposed **Costal Road.**
- Walking distance to Proposed **Bamandongri Railway Station.**
- 5 minutes drive to Proposed **Navi Mumbai Airport**
- Loans easily available and approved by all leading financial institutions and **banks**



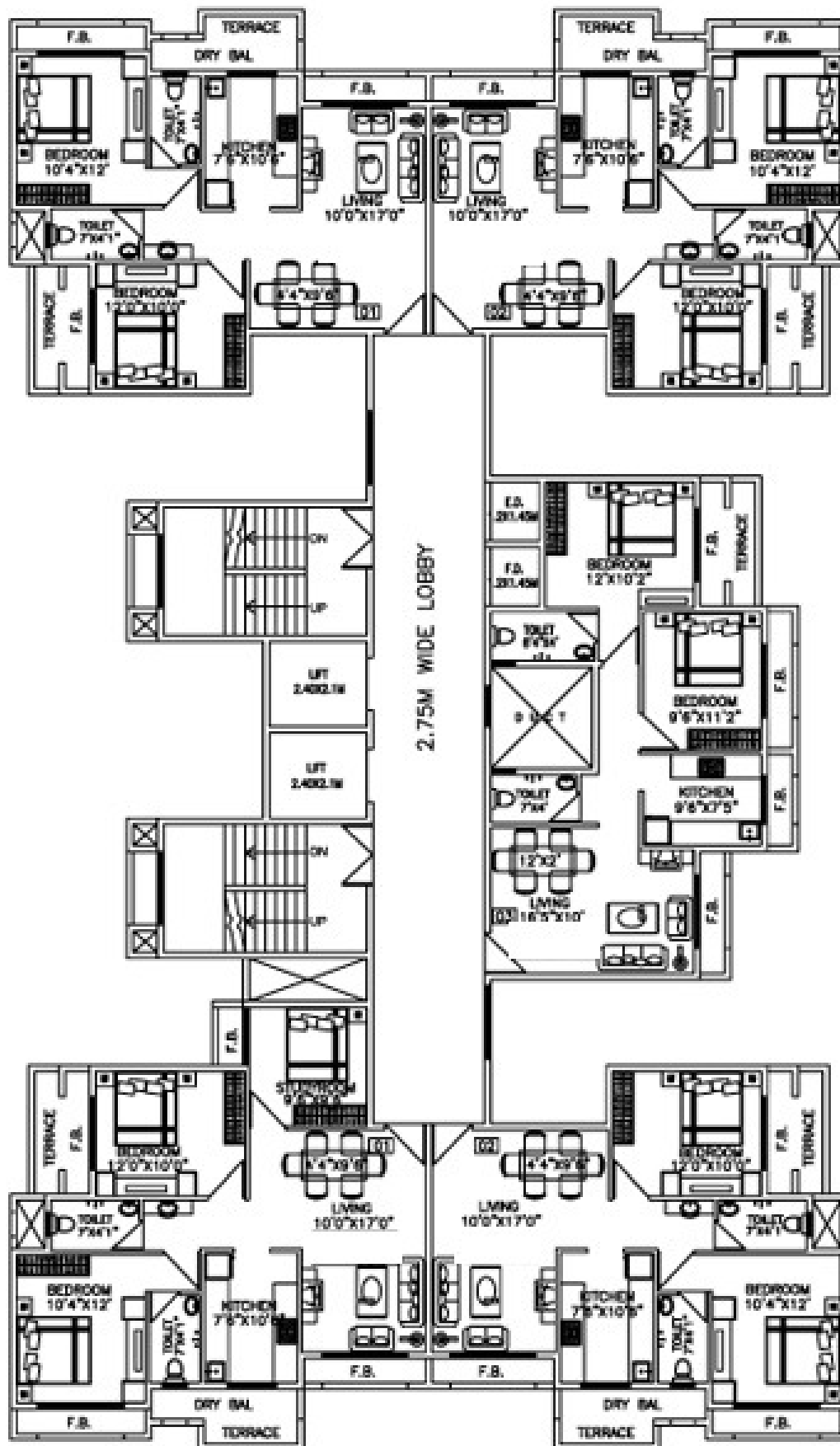


GROUND FLOOR PLAN



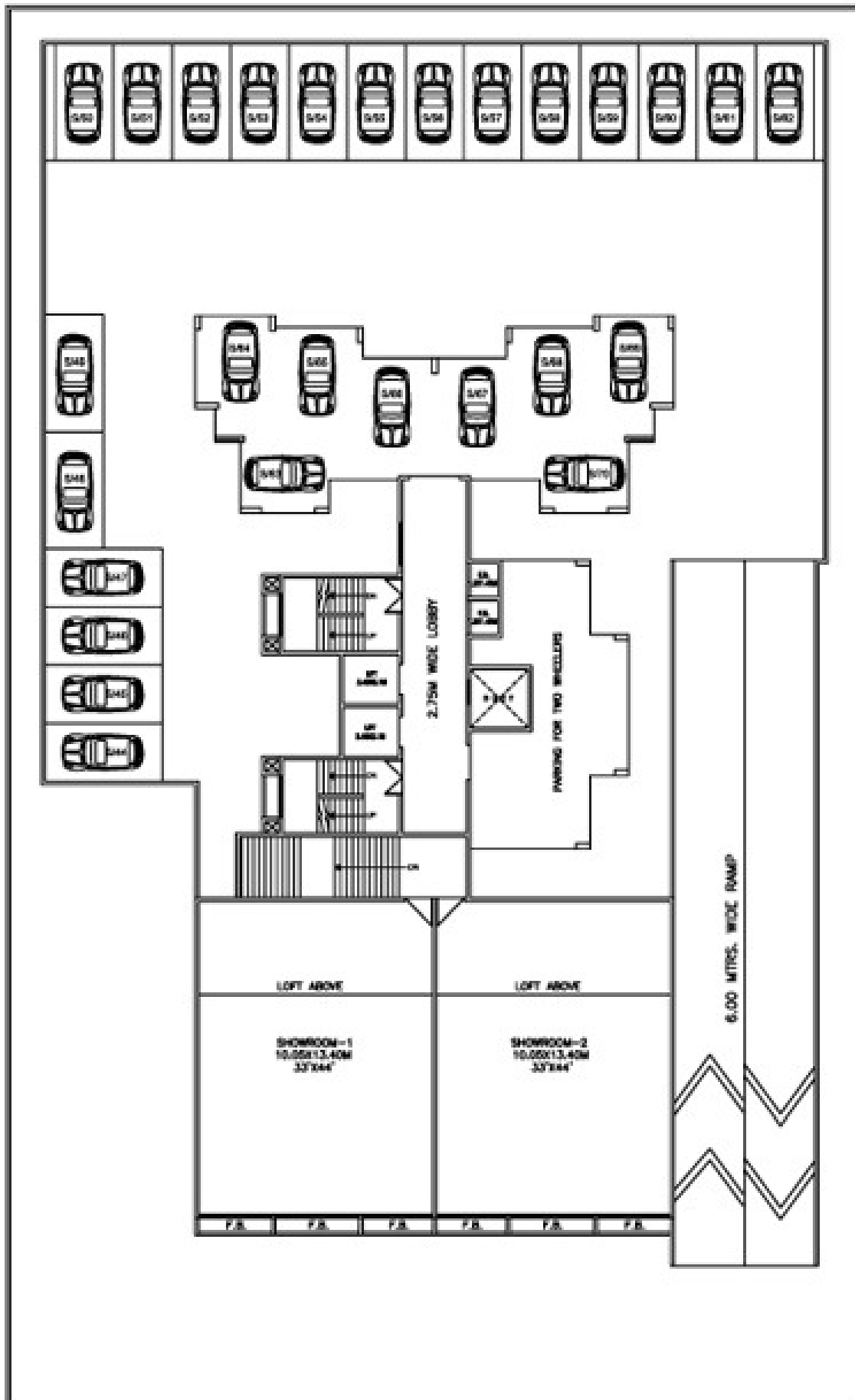
24.00 MTRS. WIDE ROAD

SECOND FLOOR PLAN



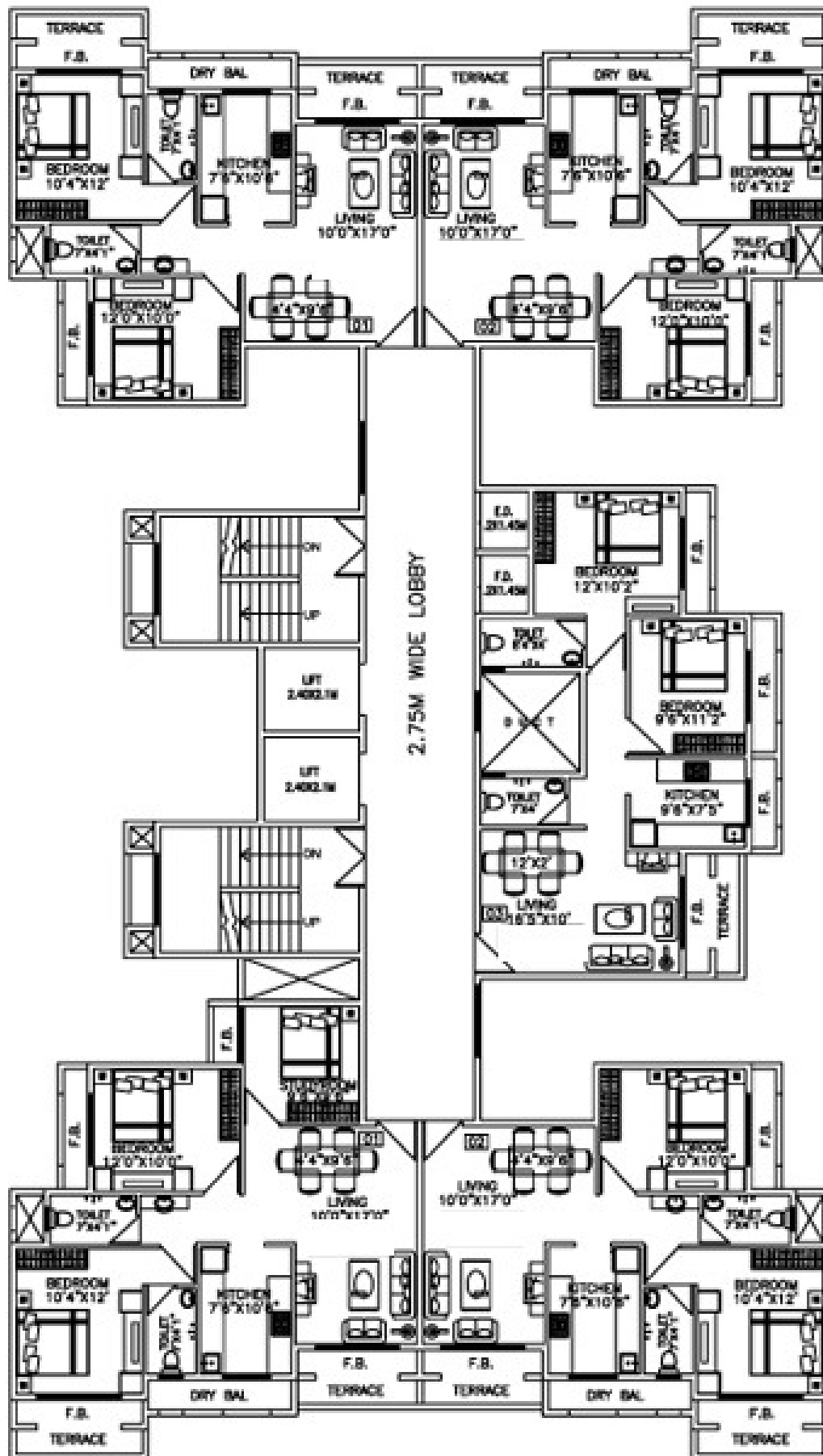
24.00 METRS. WIDE ROAD

TYPICAL FLOOR PLAN
(4TH, 6TH, 8TH, 10TH & 12TH)



24.00 METRS. WIDE ROAD

FIRST FLOOR PLAN
(PODIUM-1)



24.00 METRS. WIDE ROAD

TYPICAL FLOOR PLAN
(3RD, 5TH, 7TH, 9TH & 11TH)